

Parts List

- | | |
|---|---------------------------|
| 1 | LED light cover, 2" x 10" |
|---|---------------------------|

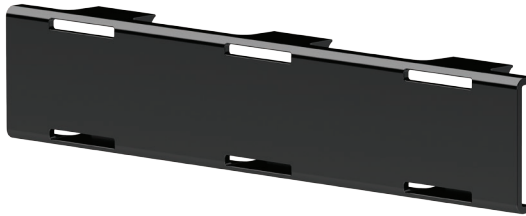
Level of Difficulty

Easy

Note

ARIES LED lights are intended for off-road use only. The end user is solely responsible for the knowledge of and adherence to all applicable federal, state and local laws and regulations pertaining to their use of our product.

Product Image



Step 1

Align the light cover with the front face of the LED light. Press the cover onto the LED light until the top and bottom locking tabs snap into the grooves on the LED housing. Confirm the installation by ensuring all the tabs are fully engaged.

To remove the light cover, gently lift the locking tabs to release them from the grooves in the LED housing. With the tabs disengaged, pull the cover away from the LED housing.

CAUTION: Using excessive force to lift the locking tabs may damage the cover. Only lift the tabs enough to clear the grooves in the LED housing for removal.

