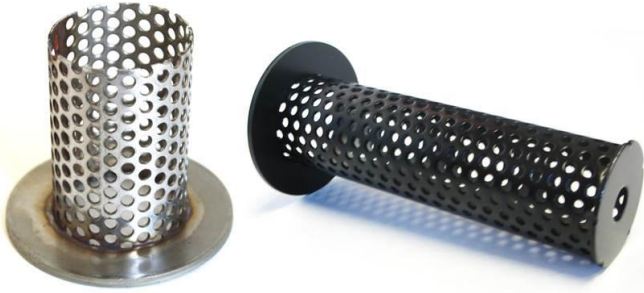




Installation Instruction

41-E0053 - Vortex Insert
41-E0054 - Vortex 2 Insert



Tool(s) Needed

- 1/4" Allen wrench
- or
- 10/32" Allen wrench

1. Remove the 3 or 4 Allen screws that hold the end cap on to the base plate.
2. Install the spark arrestor spacer ring into the recessed area of the base plate.
NOTE: The spacer ring was included with the spark arrestor that came with your exhaust.
3. Slide the Vortex insert into the muffler, over the spacer ring.
NOTE: If you are using an insert in conjunction with a spark arrestor, do not use the spacer ring. Install the insert first, then install the spark arrestor (dome facing out) second.
4. Re-install the end cap using Loctite on all screws. (Red Loctite is recommended.) Let it dry before using exhaust.

NOTE: Vortex 2 is not compatible with all models. See www.biggunexhaust.com for more information.

