



FORMERLY  
CAMOPLAST  
SOLIDEAL

# 2017 CAMSO SNOWMOBILE TRACKS



# TABLE OF CONTENT

Feel the difference _____	4
Do more with technology _____	6
Whatever your style is _____	8
<b>Trail</b>	<b>10</b>
<b>Cross-Country</b>	<b>18</b>
<b>Mountain</b>	<b>26</b>
Utility	34
Racing	38
More answers to your questions _____	42
Specifications _____	44

## GO FURTHER...

At Camso, we push ourselves to contribute to the advancement of the rider journey by actively engaging the powersports community to exceed expectations in track and track system development, performance and delivery.





## WHY A NEW TRACK?

For a number of reasons...Has your sled lost the edge it had when you first bought it? Are you looking to do more with your stock machine? Because a replacement track can push your journey to new levels of performance. Why shell out big bucks for a new sled or risk voiding your warranty with performance-enhancing engine modifications? Powersports tracks are an effective and affordable way to extend the life of your sled.

## FEEL THE DIFFERENCE

Camso track will go beyond limits.

- Better traction on any surface
- Better handling and stability
- Quicker acceleration
- Shorter stopping distances on hard surfaces
- Better flotation in soft, deep snow

## THE 4 KEYS TO TRACK SELECTION

### LENGTH

is the inside circumference of the track, and is calculated as the drive pitch multiplied by the number of track segments. It must be correct to the nearest inch for proper fit without additional modifications to the skid frame.\*

### WIDTH

is the measurement across the track and is governed by the width of the tunnel.

- A slightly narrower track is permissible, like a 15-inch track in place of a 16-inch track, but not necessarily the other way around

### DRIVE PITCH\*\*

is the drive cog center distance around the circumference of the cogs on the drive axle. It must match the existing track or the drive cogs must be changed.

- 2.52" primarily machines manufactured before 2007
- 2.86" especially on recent models manufactured after 2007
- 3" and new 3.5" drive pitch for lowest weight on select mountain sleds

### LUG HEIGHT\*\*\*

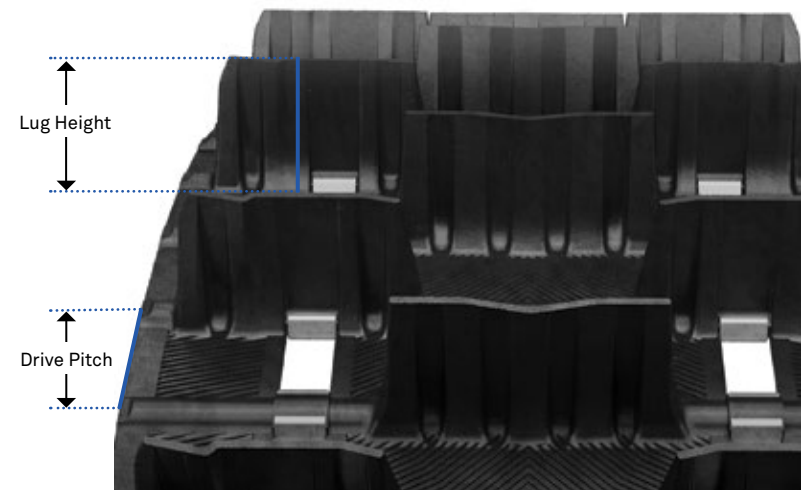
is the distance the lugs extend above the track surface.

- 1" - <1.5" – trail
- 1.5" - <2" – on/off trail
- 2" and greater – deep snow

\* Aftermarket parts are available for mods when needed

\*\* Some other drive pitches are also found on older models

\*\*\* Check for adequate clearance before going to a taller lug track



## DO MORE WITH TECHNOLOGY

All our tracks are manufactured internally through a unique process that cures the final product in full form and in one step.

Our technology ensures the product is balanced and reduces track vibration. We analyze different lug designs and evaluate what features would aid flotation and traction. Material selection and placement creates the lightest weight, most efficient track on the market.

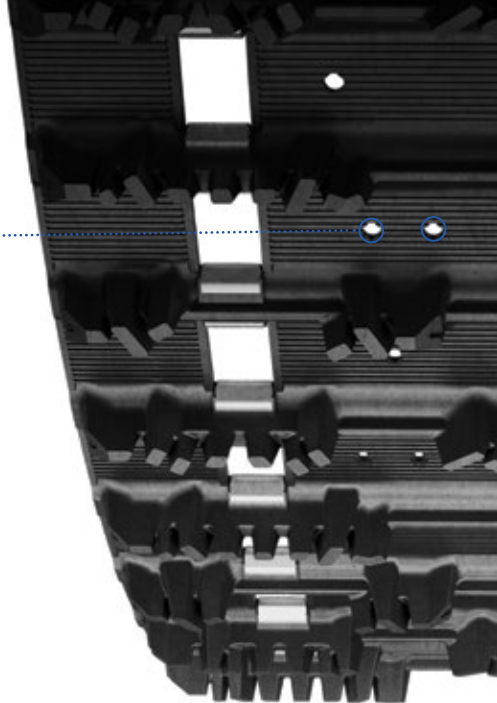
The result? The summit of durability and performance helping riders go further in any condition or environment.

### ● | ENHANCED STUD EASY TRACKS

Our pre-holed models are a great choice for trail sled applications.

- No drilling necessary, with quick, easy stud installation
- Track belting is enhanced and properly punched for studding
- Featured stud patterns developed by the industry's leading traction manufacturer
- One-year limited warranty\*

\* Studs and related hardware not covered by Camso warranty policy. Contact stud and related hardware manufacturer for warranty policy.



### ■ | SINGLE-PLY CONSTRUCTION

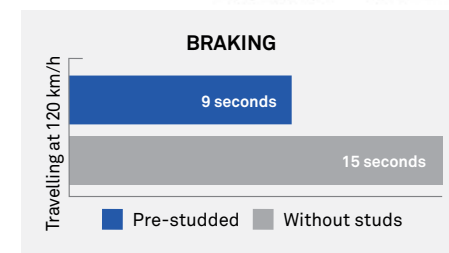
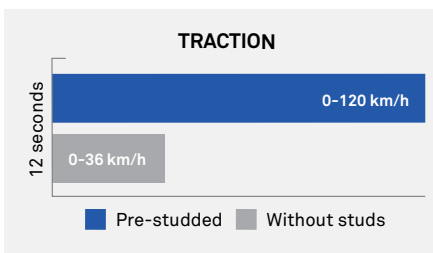
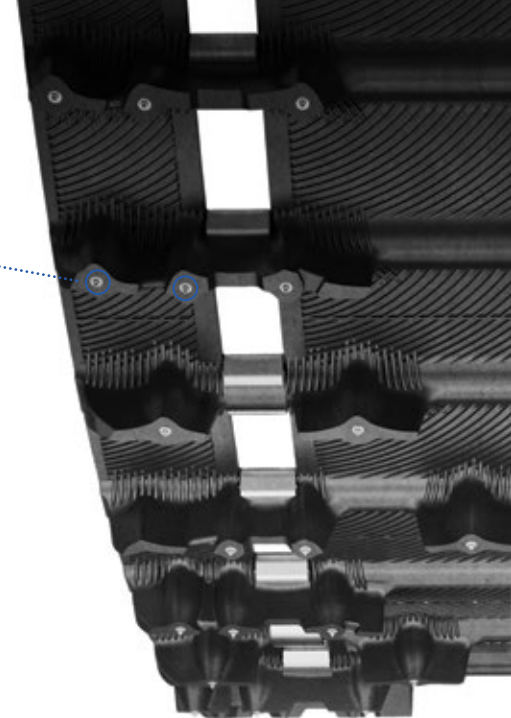
Advanced track carcass technology reduces weight and improves performance.

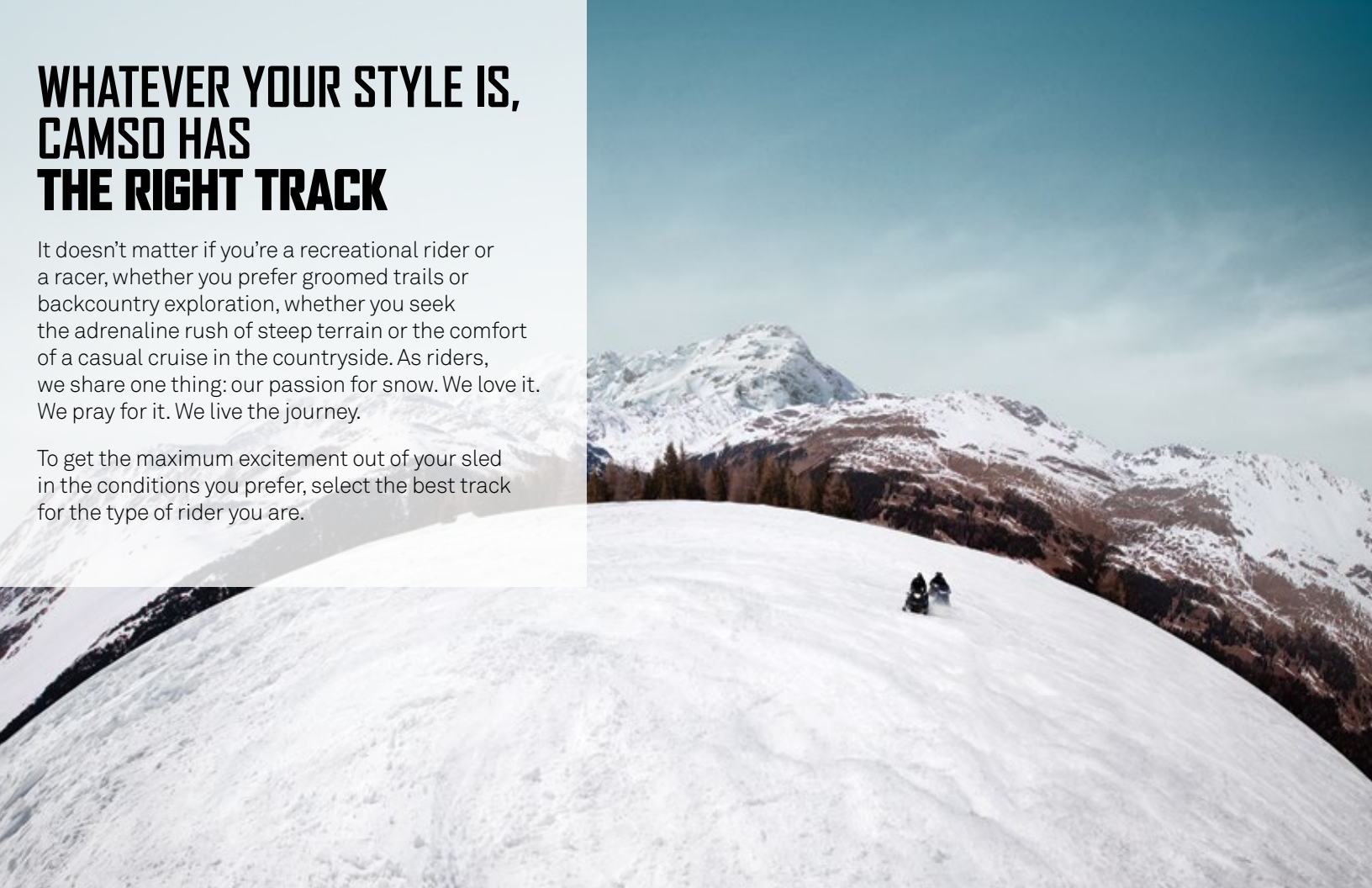
- Lower internal friction means you use less engine power
- Reduced rolling resistance for improved top speed and fuel economy
- Cooler running results in longer track life

### ▲ | EMBEDDED SHARP TIP LUG STUDS

Our factory pre-studded tracks provide enhanced traction and control over tracks without studs as well as convenience and savings compared to conventional studding.

- Better control on icy hills and corners
- Only adds 1lb of weight to the track
- Eliminates stud installation time and trouble
- No stud installation or maintenance costs





# WHATEVER YOUR STYLE IS, CAMSO HAS THE RIGHT TRACK

It doesn't matter if you're a recreational rider or a racer, whether you prefer groomed trails or backcountry exploration, whether you seek the adrenaline rush of steep terrain or the comfort of a casual cruise in the countryside. As riders, we share one thing: our passion for snow. We love it. We pray for it. We live the journey.

To get the maximum excitement out of your sled in the conditions you prefer, select the best track for the type of rider you are.

## TRAIL

You're someone who loves well-defined routes, a cruiser doing big mileage, an aggressive rider with a thrill of top-notch traction, or a power rider flooring it on the straightaways.

- Groomed snowmobile trails
- Ungroomed trails used enough to be compacted most or all of the time
- Bare or lightly covered ice with special traction challenges

## CROSS-COUNTRY

You prefer deeper, looser snow. Racking up the miles in the backcountry? Check. Half on-trail, half off? Check.

- Ditch lines
- Less-used and completely ungroomed trails
- Boondocking in remote areas with no trails

## MOUNTAIN

You relish any trip that involves high country open meadows, boondocking in the trees and lots of deep snow.

- Deep powder snow with a light track for maximum traction and flotation
- High-altitude terrain
- Steep slopes

## UTILITY

You're working in the snow. You have a job to do in demanding and unpredictable conditions.

- Transportation of personnel and tools
- Pulling equipment and material
- Unpredictable snow and terrain

## RACING

You are doing competition on a specific terrain and controlled course:

- Asphalt
- Ice and grass drag
- Ice oval
- Snocross
- Snow and hill drag



TRAILS

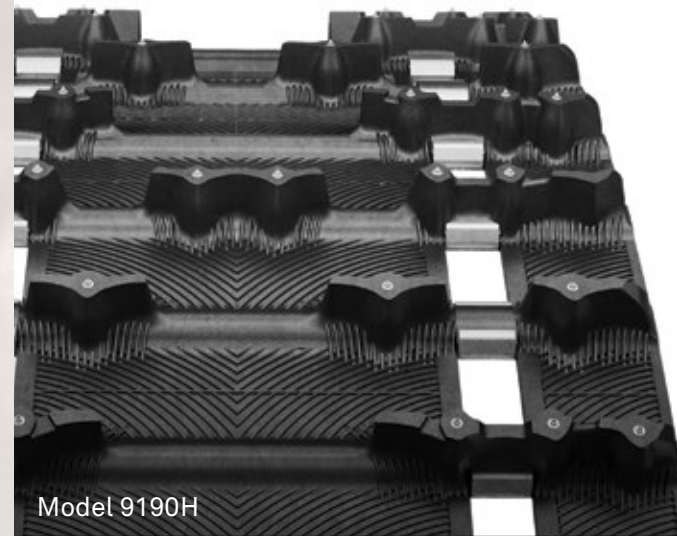
# ON-TRAIL AGGRESSIVE RIDERS, POWER RIDERS OR CRUISERS

**Tame the trails, no matter what the conditions:**

**Cruisers** seeking smooth handling for big-mile efficiency and touring groomed trails all day long.

**Aggressive riders** who live for the adrenaline rush of top-notch traction that slingshots them around corners and crushes moguls.

**Power riders** with a need for speed: pure acceleration across lake trails and endless straightaways.



Model 9190H

CAMSO

# ICE Attak XT

Nailed to the trail

A highly aggressive trail model design featuring hundreds of sharp-tip lug studs, giving riders traction and control they can count on.

- Factory pre-studded for improved traction and control
- Lug design delivers better traction than the ICE Ripper XT
- 1.22" lug height provides better handling and stability
- Optimized rubber compound for superior traction on groomed trails

MODEL	DIMENSIONS	LUG HEIGHT	WEIGHT	DRIVE PITCH	CLIP CONFIG.	
9190H	15 x 120" (38 cm x 305 cm)	1.22" (31 mm)	37 lb. (16.75 kg)	2.86" (73 mm)	Full	▲ ■
9191H	15" x 137" (38 cm x 348 cm)	1.22" (31 mm)	42 lb. (19 kg)	2.86" (73 mm)	Full	▲ ■
9192H	15" x 146" (38 cm x 371 cm)	1.22" (31 mm)	44 lb. (20 kg)	2.86" (73 mm)	Full	▲ ■
9200H	15" x 121" (38 cm x 307 cm)	1.22" (31 mm)	40 lb. (18.25 kg)	2.52" (64 mm)	Full	▲ ■
9201H	15" x 128" (38 cm x 325 cm)	1.22" (31 mm)	42 lb. (19 kg)	2.52" (64 mm)	Full	▲ ■
9202H	15" x 136" (38 cm x 345 cm)	1.22" (31 mm)	45 lb. (20.5 kg)	2.52" (64 mm)	Full	▲ ■
9203H	15" x 144" (38 cm x 365 cm)	1.22" (31 mm)	47 lb. (21.25 kg)	2.52" (64 mm)	Full	▲ ■
9236H	15" x 129" (38 cm x 328 cm)	1.22" (31 mm)	39 lb. (17.75 kg)	2.86" (73 mm)	Full	▲ ■

▲ Embedded sharp tip lug studs ■ Single-ply construction ● Enhanced stud easy tracks



Model 9077H

## CAMSO ICE Ripper XT

Handles and holds

The original factory pre-studded track is a proven performer. With a design that gives riders outstanding handling and stability, it's a true classic.

- Factory pre-studded for improved traction and control
- 1.25" lug height for improved traction and stability
- RipSaw-based attack angled lugs for excellent forward and lateral bite



Model 9156H

## CAMSO RipSaw I

All-around performer in all types of snow

Designed for all-around trail performance – excellent traction on both hard-pack and loose, less compacted snow with ride comfort features.

- Tapered outside lug edges for less side bite when cornering
- Sharp angled lugs for excellent bite on hard-pack snow
- Cupped center and full outer lugs for traction on loose, less compacted snow
- Lug design generates less noise for improved rider comfort on hard-packed groomed trails

MODEL	DIMENSIONS	LUG HEIGHT	WEIGHT	DRIVE PITCH	CLIP CONFIG.	
9077H	15" x 121" (38 cm x 307 cm)	1.25" (32 mm)	39 lb. (17.75 kg)	2.52" (64 mm)	Full	▲ ■
9079H	15" x 136" (38 cm x 345 cm)	1.25" (32 mm)	44 lb. (20 kg)	2.52" (64 mm)	Full	▲ ■
9164H	15" x 120" (38 cm x 305 cm)	1.25" (32 mm)	36 lb. (16.25 kg)	2.86" (73 mm)	Full	▲ ■

MODEL	DIMENSIONS	LUG HEIGHT	WEIGHT	DRIVE PITCH	CLIP CONFIG.	
9156H	15" x 120" (38 cm x 305 cm)	1.25" (32 mm)	36 lb. (16.25 kg)	2.86" (73 mm)	Full	■
9158H	15" x 120" (38 cm x 305 cm)	1" (25 mm)	32 lb. (14.5 kg)	2.86" (73 mm)	Full	■
9209H	15" x 120" (38 cm x 305 cm)	1.25" (32 mm)	37 lb. (16.75 kg)	2.86" (73 mm)	Full	
9210H	15" x 120" (38 cm x 305 cm)	1" (25 mm)	33 lb. (15 kg)	2.86" (73 mm)	Full	
9214H	15" x 121" (38 cm x 307 cm)	1.25" (32 mm)	41 lb. (18.5 kg)	2.52" (64 mm)	Full	
9215H	15" x 128" (38 cm x 325 cm)	1.25" (32 mm)	43 lb. (19.5 kg)	2.52" (64 mm)	Full	
9216H	15" x 136" (38 cm x 345 cm)	1.25" (32 mm)	45 lb. (20.5 kg)	2.52" (64 mm)	Full	
9223H	15" x 137" (38 cm x 348 cm)	1.25" (32 mm)	42 lb. (19 kg)	2.86" (73 mm)	Full	
9224H	15" x 137" (38 cm x 348 cm)	1" (25 mm)	38 lb. (17.25 kg)	2.86" (73 mm)	Full	
9237H	15" x 129" (38 cm x 328 cm)	1.25" (32 mm)	39 lb. (17.75 kg)	2.86" (73 mm)	Full	
<b>NEW</b> 9325H	15" X 129" (38 cm x 328 cm)	1" (25 mm)	35 lb. (15.87 kg)	2.86" (73 mm)	Full	



Model 9052H

CAMSO  
**Cobra**

Keep a firm grip on the trail

Designed for comfort as well as superior traction and control on soft, loose and unpacked snow surfaces.

- Cupped lugs for superior acceleration and braking in loose soft snow conditions
- Flexible lug design for superior off-trail performance
- Softer, thinner lugs generate less noise for improved rider comfort



Model 9968H144  
Enhanced stud easy tracks

CAMSO  
**RipSaw**

Excellent durability and traction

One of the best trail tracks ever offered and still a bestseller today, with rigid, hard-wearing lugs for mile after mile of dependable use. A wide range of sizes fits many different snowmobiles. This is the benchmark model for high-performance trail tracks, with excellent durability and traction on groomed or hard-pack snow.

- Rigid lugs provide superior handling, acceleration, and braking on groomed trails
- Narrow lug base for reduced rolling resistance and maximum top speed
- Angled profiles for aggressive forward and lateral bite

MODEL	DIMENSIONS	LUG HEIGHT	WEIGHT	DRIVE PITCH	CLIP CONFIG.
9052H	15" x 121" (38 cm x 307 cm)	1.352" (34 mm)	37 lb. (16.75 kg)	2.52" (64 mm)	Full
9061H	15" x 136" (38 cm x 345 cm)	1.352" (34 mm)	42 lb. (19 kg)	2.52" (64 mm)	Full
9081H	15" x 128" (38 cm x 325 cm)	1.352" (34 mm)	40 lb. (18.25 kg)	2.52" (64 mm)	Full
9107H	15" x 144" (38 cm x 366 cm)	1.352" (34 mm)	44 lb. (20 kg)	2.52" (64 mm)	Full
9120H <sup>1</sup>	15" X 146" (38 cm x 371 cm)	1.352" (34mm)	40 lb. (18.25 kg)	2.86" (73 mm)	Full
9235H	15" x 129" (38 cm x 328 cm)	1.352" (34 mm)	36 lb. (16.25 kg)	2.86" (73 mm)	Full
9284H	15" x 120" (38 cm x 305 cm)	1.352" (34 mm)	34 lb. (15.5 kg)	2.86" (73 mm)	Full
9307H	15" x 137" (38 cm x 348 cm)	1.352" (34 mm)	39 lb. (17.75 kg)	2.86" (73 mm)	Full

MODEL	DIMENSIONS	LUG HEIGHT	WEIGHT	DRIVE PITCH	CLIP CONFIG.
9001H	13.5" x 128" (34 cm x 325 cm)	1.25" (32 mm)	34 lb. (15.5 kg)	2.52" (64 mm)	Every 3 <sup>rd</sup> / closed windows
9006H	15" X 144" ( 38 cm x 366 cm)	1.25" (32 mm)	45 lb. ( 20.5 kg)	2.52" (64 mm)	Full
9007H	15" X 151" ( 38 cm x 383 cm)	1.25" (32 mm)	49 lb. ( 22.25 kg)	2.52" (64 mm)	Full
9040H	15" x 128" (38 cm x 325 cm)	1.25" (32 mm)	41 lb. (18.5 kg)	2.52" (64 mm)	Full
9146H	15" x 121" (38 cm x 307 cm)	1.25" (32 mm)	35 lb. (16 kg)	2.52" (64 mm)	Every 3 <sup>rd</sup> / open windows ■
9148H	15" x 120" (38 cm x 305 cm)	1" (25 mm)	32 lb. (14.5 kg)	2.86" (73 mm)	Full
9149H	15" x 120" (38 cm x 305 cm)	1.25" (32 mm)	35 lb. (16 kg)	2.86" (73 mm)	Full
9968H	15" x 121" (38 cm x 307 cm)	1.25" (32 mm)	40 lb. (18.25 kg)	2.52" (64 mm)	Full
9968H144	15" x 121" (38 cm x 307 cm)	1.25" (32 mm)	38 lb. (17.25 kg)	2.52" (64 mm)	Full ●
9969H	15" x 136" (38 cm x 345 cm)	1.25" (32 mm)	43 lb. (19.5 kg)	2.52" (64 mm)	Full

<sup>1</sup> These track models feature center hole for third driver.



Model 9028H

## CAMSO ICE Attak

Top handling and speed for trail cruising

Popular with trail cruisers, with tried and tested sharp-tip studs. An excellent choice for snowmobiles that cannot fit taller tracks, it's designed to deliver outstanding top speed and handling on hard-pack snow.

- Factory pre-studded with aggressive 31-point stud pattern
- HackSaw-based lug design for good top speed and handling on hard-pack snow
- 1.063" lug height for average trail use and efficiency
- 1.375" lug height for mixed on/off-trail use



Model 9043H144  
Enhanced stud easy track

## CAMSO HackSaw

Durability meets efficiency and speed

A proven performer in the 1" category. Attack angle lugs guarantee superior performance on hard-groomed snow trails.

- 1" lug height for low rolling resistance that improves fuel economy
- Crescent lug features recessed tips and cutting edges for forward and lateral bite on hard-pack
- Hard-wearing rigid lugs for mile after mile of dependable use
- Narrow lug base to reduce rolling resistance and maximize top speed

MODEL	DIMENSIONS	LUG HEIGHT	WEIGHT	DRIVE PITCH	CLIP CONFIG.	
9028H	15" x 121" (38 cm x 307 cm)	1.063" (27 mm)	38 lb. (17.25 kg)	2.52" (64 mm)	Full	▲ ■
9029H	15" x 136" (38 cm x 345 cm)	1.063" (27 mm)	43 lb. (19.5 kg)	2.52" (64 mm)	Full	▲ ■
9037H	15" x 128" (38 cm x 325 cm)	1.063" (27 mm)	40 lb. (18.25 kg)	2.52" (64 mm)	Full	▲ ■
9106H	15" x 144" (38 cm x 366 cm)	1.063" (27 mm)	45 lb. (20.5 kg)	2.52" (64 mm)	Full	▲ ■
9134H	16" x 137" (41 cm x 348 cm)	1.375" (35 mm)	49 lb. (22.25 kg)	2.86" (73 mm)	Full	▲ ■

MODEL	DIMENSIONS	LUG HEIGHT	WEIGHT	DRIVE PITCH	CLIP CONFIG.	
9009H	15" x 121" (38 cm x 307 cm)	1" (25 mm)	33 lb. (15 kg)	2.52" (64 mm)	Every 3 <sup>rd</sup> / open windows	
9010H	15" x 136" (38 cm x 345 cm)	1" (25 mm)	40 lb. (18.25 kg)	2.52" (64 mm)	Full	
9027H <sup>1</sup>	14" x 121" (36 cm x 307 cm)	1" (25 mm)	35 lb. (16 kg)	2.52" (64 mm)	Full	
9043H144	15" x 121" (38 cm x 307 cm)	1" (25 mm)	36 lb. (16.25 kg)	2.52" (64 mm)	Full	●
9110H <sup>1</sup>	14" x 128" (36 cm x 325 cm)	1" (25 mm)	34 lb. (15.5 kg)	2.52" (64 mm)	Full	
9160H <sup>1</sup>	14" x 144" (36 cm x 366 cm)	1" (25 mm)	38 lb. (17.25 kg)	2.52" (64 mm)	Full	
9234H	15" x 128" (38 cm x 325 cm)	1" (25 mm)	35 lb. (16 kg)	2.52" (64 mm)	Every 3 <sup>rd</sup> / open windows	



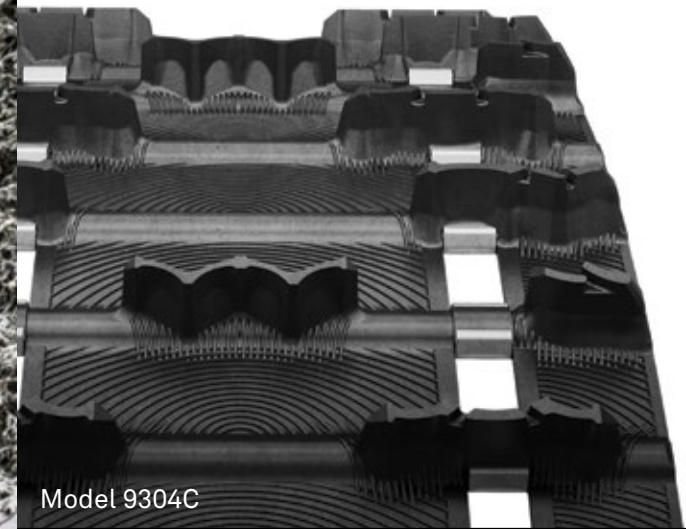
CROSS-COUNTRY

# 50/50 AND BACKCOUNTRY RIDERS

**Boost your crossover or trail sled**

**50/50 riders** rack up the trail miles, but give them half a chance and they're off the trail, playing in an open untracked meadow or riding a ditch line.

**Backcountry riders** don't need any second invitations to head out into untravelled pristine powder and deep snow.



Model 9304C

CAMSO

# RipSaw II 1.5

All-around on- and off-trail performer

The RipSaw II, known for its versatility in all snow types, is taken to another level. Now boasting a 1.5-inch lug height, it's the track for the most demanding 50/50 rider.

- Sharp angled lugs provide excellent bite on hard-pack snow
- Cupped center and full outer lugs provide traction on loose, less compacted snow
- Tapered outside lug edges offer less side bite when cornering

MODEL	DIMENSIONS	LUG HEIGHT	WEIGHT	DRIVE PITCH	CLIP CONFIG.
9304C	15" x 120" (38 cm x 305 cm)	1.5" (38 mm)	37 lb. (16.8 kg)	2.86" (73 mm)	Full
9305C	15" x 129" (38 cm x 328 cm)	1.5" (38 mm)	39.5 lb. (17.9 kg)	2.86" (73 mm)	Full
9306C	15" x 137" (38 cm x 348 cm)	1.5" (38 mm)	42 lb. (19.1 kg)	2.86" (73 mm)	Full



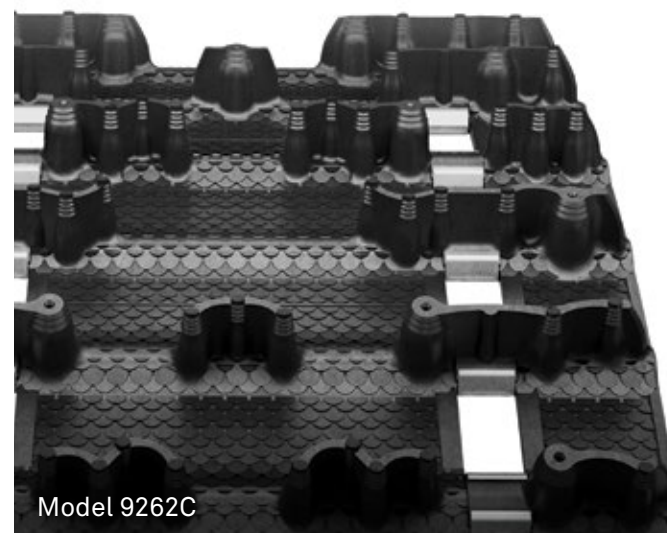
Model 9244H

## CAMSO ICE COBRA 1.6

Hard grip in soft snow

The “Denis Courtemanche Special Edition,” in honor of long-time Camoplast recreational products director who has devoted 50 years to improving snowmobile track design. Factory pre-studded with 1.6" lugs for excellent all-round performance, especially on ungroomed trails.

- Cupped lugs for superior acceleration and braking in loose, soft snow conditions
- Flexible lug design for superior off-trail performance



Model 9262C

## CAMSO COBRA 1.6

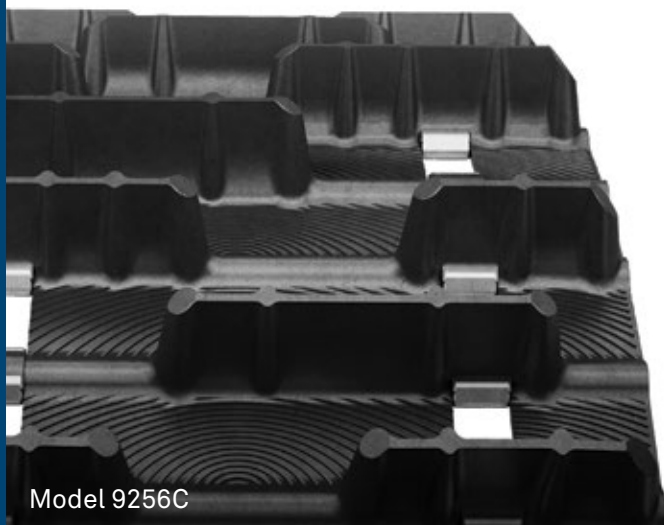
Performance, on or off the trail

The Cobra design taken to another level. Excellent performance on the soft, loose snow of ungroomed trails, now available in a 1.6" lug height for even better traction and performance while on/off-trail .

- Cupped lugs for superior acceleration and braking in loose soft snow conditions
- Flexible lug design for superior off-trail performance
- Designed for factory pre-studded, select lugs are more rigid for traction on hard-packed snow performance

MODEL	DIMENSIONS	LUG HEIGHT	WEIGHT	DRIVE PITCH	CLIP CONFIG.	
9244C	15" x 120" (38 cm x 305 cm)	1.6" (43 mm)	38 lb. (17.25 kg)	2.86" (73 mm)	Full	▲ ■
9245C	15" x 129" (38 cm x 328 cm)	1.6" (43 mm)	41 lb. (18.5 kg)	2.86" (73 mm)	Full	▲ ■
9246C	15" x 137" (38 cm x 348 cm)	1.6" (43 mm)	43 lb. (19.5 kg)	2.86" (73 mm)	Full	▲ ■
9247C	15" x 146" (38 cm x 371 cm)	1.6" (43 mm)	46 lb. (20.9 kg)	2.86" (73 mm)	Full	▲ ■
9249C	16" x 137" (41 cm x 348 cm)	1.6" (43 mm)	45 lb. (20.75 kg)	2.86" (73 mm)	Full	▲ ■
9250C	16" x 146" (41 cm x 371 cm)	1.6" (43 mm)	48 lb. (21.8 kg)	2.86" (73 mm)	Full	▲ ■
9272C	16" x 154" (41 cm x 391 cm)	1.6" (43 mm)	50 lb. (22.5 kg)	2.86" (73 mm)	Full	▲ ■
9273C <sup>1</sup>	15" x 154" (38 cm x 391 cm)	1.6" (43 mm)	47 lb. (21.25 kg)	2.86" (73 mm)	Full	▲ ■
9312C	15" x 121" (38 cm x 307 cm)	1.6" (43 mm)	42 lb. (19.1 kg)	2.52" (64 mm)	Full	▲
9313C	15" x 128" (38 cm x 325 cm)	1.6" (43 mm)	44.5 lb. (20.2 kg)	2.52" (64 mm)	Full	▲
9314C	15" x 136" (38 cm x 345 cm)	1.6" (43 mm)	47 lb. (21.3 kg)	2.52" (64 mm)	Full	▲
9315C	15" x 144" (38 cm x 366 cm)	1.6" (43 mm)	50 lb. (22.7 kg)	2.52" (64 mm)	Full	▲

MODEL	DIMENSIONS	LUG HEIGHT	WEIGHT	DRIVE PITCH	CLIP CONFIG.	
9262C	15" x 120" (38 cm x 305 cm)	1.6" (43 mm)	38 lb. (17.25 kg)	2.86" (73 mm)	Full	■
9263C	15" x 129" (38 cm x 328 cm)	1.6" (43 mm)	40 lb. (18.25 kg)	2.86" (73 mm)	Full	■
9264C	15" x 137" (38 cm x 348 cm)	1.6" (43 mm)	43 lb. (19.5 kg)	2.86" (73 mm)	Full	■
9265C	16" x 137" (41 cm x 348 cm)	1.6" (43 mm)	45 lb. (20.5 kg)	2.86" (73 mm)	Full	■
9282C	16" x 154" (41 cm x 391 cm)	1.6" (43 mm)	50 lb. (22.75 kg)	2.86" (73 mm)	Full	■
9283C <sup>1</sup>	15" x 154" (38 cm x 391 cm)	1.6" (43 mm)	47 lb. (21.25 kg)	2.86" (73 mm)	Full	■
9291C	15" x 120" (38 cm x 305 cm)	1.6" (43 mm)	39 lb. (17.75 kg)	2.86" (73 mm)	Full	
9292C	15" x 129" (38 cm x 328 cm)	1.6" (43 mm)	41 lb. (18.5 kg)	2.86" (73 mm)	Full	
9316C	15" x 144" (38 cm x 366 cm)	1.6" (43 mm)	49.5 lb. (22.5 kg)	2.52" (64 mm)	Full	



Model 9256C

CAMSO

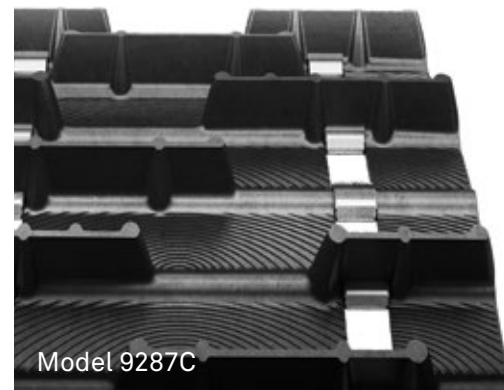
# BackCountry X2

Explore deeper

The BackCountry, taken to another level. Our most popular on/off-trail track, now with a lug height of 2" that lets you explore deep into the backcountry.

- Arched lug design with staggered snocross-inspired pattern for excellent soft snow traction
- Rigid lug support columns and optimized rubber compound to deliver great on/off-trail performance
- 2.86" drive pitch

MODEL	DIMENSIONS	LUG HEIGHT	WEIGHT	DRIVE PITCH	CLIP CONFIG.
9256C	15" x 120" (38 cm x 305 cm)	2" (51 mm)	41 lb. (18.5 kg)	2.86" (73 mm)	Full 
9257C	15" x 129" (38 cm x 328 cm)	2" (51 mm)	43 lb. (19.5 kg)	2.86" (73 mm)	Full 
9258C	15" x 137" (38 cm X 348 cm)	2" (51 mm)	46 lb. (20.75 kg)	2.86" (73 mm)	Full 



Model 9287C

CAMSO



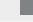


# BackCountry X & BackCountry

Make your own path




Recognized as a frontrunner for on/off-trail riding, with a 1.75" lug height and increased drive pitch. Developed and tested in competitive snocross racing environments, it's designed with traction and durability in mind.

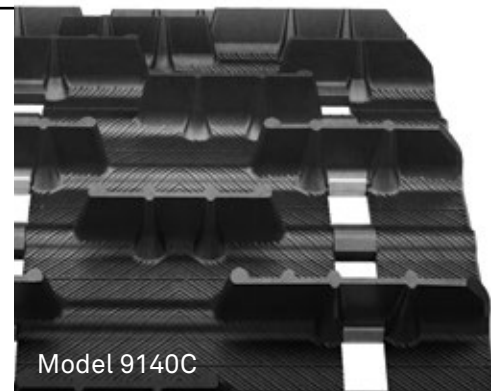
- Arched lug design with staggered snocross-inspired pattern for excellent soft snow traction
- 2.52" drive pitch for BackCountry, 2.86" and 3" drive pitch for BackCountry X
- BackCountry X 2.86" drive pitch models feature tapered lugs on outside edges for improved durability
- Now available in 3" drive pitch for BackCountry X

## BackCountry X

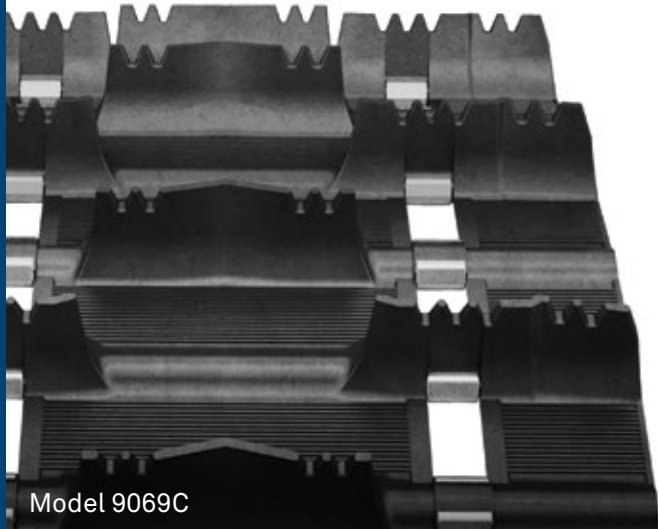
MODEL	DIMENSIONS	LUG HEIGHT	WEIGHT	DRIVE PITCH	CLIP CONFIG.
9254C	15" x 141" (38 cm x 382 cm)	1.75" (44 mm)	43 lb. (19.5 kg)	3" (76 mm)	Full 
9287C	15" x 120" (38 cm x 305 cm)	1.75" (44 mm)	39 lb. (17.5 kg)	2.86" (73 mm)	Full 
9288C	15" x 129" (38 cm x 328 cm)	1.75" (44 mm)	42 lb. (19 kg)	2.86" (73 mm)	Full 
9289C	15" x 137" (38 cm x 345 cm)	1.75" (44 mm)	43 lb. (19.5 kg)	2.86" (73 mm)	Full 
<b>NEW</b> 9328C	15" X 153" (38cm x 388 cm)	1.75" (44 mm)	46 lb. (20.75kg)	3" (76 mm)	Full 

## BackCountry

MODEL	DIMENSIONS	LUG HEIGHT	WEIGHT	DRIVE PITCH	CLIP CONFIG.
9140C	15" x 121" (38 cm x 307 cm)	1.75" (44 mm)	40 lb. (18.25 kg)	2.52" (64 mm)	Full 
9141C	15" x 128" (38 cm x 325 cm)	1.75" (44 mm)	42 lb. (19 kg)	2.52" (64 mm)	Full 
9142C	15" x 136" (38 cm x 345 cm)	1.75" (44 mm)	44 lb. (20 kg)	2.52" (64 mm)	Full 
9143C	15" x 144" (38 cm x 366 cm)	1.75" (44 mm)	46 lb. (20.75 kg)	2.52" (64 mm)	Full 



Model 9140C



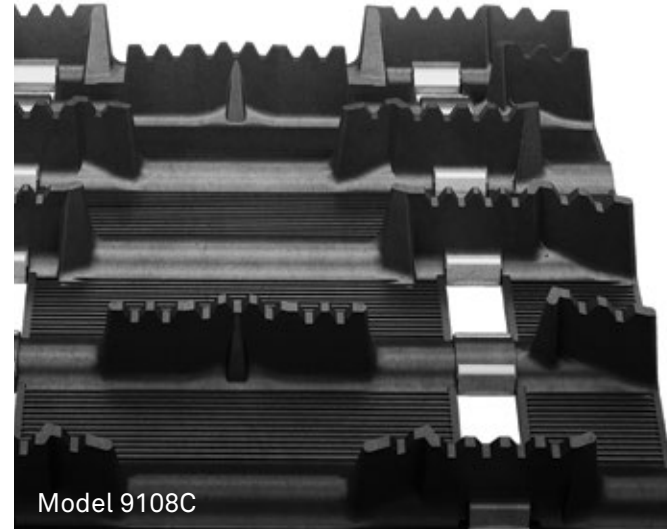
Model 9069C

## CAMSO Challenger Trail

Lead the way

The go-to track for outstanding deep-snow performance since the mid-90s. As an all-around performer that's both versatile and durable, it delivers off-trail capability without sacrificing trail performance.

- Saw-tooth-tipped lugs provide excellent handling, acceleration, and braking on packed trails
- 16" width enhances flotation off-trail in soft snow



Model 9108C

## CAMSO Intense

Purely driven by snow

Featuring a 1.5" lug height for on/off-trail riders, this long-time favorite has a proven record of performance and durability. Excellent performer in all types of snow conditions.

- Saw-tooth-tipped lugs provide excellent handling, acceleration, and braking on packed trails
- V-shaped and full lugs for excellent traction in soft, loose snow

MODEL	DIMENSIONS	LUG HEIGHT	WEIGHT	DRIVE PITCH	CLIP CONFIG.	
9069C	16" x 120" (41 cm x 305 cm)	1.75" (44 mm)	39 lb. (17.5 kg)	2.86" (73 mm)	Full	■
9070C	16" x 137" (41 cm x 348 cm)	1.75" (44 mm)	45 lb. (20.5 kg)	2.86" (73 mm)	Full	■
9167C	16" x 146" (41 cm x 371 cm)	1.75" (44 mm)	51 lb. (23 kg)	2.86" (73 mm)	Full	■
9933C	16" x 136" (41 cm x 345 cm)	1.75" (44 mm)	48 lb. (21.75 kg)	2.52" (64 mm)	Full	

MODEL	DIMENSIONS	LUG HEIGHT	WEIGHT	DRIVE PITCH	CLIP CONFIG.
9108C	15" x 136" (38 cm x 345 cm)	1.5" (38 mm)	41 lb. (18.5 kg)	2.52" (64 mm)	Full
9930C	15" x 121" (38 cm x 307 cm)	1.5" (38 mm)	39 lb. (17.75 kg)	2.52" (64 mm)	Full

## MOUNTAIN

DEEP SNOW  
AND EXTREME RIDERS

## Heading up where few dare to go

**Deep snow mountain riders** head up where few dare to go, and thrive on exploring the high country's open fields and boondocking through virgin forests.

**Deep snow extreme riders** push themselves and their sleds to the limit on bottomless powder and the steepest chutes.



Model 9327M

NEW CAMSO

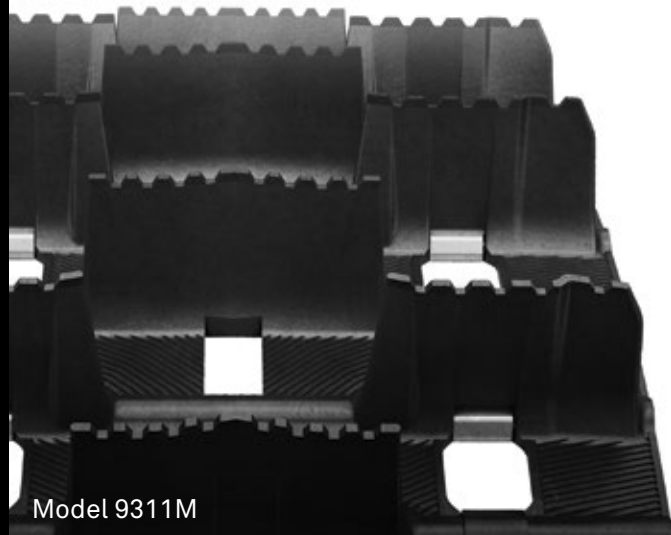
## Conquer 280

Above and beyond the deep stuff

Made to advance the mountain journey. The Conquer is the lightest mountain design track providing the ultimate in flotation, traction and performance. Its next generation lug geometry reaches new levels of balance in deep snow.

- Lightweight model increases available HP thanks to less rotating mass
- New lug design requires 20% less rider input on turns and 25% less throttle to hold on side hills
- 2.8" alternating single-angled lugs push performance in all-season riding conditions.

MODEL	DIMENSIONS	LUG HEIGHT	WEIGHT	DRIVE PITCH	CLIP CONFIG.
9334M	15" x 174" (38 cm x 442 cm)	2.8" (71 mm)	49 lb. (22.25 kg)	3" (76 mm)	Every 2 <sup>nd</sup> / open windows ■
9335M	15" x 162" (38 cm x 411 cm)	2.8" (71 mm)	46 lb. (20.75 kg)	3" (76 mm)	Every 2 <sup>nd</sup> / open windows ■
9336M	15" x 156" (38 cm x 396 cm)	2.8" (71 mm)	44 lb. (20 kg)	3" (76 mm)	Every 2 <sup>nd</sup> / open windows ■
9337M	15" x 153" (38 cm x 389 cm)	2.8" (71 mm)	43 lb. (19.5 kg)	3" (76 mm)	Every 2 <sup>nd</sup> / open windows ■
9340M	15" x 165" (38 cm x 419 cm)	2.8" (71 mm)	45 lb. (20.5 kg)	3.5" (89 mm)	Every 2 <sup>nd</sup> / open windows ■
9341M	15" x 154" (38 cm x 391 cm)	2.8" (71 mm)	42 lb. (19 kg)	3.5" (89 mm)	Every 2 <sup>nd</sup> / open windows ■



Model 9311M

CAMSO

## Challenger X3.2

Tallest lugs around

Built on the performance of the Challenger X3, the X3.2 features the tallest lugs on the market. With notched lug tips for improved performance, it's one of the most versatile mountain tracks on the market.

- Saw-tooth lug design for improved traction and control on packed snow
- 3" drive pitch and advanced molding technology
- Lug geometry and support columns allow lug cup and flex action for unmatched flotation



Model 9219M

CAMSO

## Challenger X3

Move through mountains

Some of the tallest lugs on the market. With 3" lugs, this deep snow technical track provides an efficient and light ride for mountain riders craving performance in extreme powder and while boondocking through trees.

- Single-ply construction, 3" drive pitch and advanced molding technology
- Lug geometry and support columns allow lug cup and flex action for unmatched flotation

MODEL	DIMENSIONS	LUG HEIGHT	WEIGHT	DRIVE PITCH	CLIP CONFIG.
9311M	15" x 174" (38 cm x 442 cm)	3.2" (81 mm)	59 lb. (26.8 kg)	3" (76 mm)	Every 2 <sup>nd</sup> / open windows ■
9319M	15" x 162" (38 cm x 412 cm)	3.2" (81 mm)	54 lb. (24.5 kg)	3" (76 mm)	Every 2 <sup>nd</sup> / open windows ■
9320M	15" x 156" (38 cm x 396 cm)	3.2" (81 mm)	52 lb. (23.6 kg)	3" (76 mm)	Every 2 <sup>nd</sup> / open windows ■
9321M	15" x 153" (38 cm x 389 cm)	3.2" (81 mm)	51 lb. (23.2 kg)	3" (76 mm)	Every 2 <sup>nd</sup> / open windows ■

MODEL	DIMENSIONS	LUG HEIGHT	WEIGHT	DRIVE PITCH	CLIP CONFIG.
9219M	16" x 162" (41 cm x 412 cm)	3" (76 mm)	61 lb. (27.75 kg)	3" (76 mm)	Full ■
9220M	15" x 162" (38 cm x 412 cm)	3" (76 mm)	59 lb. (26.75 kg)	3" (76 mm)	Full ■
9220MSE <sup>1</sup>	15" x 162" (38 cm x 412 cm)	3" (76 mm)	58 lb. (26.25 kg)	3" (76 mm)	Full ■
9270MSE <sup>1</sup>	15" x 156" (38 cm x 396 cm)	3" (76 mm)	57 lb. (25.75 kg)	3" (76 mm)	Full ■
9271M	15" x 174" (38 cm x 442 cm)	3" (76 mm)	64 lb. (29 kg)	3" (76 mm)	Full ■
9309M	15" x 156" (38 cm x 396 cm)	3" (76 mm)	57 lb. (25.75 kg)	3" (76 mm)	Full ■

## CAMSO

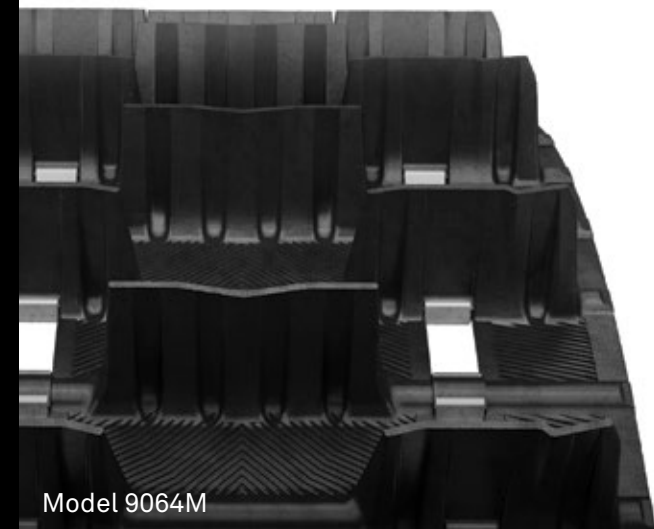
## Challenger

Ride through deep snow

A standard for deep lug tracks. Deep snow riding has never been so versatile and reliable. Delivers outstanding all-around performance in a wide range of mountain-riding conditions.

- 2" and 2.313" lugs heights for traction in deep snow
- Saw-tooth design provides versatility with grip and control on hard snow
- 15" and 16" track width available

Model 9064M



## CAMSO

## Peak 2.5

Traction for a variety of applications

Performs across a wide variety of snow conditions with 2.5" angular lugs. Funnels snow under your snowmobile for extra traction and outstanding flotation.

- Angular lugs bite big and funnel snow under snowmobile for outstanding flotation
- Available with soft lugs for powder snow and hard lugs for heavy/wet snow
- Outer lug bars deliver better lateral control for improved handling

Model 9177M



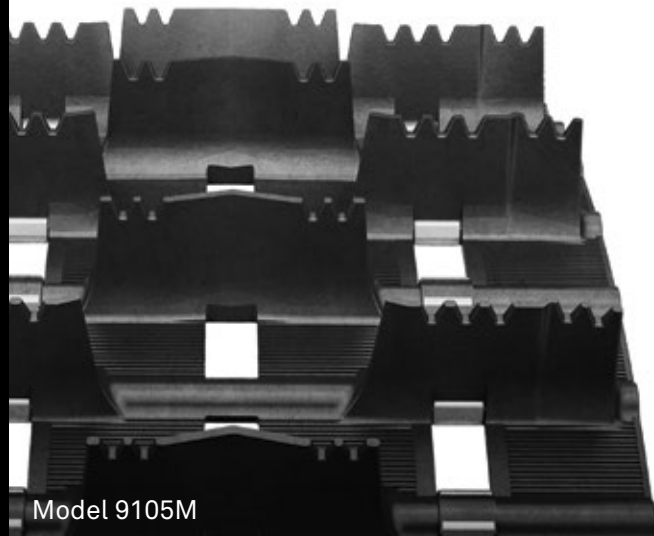
MODEL	DIMENSIONS	LUG HEIGHT	WEIGHT	DRIVE PITCH	CLIP CONFIG.	
9064M	16" x 146" (41 cm x 371 cm)	2.313" (59 mm)	53 lb. (24 kg)	2.86" (73 mm)	Full	■
9065M	16" x 154" (41 cm x 391 cm)	2.313" (59 mm)	55 lb. (25 kg)	2.86" (73 mm)	Full	■
9186M	16" x 137" (41 cm x 348 cm)	2" (51 mm)	49 lb. (22.25 kg)	2.86" (73 mm)	Full	■
9187M	16" x 146" (41 cm x 371 cm)	2" (51 mm)	51 lb. (23 kg)	2.86" (73 mm)	Full	■
9188M	16" x 154" (41 cm x 391 cm)	2" (51 mm)	53 lb. (24 kg)	2.86" (73 mm)	Full	■
9204M	16" x 137" (41 cm x 348 cm)	2.313" (59 mm)	51 lb. (23 kg)	2.86" (73 mm)	Full	■
9797M	15" x 136" (38 cm x 345 cm)	2" (51 mm)	51 lb. (23 kg)	2.52" (64 mm)	Full	■
9798M	15" x 121" (38 cm x 307 cm)	2" (51 mm)	45 lb. (20.5 kg)	2.52" (64 mm)	Full	■
9875M	15" x 144" (38 cm x 366 cm)	2" (51 mm)	53 lb. (24 kg)	2.52" (64 mm)	Full	■
9876M	15" x 151" (38 cm x 383 cm)	2" (51 mm)	55 lb. (25 kg)	2.52" (64 mm)	Full	■

Hard lugs for heavy and wet snow types

MODEL	DIMENSIONS	LUG HEIGHT	WEIGHT	DRIVE PITCH	CLIP CONFIG.	
9177M	16" x 163" (41 cm x 414 cm)	2.5" (64 mm)	63 lb. (28.5 kg)	2.86" (73 mm)	Full	■
9179M	16" x 146" (41 cm x 371 cm)	2.5" (64 mm)	56 lb. (25.5 kg)	2.86" (73 mm)	Full	■
9180M <sup>1</sup>	15" x 163" (38 cm x 414 cm)	2.5" (64 mm)	62 lb. (28 kg)	2.86" (73 mm)	Full	■
9182M <sup>1</sup>	15" x 146" (38 cm x 371 cm)	2.5" (64 mm)	55 lb. (25 kg)	2.86" (73 mm)	Full	■

Softer lugs at the tip and stiff base for powder snow

MODEL	DIMENSIONS	LUG HEIGHT	WEIGHT	DRIVE PITCH	CLIP CONFIG.	
9230M <sup>1</sup>	15" x 154" (38 cm x 392 cm)	2.5" (64 mm)	56 lb. (25.5 kg)	2.86" (73 mm)	Full	■
9231M <sup>1</sup>	15" x 163" (38 cm x 414 cm)	2.5" (64 mm)	59 lb. (26.75 kg)	2.86" (73 mm)	Full	■
9232M	16" x 154" (41 cm x 392 cm)	2.5" (64 mm)	60 lb. (27.25 kg)	2.86" (73 mm)	Full	■
9233M	16" x 163" (41 cm x 414 cm)	2.5" (64 mm)	64 lb. (29 kg)	2.86" (73 mm)	Full	■



Model 9105M

CAMSO

# Challenger Extreme

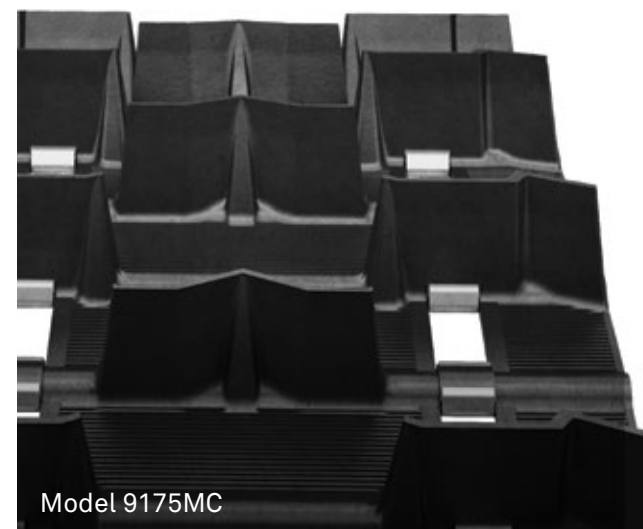
Challenge the mountain in all snow types

Stems from the same design as the classic Challenger but adds even higher saw-tooth lugs that, while versatile, make boondocking bottomless powder and climbing the steepest chutes seem easy.

- Rigid proven design for all-around performance and durability
- Saw-tooth lug design feature for grip on trail and wind-blown snow
- Available in a full range of lengths up to 174" to fit all popular snowmobiles

Saw-tooth lug design for versatility in all snow types

MODEL	DIMENSIONS	LUG HEIGHT	WEIGHT	DRIVE PITCH	CLIP CONFIG.
9035M	15" x 174" (38 cm x 442 cm)	2.5" (64 mm)	63 lb. (28.5 kg)	3" (76 mm)	Full
9036M	16" x 174" (41 cm x 442 cm)	2.5" (64 mm)	69 lb. (31.25 kg)	3" (76 mm)	Full
9102M	16" x 154" (41 cm x 391 cm)	2.5" (64 mm)	59 lb. (26.75 kg)	2.86" (73 mm)	Full
9104M <sup>1</sup>	15" x 154" (38 cm x 391 cm)	2.5" (64 mm)	57 lb. (25.75 kg)	2.86" (73 mm)	Full
9105M <sup>1</sup>	15" x 163" (38 cm x 414 cm)	2.5" (64 mm)	59 lb. (26 kg)	2.86" (73 mm)	Full
9115M	16" x 174" (41 cm x 442 cm)	3" (76 mm)	72 lb. (32.75 kg)	3" (76 mm)	Full
9144M	16" x 146" (41 cm x 371 cm)	2.5" (64 mm)	56 lb. (25.5 kg)	2.86" (73 mm)	Full
9145M <sup>1</sup>	15" x 146" (38 cm x 371 cm)	2.5" (64 mm)	52 lb. (23.5 kg)	2.86" (73 mm)	Full
9225M	16" x 156" (41 cm x 396 cm)	3" (76 mm)	68 lb. (31 kg)	3" (76 mm)	Full



Model 9175MC

CAMSO

# Challenger Extreme

Challenge the mountain in powder snow

Stems from the same design as the classic Challenger but full-cupped lugs that are especially efficient in powder snow and make boondocking in bottomless powder seem easy.

- Full-cupped and deep V lug design for soft powder snow flotation and traction
- 3-inch drive pitch available

Full cupped lug design for powdersnow types

MODEL	DIMENSIONS	LUG HEIGHT	WEIGHT	DRIVE PITCH	CLIP CONFIG.
9174M	15" x 153" (38 cm x 389 cm)	2.5" (64 mm)	57 lb. (25.75 kg)	3" (76 mm)	Full
9175M	15" x 162" (38 cm x 412 cm)	2.5" (64 mm)	55 lb. (25 kg)	3" (76 mm)	Full
9176M	16" x 162" (41 cm x 412 cm)	2.5" (64 mm)	57 lb. (25.75 kg)	3" (76 mm)	Full
<b>NEW</b> 9329M	15" x 141" (38 cm x 382 cm)	2.5" (64 mm)	47 lb. (21.3 kg)	3" (76 mm)	Full



UTILITY  
**HARD-WORKING RIDERS**

**Working on snow, day after day**

**Work utility riders** have a job to do and need a track they can depend on.

**Deep snow utility riders** have to be confident that they can go anywhere, anytime, in demanding and unpredictable conditions.



Model 9260U

CAMSO  
**Cobra SWT**

Durable, high-performance design for wide sleds

The same durable, high-performance design as the Cobra WT, with even wider track for 24" wide applications. For utility users with wide sleds who seek quality.

- Extra tall 1.5" and 1.75" lugs provide optimal traction (1.8" lugs for Cobra WT)
- Cupped lug design ideal in soft, loose snow and for off-trail backcountry exploration
- Lightweight for greater efficiency and improved fuel economy

MODEL	DIMENSIONS	LUG HEIGHT	WEIGHT	DRIVE PITCH	CLIP CONFIG.
9260U	24" x 156" (60 cm x 396 cm)	1.75" (44 mm)	82 lb. (37.25 kg)	2.52" (64 mm)	Full
9261U	24" x 156" (60 cm x 396 cm)	1.5" (38 mm)	80 lb. (36.25 kg)	2.52" (64 mm)	Full



Model 9195U

CAMSO  
**Cobra WT**

High-performance belting to handle heavier loads

Wide-track design for performance with traction to spare in deep, soft or loose snow. Ideal for utility snowmobiles used off-trail with high-performance belting to handle heavier loads without track stretching.

MODEL	DIMENSIONS	LUG HEIGHT	WEIGHT	DRIVE PITCH	CLIP CONFIG.
9195U	20" x 154" (50 cm x 392 cm)	1.8" (46 mm)	65 lb. (29.5 kg)	2.86" (73 mm)	Full
9196U	20" x 154" (50 cm x 392 cm)	1.5" (38 mm)	62 lb. (28.25 kg)	2.86" (73 mm)	Full
9322U <sup>1</sup>	20" x 154" (50 cm x 392 cm)	1.5" (38 mm)	62 lb. (28.25 kg)	2.86" (73 mm)	Full

<sup>1</sup> Features four rows drive lugs for improved fitment on select snowmobiles.



Model 9008U

CAMSO

## ICE WideTrack

Heavy-duty utility traction

Utility sleds need unbeatable flotation and superb reliability to handle the toughest jobs. Featuring extra lateral stability and traction, this track is the only model in the category with a factory pre-studded design for utility snowmobiles using a 20" wide track.

- Finger lug design for superior traction on hard-pack snow
- 1.25" lug height



Model 9002U

CAMSO

## RipSaw Full

Mile after mile of dependable use

A modified version of the tried-and-tested RipSaw design. Ideal for utility use, it features full lug design and its 1.25" lug height is a popular upgrade for utility vehicles fitted with 1" lug tracks.

- 1.25" and 1.375" lug heights
- Full block lugs provide traction in soft, loose snow
- Angled lugs for aggressive forward and lateral bite on hard-packed snow

MODEL	DIMENSIONS	LUG HEIGHT	WEIGHT	DRIVE PITCH	CLIP CONFIG.
9008U	20" x 156" (50 cm x 396 cm)	1.25" (32 mm)	71 lb. (32.25 kg)	2.52" (64 mm)	Full ▲

MODEL	DIMENSIONS	LUG HEIGHT	WEIGHT	DRIVE PITCH	CLIP CONFIG.
9002U	20" x 156" (50 cm x 396 cm)	1.25" (32 mm)	66 lb. (30 kg)	2.52" (64 mm)	Full
9089U	20" x 154" (50 cm x 391 cm)	1.375" (35 mm)	65 lb. (29.5 kg)	2.86" (73 mm)	Full ■
9151U <sup>1</sup>	20" x 156" (50 cm x 396 cm)	1.25" (32 mm)	66 lb. (30 kg)	2.52" (64 mm)	Full

## RACING

## RIDING TO WIN

The speed you need to compete with the best

If you're an **asphalt, ice and grass drag, snocross, ice oval or snow and hill drag racer**, you need tracks that are optimized for racing on competitive courses. When the crowd roars, you know that adrenaline isn't enough to get you across the finish line first.



Model 9293R/9294R/  
9332R/9333R

## CAMSO

## Sno X

A whole lot of holeshots

High-performance designs, custom-tailored for snocross competition and tested and proven by professional race teams. Firm lugs and specialty rubber compounds provide the best holeshots, keeping you ahead of the pack.

- 1.75" lugs, the choice of professional racers
- Calculated lug stiffness for best holeshots
- ISR approved for use in mod class

MODEL	DIMENSIONS	LUG HEIGHT	WEIGHT	DRIVE PITCH	CLIP CONFIG.
9067R <sup>1</sup>	15" x 121" (38 cm x 307 cm)	1.75" (44 mm)	41 lb. (18.5 kg)	2.52" (64 mm)	Full
9205R <sup>1</sup>	15" x 136" (38 cm x 345 cm)	1.75" (44 mm)	46 lb. (20.75 kg)	2.52" (64 mm)	Full
9206R <sup>1</sup>	15" x 144" (38 cm x 366 cm)	1.75" (44 mm)	48 lb. (21.75 kg)	2.52" (64 mm)	Full
9207R <sup>2</sup>	15" x 137" (38 cm x 348 cm)	1.75" (44 mm)	48 lb. (21.75 kg)	2.86" (73 mm)	Full
9208R <sup>2</sup>	15" x 146" (38 cm x 371 cm)	1.75" (44 mm)	49 lb. (22.25 kg)	2.86" (73 mm)	Full
9293R	15" x 120" (38 cm x 305 cm)	1.75" (44 mm)	37 lb. (16.75 kg)	2.86" (73 mm)	Full
9294R	15" x 129" (38 cm x 326 cm)	1.75" (44 mm)	40 lb. (18.25 kg)	2.86" (73 mm)	Full
<b>NEW</b> 9332R	15" x 137" (38 cm x 348 cm)	1.75" (44 mm)	44 lb. (20 kg)	2.86" (73 mm)	Full
<b>NEW</b> 9333R	15" x 146" (38 cm x 371 cm)	1.75" (44 mm)	45 lb. (20.5 kg)	2.86" (73 mm)	Full

▲ Embedded sharp tip lug studs   ■ Single-ply construction   ● Enhanced stud easy tracks

<sup>1</sup> Backcountry design see p. 23  
<sup>2</sup> Backcountry X design see p. 23



Model 9995R/9982R

## CAMSO

## Ice Oval Series

The oval racing champion

High-performance design engineered for the extreme cornering and acceleration of oval racing. Multiple-time oval winner Jacques Villeneuve's track of choice.

- Lightest in class for best efficiency and power transfer
- "Soft" outer rubber compound maximizes traction on ice
- Multiple lug heights for all snow and ice conditions

MODEL	DIMENSIONS	LUG HEIGHT	WEIGHT	DRIVE PITCH	CLIP CONFIG.
9194R <sup>1</sup>	14" x 128" (36 cm x 325 cm)	1" (25 mm)	32 lb. (14.5 kg)	2.52" (64 mm)	Full
9239R <sup>1</sup>	14" x 121" (36 cm x 307 cm)	1" (25 mm)	32 lb. (14.5 kg)	2.52" (64 mm)	Full
9812R <sup>2</sup>	15" x 121" (38 cm x 307 cm)	0.525" (13 mm)	33 lb. (15 kg)	2.52" (64 mm)	Full
9982R	13.5" x 116" (34 cm x 295 cm)	0.725" (18 mm)	28 lb. (12.75 kg)	2.52" (64 mm)	Full
9995R	15" x 116" (38 cm x 295 cm)	0.725" (18 mm)	31 lb. (14 kg)	2.52" (64 mm)	Full
9997R <sup>2</sup>	15" x 121" (38 cm x 307 cm)	0.725" (18 mm)	36 lb. (16.25 kg)	2.52" (64 mm)	Full



Model 9902R

## CAMSO

## Ice and Grass Drag

Ahead of the pack

Designed specifically for the intense acceleration of drag racing, where the first seconds of the race make the difference between winning and losing.

- Low-resistance 0.525" lugs require less fuel for optimal straight-line acceleration
- 13.5" width available for lightweight and maximum top speed
- Multiple lengths for a wide variety of race chassis

MODEL	DIMENSIONS	LUG HEIGHT	WEIGHT	DRIVE PITCH	CLIP CONFIG.
9084R	13.5" x 144" (34 cm x 366 cm)	0.525" (13 mm)	35 lb. (15.75 kg)	2.52" (64 mm)	Full
9811R	15" x 121" (38 cm x 307 cm)	0.525" (13 mm)	33 lb. (15 kg)	2.52" (64 mm)	Full
9902R	13.5" x 128" (34 cm x 325 cm)	0.525" (13 mm)	33 lb. (15 kg)	2.52" (64 mm)	Full
9929R	13.5" x 136" (34 cm x 345 cm)	0.525" (13 mm)	31 lb. (14 kg)	2.52" (64 mm)	No windows / clips
9976R	13.5" x 144" (34 cm x 366 cm)	0.525" (13 mm)	33 lb. (15 kg)	2.52" (64 mm)	No windows / clips

## CAMSO

## Asphalt Drag

Made for asphalt drag competitions

Engineered and built for the unique performance requirements of asphalt drag competitions, where traction and super-fast acceleration are the name of the game.

- Lightweight 10.625" width for maximum top speed
- Soft outer rubber provides traction on paved surfaces
- Multiple lengths for a wide variety of race chassis

MODEL	DIMENSIONS	LUG HEIGHT	WEIGHT	DRIVE PITCH	CLIP CONFIG.
9895R	10.625" x 121" (27 cm x 307 cm)	0.625" (16 mm)	33 lb. (15 kg)	2.52" (64 mm)	No windows / clips
9896R	10.625" x 128" (27 cm x 325 cm)	0.625" (16 mm)	35 lb. (15.75 kg)	2.52" (64 mm)	No windows / clips
9897R	10.625" x 136" (27 cm x 345 cm)	0.625" (16 mm)	37 lb. (16.75 kg)	2.52" (64 mm)	No windows / clips

Model 9895R

## MORE ANSWERS TO YOUR QUESTIONS

### What is the warranty on my new track and what is covered?

All aftermarket tracks have a 2 year from time of purchase against material and workmanship errors.

**Single-ply vs. two-ply tracks?** Single-ply tracks have been tested and proven to be comparable with two-ply tracks for strength, durability and longevity. They've been original equipment on many high-performance snowmobile models for over 9 years. Single-ply tracks require a specifically designed stud and stud retainer. Consult your dealer and refer to the Camso warranty policy statement to determine warranty coverage on studding tracks.

**How is the stud durability and longevity of embedded sharp tip lug studs?** Based on Camso testing, the studs generally outlast the track. The technology has been used and proven in car tires. Studded tire life is generally over 10,000 miles, and such tires are often used on bare asphalt and cars that weigh over a ton.

**How aggressive and effective are the embedded sharp tip lug studs?** Based on Camso testing in regular conditions, the traction and control is comparable to conventional studding quantities for 120" and 121" tracks with 84 to 96 studs. Embedded studs add less than a pound of weight compared to an un-studded track. Tunnel protectors recommended.

**What trail track does Camso offer that performs better in snow than my RipSaw track?** The RipSaw track is great for groomed hard-pack trail riding, but for loose snow or off-trail riding, the Cobra track design offers the best performance. For all-around performance, consider the new RipSaw II design.

**Which track lug heights are available in 13.5" width for trail riding?** Popular size and design is available. The RipSaw, with a 1.25" lug height.

**What track options are available for snowmobiles with 141" track length and 3" drive pitch?** The BackCountry X design, model 9254C, is available and features a lug height of 1.75" (see page 23). The Challenger Extreme, model 9329M is also available with a lug height of 2.5" (see page 33).

**As a consumer, can I purchase tracks directly from Camso?** Camso doesn't sell directly to end-users. Please contact your local powersports dealer for access to our full line of high-performance snowmobile tracks.

« *Being an experienced driver myself and after trying the lightweight Conquer 280 – I feel an average rider will do better in the back-country and really feel the difference and value this track offers.* »

Dennis Durmas,  
Weekender Sports  
Hotchkiss, CO

« *I put thousands of miles per season on my sleds – the ICE Attak XT exceeded my every expectation. The traction is phenomenal in both acceleration and braking. Now I ride in peace of mind! Thanks Camso!* »

Chris Iachini,  
Avid snowmobiler  
Montoursville, PA

« *Camso gets it, understands it, that you need a lightweight yet durable track to perform in the mountains to help the snowmobile in all terrains. The new Camso Conquer 280 has the ability to not sink. That's key!* »

Chris Burandt,  
Pro snowmobiler  
Buena Vista, CO

# OVER 180 TRACKS AVAILABLE

This specification chart shows every track featured in this brochure, sorted by length from the shortest to the longest.

Refer to our track selector tool to help you make the right choice.



## SPECIFICATIONS

LENGTH	LUG HEIGHT	CATEGORY	TRACK DESIGN	MODEL #	REF.
116"	0.725"	Racing	Ice Oval Series	9982R	p. 40
116"	0.725"	Racing	Ice Oval Series	9995R	p. 40
120"	1"	Trail	RipSaw	9148H	p. 15
120"	1"	Trail	RipSaw II	9158H	p. 13
120"	1"	Trail	RipSaw II	9210H	p. 13
120"	1.22"	Trail	ICE Attak XT	9190H	p. 11
120"	1.25"	Trail	ICE Ripper XT	9164H	p. 12
120"	1.25"	Trail	RipSaw	9149H	p. 15
120"	1.25"	Trail	RipSaw II	9156H	p. 13
120"	1.25"	Trail	RipSaw II	9209H	p. 13
120"	1.352"	Trail	Cobra	9284H	p. 14
120"	1.5"	Cross-country	RipSaw II 1.5	9304C	p. 19
120"	1.6"	Cross-country	Cobra 1.6	9262C	p. 21
120"	1.6"	Cross-country	Cobra 1.6	9291C	p. 21
120"	1.6"	Cross-country	ICE Cobra 1.6	9244C	p. 20
120"	1.75"	Cross-country	BackCountry X	9287C	p. 23
120"	1.75"	Cross-country	Challenger Trail	9069C	p. 24
120"	1.75"	Racing	Sno X	9293R	p. 39
120"	2"	Cross-country	BackCountry X2	9256C	p. 22
121"	0.525"	Racing	Grass / Ice Drag	9811R	p. 41
121"	0.525"	Racing	Ice Oval Series	9812R	p. 40
121"	0.625"	Racing	Asphalt Drag	9895R	p. 41
121"	0.725"	Racing	Ice Oval Series	9997R	p. 40
121"	1"	Trail	HackSaw	9009H	p. 17
121"	1"	Trail	HackSaw	9027H	p. 17
121"	1"	Trail	HackSaw	9043H144	p. 17
121"	1"	Racing	Ice Oval Series (HackSaw)	9239R	p. 40
121"	1.063"	Trail	ICE Attak	9028H	p. 16
121"	1.22"	Trail	ICE Attak XT	9200H	p. 11
121"	1.25"	Trail	ICE Ripper XT	9077H	p. 12
121"	1.25"	Trail	RipSaw	9146H	p. 15

LENGTH	LUG HEIGHT	CATEGORY	TRACK DESIGN	MODEL #	REF.
121"	1.25"	Trail	RipSaw	9968H	p. 15
121"	1.25"	Trail	RipSaw	9968H144	p. 15
121"	1.25"	Trail	RipSaw II	9214H	p. 13
121"	1.352"	Trail	Cobra	9052H	p. 14
121"	1.5"	Cross-country	Intense	9930C	p. 25
121"	1.6"	Cross-country	ICE Cobra 1.6	9312C	p. 20
121"	1.75"	Cross-country	BackCountry	9140C	p. 23
121"	1.75"	Racing	Sno X (BackCountry)	9067R	p. 39
121"	2"	Mountain	Challenger	9798M	p. 30
128"	0.525"	Racing	Grass / Ice Drag	9902R	p. 41
128"	0.625"	Racing	Asphalt Drag	9896R	p. 41
128"	1"	Trail	HackSaw	9110H	p. 17
128"	1"	Trail	HackSaw	9234H	p. 17
128"	1"	Racing	Ice Oval Series (HackSaw)	9194R	p. 40
128"	1.063"	Trail	ICE Attak	9037H	p. 16
128"	1.22"	Trail	ICE Attak XT	9201H	p. 11
128"	1.25"	Trail	RipSaw	9001H	p. 15
128"	1.25"	Trail	RipSaw	9040H	p. 15
128"	1.25"	Trail	RipSaw II	9215H	p. 13
128"	1.352"	Trail	Cobra	9081H	p. 14
128"	1.6"	Cross-country	ICE Cobra 1.6	9313C	p. 20
128"	1.75"	Cross-country	BackCountry	9141C	p. 23
129"	1"	Trail	RipSaw II	9325H	p. 13
129"	1.22"	Trail	ICE Attak XT	9236H	p. 11
129"	1.25"	Trail	RipSaw II	9237H	p. 13
129"	1.352"	Trail	Cobra	9235H	p. 14
129"	1.5"	Cross-country	RipSaw II 1.5	9305C	p. 19
129"	1.6"	Cross-country	Cobra 1.6	9263C	p. 21
129"	1.6"	Cross-country	Cobra 1.6	9292C	p. 21

**NEW**

## SPECIFICATIONS

LENGTH	LUG HEIGHT	CATEGORY	TRACK DESIGN	MODEL #	REF.
129"	1.6"	Cross-country	ICE Cobra 1.6	9245C	p. 20
129"	1.75"	Racing	Sno X	9294R	p. 39
129"	1.75"	Cross-country	BackCountry X	9288C	p. 23
129"	2"	Cross-country	BackCountry X2	9257C	p. 22
136"	0.525"	Racing	Grass / Ice Drag	9929R	p. 41
136"	0.625"	Racing	Asphalt Drag	9897R	p. 41
136"	1"	Trail	HackSaw	9010H	p. 17
136"	1.063"	Trail	ICE Attak	9029H	p. 16
136"	1.22"	Trail	ICE Attak XT	9202H	p. 11
136"	1.25"	Trail	ICE Ripper XT	9079H	p. 12
136"	1.25"	Trail	RipSaw	9969H	p. 15
136"	1.25"	Trail	RipSaw II	9216H	p. 13
136"	1.352"	Trail	Cobra	9061H	p. 14
136"	1.5"	Cross-country	Intense	9108C	p. 25
136"	1.6"	Cross-country	ICE Cobra 1.6	9314C	p. 20
136"	1.75"	Cross-country	BackCountry	9142C	p. 23
136"	1.75"	Cross-country	Challenger Trail	9933C	p. 24
136"	1.75"	Racing	Sno X (BackCountry)	9205R	p. 39
136"	2"	Mountain	Challenger	9797M	p. 30
137"	1"	Trail	RipSaw II	9224H	p. 13
137"	1.22"	Trail	ICE Attak XT	9191H	p. 11
137"	1.25"	Trail	RipSaw II	9223H	p. 13
137"	1.352"	Trail	Cobra	9307H	p. 14
137"	1.375"	Trail	ICE Attak	9134H	p. 16
137"	1.5"	Cross-country	RipSaw II 1.5	9306C	p. 19
137"	1.6"	Cross-country	Cobra 1.6	9264C	p. 21
137"	1.6"	Cross-country	Cobra 1.6	9265C	p. 21
137"	1.6"	Cross-country	ICE Cobra 1.6	9246C	p. 20
137"	1.6"	Cross-country	ICE Cobra 1.6	9249C	p. 20
137"	1.75"	Cross-country	BackCountry X	9289C	p. 23
137"	1.75"	Cross-country	Challenger Trail	9070C	p. 24

LENGTH	LUG HEIGHT	CATEGORY	TRACK DESIGN	MODEL #	REF.
137"	1.75"	Racing	Sno X (BackCountry X)	9207R	p. 39
137"	1.75"	Racing	Sno X	9332R	p. 39 <b>NEW</b>
137"	2"	Cross-country	BackCountry X2	9258C	p. 22
137"	2"	Mountain	Challenger	9186M	p. 30
137"	2.313"	Mountain	Challenger	9204M	p. 30
141"	1.75"	Cross-country	BackCountry X	9254C	p. 23
141"	2.5"	Mountain	Challenger Extreme	9329M	p. 33 <b>NEW</b>
144"	0.525"	Racing	Grass / Ice Drag	9084R	p. 41
144"	0.525"	Racing	Grass / Ice Drag	9976R	p. 41
144"	1"	Trail	HackSaw	9160H	p. 17
144"	1.063"	Trail	ICE Attak	9106H	p. 16
144"	1.22"	Trail	ICE Attak XT	9203H	p. 11
144"	1.352"	Trail	Cobra	9107H	p. 14
144"	1.25"	Trail	RipSaw	9006H	p. 15
144"	1.5"	Cross-country	CrossOver	9003C	WEB
144"	1.6"	Cross-country	ICE Cobra 1.6	9315C	p. 20
144"	1.6"	Cross-country	Cobra 1.6	9316C	p. 21
144"	1.75"	Cross-country	BackCountry	9143C	p. 23
144"	1.75"	Racing	Sno X (BackCountry)	9206R	p. 39
144"	2"	Mountain	Challenger	9875M	p. 30
144"	2"	Mountain	Challenger	9899M	p. 30
146"	1.22"	Trail	ICE Attak XT	9192C	p. 11
146"	1.352"	Trail	Cobra	9120M	p. 14
146"	1.6"	Cross-country	ICE Cobra 1.6	9247C	p. 20
146"	1.6"	Cross-country	ICE Cobra 1.6	9250C	p. 20
146"	1.75"	Cross-country	Challenger Trail	9167C	p. 24
146"	1.6"	Racing	Sno X	9333R	p. 39 <b>NEW</b>
146"	1.75"	Racing	Sno X (BackCountry X)	9208R	p. 39
146"	2"	Mountain	Challenger	9187M	p. 30
146"	2.313"	Mountain	Challenger	9064M	p. 30

## SPECIFICATIONS

LENGTH	LUG HEIGHT	CATEGORY	TRACK DESIGN	MODEL #	REF.
146"	2.5"	Mountain	Challenger Extreme	9144M	p. 32
146"	2.5"	Mountain	Challenger Extreme	9145M	p. 32
146"	2.5"	Mountain	Peak 2.5	9179M	p. 31
146"	2.5"	Mountain	Peak 2.5	9182M	p. 31
151"	1.25"	Trail	RipSaw	9007H	p. 15
151"	1.5"	Cross-country	CrossOver	9004C	WEB
151"	2"	Mountain	Challenger	9876M	p. 30
<b>NEW</b> 153"	1.75"	Cross-country	Back-country X	9328C	p. 23
153"	2.5"	Mountain	Challenger Extreme	9174M	p. 33
<b>NEW</b> 153"	2.8"	Mountain	Conquer 280	9337M	p. 27
153"	3.2"	Mountain	Challenger X3.2	9321M	p. 28
154"	1.375"	Utility	RipSaw Full	9089U	p. 37
154"	1.5"	Utility	Cobra WT	9196U	p. 35
154"	1.5"	Utility	Cobra WT	9322U	p. 35
154"	1.6"	Cross-country	ICE Cobra 1.6	9272C	p. 20
154"	1.6"	Cross-country	ICE Cobra 1.6	9273C	p. 20
154"	1.6"	Cross-country	Cobra 1.6	9282C	p. 21
154"	1.6"	Cross-country	Cobra 1.6	9283C	p. 21
154"	1.8"	Utility	Cobra WT	9195U	p. 35
154"	2"	Mountain	Challenger	9188M	p. 30
154"	2.313"	Mountain	Challenger	9065M	p. 30
154"	2.5"	Mountain	Challenger Extreme	9102M	p. 32
154"	2.5"	Mountain	Challenger Extreme	9104M	p. 32
154"	2.5"	Mountain	Peak 2.5	9181M	p. 31
154"	2.5"	Mountain	Peak 2.5	9230M	p. 31
154"	2.5"	Mountain	Peak 2.5	9232M	p. 31
<b>NEW</b> 154"	2.8"	Mountain	Conquer 280	9341M	p. 27
156"	1.25"	Utility	ICE Wide Track	9008U	p. 36
156"	1.25"	Utility	RipSaw Full	9002U	p. 37
156"	1.25"	Utility	RipSaw Full	9151U	p. 37
156"	1.5"	Utility	Cobra SWT	9261U	p. 35

LENGTH	LUG HEIGHT	CATEGORY	TRACK DESIGN	MODEL #	REF.
156"	1.75"	Utility	Cobra SWT	9260U	p. 35
156"	2.8"	Mountain	Conquer 280	9336M	p. 27 <b>NEW</b>
156"	3"	Mountain	Challenger Extreme	9225M	p. 32
156"	3"	Mountain	Challenger X3	9309M	p. 29
156"	3"	Mountain	Challenger X3	9270MSE	p. 29
156"	3.2"	Mountain	Challenger X3.2	9320M	p. 28
159"	1.5"	Cross-country	CrossOver	9005C	WEB
162"	2.5"	Mountain	Challenger Extreme	9175M	p. 33
162"	2.5"	Mountain	Challenger Extreme	9176M	p. 33
162"	2.8"	Mountain	Conquer 280	9335M	p. 27 <b>NEW</b>
162"	3"	Mountain	Challenger X3	9219M	p. 29
162"	3"	Mountain	Challenger X3	9220M	p. 29
162"	3"	Mountain	Challenger X3	9220MSE	p. 29
162"	3.2"	Mountain	Challenger X3.2	9319M	p. 28
163"	2.5"	Mountain	Challenger Extreme	9105M	p. 32
163"	2.5"	Mountain	Peak 2.5	9177M	p. 31
163"	2.5"	Mountain	Peak 2.5	9180M	p. 31
163"	2.5"	Mountain	Peak 2.5	9231M	p. 31
163"	2.5"	Mountain	Peak 2.5	9233M	p. 31
165"	2.8"	Mountain	Conquer 280	9340M	p. 27 <b>NEW</b>
174"	2.5"	Mountain	Challenger Extreme	9035M	p. 32
174"	2.5"	Mountain	Challenger Extreme	9036M	p. 32
174"	2.8"	Mountain	Conquer 280	9334M	p. 27 <b>NEW</b>
174"	3"	Mountain	Challenger Extreme	9115M	p. 32
174"	3"	Mountain	Challenger X3	9271M	p. 29
174"	3.2"	Mountain	Challenger X3.2	9311M	p. 28