



2019 CAMSO SNOWMOBILE TRACKS

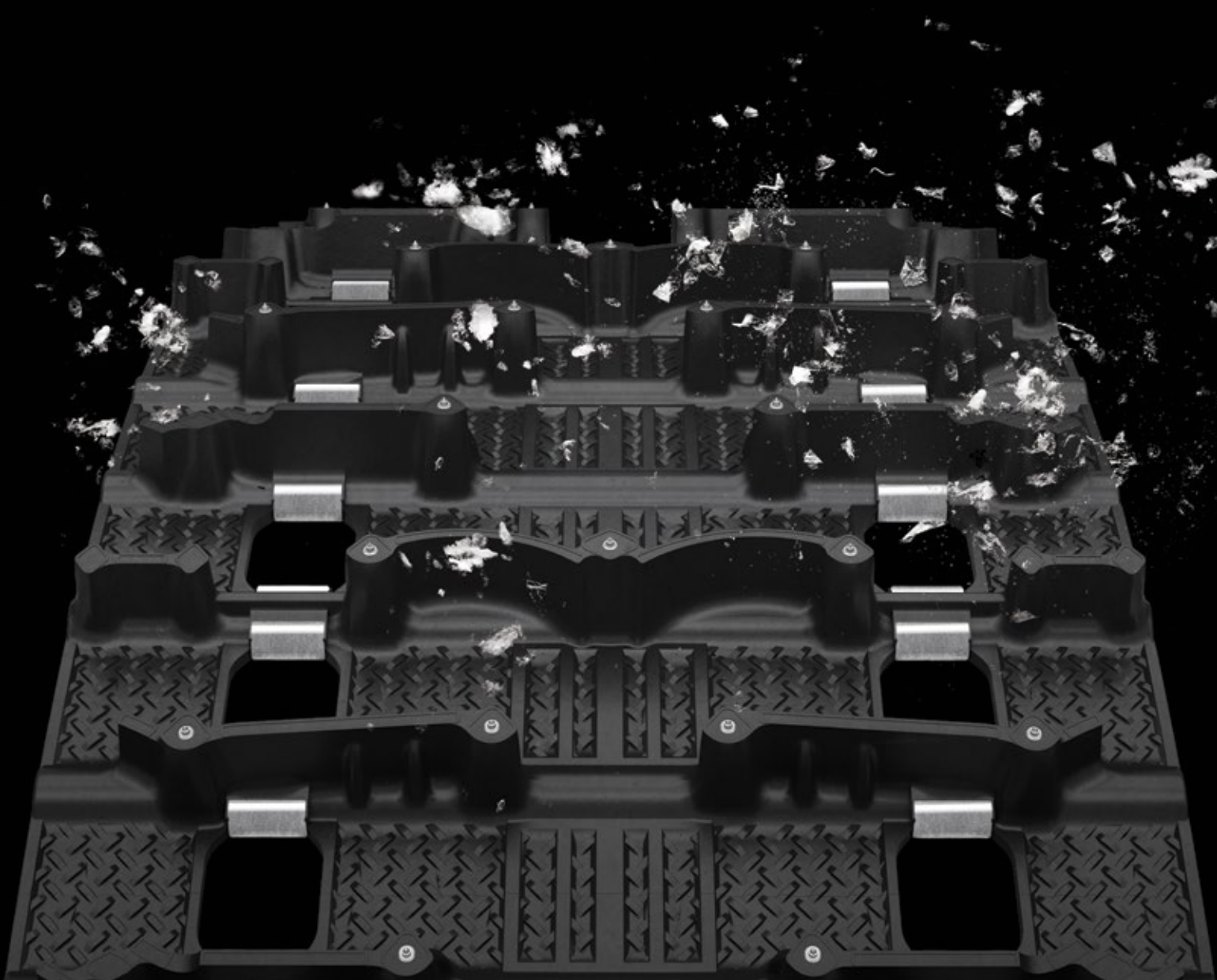




TABLE OF CONTENTS

Feel the difference _____	4
Whatever your style is _____	5
Do more with technology _____	6
Trail	8
Cross-Country	16
Mountain	24
Utility	30
Racing	34
The 4 keys to track selection _____	38
Search by length (specifications) _____	39

WHY A NEW TRACK?

For a number of reasons...Has your sled lost the edge it had when you first bought it? Are you looking to do more with your stock machine? Because a replacement track can push your journey to new levels of performance. Why shell out big bucks for a new sled or risk voiding your warranty with performance-enhancing engine modifications? Camso tracks are an effective and affordable way to extend the life of your sled.

Feel the difference

Camso track will go beyond limits.

- Better traction on any surface
- Better handling and stability
- Quicker acceleration
- Shorter stopping distances on hard surfaces
- Better flotation in soft, deep snow



WHATEVER YOUR STYLE IS, CAMSO HAS THE RIGHT TRACK

It doesn't matter if you're a recreational rider or a racer, whether you prefer groomed trails or backcountry exploration, whether you seek the adrenaline rush of steep terrain or the comfort of a casual cruise in the countryside. As riders, we share one thing: our passion for snow. We love it. We pray for it. We live the journey.

To get the maximum excitement out of your sled in the conditions you prefer, select the best track for the type of rider you are.

TRAIL

You're someone who loves well-defined routes, a cruiser doing big mileage, an aggressive rider with a thrill of top-notch traction, or a power rider flooring it on the straightaways.

- Groomed snowmobile trails
- Ungroomed trails used enough to be compacted most or all of the time
- Bare or lightly covered ice with special traction challenges

CROSS-COUNTRY

You prefer deeper, looser snow. Racking up the miles in the backcountry? Check. Half on-trail, half off? Check.

- Ditch lines
- Less-used and completely ungroomed trails
- Boondocking in remote areas with no trails

MOUNTAIN

You relish any trip that involves high-country open meadows, boondocking in the trees and lots of deep snow.

- Deep powder snow with a light track for maximum traction and flotation
- High-altitude terrain
- Steep slopes

UTILITY

You're working in the snow. You have a job to do in demanding and unpredictable conditions.

- Transportation of personnel and tools
- Pulling equipment and material
- Unpredictable snow and terrain

RACING

You are competing on a specific terrain and controlled course:

- Asphalt
- Ice and grass drag
- Ice oval
- Snocross
- Snow and hill drag

DO MORE WITH TECHNOLOGY

All our tracks are manufactured internally through a unique process that cures the final product in full form and in one step.

Our technology ensures the product is balanced and reduces track vibration. We analyze different lug designs and evaluate what features would aid flotation and traction.

Material selection and placement creates the lightest weight, most efficient track on the market.

The result? The summit of durability and performance helping riders go further in any condition or environment.

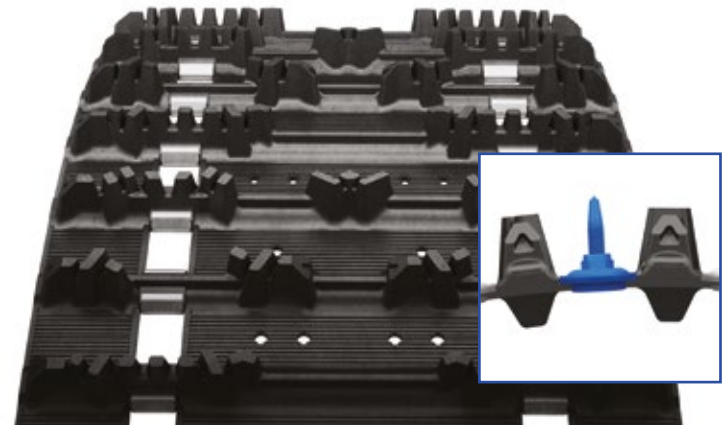


● | Enhanced stud easy tracks*

Our pre-holed models are a great choice for trail sled applications.

- No drilling necessary, with quick, easy stud installation
- Track belting is enhanced and properly punched for studding
- Featured stud patterns developed by the industry's leading traction manufacturer
- One-year limited warranty[†]

[†] Studs and related hardware not covered by Camso warranty policy. Contact stud and related hardware manufacturer for warranty policy.



* Find those pictograms on the product pages to help you

■ | Single-ply construction*

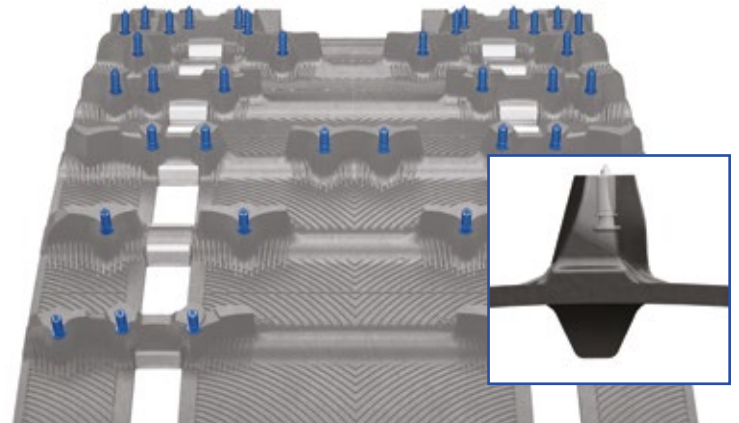
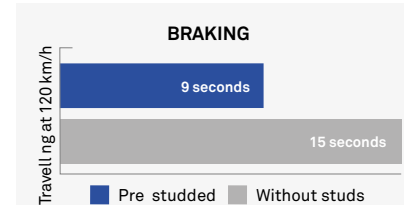
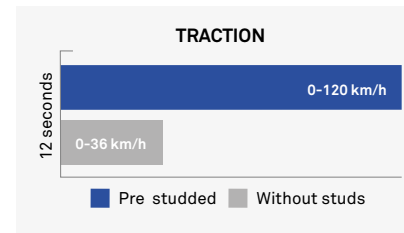
Advanced track carcass technology reduces weight and improves performance.

- Lower internal friction means you use less engine power
- Reduced rolling resistance for improved top speed and fuel economy
- Cooler running results in longer track life

▲ | Embedded sharp tip lug studs*

Our factory pre-studded tracks provide enhanced traction and control over tracks without studs as well as convenience and savings compared to conventional studding.

- Better control on icy hills and corners
- Only adds 1lb of weight to the track
- Eliminates stud installation time and trouble
- No stud installation or maintenance costs



choose the right track for your sled.

TRAILS

On-trail aggressive riders, power riders or cruisers

Tame the trails, no matter what the conditions:

Cruisers seeking smooth handling for big-mile efficiency and touring groomed trails all day long.

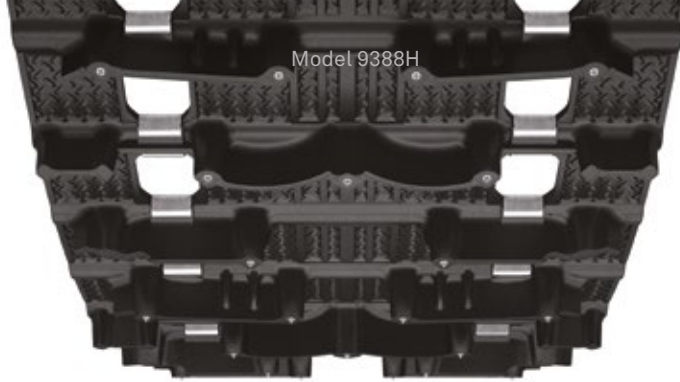
Aggressive riders who live for the adrenaline rush of top-notch traction that slingshots them around corners and crushes moguls.

Power riders with a need for speed : pure acceleration across lake trails and endless straightaways.



WHICH TRAIL TRACK IS RIGHT FOR YOU?

		LUG HEIGHT (in)											
		ICE Storm 150 ▲	Storm 150	Cobra	RipSaw	RipSaw II	ICE Ripper XT ▲	ICE Attak XT ▲	ICE Attak ▲	HackSaw	RipSaw	RipSaw II	
		1.5	1.5	1.352	1.25	1.25	1.25	1.22	1.063	1	1	1	
RIDING STYLE	AGGRESSIVE	Versatility	■	■			■		■				
		Mostly Groomed	■	■		■				■			
		Mostly Ungroomed	■	■	■				■				
	POWER	Trail					■			■			■
		Lake				■					■	■	
	CRUISER	Traction					■		■	■			■
		Efficiency						■			■	■	



Model 9388H



Model 9368H

NEW CAMSO**ICE Storm 150**

Precision and control

With its factory-installed studs, the Camso Ice Storm 150 makes precise turns on icy hills, packed snow and groomed trails, powering you through the most challenging conditions with ease. And Camso's unique two-height lug design offers deep snow flotation with handlebar-gripping acceleration.

- Factory pre-studded for improved traction and control on ice conditions
- 1.25" outer lugs provide power through the tightest turns with ease, maintaining momentum and rider control
- 1.5" cup-shaped centre lugs provide deep snow flotation, and gut wrenching acceleration on packed trails

CAMSO

Storm 150

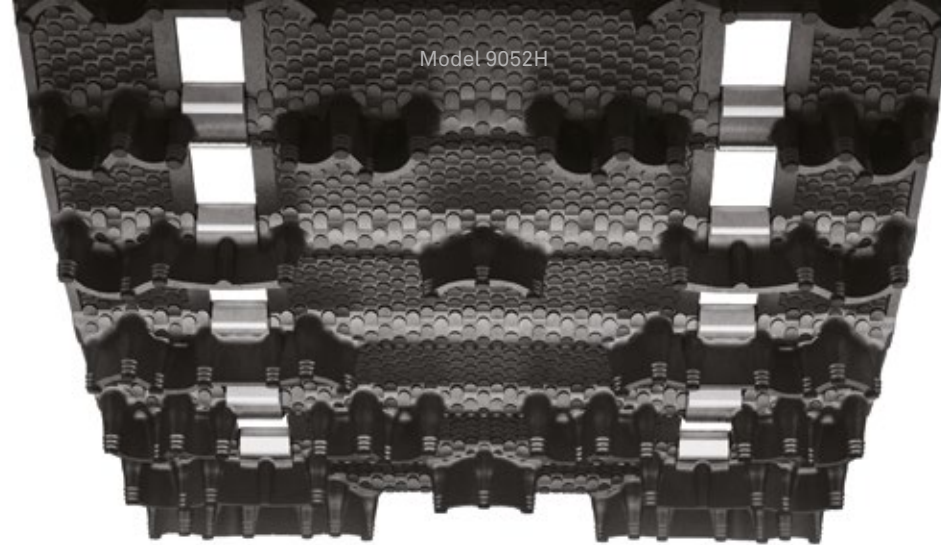
Precision and thundering acceleration

For aggressive adrenaline-fueled performance both on and off trail. The Camso Storm 150 is designed for modern rider-forward with a unique two-lug height design. It provides breathtaking acceleration on-trail, excellent flotation off-trail and crisp control under all circumstances.

- 1.25" outer lugs provide power through the tightest turns with ease, maintaining momentum and rider control
- 1.5" cup-shaped centre lugs provide deep snow flotation, and gut wrenching acceleration on packed trails
- Optimized support columns provide the right balance of lug rigidity and flex for performance across the entire power band

	MODEL	DIMENSIONS	LUG HEIGHT	WEIGHT	DRIVE PITCH	NB. STUDS	CLIP CONFIG.		MODEL	DIMENSIONS	LUG HEIGHT	WEIGHT	DRIVE PITCH	CLIP CONFIG.
NEW	9388H	15" x 120" (38 cm x 305 cm)	1.5" (38mm)	34.7 lb. (15.7 kg)	2.86" (73 mm)	126	Full ▲ ■		9368H	15" x 120" (38 cm x 305 cm)	1.5" (38mm)	34.7 lb. (15.7 kg)	2.86" (73 mm)	Full
NEW	9389H	15" x 129" (38 cm x 328 cm)	1.5" (38mm)	37.2 lb. (16.9 kg)	2.86" (73 mm)	135	Full ▲ ■		9369H	15" x 129" (38 cm x 328 cm)	1.5" (38mm)	37.2 lb. (16.9 kg)	2.86" (73 mm)	Full
NEW	9390H	15" x 137" (38 cm x 348 cm)	1.5" (38mm)	39.6 lb. (17.9 kg)	2.86" (73 mm)	144	Full ▲ ■		9370H	15" x 137" (38 cm x 348 cm)	1.5" (38mm)	39.6 lb. (17.9 kg)	2.86" (73 mm)	Full
NEW	9391H	15" x 146" (38 cm x 370 cm)	1.5" (38mm)	42.1 lb. (19.1 kg)	2.86" (73 mm)	153	Full ▲ ■		9371H	15" x 146" (38 cm x 370 cm)	1.5" (38mm)	42.1 lb. (19.1 kg)	2.86" (73 mm)	Full

Model 9052H



CAMSO

Cobra

Keep a firm grip on the trail

Designed for comfort as well as superior traction and control on soft, loose and unpacked snow surfaces.

- Cupped lugs for superior acceleration and braking in loose soft snow conditions
- Flexible lug design for superior off-trail performance
- Softer, thinner lugs generate less noise for improved rider comfort

MODEL	DIMENSIONS	LUG HEIGHT	WEIGHT	DRIVE PITCH	CLIP CONFIG.
9052H	15" x 121" (38 cm x 307 cm)	1.352" (34 mm)	37 lb. (16.75 kg)	2.52" (64 mm)	Full
9061H	15" x 136" (38 cm x 345 cm)	1.352" (34 mm)	42 lb. (19 kg)	2.52" (64 mm)	Full
9107H	15" x 144" (38 cm x 366 cm)	1.352" (34 mm)	44 lb. (20 kg)	2.52" (64 mm)	Full
9120H ¹	15" x 146" (38 cm x 371 cm)	1.352" (34 mm)	40 lb. (18.25 kg)	2.86" (73 mm)	Full
9235H	15" x 129" (38 cm x 328 cm)	1.352" (34 mm)	36 lb. (16.25 kg)	2.86" (73 mm)	Full
9284H	15" x 120" (38 cm x 305 cm)	1.352" (34 mm)	34 lb. (15.5 kg)	2.86" (73 mm)	Full
9307H	15" x 137" (38 cm x 348 cm)	1.352" (34 mm)	39 lb. (17.75 kg)	2.86" (73 mm)	Full

¹ These track models feature center hole for third driver.

Model 9968H144
Enhanced stud
easy tracks

Model 9156H

CAMSO RipSaw

Excellent durability and traction

One of the best trail tracks ever offered and still a best seller today, with rigid, hard-wearing lugs for mile after mile of dependable use. A wide range of sizes fits many different snowmobiles. This is the benchmark model for high-performance trail tracks, with excellent durability and traction on groomed or hard-pack snow.

- Rigid lugs provide superior handling, acceleration, and braking on groomed trails
- Narrow lug base for reduced rolling resistance and maximum top speed
- Angled profiles for aggressive forward and lateral bite

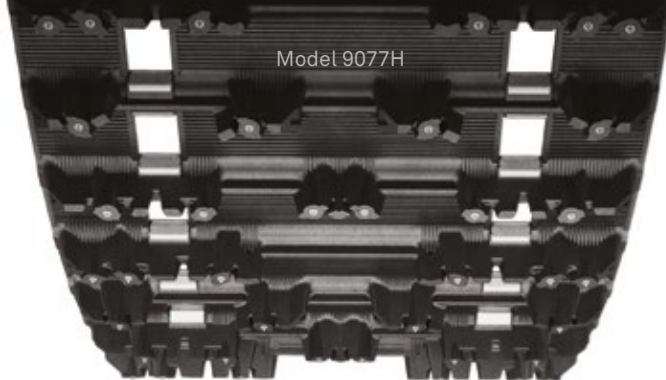
CAMSO RipSaw II

All-around performer in all types of snow

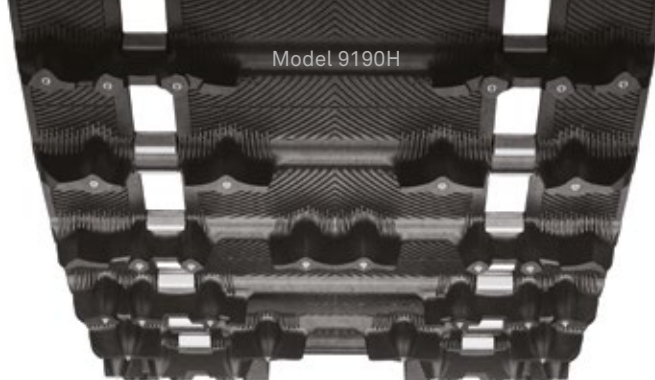
Designed for all-around trail performance – excellent traction on both hard-pack and loose, less-compacted snow with ride comfort features.

- Tapered outside lug edges for less side bite when cornering
- Sharp angled lugs for excellent bite on hard-pack snow
- Cupped center and full outer lugs for traction on loose, less-compacted snow
- Lug design generates less noise for improved rider comfort on hard-packed groomed trails

MODEL	DIMENSIONS	LUG HEIGHT	WEIGHT	DRIVE PITCH	CLIP CONFIG.	MODEL	DIMENSIONS	LUG HEIGHT	WEIGHT	DRIVE PITCH	CLIP CONFIG.
9001H	13.5" x 128" (34 cm x 325 cm)	1.25" (32 mm)	34 lb. (15.5 kg)	2.52" (64 mm)	Every 3 rd / closed windows	9158H	15" x 120" (38 cm x 305 cm)	1" (25 mm)	32 lb. (14.5 kg)	2.86" (73 mm)	Full ■
9006H	15" x 144" (38 cm x 366 cm)	1.25" (32 mm)	45 lb. (20.5 kg)	2.52" (64 mm)	Full	9209H	15" x 120" (38 cm x 305 cm)	1.25" (32 mm)	37 lb. (16.75 kg)	2.86" (73 mm)	Full
9040H	15" x 128" (38 cm x 325 cm)	1.25" (32 mm)	41 lb. (18.5 kg)	2.52" (64 mm)	Full	9210H	15" x 120" (38 cm x 305 cm)	1" (25 mm)	33 lb. (15 kg)	2.86" (73 mm)	Full
9146H	15" x 121" (38 cm x 307 cm)	1.25" (32 mm)	35 lb. (16 kg)	2.52" (64 mm)	Every 3 rd / open windows ■	9214H	15" x 121" (38 cm x 307 cm)	1.25" (32 mm)	41 lb. (18.5 kg)	2.52" (64 mm)	Full
9148H	15" x 120" (38 cm x 305 cm)	1" (25 mm)	32 lb. (14.5 kg)	2.86" (73 mm)	Full	9215H	15" x 128" (38 cm x 325 cm)	1.25" (32 mm)	43 lb. (19.5 kg)	2.52" (64 mm)	Full
9149H	15" x 120" (38 cm x 305 cm)	1.25" (32 mm)	35 lb. (16 kg)	2.86" (73 mm)	Full	9216H	15" x 136" (38 cm x 345 cm)	1.25" (32 mm)	45 lb. (20.5 kg)	2.52" (64 mm)	Full
9968H	15" x 121" (38 cm x 307 cm)	1.25" (32 mm)	40 lb. (18.25 kg)	2.52" (64 mm)	Full	9223H	15" x 137" (38 cm x 348 cm)	1.25" (32 mm)	42 lb. (19 kg)	2.86" (73 mm)	Full
9968H144	15" x 121" (38 cm x 307 cm)	1.25" (32 mm)	38 lb. (17.25 kg)	2.52" (64 mm)	Full ●	9224H	15" x 137" (38 cm x 348 cm)	1" (25 mm)	38 lb. (17.25 kg)	2.86" (73 mm)	Full
9969H	15" x 136" (38 cm x 345 cm)	1.25" (32 mm)	43 lb. (19.5 kg)	2.52" (64 mm)	Full	9237H	15" x 129" (38 cm x 328 cm)	1.25" (32 mm)	39 lb. (17.75 kg)	2.86" (73 mm)	Full
9007H	15" x 151" (38 cm x 383 cm)	1.25" (32 mm)	49 lb. (22.23 kg)	2.52" (64 mm)	Full	9325H	15" x 129" (38 cm x 328 cm)	1" (25 mm)	35 lb. (15.87 kg)	2.86" (73 mm)	Full



Model 9077H



Model 9190H

CAMSO

ICE Ripper XT

Handles and holds

The original factory pre-studded track is a proven performer. With a design that gives riders outstanding handling and stability, it's a true classic.

- Factory pre-studded for improved traction and control
- 1.25" lug height for improved traction and stability
- RipSaw-based attack angled lugs for excellent forward and lateral bite

CAMSO

ICE Attak XT

Nailed to the trail

A highly aggressive trail model design featuring hundreds of sharp-tip lug studs, giving riders traction and control they can count on.

- Factory pre-studded for improved traction and control
- Lug design delivers better traction than the ICE Ripper XT
- 1.22" lug height provides better handling and stability
- Optimized rubber compound for superior traction on groomed trail

MODEL	DIMENSIONS	LUG HEIGHT	WEIGHT	DRIVE PITCH	NB. STUDS	CLIP CONFIG.	MODEL	DIMENSIONS	LUG HEIGHT	WEIGHT	DRIVE PITCH	NB. STUDS	CLIP CONFIG.
9077H	15" x 121" (38 cm x 307 cm)	1.25" (32 mm)	39 lb. (17.75 kg)	2.52" (64 mm)	256	Full ▲ ■	9190H	15" x 120" (38 cm x 305 cm)	1.22" (31 mm)	37 lb. (16.75 kg)	2.86" (73 mm)	224	Full ▲ ■
9164H	15" x 120" (38 cm x 305 cm)	1.25" (32 mm)	36 lb. (16.25 kg)	2.86" (73 mm)	224	Full ▲ ■	9191H	15" x 137" (38 cm x 348 cm)	1.22" (31 mm)	42 lb. (19 kg)	2.86" (73 mm)	256	Full ▲ ■
							9192H	15" x 146" (38 cm x 371 cm)	1.22" (31 mm)	44 lb. (20 kg)	2.86" (73 mm)	272	Full ▲ ■
							9200H	15" x 121" (38 cm x 307 cm)	1.22" (31 mm)	40 lb. (18.25 kg)	2.52" (64 mm)	256	Full ▲ ■
							9201H	15" x 128" (38 cm x 325 cm)	1.22" (31 mm)	42 lb. (19 kg)	2.52" (64 mm)	272	Full ▲ ■
							9202H	15" x 136" (38 cm x 345 cm)	1.22" (31 mm)	45 lb. (20.5 kg)	2.52" (64 mm)	288	Full ▲ ■
							9203H	15" x 144" (38 cm x 365 cm)	1.22" (31 mm)	47 lb. (21.25 kg)	2.52" (64 mm)	304	Full ▲ ■
							9236H	15" x 129" (38 cm x 328 cm)	1.22" (31 mm)	39 lb. (17.75 kg)	2.86" (73 mm)	240	Full ▲ ■



CAMSO

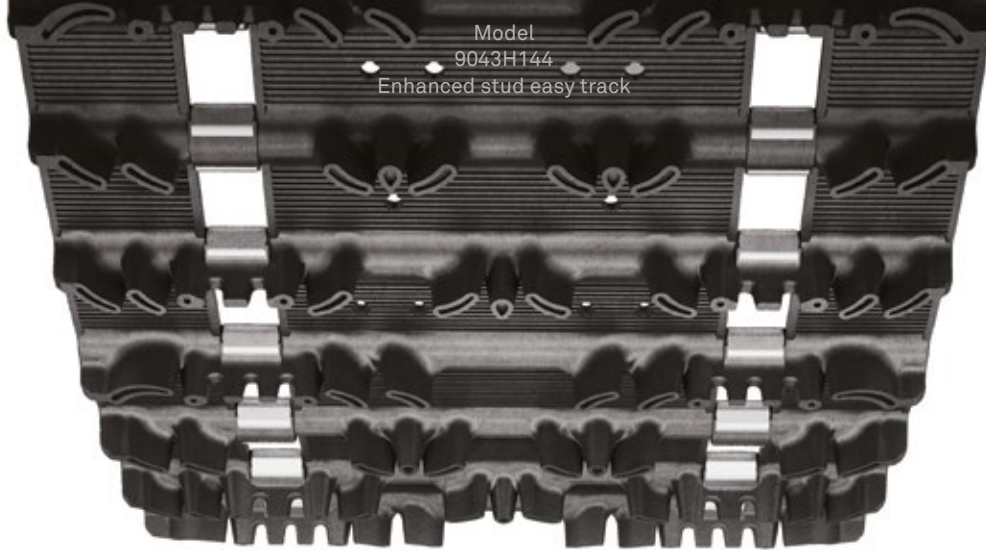
ICE Attak

Top handling and speed for trail cruising

Popular with trail cruisers, with tried-and-tested sharp-tip studs. An excellent choice for snowmobiles that cannot fit taller tracks, it's designed to deliver outstanding top speed and handling on hard-pack snow.

- Factory pre-studded with aggressive 31-point stud pattern
- HackSaw-based lug design for good top speed and handling on hard-pack snow
- 1.063" lug height for average trail use and efficiency
- 1.375" lug height for mixed on/off-trail use

MODEL	DIMENSIONS	LUG HEIGHT	WEIGHT	DRIVE PITCH	NB. STUDS	CLIP CONFIG.
9028H	15" x 121" (38 cm x 307 cm)	1.063" (27 mm)	38 lb. (17.25 kg)	2.52" (64 mm)	264	Full ▲ ■
9029H	15" x 136" (38 cm x 345 cm)	1.063" (27 mm)	43 lb. (19.5 kg)	2.52" (64 mm)	297	Full ▲ ■



CAMSO

HackSaw

Durability meets efficiency and speed

A proven performer in the 1" category. Attack angle lugs guarantee superior performance on hard-groomed snow trails.

- 1" lug height for low rolling resistance that improves fuel economy
- Crescent lug features recessed tips and cutting edges for forward and lateral bite on hard-pack
- Hard-wearing rigid lugs for mile after mile of dependable use
- Narrow lug base to reduce rolling resistance and maximize top speed

MODEL	DIMENSIONS	LUG HEIGHT	WEIGHT	DRIVE PITCH	CLIP CONFIG.
9009H	15" x 121" (38 cm x 307 cm)	1" (25 mm)	33 lb. (15 kg)	2.52" (64 mm)	Every 3 rd / open windows
9010H	15" x 136" (38 cm x 345 cm)	1" (25 mm)	40 lb. (18.25 kg)	2.52" (64 mm)	Full
9043H144	15" x 121" (38 cm x 307 cm)	1" (25 mm)	36 lb. (16.25 kg)	2.52" (64 mm)	Full ●
9110H ¹	14" x 128" (36 cm x 325 cm)	1" (25 mm)	34 lb. (15.5 kg)	2.52" (64 mm)	Full
9234H	15" x 128" (38 cm x 325 cm)	1" (25 mm)	35 lb. (16 kg)	2.52" (64 mm)	Every 3 rd / open windows

¹ Narrow track design



CROSS-COUNTRY

50/50 and backcountry riders

Boost your crossover or trail sled

50/50 riders rack up the trail miles, but give them half a chance and they're off the trail, playing in an open, untracked meadow or riding a ditch line.

Backcountry riders don't need any second invitations to head out into untravelled pristine powder and deep snow.

WHICH CROSS-COUNTRY TRACK IS RIGHT FOR YOU?

RIDING STYLE		LUG HEIGHT (in)								
		NEW Hurricane 175	BackCountry X2	Challenger Trail	BackCountry X	BackCountry	ICE Cobra 1.6	Cobra 1.6	Intense	RipSaw II 1.5
		1.75	2	1.75	1.75	1.75	1.6	1.6	1.5	1.5
50/50										
BACK-COUNTRY										

Model 9400C

NEW CAMSO

Hurricane 175

Dominate deep backcountry

Inspired by mountain track lug geometry, the Hurricane 175 is the perfect balance between deep snow technology and trail-gripping adrenaline. Its 1.75-inch cupped profile design will take you deeper into the backcountry and out again.

- Designed based on mountain tracks, it provides off-trail performance in deep snow while maintaining on-trail agility
- 1.75-inch tall lug profile design reduces vibration, applying more power to the ground both on and off trail
- Optimized column positioning for better track efficiency and enhanced traction in deep-powder snow while ensuring durability in all conditions

	MODEL	DIMENSIONS	LUG HEIGHT	WEIGHT	DRIVE PITCH	CLIP CONFIG.
NEW	9400C	15" x 120" (38 cm x 305 cm)	1.75" (44 mm)	35 lb. (16.3 kg)	2.86" (73 mm)	Full
NEW	9401C	15" x 129" (38 cm x 328 cm)	1.75" (44 mm)	37 lb. (17.4 kg)	2.86" (73 mm)	Full
NEW	9402C	15" x 137" (38 cm x 348 cm)	1.75" (44 mm)	40 lb. (18.6 kg)	2.86" (73 mm)	Full
NEW	9403C	15" x 146" (38 cm x 371 cm)	1.75" (44 mm)	42 lb. (19.7 kg)	2.86" (73 mm)	Full






CAMSO

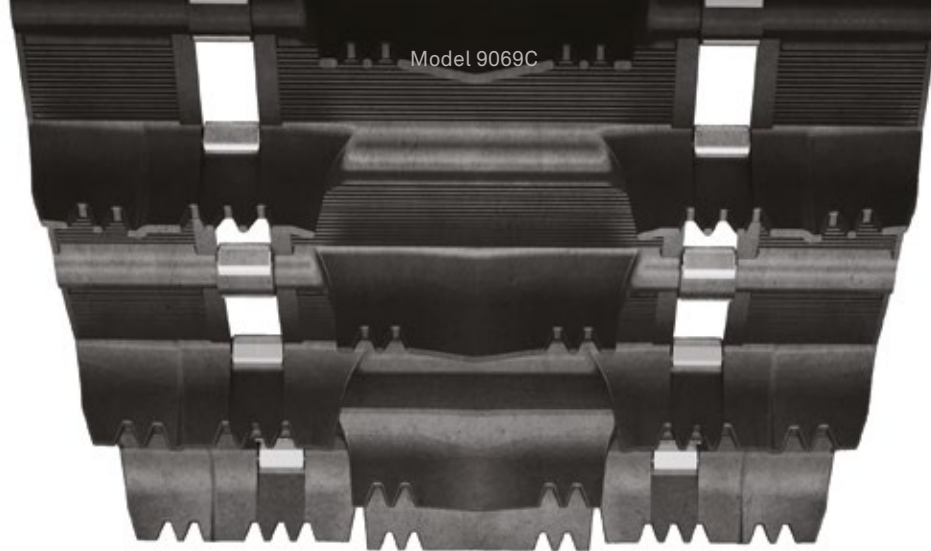
BackCountry X2

Explore deeper

The BackCountry, taken to another level. Our most popular on/off-trail track, now with a lug height of 2" that lets you explore deep into the backcountry.

- Arched lug design with staggered snocross-inspired pattern for excellent soft snow traction
- Rigid lug support columns and optimized rubber compound to deliver great on/off-trail performance
- 2.86" drive pitch

MODEL	DIMENSIONS	LUG HEIGHT	WEIGHT	DRIVE PITCH	CLIP CONFIG.
9256C	15" x 120" (38 cm x 305 cm)	2" (51 mm)	41 lb. (18.5 kg)	2.86" (73 mm)	Full 
9257C	15" x 129" (38 cm x 328 cm)	2" (51 mm)	43 lb. (19.5 kg)	2.86" (73 mm)	Full 
9258C	15" x 137" (38 cm x 348 cm)	2" (51 mm)	46 lb. (20.75 kg)	2.86" (73 mm)	Full 





CAMSO

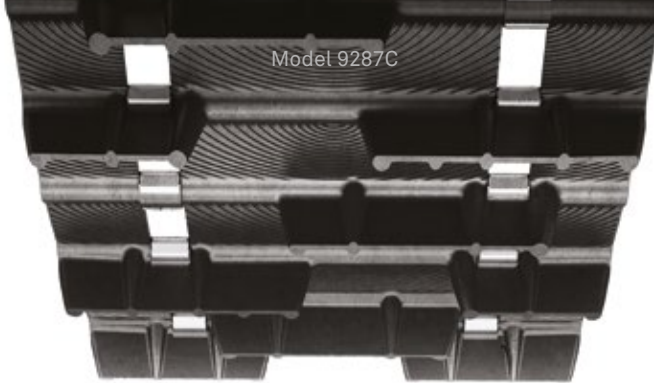
Challenger Trail

Lead the way

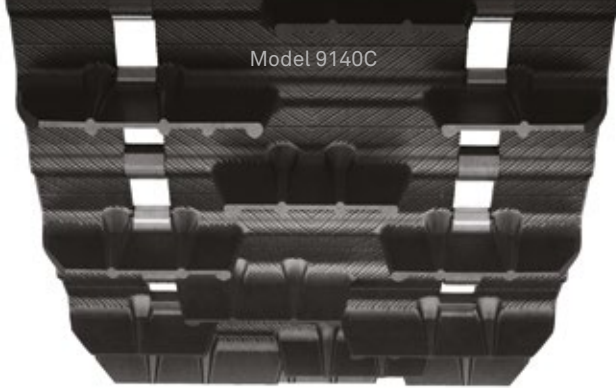
The go-to track for outstanding deep-snow performance since the mid-90s. As an all-around performer that's both versatile and durable, it delivers off-trail capability without sacrificing trail performance.

- Saw-tooth-tipped lugs provide excellent handling, acceleration, and braking on packed trails
- 16" width enhances flotation off-trail in soft snow

MODEL	DIMENSIONS	LUG HEIGHT	WEIGHT	DRIVE PITCH	CLIP CONFIG.
9070C	16" x 137" (41 cm x 348 cm)	1.75" (44 mm)	45 lb. (20.5 kg)	2.86" (73 mm)	Full 
9167C	16" x 146" (41 cm x 371 cm)	1.75" (44 mm)	51 lb. (23 kg)	2.86" (73 mm)	Full 
9933C	16" x 136" (41 cm x 345 cm)	1.75" (44 mm)	48 lb. (21.75 kg)	2.52" (64 mm)	Full



Model 9287C



Model 9140C

CAMSO

BackCountry X

Make your own path

Recognized as a frontrunner for on/off-trail riding, with a 1.75" lug height and increased drive pitch. Developed and tested in competitive snocross racing environments, it's designed with traction and durability in mind.

- Arched lug design with staggered snocross-inspired pattern for excellent soft snow traction
- 2.86" drive pitch models feature tapered lugs on outside edges for improved durability
- 3" drive pitch also available










CAMSO

BackCountry

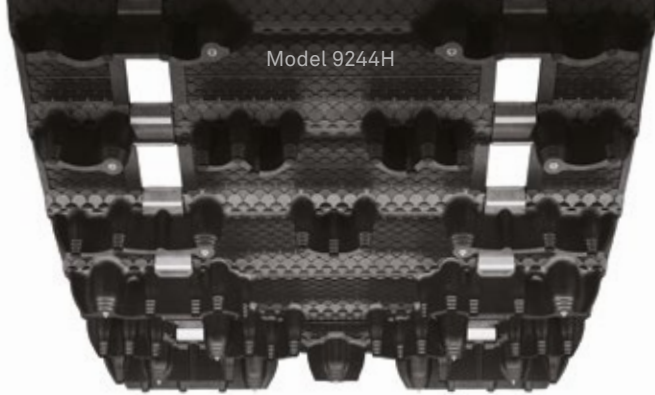
Make your own path

Recognized as a frontrunner for on/off-trail riding, with a 1.75" lug height and increased drive pitch. Developed and tested in competitive snocross racing environments, it's designed with traction and durability in mind.

- Arched lug design with staggered snocross-inspired pattern for excellent soft snow traction
- 2.52" drive pitch

MODEL	DIMENSIONS	LUG HEIGHT	WEIGHT	DRIVE PITCH	CLIP CONFIG.	MODEL	DIMENSIONS	LUG HEIGHT	WEIGHT	DRIVE PITCH	CLIP CONFIG.
9254C	15" x 141" (38 cm x 382 cm)	1.75" (44 mm)	43 lb. (19.5 kg)	3" (76 mm)	Full 	9140C	15" x 121" (38 cm x 307 cm)	1.75" (44 mm)	40 lb. (18.25 kg)	2.52" (64 mm)	Full 
9287C	15" x 120" (38 cm x 305 cm)	1.75" (44 mm)	39 lb. (17.5 kg)	2.86" (73 mm)	Full 	9141C	15" x 128" (38 cm x 325 cm)	1.75" (44 mm)	42 lb. (19 kg)	2.52" (64 mm)	Full 
9288C	15" x 129" (38 cm x 328 cm)	1.75" (44 mm)	42 lb. (19 kg)	2.86" (73 mm)	Full 	9142C	15" x 136" (38 cm x 345 cm)	1.75" (44 mm)	44 lb. (20 kg)	2.52" (64 mm)	Full 
9289C	15" x 137" (38 cm x 345 cm)	1.75" (44 mm)	43 lb. (19.5 kg)	2.86" (73 mm)	Full 	9143C	15" x 144" (38 cm x 366 cm)	1.75" (44 mm)	46 lb. (20.75 kg)	2.52" (64 mm)	Full 
9328C	15" x 153" (38 cm x 388 cm)	1.75" (44 mm)	46 lb. (20.75 kg)	3" (76 mm)	Full 						

Model 9244H



CAMSO

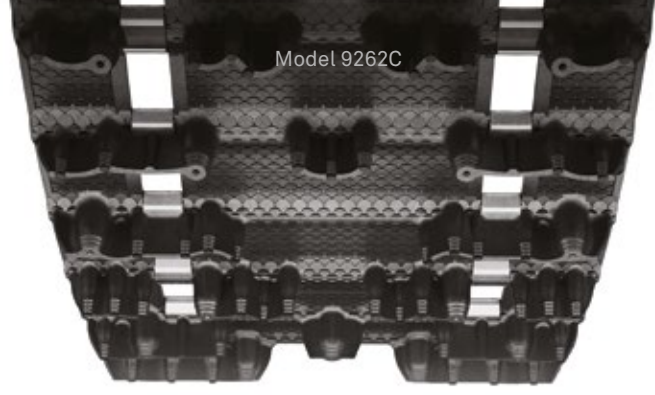
ICE Cobra 1.6

Hard grip in soft snow

The "Denis Courtemanche Special Edition," in honor of long-time recreational products director who has devoted 50 years to improving snowmobile track design. Factory pre-studded with 1.6" lugs for excellent all-round performance, especially on ungroomed trails.

- Cupped lugs for superior acceleration and braking in loose, soft snow conditions
- Flexible lug design for superior off-trail performance

Model 9262C



CAMSO

Cobra 1.6

Performance, on or off the trail

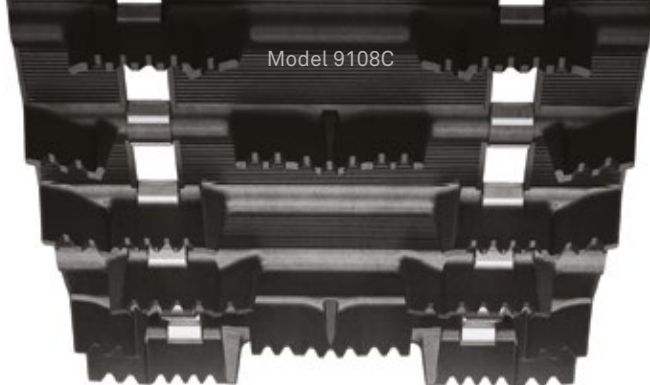
The Cobra design taken to another level. Excellent performance on the soft, loose snow of ungroomed trails, now available in a 1.6" lug height for even better traction and performance while on/off-trail.

- Cupped lugs for superior acceleration and braking in loose, soft snow conditions
- Flexible lug design for superior off-trail performance
- Designed for factory pre-studded, select lugs are more rigid for traction on hard-packed snow performance

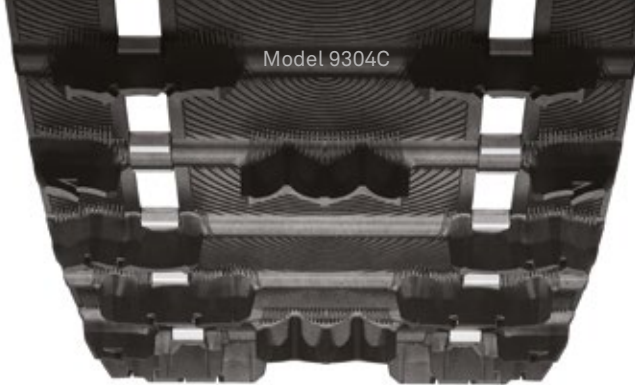
MODEL	DIMENSIONS	LUG HEIGHT	WEIGHT	DRIVE PITCH	NB. STUDS	CLIP CONFIG.	MODEL	DIMENSIONS	LUG HEIGHT	WEIGHT	DRIVE PITCH	CLIP CONFIG.
9244C	15" x 120" (38 cm x 305 cm)	1.6" (43 mm)	38 lb. (17.25 kg)	2.86" (73 mm)	91	Full ▲ ■	9262C	15" x 120" (38 cm x 305 cm)	1.6" (43 mm)	38 lb. (17.25 kg)	2.86" (73 mm)	Full ■
9245C	15" x 129" (38 cm x 328 cm)	1.6" (43 mm)	41 lb. (18.5 kg)	2.86" (73 mm)	97	Full ▲ ■	9264C	15" x 137" (38 cm x 348 cm)	1.6" (43 mm)	43 lb. (19.5 kg)	2.86" (73 mm)	Full ■
9246C	15" x 137" (38 cm x 348 cm)	1.6" (43 mm)	43 lb. (19.5 kg)	2.86" (73 mm)	104	Full ▲ ■	9282C	16" x 154" (41 cm x 391 cm)	1.6" (43 mm)	50 lb. (22.75 kg)	2.86" (73 mm)	Full ■
9247C	15" x 146" (38 cm x 371 cm)	1.6" (43 mm)	46 lb. (20.9 kg)	2.86" (73 mm)	110	Full ▲ ■	9291C	15" x 120" (38 cm x 305 cm)	1.6" (43 mm)	39 lb. (17.75 kg)	2.86" (73 mm)	Full
9249C	16" x 137" (41 cm x 348 cm)	1.6" (43 mm)	45 lb. (20.75 kg)	2.86" (73 mm)	104	Full ▲ ■	9292C	15" x 129" (38 cm x 328 cm)	1.6" (43 mm)	41 lb. (18.5 kg)	2.86" (73 mm)	Full
9250C	16" x 146" (41 cm x 371 cm)	1.6" (43 mm)	48 lb. (21.8 kg)	2.86" (73 mm)	110	Full ▲ ■	9316C	15" x 144" (38 cm x 366 cm)	1.6" (43 mm)	49.5 lb. (22.5 kg)	2.52" (64 mm)	Full
9272C	16" x 154" (41 cm x 391 cm)	1.6" (43 mm)	50 lb. (22.5 kg)	2.86" (73 mm)	117	Full ▲ ■						
9273C ¹	15" x 154" (38 cm x 391 cm)	1.6" (43 mm)	47 lb. (21.25 kg)	2.86" (73 mm)	117	Full ▲ ■						
9312C	15" x 121" (38 cm x 307 cm)	1.6" (43 mm)	42 lb. (19.1 kg)	2.52" (64 mm)	104	Full ▲						
9313C	15" x 128" (38 cm x 325 cm)	1.6" (43 mm)	44.5 lb. (20.2 kg)	2.52" (64 mm)	110	Full ▲						
9314C	15" x 136" (38 cm x 345 cm)	1.6" (43 mm)	47 lb. (21.3 kg)	2.52" (64 mm)	117	Full ▲						
9315C	15" x 144" (38 cm x 366 cm)	1.6" (43 mm)	50 lb. (22.7 kg)	2.52" (64 mm)	123	Full ▲						

¹ These track models feature center hole for third driver.

▲ Embedded sharp tip lug studs ■ Single-ply construction ● Enhanced stud easy tracks



Model 9108C



Model 9304C

CAMSO

Intense

Purely driven by snow

Featuring a 1.5" lug height for on/off-trail riders, this long-time favorite has a proven record of performance and durability. Excellent performer in all types of snow conditions.

- Saw-tooth-tipped lugs provide excellent handling, acceleration, and braking on packed trails
- V-shaped and full lugs for excellent traction in soft, loose snow

CAMSO

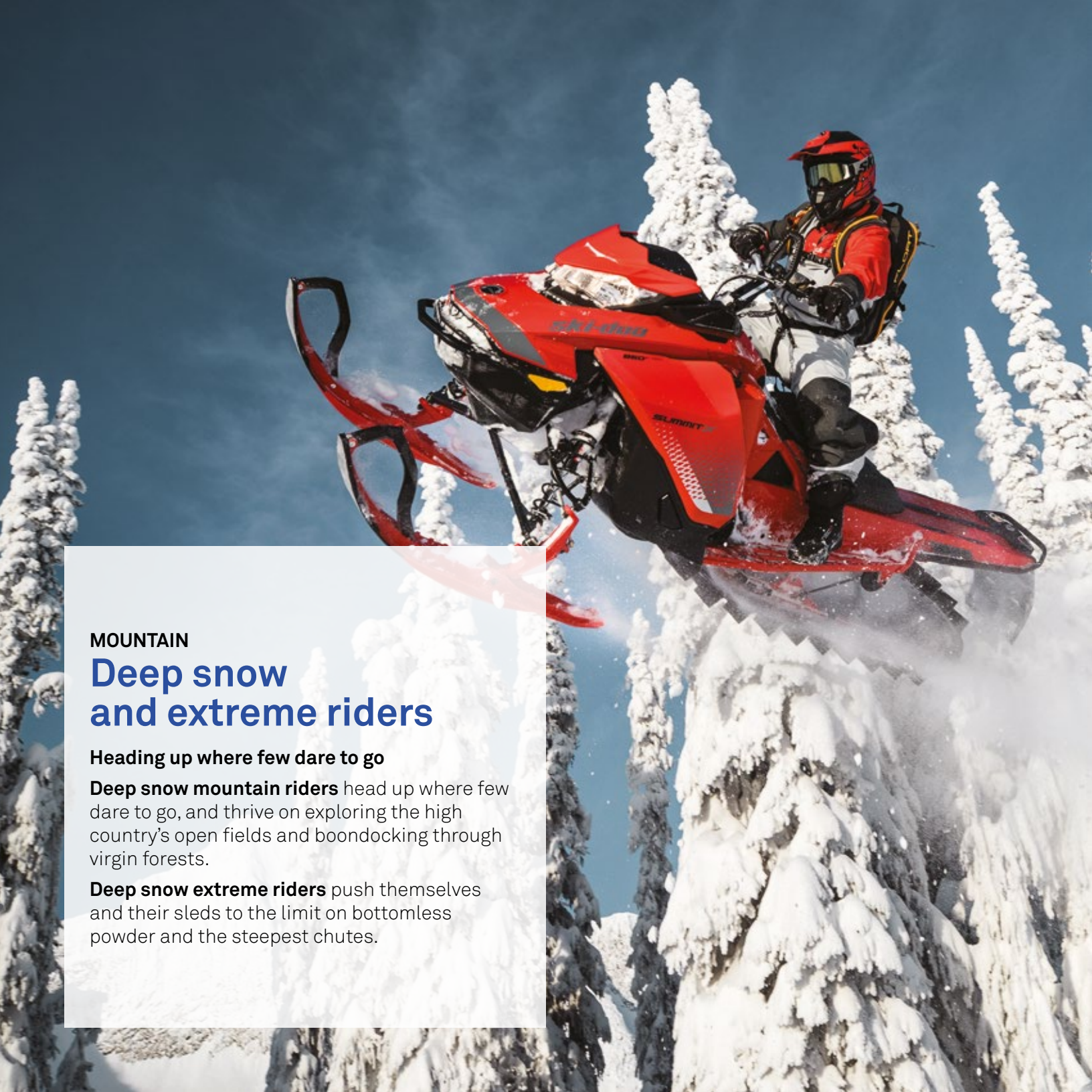
RipSaw II 1.5

All-around on- and off-trail performer

The RipSaw II, known for its versatility in all snow types, is taken to another level. Now boasting a 1.5-inch lug height, it's the track for the most demanding 50/50 rider.

- Sharp angled lugs provide excellent bite on hard-pack snow
- Cupped center and full outer lugs provide traction on loose, less compacted snow
- Tapered outside lug edges offer less side bite when cornering

MODEL	DIMENSIONS	LUG HEIGHT	WEIGHT	DRIVE PITCH	CLIP CONFIG.	MODEL	DIMENSIONS	LUG HEIGHT	WEIGHT	DRIVE PITCH	CLIP CONFIG.
9108C	15" x 136" (38 cm x 345 cm)	1.5" (38 mm)	41 lb. (18.5 kg)	2.52" (64 mm)	Full	9304C	15" x 120" (38 cm x 305 cm)	1.5" (38 mm)	37 lb. (16.8 kg)	2.86" (73 mm)	Full
9930C	15" x 121" (38 cm x 307 cm)	1.5" (38 mm)	39 lb. (17.75 kg)	2.52" (64 mm)	Full	9305C	15" x 129" (38 cm x 328 cm)	1.5" (38 mm)	39.5 lb. (17.9 kg)	2.86" (73 mm)	Full
						9306C	15" x 137" (38 cm x 348 cm)	1.5" (38 mm)	42 lb. (19.1 kg)	2.86" (73 mm)	Full



MOUNTAIN

Deep snow and extreme riders

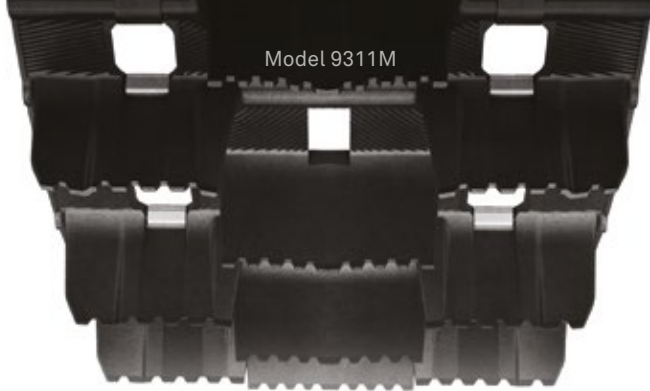
Heading up where few dare to go

Deep snow mountain riders head up where few dare to go, and thrive on exploring the high country's open fields and boondocking through virgin forests.

Deep snow extreme riders push themselves and their sleds to the limit on bottomless powder and the steepest chutes.

WHICH MOUNTAIN TRACK IS RIGHT FOR YOU?

		LUG HEIGHT (in)								
		Challenger X3.2	Challenger X3	Conquer 280	Conquer 260	Challenger Extreme (saw tooth)	Challenger Extreme (Full)	Peak 2.5	Challenger	Challenger
		3.2	3	2.8	2.6	2.5	2.5	2.5	2.313	2
RIDING STYLE	DEEP-SNOW									
	DEEP-SNOW EXTREME									



Model 9311M



Model 9219M

CAMSO

Challenger X3.2

Tallest lugs around

Built on the performance of the Challenger X3, the X3.2 features the tallest lugs on the market. With notched lug tips for improved performance, it's one of the most versatile mountain tracks on the market.

- Saw-tooth lug design for improved traction and control on packed snow
- 3" drive pitch and advanced molding technology
- Lug geometry and support columns allow lug cup and flex action for unmatched flotation

CAMSO

Challenger X3

Move through mountains

Some of the tallest lugs on the market. With 3" lugs, this deep snow technical track provides an efficient and light ride for mountain riders craving performance in extreme powder and while boondocking through trees.

- Single-ply construction, 3" drive pitch and advanced molding technology
- Lug geometry and support columns allow lug cup and flex action for unmatched flotation

MODEL	DIMENSIONS	LUG HEIGHT	WEIGHT	DRIVE PITCH	CLIP CONFIG.	MODEL	DIMENSIONS	LUG HEIGHT	WEIGHT	DRIVE PITCH	CLIP CONFIG.
9311M	15" x 174" (38 cm x 442 cm)	3.2" (81 mm)	59 lb. (26.8 kg)	3" (76 mm)	Every 2 nd / open windows	9219M	16" x 162" (41 cm x 412 cm)	3" (76 mm)	61 lb. (27.75 kg)	3" (76 mm)	Full
9319M	15" x 162" (38 cm x 412 cm)	3.2" (81 mm)	54 lb. (24.5 kg)	3" (76 mm)	Every 2 nd / open windows	9220M	15" x 162" (38 cm x 412 cm)	3" (76 mm)	59 lb. (26.75 kg)	3" (76 mm)	Full
9320M	15" x 156" (38 cm x 396 cm)	3.2" (81 mm)	52 lb. (23.6 kg)	3" (76 mm)	Every 2 nd / open windows	9220MSE ¹	15" x 162" (38 cm x 412 cm)	3" (76 mm)	58 lb. (26.25 kg)	3" (76 mm)	Full
9321M	15" x 153" (38 cm x 389 cm)	3.2" (81 mm)	51 lb. (23.2 kg)	3" (76 mm)	Every 2 nd / open windows	9271M	15" x 174" (38 cm x 442 cm)	3" (76 mm)	64 lb. (29 kg)	3" (76 mm)	Full
						9309M	15" x 156" (38 cm x 396 cm)	3" (76 mm)	57 lb. (25.75 kg)	3" (76 mm)	Full

¹ These track models feature center hole for third driver.



NEW CAMSO

Conquer 260

Agility in deep snow

Designed with a softer rubber compound for better deep-snow performance, the Camso Conquer 260's 2.6-inch lug design powers through the deepest mountain snow with ease. This lightweight track increases your machine's available horsepower, requiring less throttle input in turns and on side hills.

- 2.6" alternating single-angled lugs push performance in all snow riding conditions
- Lightweight model increases available HP thanks to less rotating mass
- Lug design requires 20% less rider input on turns and 25% less throttle to hold on side hills

CAMSO

Conquer 280

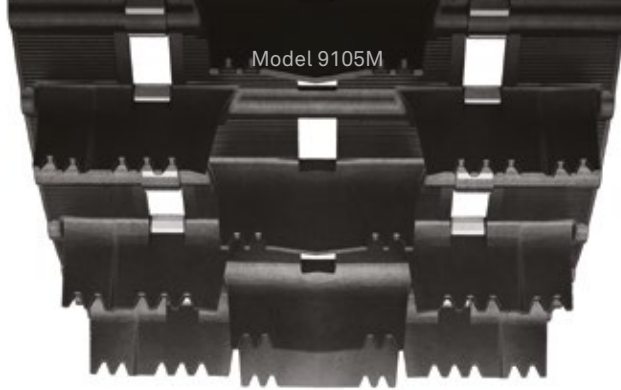
Above and beyond the deep stuff

Made to advance the mountain journey. The Conquer is the lightest mountain design track providing the ultimate in flotation, traction and performance. Its next generation lug geometry reaches new levels of balance in deep snow.

- Lightweight model increases available HP thanks to less rotating mass
- Lug design requires 20% less rider input on turns and 25% less throttle to hold on side hills
- 2.8" alternating single-angled lugs push performance in all-season riding conditions

	MODEL	DIMENSIONS	LUG HEIGHT	WEIGHT	DRIVE PITCH	CLIP CONFIG.
NEW	9392M	15" x 154" (38 cm x 391 cm)	2.6" (66 mm)	40 lb. (18.25 kg)	3.5" (89 mm)	Every 2 nd / open windows
NEW	9393M	15" x 165" (38 cm x 419 cm)	2.6" (66 mm)	43 lb. (19.5 kg)	3.5" (89 mm)	Every 2 nd / open windows

	MODEL	DIMENSIONS	LUG HEIGHT	WEIGHT	DRIVE PITCH	CLIP CONFIG.
	9334M	15" x 174" (38 cm x 442 cm)	2.8" (71 mm)	49 lb. (22.25 kg)	3" (76 mm)	Every 2 nd / open windows
	9335M	15" x 162" (38 cm x 411 cm)	2.8" (71 mm)	46 lb. (20.75 kg)	3" (76 mm)	Every 2 nd / open windows
	9336M	15" x 156" (38 cm x 396 cm)	2.8" (71 mm)	44 lb. (20 kg)	3" (76 mm)	Every 2 nd / open windows
	9337M	15" x 153" (38 cm x 389 cm)	2.8" (71 mm)	43 lb. (19.5 kg)	3" (76 mm)	Every 2 nd / open windows
	9340M	15" x 165" (38 cm x 419 cm)	2.8" (71 mm)	45 lb. (20.5 kg)	3.5" (89 mm)	Every 2 nd / open windows
	9341M	15" x 154" (38 cm x 391 cm)	2.8" (71 mm)	42 lb. (19 kg)	3.5" (89 mm)	Every 2 nd / open windows
	9360M	15" x 175" (38 cm x 444 cm)	2.86" (73 mm)	50 lb. (22.75 kg)	3.5" (89 mm)	Every 2 nd / open windows



CAMSO

Challenger Extreme

Challenge the mountain in **all snow types**

Stems from the same design as the classic Challenger but adds even higher saw-tooth lugs that, while versatile, make boondocking bottomless powder and climbing the steepest chutes seem easy.

- Rigid proven design for all-around performance and durability
- Saw-tooth lug design feature for grip on trail and wind-blown snow
- Available in a full range of lengths up to 174" to fit all popular snowmobiles



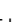






CAMSO

Challenger Extreme

Challenge the mountain in **powder snow**

Stems from the same design as the classic Challenger but with full-cupped lugs that are especially efficient in powder snow and make boondocking in bottomless powder seem easy.

- Full-cupped and deep V lug design for soft powder snow flotation and traction
- 3" drive pitch available

Saw-tooth lug design for versatility in all snow types						Full cupped lug design for powder snow types					
MODEL	DIMENSIONS	LUG HEIGHT	WEIGHT	DRIVE PITCH	CLIP CONFIG.	MODEL	DIMENSIONS	LUG HEIGHT	WEIGHT	DRIVE PITCH	CLIP CONFIG.
9035M	15" x 174" (38 cm x 442 cm)	2.5" (64 mm)	63 lb. (28.5 kg)	3" (76 mm)	Full	9174M	15" x 153" (38 cm x 389 cm)	2.5" (64 mm)	57 lb. (25.75 kg)	3" (76 mm)	Full 
9036M	16" x 174" (41 cm x 442 cm)	2.5" (64 mm)	69 lb. (31.25 kg)	3" (76 mm)	Full	9175M	15" x 162" (38 cm x 412 cm)	2.5" (64 mm)	55 lb. (25 kg)	3" (76 mm)	Full 
9102M	16" x 154" (41 cm x 391 cm)	2.5" (64 mm)	59 lb. (26.75 kg)	2.86" (73 mm)	Full 	9176M	16" x 162" (41 cm x 412 cm)	2.5" (64 mm)	57 lb. (25.75 kg)	3" (76 mm)	Full 
9104M ¹	15" x 154" (38 cm x 391 cm)	2.5" (64 mm)	57 lb. (25.75 kg)	2.86" (73 mm)	Full 	9329M	15" x 141" (38 cm x 382 cm)	2.5" (64 mm)	47 lb. (21.3 kg)	3" (76 mm)	Full 
9105M ¹	15" x 163" (38 cm x 414 cm)	2.5" (64 mm)	59 lb. (26 kg)	2.86" (73 mm)	Full 						
9115M	16" x 174" (41 cm x 442 cm)	3" (76 mm)	72 lb. (32.75 kg)	3" (76 mm)	Full						
9144M	16" x 146" (41 cm x 371 cm)	2.5" (64 mm)	56 lb. (25.5 kg)	2.86" (73 mm)	Full 						
9145M ¹	15" x 146" (38 cm x 371 cm)	2.5" (64 mm)	52 lb. (23.5 kg)	2.86" (73 mm)	Full 						

¹ These track models feature center hole for third driver.



Model 9232M



Model 9064M

CAMSO

Peak 2.5

Traction for a variety of applications

Performs across a wide variety of snow conditions with 2.5" angular lugs. Funnels snow under your snowmobile for extra traction and outstanding flotation.

- Angular lugs bite big and funnel snow under snowmobile for outstanding flotation
- Available with soft lugs for powder snow and hard lugs for heavy/wet snow
- Outer lug bars deliver better lateral control for improved handling

CAMSO

Challenger

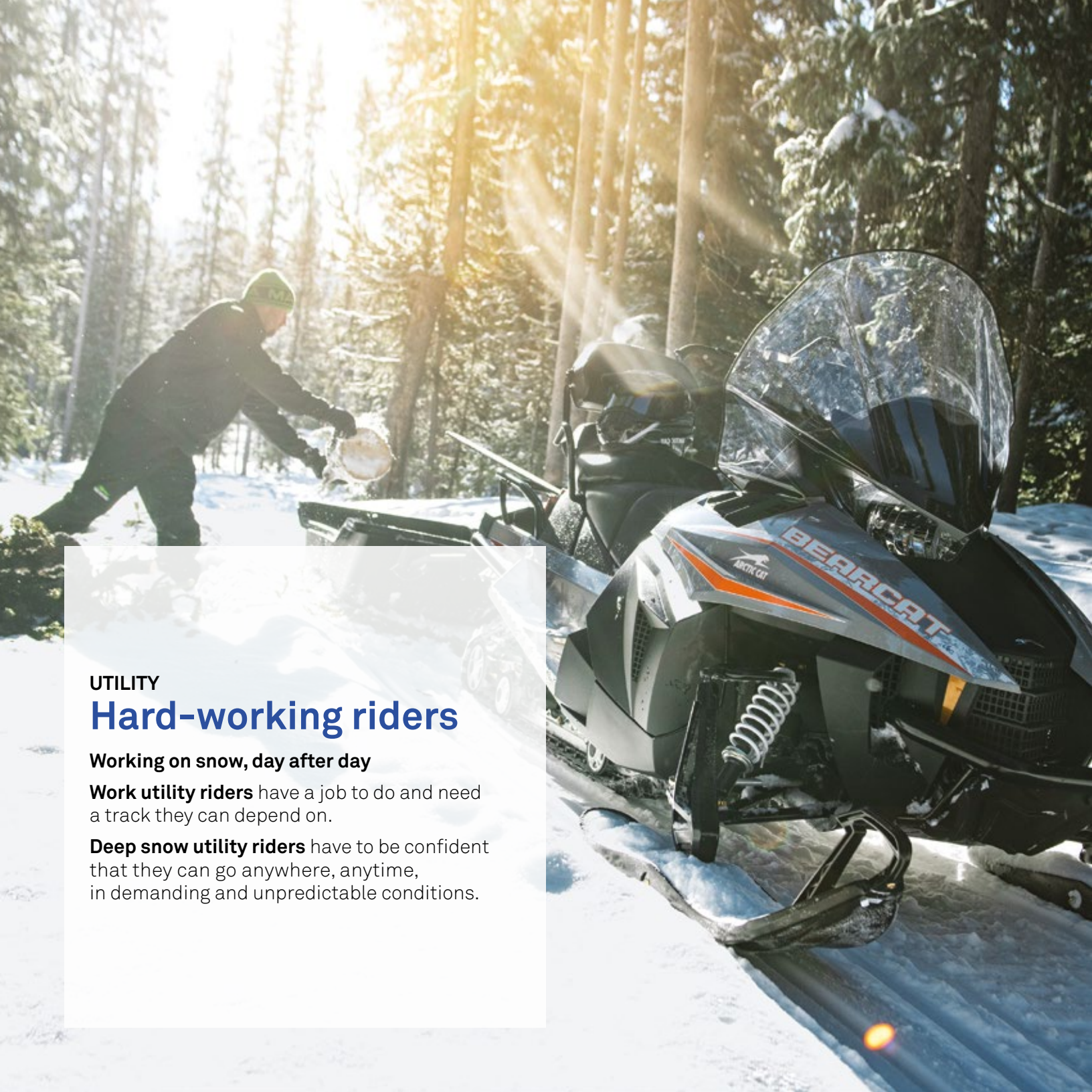
Ride through deep snow

A standard for deep lug tracks. Deep snow riding has never been so versatile and reliable. Delivers outstanding all-around performance in a wide range of mountain-riding conditions.

- 2" and 2.313" lugs heights for traction in deep snow
- Saw-tooth design provides versatility with grip and control on hard snow
- 15" and 16" track width available

MODEL	DIMENSIONS	LUG HEIGHT	WEIGHT	DRIVE PITCH	CLIP CONFIG.	MODEL	DIMENSIONS	LUG HEIGHT	WEIGHT	DRIVE PITCH	CLIP CONFIG.
9179M	16" x 146" (41 cm x 371 cm)	2.5" (64 mm)	56 lb. (25.5 kg)	2.86" (73 mm)	Full ■	9064M	16" x 146" (41 cm x 371 cm)	2.313" (59 mm)	53 lb. (24 kg)	2.86" (73 mm)	Full ■
9182M ¹	15" x 146" (38 cm x 371 cm)	2.5" (64 mm)	55 lb. (25 kg)	2.86" (73 mm)	Full ■	9065M	16" x 154" (41 cm x 391 cm)	2.313" (59 mm)	55 lb. (25 kg)	2.86" (73 mm)	Full ■
9230M ¹	15" x 154" (38 cm x 392 cm)	2.5" (64 mm)	56 lb. (25.5 kg)	2.86" (73 mm)	Full ■	9088M	15" x 154" (38 cm x 391 cm)	2" (51 mm)	55 lb. (25 kg)	2.86" (73 mm)	Full ■
9231M ¹	15" x 163" (38 cm x 414 cm)	2.5" (64 mm)	59 lb. (26.75 kg)	2.86" (73 mm)	Full ■	9186M	16" x 137" (41 cm x 348 cm)	2" (51 mm)	49 lb. (22.25 kg)	2.86" (73 mm)	Full ■
9232M	16" x 154" (41 cm x 392 cm)	2.5" (64 mm)	60 lb. (27.25 kg)	2.86" (73 mm)	Full ■	9187M	16" x 146" (41 cm x 371 cm)	2" (51 mm)	51 lb. (23 kg)	2.86" (73 mm)	Full ■
9233M	16" x 163" (41 cm x 414 cm)	2.5" (64 mm)	64 lb. (29 kg)	2.86" (73 mm)	Full ■	9188M	16" x 154" (41 cm x 391 cm)	2" (51 mm)	53 lb. (24 kg)	2.86" (73 mm)	Full ■
						9204M	16" x 137" (41 cm x 348 cm)	2.313" (59 mm)	51 lb. (23 kg)	2.86" (73 mm)	Full ■
						9797M	15" x 136" (38 cm x 345 cm)	2" (51 mm)	51 lb. (23 kg)	2.52" (64 mm)	Full ■
						9798M	15" x 121" (38 cm x 307 cm)	2" (51 mm)	45 lb. (20.5 kg)	2.52" (64 mm)	Full ■
						9875M	15" x 144" (38 cm x 366 cm)	2" (51 mm)	53 lb. (24 kg)	2.52" (64 mm)	Full ■
						9876M	15" x 151" (38 cm x 383 cm)	2" (51 mm)	55 lb. (25 kg)	2.52" (64 mm)	Full ■
						9884M	15" x 159" (38 cm x 404 cm)	2" (51 mm)	57 lb. (25.75 kg)	2.52" (64 mm)	Full ■

¹ These track models feature center hole for third driver.



UTILITY

Hard-working riders

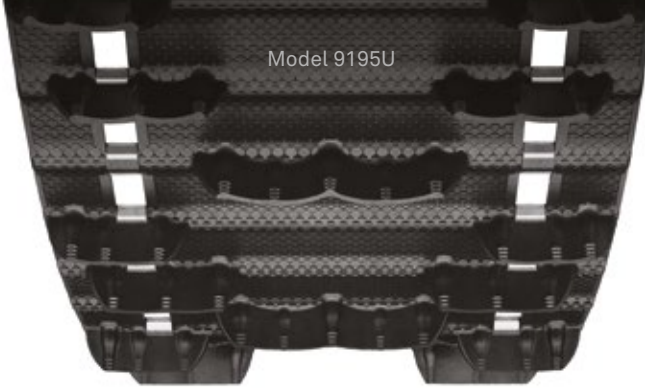
Working on snow, day after day

Work utility riders have a job to do and need a track they can depend on.

Deep snow utility riders have to be confident that they can go anywhere, anytime, in demanding and unpredictable conditions.

WHICH UTILITY TRACK IS RIGHT FOR YOU?

		LUG HEIGHT (in)						
		Cobra WT	Cobra SWT	Cobra SWT	Cobra WT	RipSaw Full	RipSaw Full	ICE Wide Track
		1.8	1.75	1.5	1.5	1.375	1.25	1.25
RIDING STYLE	DEEP SNOW UTILITY							
	WORK UTILITY							



Model 9195U



Model 9260U

CAMSO

Cobra WT

High-performance belting to handle heavier loads

Wide-track design for performance with traction to spare in deep, soft or loose snow. Ideal for utility snowmobiles used off-trail with high-performance belting to handle heavier loads without track stretching.

CAMSO

Cobra SWT

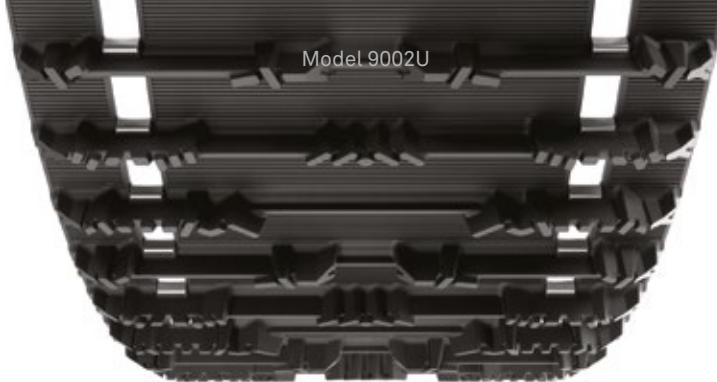
Durable, high-performance design for wide sleds

The same durable, high-performance design as the Cobra WT, with even wider track for 24" wide applications. For utility users with wide sleds who seek quality.

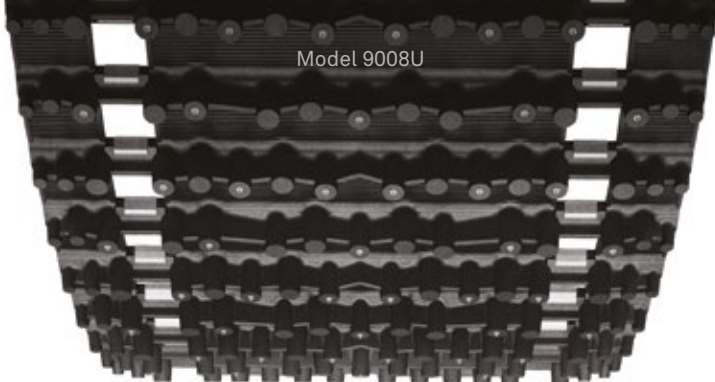
- Extra tall 1.5" and 1.75" lugs provide optimal traction (1.8" lugs for Cobra WT)
- Cupped lug design ideal in soft, loose snow and for off-trail backcountry exploration
- Lightweight for greater efficiency and improved fuel economy

MODEL	DIMENSIONS	LUG HEIGHT	WEIGHT	DRIVE PITCH	CLIP CONFIG.	MODEL	DIMENSIONS	LUG HEIGHT	WEIGHT	DRIVE PITCH	CLIP CONFIG.
9195U	20" x 154" (50 cm x 392 cm)	1.8" (46 mm)	65 lb. (29.5 kg)	2.86" (73 mm)	Full ■	9260U	24" x 156" (60 cm x 396 cm)	1.75" (44 mm)	82 lb. (37.25 kg)	2.52" (64 mm)	Full ■
9196U	20" x 154" (50 cm x 392 cm)	1.5" (38 mm)	62 lb. (28.25 kg)	2.86" (73 mm)	Full ■	9261U	24" x 156" (60 cm x 396 cm)	1.5" (38 mm)	80 lb. (36.25 kg)	2.52" (64 mm)	Full ■
9322U ¹	20" x 154" (50 cm x 392 cm)	1.5" (38 mm)	62 lb. (28.25 kg)	2.86" (73 mm)	Full ■						

¹ Features four rows drive lugs for improved fitment on select snowmobiles.



Model 9002U



Model 9008U

CAMSO

RipSaw Full

Mile after mile of dependable use

A modified version of the tried-and-tested RipSaw design. Ideal for utility use, it features a full lug design and its 1.25" lug height is a popular upgrade for utility vehicles fitted with 1" lug tracks.

- 1.25" and 1.375" lug heights
- Full block lugs provide traction in soft, loose snow
- Angled lugs for aggressive forward and lateral bite on hard-packed snow


CAMSO

ICE WideTrack

Heavy-duty utility traction

Utility sleds need unbeatable flotation and superb reliability to handle the toughest jobs. Featuring extra lateral stability and traction, this track is the only model in the category with a factory pre-studded design for utility snowmobiles using a 20" wide track.

- Finger lug design for superior traction on hard-pack snow
- 1.25" lug height

MODEL	DIMENSIONS	LUG HEIGHT	WEIGHT	DRIVE PITCH	CLIP CONFIG.	MODEL	DIMENSIONS	LUG HEIGHT	WEIGHT	DRIVE PITCH	NB. STUDS	CLIP CONFIG.
9002U	20" x 156" (50 cm x 396 cm)	1.25" (32 mm)	66 lb. (30 kg)	2.52" (64 mm)	Full	9008U	20" x 156" (50 cm x 396 cm)	1.25" (32 mm)	71 lb. (32.25 kg)	2.52" (64 mm)	341	Full
9089U	20" x 154" (50 cm x 391 cm)	1.375" (35 mm)	65 lb. (29.5 kg)	2.86" (73 mm)	Full 							
9151U ¹	20" x 156" (50 cm x 396 cm)	1.25" (32 mm)	66 lb. (30 kg)	2.52" (64 mm)	Full							

¹ Features eight rows of internal drive lugs for improved track drive.

A dynamic action shot of two snowmobilers racing on a snowy track. The rider in the foreground is on a red and black snowmobile, wearing a black and orange suit and a bright orange helmet with goggles. The second rider is slightly behind and to the left, on a black and yellow snowmobile, wearing a black and red suit and a blue and red helmet. The background is a blurred crowd of spectators behind a blue safety fence, with snow being kicked up by the machines.

RACING

Riding to win

The speed you need to compete with the best

If you're an **asphalt, ice and grass drag, snocross, ice oval or snow and hill drag racer**, you need tracks that are optimized for racing on competitive courses. When the crowd roars, you know that adrenaline isn't enough to get you across the finish line first.

Model 9293R/9294R/
9332R/9333R

CAMSO

Sno X

A whole lot of holeshot

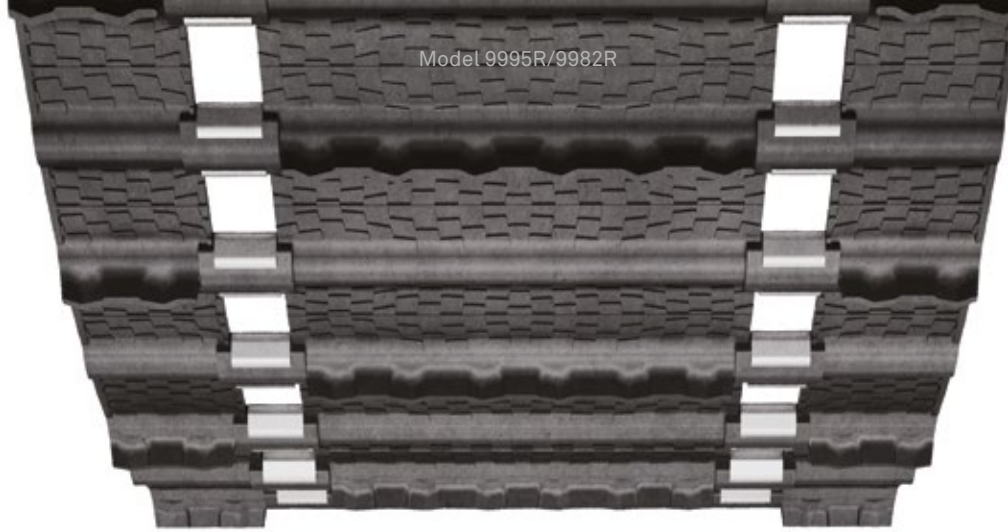
High-performance designs, custom-tailored for snocross competition and tested and proven by professional race teams. Firm lugs and specialty rubber compounds provide the best holeshots, keeping you ahead of the pack.

- 1.75" lugs, the choice of professional racers
- Calculated lug stiffness for best holeshot
- ISR approved for use in mod class

MODEL	DIMENSIONS	LUG HEIGHT	WEIGHT	DRIVE PITCH	CLIP CONFIG.
9067R ¹	15" x 121" (38 cm x 307 cm)	1.75" (44 mm)	41 lb. (18.5 kg)	2.52" (64 mm)	Full
9205R ¹	15" x 136" (38 cm x 345 cm)	1.75" (44 mm)	46 lb. (20.75 kg)	2.52" (64 mm)	Full
9206R ¹	15" x 144" (38 cm x 366 cm)	1.75" (44 mm)	48 lb. (21.75 kg)	2.52" (64 mm)	Full
9293R	15" x 120" (38 cm x 305 cm)	1.75" (44 mm)	37 lb. (16.75 kg)	2.86" (73 mm)	Full
9294R	15" x 129" (38 cm x 326 cm)	1.75" (44 mm)	40 lb. (18.25 kg)	2.86" (73 mm)	Full
9332R	15" x 137" (38 cm x 348 cm)	1.75" (44 mm)	44 lb. (20 kg)	2.86" (73 mm)	Full
9333R	15" x 146" (38 cm x 371 cm)	1.75" (44 mm)	45 lb. (20.5 kg)	2.86" (73 mm)	Full
NEW 9382R	10" x 93" (25.4 cm x 236 cm)	0.5" (13 mm)	16 lb. (7.5 kg)	2.59" (66 mm)	Full

¹ Backcountry design see p. 19

Model 9995R/9982R



CAMSO

Ice Oval Series

The oval racing champion

High-performance design engineered for the extreme cornering and acceleration of oval racing. Multiple-time oval winner Jacques Villeneuve's track of choice.

- Lightest in class for best efficiency and power transfer
- “Soft” outer rubber compound maximizes traction on ice
- Multiple lug heights for all snow and ice conditions

MODEL	DIMENSIONS	LUG HEIGHT	WEIGHT	DRIVE PITCH	CLIP CONFIG.
9194R ¹	14" x 128" (36 cm x 325 cm)	1" (25 mm)	32 lb. (14.5 kg)	2.52" (64 mm)	Full
9239R ¹	14" x 121" (36 cm x 307 cm)	1" (25 mm)	32 lb. (14.5 kg)	2.52" (64 mm)	Full
9812R ²	15" x 121" (38 cm x 307 cm)	0.525" (13 mm)	33 lb. (15 kg)	2.52" (64 mm)	Full
9982R	13.5" x 116" (34 cm x 295 cm)	0.725" (18 mm)	28 lb. (12.75 kg)	2.52" (64 mm)	Full
9995R	15" x 116" (38 cm x 295 cm)	0.725" (18 mm)	31 lb. (14 kg)	2.52" (64 mm)	Full
9997R ²	15" x 121" (38 cm x 307 cm)	0.725" (18 mm)	36 lb. (16.25 kg)	2.52" (64 mm)	Full

¹ HackSaw design see p. 15

² See website for specific design

Model 9902R

Model 9895R

CAMSO

Ice and Grass Drag

Ahead of the pack

Designed specifically for the intense acceleration of drag racing, where the first seconds of the race make the difference between winning and losing.

- Low-resistance 0.525" lugs require less fuel for optimal straight-line acceleration
- 13.5" width available for lightweight and maximum top speed
- Multiple lengths for a wide variety of race chassis

CAMSO

Asphalt Drag

Made for asphalt drag competitions

Engineered and built for the unique performance requirements of asphalt drag competitions, where traction and super-fast acceleration are the name of the game.

- Lightweight 10.625" width for maximum top speed
- Soft outer rubber provides traction on paved surfaces
- Multiple lengths for a wide variety of race chassis

MODEL	DIMENSIONS	LUG HEIGHT	WEIGHT	DRIVE PITCH	CLIP CONFIG.	MODEL	DIMENSIONS	LUG HEIGHT	WEIGHT	DRIVE PITCH	CLIP CONFIG.
9084R	13.5" x 144" (34 cm x 366 cm)	0.525" (13 mm)	35 lb. (15.75 kg)	2.52" (64 mm)	Full	9895R	10.625" x 121" (27 cm x 307 cm)	0.625" (16 mm)	33 lb. (15 kg)	2.52" (64 mm)	No windows / clips
9359R	14" x 144" (36 cm x 366 cm)	1" (25 mm)	38 lb. (17.25 kg)	2.52" (64 mm)	Full	9896R	10.625" x 128" (27 cm x 325 cm)	0.625" (16 mm)	35 lb. (15.75 kg)	2.52" (64 mm)	No windows / clips
9811R	15" x 121" (38 cm x 307 cm)	0.525" (13 mm)	33 lb. (15 kg)	2.52" (64 mm)	Full	9897R	10.625" x 136" (27 cm x 345 cm)	0.625" (16 mm)	37 lb. (16.75 kg)	2.52" (64 mm)	No windows / clips
9902R	13.5" x 128" (34 cm x 325 cm)	0.525" (13 mm)	33 lb. (15 kg)	2.52" (64 mm)	Full						
9929R	13.5" x 136" (34 cm x 345 cm)	0.525" (13 mm)	31 lb. (14 kg)	2.52" (64 mm)	No windows / clips						
9976R	13.5" x 144" (34 cm x 366 cm)	0.525" (13 mm)	33 lb. (15 kg)	2.52" (64 mm)	No windows / clips						

THE 4 KEYS TO TRACK SELECTION

Length

Is the inside circumference of the track and is calculated as the drive pitch multiplied by the number of track segments. It must be correct to the nearest inch for proper fit without additional modifications to the skid frame.*

Width

Is the measurement across the track and is governed by the width of the tunnel.

- A slightly narrower track is permissible, like a 15" track in place of a 16" track, but not necessarily the other way around

Drive Pitch**

Is the drive cog center distance around the circumference of the cogs on the drive axle. It must match the existing track or the drive cogs must be changed.

- 2.52" primarily machines manufactured before 2007
- 2.86" especially on recent models manufactured after 2007
- 3" and new 3.5" drive pitch for lowest weight on select mountain sleds

Lug Height***

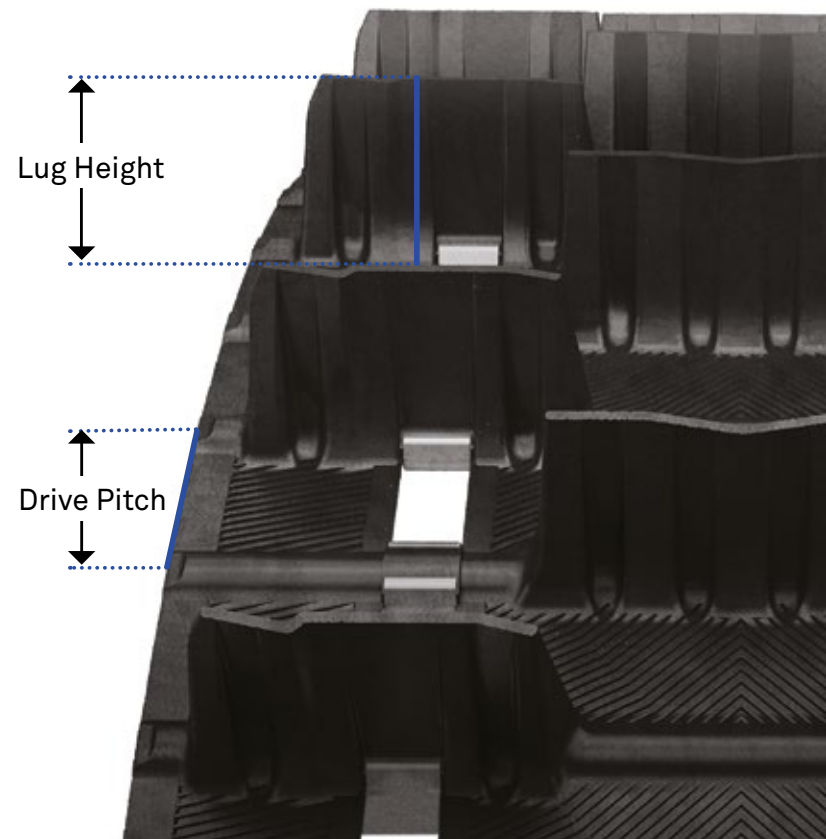
Is the distance the lugs extend above the track surface.

- 1" - <1.5" – trail
- 1.5" - <2" – on/off trail
- 2" and greater – deep snow

* Aftermarket parts are available for mods when needed

** Some other drive pitches are also found on older models

*** Check for adequate clearance before going to a taller lug track



SPECIFICATIONS

LENGTH	LUG HEIGHT	CATEGORY	TRACK DESIGN	MODEL #	REF.	LENGTH	LUG HEIGHT	CATEGORY	TRACK DESIGN	MODEL #	REF.		
129"	1.5"	Cross-country	RipSaw II 1.5	9305C	p. 23	137"	1.75	Cross-country	Hurricane 175	9402C	p. 18	NEW	
129"	1.6"	Cross-country	Cobra 1.6	9292C	p. 22	137"	1.75"	Cross-country	Challenger Trail	9070C	p. 20		
129"	1.6"	Cross-country	ICE Cobra 1.6	9245C	p. 22	137"	1.75	Racing	Sno X	9332R	p. 35		
129"	1.75"	Racing	Sno X	9294R	p. 35	137"	2"	Cross-country	BackCountry X2	9258C	p. 19		
129"	1.75"	Cross-country	BackCountry X	9288C	p. 21	137"	2"	Mountain	Challenger	9186M	p. 29		
NEW	129"	1.75"	Cross-country	Hurricane 175	9401C	p. 18	137"	2.313"	Mountain	Challenger	9204M	p. 29	
	129"	2"	Cross-country	BackCountry X2	9257C	p. 19	139"	0.725"	Utility	Explore 725	9011U	*	
	136"	0.525"	Racing	Grass / Ice Drag	9929R	p. 37	141"	1.75"	Cross-country	BackCountry X	9254C	p. 21	
	136"	0.625"	Racing	Asphalt Drag	9897R	p. 37	141"	2.5"	Mountain	Challenger Extreme	9329M	p. 28	
	136"	0.725"	Trail	DuraSport 725	9783T	*	144"	0.525"	Racing	Grass / Ice Drag	9084R	p. 37	
	136"	1"	Trail	HackSaw	9010H	p. 15	144"	0.525"	Racing	Grass / Ice Drag	9976R	p. 37	
	136"	1"	Trail	Energy	9794T	*	144"	1"	Racing	Grass / Ice Drag	9359R	p. 37	
	136"	1.063"	Trail	ICE Attak	9029H	p. 14	144"	1.22"	Trail	ICE Attak XT	9203H	p. 13	
	136"	1.22"	Trail	ICE Attak XT	9202H	p. 13	144"	1.352"	Trail	Cobra	9107H	p. 11	
	136"	1.25"	Trail	RipSaw	9969H	p. 12	144"	1.25"	Trail	RipSaw	9006H	p. 12	
	136"	1.25"	Trail	RipSaw II	9216H	p. 12	144"	1.5"	Cross-country	CrossOver	9003C	WEB	
	136"	1.352"	Trail	Cobra	9061H	p. 11	144"	1.6"	Cross-country	ICE Cobra 1.6	9315C	p. 22	
	136"	1.5"	Cross-country	Intense	9108C	p. 23	144"	1.6"	Cross-country	Cobra 1.6	9316C	p. 22	
	136"	1.6"	Cross-country	ICE Cobra 1.6	9314C	p. 22	144"	1.75"	Cross-country	BackCountry	9143C	p. 21	
	136"	1.75"	Cross-country	BackCountry	9142C	p. 21	144"	1.75"	Racing	Sno X (BackCountry)	9206R	p. 35	
	136"	1.75"	Cross-country	Challenger Trail	9933C	p. 20	144"	2"	Mountain	Challenger	9875M	p. 29	
	136"	1.75"	Racing	Sno X (BackCountry)	9205R	p. 35	146"	1.22"	Trail	ICE Attak XT	9192H	p. 13	
	136"	2"	Mountain	Challenger	9797M	p. 29	146"	1.352"	Trail	Cobra	9120H	p. 11	
	137"	1"	Trail	RipSaw II	9224H	p. 12	146"	1.5"	Trail	Storm 150	9371H	p. 10	
	137"	1.22"	Trail	ICE Attak XT	9191H	p. 13	146"	1.5"	Trail	ICE Storm 150	9391H	p. 10	NEW
	137"	1.25"	Trail	RipSaw II	9223H	p. 12	146"	1.6"	Cross-country	ICE Cobra 1.6	9247C	p. 22	
	137"	1.352"	Trail	Cobra	9307H	p. 11	146"	1.6"	Cross-country	ICE Cobra 1.6	9250C	p. 22	
	137"	1.5"	Trail	Storm 150	9371H	p. 10	146"	1.6"	Racing	Sno X	9333R	p. 35	
NEW	137"	1.5"	Trail	ICE Storm 150	9390H	p. 10	146"	1.75"	Cross-country	Challenger Trail	9167C	p. 20	
	137"	1.5"	Cross-country	RipSaw II 1.5	9306C	p. 23	146"	1.75"	Cross-country	Hurricane 175	9403C	p. 18	NEW
	137"	1.6"	Cross-country	Cobra 1.6	9264C	p. 22	146"	2"	Mountain	Challenger	9187M	p. 29	
	137"	1.6"	Cross-country	ICE Cobra 1.6	9246C	p. 22	146"	2.313"	Mountain	Challenger	9064M	p. 29	
	137"	1.6"	Cross-country	ICE Cobra 1.6	9249C	p. 22	146"	2.5"	Mountain	Challenger Extreme	9144M	p. 28	
	137"	1.75"	Cross-country	BackCountry X	9289C	p. 21	146"	2.5"	Mountain	Challenger Extreme	9145M	p. 28	

SPECIFICATIONS

LENGTH	LUG HEIGHT	CATEGORY	TRACK DESIGN	MODEL #	REF.
146"	2.5"	Mountain	Peak 2.5	9179M	p. 29
146"	2.5"	Mountain	Peak 2.5	9182M	p. 29
151"	1.25"	Trail	RipSaw	9007H	*
151"	1.5"	Cross-country	CrossOver	9004C	WEB
151"	2"	Mountain	Challenger	9876M	p. 29
153"	2.5"	Mountain	Challenger Extreme	9174M	p. 28
153"	2.8"	Mountain	Conquer 280	9337M	p. 27
153"	3.2"	Mountain	Challenger X3.2	9321M	p. 26
154"	1.375"	Utility	RipSaw Full	9089U	p. 33
154"	1.5"	Utility	Cobra WT	9196U	p. 32
154"	1.5"	Utility	Cobra WT	9322U	p. 32
154"	1.6"	Cross-country	ICE Cobra 1.6	9272C	p. 22
154"	1.6"	Cross-country	ICE Cobra 1.6	9273C	p. 22
154"	1.6"	Racing	Cobra 1.6	9355R	*
154"	1.6"	Cross-country	Cobra 1.6	9282C	p. 22
154"	1.8"	Utility	Cobra WT	9195U	p. 32
154"	2"	Mountain	Challenger	9088M	p. 29
154"	2"	Mountain	Challenger	9188M	p. 29
154"	2.313"	Mountain	Challenger	9065M	p. 29
154"	2.5"	Mountain	Challenger Extreme	9102M	p. 28
154"	2.5"	Mountain	Challenger Extreme	9104M	p. 28
154"	2.5"	Mountain	Peak 2.5	9230M	p. 29
154"	2.5"	Mountain	Peak 2.5	9232M	p. 29
NEW	154"	2.6"	Mountain	Conquer 260	9392M p. 27
154"	2.8"	Mountain	Conquer 280	9341M	p. 27
156"	1"	Utility	Explore	9806U	*
156"	1.25"	Utility	ICE Wide Track	9008U	p. 33
156"	1.25"	Utility	RipSaw Full	9002U	p. 33
156"	1.25"	Utility	RipSaw Full	9151U	p. 33
156"	1.5"	Utility	Cobra SWT	9261U	p. 32
156"	1.75"	Utility	Cobra SWT	9260U	p. 32
156"	2.8"	Mountain	Conquer 280	9336M	p. 27
156"	3"	Mountain	Challenger X3	9309M	p. 26
156"	3.2"	Mountain	Challenger X3.2	9320M	p. 26

LENGTH	LUG HEIGHT	CATEGORY	TRACK DESIGN	MODEL #	REF.
159"	1.5"	Cross-country	CrossOver	9005C	WEB
159"	2"	Mountain	Challenger	9884M	p. 29
162"	2.5"	Mountain	Challenger Extreme	9175M	p. 28
162"	2.5"	Mountain	Challenger Extreme	9176M	p. 28
162"	2.8"	Mountain	Conquer 280	9335M	p. 27
162"	3"	Mountain	Challenger X3	9219M	p. 26
162"	3"	Mountain	Challenger X3	9220M	p. 26
162"	3"	Mountain	Challenger X3	9220MSE	p. 26
162"	3.2"	Mountain	Challenger X3.2	9319M	p. 26
163"	2.5"	Mountain	Challenger Extreme	9105M	p. 28
163"	2.5"	Mountain	Peak 2.5	9231M	p. 29
163"	2.5"	Mountain	Peak 2.5	9233M	p. 29
165"	2.6"	Mountain	Conquer 260	9393M	p. 27 NEW
165"	2.8"	Mountain	Conquer 280	9340M	p. 27
174"	2.5"	Mountain	Challenger Extreme	9035M	p. 28
174"	2.5"	Mountain	Challenger Extreme	9036M	p. 28
174"	2.8"	Mountain	Conquer 280	9334M	p. 27