

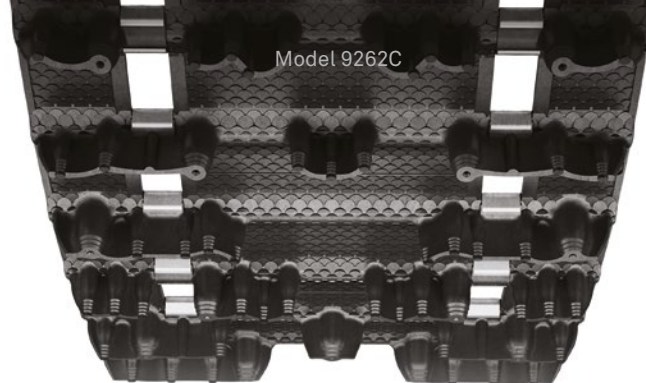
CAMSO

## ICE Cobra 1.6

Hard grip in soft snow

The "Denis Courtemanche Special Edition," in honor of long-time recreational products director who has devoted 50 years to improving snowmobile track design. Factory pre-studded with 1.6" lugs for excellent all-round performance, especially on ungroomed trails.

- Cupped lugs for superior acceleration and braking in loose, soft snow conditions
- Flexible lug design for superior off-trail performance



CAMSO

## Cobra 1.6

Performance, on or off the trail

The Cobra design taken to another level. Excellent performance on the soft, loose snow of ungroomed trails, now available in a 1.6" lug height for even better traction and performance while on/off-trail.

- Cupped lugs for superior acceleration and braking in loose, soft snow conditions
- Flexible lug design for superior off-trail performance
- Designed for factory pre-studded, select lugs are more rigid for traction on hard-packed snow performance

MODEL	DIMENSIONS	LUG HEIGHT	WEIGHT	DRIVE PITCH	CLIP CONFIG.		MODEL	DIMENSIONS	LUG HEIGHT	WEIGHT	DRIVE PITCH	CLIP CONFIG.	
9244C	15" x 120" (38 cm x 305 cm)	1.6" (43 mm)	38 lb (17.25 kg)	2.86" (73 mm)	Full	▲ ■	9262C	15" x 120" (38 cm x 305 cm)	1.6" (43 mm)	38 lb (17.25 kg)	2.86" (73 mm)	Full	■
9245C	15" x 129" (38 cm x 328 cm)	1.6" (43 mm)	41 lb (18.5 kg)	2.86" (73 mm)	Full	▲ ■	9263C	15" x 129" (38 cm x 328 cm)	1.6" (43 mm)	40 lb (18.25 kg)	2.86" (73 mm)	Full	■
9246C	15" x 137" (38 cm x 348 cm)	1.6" (43 mm)	43 lb (19.5 kg)	2.86" (73 mm)	Full	▲ ■	9264C	15" x 137" (38 cm x 348 cm)	1.6" (43 mm)	43 lb (19.5 kg)	2.86" (73 mm)	Full	■
9247C	15" x 146" (38 cm x 371 cm)	1.6" (43 mm)	46 lb (20.9 kg)	2.86" (73 mm)	Full	▲ ■	9282C	16" x 154" (41 cm x 391 cm)	1.6" (43 mm)	50 lb (22.75 kg)	2.86" (73 mm)	Full	■
9249C	16" x 137" (41 cm x 348 cm)	1.6" (43 mm)	45 lb (20.75 kg)	2.86" (73 mm)	Full	▲ ■	9291C	15" x 120" (38 cm x 305 cm)	1.6" (43 mm)	39 lb (17.75 kg)	2.86" (73 mm)	Full	
9250C	16" x 146" (41 cm x 371 cm)	1.6" (43 mm)	48 lb (21.8 kg)	2.86" (73 mm)	Full	▲ ■	9292C	15" x 129" (38 cm x 328 cm)	1.6" (43 mm)	41 lb (18.5 kg)	2.86" (73 mm)	Full	
9272C	16" x 154" (41 cm x 391 cm)	1.6" (43 mm)	50 lb (22.5 kg)	2.86" (73 mm)	Full	▲ ■	9316C	15" x 144" (38 cm x 366 cm)	1.6" (43 mm)	49.5 lb (22.5 kg)	2.52" (64 mm)	Full	
9273C <sup>1</sup>	15" x 154" (38 cm x 391 cm)	1.6" (43 mm)	47 lb (21.25 kg)	2.86" (73 mm)	Full	▲ ■							
9312C	15" x 121" (38 cm x 307 cm)	1.6" (43 mm)	42 lb (19.1 kg)	2.52" (64 mm)	Full	▲							
9313C	15" x 128" (38 cm x 325 cm)	1.6" (43 mm)	44.5 lb (20.2 kg)	2.52" (64 mm)	Full	▲							
9314C	15" x 136" (38 cm x 345 cm)	1.6" (43 mm)	47 lb (21.3 kg)	2.52" (64 mm)	Full	▲							
9315C	15" x 144" (38 cm x 366 cm)	1.6" (43 mm)	50 lb (22.7 kg)	2.52" (64 mm)	Full	▲							

<sup>1</sup> These track models feature post-holes for third drive

<sup>1</sup> These track models feature center hole for third driver.

▲ Embedded sharp tip lug studs ■ Single-ply construction ● Enhanced stud easy tracks

When it comes to quality powersports tracks, Camso is the brand you can depend on.