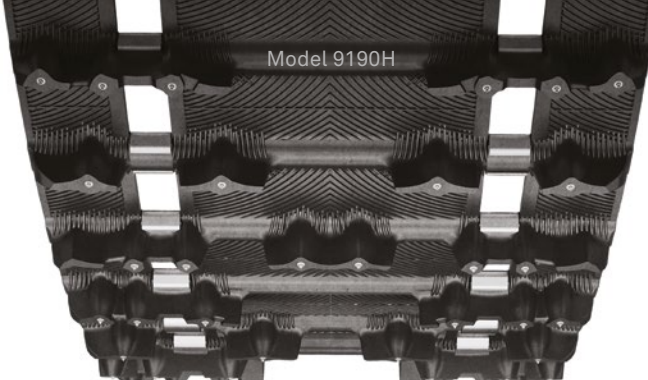




Model 9077H



Model 9190H

CAMSO

ICE Ripper XT

Handles and holds

The original factory pre-studded track is a proven performer. With a design that gives riders outstanding handling and stability, it's a true classic.

- Factory pre-studded for improved traction and control
- 1.25" lug height for improved traction and stability
- RipSaw-based attack angled lugs for excellent forward and lateral bite

CAMSO

ICE Attak XT

Nailed to the trail

A highly aggressive trail model design featuring hundreds of sharp-tip lug studs, giving riders traction and control they can count on.

- Factory pre-studded for improved traction and control
- Lug design delivers better traction than the ICE Ripper XT
- 1.22" lug height provides better handling and stability
- Optimized rubber compound for superior traction on groomed trail

MODEL	DIMENSIONS	LUG HEIGHT	WEIGHT	DRIVE PITCH	CLIP CONFIG.
9077H	15" x 121" (38 cm x 307 cm)	1.25" (32 mm)	39 lb (17.75 kg)	2.52" (64 mm)	Full ▲ ■
9079H	15" x 136" (38 cm x 345 cm)	1.25" (32 mm)	44 lb (20 kg)	2.52" (64 mm)	Full ▲ ■
9164H	15" x 120" (38 cm x 305 cm)	1.25" (32 mm)	36 lb (16.25 kg)	2.86" (73 mm)	Full ▲ ■

MODEL	DIMENSIONS	LUG HEIGHT	WEIGHT	DRIVE PITCH	CLIP CONFIG.
9190H	15" x 120" (38 cm x 305 cm)	1.22" (31 mm)	37 lb (16.75 kg)	2.86" (73 mm)	Full ▲ ■
9191H	15" x 137" (38 cm x 348 cm)	1.22" (31 mm)	42 lb (19 kg)	2.86" (73 mm)	Full ▲ ■
9192H	15" x 146" (38 cm x 371 cm)	1.22" (31 mm)	44 lb (20 kg)	2.86" (73 mm)	Full ▲ ■
9200H	15" x 121" (38 cm x 307 cm)	1.22" (31 mm)	40 lb (18.25 kg)	2.52" (64 mm)	Full ▲ ■
9201H	15" x 128" (38 cm x 325 cm)	1.22" (31 mm)	42 lb (19 kg)	2.52" (64 mm)	Full ▲ ■
9202H	15" x 136" (38 cm x 345 cm)	1.22" (31 mm)	45 lb (20.5 kg)	2.52" (64 mm)	Full ▲ ■
9203H	15" x 144" (38 cm x 365 cm)	1.22" (31 mm)	47 lb (21.25 kg)	2.52" (64 mm)	Full ▲ ■
9236H	15" x 129" (38 cm x 328 cm)	1.22" (31 mm)	39 lb (17.75 kg)	2.86" (73 mm)	Full ▲ ■



▲ Embedded sharp tip lug studs ■ Single-ply construction ● Enhanced stud easy tracks

Accept no compromises, choose only powersports tracks.