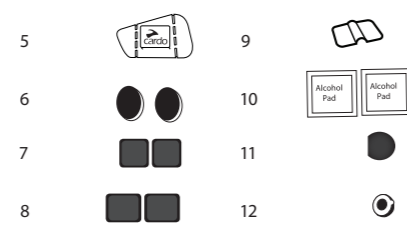
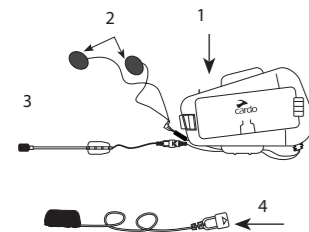
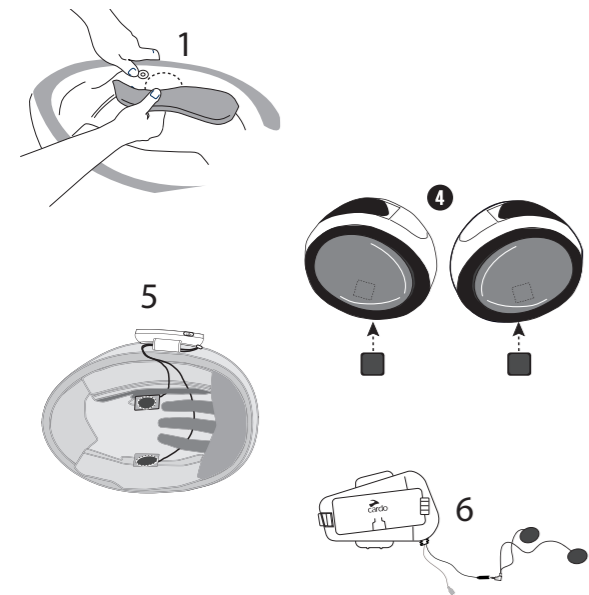




CARDO FREECOM Installation Instructions



CONTENTS OF BOX
 1 Cradle with mic and speaker jacks 2 Speakers 3 Hybrid mic Corded mic (FREECOM 2/4 only) 5 Adhesive plate 6 Speaker booster pads 7 Square Velcro pads for speakers (x2)
 8 Rectangular Velcro pads for hybrid mic (x2) 9 Hybrid mic clip 10 Alcohol pads (x2) 11 Hybrid mic replacement sponge Corded mic replacement sponge 13 Freecom Headset (not shown)



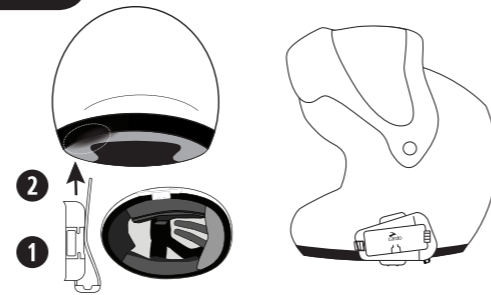
PREPARING THE HELMET FOR INSTALLATION
Note: These instructions are for helmets with removable liners and pads. If, in your helmet, they cannot be removed, push them gently aside while cleaning and installing speakers, microphones and wires.

INSTALLING THE SPEAKERS
 For best sound clarity, place the speakers directly opposite and as close as possible to your ears.
Note: If using two speakers in a helmet is prohibited in your jurisdiction, position both speakers on one side of the helmet.

- In the helmet, remove the liners and pads to gain access to speaker locations.
- Clean the speaker locations with the alcohol pad.
- If the speaker recesses are deep, attach both Velcro speaker booster pads to the helmet.
- Attach both square Velcro pads.
- On the same side as the cradle, attach the speaker with the shorter wire to the Velcro pad and attach the speaker with the longer wire to the Velcro pad on the other side.
- Route the speaker wires toward the cradle and connect to the cradle speaker connector.

INTRODUCTION
 This installation guide will guide you in attaching the FREECOM headset and cradle to your motorcycle helmet.

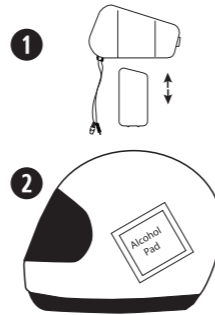
OPTION A



OPTION A – USING THE PRE-INSTALLED CRADLE CLAMP

- Position the cradle on the left side of the helmet.
- Insert the cradle clamp between the helmet shell and padding and push all the way in.

OPTION B

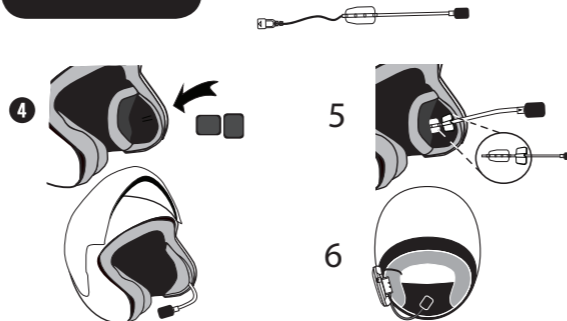


OPTION B – USING THE CRADLE ADHESIVE PLATE
 When the clamp cannot be used, attach the cradle to your helmet with the adhesive plate.
While we have no reason to believe that this option might negatively affect any helmet, Cardo does not assume any responsibility, irrespective of its nature and circumstances. The adhesive plate is offered as an option that you may use at your own risk and subject to renouncement of any future claims.

Note: Using this option can only be performed once!

- Remove the pre-installed clamp from the cradle by pushing the release tab on the inside of the cradle and sliding the clamp out.
- With the alcohol pad, clean the left side of the helmet where you will place the adhesive plate.
- On the adhesive plate, remove the release liner from the adhesive tape and carefully put the plate in position, then press the adhesive plate firmly to form a good bond along the plate.
- Slide the cradle onto the plate until it clicks.

OPTION A



INSTALLING THE MICROPHONE

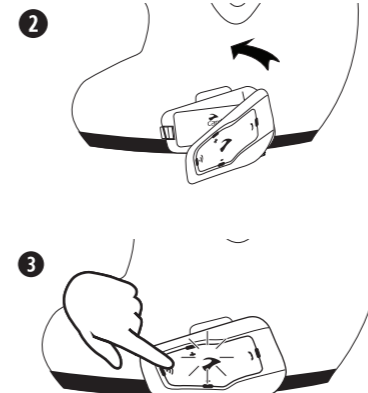
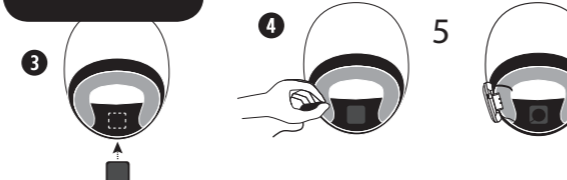
OPTION A – HYBRID MICROPHONE (FOR OPEN-FACE AND MODULAR HELMETS)

- In the helmet, on the same side as the cradle, remove any pads at the helmet front.
- Position the hybrid microphone so that the microphone itself is opposite your mouth, and note the position of the boom relative to the helmet.
- Clean the hybrid microphone location with the alcohol pad.
- Attach both rectangular Velcro pads, adjacent to each other, near the helmet rim.
- Attach the hybrid microphone and clip to the Velcro pads, with the yellow arrow facing your mouth.
- Route the microphone wire toward the cradle and connect to the cradle microphone connector.

OPTION B – CORDED MICROPHONE (FOR FULL-FACE HELMETS)

- In the helmet, on the same side as the cradle, remove any pads at the helmet front.
- Clean the corded microphone location with the alcohol pad.
- Attach the rectangular Velcro pad near the helmet rim, opposite your mouth.
- Attach the microphone to the Velcro pad.
- Route the microphone wire toward the cradle and connect to the cradle microphone connector.

OPTION B



EN | FINAL STEPS

- Return the liner and pads to their position in the helmet, taking care to secure all wires under the liner and pads.
- Attach the CARDO FREECOM headset to the cradle.
- Switch the headset on, as described in the Pocket Guide or User Guide.