

**CST**<sup>®</sup>

**WHERE PASSION  
MEETS THE GROUND**

# AUTOMOTIVE TIRE CATALOGUE



2022-23







**WHERE PASSION  
MEETS THE GROUND**



# OUR COMPANY

CST was founded in 1989 by Cheng Shin Rubber (Xiamen) Ind., Ltd. The Cheng Shin Tire Group is the top tire manufacturer in China and one of the top 10 tire manufacturers in the world, with products distributed in more than 150 countries.

CST covers a wide range of market segments. CST products include tires and tubes for passenger, truck and bus, bicycle, motorcycle, ATV, forklift, agricultural, and lawn and garden equipment.

The company's new factory in Xiamen, China, which produces passenger radial and light truck radial tires, brings CST's tire development and manufacturing to a world-class level. This state-of-the-art facility employs innovative technology and advanced equipment from Germany, Italy, Holland, Japan and Taiwan.

Adhering to the most stringent international standards, CST has attained certificates and awards including DOT (US Department of Transportation) certification, ISO9001, E-Mark, IATF16949 and the China Well Known Brand Award.

With a first-rate manufacturing operation and highly efficient logistics, CST sets the standard for excellence in the tire industry. At CST, quality, integrity and service are more than just words: They're the foundation of the company from top management to the factory floor and beyond.

**TAIWAN  
R&D**



**XIAMEN,  
CHINA**



**USA  
R&D**



# Contents

## Adventure



SAHARA MT/II	6
SAHARA ATM <b>NEW</b>	6
SAHARA AT/II	8
SAHARA ATS <b>NEW</b>	10
SAHARA CS912	12
MUD KING CL98 <b>NEW</b>	13
MUD KING CL28 <b>NEW</b>	14
DRAGON CLAW CL21M <b>NEW</b>	16
LAND DRAGON CL18M <b>NEW</b>	18
LAND DRAGON CL18	20
LAND DRAGON C888	22
VOYAGE VA76 <b>NEW</b>	24

## Performance



ADRENO AD-R9/SUV <b>NEW</b>	28
ADRENO AD-R8	30

## Touring



MEDALLION MD-A7/SUV <b>NEW</b>	34
MEDALLION MD-A1	36
MEDALLION MD-S1 <b>NEW</b>	38
MARQUIS MR-C5 <b>NEW</b>	40
MARQUIS MR61	42

## Commercial



VAN MASTER VR36	46
CL31	48
CS105	49
CL02	49





**CST**®

**WHERE PASSION  
MEETS THE GROUND**

**ADVENTURE**









# SAHARA M/T II

4X4 – Extreme off-road super grip



## Excellent traction in extreme conditions

3D block design, inspired by a ram's hoof, increases strength and durability and enhances the ability to expel mud and debris



Grooved rib design improves mud digging in tough terrain



3D block stepped edges enhance the ability to disperse mud and stone



## Impressive durability

Heat dissipation design minimises sudden heat changes to prevent compound deterioration



Tread's 3D blocks and pattern rigidity increase durability



Heat dissipation design minimises sudden heat changes to prevent compound deterioration



## Heavy loading capacity

High-rigidity steel belt construction delivers a heavy duty tire with increased load capacity  
3-ply design provides great durability in off-road conditions







OUTSTANDING OFF-ROAD ABILITY



EXCELLENT DURABILITY



IMPRESSIVE LOADING CAPACITY



INSPIRED BY NATURE



### Extra sidewall protection

Aggressive armoured sidewall for strong traction

Enhanced sidewall and shoulder strength improves off-road performance and puncture resistance

### Orange outline lettering

Unique orange outline lettering on the sidewall adds a splash of eye-catching colour to your vehicle



AVAILABLE SIZES

Rim	Size	Load./SpeedRating	Approved Rim Width (in)	Max Load (kg)	Max Pressure (PSI)
15	31X10.50R15 LT 6PR	109Q*	7.0-(8.5)-9.0	1030	50
	32X11.50R15 LT 6PR	113Q*	8.0-(9.0)-10.0	1150	50
	33X12.50R15 LT 6PR	108Q*	8.5-(10.0)-11.0	1000	35
	LT235/75R15 6PR	104/101Q*	6.0-(6.5)-7.0	S900/D825	50
16	LT245/75R16 6PR	108/104Q*	6.5-(7.0)-7.5	S1000/D900	50
	LT245/75R16 10PR	120/116Q*	6.5-(7.0)-8.0	S1400/D1250	80
	LT265/75R16 8PR	119/116Q*	7.0-(7.5)-8.0	S1360/D1250	65
	LT265/75R16 10PR	123/120Q	7.0-(7.5)-8.0	S1550/D1400	80
	LT285/75R16 8PR	122/119Q	7.5-(8.0)-8.5	S1500/D1360	65
17	LT265/65R17 8PR	117/114Q*	7.5-(8.0)-9.5	S1285/D1180	65
	LT265/70R17 8PR	121/118Q*	7.5-(8.0)-9.0	S1450/D1320	65

NEW

NEW

\*POR = Professional off-road tire exempt from EU Labelling regulation











**NEW**

# SAHARA ATM

4X4 – Traction and durability with added style

**AVAILABLE  
SIZES**

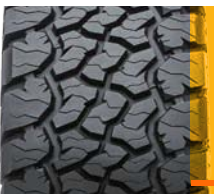
 Rim	 Size	 Load./SpeedRating	 Approved Rim Width (in)	 Max Load (kg)	 Max Pressure (PSI)
16	LT245/70R16 8PR	113/110Q*	6.5-(7.0)-7.5	1150/1060	65
17	LT265/65R17 10PR	120/117Q*	7.5-(8.0)-9.5	1400/1285	65
18	LT265/60R18 8PR	114/110Q*	7.5-(8.0)-9.5	1180/1060	65
	LT265/60R18 10PR	119/116Q*	7.5-(8.0)-9.5	1360/1250	80

\*POR = Professional off-road tire exempt from EU Labelling regulation



**Extra shoulder grip**

Extended grooves in the tire shoulder deliver excellent traction in off-road conditions



Special shoulder design gives extra grip and traction to escape from hazardous road conditions and difficult off-road situations





Wider tread width and tire profile compared with previous model for a better appearance and prolonged mileage

3D zig-zag tread design maximises traction and stability for off-road conditions

Optimised pattern design for longer mileage and durability compared with previous model

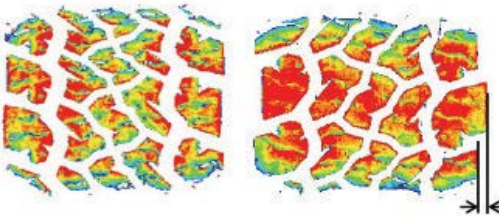
Highly rigid steel belts deliver outstanding driving stability and load capacity

New advanced tread compound provides great durability and prevents tread dropping in hazardous road conditions

Optimised pattern design for a longer mileage and durability compared to previous model

PREVIOUS MODEL

ATM



### Armoured tire shoulder

Special design provides extra protection on tire shoulder to prevent puncture and damage, giving excellent traction on snow, mud, rock terrain



LONG TREAD LIFE



IMPROVED DURABILITY



HIGH LOADING CAPACITY



# SAHARA A/T II

4X4 – Ultimate traction on all terrains

Rib design along the shoulder area provides sidewall protection and added puncture resistance

Aggressive armoured shoulder design for strong traction and extra puncture resistance

High-rigidity steel belt construction delivers increased load capacity



Proud sponsors of  
BAS AUTOSPORT

BAS Autosport is a professional race team based in the Netherlands, which has competed in different rally raid events internationally over the past 6 years.

Bas van Driel is the driver ably supported by his co-driver, Han van Goch.

They have twice won the national championship in the Netherlands, which are races with Bowler and Redlined Nissan and Can-am's.

Their tire of choice is CST's SAHARA A/T II, a champion tire for the winner.



OUTSTANDING OFF-ROAD PERFORMANCE



EXCELLENT DURABILITY



PERFECT LOADING CAPACITY



Square tire profile design provides a flat contact patch with high load capacity

Special pattern designed with jagged edges for extra traction to maximise off-road performance

The tread pattern's void ratio is reduced to optimise tire mileage and tread life



3D block pattern inspired by amoeba structures delivers excellent performance in all terrains

Unique orange outline lettering on the sidewall adds eye-catching colour to your vehicle



# AVAILABLE SIZES

Rim	Size	Load./SpeedRating	Approved Rim Width (in)	Max Load (kg)	Max Pressure (PSI)	
15	30X9.5R15 LT 6PR	104Q*	6.5-(7.5)-8.5	900	50	
	31X10.50R15 LT 6PR	109Q*	7.0-(8.5)-9.0	1030	50	
16	245/70R16	111T	6.5-(7.0)-8.0	1090	50	
	255/70R16	111T	6.5-(7.5)-8.5	1090	44	
	265/70R16	112T	7.0-(8.0)-9.0	1120	44	
	LT235/70R16 6PR	104/101Q*	6.0-(7.0)-7.5	S900/D825	50	<b>NEW</b>
	LT265/70R16 8PR	117/114Q*	7.0-(8.0)-8.5	S1285/D1180	65	<b>NEW</b>
	LT245/75R16 6PR	108/104Q*	6.5-(7.0)-8.0	S1000/D910	50	
	LT265/75R16 8PR	119/116Q*	7.0-(7.5)-8.0	S1360/D1250	65	
	LT265/75R16 10PR	123/120Q	7.0-(7.5)-8.0	S1550/D1400	80	
	LT285/75R16 6PR	116/113Q*	7.5-(8.0)-9.0	S1250/D1150	50	
	LT305/70R16 8PR	118/115Q*	8.0-(9.0)-9.5	S1320/D1215	50	
17	LT315/75R16 8PR	121Q*	8.0-(8.5)-11.0	1450	50	
	265/65R17	112T	7.5-(8.0)-9.5	1120	44	
	LT265/70R17 10PR	121/118Q*	7.0-(8.0)-8.5	S1450/D1320	80	<b>NEW</b>
	LT285/70R17 8PR	121/118Q*	7.5-(8.5)-9.0	S1450/D1320	65	
	LT305/70R17 8PR	119/116Q*	8.0-(9.0)-9.5	S1360/D1250	50	
18	LT315/70R17 8PR	121/118Q*	8.0-(9.5)-11.0	S1450/D1320	65	
	265/60R18	110T	7.5-(8.0)-9.5	1060	44	
	LT285/60R18 8PR	118/115Q*	8.0-(8.5)-10.0	S1320/D1215	65	<b>NEW</b>
	LT265/70R18 10PR	124/121S	7.0-(8.0)-9.0	S1600/S1450	80	<b>NEW</b>
	LT275/70R18 10PR	125/122S	7.0-(8.0)-8.5	S1650/D1500	80	<b>NEW</b>

UTQG rating 680 A B

\*POR = Professional off-road tire exempt from EU Labelling regulation



**NEW**

# SAHARA ATS

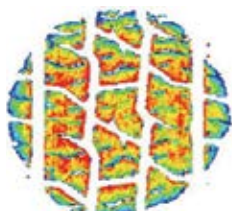
**4X4** – All terrain advanced technology for unrivalled performance

## Engineered to perform impressively

Optimised pattern design delivers even pressure distribution for a better footprint that gives the ATS outstanding handling, comfort and mileage compared with previous model

PREVIOUS MODEL

ATS

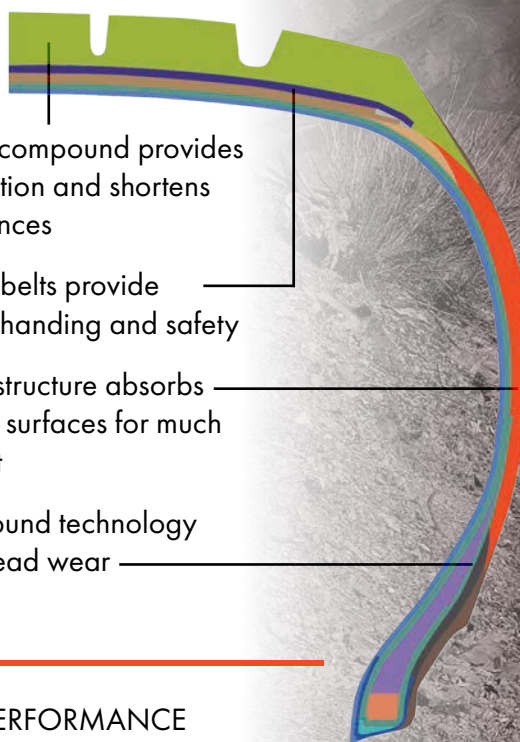


Semi-silica tread compound provides excellent wet traction and shortens wet braking distances

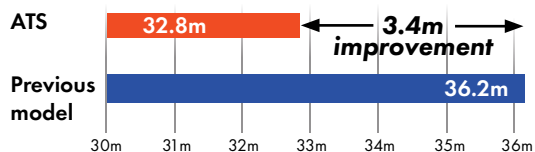
Highly rigid steel belts provide great stability for handling and safety

Special sidewall structure absorbs impact from road surfaces for much improved comfort

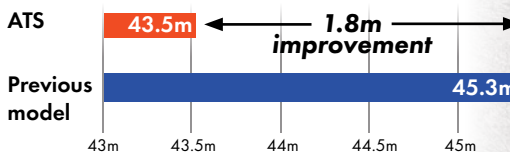
Innovative compound technology delivers longer tread wear



## WET BRAKING PERFORMANCE



## DRY BRAKING PERFORMANCE



**AVAILABLE SIZES**

Rim/Aspect Ratio	Size	Load./SpeedRating	Approved Rim Width (in)	Max Load (kg)	Max Pressure (PSI)
15	75	215/75R15 100T	5.5-(6.0)-7.0	800	44
		235/75R15 109T	6.0-(6.5)-8.0	1030	50
16	65	215/65R16 98H	6.0-(6.5)-7.5	750	44
		235/70R16 109H XL	6.0-(7.0)-8.0	1030	50
	70	245/70R16 111H XL	6.5-(7.0)-8.0	1090	50
		255/70R16 111H	6.5-(7.5)-8.5	1090	44
17	60	225/60R17 103H XL	7.0-(8.0)-9.0	1120	44
		265/70R16 112H	7.0-(8.0)-9.0	1120	44
	65	225/65R17 102H	6.0-(6.5)-8.0	875	50
		245/65R17 111H XL	6.0-(6.5)-8.0	850	44
		265/65R17 112H	6.5-(7.0)-8.5	1090	50
70	245/70R17 114H XL	7.5-(8.0)-9.5	1120	44	
	265/65R17 112H	7.5-(8.0)-9.5	1120	44	
18	60	245/70R17 114H XL	6.5-(7.0)-8.0	1180	50
		265/60R18 114H XL	7.5-(8.0)-9.5	1180	50

UTQG rating 840 A A





LONG TREAD LIFE



IMPROVED DURABILITY



GREAT HANDLING

Four main vertical grooves offer outstanding water dispersal to prevent the risk of aquaplaning

Bridges and sipes in the shoulder's grooves minimise noise and road surface impact for a quiet, comfortable ride



Extra lateral grooves and sipes enhance comfort for a great driving experience

Compared with the previous model, the ATS has wider tread and tire profile for better appearance and more mileage



ATS

PREVIOUS MODEL



# SAHARA CS912

## 4X4 – A robust tire for rugged terrain

Ideal for off-road driving, the Sahara CS912 delivers outstanding traction on the roughest surfaces, providing perfect balance between tread stiffness and tread noise and with staggered open shoulder blocks that enhance water dispersion, resulting in more grip and traction.

The staggered shoulder design enhances water dispersal, improving grip in muddy conditions

Multiple tread blocks enhance tread rigidity without compromising the comfort of the ride

3D block tread design provides excellent tread rigidity and traction in hazardous conditions

Excellent tread wear properties and resistance to cutting

Inverted angle grooves prevent stone retention, enhancing water dispersal and lowering tire noise







OUTSTANDING OFF-ROAD GRIP



RELIABLE LOADING CAPACITY



EXCELLENT DURABILITY

# AVAILABLE SIZES

Rim/Aspect Ratio	Size	Load./Speed Rating	Approved Rim Width (in)	Max Load (kg)	Max Pressure (PSI)	
14	75	215/75R14	100S	5.5-(6.0)-6.5	800	44
	15	70	225/70R15	100S	6.0-(6.5)-7.0	800
255/70R15			108T	6.5-(7.5)-8.5	1000	44
265/70R15		112S	7.0-(8.0)-9.0	1120	44	
75		225/75R15	102S	6.0-(6.0)-7.5	850	44
16	LT	LT215/75R15 6PR	100/97S	5.5-(6.0)-7.0	S800/D730	50
		LT235/75R15 6PR	104/101S	6.0-(6.5)-8.0	S900/D825	50
	60	235/60R16	104H XL	6.5-(7.0)-8.5	900	50
17	65	LT245/75R16 6PR	108/104S	6.0-(7.0)-8.0	S1000/D900	50
		205R16C 8PR	110/108Q*	5.5-(6.0)-6.5	S1060/D1000	65
17	65	235/65R17	104T	6.5-(7.0)-8.5	900	44
		275/65R17	115T	7.5-(8.0)-9.5	1215	44

UTQG rating 500 A B

\*POR = Professional off-road tire exempt from EU Labelling regulation



**NEW**

The CST Mud King is available in two models, the Mud King CL28 and the Mud King CL98

# MUD KING CL98/CL28



**CST**





# MUD KING CL98

- Widened sidewall blocks improve puncture resistance
- Grooves within blocks reduce tyre weight for improved control
- Fluid directional tread pattern delivers excellent sludge discharge performance
- Large shoulder blocks strengthen grounding position and offer improved anti-chunking properties
- For racing cars, SUVs and 4x4 cross-country vehicles



Rim	Size	Load./SpeedRating	Approved Rim Width (in)	Max Load (kg)	Max Pressure (PSI)
15	33X10.50-15 6PR	115K*	8.0-(8.5)-9.0	1215	45
16	35X11.50-16 6PR	120K*	9.0-(9.5)-9.5	1400	45
17	31X10.50-17 6PR	100K*	7.0-(7.0)-9.0	800	30

\*POR = Professional off-road tire exempt from EU Labelling regulation

# MUD KING CL28

- Straightforward and directional pattern design provides excellent traction and control
- Delivers superb water and mud dispersal
- Excellent self-cleaning properties
- Strengthened sidewall with lug design helps protect bead
- Special tread compound for outstanding resistance to puncture and wear
- For racing 4x4s, SUVs and 4x4 cross-country vehicles



Rim	Size	Load./SpeedRating	Approved Rim Width (in)	Max Load (kg)	Max Pressure (PSI)
16	32X10.50-16 6PR	114K*	7.0-(7.0)-9.0	1180	45

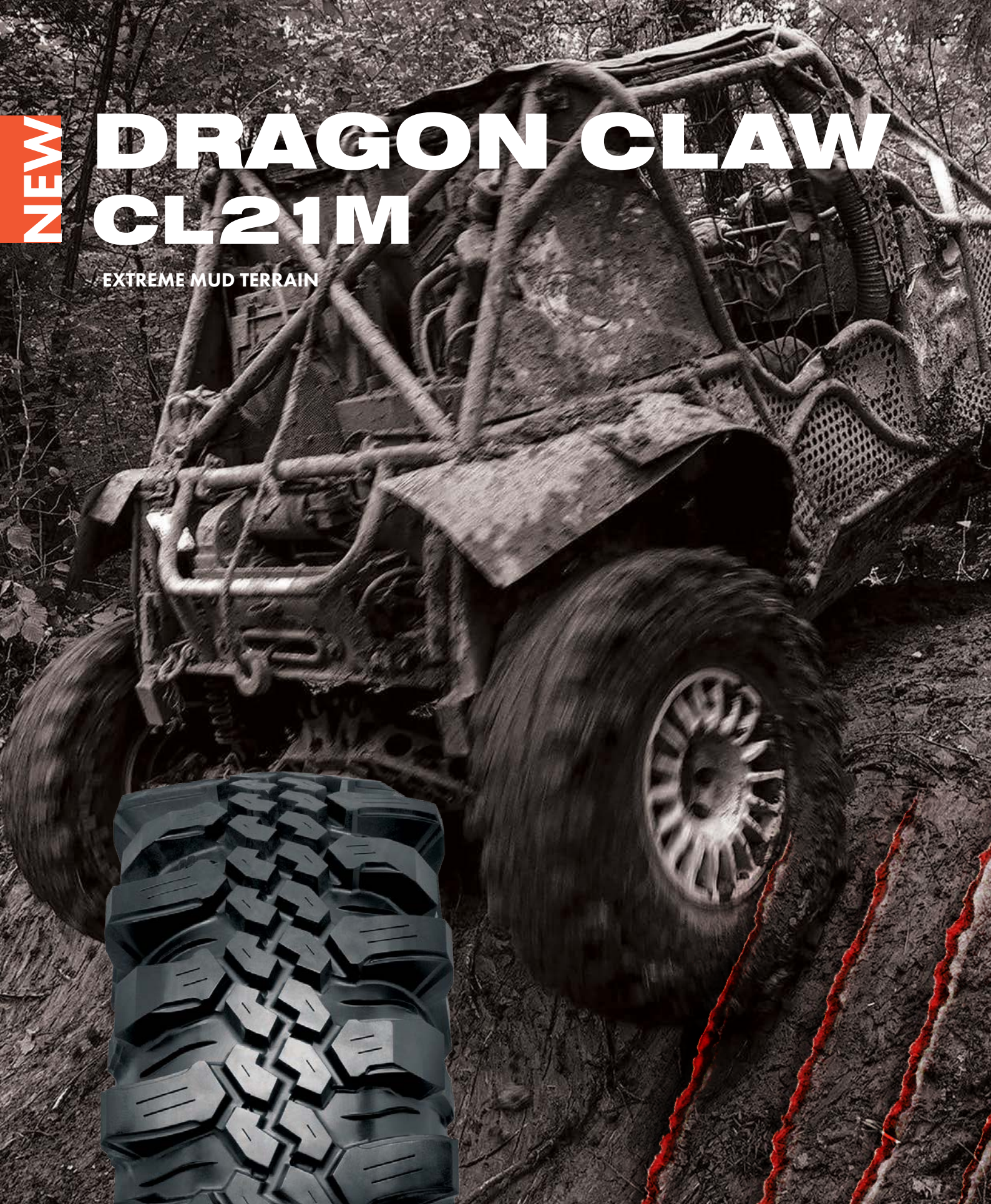
\*POR = Professional off-road tire exempt from EU Labelling regulation



**NEW**

# DRAGON CLAW CL21M

EXTREME MUD TERRAIN



UNRIVALLED TRACTION ON ALL TERRAINS



OUTSTANDING DURABILITY AND  
CUTTING AND ABRASION RESISTANCE



## The impenetrably fierce tire fully armoured with ferocious grip

- Special tread compound for outstanding resistance to puncture and wear
- Rough lug pattern gives excellent traction
- Long lug provides strong rigidity for shoulder
- Lengthened sidewall with thickened dragon claw for excellent cut resistance and supports the vehicle to run freely under low air pressure



Rim	Size	Load./SpeedRating	Approved Rim Width (in)	Max Load (kg)	Max Pressure (PSI)
16	39X12.50-16 6PR	115K*	9.5-(10.0)-10.5	1215	24

\*PQR = Professional off-road tire exempt from EU Labelling regulation





# NEW LAND DRAGON CL18M

EXTREME MUD TERRAIN

The toughest terrain needs the toughest tire

- 3D block design and aggressive tread pattern deliver outstanding performance in off-road conditions
- Extended shoulders provide rim protection
- Armoured shoulder and wide grooves improve traction during transitions between differing terrains
- The special pattern design in the shoulder area optimises water and mud dispersal
- Specially developed compound delivers outstanding durability and cutting resistance in hazardous terrain







SUPERB FOR EXTREME 4X4 SPORT



UNRIVALLED TRACTION ON ALL TERRAINS



OUTSTANDING DURABILITY AND CUTTING AND ABRASION RESISTANCE

### CL18M – UNRIVALLED COMPETITION PERFORMANCE

EVENT	LOCATION	DATE	TEAMS	TIRE	POSITION
GK Challenge	Selangor	Sep 2019	30	CL18M 35X10.50-16	<b>1st</b>
Pahang Challenge	Pahang	Oct 2019	25	CL18M 35X10.50-16	<b>1st</b>
Rain Forest Challenge	Kelantan	Nov 2019	35	CL18M 35X10.50-16	<b>2nd</b>



Rim	Size	Load./SpeedRating	Approved Rim Width (in)	Max Load (kg)	Max Pressure (PSI)
16	35X10.50-16 6PR	108K*	8.0-(8.0)-9.0	1000	28

\*POR = Professional off-road tire exempt from EU Labelling regulation



# LAND DRAGON CL18



**Champion's tire for the 2020  
Rain Forest Challenge  
South Europe stage**



## Great for off-road adventure

- 3D block design and aggressive tread pattern delivers outstanding performance in off-road conditions
- Armoured shoulder and wide grooves improve traction during transitions between different terrains
- The special pattern design in the shoulder area optimises water and mud dispersal
- Extended shoulders provide rim protection
- Specially developed compound delivers outstanding durability and cutting resistance in hazardous terrain

## AVAILABLE SIZES

Rim	Size	Load./SpeedRating	Approved Rim Width (in)	Max Load (kg)	Max Pressure (PSI)
15	33X11.50-15 6PR	115K*	8.5-(9.0)-9.5	1215	45
	35X12.50-15 6PR	113K*	9.5-(10.0)-10.5	1150	30
	38X12.50-15 6PR	115K*	9.5-(10.0)-10.5	1215	45
16	31X10.50-16 6PR	109K*	7.0 -(7.0)- 9.0	1030	45
	33X10.50-16 6PR	114K*	7.0- (7.0)- 9.0	1180	45
	35X10.50-16 6PR	119K*	7.0 -(7.0)- 9.0	1360	45
	36X12.50-16 6PR	112K*	9.5-(10.0)-10.5	1120	30

\*POR = Professional off-road tire exempt from EU Labelling regulation



EXTREME MUD TERRAIN

# C888



## Makes tough terrain look easy

A strong and transverse pattern design is what gives the C888 great traction. This pattern also creates the ability to release water and mud easier, giving it more grip and traction

- Wide middle groove disperses water efficiently
- Convex strip for efficient release of mud and debris
- Quadrate shoulders for ultimate traction



Rim	Size	Load./SpeedRating	Approved Rim Width (in)	Max Load (kg)	Max Pressure (PSI)
15	31X10.50-15 6PR	110K*	8.0-(8.5)-9.0	1060	45

\*POR = Professional off-road tire exempt from EU Labelling regulation



**NEW**

# VOYAGE VA76



**4X4** – Take the scenic route with confidence



Rim	Size	Load./SpeedRating	Approved Rim Width (in)	Max Load (kg)	Max Pressure (PSI)
16	7.50R16 8PR	114/112S	5.5-(6.0)-6.5	1180	69





Mixed pattern design provides excellent stability and avoids irregular wear in hazardous road conditions

Lug-grooves on tire shoulders give extra traction

Zigzag grooves design offers outstanding traction and water dispersal



**EXCELLENT DURABILITY**



**PERFECT LOADING CAPACITY**



**OUTSTANDING WATER DISPERSAL**







**CST**®

**WHERE PASSION  
MEETS THE GROUND**

**PERFORMANCE**







NEW

# ADRENO AD-R9

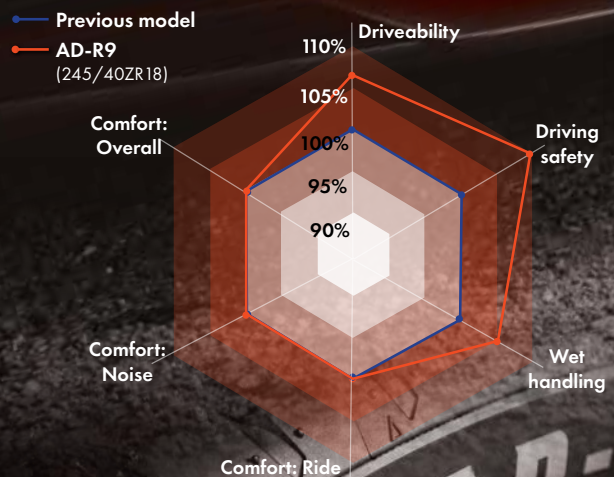
A new level in  
sports performance

New pattern designed to deliver better handling at high speeds

- Full-silica tread compound for excellent wet and dry grip
- 3+1 circumferential grooves reduce aquaplaning and noise
- 〰 Special curved tread for better water dispersal
- ▲ Closed shoulder design reduces noise levels

New steel belt construction absorbs impact, providing more comfort

## AD-R9 PERFORMANCE CHARACTERISTICS



**ST = Suede Touch**



Outstanding appearance with new "Suede Touch" sidewall technology.





IMPRESSIVE HANDLING



REDUCED AQUAPLANING



SHORT BRAKING DISTANCES



INCREASED COMFORT



MINIMAL TIRE NOISE

'A' RATED FOR WET GRIP

**AVAILABLE SIZES**  
**AD-R9**

Rim/Aspect Ratio	Size	Load./SpeedRating	Approved Rim Width (in)	RR	WG	dB	
18	40	225/40ZR18	92W XL	7.5-(8.0)-8.5	C	A	B 71
		225/40ZR18	92Y XL	7.5-(8.0)-8.5	C	A	B 71
		245/40ZR18	97Y XL	8.0-(8.5)-9.0	C	A	B 71
	45	225/45ZR18	95W XL	7.0-(7.5)-8.0	C	A	B 71
		225/45ZR18	95Y XL	7.0-(7.5)-8.0	C	A	B 71
		235/45ZR18	98W XL	7.5-(8.0)-8.5	C	A	B 71
		235/45ZR18	98Y XL	7.5-(8.0)-8.5	C	A	B 71
		245/45ZR18	100W XL	7.5-(8.0)-8.5	C	A	B 71
245/45ZR18	100Y XL	7.5-(8.0)-8.5	C	A	B 71		
19	40	245/40ZR19	98Y XL	8.0-(8.5)-9.0	C	A	B 71
		255/40ZR19	100Y XL	8.5-(9.0)-9.5	C	A	B 71
	45	225/45ZR19	92W	7.0-(7.5)-8.0	C	A	B 71
		225/45ZR19	96Y XL	7.0-(7.5)-8.0	C	A	B 71
		245/45ZR19	102Y XL	7.5-(8.0)-8.5	C	A	B 71

**AVAILABLE SIZES**  
**AD-R9 SUV**

Rim/Aspect Ratio	Size	Load./SpeedRating	Approved Rim Width (in)	RR	WG	dB	
18	50	235/50ZR18	101W XL	6.5-(7.5)-8.5	C	A	B 71
	60	235/60ZR18	107W XL	6.5-(7.0)-8.5	B	B	B 71
		245/60R18	105V	7.0-(7.0)-8.5	C	B	B 71
19	45	235/45ZR19	95Y	7.5-(8.0)-8.5	C	A	B 71
	50	235/50ZR19	99W	6.5-(7.5)-8.5	C	A	B 71
		255/50ZR19	107Y XL	7.0-(8.0)-9.0	C	A	B 71
	55	225/55R19	99V	6.5-(7.0)-7.5	C	A	B 71
		235/55ZR19	101Y	6.5-(7.5)-8.5	C	A	B 71
		245/55R19	103V	7.0-(7.5)-8.5	C	A	B 71
		255/55R19	107V	7.0-(8.0)-9.0	C	A	B 71
20	45	245/45ZR20	103Y XL	7.5-(8.0)-9.0	C	A	B 71
		255/45ZR20	105W XL	8.0-(8.5)-9.5	C	A	B 71
	50	255/50ZR20	109Y XL	7.0-(8.0)-9.0	C	A	B 71
	55	235/55ZR20	105W XL	6.5-(7.5)-8.5	B	A	B 71

**ST**  
**ST**

UTQG rating 280 AA A



# ADRENO AD-R8

## The pinnacle of performance

The Adreno H/P Sport AD-R8 is an ultra-high-performance tire designed for premium and sport SUVs, featuring a high-rigidity tread pattern designed to provide straight-line stability and better handling at high speed without compromising on comfort.

The high-silica compound increases wet braking capability and shortens braking distances in wet conditions. With the closed outer grooves and wave grooved wall, resonance and noise are reduced to a minimum.



### EXCELLENT HIGH-SPEED HANDLING AND STABILITY

- High-rigidity central ribs improve straight-line acceleration and handling at high speed

Enhanced tire body structure provides great stability at higher speeds

### OUTSTANDING BRAKING ABILITY ON WET SURFACES FOR EXTRA SAFETY

- Tread surface with 3+1 circumferential grooves minimises risk of aquaplaning
- High-silica compound improves wet braking results, shortening braking distances in wet conditions

### REDUCED TIRE NOISE AND RESONANCE

- ▲ Outer closed groove design reduces noise for a quieter ride
- 〰 Waved groove wall reduces air vibrations





EXCELLENT HANDLING AND STABILITY



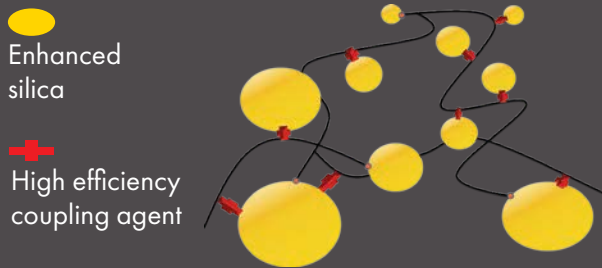
OUTSTANDING WET BRAKING



A QUIETER DRIVING EXPERIENCE

## AD-R8 COMPOUND TECHNOLOGY

Utilising the latest generation of enhanced silica, combined with a sophisticated rubber compound and a high-efficiency coupling agent, provides a perfect balance of performance between traction and tread life without sacrificing excellence in handling



## AVAILABLE SIZES

Rim/Aspect Ratio	Size	Load./SpeedRating	Approved Rim Width (in)	RR	WG	dB
17	60	255/60R17 106V	7.0-(7.5)-9.0	D	B	B 72
	65	225/65R17 102V	6.0-(6.5)-8.0	C	B	B 71
18	55	255/55ZR18 109W XL	7.0-(8.0)-9.0	C	B	B 73
	60	255/60R18 112V XL	7.0-(7.5)-9.0	C	B	B 73
		265/60R18 110V	7.5-(8.0)-9.5	C	B	B 72
		285/60R18 120V XL	8.0-(8.5)-10.0	C	B	B 73
	65	235/65R18 106V	6.5-(7.0)-7.5	D	B	B 71
20	40	275/40ZR20 106W XL	9.0-(9.5)-11.0	C	B	B 73
	45	275/45ZR20 110W XL	8.5-(9.0)-10.5	C	B	B 73
	50	245/50ZR20 102W	7.0-(7.5)-8.5	D	B	B 71
		265/50ZR20 111W XL	7.5-(8.5)-9.5	C	B	B 73
		275/50ZR20 109W	7.5-(8.5)-9.5	C	B	B 72
		285/50R20 116V XL	8.0-(9.0)-10.0	C	B	B 73
		305/50R20 120V XL	8.5-(9.5)-11.0	C	B	B 73
	55	255/55ZR20 110W XL	7.0-(8.0)-9.0	C	B	B 73
275/55R20 117V XL		7.5-(8.5)-9.5	C	B	B 73	

UTQG rating 280 AA A



**CST**®

**WHERE PASSION  
MEETS THE GROUND**

**TOURING**











OUTSTANDING HANDLING AND BRAKING



A PEACEFUL DRIVE



COMFORTABLE DRIVING EXPERIENCE

**NEW**

# MEDALLION MD-A7



## Engineered for performance

Special sipes design improves the mechanics of motion fluidity to optimise smoother driving stability at high speeds

New shock-absorbing technology provides optimal comfort for an enjoyable journey

New groove design with closed-shoulders lowers air vibration and noise resonance for a quiet ride

Advanced full-silica tread compound and special pattern design with curve tread improve water dispersal in wet conditions for a remarkable wet braking and safety





# AVAILABLE SIZES MD-A7



**STI = Suede Touch**



Outstanding appearance with new "Suede Touch" sidewall technology.

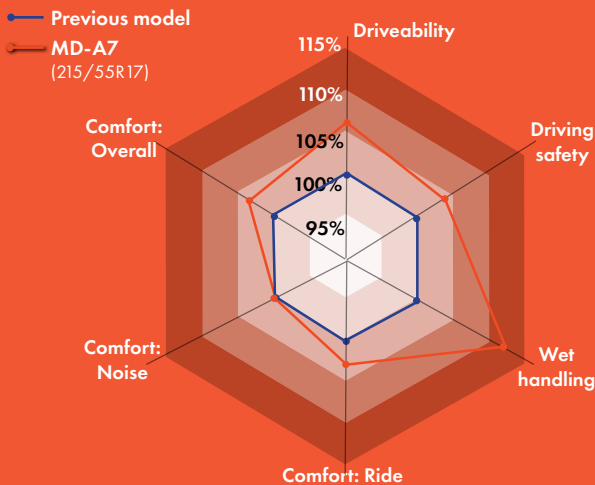
Rim/Aspect Ratio	Size	Load./SpeedRating	Approved Rim Width (in)	RR	WG	dB	
16	55	195/55 R16	91V XL	5.5-(6.0)-7.0	C	A	A 68
		205/55R16	91V	5.5-(6.5)-7.5	C	A	A 68
		205/55 ZR16	91W	5.5-(6.5)-7.5	C	A	A 68
		205/55 ZR16	94W XL	5.5-(6.5)-7.5	C	A	A 68
		215/55 R16	97V XL	6.0-(7.0)-7.5	C	A	A 68
	60	205/60 R16	96V XL	5.5-(6.0)-7.5	C	A	A 68
		215/60 R16	99V XL	6.0-(6.5)-7.5	C	A	A 68
17	50	205/50 ZR17	93W XL	5.5-(6.5)-7.5	C	A	A 68
		215/50 ZR17	95W XL	6.0-(7.0)-7.5	C	A	A 68
		225/50 ZR17	98W XL	6.0-(7.0)-8.0	C	A	A 68
	55	205/55 ZR17	95W XL	5.5-(6.5)-7.5	C	A	A 68
		225/55 ZR17	101W XL	6.0-(7.0)-8.0	C	A	A 68

# MD-A7 SUV

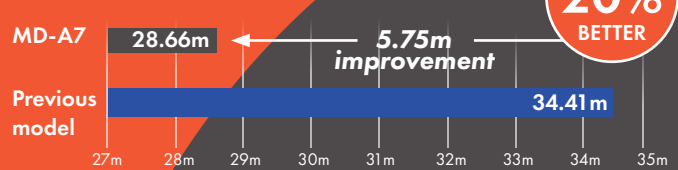
Rim/Aspect Ratio	Size	Load./SpeedRating	Approved Rim Width (in)	RR	WG	dB
16	65	215/65 R16	102H XL	6.0-(6.5)-7.5	C	A A 68
17	55	235/55 ZR17	103W XL	7.0-(7.5)-8.0	C	A A 68
		215/60 R17	96V	6.0-(6.5)-7.5	C	A A 68
	60	225/60 R17	99V	6.0-(6.5)-8.0	C	A A 68
		215/65 R17	99V	6.0-(6.5)-7.5	C	A A 68
		235/65 R17	108V XL	6.5-(7.0)-8.5	C	A A 68
18	55	215/55 R18	99V XL	6.0-(7.0)-7.5	C	A A 68
		225/55 R18	98V	6.0-(7.0)-8.0	C	A A 68
		235/55 ZR18	100W	6.5-(7.5)-8.5	C	A A 68
	60	225/60 R18	104V XL	6.0-(6.5)-8.0	C	A A 68

UTQG rating 320 AA A

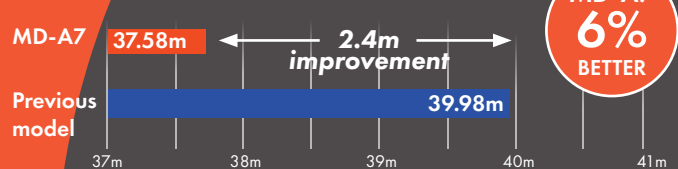
## MD-A7 PERFORMANCE CHARACTERISTICS



## WET BRAKING PERFORMANCE



## DRY BRAKING PERFORMANCE





# MEDALLION MD-A1

## Comfort and safety in harmony

The Medallion MD-A1 is designed for premium cars, delivering great comfort, a quiet ride and excellent driving pleasure.

Noise and vibrations are reduced through the lateral grooves and special pattern design, featuring closed-shoulder grooves to reduce noise and resonance.

High-silica compound technology provides excellent handling and wet braking capability while also delivering great fuel efficiency.

Special sipes within the tread and shoulder absorb impact from the road surface for a comfortable ride.



- Central rib enhances tire rigidity, providing extra stability and a safer drive
- Closed-shoulder groove design reduces noise and resonance
- Special pitch arrangement designed to further reduce noise from air vibration
- Multiple lateral grooves reduce air vibration resulting in less noise and a quieter drive
- Double-angled shoulder grooves improve water dispersal and reduce the risk of aquaplaning
- Special sipes design on tread and shoulder to absorb impact from road surface for a comfortable ride







OUTSTANDING  
HANDLING AND  
BRAKING



A PEACEFUL DRIVE



COMFORTABLE  
DRIVING  
EXPERIENCE



# AVAILABLE SIZES

Rim/Aspect Ratio	Size	Load./SpeedRating	Approved Rim Width (in)	RR	WG	dB		
15	50	165/50R15	73V	4.5-(5.0)-5.5	-	-	-	
		195/50R15	86V XL	5.5-(6.0)-6.5	C	B	B 71	
16	45	165/45R16	74V XL	5.0-(5.5)-6.0	-	-	-	
		195/45R16	84V XL	6.0-(6.5)-7.5	C	B	B 71	
		205/45ZR16	87W XL	6.5-(7.0)-7.5	C	B	B 71	
		215/45R16	90V XL	7.0-(7.0)-8.0	C	B	B 71	
		195/50R16	88V XL	5.5-(6.0)-7.0	C	B	B 71	
	50	205/50ZR16	91W XL	5.5-(6.5)-7.5	C	B	B 71	
		225/50R16	92V	6.0-(7.0)-8.0	C	B	B 71	
		55	185/55R16	83V	5.0-(6.0)-6.5	C	B	B 71
			195/55R16	87V	5.5-(6.0)-7.0	C	B	B 71
			225/55R16	95V	6.0-(7.0)-8.0	C	B	B 71
60	195/60R16	89V	5.5-(6.0)-6.5	C	B	B 71		
	225/60R16	98V	6.0-(6.5)-8.0	C	B	B 71		
17	45	195/45R17	85W XL	6.0-(6.5)-7.5	C	B	B 71	
		205/45ZR17	88Y XL	6.0-(6.5)-7.0	C	B	B 71	
		215/45ZR17	91W XL	7.0-(7.0)-8.0	C	B	B 71	
		225/45ZR17	94W XL	7.0-(7.5)-8.5	C	B	B 71	
		225/45ZR17	94Y XL	7.0-(7.5)-8.5	C	B	B 71	
		235/45ZR17	97W XL	7.5-(8.0)-8.5	C	B	B 71	
		245/45ZR17	99W XL	7.5-(8.0)-9.0	C	B	B 71	
		50	235/50ZR17	96W	6.5-(7.5)-8.5	C	B	B 71
	55	215/55ZR17	98W XL	6.0-(7.0)-7.5	C	B	B 71	
	18	40	245/40ZR18	97W XL	8.0-(8.5)-9.0	C	B	B 71
45			215/45ZR18	93Y XL	6.5-(7.0)-7.5	C	B	B 71
			225/50ZR18	99W XL	6.5-(7.0)-7.5	C	B	B 71
50		225/50ZR18	99Y XL	6.5-(7.0)-7.5	C	B	B 71	
		235/50ZR18	101Y XL	6.5-(7.5)-8.5	C	B	B 71	
19	35	235/35ZR19	91W XL	8.0-(8.5)-9.0	C	B	B 71	
		235/35ZR19	91Y XL	8.0-(8.5)-9.0	C	B	B 71	

NEW

NEW

NEW

NEW

NEW

NEW

UTQG rating 320 A A



# MEDALLION MD-S1



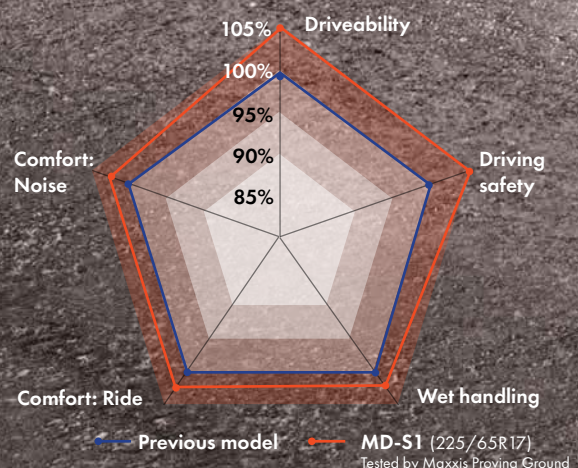
## A better SUV driving experience

The Medallion MD-S1 is designed for premium SUVs, and to deliver great comfort, low noise levels and excellent driving quality.

Noise and vibration are reduced through the central rib pattern design and the bridging of lateral grooves, delivering safety and comfort at higher speeds.

Inverted-angled sipes in the central tread area deliver improved and the four circumferential grooves disperse water efficiently.

### MD-S1 PERFORMANCE CHARACTERISTICS







### OUTSTANDING HANDLING & BRAKING

- Inverted-angled pattern design improves the tire's rigidity and enhances handling performance
- Four main circumferential grooves improve wet grip with efficient water dispersal



### IMPRESSIVE FUEL EFFICIENCY

- Specially advanced compound technology delivers vastly improved fuel efficiency

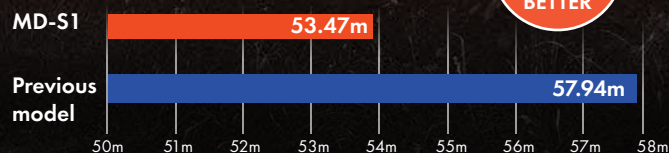


### EXCELLENT QUIETNESS

- Bridged lateral grooves at the shoulder increases tire rigidity and reduces tread pattern noise
- Central rib pattern is designed to reduce pattern noise and deliver exceptional all-round performance, especially at higher speeds



### WET BRAKING PERFORMANCE



MD-S1  
7%  
BETTER

# AVAILABLE SIZES

Rim/Aspect Ratio	Size	Load./SpeedRating	Approved Rim Width (in)	Max Load (kg)	Max Pressure (PSI)
15	70 205/70R15	96H	5.0-(6.0)-7.0	300	44
	65 215/65R16	102H XL	6.0-(6.5)-7.5	340	50
16	70 215/70R16	100H	5.5-(6.5)-7.0	300	44
	55 215/55R17	98V XL	6.0-(7.0)-7.5	340	50
17	55 235/55R17	99V	6.5-(7.5)-8.5	300	44
	60 215/60R17	96H	6.0-(6.5)-7.5	300	44
	60 225/60R17	99H	6.0-(6.5)-8.0	300	44
	60 235/60R17	102H	6.5-(7.0)-8.5	300	44
	65 215/65R17	99V	6.0-(6.5)-7.5	300	44
	65 225/65R17	102H	6.0-(6.5)-8.0	300	44
	65 235/65R17	108V XL	6.5-(7.0)-8.5	340	50
	65 265/65R17	112H	7.5-(8.0)-9.5	300	44
18	55 215/55R18	95H	6.0-(7.0)-7.5	300	44
	55 225/55R18	98V	6.0-(7.0)-8.0	300	44
	55 235/55R18	100V	6.5-(7.5)-8.5	300	44
	60 225/60R18	100H	6.0-(6.5)-8.0	300	44
	60 235/60R18	103V	6.5-(7.0)-8.5	300	44

UTQG rating 560 A A



NEW

# MARQUIS MR-C5

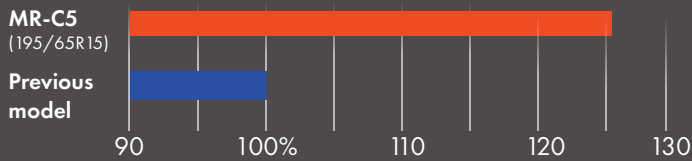
## First choice for long-lasting durability

The new Marquis MR-C5 is the tire of the moment; designed to be kinder on the environment as well as your pocket, it's a tire that delivers long life, improved durability and economical performance at an affordable price.

Especially designed to provide an optimised tire footprint means the MR-C5 avoids irregular wear for longer mileage, while also delivering high levels of safety and stability. With lower noise levels to enhance comfort, the MR-C5 is an obvious choice when selecting for all-round performance.

### MILEAGE SIMULATION TEST (by Maxxis Proving Ground)

**20% BETTER MILEAGE PERFORMANCE**



Central rib pattern design enhances high-speed stability and delivers a comfortable ride

Closed shoulder design reduces air vibrations, and the special grooved angle in the tire shoulder tread reduces road impact to minimise tire noise



KINDER TO THE ENVIRONMENT



A PEACEFUL DRIVE



LONGER LIFESPAN





Optimised tire footprint engineered to avoid irregular wear for longer mileage and improved durability

Closed shoulder design reduces air vibration to minimise tire noise

Special grooved angle in the tire shoulder reduces road impact for Lower noise emission

Central rib pattern design enhances high-speed stability and delivers a comfortable ride

Highly rigid structure and a new profile design provides excellent stability under high-speed conditions



# AVAILABLE SIZES

Rim/Aspect Ratio	Size	Load./SpeedRating	Approved Rim Width (in)	Max Load (kg)	Max Pressure (PSI)
13	70	175/70R13 82T	4.5-(5.0)-6.0	475	44
	14	60	165/60R14 75H	4.5-(5.0)-6.0	387
65		185/60R14 82H	5.0-(5.5)-6.5	475	44
		175/65R14 82H	5.0-(5.5)-6.0	475	44
15	70	185/65R14 86H	5.0-(5.5)-6.5	530	44
		175/70R14 84H	4.5-(5.0)-6.0	500	44
	60	185/70R14 88H	4.5-(5.5)-6.0	560	44
		185/55R15 82H	5.0-(6.0)-6.5	475	44
		195/55R15 85V	5.5-(6.0)-7.0	515	44
		185/60R15 84H	5.0-(5.5)-6.5	500	44
65	195/60R15 88H	5.5-(6.0)-7.0	560	44	
	185/65R15 88H	5.0-(5.5)-6.5	560	44	
	195/65R15 91H	5.5-(6.0)-7.0	615	44	
16	55	205/65R15 94V	5.5-(6.0)-7.5	670	44
		205/55R16 91V	5.5-(6.5)-7.5	615	44
	60	195/60R16 89H	5.5-(6.0)-7.0	580	44
		205/60R16 92V	5.5-(6.0)-7.5	630	44

UTQG rating 500 A A





## Spend less time at the pumps with the MR61

The Marquis MR61 is the tire of choice for reliability and all-round performance.

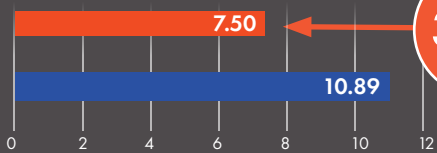
High-silica compound delivers great fuel efficiency and impressive braking ability.

Asymmetrical inner and outer shoulder design provides a better contact area for excellent grip.

Special pattern design to optimise contact area, preventing uneven wear for a durable tire.

### ROLLING RESISTANCE

MR61  
(195/65R15)  
Previous model



MR61  
31%  
BETTER



### EXCELLENT FUEL EFFICIENCY

- High-silica compound delivers low rolling resistance for high fuel efficiency
- Special rib design lowers the road impact for improved energy saving



### ENHANCED HANDLING AND SAFETY

- Asymmetrical inner and outer shoulder design provides a better contact area for superb grip
- Off-centre central ribs improve handling performance on differing road conditions
- The inner shoulder's close pitch design provides great water dispersion




### A LONG-LASTING TIRE

- Three main grooves provide enhanced contact for prolonged mileage
- Special pattern design optimises the contact area to prevent uneven wear



# MARQUIS MR61

AVAILABLE SIZES



Rim/Aspect Ratio	Size	Load./SpeedRating	Approved Rim Width (in)	RR	WG	dB	
13	65	155/65R13	73T	4.5-(4.5)-5.5	C	B	B 70
	70	155/70R13	75T	4.0-(4.5)-5.5	C	B	B 70
		165/70R13	79T	4.0-(5.0)-5.5	C	B	B 70
		175/70R13	82T	4.5-(5.0)-6.0	C	B	B 70
		185/70R13	86H	4.5-(5.5)-6.0	C	B	B 70
	80	145/80R13	75T	3.5-(4.0)-5.4	-	-	-
	155/80R13	79T	4.0-(4.5)-5.0	C	B	B 70	
14	55	165/55R14	72V	4.5-(5.0)-5.5	-	-	-
	60	165/60R14	75H	4.5-(5.0)-6.0	C	B	B 70
		175/60R14	79H	5.0-(5.5)-6.0	C	B	B 70
		185/60R14	82H	5.0-(5.5)-6.5	C	B	B 70
		205/60R14	88H	5.5-(6.0)-6.5	C	B	B 70
	65	155/65R14	75T	4.5-(4.5)-5.5	C	B	B 70
		165/65R14	83H XL	4.5-(5.0)-6.0	C	B	B 70
		175/65R14	82H	5.0-(5.0)-6.0	C	B	B 70
		185/65R14	86H	5.0-(5.5)-6.5	C	B	B 70
		195/65R14	89H	5.5-(6.0)-7.0	C	B	B 70
	70	165/70R14	81T	4.0-(5.0)-5.5	C	B	B 70
		175/70R14	84H	4.5-(5.0)-6.0	C	B	B 70
		175/70R14	88H XL	4.5-(5.0)-6.0	C	B	B 70
		185/70R14	88T	4.5-(5.5)-6.0	C	B	B 70
		185/70R14	88H	4.5-(5.5)-6.0	C	B	B 70
		195/70R14	91H	5.0-(6.0)-6.5	C	B	B 70
		205/70R14	98H XL	5.0-(6.0)-7.0	C	B	B 70
	15	55	165/55R15	75V	4.5-(5.0)-5.5	-	-
175/55R15			77T	5.0-(5.5)-6.0	C	B	B 70
185/55R15			82H	5.5-(6.0)-6.5	C	B	B 70
185/55R15			86V XL	5.5-(6.0)-6.5	C	B	B 70
195/55R15			85V	5.5-(6.0)-7.0	C	B	B 70
60		175/60R15	81H	5.0-(5.0)-6.0	C	B	B 70
		185/60R15	84H	5.0-(5.5)-6.5	C	B	B 70
		185/60R15	88H XL	5.0-(5.5)-6.5	C	B	B 70
		195/60R15	88V	5.5-(6.0)-7.0	C	B	B 70
		205/60R15	91V	5.5-(6.0)-7.5	C	B	B 70
		225/60R15	96H	6.0-(6.5)-8.0	C	B	B 70
		205/60R15	96H	6.0-(6.5)-8.0	C	B	B 70
65		175/65R15	84H	5.0-(5.5)-6.0	C	B	B 70
		185/65R15	88H	5.0-(5.5)-6.5	C	B	B 70
		185/65R15	92H XL	5.0-(5.5)-6.5	C	B	B 70
		195/65R15	91V	5.5-(6.0)-7.0	C	B	B 70
		205/65R15	94V	5.5-(6.0)-7.5	C	B	B 70
		215/65R15	100H XL	6.0-(6.5)-7.5	C	B	B 70

NEW

UTQG rating 400 A A





**CST**®

**WHERE PASSION  
MEETS THE GROUND**



**COMMERCIAL**







# VAN MASTER

## VR36

### Safety and reliability whatever the load

The Van Master is designed with safety in mind, so whether you're transporting a load or driving your family from place to place, the VR36 is the tyre for you. The three central lateral grooves help to disperse water efficiently, while rib-type shoulder blocks increase wear resistance while reducing rolling resistance and noise.

Rim/Aspect Ratio	Size	Load./SpeedRating	Approved Rim Width (in)	Max Load (kg)	Max Pressure (PSI)	RR	WG	dB
14	80	185R14C	102/100R	5.0-(5.5)-6.0	S850/D800	65	C A	B 72
		195R14C	106/104R	5.0-(5.5)-6.0	S950/D900	65	C A	B 72
16	65	195/65R16C	104/102T	5.5-(6.0)-6.0	S900/D850	69	C A	B 72
		205/65R16C	107/105T	5.5-(6.0)-6.5	S975/D925	69	C A	B 72
		215/65R16C	109/107T	6.0-(6.5)-7.0	S1030/D975	69	C A	B 72
		225/65R16C	112/110T	6.0-(6.5)-7.0	S1120/D1060	69	C A	B 72
		235/65R16C	115/113R	6.5-(7.0)-7.5	S1215/D1150	69	C A	B 72



LONG TREAD LIFE



IMPROVED DURABILITY



GREAT HANDLING

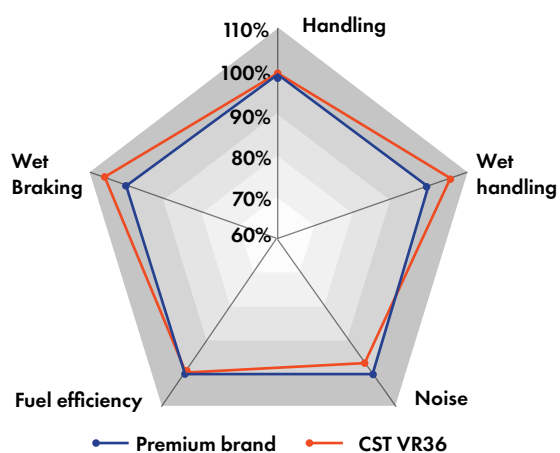




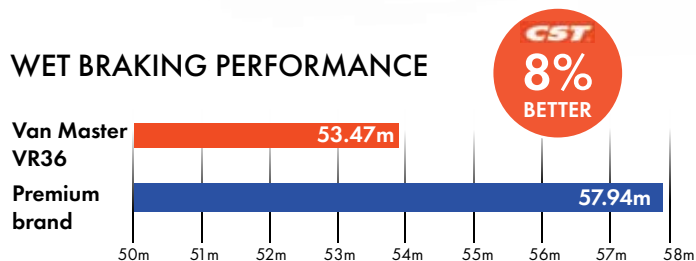
- New tread compound for longer lasting tires
- Advanced pattern designs prevent uneven wear and offer greater cutting resistance for improved durability
- Closed lateral shoulder grooves improve shoulder wear properties
- Highly rigid straight ribs offer good braking traction and an ideal contact area for straight-line stability
- The three main central lateral grooves help to disperse water efficiently for better handling on wet surfaces



**VR36 PERFORMANCE CHARACTERISTICS**



**WET BRAKING PERFORMANCE**







# CL31

Using an enhanced sidewall structure for a higher load capacity, the CL31 is a true transporter tyre. With a combination of an advanced casing structure and an excellent wear-resistant compound, the CL31 is made to be the ultimate option for any van or light truck.

Rim	Size	Load./SpeedRating	Approved Rim Width (in)	Max Load (kg)	Max Pressure (PSI)	RR	WG	dB
12	LT 5.00R12 8PR	83/81P	3.0-(3.5)-4.0	S485/D465	65	D	B	B 72
	LT 5.00R12 10PR	88/86P	3.0-(3.5)-4.0	S560/D530	75	-	-	-
13	LT 5.50R13 12PR	97/95P	(4.0)-4.5	S730/D690	97	D	B	B 72
	155R13C 8PR	91/89R	4.5-(4.5)-5.0	S615/D580	65	D	B	B 72
	165R13C 8PR	94/93N	4.5-(4.5)-5.0	S670/D650	65	D	B	B 72
	165/70R13C 6PR	88/86S	4.0-(5.0)-5.5	S560/D530	54	D	B	B 72
	175R13C 8PR	97/95N	4.5-(5.0)-5.5	S730/D690	65	D	B	B 72
14	175/70R14C 6PR	95/93S	4.5-(5.0)-5.5	S690/D650	54	D	B	B 72
	175/70R14C 8PR	99/98N	4.5-(5.0)-6.0	S775/D750	65	D	B	B 72
	175/75R14C 8PR	99/98S	4.5-(5.0)-5.5	S775/D750	69	D	B	B 72
	215/75 R14C 8PR	112/110Q	5.5-(6.0)-7	S1120/D1060	69	D	B	B 72
	6.50R14C 8PR	102/100N	(4.5)-5.0	S850/D800	65	D	B	B 72
	165R14C 8PR	97/95R	4.5-(5.0)-5.0	S730/D690	65	D	B	B 72
	175R14C 8PR	99/98N	4.5-(5.0)-5.5	S775/D750	65	D	B	B 72
	185R14C 8PR	102/100R	4.5-(5.5)-6.0	S850/D800	65	D	B	B 72
	195R14C 8PR	106/104R	5.0-(5.5)-6.0	S950/D900	65	D	B	B 72
	205R14C 8PR	109/107Q	5.0-(6.0)-6.5	S1030/D975	65	D	B	B 72
15	195/70R15C 8PR	104/102S	5.0-(6.0)-6.0	S900/D850	65	D	B	B 72
	205/70R15C 8PR	106/104R	5.5-(6.0)-6.5	S950/D900	65	D	B	B 72
	215/70R15C 8PR	109/107Q	5.5-(6.5)-7.0	S1030/D975	65	D	B	B 72
	225/70R15C 8PR	112/110Q	6.0-(6.5)-7.0	S1120/D1060	69	D	B	B 72
	225/70R15C 8PR*	112/110Q	6.0-(6.5)-7.0	S1120/D1060	69	D	B	B 72
	185R15C 8PR	103/102Q	5.0-(5.5)-6.0	S875/D850	65	D	B	B 72
	195R15C 8PR	106/104R	5.0-(5.5)-6.0	S950/D900	65	D	B	B 72
	195R15C 8PR*	106/104R	5.0-(5.5)-6.0	S950/D900	65	D	B	B 72
16	215/65R16C 8PR	109/107Q	6.0-(6.5)-7.0	S1030/D975	69	-	-	-
	195/75R16C 8PR	107/105R	5.0-(5.5)-6.5	S975/D925	69	D	B	B 72
	195/75R16C 10PR	110/108R	5.0-(5.5)-6.0	S1060/D1000	75	D	B	B 72
	205R16C 8PR	110/108Q	5.5-(6.5)-7.0	S1060/D1000	65	D	B	B 72
	215/75R16C 8PR	113/111R	5.5-(6.0)-7.0	S1150/D1090	69	D	B	B 72
	215/75R16C 10PR	116/114R	5.5-(6.0)-7.0	S1250/D1180	69	D	B	B 72
	LT235/85R16 10PR	120/116Q	6.0-(6.5)-7.5	S1380/D1260	81	D	B	B 72



**EXCELLENT DURABILITY**



**IMPRESSIVE LOADING CAPACITY**

\*Raised white wall



# CS105

The CS105 is everything you would look for in a van or light truck tyre. Developed to be long lasting and heavy-load bearing, you'll be able to carry whatever you want wherever you need to go.

Rim	Size	Load./SpeedRating	Approved Rim Width (in)	Max Load (kg)	Max Pressure (PSI)
15	6.50R15 10PR TT/TL	106/101N	(5.5)-6.0	S950/D825	81
	7.00R15 12PR TT/TL	113/109N	(5.5)-6.0	S1150/D1030	97
16	6.50R16 10PR TT/TL	107/102N	5.0-(5.5)	S975/D850	81
	6.50R16 12PR TT/TL	110/105N	5.0-(5.5)	S1060/D925	97
	7.00R16 12PR TT/TL	115/110N	(5.5)-6.0	S1215/D1060	97
	7.50R16 12PR TT/TL	121/120N	5.5-(6.0)-6.5	S1450/D1400	97

# CLO2

With its advanced pattern design featuring three main zigzagging grooves and high-rigidity steel belt construction, the CLO2 is engineered to make light work of heavy loads and deliver the traction, stability and durability you need. A new tread compound combines with the tread design to provide long life and greater cutting resistance.



LONG TREAD LIFE



IMPROVED DURABILITY

Rim	Size	Load./SpeedRating	Approved Rim Width (in)	Max Load (kg)	Max Pressure (PSI)	RR	WG	dB
12	140/70R12C 6PR	86J	4.0	530	62	C	C	B 72
	125R12	62S	3.5	265	44	-	-	-
	125R12C 8PR	81J	3.5	265	44	C	C	B 72
	145R12C 6PR	80/78N	4.0	450/425	50	C	C	B 72
	145R12C 8PR	86/84N	4.0	530/500	65	C	C	B 72
	155R12C 8PR	88/86R	4.0-(4.5)-5.0	560/530	65	C	C	B 72



# TIRE SAFETY

## Important tire information

When customers choose CST, they're getting a product designed to deliver safety along with performance. But even the best tires must be used with caution and with close attention to safe practices. Following the guidelines and recommendations below will help to reduce the chance of accident or injury.

## Always refer to the vehicle's tire information placard.

- It is preferable to replace a vehicle's tires with ones that correspond to the vehicle's manufacturer-recommended specifications.
- Tire speed ratings and load-carrying capacity should always be equal to or greater than the original equipment tires.

## Service Description

Most tires have a service description that appears at the end of the tire size. This service description has a two-digit number which represents the load index, and a letter which represents the speed rating.

**Example:** 86H. The load index represents the maximum load each tire is designed to carry at the tire's maximum inflation pressure.

## Speed Rating

Speed ratings are certified sustained speed designations assigned to passenger car radials and high performance tires. In the U.S., these ratings are based on tire testing in laboratory conditions under simulated loads. For a tire to be speed-rated, it must meet certain minimum government standards for reaching and maintaining that specified speed. Any speed symbol denoting a fixed maximum speed capability will be at the end of the service description following the load index. Tire installers should refer to the vehicle's owner's manual to identify any tire speed rating restriction or recommendation that could affect the operation of the vehicle. If the replacement tires have a lower speed rating than what is specified as original equipment, the consumer should be aware that the vehicle's speed must be restricted to that of the replacement tires. CST does not recommend mixing tires of different speed ratings on a vehicle.

**Note:** Speed ratings apply only to the tire, not to the vehicle. Putting speed-rated tires on any vehicle does not mean that the vehicle can be operated at the tire's rated speed. Refer to the vehicle's operating manual for specific information.

## Ply Rating vs. Load Range

- Ply ratings and load ranges denote the load capability and inflation limits of a given tire size when used in a specified type of service.
- **Ply Rating:** An older method of rating load capacity. These are shown as 4-ply rated, 6-ply rated, 8-ply rated, etc.
- **Load Range:** This is the current method of rating the tire's load-carrying capacity and is denoted by letters: B, C, D, E, etc.

## Uniform Tire Quality Grade (UTQG)

The UTQG, which is required by the government, provides comparative manufacturer information. Tires are subjected to a series of government-mandated tests that measure performance of treadwear, traction and temperature resistance. All testing is done by the individual manufacturer.

- **Treadwear:** A measurement of tread durability. Tested against an industry standard, the assigned numerical grade indicates how well the tread lasts compared to a reference of 100. Actual wear depends on the conditions under which the tire is used. Driving habits, vehicle maintenance, road surface differences and climate variations all affect treadwear.
- **Traction:** A measurement of the tire's ability to stop on wet test surfaces of asphalt and concrete under controlled conditions. Traction grades are assigned by the UTQG system and branded on the sidewall of the tire. The traction grade is determined only for straight-ahead wet braking. It does not include cornering, which might be important for customer performance needs.
- **Temperature (resistance):** a measure of resistance to heat generation under normal operating conditions. The test is conducted under predetermined standards for inflation and loading. Excessive speed, under-inflation and overloading can all cause adverse heat build-up. Sustained high temperatures can reduce tire durability. Temperature grades are branded on the sidewall of the tire.

## DOT (Department of Transportation) Certification

A DOT brand on the tire's sidewall indicates that the tire has been certified by the Department of Transportation. Following the DOT brand is a serial number that denotes the tire's manufacturer, the manufacturing plant, tire size code and date of manufacture. While consumer tire registration is voluntary, federal law requires that the selling dealer record the DOT identification numbers and provide the DOT registration form to the consumer.

## Mounting Procedures

### Be sure to observe the following when mounting CST tires:

- Lubricate both top and bottom beads with an approved lubricant. Never exceed 40 PSI to seat the beads.
- Both tire beads should be securely seated on the rim.
- Always replace a tire with another tire of the same bead diameter designation and suffix letters.

A new valve stem should be installed in the rim each time a worn tire (passenger or light truck) is replaced.

- Never put any flammable substance in the tire/rim assembly at any time. Never use any flammable substance in a tire/rim assembly and attempt to ignite in order to seat the beads.
- Be sure that the wheel is securely seated on the hub face.
- Do not stand, lean or reach over the assembly during inflation.
- Be sure that all lug nuts have been properly torqued to the manufacturer's specifications.
- Be sure that there is no build-up of dirt or debris between the hub and the wheel.
- Be sure that the wheel is not bent or damaged.

### The wheel should not be used if:

- The flange is bent.
- The welds or rivets are leaking.
- The stud holes are elongated (rather than round).
- The wheel has more than 1/16" radial or lateral run-out.



- Matching tires on four-wheel drive and all-wheel drive vehicles: special attention should be paid to ensure that all four tires are closely matched in height and width to avoid strain and possible damage to the vehicle. Tire inflation pressure also affects the tire's rolling circumference and should be matched according to the vehicle manufacturer's recommendations. Always check the vehicle manufacturer's recommendations prior to installing new tires.

**Warning: Improper mounting, under-inflation, overloading or tire damage may result in tire failure, which may lead to serious injury or death. Tire and rim sizes must correspond for proper fit and application.**

**Warning: Tire changing can be dangerous and should be done only by trained persons using proper tools and procedures as established by the Rubber Manufacturers Association. Failure to comply with proper procedures may result in incorrect positioning of the tire or wheel assembly which could cause the assembly to explode with enough force to cause serious physical injury or death. Never mount or use damaged tires.**

#### If replacing fewer than four tires:

It is always preferred and CST recommends that **ALL FOUR** tires be replaced at the same time to optimize vehicle performance. In those cases where it is not feasible to install four new tires at the same time, some general guidelines are below. However, if the vehicle manufacturer has alternate recommendations, always follow those guidelines.

#### Replacing two tires:

When only two new tires are purchased, they should be installed on the rear axle, as long as the new tires have a speed rating equal to or greater than the speed rating as compared to the front tires. Generally, new tires will provide better grip and evacuate water more effectively, which is important when a driver encounters hydroplaning situations. When placed on the rear axle, new tires or tires with deeper tread depth than the front tires provide greater traction on wet surfaces. This can also help prevent a possible oversteer condition and loss of vehicle stability.

#### Replacing one tire:

While not recommended, if a single tire replacement is unavoidable, it is best to pair the new tire with the tire that has the deepest tread, and that both be placed on the rear axle. When placed on the rear axle, new tires or tires with deeper tread depth than the front tires provide greater traction on wet surfaces. This can also help prevent a possible oversteer condition and loss of vehicle stability.

#### Tire Speed Rating Chart

The rating system shown below displays the top speed for which a tire is certified. It does not indicate the total performance capacity of a tire. This information will not be found on all tires. The speed rating denotes the speed for which a tire was designed to be driven for extended periods.

For tires having a maximum speed capability above 149 mph (240 km/h), a "ZR" may appear in the size designation. For tires having a maximum speed capability above 186 mph (300 km/h), a "Y"

must appear in the size designation, including a "Y" speed symbol in brackets.

**Example:** P275/40R17 93W at 168 mph (270km/h) or P275/40ZR17 at above 149 mph (240 km/h).

Rating Symbol	Speed (km/h)	Speed (mph)	Rating Symbol	Speed (km/h)	Speed (mph)
B	50	31	P	150	93
C	60	37	Q	160	99
D	65	40	R	170	106
E	70	43	S	180	112
F	80	50	T	190	118
G	90	56	U	200	124
J	100	62	H	210	130
K	110	68	V	240	149
L	120	75	W	270	168
M	130	81	Y	300	186
N	140	87	ZR	Over 240	Over 150

**ALL THE TIRES IN THIS CATALOG ARE TUBELESS.**

#### TIRE SAFETY

Riding on worn tires can cause loss of traction, leading to an accident and possible serious injury. Replace your tires when there is only 2/32" of tread depth remaining. All DOT-approved tires have a tread-wear indicator bar woven into the tread pattern. While this small piece of rubber appears to be a bridge between the two tire grooves, it is only 2/32" high. When the top of this indicator bar is even with the plane of the tread pattern, replace your tires.

**Another way to judge this indicator:** Stick a penny, head down, in the tread. Seeing the top of Lincoln's head means that you're down to 2/32" and your tires must be replaced.

For optimum safety, especially in wet conditions, replace your tires when you have 4/32" of tread remaining.

Always choose the original size or the size recommended by your manufacturer when replacing your tires. Replacing tires of different speed ratings, sizes or construction could lead to improper tire performance, tire failure and accident, causing possible serious injury or death.

Changing the size of your tire's height, width, load capacity and/or tread design can change your tire's performance.

If you must use tires of differing profiles, mount the widest tires on the rear of the vehicle.

Don't mix radial and non-radial tires. If you mix radial and non-radial tires, you may have trouble with consistent handling. Handling problems can lead to loss of vehicle control, accidents, injuries and death.

If you must measure the width of your tires, be sure that the tires are mounted on a rim recommended by the Tire and Rim Association (T&RA) at the specified tire pressure.



## TIRE SAFETY (CONTINUED)

Depending on a tire's construction, if a tire is mounted on too narrow or too wide a rim, the tire's profile will be changed. The resulting change can unbalance and stress the tire's body and lead to poor performance, tire failure, accidents, injury and/or death.

Never use P-metric automotive tires as replacements for light truck tires or on a vehicle equipped with dual-rear tires. Each tire is manufactured with a specific speed rating and load requirements to ensure proper vehicle use.

Damaged or incorrectly mounted tires can suddenly fail, causing serious injury or death. Tires should only be repaired by professionals.

**NEVER OVERLOAD YOUR TIRES:** Overloading can cause a range of problems – everything from poor handling and poor mileage to failure of vehicle components or tire failure. Tire failure can cause accidents, leading to serious injuries and death. Check your owner's manual to be sure that you're within safety limits for the load your tires can handle. If you're having tires mounted, be sure to check the load limit of the tires to be mounted. The load index of the replacement tires should always meet or exceed the maximum load of the original tires.

Proper tire inflation is essential! Your vehicle cannot handle its load without the right amount of air pressure – and the results could be disastrous, including accidents, serious injuries and death. Most tire failures are caused by under-inflation. Proper inflation is also essential for your vehicle's performance. Unless your tires are properly inflated, you won't get the best gas mileage from your vehicle. In fact, you could lose as much as 5% of your car's optimum mileage by failing to properly inflate your tires.

Check your tire pressure at least once a month, and always check before long trips. Use a tire gauge, and be sure that your tires are still cold when you check them. If your vehicle still has its original tires, use the optimum pressure specified by the vehicle manufacturer as a guide. If you've replaced your tires, check with your dealer regarding optimum tire pressure.

**REMEMBER:** Your tires can be under-inflated long before you can see or feel any change. Don't trust your eyes, and don't trust your vehicle's feel; trust a tire gauge.

**NEVER SPIN YOUR TIRES:** Being stuck in mud or snow can be frustrating – but if you spin your tires, being stuck can be dangerous. Your tire might be spinning much faster than your speedometer indicates, causing injury or death as well as damage to your vehicle. A tire spinning off the ground presents an equal or greater hazard.

**NEVER STAND BEHIND OR CLOSE TO A SPINNING TIRE.** Excess speed is a danger to your tires, your vehicle and your safety. Driving above the speed limit can stress your tires, leading to sudden tire failure.

Remember that a mini-spare tire is a temporary fix, and is **NOT** designed to be ridden for long periods of time! NEVER drive over 50 miles per hour when using a mini-spare tire. Have a new tire installed as soon as possible. Check the inflation in your spare tire as well. Spare tires lose air pressure over time. You don't want to discover that

your spare tire is under-inflated when you need it most.

You should also periodically replace your spare to prevent damage from aging.

### Tire maintenance and information

Avoid irregular tire wear, which can contribute to poor tire performance and tire failure! Failing to rotate your tires at least every 6000-8000 miles also means that you'll have to replace them much more quickly. Always refer to your owner's manual for the rotation schedule and pattern specific to your vehicle.

Unbalanced tires, which can be caused by hitting curbs, potholes or other road hazards, affect your ride quality and tire life. You can usually detect an unbalanced tire through vibrations in the steering wheel at certain speeds. If you suspect that your tires may be unbalanced, have them inspected by a professional as soon as possible to avoid excessive wear and damage to your vehicle's front end parts.

Improper alignment will affect your car's tire wear, gas mileage, stability and overall performance. Even if you haven't noticed a problem, you should still have your car or truck aligned at least once a year as part of a regular maintenance program. If you think your vehicle might be out of alignment, your vehicle must be inspected by a professional as soon as possible. Have your tires inspected immediately if you notice any warning signs of improper alignment, which include the following:

- Excessive or uneven wear
- Steering wheel pulling to the left or right
- Feeling of looseness or wandering
- Steering wheel vibration or shimmy
- Steering wheel isn't centered when car is moving straight ahead

If you will not be using your tires for a long period, don't leave them on your vehicle. Store unused tires in a cool, dry place away from sunlight and other elements which can accelerate tire aging over time.

If you're using winter or snow tires, have them mounted on all four wheels. Using winter or snow tires only on the front of your vehicle is extremely dangerous and could lead to handling problems, loss of vehicle control, accident, injury and death. Keep tires looking their best by cleaning with a mild soap or detergent and a semi-soft bristle brush. Rinse with clean, plain water.

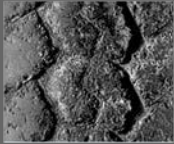




# TIRE ASSESSMENT CHART

## Abnormal Tread Wear

Tread wear issues appear as flat spots, or areas of rapid wear on the tire. They can also be seen as deformed tread blocks or cracking in the tread area. This type of wear is usually a result of brake problems, suspension or alignment problems, an unbalanced tire and wheel assembly, or misuse.



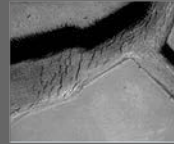
Mushroomed Tread



Rapid Shoulder Wear



Rapid Center Wear



Cracking Between Tread



Flatspot

## Sidewall Damage

Sidewall damage appears as cuts, tears, bubbles, or scrapes anywhere along the sidewall of the tire. This type of damage usually occurs when a tire encounters a road hazard. This could include anything from a curb to a bolt or piece of metal. Sharp objects or very concentrated stresses usually cause cuts and tears. Bubbles and scrapes occur due to impact damage or prolonged abrasion.



Letter Defect



Sidewall Bubble – A bulge that appears on the outside of a tire is usually a sign of separation



Sidewall Tear



Sidewall Cut

## Tire Separations

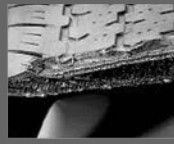
Separations appear as bulges on the shoulder or tread face, or as localized wear above the separated region. A groove worn along the shoulder could be a sign of separation. Separations are mainly caused by abnormal heat build up. Excessive heat can build up during prolonged high speed driving, overloaded or under-inflated tire conditions. Separations can also be caused by penetration of water or foreign materials into the carcass of the tire. This material enters through cuts caused by road hazards.



Bead Separation



Tread Separation



Belt Separation



Shoulder Separation – A groove worn in the shoulder of the tire, is usually evidence of separation



## Road Hazard

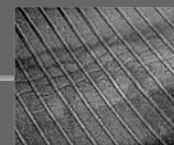
Road Hazard Damage appears as protruding objects or cuts in the tire. Misuse or neglect appears as wrinkles in the inner liner or scuffing that extends around the circumference of the tire. Road hazard damage occurs when a sharp object comes in contact with the tire. Misuse and neglect can occur to severely under-inflated tires or to tires with insufficient clearance between the tire and fenders. It can also occur when dual axle tires are overloaded, or there is not enough clearance between the two tires of the assembly.



Puncture – Normally, the only evident of a puncture will be a cut that extends from the tread of the tire through the inner liner.



Under-Inflated Tire – An abrasion may run around the circumference of the tire and wrinkles may be observed in the inner liner.



## Bead Problems

Bead Problems appear as a broken bead, chafing of the rubber around the bead, or deformation of the bead area. A broken bead can occur when a tire is mounted on an improper rim or carelessly mounted or dismounted. Bead chafing can occur when mounting a tire on a dirty or mismatched rim, or when the tire is in an overloaded or under-inflated condition. A bent or deformed bead usually occurs when the tire is improperly stored, or excessive stress is applied to the bead area during mounting.



Broken Bead



Damaged Bead



Bent Bead



# RUN-FLAT TECHNOLOGY

## CST's AD'R9 run-flat technology – the safe and reliable alternative for cars that don't include a spare tyre

'Run-flat tires' is the technical term for anti-blow-out tires.

A properly inflated tire supports the weight of a vehicle primarily with the sidewall. Driving with low or zero inflation pressure puts additional stress on the sidewall, which can cause sudden sidewall failure. This is especially critical for front-wheel-drive cars, where front tire failures can often lead to total loss of control.

Run-flat tires allow vehicles to travel at 80km/h for a distance of 80 kilometres even with zero air pressure, delivering extra safety and peace of mind until the tire is repaired or replaced at the earliest possible opportunity.

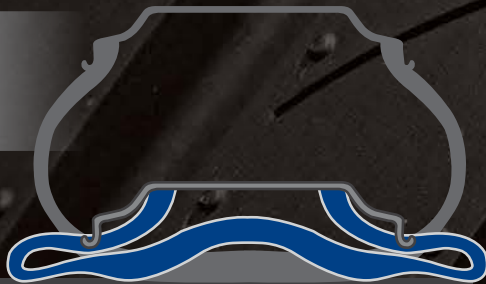


### TRADITIONAL TYRE

PROPER INFLATION PRESSURE



ZERO INFLATION PRESSURE



### AD-R9 RUN-FLAT TECHNOLOGY



Run-flat capability facilitated by reinforced section of the sidewalls



High stiffness steel belts enhance tire structure and stability by minimising the deformation by flat tire for a safe journey



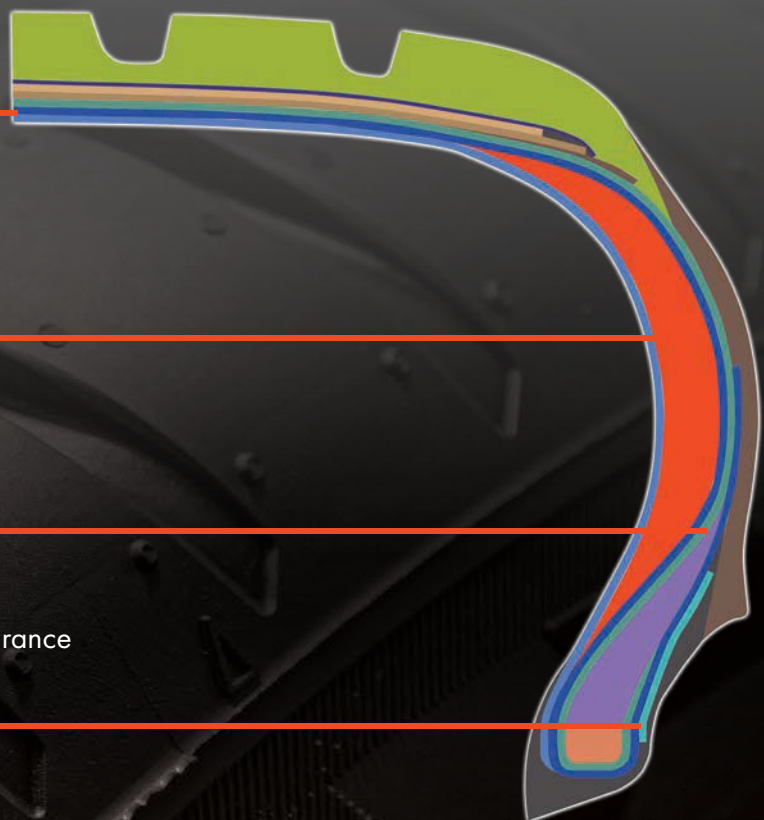
Extra rubber padding and special body-PLY construction provide outstanding endurance under low air pressure



Advanced bead filler rubber improves stiffness under high temperature conditions



Extra PLY in the sidewall strengthens bead endurance for a better loading under low air pressure



RUNFLAT