

**ELI TOMAC**  
FACTORY CONNECTION GEICO HONDA



**CYCRA**  
VOLUME XIX





# AMERICAN MADE

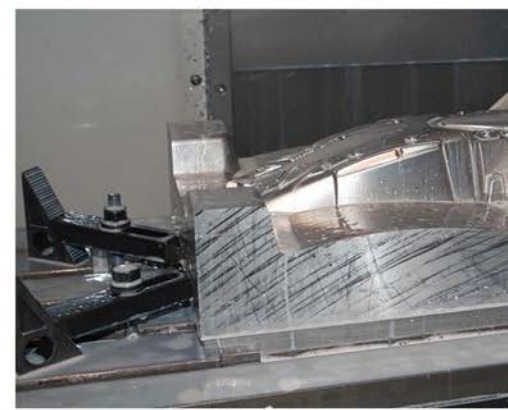
Welcome to CYCRA Racing, the "Never Stock, Never Replica, Get Me Cycra!" company that brings you 19 years of innovative, patented products such as PowerFlow Shrouds, CycraLite Vented Fenders, Full Armor Skid Plates, Proband and Rebound Hand guards and much more.

We have exciting news in 2015, we moved into our new modern manufacturing facility located in Thomasville, North Carolina! We are working on offering the best in customer service, increased inventory levels and a host of new products. Cofounders Ken and Glen Lavins continue to create some of the best motorcycle products on the planet, so check out the new PowerFlow Body Kits for many of the current MX and Diffroad machines.

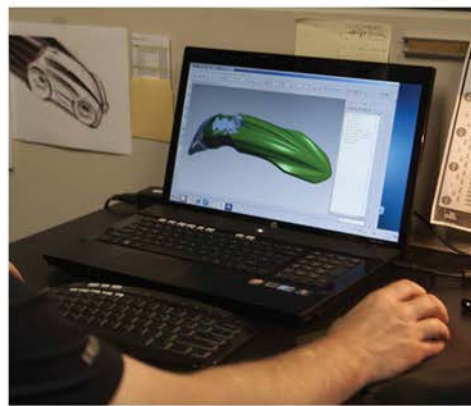
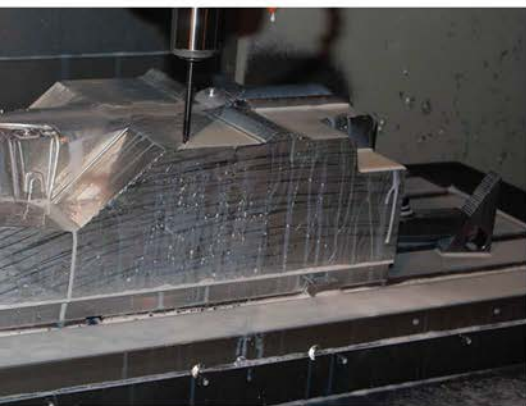
We appreciate your support of the CYCRA brand as we continue to strive to provide you quality products and service. We are proud supporters of many (Factory Teams) such as JGRMX Yamaha, Rock River Yamaha, STAR Racing Yamaha, AM Pro Yamaha, Geico Factory Connection Honda, Morgantown Honda, Babbitt's Kawasaki, Nick Wey Kawasaki, Troy Lee Designs KTM, Ryan Sipes KTM and many more. Set yourself apart from the crowd and join our team, Made in the USA. Thank you for the support!



From the CYCRA Team







## BODY WORK

### HONDA

- Honda Complete Powerflow Body Kits - **Page 08**
- Honda Powerflow Radiator Shrouds - **Page 12**
- Honda Front Stadium Number Plates - **Page 14**
- Honda Front Fenders - **Page 16**
- Honda Powerflow Rear Fenders - **Page 20**
- Honda Fork Guards - **Page 22**
- Honda Disc Guards - **Page 23**
- Honda Mud Flaps - **Page 23**
- Honda Side Number Panels - **Page 24**
- Honda Skid Plates - **Page 26**

### KAWASAKI

- Kawasaki Complete Powerflow Body Kits - **Page 32**
- Kawasaki Powerflow Radiator Shrouds - **Page 36**
- Kawasaki Front Fenders - **Page 40**
- Kawasaki Front Stadium Number Plates - **Page 44**
- Kawasaki Mud Flaps - **Page 45**
- Kawasaki Fork Guards - **Page 45**
- Kawasaki Side Number Panels - **Page 46**
- Kawasaki Powerflow Rear Fenders - **Page 47**
- Kawasaki Skid Plates - **Page 48**

### KTM

- KTM Complete Powerflow Body Kits - **Page 54**
- KTM Powerflow Radiator Shrouds - **Page 58**
- KTM Front Stadium Number Plates - **Page 60**
- KTM Fork Guards - **Page 61**
- KTM Front Fenders - **Page 62**
- KTM Powerflow Rear Fenders - **Page 66**
- KTM Mud Flaps - **Page 68**
- KTM Skid Plates - **Page 70**

### YAMAHA

- Yamaha Complete Powerflow Body Kits - **Page 76**
- Yamaha Powerflow Radiator Shrouds - **Page 80**
- Yamaha Front Stadium Number Plates - **Page 82**
- Yamaha Front Fenders - **Page 84**
- Yamaha Powerflow Rear Fenders - **Page 88**
- Yamaha Side Number Panels - **Page 80**
- Yamaha Fork Guards - **Page 92**
- Yamaha Mud Flaps - **Page 93**
- Yamaha Disc Guards - **Page 93**
- Yamaha Skid Plates - **Page 94**

## HAND GUARDS

- Proband Hand Guard Systems - **Page 100**
- Rebound Hand Guard Systems - **Page 112**
- Stealth Hand Guard Systems - **Page 114**
- M2 & M4 Hand Guard Systems - **Page 116**
- Hand Guard Hardware - **Page 118**
- Replacement Shields - **Page 120**
- Abrasion Guards - **Page 121**

## MOTO GEAR

- Moto Stands - **Page 124**
- Soft Strap Tie Downs - **Page 126**
- Grip Armor - **Page 127**
- Keychains - **Page 128**
- Apparel - **Page 129**







# BODY WORK







## FEATURES

-  QUALITY INJECTION MOLDED FIT
-  LIGHTER WEIGHT
-  SLIM DESIGN
-  VENTED FOR AIRFLOW
-  MAXIMIZES COOLING EFFICIENCY
-  ADDED CLEARANCE/COVERAGE
-  REINFORCED
-  IMPROVED ERGONOMICS
-  PATENTED TECHNOLOGY
-  ULTIMATE PROTECTION
-  STRONG HIGH IMPACT MATERIAL
-  COLOR OPTIONS
-  FACTORY LOOK & PERFORMANCE
-  EASY INSTALLATION
-  INCLUDES HARDWARE
-  MADE IN THE USA
-  INTERNATIONAL SHIPPING



MADE IN THE USA

HONDA  
BODY WORK



▶ **POWERFLOW**  
Rear Fender



▶ Side Number Panels



06

**CYCRA**



photo by SIMON CUDBY



MADE IN THE USA



HONDA  
BODY WORK

▶ **POWERFLOW**  
Radiator Shrouds

▶ **STADIUM**  
Front Number Plate

▶ Front Fender

▶ Fork Guards

▶ Skid Plate



**GEICO**  
Honda Racing

**HONDA**  
BODY WORK





MADE IN THE USA

HONDA  
POWERFLOW BODY KITS

# POWERFLOW BODY KITS

photo by SIMON CUDBY



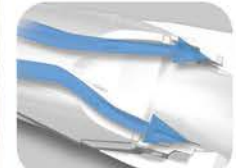
JUSTIN BOOLE  
FC GEICO HONDA



Stadium Number Plate  
Lighter Than Stock  
Includes Cable Guide



Powerflow Intake Shrouds  
Reduce Radiator, Fuel Tank &  
Cylinder Head Temperatures



Powerflow Rear Fender  
Provides Clean Airflow  
to Airbox

## CRF POWERFLOW BODY KIT

- Includes Stadium Front Number Plate, Performance OE Front Fender, Powerflow Radiator Shrouds, Side Number Panels, Fork Guards, Powerflow Rear Fender

- All POWERFLOW components enhance cooling efficiency

PART #	APPLICATION	COLOR
9311-02	14-15 CRF250/13-15 CRF450	Stock
9311-33	14-15 CRF250/13-15 CRF450	Red
9311-42	14-15 CRF250/13-15 CRF450	White
9311-12	14-15 CRF250/13-15 CRF450	Black



9311-02 STOCK  
2013-2015





9311-33 RED  
2013-2015



9311-42 WHITE  
2013-2015



9311-12 BLACK  
2013-2015







9304 - 33 **RED**



9304 - 02 **STOCK**



9304 - 42 **WHITE**



9304 - 12 **BLACK**

**2009-2012**

**CRF POWERFLOW BODY KIT**

- Includes Stadium Front Number Plate, Performance OE Front Fender, Powerflow Radiator Shrouds, Side Number Panels, Fork Guards, Powerflow Rear Fender

- All POWERFLOW components maximize cooling efficiency

PART #	APPLICATION	COLOR
9304-02	10-13 CRF250/09-12 CRF450	Stock
9304-33	10-13 CRF250/09-12 CRF450	Red
9304-42	10-13 CRF250/09-12 CRF450	White
9304-12	10-13 CRF250/09-12 CRF450	Black



Stadium Number Plate  
Lighter Than Stock  
Includes Cable Guide



Powerflow Intake Shrouds  
Reduce Radiator, Fuel Tank &  
Cylinder Head Temperatures



Powerflow Rear Fender  
Provides Clean Airflow  
to Airbox





98XX-33 **RED**



98XX-33 **WHITE**



98XX-33 **BLACK**



98XX-02 **STOCK**



9811-02 **STOCK**

**2006-2008**

**CRF POWERFLOW BODY KIT**

- Includes Stadium Front Number Plate, Performance OE Front Fender, Powerflow Radiator Shrouds, Side Number Panels, Fork Guards, Powerflow Rear Fender
- All POWERFLOW components enhance cooling efficiency

PART #	APPLICATION	COLOR
9804-02	09-12 CRF450/ 10-13 CRF 250	OEM Stock
9804-12	09-12 CRF450/ 10-13 CRF 250	Black
9804-33	09-12 CRF450/ 10-13 CRF 250	Red
9804-42	09-12 CRF450/ 10-13 CRF 250	White
9811-02	09 CRF 250	OEM Stock
9801-02	08 CRF 250	OEM Stock
9801-12	08-09 CRF 250	Black
9801-33	08-09 CRF 250	Red
9801-42	08-09 CRF 250	White
9803-02	08 CRF 450	OEM Stock
9803-12	08 CRF 450	Black
9803-33	08 CRF 450	Red
9803-42	08 CRF 450	White
9802-02	07 CRF 450	OEM Stock
9802-12	07 CRF 450	Black
9802-33	07 CRF 450	Red
9802-42	07 CRF 450	White
9800-02	06-07 CRF 250	OEM Stock
9800-12	06-07 CRF 250	Black
9800-33	06-07 CRF 250	Red
9800-42	06-07 CRF 250	White



Stadium Number Plate  
Lighter Than Stock  
Includes Cable Guide



Powerflow Intake Shrouds  
Reduce Radiator, Fuel Tank &  
Cylinder Head Temperatures



Powerflow Rear Fender  
Provides Clean Airflow  
to Airbox







MADE IN THE USA

HONDA  
POWERFLOW SHROUDS



Vented for  
Airflow



Maximizes  
Cooling



Factory Look  
& Performance

photo by SIMON CUDBY



# POWERFLOW TECHNOLOGY



**PATENTED BYPASS  
AIRFLOW**  
reduces radiator, fuel tank and  
cylinder head temperatures resulting  
in power gains

1887-33 RED



2013-2015



1887-42 **WHITE**



1887-12 **BLACK**

2009-2012



1886-42 **WHITE**



1886-12 **BLACK**

2004-2008



18X5-42 **WHITE**



18X5-12 **BLACK**

### CRF POWERFLOW INTAKE RADIATOR SHROUDS

- Patented By-Pass Airflow Technology
- Reduces radiator, fuel tank and cylinder head temperatures
- Injection molded precise fit and high gloss finish
- Innovative patented design

PART #	APPLICATION	COLOR
1887-33	14-15 CRF250/13-15 CRF450	Red
1887-12	14-15 CRF250/13-15 CRF450	Black
1887-42	14-15 CRF250/13-15 CRF450	White
1886-33	09-12 CRF 450/10-12 CRF 250	Red
1886-12	09-12 CRF 450/10-12 CRF 250	Black
1886-42	09-12 CRF 450/10-12 CRF 250	White
1885-33	05 - 08 CRF 450R	Red
1885-12	05 - 08 CRF 450R	Black
1885-42	05 - 08 CRF 450R	White
1875-33	04 - 09 CRF 250R, 250X	Red
1875-12	04 - 09 CRF 250R, 250X	Black
1875-42	04 - 09 CRF 250R, 250X	White



1886-33 **RED**



18X5-33 **RED**

HONDA  
POWERFLOW SHROUDS

MADE IN THE USA





MADE IN THE USA

HONDA  
STADIUM NUMBER PLATES

photo by SIMON CUDBY

JUSTIN BOGLE  
FACTORY CONNECTION GEICO HONDA

# STADIUM PLATES



▶ **ULTRA LIGHTWEIGHT**  
quality injection molded fit & finish



▶ **ADDED CLEARANCE**  
for Honda CRF Stock steering stabilizer



▶ **PROTECTION**  
for triple clamps and fork  
mounts provided by  
extended legs







**2013-2015**  
1209-02 **NATURAL**



1209-33 **RED**



1209-12 **BLACK**



1209-42 **WHITE**



**2009-2012**  
1207-02 **NATURAL**



1207-33 **RED**



1207-12 **BLACK**



1207-42 **WHITE**



**2008-2009**  
1205-02 **NATURAL**



1205-33 **RED**



1205-12 **BLACK**



1205-42 **WHITE**



**2004-2007**  
1200-02 **NATURAL**



1200-32 **RED**



1200-12 **BLACK**



1200-42 **WHITE**

**CABLE GUIDES**

- High quality injection molded
- Color match with graphic background
- All mounting hardware included

PART #	APPLICATION	COLOR
1235-42	All Cycra Stadium Plates	White
1235-12	All Cycra Stadium Plates	Black



**CRF STADIUM PLATES**

- Extended Legs Protect Triple Clamp
- Ultra lightweight injection molded
- Added clearance for steering stabilizer (08-15 applications)
- Cable Guide, crossbar strap and zipties Included
- Factory look with 4 available color ways
- Proudly made in the USA

PART #	APPLICATIONS	COLOR
1209-02	13-15 CRF 450/14-15 CRF 250	Natural
1209-12	13-15 CRF 450/14-15 CRF 250	Red
1209-33	13-15 CRF 450/14-15 CRF 250	Black
1209-42	13-15 CRF 450/14-15 CRF 250	White
1207-02	09-12 CRF 450/10-13 CRF 250	Natural
1207-12	09-12 CRF 450/10-13 CRF 250	Black
1207-33	09-12 CRF 450/10-13 CRF 250	Red
1207-42	09-12 CRF 450/10-13 CRF 250	White
1205-02	08 - 09 CRF 250 / 08 CRF 450	Natural
1205-12	08 - 09 CRF 250 / 08 CRF 450	Black
1205-32	08 - 09 CRF 250 / 08 CRF 450	Red
1205-42	08 - 09 CRF 250 / 08 CRF 450	White
1200-02	04 - 07 CR 125/ 250, CRF 250/ 450	Natural
1200-32	04 - 07 CR 125/ 250, CRF 250/ 450	Black
1200-12	04 - 07 CR 125/ 250, CRF 250/ 450	Red
1200-42	04 - 07 CR 125/ 250, CRF 250/ 450	White





HONDA  
PERFORMANCE FENDERS  
MADE IN THE USA

-  Vented for Airflow
-  Reinforced Fender Brace
-  Quality Injection Molded Finish

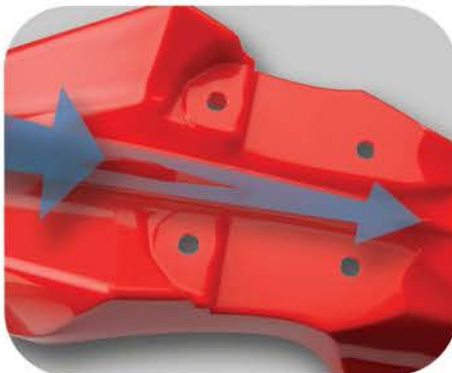
photos by DEN STENNING

# PERFORMADUCE FRONT FENDERS

COLTON FACCIOTTI  
HONDA CANADA GDR



▶ **INTEGRATED FENDER BRACE TECHNOLOGY (IFB)**  
reinforced shape that is stiffer than stock with a quality injection molded fit and finish



▶ **POWERFLOW AIR CHANNEL**  
patented technology for increased airflow to radiator



1502-33 RED





2013-2015



1502-42 **WHITE**

2009-2012



1501-42 **WHITE**

2006-2008



1500-42 **WHITE**



1502-12 **BLACK**



1501-12 **BLACK**



1500-12 **BLACK**

**CRF PERFORMANCE OEM  
FRONT FENDERS**

- Integrated Fender Brace (IFB) Technology
- Reinforced and Stiffer than stock
- Patented Powerflow channel for increased airflow to radiator
- Quality injection molded fit and finish

PART #	OEM APPLICATION	COLOR
1502-42	13-15 CRF 450 / 14-15 CRF 250	White
1502-12	13-15 CRF 450 / 14-15 CRF 250	Black
1502-33	13-15 CRF 450 / 14-15 CRF 250	Red
1501-42	09-12 CRF 450 / 10-13 CRF 250	White
1501-12	09-12 CRF 450 / 10-13 CRF 250	Black
1501-33	09-12 CRF 450 / 10-13 CRF 250	Red
1500-42	04 - 07 CR 125/250	White
	04 - 09 CRF 250 / 04 - 08 CRF 450	
1500-12	04 - 07 CR 125/250	Black
	04 - 09 CRF 250 / 04 - 08 CRF 450	
1500-33	04 - 07 CR 125/250	Red
	04 - 09 CRF 250 / 04 - 08 CRF 450	



1501-33 **RED**



1500-33 **RED**







MADE IN THE USA

**HONDA**  
CYCRALITE FENDERS



Vented for  
Airflow



Maximizes  
Cooling



Factory Look  
& Performance

# CYCRALITE FRONT FENDERS



▶ **INTEGRATED FENDER BRACE TECHNOLOGY (IFB)**  
reinforced shape that is stiffer than stock with a quality injection molded fit and finish



▶ **VENTED BACK**  
provides 33% more airflow to radiator for maximum cooling efficiency

1502-33 RED



**2013-2015**



**1402-42 WHITE**

**2009-2012**



**1401-42 WHITE**

**2006-2008**



**1400-42 WHITE**



**1402-12 BLACK**



**1401-12 BLACK**



**1400-12 BLACK**

### CRF CYCRALITE FRONT FENDERS

- Integrated Fender Brace (IFB) Technology
- Reinforced and Stiffer than stock
- Patented Powerflow channel & vented back for max airflow
- Quality injection molded fit and finish

PART #	OEM APPLICATION	COLOR
1402-42	13-15 CRF 450 / 14-15 CRF 250	White
1402-12	13-15 CRF 450 / 14-15 CRF 250	Black
1402-33	13-15 CRF 450 / 14-15 CRF 250	Red
1401-42	09-12 CRF 450 / 10-13 CRF 250	White
1401-12	09-12 CRF 450 / 10-13 CRF 250	Black
1401-33	09-12 CRF 450 / 10-13 CRF 250	Red
1400-42	04 - 07 CR 125/250	White
	04 - 09 CRF 250 / 04 - 08 CRF 450	
1400-12	04 - 07 CR 125/250	Black
	04 - 09 CRF 250 / 04 - 08 CRF 450	
1400-33	04 - 07 CR 125/250	Red
	04 - 09 CRF 250 / 04 - 08 CRF 450	



**1401-33 RED**



**1400-33 RED**

**HONDA**  
CYCRALITE FENDERS

MADE IN THE USA





MADE IN THE USA

HONDA  
REAR FENDERS

photo by SIMON CUDBY

ELI TOMAC  
FACTORY CONNECTION GEICO HONDA



Vented for  
Airflow



Reinforced  
Sides & Handles

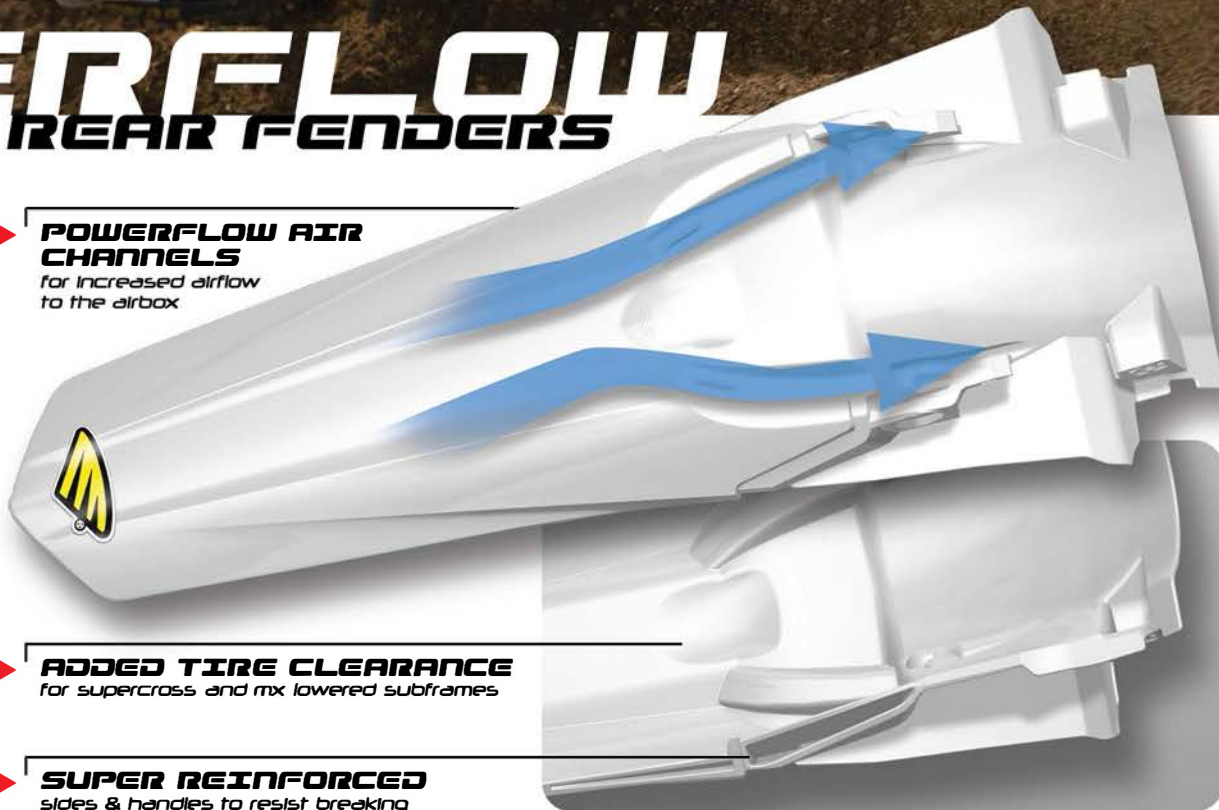


Added Tire  
Clearance

# POWERFLOW REAR FENDERS



▶ **POWERFLOW AIR CHANNELS**  
for increased airflow  
to the airbox



▶ **ADDED TIRE CLEARANCE**  
for supercross and mx lowered subframes

▶ **SUPER REINFORCED**  
sides & handles to resist breaking

20

**CYGRA**



**2013-2015**



1812-42 **WHITE**



1812-12 **BLACK**



1812-33 **RED**

**2009-2012**



1811-42 **WHITE**



1811-12 **BLACK**



1811-33 **RED**

**2006-2009**



1821-42 **WHITE**



1821-12 **BLACK**



1821-33 **RED**

**2005-2008**



1801-42 **WHITE**



1801-12 **BLACK**



1801-33 **RED**

**2002-2004**



1800-42 **WHITE**



1800-12 **BLACK**



1800-33 **RED**

**2002-2007**



1810-42 **WHITE**



1810-12 **BLACK**



1810-33 **RED**



Powerflow Channels increase airflow to airbox



Reinforced Sides & Handles Resist Breaking

**CRF POWERFLOW REAR FENDERS**

- Powerflow vents allow clean airflow to airbox
- Matches OEM stock shape
- Quality injection molded fit and finish

PART #	APPLICATION	COLOR
1812-33	13 -15 CRF 450	Red
14 -15 CRF 250		
1812-12	13 -15 CRF 450	Black
14 -15 CRF 250		
1812-42	13 -15 CRF 450	White
14 -15 CRF 250		
1811-33	09 -12 CRF 450	Red
10 -13 CRF 250		
1811-12	09 -12 CRF 450	Black
10 -13 CRF 250		
1811-42	09 -12 CRF 450	White
10 -13 CRF 250		
1821-33	06 -09 CRF 250	Red
1821-12	06 -09 CRF 250	Black
1821-42	06 -09 CRF 250	White
1801-33	05 -08 CRF 450	Red
1801-12	05 -08 CRF 450	Black
1801-42	05 -08 CRF 450	White
1800-32	02 -04 CRF 450	Red
1800-12	02 -04 CRF 450	Black
1800-42	02 -04 CRF 450	White
1810-32	02 -07 CR 125/250	Red
1810-12	02 -07 CR 125/250	Black
1810-42	02 -07 CR 125/250	White

HONDA  
REAR FENDERS

MADE IN THE USA





MADE IN THE USA

HONDA  
FORK GUARDS

ZACH BELL  
FACTORY CONNECTION GEICO HONDA



Strong CNC Machined  
Mount Points



Reinforced Mounts  
for Start Devices



Factory Look  
& Performance

# FORK GUARDS

photo by SIMON CUDBY



**REINFORCED**  
mount points for strength  
and accuracy

6900-12 **BLACK**

- High Quality Injection Molded for Precise Fit and Finish
- CNC machined mount points ensure strength & accuracy
- Reinforced mounts for start devices
- Factory look and performance
- Easy Installation
- Made in the USA

PART #	APPLICATION	COLOR
6900-02	2006-15 CRF 250/450	Natural
6900-12	2006-15 CRF 250/450	Black
6900-33	2006-15 CRF 250/450	Red
6900-42	2006-15 CRF 250/450	White
6900-02	2002-07 CR 125/250	Natural
6900-12	2002-07 CR 125/250	Black
6900-33	2002-07 CR 125/250	Red
6900-42	2002-07 CR 125/250	White



6900-02 **NATURAL**

6900-33 **RED**

6900-42 **WHITE**



# DISC COVERS

- Number one choice of Factory Honda riders
- Quality injection molded fit and finish
- Fits oversized and stock applications up to 280mm
- Protects brake rotor from rocks and debris
- Prolongs brake pad life



Protects brake rotor from rocks and debris



Prolongs life of brake pads

PART #	APPLICATION	COLOR
1095-02	2013 - 15 CRF 450	Natural
1095-02	2014 - 15 CRF 250	Natural
1095-12	2013 - 15 CRF 450	Black
1095-12	2014 - 15 CRF 250	Black
1095-42	2013 - 15 CRF 450	White
1095-42	2014 - 15 CRF 250	White
1094-02	2002 - 07 CR 125/250	Natural
1094-02	2002 - 12 CRF 450	Natural
1094-02	2002 - 13 CRF 250	Natural
1094-12	2002 - 07 CR 125/250	Black
1094-12	2002 - 12 CRF 450	Black
1094-12	2002 - 13 CRF 250	Black
1094-42	2002 - 07 CR 125/250	White
1094-42	2002 - 12 CRF 450	White
1094-42	2002 - 13 CRF 250	White



109X-02 **NATURAL**



109X-12 **BLACK**



109X-42 **WHITE**



1095-XX INCLUDE **SPACER KIT**

# MUD FLAPS

- Quality injection molded fit and finish
- Wider than stock to protect rear shock
- Used by Factory Honda & Factory Connection Honda

PART #	APPLICATION	COLOR
3882-02	2013 - 15 CRF 450	Natural
3882-02	2014 - 15 CRF 250	Natural
3882-12	2013 - 15 CRF 450	Black
3882-12	2014 - 15 CRF 250	Black
3882-32	2013 - 15 CRF 450	Red
3882-32	2014 - 15 CRF 250	Red
3878-02	2002 - 12 CRF 450 R	Natural
3878-02	2005 - 12 CRF 450 X	Natural
3878-02	2010 - 12 CRF 250	Natural
3878-02	1990 - 07 CR 125, 250	Natural
3878-12	2002 - 12 CRF 450 R	Black
3878-12	2005 - 12 CRF 450 X	Black
3878-12	2010 - 12 CRF 250	Black
3878-12	1990 - 07 CR 125, 250	Black
3878-32	2002 - 12 CRF 450 R	Red
3878-32	2005 - 12 CRF 450 X	Red
3878-32	2010 - 12 CRF 250	Red
3878-32	1990 - 07 CR 125, 250	Red
3875-02	2007 - 09 CRF 250	Natural
3875-12	2007 - 09 CRF 250	Black
3875-32	2007 - 09 CRF 250	Red



3882-02 **NATURAL**



3882-12 **BLACK**



3882-32 **RED**



3878-02 **NATURAL**



3878-12 **BLACK**



3878-32 **RED**



3875-02 **NATURAL**



3875-12 **BLACK**



3875-32 **RED**



**PROTECT**  
rear shock better than stock





MADE IN THE USA

HONDA  
SIDE PANELS



# SIDE NUMBER PANELS



Strong No Flex  
One Piece Design



Reinforced Panel  
Prevents Warp



Factory Look  
& Performance

MATT BISCEGLIA  
FC GEICO HONDA



▶ **IMPROVED SIDE INTAKE**  
*for increased airflow to airbox*

▶ **ROOST PROTECTION**  
*Integrated shelf blocks roost from rear tire*



2896-42 **WHITE**

▶ **REINFORCED PANEL**  
*prevents warping from exhaust  
or flexing during ride*



## 2013-2015



2896-33 **RED**



2896-12 **BLACK**

## 2009-2012



2895-33 **RED**



2895-12 **BLACK**

## 2006-2008



2885-33 **RED**



2885-12 **BLACK**

### CRF SIDE NUMBER PANELS

- Quality injection molded fit and finish
- Lighter than stock (06-12 Applications)
- Tough one piece construction
- Thicker than stock to prevent warping from exhaust (13-15)
- Improved side intake for increased airflow
- Blocks roost from rear tire (13-15)

PART #	APPLICATION	COLOR:
2896-33	2013-15 CRF 450/2014-15 CRF 250	Red
2896-12	2013-15 CRF 450/2014-15 CRF 250	Black
2896-42	2013-15 CRF 450/2014-15 CRF 250	White
2895-33	2009-12 CRF 450/2010-12 CRF 250	Red
2895-12	2009-12 CRF 450/2010-12 CRF 250	Black
2895-42	2009-12 CRF 450/2010-13 CRF 250	White
2885-33	2007 - 08 CRF 450	Red
2885-12	2007 - 08 CRF 450	Black
2885-42	2007 - 08 CRF 450	White
2875-33	2006 - 09 CRF 250	Red
2875-12	2006 - 09 CRF 250	Black
2875-42	2006 - 09 CRF 250	White



2895-42 **WHITE**



2885-42 **WHITE**

HONDA  
SIDE PANELS

MADE IN THE USA





MADE IN THE USA

HONDA  
FULL ARMOR SKID PLATES



Protects Frame & Vital Engine Parts



Lightweight & Shock Resistant



Slim Form Fitted Design

# FULL ARMOR SKID PLATES

**ALLOY**  
front mounting bracket



**SHOCK RESISTANT**  
& allows bike frame to flex  
unlike many alloy skid plates

- Slim design form fitted to frame and cases
- Lightweight, durable, and shock resistant
- Protection for frame and vital engine components
- Allows bike frame to flex unlike many alloy skid plates
- Developed by today's top teams

PART #	HONDA APPLICATIONS	COLOR
6200-33	2010-15 CRF 250	Red
6201-33	2009-15 CRF 450	Red
6200-80	2010-15 CRF 250	Grey
6201-80	2009-15 CRF 450	Grey
6200-12	2010-15 CRF 250	Black
6201-12	2009-15 CRF 450	Black



620X-80 GREY



620X-12 BLACK



620X-33 RED



## SPEED ARMOR SKID PLATES

- Available for most 2 and 4 stroke applications
- Protection for motor and lower frame rails
- Allow the frame to flex and don't have ridged feel of an aluminum plate
- Injection molded high impact material for toughness
- No additional clamps or hardware needed
- Quick and easy access for Oil Changes
- Developed on the National Outdoor Motocross & Cross Country series
- Includes: Speed Armor plate, lower frame tongue, & tie straps
- Easy Installation takes seconds
- 100% recyclable

**ULTRA LIGHTWEIGHT**



Ultra High Tensile Strength Tie Straps secure the skid plate to your bike

**EASY INSTALL**

PART #	APPLICATION	COLOR
6004-12	2009-15 CRF450	Black
6004-33	2009-15 CRF450	Red
6004-80	2009-15 CRF450	Gray
6002-12	2010-15 CRF250	Black
6002-33	2010-15 CRF250	Red
6002-80	2010-15 CRF250	Gray
6003-12	2005-08 CRF450	Black
6003-33	2005-08 CRF450	Red
6003-80	2005-08 CRF450	Gray
6001-12	2004-09 CRF250	Black
6001-33	2004-09 CRF250	Red
6001-80	2004-09 CRF250	Gray
6000-12	2002-07 CR 125/250	Black
6000-33	2002-07 CR 125/250	Red
6000-80	2002-07 CR 125/250	Gray
6100-12	Replacement Tie Straps	Black



60XX-12 BLACK



60XX-33 RED



60XX-80 GRAY

# SPEED ARMOR



Ultra Lightweight



Protection for Motor



Install in Seconds





## INDEPENDENT MOUNTS



0055 - 32X RED  
SEE PAGE 115



0225 - 32X RED  
SEE PAGE 116



0226 - 33 RED  
SEE PAGE 112

## WRAP AROUND SYSTEMS



740X - 32X RED  
SEE PAGE 102



7800 - 32 RED  
SEE PAGE 110



7X00 - 33 RED  
SEE PAGE 103



**MOTO STANDS**



**2037 - 32SE RED**  
SEE PAGE 125



**2037 - 32 RED**  
SEE PAGE 125



**2037 - 55WE RED**  
SEE PAGE 125



**2037 - 12 BLACK**  
SEE PAGE 125



**0001 - 32 RED**  
SEE PAGE 128



**0002 - 32 RED**  
SEE PAGE 128



**CYCRA TIEDOWNS**

**3081 - 32 RED**  
SEE PAGE 126



**HONDA**  
MOTO GEAR

MADE IN THE USA



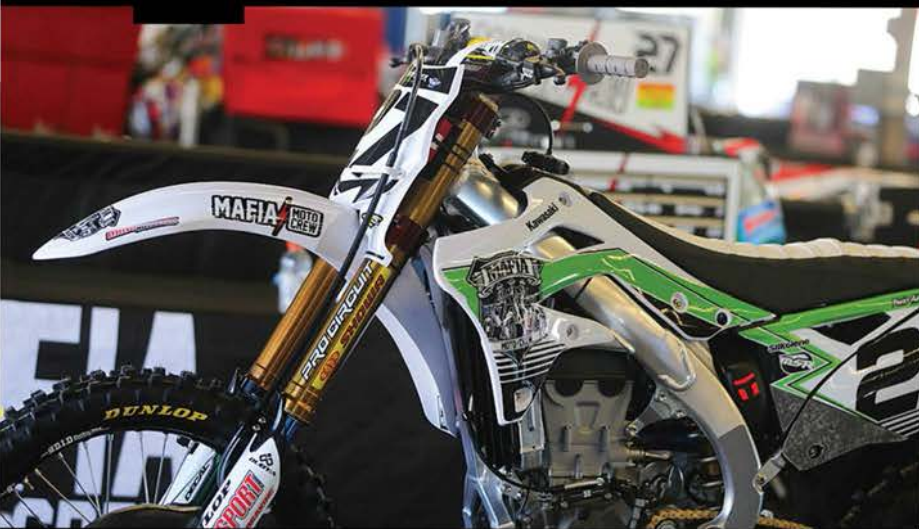
**MOTO GEAR**





MADE IN THE USA

KAWASAKI  
BODY WORK



30

**CYCRA**



MADE IN THE USA



**KAWASAKI**  
BODY WORK

▶ **POWERFLOW**  
Radiator Shrouds

▶ **STADIUM**  
Front Number Plate

▶ **Front Fender**

▶ **Fork Guards**



# **KAWASAKI**

## **BODY WORK**





photo by STEVE COX

# KXF450 POWERFLOW BODY KITS



Stadium Number Plate  
Lighter Than Stock  
Includes Cable Guide



Powerflow Intake Shrouds  
Reduce Radiator, Fuel Tank &  
Cylinder Head Temperatures



Powerflow Rear Fender  
Provides Clean Airflow  
to Airbox



NICK WEY  
TEAM MAFIA MOTO CREW

**KAWASAKI**  
POWERFLOW BODY KITS

MADE IN THE USA



Vented for  
Airflow



Quality Injection  
Molded Finish



Factory Look  
& Performance

## KXF POWERFLOW BODY KIT

- Includes Stadium Front Number Plate, Performane Front Fender, Powerflow Radiator Shrouds, Side Number Panels, Fork Guards, Powerflow Rear Fender

- All POWERFLOW components enhance cooling efficiency

PART #	APPLICATION	COLOR
9308-02	13-15 KXF 450	Stock
9308-72	13-15 KXF 450	OEM Green
9308-42	13-15 KXF 450	White
9308-12	13-15 KXF 450	Black
9308-72F	13-15 KXF 450	FLO Green



9308-02 STOCK  
2013-2015 KXF450





9308-12 **BLACK**  
2013-2015 **KXF450**



9308-72 **OEM GREEN**  
2013-2015 **KXF450**



9308-72F **FLO GREEN**  
2013-2015 **KXF450**



9308-42 **WHITE**  
2013-2015 **KXF450**





MADE IN THE USA

KAWASAKI  
POWERFLOW BODY KITS

photo by STEVE COX

# KXF250 POWERFLOW BODY KITS

DAKOTA TEDDER  
TEAM TEDDER RACING



Vented for  
Airflow



Quality Injection  
Molded Finish



Factory Look  
& Performance

## KXF POWERFLOW BODY KIT

- Includes Stadium Front Number Plate, Performane Front Fender, Powerflow Radiator Shrouds, Side Number Panels, Fork Guards, Powerflow Rear Fender

- All POWERFLOW components enhance cooling efficiency

PART #	APPLICATION	COLOR
930 7-02	13-15 KXF 250	Stock
930 7-72	13-15 KXF250	OEM Green
930 7-42	13-15 KXF 250	White
930 7-12	13-15 KXF250	Black
930 7-72F	13-15 KXF 250	FLO Green



Stadium Number Plate  
Lighter Than Stock  
Includes Cable Guide



Powerflow Intake Shrouds  
Reduce Radiator, Fuel Tank &  
Cylinder Head Temperatures



Powerflow Rear Fender  
Provides Clean Airflow  
to Airbox





9307-12 **BLACK**  
2013-2015 **KXF250**



9307-72 **OEM GREEN**  
2013-2015 **KXF250**



9307-72F **FLO GREEN**  
2013-2015 **KXF250**



9307-42 **WHITE**  
2013-2015 **KXF250**





MADE IN THE USA

KAWASAKI  
POWERFLOW SHROUDS

photos by JOSH RUD

KXF450

TYLER BOWERS  
TEAM BABBITT'S KAWASAKI



# POWERFLOW TECHNOLOGY



**▶ PATENTED BYPASS AIRFLOW**  
reduces radiator, fuel tank and cylinder head temperatures resulting in power gains

36

**CYCRA**





1866-72 **OEM GREEN**  
2013-2015 **KXF450**



1866-42 **WHITE**  
2013-2015 **KXF450**



1866-12 **BLACK**  
2013-2015 **KXF450**



1866-72F **FLO GREEN**  
2013-2015 **KXF450**

**KXF 450 POWERFLOW  
RADIATOR SHROUDS**

- Patented scoop for cooling efficiency & power gains
- Quality injection molded fit and finish for longer life
- One piece injection molded design

PART #	APPLICATION	COLOR
1866-72	13-14 KXF450	OEM Green
1866-42	13-14 KXF450	White
1866-12	13-14 KXF450	Black
1866-72F	13-14 KXF450	FLO Green



Vented for  
Airflow



Maximizes  
Cooling



Factory Look  
& Performance





MADE IN THE USA

KAWASAKI  
POWERFLOW SHROUDS

POWERFLOW

Kawasaki

**CYCRA**

**FCI**  
*Racing*  
FULL CROVEL INNOVATIONS

**EV4**  
**SRS**  
Motorsports

**KXF250**



# POWERFLOW TECHNOLOGY



**PATENTED BYPASS AIRFLOW**  
reduces radiator, fuel tank and cylinder head temperatures resulting in power gains





**1865-72 OEM GREEN**  
*2013-2015 KXF250*



**1865-42 WHITE**  
*2013-2015 KXF250*



**1865-12 BLACK**  
*2013-2015 KXF250*



**1865-72F FLO GREEN**  
*2013-2015 KXF250*

**KXF 250 POWERFLOW  
RADIATOR SHROUDS**

- Patented scoop for cooling efficiency & power gains
- Quality injection molded fit and finish for longer life
- One piece injection molded design

PART #	APPLICATION	COLOR
1865-72	13-14 KXF250	OEM Green
1865-42	13-14 KXF250	White
1865-12	13-14 KXF250	Black
1865-72F	13-14 KXF250	FLO Green





MADE IN THE USA

**KAWASAKI**  
PERFORMANCE FENDERS



Vented for  
Airflow



Reinforced  
Fender Brace



Quality Injection  
Molded Finish

# PERFORMANCE FRONT FENDERS

## ▶ **INTEGRATED FENDER BRACE TECHNOLOGY (IFB)**

reinforced shape that is stiffer than stock with  
a quality injection molded fit and finish



## ▶ **POWERFLOW AIR CHANNEL**

patented technology for increased  
airflow to radiator

1571-72 **GREEN**  
2013-2015 **KXF450/250**



ZACH AMES  
TEAM BABBITT'S KAWASAKI





**1571-42 WHITE**  
2013-2015 KXF450/250



**1571-72F FLO GREEN**  
2013-2015 KXF450/250



**1571-12 BLACK**  
2013-2015 KXF450/250

**KXF PERFORMANCE OEM  
FRONT FENDERS**

- Integrated Fender Brace (IFB) Technology
- Reinforced and Stiffer than stock
- Patented Powerflow channel for increased airflow to radiator
- Quality injection molded fit and finish

PART #	APPLICATION	COLOR
1571-72	2013-14 KXF 250/450	OEM Green
1571-42	2013-14 KXF 250/450	White
1571-12	2013-14 KXF 250/450	Black
1571-72F	2013-14 KXF 250/450	FLO Green
1510-12	2004-08 KXF 250/450	Black
1510-72	2004-08 KXF 250/450	OEM Green
1510-12	2003-08 KX 125/250	Black
1510-72	2003-08 KX 125/250	OEM Green



**1510-72 OEM GREEN**  
2003-2008 KXF450/250



**1510-12 BLACK**  
2004-2008 KXF450/250



Powerflow intake channel routes air to radiator



Integrated Fender Brace Tougher than Stock



MADE IN THE USA

KAWASAKI  
CYCRALITE FENDERS

# CYCRALITE FRONT FENDERS



Vented for  
Airflow



Maximizes  
Cooling



Factory Look  
& Performance



▶ **INTEGRATED FENDER BRACE TECHNOLOGY (IFB)**  
reinforced shape that is stiffer than stock with a quality injection molded fit and finish



▶ **VENTED BACK**  
provides 33% more airflow to radiator for maximum cooling efficiency

1571-72 GREEN  
2013-2015 KXF450/250





**1471-42 WHITE**  
2013-2015 KXF450/250



**1471-72F FLO GREEN**  
2013-2015 KXF450/250



**1471-12 BLACK**  
2013-2015 KXF450/250

**KXF CYCRALITE FRONT FENDERS**

- Integrated Fender Brace (IFB) Technology
- Reinforced and Stiffer than stock
- Patented Powerflow channel & vented back for max airflow
- Quality injection molded fit and finish

PART #	APPLICATION	COLOR
1471-72	2013-15 KXF 250/450	OEM Green
1471-42	2013-15 KXF 250/450	White
1471-12	2013-15 KXF 250/450	Black
1471-72F	2013-15 KXF 250/450	FLO Green
1410-12	2004-08 KXF 250/450	Black
1410-72	2004-08 KXF 250/450	OEM Green
1410-12	2003-08 KX 125/250	Black
1410-72	2003-08 KX 125/250	OEM Green



**1410-72 OEM GREEN**  
2003-2008 KXF450/250



**1410-12 BLACK**  
2003-2008 KXF450/250



Patented Powerflow intake scoop on 13-15 models



Integrated Fender Brace Tougher than Stock



MADE IN THE USA

KAWASAKI  
STADIUM PLATES

**ULTRA LIGHTWEIGHT**  
quality injection molded fit & finish

**PROTECTION**  
for triple clamps and fork  
mounts provided by  
extended legs



Ultra  
Lightweight



Added Cable  
Clearance



Protects  
Triple Clamp

# KXF STADIUM PLATES

## KXF FRONT STADIUM PLATES

- Extended Legs Protect Triple Clamp
- Ultra lightweight injection molded
- Added clearance for cables
- Cable Guide, crossbar strap and zipties Included

PART #	APPLICATIONS	COLOR
0700-12	13-15 KXF 450/250	Black
0700-42	13-15 KXF 450/250	White
0700-72	13-15 KXF 450/250	OEM Green
0700-72F	13-15 KXF 450/250	FLO Green

## CABLE GUIDES

- High quality injection molded
- Color match with graphic background
- All mounting hardware included

PART #	APPLICATION	COLOR
1235-42	All Cycra Stadium Plates	White
1235-12	All Cycra Stadium Plates	Black



0700-12 BLACK

0700-72 OEM GREEN

0700-42 WHITE

0700-72F FLO GREEN



# FORK GUARDS

- Reinforced to be tougher than stock
- Ultra high impact material
- Compatible with stock graphic templates
- CNC Machined mount points for strength, accuracy and easy installation

PART #	APPLICATION	COLOR
6903-12	09 - 15 KXF 250/450	Black
6903-42	09 - 15 KXF 250/450	White
6903-72	09 - 15 KXF 250/450	OEM Green
6903-72F	09 - 15 KXF 250/450	FLO Green



6903-72 OEM GREEN



6903-42 WHITE



6903-72F FLO GREEN



CNC Machined Mount Points



Reinforced Mounts for Start Devices



Factory Look & Performance

**KAWASAKI**  
FORK GUARDS / MUD FLAPS

MADE IN THE USA



# MUD FLAPS

- Quality injection molded fit and finish
- Ultra high impact material
- Lighter and more durable than stock
- Used by Factory Kawasaki Teams

PART #	APPLICATION	COLOR
38B 1-12	13-15 KXF 450	Black
3881-12	13-15 KXF 250	Black
3881-72	13-15 KXF 450	OEM Green
3881-72	13-15 KXF 250	OEM Green



3881-12 BLACK



3881-72 OEM GREEN



**PROTECT**  
rear shock better than stock

6903-12 BLACK

**REINFORCED**  
Ultra high impact material  
tougher than stock



Stronger than Stock



Protects Rear Shock



Factory Look & Performance



**CYCRA**

45



MADE IN THE USA

KAWASAKI  
SIDE PANELS

# SIDE NUMBER PANELS

**ULTRA LIGHTWEIGHT**  
quality injection molded fit  
& high gloss finish



2665-12 **BLACK**  
2013-2015 KXF450/250



2665-72 **OEM GREEN**  
2013-2015 KXF450/250



2665-42 **WHITE**  
2013-2015 KXF450/250



2665-72F **FLO GREEN**  
2013-2015 KXF450/250

- Ultra High Impact Materials
- Lighter than stock
- Quality injection molded fit and finish
- Factory look and performance

PART #	APPLICATIONS	COLOR
2665-12	13-15 KXF 450/250	Black
2665-42	13-15 KXF 450/250	White
2665-72	13-15 KXF 450/250	OEM Green
2665-72F	13-15 KXF 450/250	FLO Green

-  Strong High Impact Material
-  Lighter Than Stock
-  Factory Look & Performance



## KXF POWERFLOW REAR FENDERS

- Ultra high impact material
- Quality injection molded fit and finish
- Powerflow channels route clean air to airbox
- Compatible with stock graphic templates

PART #	APPLICATION	COLOR
1711-12	09 - 15 KXF 250/450	Black
1711-42	09 - 15 KXF 250/450	White
1711-72	09 - 15 KXF 250/450	OEM Green
1711-72F	09 - 15 KXF 250/450	FLO Green
1710-72	06 - 08 KXF 250/450	OEM Green



Compatible with stock graphic template

**POWERFLOW CHANNELS**  
for increased airflow to the airbox



1711-72 **OEM GREEN**  
2009-2015 KXF450/250



1711-42 **WHITE**  
2009-2015 KXF450/250



1711-72F **FLO GREEN**  
2009-2015 KXF450/250



1711-12 **BLACK**  
2009-2015 KXF450/250



1710-72 **OEM GREEN**  
2006-2008 KXF450/250

KAWASAKI  
REAR FENDERS

MADE IN THE USA



# POWERFLOW REAR FENDERS



Vented for Airflow



Ultra High Impact Material



Factory Look & Performance





MADE IN THE USA

KAWASAKI  
FULL ARMOR SKID PLATES

MENTHAL  
CHAINWHEELS

H  
HINSON  
CUSTOM COMPONENTS  
PARTS



Protects Frame & Vital Engine Parts



Lightweight & Shock Resistant



Slim Form Fitted Design

# FULL ARMOR SKID PLATES

ALLOY  
front mounting bracket



- Slim design form fitted to frame and cases
- Lightweight, durable, and shock resistant
- Protection for frame and vital engine components
- Allows bike frame to flex unlike many alloy skid plates
- Developed by today's top teams

**SHOCK RESISTANT**  
& allows bike frame to flex  
unlike many alloy skid plates

PART #	KXF APPLICATIONS	COLOR
6208-72	2009-15 KXF 250	OEM Green
6210-72	2009-15 KXF 450	OEM Green
6208-80	2009-15 KXF 250	Grey
6210-80	2009-15 KXF 450	Grey
6208-12	2009-15 KXF 250	Black
6210-12	2009-15 KXF 450	Black
6208-72F	2009-15 KXF 250	FLO Green
6210-72F	2009-15 KXF 450	FLO Green



62XX-80 GREY



62XX-12 BLACK



62XX-72 GREEN



## SPEED ARMOR SKID PLATES

- Available for most 2 and 4 stroke applications
- Protection for motor and lower frame rails
- Allows the frame to flex and don't have ridged feel of an aluminum plate
- Injection molded high impact material for toughness
- No additional clamps or hardware needed
- Quick and easy access for Oil Changes
- Developed on the National Outdoor Motocross & Cross Country series
- Includes: Speed Armor plate, lower frame tongue, & tie straps
- Easy Installation takes seconds
- 100% recyclable

PART #	APPLICATION	COLOR
6019-12	2009-15 KXF450	Black
6019-72	2009-15 KXF450	Green
6019-80	2009-15 KXF450	Gray
6017-12	2010-15 KXF250	Black
6017-72	2010-15 KXF250	Green
6017-80	2010-15 KXF250	Gray
6018-12	2006-08 KXF450	Black
6018-72	2006-08 KXF450	Green
6018-80	2006-08 KXF450	Gray
6016-12	2006-08 KXF250	Black
6016-72	2006-08 KXF250	Green
6016-80	2006-08 KXF250	Gray
6100-12	Replacement Tie Straps	Black

ULTRA LIGHTWEIGHT



EASY INSTALL

Ultra High Tensile Strength Tie Straps secure the skid plate to your bike



60XX-12 BLACK



60XX-72 GREEN



60XX-80 GRAY

# SPEED ARMOR



Ultra Lightweight



Protection for Motor



Install in Seconds



**CYCRA**

49

**KAWASAKI**  
SPEED ARMOR SKID PLATES

MADE IN THE USA





### INDEPENDENT MOUNTS



0055 - 72X GREEN  
SEE PAGE 115



0225 - 72X GREEN  
SEE PAGE 116



0226 - 72 GREEN  
SEE PAGE 112

### WRAP AROUND SYSTEMS



740X - 72X GREEN  
SEE PAGE 102



7800 - 72 GREEN  
SEE PAGE 110



7X00 - 72 GREEN  
SEE PAGE 103



**MOTO STANDS**



**2037 - 72SE GREEN**  
SEE PAGE 125



**2037 - 72 GREEN**  
SEE PAGE 125



**2037 - 72WE GREEN**  
SEE PAGE 125



**2037 - 12 BLACK**  
SEE PAGE 125



**0001 - 72 GREEN**  
SEE PAGE 128



**0002 - 72 GREEN**  
SEE PAGE 128



**CYCRA TIEDOWNS**

**3081 - 72 GREEN**  
SEE PAGE 126



**KAWASAKI**  
MOTO GEAR

MADE IN THE USA



**MOTO GEAR**





MADE IN THE USA  
BODY WORK  
**KTM**



photo by JOHN BASHER

▶ **STADIUM**  
Front Number Plate



▶ Front Fender







▶ **POWERFLOW**  
Radiator Shrouds

▶ **POWERFLOW**  
Rear Fender

▶ Air Box Covers

Fork Guards

# KTM

## BODY WORK



**KTM**  
BODY WORK

MADE IN THE USA





MADE IN THE USA

**KTM**  
POWERFLOW BODY KITS

# POWERFLOW BODY KITS

JESSE NELSON  
TLD LUCAS OIL RED BULL KTM



Stadium Number Plate  
Lighter Than Stock  
Includes Cable Guide



Powerflow Intake Shrouds  
Reduce Radiator, Fuel Tank &  
Cylinder Head Temperatures



Powerflow Rear Fender  
Provides Clean Airflow  
to Airbox

## KTM POWERFLOW BODY KIT

- Includes Stadium Front Number Plate, Performance OE Front Fender, Powerflow Radiator Shrouds, Side Number Panels, Fork Guards, Powerflow Rear Fender

- All POWERFLOW components enhance cooling efficiency

PART #	APPLICATION	COLOR
9310-02	13-15 SX125-450/ XC150-500	Stock
9310-22	13-15 SX125-450/ XC150-500	Orange
9310-42	13-15 SX125-450/ XC150-500	White
9310-12	13-15 SX125-450/ XC150-500	Black



2013-2015  
9310-02 STOCK

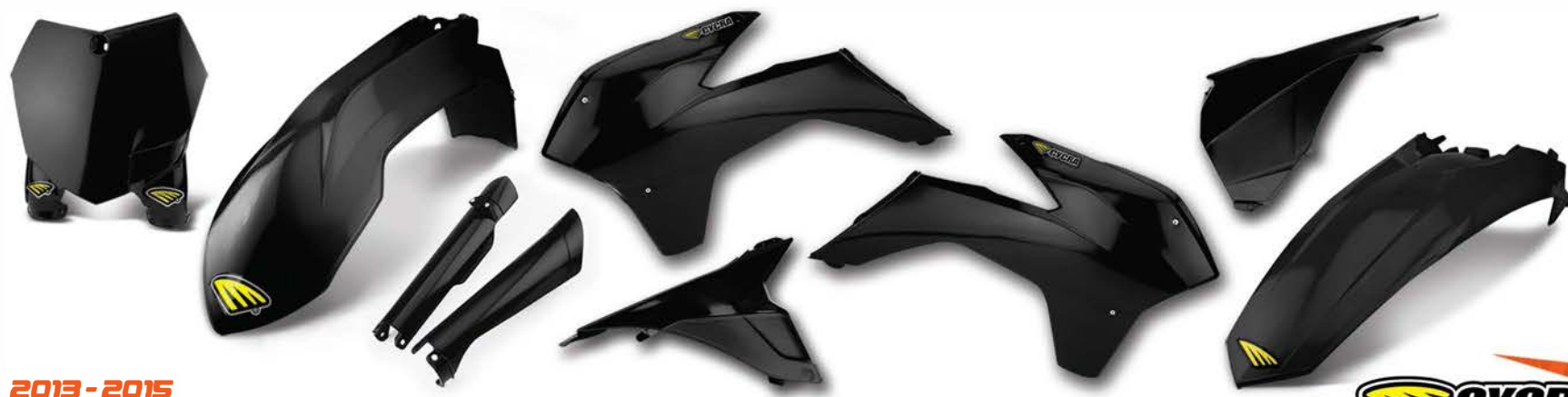




**2013-2015**  
9310-22 **ORANGE**



**2013-2015**  
9310-42 **WHITE**



**2013-2015**  
9310-12 **BLACK**







9309 - 22 **ORANGE**



9309 - 02 **STOCK**



9309 - 42 **WHITE**



9309 - 12 **BLACK**

**2011-2012**

**KTM POWERFLOW BODY KIT**

- Includes Stadium Front Number Plate, Performance OE Front Fender, Powerflow Radiator Shrouds, Side Number Panels, Fork Guards, Powerflow Rear Fender

- All POWERFLOW components maximize cooling efficiency

PART #	APPLICATION	COLOR
9309-02	11-12 SX125-525/XC200-530	Stock
9309-22	11-12 SX125-525/XC200-530	Orange
9309-42	11-12 SX125-525/XC200-530	White
9309-12	11-12 SX125-525/XC200-530	Black



Stadium Number Plate  
Lighter Than Stock  
Includes Cable Guide



Powerflow Intake Shrouds  
Reduce Radiator, Fuel Tank &  
Cylinder Head Temperatures



Powerflow Rear Fender  
Provides Clean Airflow  
to Airbox





9306-22 **ORANGE**



9306-02 **STOCK**



9306-42 **WHITE**



9306-12 **BLACK**

**2007-2010  
KTM POWERFLOW BODY KIT**

- Includes Stadium Front Number Plate, Performance OE Front Fender, Powerflow Radiator Shrouds, Side Number Panels, Fork Guards, Powerflow Rear Fender
- All POWERFLOW components maximize cooling efficiency

PART #	APPLICATION	COLOR
9309-02	07-10 SX125-525/08-10 XC200-530	Stock
9309-22	07-10 SX125-525/08-10 XC200-530	Orange
9309-42	07-10 SX125-525/08-10 XC200-530	White
9309-12	07-10 SX125-525/08-10 XC200-530	Black



Stadium Number Plate  
Lighter Than Stock  
Includes Cable Guide



Powerflow Intake Shrouds  
Reduce Radiator, Fuel Tank &  
Cylinder Head Temperatures



Powerflow Rear Fender  
Provides Clean Airflow  
to Airbox







**KTM**  
POWERFLOW SHROUDS  
MADE IN THE USA

-   
Vented for  
Airflow
-   
Maximizes  
Cooling
-   
Factory Look  
& Performance



## **POWERFLOW TECHNOLOGY**



**PATENTED BYPASS  
AIRFLOW**  
reduces radiator, fuel tank and  
cylinder head temperatures resulting  
in power gains

1899-22 **ORANGE**  
2013-2015





**1899-42 WHITE**  
*2013-2015*



**1896-42 WHITE**  
*2011-2012*



**1895-42 WHITE**  
*2007-2010*



**1899-12 BLACK**  
*2013-2015*



**1896-12 BLACK**  
*2011-2012*



**1895-12 BLACK**  
*2007-2010*

**KTM POWERFLOW INTAKE RADIATOR SHROUDS**

- Patented By-Pass Airflow Technology
- Reduces radiator, fuel tank and cylinder head temperatures
- Injection molded precise fit and high gloss finish
- Innovative patented design

PART #	APPLICATION	COLOR
1899-22	13-15 SX125-450/ XC150-500	Orange
1899-12	13-15 SX125-450/ XC150-500	Black
1899-42	13-15 SX125-450/ XC150-500	White
1896-22	11-12 SX125-525/ XC200-530	Orange
1896-12	11-12 SX125-525/ XC200-530	Black
1896-42	11-12 SX125-525/ XC200-530	White
1895-22	07-10 SX125-525/ 08-10 XC200-530	Orange
1895-12	07-10 SX125-525/ 08-10 XC200-530	Black
1895-42	07-10 SX125-525/ 08-10 XC200-530	White



**1896-22 ORANGE**  
*2011-2012*



Powerflow [2011 - 12]



**1895-22 ORANGE**  
*2007-2010*



Powerflow [2007 - 10]





MADE IN THE USA

KTM  
STADIUM NUMBER PLATES



Ultra  
Lightweight



Protects  
Triple Clamp



Added Cable  
Clearance

# STADIUM PLATES



**ULTRA LIGHTWEIGHT**  
quality injection molded fit & finish

**PROTECTION**  
for triple clamps and fork  
mounts provided by  
extended legs

**ADDED CLEARANCE**  
for cables



0802-22 **ORANGE**  
2013-2015 SX/SXF



0802-42 **WHITE**  
2013-2015 SX/SXF



0802-12 **BLACK**  
2013-2015 SX/SXF

- Extended Legs Protect Triple Clamp (13-15 applications)
- Ultra lightweight injection molded
- Added clearance for cables (13-15 applications)
- Integrated cable guide and crossbar strap
- Factory look with 3 available color ways
- Proudly made in the USA

PART #	APPLICATIONS	COLOR
0802-22	13-15 SX/SXF 125 - 450	Orange
0802-42	13-15 SX/SXF 125 - 450	White
0802-12	13-15 SX/SXF 125 - 450	Black
0800-22	07-12 SX/SXF 125 - 530	Orange
0800-42	07-12 SX/SXF 125 - 530	White
0800-12	07-12 SX/SXF 125 - 530	Black



0800-22 **ORANGE**  
2007-2012 SX/SXF



0800-42 **WHITE**  
2007-2012 SX/SXF



0800-12 **BLACK**  
2007-2012 SX/SXF

60







6905-12 **BLACK**  
2015 SX/XC



6905-42 **WHITE**  
2015 SX/XC



6905-22 **ORANGE**  
2015 SX/XC



6902-12 **BLACK**  
2001-2014 SX/XC



6902-42 **WHITE**  
2001-2014 SX/XC



6902-22 **ORANGE**  
2001-2014 SX/XC

# FORK GUARDS

- High impact material that is tougher than stock
- Reinforced mount holes and works with start buttons
- Open back for easy cleaning and quick change
- Factory look with 3 available color ways
- Quality injection molded fit and finish

PART #	APPLICATION	COLOR
6905-22	2015 SX/XC 125-500	Orange
6905-42	2015 SX/XC 125-500	White
6905-12	2015 SX/XC 125-500	Black
6902-22	2001-2014 SX/XC 125-500	Orange
6902-42	2001-2014 SX/XC 125-500	White
6902-12	2001-2014 SX/XC 125-500	Black



Quality injection molded fit and gloss finish



Open back for easy cleaning and quick change outs



CNC machined mount holes for strength and accuracy



**KTM**  
FORK GUARDS

MADE IN THE USA



**CYCRA**





MADE IN THE USA

**KTM**  
PERFORMANCE FENDERS



Vented for Airflow



Reinforced Fender Brace

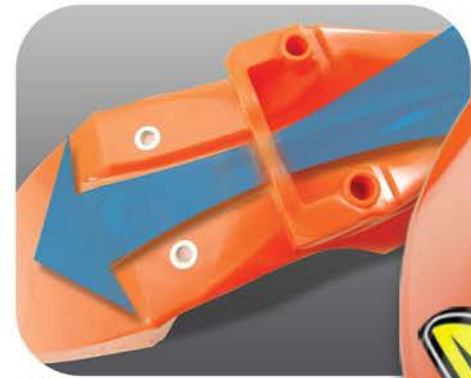


Quality Injection Molded Finish

# PERFORMANCE FRONT FENDERS



▶ **INTEGRATED FENDER BRACE TECHNOLOGY (IFB)**  
reinforced shape that is stiffer than stock with a quality injection molded fit and finish



▶ **POWERFLOW AIR CHANNEL**  
patented technology for increased airflow to radiator



1542-22 **ORANGE**  
2013-2015





1542-12 **BLACK**  
2013-2015



1542-22 **ORANGE**  
2013-2015



1542-42 **WHITE**  
2013-2015



1541-12 **BLACK**  
2007-2012



1541-22 **ORANGE**  
2007-2012



1541-42 **WHITE**  
2007-2012

**KTM PERFORMANCE OEM FRONT FENDERS**

- Integrated Fender Brace (IFB) Technology
- Reinforced and Stiffer than stock
- Patented Powerflow channel for increased airflow to radiator
- Quality injection molded fit and finish
- Applications with fender bracket included allow for updated Cycra look on older model bikes

PART #	OEM APPLICATION	COLOR
1542-12	13-15 KTM SX/XC 125 - 500	Black
1542-22	13-15 KTM SX/XC 125 - 500	Orange
1542-42	13-15 KTM SX/XC 125 - 500	White
<b>1542 APPLICATIONS WITH FENDER BRACKET ADAPTER KIT</b>		
1542-12K	02-12 KTM SX/XC 125 - 530	Black
1542-22K	02-12 KTM SX/XC 125 - 530	Orange
1542-42K	02-12 KTM SX/XC 125 - 530	White
KTM-AOP	FENDER ADAPTER KIT ONLY	Black
PART #	OEM APPLICATION	COLOR
1541-12	07-12 KTM SX/ 08-12 XC 125 - 500	Black
1541-22	07-12 KTM SX/ 08-12 XC 125 - 500	Orange
1541-42	07-12 KTM SX/ 08-12 XC 125 - 500	White
1540-22	03-06 KTM SX/ 03-07 XC 125 - 500	Orange



1540-22 **ORANGE**  
2003-2006



Update older model KTMs with the newest Cycra look!

**KTM - ADP BRACKET KIT**  
SOLO SEPERATELY OR INCLUDED WITH ALL  
**1542-XXK APPLICATIONS**  
2002-2012





MADE IN THE USA

KTM  
CYCRALITE FENDERS



Vented for  
Airflow



Maximizes  
Cooling



Factory Look  
& Performance

# CYCRALITE FRONT FENDERS



▶ **INTEGRATED FENDER BRACE TECHNOLOGY (IFB)**  
reinforced shape that is stiffer than stock with a quality injection molded fit and finish



▶ **VENTED BACK**  
provides 33% more airflow to radiator for maximum cooling efficiency

1442-22 **ORANGE**  
2013-2015





1442-12 **BLACK**  
2013-2015



1442-22 **ORANGE**  
2013-2015



1442-42 **WHITE**  
2013-2015



1441-12 **BLACK**  
2007-2012



1441-22 **ORANGE**  
2007-2012



1441-42 **WHITE**  
2007-2012

**KTM CYCRALITE  
FRONT FENDERS**

- Integrated Fender Brace (IFB) Technology
- Reinforced and Stiffer than stock
- Patented Powerflow channel and vented back for max air flow
- Quality injection molded fit and finish
- Applications with fender bracket included allow for updated Cycra look on older model bikes

PART #	OEM APPLICATION	COLOR
1442-12	13-15 KTM SX/XC 125 - 500	Black
1442-22	13-15 KTM SX/XC 125 - 500	Orange
1442-42	13-15 KTM SX/XC 125 - 500	White
<b>1442 APPLICATIONS WITH FENDER BRACKET ADAPTER KIT</b>		
1442-12K	02-12 KTM SX/XC 125 - 530	Black
1442-22K	02-12 KTM SX/XC 125 - 530	Orange
1442-42K	02-12 KTM SX/XC 125 - 530	White
KTM-AOP	FENDER ADAPTER KIT ONLY	Black
PART #	OEM APPLICATION	COLOR
1441-12	07-12 KTM SX/ 08-12 XC 125 - 500	Black
1441-22	07-12 KTM SX/ 08-12 XC 125 - 500	Orange
1441-42	07-12 KTM SX/ 08-12 XC 125 - 500	White
1440-22	03-06 KTM SX/ 03-07 XC 125 - 500	Orange



1440-22 **ORANGE**  
2003-2006



Update older model KTM's with the newest Cycra look!

**NEW** KTM - ADP **BRACKET KIT**  
SOLO SEPERATELY OR INCLUDED WITH ALL  
**1442-XXK APPLICATIONS**  
2002-2012





**KTM**  
REAR FENDERS  
MADE IN THE USA



Vented for  
Airflow



Reinforced  
Sides & Handles



Slimmer  
than Stock

# POWERFLOW REAR FENDERS



▶ **POWERFLOW AIR CHANNELS**  
for increased airflow  
to the airbox



▶ **1/2 INCH NARROWER**  
than stock for a slimmer look

▶ **SUPER REINFORCED**  
sides & handles to resist breaking





**0802-22 ORANGE**  
2013-2015 SX/SXF



**0802-42 WHITE**  
2013-2015 SX/SXF



**0802-12 BLACK**  
2013-2015 SX/SXF



**0800-22 ORANGE**  
2007-2012 SX/SXF



**0800-42 WHITE**  
2007-2012 SX/SXF



**0800-12 BLACK**  
2007-2012 SX/SXF

**KTM POWERFLOW  
REAR FENDERS**

- Powerflow vents allow clean airflow to airbox
- 1/2 inch narrower than stock for a slimmer feel
- Super reinforced sides and handles
- Matches OEM stock shape for graphic template
- Quality injection molded fit and finish
- Factory look with 3 available color ways

PART #	APPLICATIONS	COLOR
1741-22	11-15 SX/XC 125 - 505	Orange
1741-42	11-15 SX/XC 125 - 505	White
1741-12	11-15 SX/XC 125 - 505	Black
1740-22	07-10 SX/08-10 XC 125-530	Orange
1740-42	07-10 SX/08-10 XC 125-530	White
1740-12	07-10 SX/08-10 XC 125-530	Black





MADE IN THE USA

**KTM**  
MUD FLAPS



Protects  
Rear Shock



Stronger  
than Stock



Factory Look  
& Performance

# MUD FLAPS

## KTM MUD FLAPS

- Quality injection molded fit and finish
- Ultra high impact material
- Lighter and more durable than stock
- Used by Factory KTM Teams

PART #	APPLICATION	COLOR
3876-12	07-15 SX 125-525	Black
3876-12	08-15 XC 200-530	Black
3876-22	07-15 SX 125-525	Orange
3876-22	08-15 XC 200-530	Orange



**PROTECT**  
rear shock better than stock



3876-12 **BLACK**



3876-22 **ORANGE**



## SPEED ARMOR SKID PLATES

- Available for most 2 and 4 stroke applications
- Protection for motor and lower frame rails
- Allow the frame to flex and don't have ridged feel of an aluminum plate
- Injection molded high impact material for toughness
- No additional clamps or hardware needed
- Quick and easy access for Oil Changes
- Developed on the National Outdoor Motocross & Cross Country series
- Includes: Speed Armor plate, lower frame tongue, & tie straps
- Easy Installation takes seconds
- 100% recyclable

PART #	APPLICATION	COLOR
6020-12	2007-15 KTM 2 - Stroke	Black
6020-22	2007-15 KTM 2 - Stroke	Orange
6020-80	2007-15 KTM 2 - Stroke	Gray
6021-12	2007-15 KTM 4 - Stroke	Black
6021-22	2007-15 KTM 4 - Stroke	Orange
6021-80	2007-15 KTM 4 - Stroke	Gray
6100-12	Replacement Tie Straps	Black

**ULTRA LIGHTWEIGHT**



**EASY INSTALL**

Ultra High Tensile Strength Tie Straps secure the skid plate to your bike



60XX-12 BLACK



60XX-22 ORANGE



60XX-80 GRAY

# SPEED ARMOR



Ultra Lightweight



Protection for Motor



Install in Seconds

**CYCRA**

69

**KTM**  
SPEED ARMOR SKID PLATES

MADE IN THE USA





MADE IN THE USA

**KTM**  
FULL ARMOR SKID PLATES



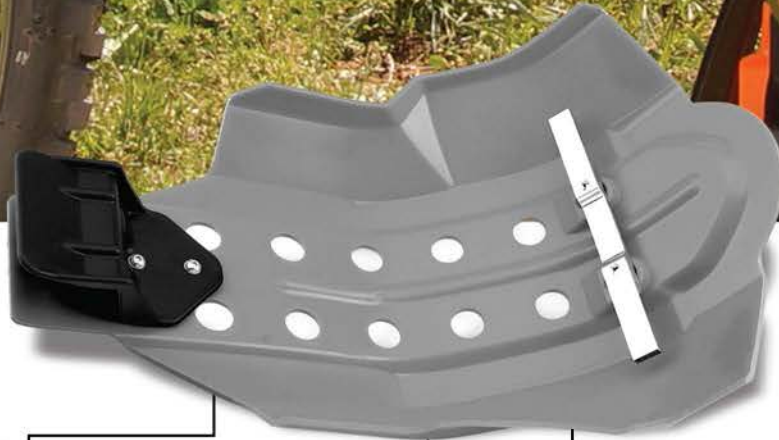
Protects Frame & Vital Engine Parts



Lightweight & Shock Resistant



Slim Form Fitted Design



**TONGUE**  
keys into frame cross member

**SHOCK RESISTANT**  
& allows bike frame to flex unlike many alloy skid plates

**ALLOY**  
front mounting bracket

# FULL ARMOR SKID PLATES

- Slim design form fitted to frame and cases
- Lightweight, durable, and shock resistant
- Protection for frame and vital engine components
- Allows bike frame to flex unlike many alloy skid plates
- Developed by today's top teams

PART #	KTM APPLICATIONS	COLOR
6214-12	2013-15 SXF 450-500	Black
6214-22	2013-15 SXF 450-500	Orange
6214-80	2013-15 SXF 450-500	Grey
6212-12	2013-15 SXF 250-300	Black
6212-22	2013-15 SXF 250-300	Orange
6212-80	2013-15 SXF 250-300	Grey
6202-12	2011-12 SXF 350	Black
6202-22	2011-12 SXF 350	Orange
6202-80	2011-12 SXF 350	Grey
6202-12	2008-12 SXF 250	Black
6202-22	2008-12 SXF 250	Orange
6202-80	2008-12 SXF 250	Grey



6202-80 GREY



6202-12 BLACK



6202-22 ORANGE

70







PART #	KTM APPLICATIONS	COLOR
6215-12	2013-15 SXF 250-300	Black
6215-22	2013-15 SXF 450-500	Orange
6215-80	2013-15 SXF 250-300	Grey
6213-12	2013-15 SXF 450-500	Black
6213-22	2013-15 SXF 250-300	Orange
6213-12	2013-15 SXF 450-500	Grey



621X-80 GRAY



621X-12 BLACK



621X-22 ORANGE



- Extended Full Coverage design form fitted to frame and cases
- Ultra high impact, durable, and shock resistant
- Protection for frame and vital engine components
- Stay in place dual bracket system
- Quick and easy installation

**EXTENDED COVERAGE**  
*Full wrap around protection with  
 secure dual bracket system*



# FULL COMBAT SKID PLATES



Added Coverage



Protection for Motor



High Impact Materials





## INDEPENDENT MOUNTS



0055 - 22X **ORANGE**  
SEE PAGE 115



0225 - 22X **ORANGE**  
SEE PAGE 116



0226 - 22 **ORANGE**  
SEE PAGE 112

## WRAP AROUND SYSTEMS



740X - 22X **ORANGE**  
SEE PAGE 102



7800 - 22 **ORANGE**  
SEE PAGE 110



7X00 - 22 **ORANGE**  
SEE PAGE 103



**MOTO STANDS**



**2037 - 22SE ORANGE**  
SEE PAGE 125



**2037 - 22 ORANGE**  
SEE PAGE 125



**2037 - 22WE ORNG**  
SEE PAGE 125



**2037 - 12 BLACK**  
SEE PAGE 125



**0001 - 22 ORANGE**  
SEE PAGE 128



**0002 - 22 ORANGE**  
SEE PAGE 128



**CYCRA TIEDOWNS**

**3081 - 22 ORANGE**  
SEE PAGE 126



**RTM**  
MOTO GEAR

MADE IN THE USA



**MOTO GEAR**







MADE IN THE USA

YAMAHA  
BODY WORK



STADIUM  
Front Number Plate



Front Fender



74 CYCRA





**POWERFLOW**  
Radiator Shrouds

**POWERFLOW**  
Rear Fender

Side Panels

Fork Guards

Skid Plate

# YAMAHA

## BODY WORK



YAMAHA  
BODY WORK

MADE IN THE USA





photo by STEVE COX

# POWERFLOW BODY KITS



**JOSH GRANT**  
JGRMX TOYOTA YAMAHA

YAMAHA  
POWERFLOW BODY KITS  
MADE IN THE USA



Vented for Airflow



Quality Injection Molded Finish



Factory Look & Performance



Stadium Number Plate  
Lighter Than Stock  
Includes Cable Guide



Powerflow Intake Shrouds  
Reduce Radiator, Fuel Tank & Cylinder Head Temperatures



Powerflow Rear Fender  
Provides extra clearance for lower sub frames

## YZF POWERFLOW BODY KIT

- Includes Stadium Front Number Plate, Performane Front Fender, Powerflow Radiator Shrouds, Airbox Cover, Side Number Panels, Fork Guards, Powerflow Rear Fender

- All POWERFLOW components enhance cooling efficiency

PART #	APPLICATION	COLOR
9312-02	14-15 YZF 450/250	Stock
9312-42	14-15 YZF 450/250	White
9312-62	14-15 YZF 450/250	Blue
9312-12	14-15 YZF 450/250	Black
9312-66	14-15 YZF 450/250	Lightning Gold







2014-2015 YZF  
9312-42 **WHITE**



2014-2015 YZF  
9312-62 **BLUE**



2014-2015 YZF  
9312-12 **BLACK**



2014-2015 YZF  
9312-66 **LIGHTNING GOLD**



Get the retro Yamaha look with the Powerflow lightning gold body kit





MADE IN THE USA

YAMAHA  
POWERFLOW BODY KITS



9313 - 62 **BLUE**



9313 - 02 **STOCK**



9313 - 42 **WHITE**



9313 - 12 **BLACK**



### 2010-2013 YZF POWERFLOW BODY KIT

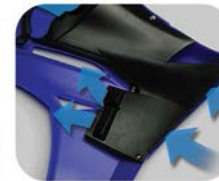
- Includes Stadium Front Number Plate, Performance OE Front Fender, Powerflow Radiator Shrouds, Side Number Panels, Fork Guards, Powerflow Rear Fender

- All POWERFLOW components maximize cooling efficiency

PART #	APPLICATION	COLOR
9313-02	2010-13 YZF450	Stock
9313-62	2010-13 YZF450	Blue
9313-42	2010-13 YZF450	White
9313-12	2010-13 YZF450	Black



Stadium Number Plate  
Lighter Than Stock  
Includes Cable Guide



Powerflow Intake Shrouds  
Reduce Radiator, Fuel Tank &  
Cylinder Head Temperatures



Powerflow Rear Fender  
Provides Clean Airflow  
to Airbox





9305-62 **BLUE**



9305-02 **STOCK**



9305-42 **WHITE**



9305-12 **BLACK**

### 2006-2009

#### YZF-POWERFLOW BODY KIT

- Includes Stadium Front Number Plate, Performance OE Front Fender, Powerflow Radiator Shrouds, Side Number Panels, Fork Guards, Powerflow Rear Fender

- All POWERFLOW components maximize cooling efficiency

PART #	APPLICATION	COLOR
9305-02	2006-09 YZF450/250	Stock
9305-62	2006-09 YZF450/250	Blue
9305-42	2006-09 YZF450/250	White
9305-12	2006-09 YZF450/250	Black



Stadium Number Plate  
Lighter Than Stock  
Includes Cable Guide



Powerflow Intake Shrouds  
Reduce Radiator, Fuel Tank &  
Cylinder Head Temperatures



Powerflow Rear Fender  
Provides Clean Airflow  
to Airbox







YAMAHA  
POWERFLOW SHROUDS  
MADE IN THE USA



2014-2015 Powerflow Shrouds come with RED baffle



Vented for Airflow



Maximizes Cooling



Factory Look & Performance

# POWERFLOW TECHNOLOGY



**PATENTED BYPASS AIRFLOW**  
reduces radiator, fuel tank and cylinder head temperatures resulting in power gains

1778-12 **BLACK**  
2014-15 **YZF**

80







**1778-62 BLUE**  
**2014-15 YZF**



**1778-42 WHITE**  
**2014-15 YZF**



**1778-66 GOLD**  
**2014-15 YZF**



1777-62 BLUE

**1776-62 BLUE**  
**2014-15 YZF**



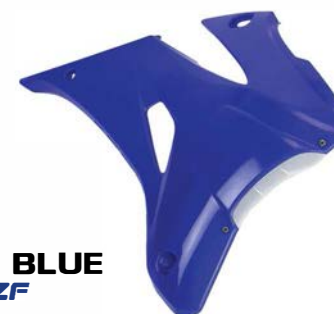
1777-42 WHITE

**1776-42 WHITE**  
**2014-15 YZF**



1777-12 BLACK

**1776-12 BLACK**  
**2014-15 YZF**



**1775-62 BLUE**  
**2014-15 YZF**



**1775-42 WHITE**  
**2014-15 YZF**



**1775-12 BLACK**  
**2014-15 YZF**

PART #	APPLICATION	COLOR
1778-62	2014-15 YZF 250/450	OEM Blue
1778-42	2014-15 YZF 250/450	White
1778-12	2014-15 YZF 250/450	Black
1778-66	2014-15 YZF 250/450	Lightning Gold
<b>APPLICATIONS WITHOUT AIRBOX COVER</b>		
1779-64	2014-15 YZF 250/450	OEM Blue
1779-42	2014-15 YZF 250/450	White
1779-12	2014-15 YZF 250/450	Black
1779-66	2014-15 YZF 250/450	Lightning Gold
<b>AIRBOX COVER ONLY APPLICATIONS</b>		
1780-62	2014-15 YZF 250/450	OEM Blue
1780-42	2014-15 YZF 250/450	White
1780-12	2014-15 YZF 250/450	Black
1780-66	2014-15 YZF 250/450	Lightning Gold

PART #	2010 - 13 APPLICATIONS	COLOR
1776-62	2010-13 YZF 450	OEM Blue
1776-42	2010-13 YZF 450	White
1776-12	2010-13 YZF 450	Black
<b>TANK COVERS</b>		
1777-62	2010-13 YZF 450	OEM Blue
1777-42	2010-13 YZF 450	White
1777-12	2010-13 YZF 450	Black
<b>2006 - 09 APPLICATIONS</b>		
1775-62	2006-09 YZF 250/450	OEM Blue
1775-42	2006-09 YZF 250/450	White
1775-12	2006-09 YZF 250/450	Black

**YZF POWERFLOW RADIATOR SHROUDS**

- Dramatically "narrows" the space between riders leg and knee area for better ergonomics and prevents boot snag
- One piece design for easier graphics installation
- Patented scoop for cooling efficiency & power gains
- By-Pass Airflow Technology, 40% airflow increase to airbox
- Includes Airbox Cover and plugs (will not work with DE cover)
- Air Box Cover Lid mates to PowerFlow Shrouds
- Integration of forced air inlets into the air box cover allows additional air intake
- Stronger and lighter than stock





MADE IN THE USA

YAMAHA  
STADIUM NUMBER PLATES

photo by STEVE COX

JUSTIN BRAYTON  
JGR TOYOTA N-FAB YAMAHA



Ultra  
Lightweight



Protects  
Triple Clamp



Added Cable  
Clearance



# STADIUM PLATES

**ADDED CLEARANCE**  
for cables

**PROTECTION**  
for triple clamps and fork mounts  
provided by extended legs

82







0990-62 **BLUE**  
2010-2015 YZ/YZF



0990-42 **WHITE**  
2010-2015 YZ/YZF



0990-12 **BLACK**  
2010-2015 YZ/YZF



0990-66 **LIGHTNING GOLD**  
2010-2015 YZ/YZF



0900-62 **BLUE**  
2006-2009 YZF



0900-42 **WHITE**  
2006-2009 YZF



0900-12 **BLACK**  
2006-2009 YZF



**CABLE GUIDES**

- High quality injection molded
- Color match with graphic background
- All mounting hardware included

PART #	APPLICATION	COLOR
1235-42	All Cycra Stadium Plates	White
1235-12	All Cycra Stadium Plates	Black

**YAMAHA STADIUM PLATES**

- Extended Legs Protect Triple Clamp [13-15 applications]
- Ultra lightweight injection molded
- Added clearance for cables [13-15 applications]
- Integrated cable guide and crossbar strap
- Factory look with 3 available color ways
- Compatible with stock graphic template
- Proudly made in the USA

PART #	APPLICATIONS	COLOR
0990-62	10-15 YZ125-250/YZF250-450	Blue
0990-42	10-15 YZ125-250/YZF250-450	White
0990-12	10-15 YZ125-250/YZF250-450	Black
0990-66	10-15 YZ125-250/YZF250-450	Lightning Gold
0900-62	06-09 YZF250/450	Blue
0900-42	06-09 YZF250/450	White
0900-12	06-09 YZF250/450	Black
0900-66	06-09 YZF250/450	Lightning Gold





MADE IN THE USA

YAMAHA  
PERFORMANCE FENDERS

photos by JAMES LISSIMORE



Vented for  
Airflow



Reinforced  
Fender Brace



Quality Injection  
Molded Finish

# PERFORMANCE FRONT FENDERS



**BOBBY KINIRY**  
OTSFF ROCKSTAR YAMAHA

**INTEGRATED FENDER BRACE  
TECHNOLOGY (IFB)**  
reinforced shape that is stiffer than stock with  
a quality injection molded fit and finish



**POWERFLOW AIR  
CHANNEL**  
patented technology for increased  
airflow to radiator

156X-62 **BLUE**  
2010-2015 YZF/1998-2015 YZ





**156X-42 WHITE**  
2010-2015 YZF / 1998-2015 YZ



**156X-66 GOLD**  
2010-2015 YZF / 1998-2015 YZ



**156X-12 BLACK**  
2010-2015 YZF / 1998-2015 YZ



**1531-42 WHITE**  
2006-2009 YZF / 2006-2008 YZ



**1531-62 BLUE**  
2006-2009 YZF / 2006-2008 YZ



**1531-12 BLACK**  
2006-2009 YZF / 2006-2008 YZ



4 Stroke Hole Pattern



2 Stroke Hole Pattern

**YAMAHA PERFORMANCE  
OEM FRONT FENDERS**

- Integrated Fender Brace (IFB) Technology
- Reinforced and Stiffer than stock
- Patented Powerflow channel for increased airflow to radiator
- 2-Stroke application available - *with the new design*
- Quality injection molded fit and finish



**1530-62 BLUE**  
1998-2005 YZ/YZF

PART #	OEM APPLICATION	COLOR
1562-62	98 - 15 YZ 125 / 250	Blue
1562-42	98 - 15 YZ 125 / 250	White
1562-66	98 - 15 YZ 125 / 250	Gold
1562-12	98 - 15 YZ 125 / 250	Black
1561-62	10 - 15 YZF 250 / 450	Blue
1561-42	10 - 15 YZF 250 / 450	White
1561-12	10 - 15 YZF 250 / 450	Black
1531-62	06-08 YZ 125/250 06-09 YZF 250/450	Blue
1531-42	06-08 YZ 125/250 06-09 YZF 250/450	White
1531-12	06-08 YZ 125/250 06-09 YZF 250/450	Black
1530-62	98-05 YZ 125/250 98-05 YZF 250/450	Blue





photo by STEVE COX

# CYCRALITE FRONT FENDERS



Vented for  
Airflow



Maximizes  
Cooling



Factory Look  
& Performance



JEREMY MARTIN  
**Star**  
RACING



### ▶ **INTEGRATED FENDER BRACE TECHNOLOGY (IFB)**

reinforced shape that is stiffer than stock with  
a quality injection molded fit and finish



▶ **VENTED BACK**  
provides 33% more airflow  
to radiator for maximum cooling  
efficiency



146X-62 **BLUE**  
2010-2015 YZF / 1998-2015 YZ





146X-42 **WHITE**  
2010-2015 YZF / 1998-2015 YZ



146X-66 **GOLD**  
2010-2015 YZF / 1998-2015 YZ



146X-12 **BLACK**  
2010-2015 YZF / 1998-2015 YZ



1431-42 **WHITE**  
2006-2009 YZF / 2006-2008 YZ



1431-62 **BLUE**  
2006-2009 YZF / 2006-2008 YZ



1431-12 **BLACK**  
2006-2009 YZF / 2006-2008 YZ



NEW Powerflow Scoop  
on 146X-XX applications



4 Stroke Hole Pattern



2 Stroke Hole Pattern



1430-62 **BLUE**  
1998-2005 YZ/YZF

PART #	DEM APPLICATION	COLOR
1462-62	98 - 15 YZ 125 / 250	Blue
1462-42	98 - 15 YZ 125 / 250	White
1462-12	98 - 15 YZ 125 / 250	Black
1461-62	10 - 15 YZF 250 / 450	Blue
1461-42	10 - 15 YZF 250 / 450	White
1461-66	10 - 15 YZF 250 / 450	Gold
1461-12	10 - 15 YZF 250 / 450	Black
1431-62	06-08 YZ 125/250 06-09 YZF 250/450	Blue
1431-42	06-08 YZ 125/250 06-09 YZF 250/450	White
1431-12	06-08 YZ 125/250 06-09 YZF 250/450	Black
1430-62	98-05 YZ 125/250 98-05 YZF 250/450	Blue

## YAMAHA CYCRALITE FRONT FENDERS

- Integrated Fender Brace (IFB) Technology
- Reinforced and Stiffer than stock
- Patented Powerflow channel for increased airflow to radiator
- Vented back section for maximum air flow
- 2-Stroke application available - *with the new design*
- Quality injection molded fit and finish



MADE IN THE USA

YAMAHA  
REAR FENDERS



Vented for  
Airflow



Reinforced  
Sides & Handles



Added Tire  
Clearance

# POWERFLOW REAR FENDERS

PHIL NICOLETTI  
JGR TOYOTA N-FAB YAMAHA

photo by STEVE COX



▶ **POWERFLOW AIR CHANNELS**  
for increased airflow  
to the airbox



▶ **ADDED TIRE CLEARANCE**  
for supercross and mx lowered subframes



▶ **SUPER REINFORCED**  
sides & handles to resist breaking





**2014-2015**



1513-42 **WHITE**

1513-62 **BLUE**

1513-12 **BLACK**

1513-66 **GOLD**

**2010-2013**



1512-42 **WHITE**

1512-62 **BLUE**

1512-12 **BLACK**

**2006-2009**



1511-42 **WHITE**

1511-62 **BLUE**

1511-12 **BLACK**



Get the retro look with the NEW lightning gold color option



Added clearance for lower subframes

**YAMAHA POWERFLOW REAR FENDERS**

- Powerflow vents allow clean airflow to airbox
- Provides extra clearance for lower subframes
- Lighter weight and reinforced in critical areas
- Matches OEM stock shape
- Quality injection molded fit and finish

PART #	APPLICATION	COLOR
1513-62	14 - 15 YZF250/450	Blue
1513-42	14 - 15 YZF250/450	White
1513-12	14 - 15 YZF250/450	Black
1513-66	14 - 15 YZF250/450	Gold
1512-62	10 - 13 YZF 450	Blue
1512-42	10 - 13 YZF 450	White
1512-12	10 - 13 YZF 450	Black
1511-62	06 - 09 YZF 250/450	Blue
1511-42	06 - 09 YZF 250/450	White
1511-12	06 - 09 YZF 250/450	Black





MADE IN THE USA

YAMAHA  
SIDE PANELS



# SIDE NUMBER PANELS



Lighter Than Stock



Added Coverage



Factory Look & Performance



▶ **ULTRA LIGHTWEIGHT**  
lighter and stronger than stock

▶ **ADDED COVERAGE**  
around subframe area



▶ **SIDE INTAKE**  
vent for improved airflow

2776-42 **WHITE**  
2014-2015

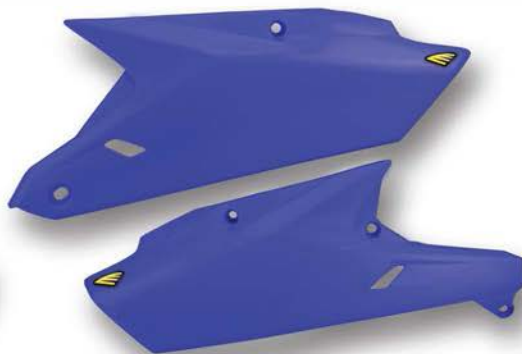
90







**2776-12 BLACK**  
**2014-2015**



**2776-62 BLUE**  
**2014-2015**



**2776-66 LIGHTNING GOLD**  
**2014-2015**



**2774-01 WHITE**  
**2010-2013**

**YZF SIDE NUMBER PANELS**

- Quality injection molded fit and finish
- Lighter than stock panels
- Tough one peice construction
- Additional coverage around subframe area
- Vented for airflow

PART #	APPLICATION	COLOR
2776-62	2014-15 YZF 250/450	OEM Blue
2776-42	2014-15 YZF 250/450	White
2776-12	2014-15 YZF 250/450	Black
2776-66	2014-15 YZF 250/450	Lightning Gold
2774-01	2010-13 YZF 450	OEM White/Black
2775-62	2006-09 YZF 250/450	OEM Blue
2775-42	2006-09 YZF 250/450	White
2775-12	2006-09 YZF 250/450	Black



**2775-12 BLACK**  
**2006-2009**



**2775-62 BLUE**  
**2006-2009**



**2775-42 WHITE**  
**2006-2009**



MADE IN THE USA

YAMAHA  
FORK GUARDS

photo by JAMES LISSIMORE

BOBBY KINIRY  
OSTFF ROCKSTAR ENERGY YAMAHA

# FORK GUARDS



Strong CNC Machined Mount Points



Reinforced Mounts for Start Devices



Factory Look & Performance

- High Quality Injection Molding for Precise Fit and Finish
- CNC machined mount points ensure strength & accuracy
- Reinforced mounts for start devices
- Factory look and performance
- Easy Installation
- Made in the USA

PART #	APPLICATION	COLOR
6901-62	2010-15 YZF 250/450	Blue
6901-66	2010-15 YZF 250/450	Gold
6901-12	2010-15 YZF 250/450	Black
6901-42	2010-15 YZF 250/450	White



6901-12 BLACK



6901-42 WHITE



6901-62 BLUE



6901-66 LIGHTNING GOLD



# DISC COVERS

- Number one choice of Factory Yamaha riders
- Quality injection molded fit and finish
- Fits oversized and stock applications up to 280mm
- Protects brake rotor from rocks and debris
- Prolongs brake pad life



Protects brake rotor from rocks and debris



Prolongs life of break pads



109X-02 NATURAL



109X-12 BLACK



109X-42 WHITE

PART #	APPLICATION	COLOR
1099-02	05 - 07 YZ 125/250	Natural
1099-02	05 - 07 YZF 250/450	Natural
1099-42	05 - 07 YZ 125/250	White
1099-42	05 - 07 YZF 250/450	White
1093-02	08 - 15 YZ 125/250	Natural
1093-02	08 - 13 YZF 250/450	Natural
1093-12	08 - 15 YZ 125/250	Black
1093-12	08 - 13 YZF 250/450	Black
1093-42	08 - 15 YZ 125/250	White
1093-42	08 - 13 YZF 250/450	White

# MUD FLAPS

- Quality injection molded fit and finish
- Wider than stock to protect rear shock
- Used by Factory Yamaha riders



**PROTECT** rear shock better than stock



3879-62 BLUE  
2010-2015



3879-12 BLACK  
2010-2015



3877-62 BLUE  
2003-2009



3877-12 BLACK  
2003-2009

PART #	APPLICATION	COLOR
3879-62	2014-15 YZF 450	Blue
3879-12	2014-15 YZF 450	Black
3879-62	2010-15 YZF 250	Blue
3879-12	2010-15 YZF 250	Black
3877-62	04-14 YZ 125/250	Blue
3877-12	03-10 WR 250F/450F	Black
3877-62	03-09 YZF 250/450	Blue
3877-12	04-14 YZ 125/250	Black
3877-62	03-10 WR 250F/450F	Blue
3877-12	03-09 YZF 250/450	Black

YAMAHA  
DISC COVERS/MUD FLAPS

MADE IN THE USA





MADE IN THE USA

YAMAHA  
FULL ARMOR SKID PLATES



Protects Frame & Vital Engine Parts



Lightweight & Shock Resistant



Slim Form Fitted Design



# FULL ARMOR SKID PLATES

- Slim design form fitted to frame and cases
- Lightweight, durable, and shock resistant
- Protection for frame and vital engine components
- Allows bike frame to flex unlike many alloy skid plates
- Developed by today's top teams

PART #	YAMAHA APPLICATIONS	COLOR
6211-12	2014-15 YZF 250/450	Black
6211-62	2014-15 YZF 250/450	Blue
6211-80	2014-15 YZF 250/450	Grey
6211-66	2014-15 YZF 250/450	Gold
6206-12	2010-13 YZF 450	Black
6206-62	2010-13 YZF 450	Blue
6206-80	2010-13 YZF 450	Grey
6204-12	2010-13 YZF 250	Black
6204-62	2010-13 YZF 250	Blue
6204-80	2010-13 YZF 250	Grey



6211-66 GOLD



6211-80 GREY



6211-12 BLACK



6211-62 BLUE

ALLOY front mounting bracket



620X-80 GREY



620X-12 BLACK



620X-62 BLUE



## SPEED ARMOR SKID PLATES

- Available for most 2 and 4 stroke applications
- Protection for motor and lower frame rails
- Allow the frame to flex and don't have ridged feel of an aluminum plate
- Injection molded high impact material for toughness
- No additional clamps or hardware needed
- Quick and easy access for Oil Changes
- Developed on the National Outdoor Motocross & Cross Country series
- Includes: Speed Armor plate, lower frame tongue, & tie straps
- Easy Installation takes seconds
- 100% recyclable

**ULTRA LIGHTWEIGHT**



Ultra High Tensile Strength Tie Straps secure the skid plate to your bike

**EASY INSTALL**

PART #	APPLICATION	COLOR
6009-12	2010-15 YZF450	Black
6009-62	2010-15 YZF450	Blue
6009-80	2010-15 YZF450	Gray
6007-12	2010-15 YZF250	Black
6007-62	2010-15 YZF250	Blue
6007-80	2010-15 YZF250	Gray
6008-12	2006-09 YZF450	Black
6008-62	2006-09 YZF450	Blue
6008-80	2006-09 YZF450	Gray
6006-12	2006-09 YZF250	Black
6006-62	2006-09 YZF250	Blue
6006-80	2006-09 YZF250	Gray
6005-12	2005-14 YZ125/250	Black
6005-62	2005-14 YZ125/250	Blue
6005-80	2005-14 YZ125/250	Gray
6100-12	Replacement Tie Straps	Black



60XX-12 BLACK



60XX-62 BLUE



60XX-80 GRAY

# SPEED ARMOR SKID PLATES



Ultra Lightweight



Protection for Motor



Install in Seconds





### INDEPENDENT MOUNTS



0055 - 62X **BLUE**  
SEE PAGE 115



0225 - 62X **BLUE**  
SEE PAGE 116



0226 - 62 **BLUE**  
SEE PAGE 112

### WRAP AROUND SYSTEMS



740X - 62X **BLUE**  
SEE PAGE 102



7800 - 62 **BLUE**  
SEE PAGE 110



7X00 - 62 **BLUE**  
SEE PAGE 103



# MOTO STANDS



2037 - 62SE **BLUE**  
SEE PAGE 125



2037 - 62 **BLUE**  
SEE PAGE 125



2037 - 62WE **BLUE**  
SEE PAGE 125



2037 - 12 **BLACK**  
SEE PAGE 125



0001 - 62 **BLUE**  
SEE PAGE 128



0002 - 62 **BLUE**  
SEE PAGE 128



# CYCRA TIEDOWNS

3081 - 62 **BLUE**  
SEE PAGE 126



MADE IN THE USA  
**YAMAHA**  
MOTO GEAR



# MOTO GEAR



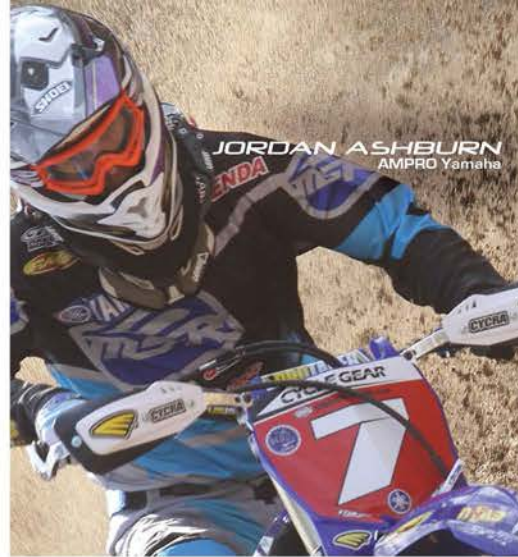


MADE IN THE USA

HANDGUARDS  
FACTORY PROTECTION



WALKER FOWLER  
AMPRO Yamaha ATV



JORDAN ASHBURN  
AMPRO Yamaha



**CRM Probend**

- Revolutionary Patent Pending Design
- 6061 Billet Aluminum Probend Bars and Mounts

MK / SK / XC / SM / ATV / SK

740X - 12X **BLACK**

SEE PAGE 102 - 105



JOSH STRANG  
2010 GNCC Champion



RYAN SIPES  
Rockstar Energy KTM



**CRM for FLEXX Bars**

- Trademark Probend Shape
- 6061 Billet Aluminum Probend Bars and Mounts

MK / SK / XC / SM / ATV / SK

7X00 - 12 **BLACK**

SEE PAGE 103



**Alloy Probend**

- Trademark Probend Shape
- 6061 Billet Aluminum Probend Bars and Mounts

MK / SK / XC / SM / ATV / SK

7500 - 12 **BLACK**

SEE PAGE 106 - 109

**PUNISH**



**THE COMPETITION**



THAD DUVALL  
Shenandoah Honda







**Series One Probend**  
 - Trademark Probend Shape  
 - Low profile design with inside beveled edges  
 MX / SK / XC / SM / ATV / SK  
 7800 - 12 **BLACK**  
 SEE PAGE 110



**Stealth Primal**  
 - Lightweight Composite Brackets  
 - Low Profile Handshield Design  
 MX / SK / XC / SM / ATV / SK  
 0055 - 12X **BLACK**  
 SEE PAGE 115



**M2 Recoil Vented**  
 - Patent Pending Recoil Technology  
 - Injection Molded Vented Handshield  
 MX / SK / XC / SM / ATV / SK  
 0225 - 12XVT **BLACK**  
 SEE PAGE 116



**Composite Probend**  
 - Trademark Probend Shape  
 - Full Wrap-Around Handguards  
 MX / SK / XC / SM / ATV / SK  
 7100 - 12 **BLACK**  
 SEE PAGE 111



**Stealth Alloy**  
 - Aircraft Quality 6061 Aluminum Brackets  
 - Low Profile Handshield Design  
 MX / SK / XC / SM / ATV / SK  
 0015 - 12X **BLACK**  
 SEE PAGE 115



**M2 Recoil Non-Vent**  
 - Patent Pending Recoil Technology  
 - Non-Vented Handshield  
 MX / SK / XC / SM / ATV / SK  
 0225 - 12X **BLACK**  
 SEE PAGE 116



**Rebound**  
 - Patented folding shield for those unexpected quick departures  
 - Great alternative to wrap around systems for woods or MX  
 MX / SK / XC / SM / ATV / SK  
 0226 - 12 **BLACK**  
 SEE PAGE 112 - 113



**Stealth DX**  
 - Aircraft Quality 6061 T-6 Aluminum Brackets  
 - In-Molded Rubber Edge Provides Increased Protection  
 MX / SK / XC / SM / ATV / SK  
 0025 - 12X **BLACK**  
 SEE PAGE 114



**M4 Recoil**  
 - Patent Pending Recoil Technology  
 - Maximum Coverage for Sport and Utility Quads  
 MX / SK / XC / SM / ATV / SK  
 0215 - 12X **BLACK**  
 SEE PAGE 117

# HANDGUARDS

HANDGUARD APPLICATION KEY:





MADE IN THE USA

HANDGUARDS  
PROBEND SYSTEMS

TRADEMARK  
PROBEND SHAPE

# PROBEND™



**PATENTED MOUNTING**  
CRM bar has a rise bent in to clear cables and hoses. Mounts to the handlebar hard up against the bar clamps where even tapered bars are straight. The clamps are beefy with four Allen bolts and a thick arm rising up to mount the Probend bar

Trademark Probend Shape

740X - 12X BLACK  
SEE PAGE 102 - 103

Patented CRM Probend Bars  
US PATENT 8.820.191

## CRM CENTER REACH MOUNT

Revolutionary designed **Center Reach Clamps** provide maximum bite to secure handguards and allows for superior clearance on a wide range of bars. For use with Probend CRM bars.

PROBEND CRM 7/8 CLAMPS  
1360 - 02 ALLOY  
SEE PAGE 119

PROBEND CRM 1 1/8 CLAMPS  
1361 - 02 ALLOY  
SEE PAGE 119

100

**CYCRA**

**CYCRA OPS EDITIONS  
+ FACTORY EDITIONS**

SEE PAGES 104 - 105 for CRM + 108 - 109 for PROBEND





# SYSTEMS

HANDGUARDS  
PROBEND SYSTEMS

MADE IN THE USA



## TRADEMARK BEND

Probend shape protects & dips at the outside end to let your hand come out easier in a fall.

## CHOOSE YOUR MOUNT

Probend and Series One allow rider to choose mounting option to customize handguard setup (sold seperately)

## SHALLOW BEND

new slight dip probend shape creates more protection for the side of the hand, while still allowing free movement.



7500 - 12 **BLACK**  
SEE PAGE 106 - 107



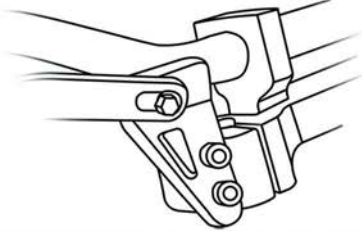
7800 - 12 **BLACK**  
SEE PAGE 110

## PROBEND

## SERIES ONE



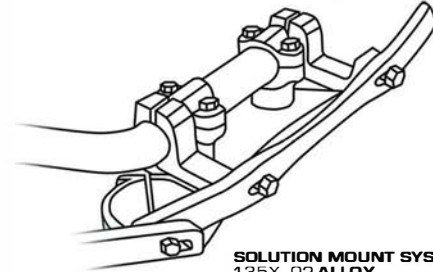
**U - CLAMP MOUNTS**  
115X - 02 **ALLOY**  
SEE PAGE 119



**TRIPLE CLAMP FRONT MOUNTS**  
1655 - 02 **ALLOY**  
SEE PAGE 119



**TRIPLE CLAMP SIDE MOUNTS**  
1055 - 02 **ALLOY**  
SEE PAGE 119



**SOLUTION MOUNT SYSTEM**  
135X - 02 **ALLOY**  
SEE PAGE 119





MADE IN THE USA

# HANDGUARDS PROBEND CRM



By mounting our handguards to the lower portion of the handlebar, we have simply eliminated the application variables. Resulting in a much easier handguard purchase process. With Cycra's superior materials, proprietary guard design, and proven clamp technology. It's obvious there is only **one clear choice in offroad handguards.**



Patented shape and design



High Impact Materials



Includes all Hardware

# PROBEND CRM



▶ **CENTER REACH MOUNTS (CRM)**  
provide maximum bite to secure handguards & allows for superior clearance on a wide range of bars



▶ **ALLOY BAR ENDS**  
Powerful grip that fits standard 7/8" and oversized bars

▶ **BUMPERS**  
Replaceable integrated plastic abrasion guards



Patented CRM Probend Bars  
US PATENT 8.820.191

6061 T-6 Billet Aluminum



## Probend CRM Handguard Complete Racer Packs

- CRM RACER PACKS INCLUDE: CRM Probend Bars, CRM Mount Clamps, Classic Enduro Shields, Powergrip Bar Ends, Probend Abrasion Guards
- Revolutionary Patent Pending Design & Trademark Probend Shape
- 6061 Billet Aluminum Probend Bars and Mounts
- Replaceable integrated plastic abrasion guards
- Center Reach Clamps provide maximum bite to secure handguards and allows for superior clearance on a wide range of bars
- Powergrip alloy bar ends fit standard 7/8" and oversized bars
- Recommended for Enduro, Supermoto, and ATV applications

MX / SK XC / SM ATV / SK

PART #	APPLICATION/COLOR
7401-02X	7/8" Bars - Natural Shields
7401-12X	7/8" Bars - Black Shields
7401-22X	7/8" Bars - Orange Shields
7401-32X	7/8" Bars - Red Shields
7401-42X	7/8" Bars - White Shields
7401-55X	7/8" Bars - Yellow Shields
7401-62X	7/8" Bars - Blue Shields
7401-72X	7/8" Bars - Green Shields
7401-88X	7/8" Bars - Husaberg Blue
7402-02X	1-1/8" Bars - Natural Shields
7402-12X	1-1/8" Bars - Black Shields
7402-22X	1-1/8" Bars - Orange Shields
7402-32X	1-1/8" Bars - Red Shields
7402-42X	1-1/8" Bars - White Shields
7402-55X	1-1/8" Bars - Yellow Shields
7402-62X	1-1/8" Bars - Blue Shields
7402-72X	1-1/8" Bars - Green Shields
7402-88X	1-1/8" Bars - Husaberg Blue

## Probend CRM Handguards for FAST FLEXX Bars

- CRM FLEXX PACKS INCLUDE: CRM Probend Bars, CRM Mount Clamps, Classic Enduro Shields, Powergrip Bar Ends, Probend Abrasion Guards
- Revolutionary Patent Pending Design & Trademark Probend Shape
- Specifically designed for the FLEXX handlebar system
- Large clearance for cables and levers
- Recommended for Enduro, Supermoto, and ATV applications

MX / SK XC / SM ATV / SK

PART #	CRMs for FLEXX BARS
7700-02	Bike Flexx Bars - Natural Shields
7700-12	Bike Flexx Bars - Black Shields
7700-22	Bike Flexx Bars - Orange Shields
7700-32	Bike Flexx Bars - Red Shields
7700-42	Bike Flexx Bars - White Shields
7700-55	Bike Flexx Bars - Yellow Shields
7700-62	Bike Flexx Bars - Blue Shields
7700-72	Bike Flexx Bars - Green Shields
7600-02	ATV Flexx Bars - Natural Shields
7600-12	ATV Flexx Bars - Black Shields
7600-22	ATV Flexx Bars - Orange Shields
7600-32	ATV Flexx Bars - Red Shields
7600-42	ATV Flexx Bars - White Shields
7600-55	ATV Flexx Bars - Yellow Shields
7600-62	ATV Flexx Bars - Blue Shields
7600-72	ATV Flexx Bars - Green Shields



Powergrip Alloy Bar Ends



Black Abrasion Guards



FLEXX Bar Application

HANDGUARDS  
PROBEND CRM

MADE IN THE USA



**FAST FLEXX**





MADE IN THE USA

HANDGUARDS  
CRM FACTORY EDITION



Black Anodized Aluminum Bars & Hardware



Color Match Abrasion Guards in 6 color ways



# CRM FACTORY EDITION

- CRM RACER PACKS INCLUDE: CRM Probend Bars, CRM Mount Clamps, Classic Enduro Shields, Powergrip Bar Ends, Probend Abrasion Guards
- Revolutionary Patent Pending Design & Trademark Probend Shape
- Anodized Black Aluminum Probend Bars and Mounts
- Color matched replaceable integrated plastic abrasion guards
- Center Reach Clamps provide maximum bite to secure handguards and allows for superior clearance on a wide range of bars
- Powergrip alloy bar ends fit standard 7/8" and oversized bars
- Recommended for Enduro, Supermoto, and ATV applications

MX / SX XC / SM / ATV / SK

**CENTER REACH MOUNTS (CRM)**  
provide maximum bite to secure handguards & allows for superior clearance on a wide range of bars

**FACTORY DECALS**  
super thick pre-applied decals available in 6 colorways



740X-22X ORANGE



740X-12X BLACK



740X-32X RED



740X-55X YELLOW



740X-62X BLUE



740X-72X GREEN

PART #	CRM FACTORY EDITION
7405-12X	7/8" Bars - Black Graphics
7405-22X	7/8" Bars - Orange Graphics
7405-32X	7/8" Bars - Red Graphics
7405-55X	7/8" Bars - Yellow Graphics
7405-62X	7/8" Bars - Blue Graphics
7405-72X	7/8" Bars - Green Graphics

PART #	CRM FACTORY EDITION
7406-12X	1-1/8" Bars - Black Graphics
7406-22X	1-1/8" Bars - Orange Graphics
7406-32X	1-1/8" Bars - Red Graphics
7406-55X	1-1/8" Bars - Yellow Graphics
7406-62X	1-1/8" Bars - Blue Graphics
7406-72X	1-1/8" Bars - Green Graphics



## Proabend CRM OPS Edition Complete Racer Packs

- CRM RACER PACKS INCLUDE: CRM Proabend Bars, CRM Mount Clamps, Classic Enduro Shields, Powergrip Bar Ends, Proabend Abrasion Guards
- Revolutionary Patent Pending Design & Trademark Proabend Shape
- Anodized Black Aluminum Proabend Bars and Mounts
- Camo green replaceable integrated plastic abrasion guards
- Center Reach Clamps provide maximum bite to secure handguards and allows for superior clearance on a wide range of bars
- Powergrip alloy bar ends fit standard 7/8" and oversized bars
- Recommended for Enduro, Supermoto, and ATV applications

**MX / SX / XC / SM / ATV / SK**

PART #	CRM CYCRA OPS EDITION
7403-12X	7/8" Bars - Black Graphics
7403-22X	7/8" Bars - Orange Graphics
7403-32X	7/8" Bars - Red Graphics
7403-55X	7/8" Bars - Yellow Graphics
7403-62X	7/8" Bars - Blue Graphics
7403-72X	7/8" Bars - Green Graphics

PART #	CRM CYCRA OPS EDITION
7404-12X	1-1/8" Bars - Black Graphics
7404-22X	1-1/8" Bars - Orange Graphics
7404-32X	1-1/8" Bars - Red Graphics
7404-55X	1-1/8" Bars - Yellow Graphics
7404-62X	1-1/8" Bars - Blue Graphics
7404-72X	1-1/8" Bars - Green Graphics

**ALLOY BAR ENDS**  
Powerful grip that fits standard 7/8" and oversized bars

**OPS DECALS**  
super thick pre-applied decals available in 6 colorways



# CRM

# OPS EDITION



Black Anodized Aluminum Bars & Hardware



Color Match Abrasion Guards Military Green on OPS edition



**CYCRA**

105

HANDGUARDS  
CRM OPS EDITION

MADE IN THE USA





MADE IN THE USA

# HANDGUARDS

ALLOY PROBEND

photo by JASON HOOPER

**PAUL WHIBLEY**  
AMPRO N-FAB YAMAHA



Patented shape and design



High Impact Materials



Includes all Hardware

TRADEMARK PROBEND SHAPE

# ALLOY PROBEND



**SHANE O'BANION**  
SUMSTAR - MC



▶ **PROBEND BAR PACKS**  
Include Probend Bars, Classic Enduro Shields, Powergrip Alloy Bar Ends, Probend Abrasion Guards



6061 T-6 Billet Aluminum



Patented PROBEND Bars  
US PATENT 8.820.191

▶ **ALLOY BAR ENDS**  
Powerful grip that fits standard 7/8" and oversized bars

▶ **BUMPERS**  
Replaceable integrated plastic abrasion guards





## Probend Handguard Bar Packs

- PROBEND BAR PACKS INCLUDE: Probend Bars, Classic Enduro Shields, Powergrip Bar Ends, Probend Abrasion Guards
- Revolutionary Patent Pending Design & Trademark Probend Shape
- 6061 Billet Aluminum Probend Bars and Bar Ends
- Replaceable integrated plastic abrasion guards
- Mount Clamps sold separately according to bar application - see page 119
- Powergrip alloy bar ends fit standard 7/8" and oversized bars

MX / SX XC / SM ATV / SK



Probend Replaceable Abrasion Guards Keep Bars Looking New



High Quality Injection Molded Classic Enduro Handshields



Powergrip Alloy Bar Ends Standard and Oversized Bars



7500-02 **NATURAL**



7500-32 **RED**



7500-62 **BLUE**



7500-12 **BLACK**



7500-42 **WHITE**



7500-72 **GREEN**



7500-22 **ORANGE**



7500-55 **YELLOW**



7500-88 **HUSABERG**

PART #	BAR PACKS/COLOR
7500-02	Alloy Probend Bar Pack - Natural Shields
7500-12	Alloy Probend Bar Pack - Black Shields
7500-22	Alloy Probend Bar Pack - Orange Shields
7500-32	Alloy Probend Bar Pack - Red Shields
7500-42	Alloy Probend Bar Pack - White Shields
7500-55	Alloy Probend Bar Pack - Yellow Shields
7500-62	Alloy Probend Bar Pack - Blue Shields
7500-72	Alloy Probend Bar Pack - Green Shields
7500-88	Alloy Probend Bar Pack - Husaberg Blue

\*ALL MOUNT CLAMP OPTIONS SOLO SEPERATELY - SEE PG 119

HANDGUARDS  
ALLOY PROBEND

MADE IN THE USA



**CYCRA**

107



photo by BRIAN ELLIOT

MADE IN THE USA

HANDGUARDS  
PROBEND FACTORY EDITION

# PROBEND FACTORY EDITION

- PROBEND BAR PACKS INCLUDE: Probend Bars, Classic Enduro Shields, Powergrip Bar Ends, Probend Abrasion Guards
- Revolutionary Patent Pending Design & Trademark Probend Shape
- 6061 Billet Aluminum Anodized Black Probend Bars and Bar Ends
- Color Match Replaceable integrated plastic abrasion guards
- Mount Clamps sold separately according to bar application - see page 119
- Powergrip alloy bar ends fit standard 7/8" and oversized bars
- Recommended for Enduro, Supermoto, and ATV applications

MX / SK / XC / SM / ATV / SK

## MOUNT OPTIONS

Probend Bar Packs allow rider to choose mount to customize handguard setup - see page 119

## FACTORY DECALS

super thick pre-applied decals available in 6 colorways



7503-12 BLACK



7503-22 ORANGE



7503-32 RED



7503-55 YELLOW



7503-62 BLUE



7503-72 GREEN



Black Anodized Aluminum Bars & Hardware



Factory Color Match Abrasion Guards

### PART # FACTORY EDITION BAR PACKS

7501-12	Bar Pack - Black Graphics
7501-22	Bar Pack - Orange Graphics
7501-32	Bar Pack - Red Graphics
7501-55	Bar Pack - Yellow Graphics
7501-62	Bar Pack - Blue Graphics
7501-72	Bar Pack - Green Graphics



## Probend CRM OPS Edition Complete Racer Packs



- CRM RACER PACKS INCLUDE: CRM Probend Bars, CRM Mount Clamps, Classic Enduro Shields, Powergrip Bar Ends, Probend Abrasion Guards
- Revolutionary Patent Pending Design & Trademark Probend Shape
- Anodized Black Aluminum Probend Bars and Mounts
- Camo green replaceable integrated plastic abrasion guards
- Center Reach Clamps provide maximum bite to secure handguards and allows for superior clearance on a wide range of bars
- Powergrip alloy bar ends fit standard 7/8" and oversized bars
- Recommended for Enduro, Supermoto, and ATV applications

MX / SX / XC / SM / ATV / SK

### PART # CYCRA OPS BAR PACKS

75D3-12	Bar Pack - Black Graphics
75D3-22	Bar Pack - Orange Graphics
75D3-32	Bar Pack - Red Graphics
75D3-55	Bar Pack - Yellow Graphics
75D3-62	Bar Pack - Blue Graphics
75D3-72	Bar Pack - Green Graphics

**ALLOY BAR ENDS**  
Powerful grip that fits standard 7/8" and oversized bars

**OPS DECALS**  
super thick pre-applied decals available in 6 colorways

**MOUNT OPTIONS**  
Probend Bar Packs allow rider to choose mount to customize handguard setup - see page 119



7503-32 RED



7503-12 BLACK



7503-22 ORANGE



7503-55 YELLOW



7503-62 BLUE



7503-72 GREEN

# PROBEND OPS EDITION



Black Anodized Aluminum Bars & Hardware



Color Match Abrasion Guards OPS edition Camo Green

**CYCRA**

109

HANDGUARDS  
PROBEND OPS EDITION

MADE IN THE USA





MADE IN THE USA

# HANDGUARDS SERIES ONE PROBEND



6061 T-6 Aluminum  
Beveled Inside Series One Bars



Powergrip Alloy Bar Ends  
for Standard or Oversized Bars



Low Profile Design &  
Wrap Around Protection



Wrap Around  
Protection



High Impact  
Materials



Includes all  
Hardware

# SERIES ONE BAR PACKS



7800-22 ORANGE

- BAR PACKS INCLUDE: Series One Bars, Enduro DX Shields, and Powergrip Bar Ends, (Mounts Not Included)
- CNC machined 6061 billet aluminum Series One Bars
- Cycra Low Profile Design with inside beveled edges
- Large area to accommodate hands and levers
- High quality Dual Injection rubber /plastic handshields
- New Powergrip bar ends fits steel and alloy bars



7800-12 BLACK



7800-32 RED



7800-42 WHITE



7800-55 YELLOW



7800-62 BLUE



7800-72 GREEN

**HIGH IMPACT**  
Injection molded dual rubber and plastic Enduro DX handshields

MX / SK / XC / SM / ATV / SK

PART #	BAR PACKS (MOUNTS NOT INCLUDED)
7800-12	Series One Bar Pack - Black Shields
7800-22	Series One Bar Pack - Orange Shields
7800-32	Series One Bar Pack - Red Shields
7800-42	Series One Bar Pack - White Shields
7800-55	Series One Bar Pack - Yellow Shields
7800-62	Series One Bar Pack - Blue Shields
7800-72	Series One Bar Pack - Green Shields

\*ALL MOUNT CLAMP OPTIONS SOLD SEPERATELY - SEE PG 119



## COMPOSITE PROBEND BAR PACKS

- BAR PACKS INCLUDE: Composite Probend Wrap Around Shields, Powergrip Bar Ends, Probend Abrasion Guards (Mounts Not Included)
- Composite full wrap around handguards
- Trademark Probend Shape
- Large area to accommodate hands and levers
- Integrated composite bumper to protect Probend Bars
- New and improved Powergrip bar ends
- Mount Clamps sold separately according to bar application - see page 119



7100 - 12 **BLACK**



7100 - 22 **ORANGE**



7100 - 32 **RED**



7100 - 42 **WHITE**



7100 - 55 **YELLOW**



7100 - 62 **BLUE**



7100 - 72 **GREEN**



Features Cycra Racing's Trademark Probend Shape



Powergrip Alloy Bar Ends for Standard or Oversized Bars



Probend Abrasion Guards keep bars looking new

### PART # BAR PACKS (MOUNTS NOT INCLUDED)

7100-12	Composite Probend Bar Pack - Black Shields
7100-22	Composite Probend Bar Pack - Orange Shields
7100-32	Composite Probend Bar Pack - Red Shields
7100-42	Composite Probend Bar Pack - White Shields
7100-55	Composite Probend Bar Pack - Yellow Shields
7100-62	Composite Probend Bar Pack - Blue Shields
7100-72	Composite Probend Bar Pack - Green Shields

\*ALL MOUNT CLAMP OPTIONS SOLD SEPERATELY - SEE PG 119

**MX / SX** **KC** **SM** **ATV** **SK**

# COMPOSITE PROBEND



Patented shape and design



High Impact Materials



Wrap Around Protection



**CYCRA** 111

HANDGUARDS  
COMPOSITE PROBEND

MADE IN THE USA





MADE IN THE USA

HANDGUARDS  
REBOUND



**JOSH STRANG**  
2010 GNCC CHAMPION

# REBOUND TECHNOLOGY

**NEW REBOUND HAND SHIELDS**

- STRONGEST independent mount hand guard system available
- Great alternative to wrap around handguards for woods or MX
- Patented folding shield for those unexpected quick departures
- Trick billet aluminum mounts & reinforced backbone on shield
- Under or over bars mounting for easy installation and clean hand control area
- Racer pack includes shields, mounts, and hardware

PART #	APPLICATION	COLOR
0226-12	MX/SX/XC/ATV	Black
0226-22	MX/SX/XC/ATV	Orange
0226-33	MX/SX/XC/ATV	Red
0226-42	MX/SX/XC/ATV	White
0226-55	MX/SX/XC/ATV	Yellow
0226-62	MX/SX/XC/ATV	Blue
0226-72	MX/SX/XC/ATV	Green

**MX SK XC SM ATV SK**



**UNPARALLELLED STRENGTH**  
against severe impacts with Trick Billet Aluminum Mounts & reinforced shield backbone





MADE IN THE USA  
**HANDGUARDS**  
 REBOUND

MADE IN THE USA



▶ **OVER/UNDER MOUNTING**  
 for easy installation  
 to custom preference

▶ **DURABILITY**  
 vigorously tested for  
 quality & dependability  
 assurance

▶ **US PATENT NO. 8534159**  
 spring loaded fold out  
 shield technology

▶ **BILLET ALUMINUM**  
 mounts provide great  
 alternative to wrap around systems



**NEW TECHNOLOGY**



7500-12 BLACK



7500-22 ORANGE



7500-32 RED



7500-42 WHITE



7500-55 YELLOW



7500-62 BLUE



7500-72 GREEN

▶ **7 FACTORY COLORS**  
 available with thick  
 decals pre-applied

**CYCRA**





MADE IN THE USA

HANDGUARDS  
STEALTH DX

RYAN SIPES  
ROCKSTAR KTM



Ultimate Protection



High Impact Materials



Easy Installation

# STEALTH DX RACER PACKS



0025-42X WHITE



0025-12X BLACK



0025-22X ORANGE



0025-32X RED



0025-55X YELLOW



0025-62X BLUE



0025-72X GREEN

**HIGH IMPACT**  
Injection molded dual rubber and plastic Enduro DX handshields



6061 T-6 Aluminum Alloy Brackets



DX Rotating Bolt Plate Allows Mounting Above or Below Levers

- Complete Racer Pack Includes: Shields, Brackets & Hardware
- Aircraft quality 6061 T-6 aluminum brackets
- In-molded rubber edge provides increased protection
- Simple and easy to install
- Rotating bolt plates allows bracket mounting above or below levers
- High quality Dual Injection rubber / plastic handshields
- Brackets for ATV & Snowmobile applications sold separately

**MX SK XC SM ATV SK**

PART #	COMPLETE RACER PACKS
0025-12X	Stealth DX Racer Pack - Black Shields
0025-22X	Stealth DX Racer Pack - Orange Shields
0025-32X	Stealth DX Racer Pack - Red Shields
0025-42X	Stealth DX Racer Pack - White Shields
0025-55X	Stealth DX Racer Pack - Yellow Shields
0025-62X	Stealth DX Racer Pack - Blue Shields
0025-72X	Stealth DX Racer Pack - Green Shields

\*FOR REPLACEMENT MOUNT CLAMP OPTIONS - SEE PG 119





PART #	COMPOSITE PRIMAL STEALTHS
0055-12X	Primal Stealth - Black Shields
0055-22X	Primal Stealth - Orange Shields
0055-32X	Primal Stealth - Red Shields
0055-42X	Primal Stealth - White Shields
0055-55X	Primal Stealth - Yellow Shields
0055-62X	Primal Stealth - Blue Shields
0055-72X	Primal Stealth - Green Shields

PART #	MX ALLOY STEALTHS
0015-12X	MX Alloy Stealth - Black Shields
0015-22X	MX Alloy Stealth - Orange Shields
0015-32X	MX Alloy Stealth - Red Shields
0015-42X	MX Alloy Stealth - White Shields
0015-55X	MX Alloy Stealth - Yellow Shields
0015-62X	MX Alloy Stealth - Blue Shields
0015-72X	MX Alloy Stealth - Green Shields

PART #	ATV ALLOY STEALTHS
0016-12X	ATV Alloy Stealth - Black Shields
0016-22X	ATV Alloy Stealth - Orange Shields
0016-32X	ATV Alloy Stealth - Red Shields
0016-42X	ATV Alloy Stealth - White Shields
0016-55X	ATV Alloy Stealth - Yellow Shields
0016-62X	ATV Alloy Stealth - Blue Shields
0016-72X	ATV Alloy Stealth - Green Shields

\*REPLACEMENT BRACKET OPTIONS - SEE PG 119

### STEALTH ALLOY/ATV/PRIMAL COMPLETE RACER PACKS

- COMPLETE RACER PACKS INCLUDE: Stealth Shields, Alloy or Composite Mount Brackets & All Hardware
- Available with Composite Primal Brackets, Alloy Brackets or ATV Brackets
- Rotating bolt plate allows brackets to be mounted above or below levers
- Fits most applications from minis to full size bikes and quads
- High quality injection molded composite shields
- Slim, low profile handshield design
- Simple and easy to install

MX / SK XC / SM ATV / SK



0055 - 12X BLACK



0055 - 22X ORANGE



0055X - 32 RED



0055 - 42X WHITE



0055 - 55X YELLOW



0055 - 62X BLUE



0055 - 72X GREEN



Low Profile Protection



High Impact Materials



Easy Installation

# STEALTH ALLOY / PRIMAL

JUSTIN BRAYTON  
JGRMX TOYOTA YAMAHA

photo by STEVE COX





MADE IN THE USA

HANDGUARDS  
M2 RECOIL



Low Profile Protection



High Impact Materials



Easy Installation

# M2 RECOIL HANDSHIELDS

PART #	APPLICATION / COLOR
0225-12XVT	M2 Vented - Black Shields
0225-22XVT	M2 Vented - Orange Shields
0225-32XVT	M2 Vented - Red Shields
0225-42XVT	M2 Vented - White Shields
0225-55XVT	M2 Vented - Yellow Shields
0225-62XVT	M2 Vented - Blue Shields
0225-72XVT	M2 Vented - Green Shields

PART #	APPLICATION / COLOR
0225-12X	M2 Non-Vented - Black Shields
0225-22X	M2 Non-Vented - Orange Shields
0225-32X	M2 Non-Vented - Red Shields
0225-42X	M2 Non-Vented - White Shields
0225-55X	M2 Non-Vented - Yellow Shields
0225-62X	M2 Non-Vented - Blue Shields
0225-72X	M2 Non-Vented - Green Shields

\*FOR REPLACEMENT BRACKETS - SEE PG 119

**MX / SK / KC / SM / ATV / SK**

- Complete Racer Pack includes: Shields, Brackets & Hardware
- Vented and Non-Vented options available
- Patent Pending Recoil Technology allows handguards to swing out
- Composite bracket offers 33% increase in strength and flexibility
- Aircraft quality 6061 T-6 aluminum mounts
- High Quality injection molded handshields



**RECOIL TECHNOLOGY**  
Internal spring provides full range of motion



0225-12XVT/12X **BLACK**



0225-22XVT/22X **ORANGE**



0225-32XVT/32X **RED**



0225-42XVT/42X **WHITE**



0225-55XVT/55X **YELLOW**



0225-62XVT/62X **BLUE**



0225-72XVT/72X **GREEN**



## M4 RECOIL ATV HANDSHIELD COMPLETE RACER PACKS

- COMPLETE RACER PACKS INCLUDE: Shields, Brackets, Shield Covers & Hardware
- Maximum coverage for Sport & Utility ATVs
- Patent Pending Recoil Technology allows handguards to swing out
- 6061 T-6 Aluminum Mount Clamps
- Re-designed composite bracket offers 33% increase in strength and flexibility
- High quality metal mounts can be mounted directly to bars and most perches

MX / SK / XC / SM / **ATV** / SK

PART #	APPLICATION/COLOR
0215-12X	M4 Recoil - Black Shields
0215-22X	M4 Recoil - Orange Shields
0215-32X	M4 Recoil - Red Shields
0215-55X	M4 Recoil - Yellow Shields
0215-62X	M4 Recoil - Blue Shields
0215-72X	M4 Recoil - Green Shields
0215-98X	M4 Recoil - Camo Green

\*FOR REPLACEMENT BRACKETS - SEE PG 119



0215 - 22X ORANGE

▶ **RECOIL TECHNOLOGY**  
Internal spring provides full range of motion



▶ **SHIELD COVER**  
seals vents for cold or wet riding conditions



0215 - 12X BLACK



0215 - 32X RED



0215 - 55X YELLOW



0215 - 62X BLUE



0215 - 72X GREEN



0215 - 98X CAMO GREEN

# M4 RECOIL HANDSHIELDS



Max Coverage Protection

High Impact Materials

Easy Installation

**CYCRA** 117

HANDGUARDS  
M4 RECOIL ATV

MADE IN THE USA







MADE IN THE USA

HANDGUARDS  
HARDWARE



Patented shape and design



High Impact Materials



Includes all Hardware

# HANDGUARD HARDWARE



▶ **MOUNT OPTIONS**  
to fit a wide variety of  
bar sizes and applications



▶ **PROBENO BARS**  
replacement bars for  
wrap around systems

▶ **ALLOY BAR ENDS**  
Powerful grip that fits standard  
7/8" and oversized bars



# Handguard Hardware

- All of the necessary replacement parts to keep your handguards factory fresh

PART #	CRM APPLICATIONS	COLOR
7006-02	CRM Probend Bar Set (w/ Plastic Bumpers)	Alloy
7006-12	CRM Anodized Bar Set (w/ Plastic Bumpers)	Black
1360-02	CRM Clamp Set Standard 7/8"	Alloy
1360-12	CRM Anodized Clamp Set Standard 7/8"	Black
1361-02	CRM Clamp Set 1-1/8"	Alloy
1361-12	CRM Anodized Clamp Set 1-1/8"	Black
1053-02	Powergrip Bar End Set	Alloy
1362-02	Spacer Kit	Alloy
1362-12	Anodized Spacer Kit	Black
2BT-0137-12	Adventure Link Spacer Kit	Black

\*for CRM applications on 32" Adventure Bars

PART #	PROBEND & SERIES 1 APPLICATIONS	COLOR
7005-02	Probend Bar Set (w/ Plastic Bumpers)	Alloy
7005-12	Probend Anodized Bar Set (w/ Plastic Bumpers)	Black
1151-02	U-Clamp Set Standard 7/8"	Alloy
1151-12	U-Clamp Set Standard 7/8"	Black
1150-02	U-Clamp Set "T1" / Pro Taper (Up to 2007)*	Alloy
1150-12	U-Clamp Set "T1" / Pro Taper (Up to 2007)*	Black
1156-02	U-Clamp Set "T2" / KTM OEM 03-09 (Renthal Taper/Neken/08-10 Pro Taper)	Alloy
1156-12	U-Clamp Set "T2" / KTM OEM 03-09 (Renthal Taper/Neken/08-10 Pro Taper)	Black
1153-02	U-Clamp Set "T3" / Magura	Alloy
1350-02	U-Clamp Set Renthal Twinwall	Alloy
1055-02	Triple Clamp Side Mount Set	Alloy
1055-CRX	Triple Clamp CRF X Side Mount Set	Alloy
1655-02	Triple Clamp Front Mount Set	Alloy
1050-02	Right Fit Clamp Set Pro Taper*	Alloy
1051-02	Right Fit Clamp Set Standard 7/8"	Alloy
1653-02	Right Fit Clamp Set Magura	Alloy
1056-02	Right Fit Clamp Set KTM OEM 03-09 (Renthal Taper/Neken/08-10 Pro Taper)	Alloy
1052-02	Right Fit Link Set	Alloy
1351-02	Solution Mount System Standard 7/8"	Alloy
1350-02	Solution Mount System 1-1/8"	Alloy
7052-02	Composite Probend Grammet Set	Alloy
1053-02	Powergrip Bar End Set	Alloy
1361-02	Spacer Kit	Alloy
1361-12	Spacer Kit	Black

PART #	ATV APPLICATIONS	COLOR
1017-02	ATV Right Fit Mount System Standard 7/8"	Alloy
1018-02	ATV Right Fit Mount System Pro Taper	Alloy

PART #	INDEPENDENT MOUNT APPLICATIONS	COLOR
0015-00	Stealth Alloy Brackets	Alloy
0016-00	Stealth Alloy ATV Brackets	Alloy
0045-00	Stealth SK Brackets *for Snowmobiles*	Alloy
0055-00	Stealth Primal Composite Brackets	Black
0225-00	M2 Recoil Composite Brackets	Black
0215-00	M4 Recoil Composite Brackets	Black



1360-02 CRM CLAMPS

1360-12 CRM CLAMPS

1053-02 ALLOY BAR ENDS

1362-02 ALLOY SPACERS

2BT-0137-12 ADVENTURE LINK SPACERS



7006-02 ALLOY CRM BARS

7006-12 BLACK CRM BARS



7005-02 ALLOY PROBEND BARS

7005-12 BLACK PROBEND BARS



115X-02 ALLOY U-CLAMPS

1055-XX TC SIDE MOUNTS

1655-02 TC FRONT MOUNTS

105X-02 RIGHT FIT SET

1052-02 LINK SET



135X-02 SOLUTION MOUNT SYSTEM

101X-02 ATV RIGHT FIT SET

7052-02 GROMMET SET



001X-00 STEALTH ALLOY BRACKETS

0045-00 SK SNOWMOBILE BRACKETS

0055-00 PRIMAL BRACKETS

02X5-00 RECOIL BRACKETS

\*REPLACEMENT HANDSHEILOS & ABRASION GUARDS - SEE PG 120

HANDGUARDS  
HARDWARE

MADE IN THE USA





MADE IN THE USA

HANDGUARDARDS  
REPLACEMENT SHIELDS



Knuckle Protection



High Impact Materials



Easy Installation

# REPLACEMENT HANDSHIELDS



- Injection Molded High Impact Plastic
- Simple and easy to install
- Hardware included



1016-12 CLASSIC



1016-22 CLASSIC



1016-32 CLASSIC



1016-02 CLASSIC



1016-55 CLASSIC



1016-62 CLASSIC



1016-72 CLASSIC



1016-88 CLASSIC



1115-12 LOW PROFILE



1115-22 LOW PROFILE



1115-32 LOW PROFILE



1115-42 LOW PROFILE



1115-55 LOW PROFILE



1115-62 LOW PROFILE



1115-72 LOW PROFILE



1115-88 LOW PROFILE



1025-12 ENOURO DX



1025-22 ENOURO DX



1025-32 ENOURO DX



1025-42 ENOURO DX



1025-55 ENOURO DX



1025-62 ENOURO DX



1025-72 ENOURO DX



1025-88 ENOURO DX

PART #	SHIELD SET	COLOR
1016-02	Classic Enduro	Natural
1016-12	Classic Enduro	Black
1016-22	Classic Enduro	Orange
1016-32	Classic Enduro	Red
1016-42	Classic Enduro	White
1016-55	Classic Enduro	Yellow
1016-62	Classic Enduro	Blue
1016-72	Classic Enduro	Green
1016-88	Classic Enduro	Hus. Blue

PART #	SHIELD SET	COLOR
1115-12	Low Profile	Black
1115-22	Low Profile	Orange
1115-32	Low Profile	Red
1115-42	Low Profile	White
1115-55	Low Profile	Yellow
1115-62	Low Profile	Blue
1115-72	Low Profile	Green
1115-88	Low Profile	Hus. Blue

PART #	SHIELD SET	COLOR
1025-12	Enduro DX	Black
1025-22	Enduro DX	Orange
1025-32	Enduro DX	Red
1025-42	Enduro DX	White
1025-55	Enduro DX	Yellow
1025-62	Enduro DX	Blue
1025-72	Enduro DX	Green
1025-88	Enduro DX	Hus. Blue

PART #	SHIELD SET	COLOR
1026-12	Series 1	Black
1026-22	Series 1	Orange
1026-32	Series 1	Red
1026-42	Series 1	White
1026-55	Series 1	Yellow
1026-62	Series 1	Blue
1026-72	Series 1	Green
1026-88	Series 1	Hus. Blue

120





MADE IN THE USA

HANDGUARDS  
ABRASION GUARDS

## PROBEND ABRASION GUARDS

- Keep your Probend bars looking fresh.
- Includes mounting hardware.
- Fits Probends, Probend CRM's, and Probend Flexx Bars.
- High quality injection molded plastic
- Simple and easy to install

PART #	GUARD APPLICATIONS	COLORS
1057-12	Probend, CRM, & Flexx	Black
1057-22	Probend, CRM, & Flexx	Orange
1057-33	Probend, CRM, & Flexx	Red
1057-55	Probend, CRM, & Flexx	Yellow
1057-62	Probend, CRM, & Flexx	Blue
1057-72	Probend, CRM, & Flexx	KX Green
1057-80	Probend, CRM, & Flexx	Grey
1057-98	Probend, CRM, & Flexx	Camo Green
1157-12	Composite Probend	Black



1057-12 BLACK



Trademark Probend Shape



Keep bars looking new



1157-12 BLACK



1057-22 ORANGE



1057-33 RED



1057-55 YELLOW



1057-62 BLUE



1057-72 GREEN



1057-80 GRAY



1057-98 CAMO GREEN

# ABRASION GUARDS



Low Profile Protection



High Impact Materials



Easy Installation







# MOTO GEAR

122







# FEATURES

## MOTO STANDS

SPECIAL EDITION

CLASSIC STANDS

## TIE DOWNS

GRIP ARMOR

KEY CHAINS

APPAREL



MADE IN THE USA

MOTO GEAR  
MOTO STANDS



Reinforced Top  
Prevents Sag



Ultra Tough  
Materials



Includes all  
Hardware

**REINFORCED**  
new top design prevents sag.  
Rubber mat secured with  
recessed screws & is replaceable.

# MOTO STANDS

- New design with larger and reinforced top to prevent sag
- Extra wide feet to prevent sinking
- Tough built in grip handles
- Replacable rubber mat secured with recessed screws
- Quality injection molded composite legs
- Easy access to lower parts tray
- Super thick graphics pre-applied on Special Editions only

**EASY GRIP**  
strong injection molded  
grab handles.

**PRE-APPLIED DECALS**  
special edition stands include super thick  
pre-applied decals in each factory color way

**EXTRA WIDE FEET**  
& durable injection molded legs  
constructed for long life and  
prevent sinking in sand and mud

**TOOL TRAY**  
easy access to bottom  
tray for frequently used tools







2037-22SE ORANGE    2037-32SE RED    2037-62SE BLUE    2037-72SE GREEN    2037-55SE YELLOW    2037-88SE HUSKY



2037-22WE ORANGE    2037-32WE RED    2037-62WE BLUE    2037-72WE GREEN    2037-55WE YELLOW    2037-88WE HUSKY



2037-22UA ORANGE    2037-32UA RED    2037-62UA BLUE    2037-72UA GREEN    2037-55UA YELLOW    2037-12UA BLACK

**SPECIAL EDITION STANDS**

- Comes assembled with pre-applied super thick decals

PART #	MOTO STAND	COLOR	PART #	MOTO STAND	COLOR
2037-22SE	Special Edition	Orange/Gray	2037-22WE	Special Edition	White/Orange
2037-32SE	Special Edition	Red/Gray	2037-32WE	Special Edition	White/Red
2037-55SE	Special Edition	Yellow/Gray	2037-55WE	Special Edition	White/Yellow
2037-62SE	Special Edition	Blue/Gray	2037-62WE	Special Edition	White/Blue
2037-72SE	Special Edition	Green/Gray	2037-72WE	Special Edition	White/Green
2037-88SE	Special Edition	Husky/Gray	2037-88WE	Special Edition	White/Husky

**CLASSIC MOTO STANDS**

- Comes un-assembled with easy instructions

PART #	MOTO STAND	COLOR
2037-22UA	Classic Motostand	Orange
2037-32UA	Classic Motostand	Red
2037-62UA	Classic Motostand	Blue
2037-72UA	Classic Motostand	Green
2037-55UA	Classic Motostand	Yellow
2037-12UA	Classic Motostand	Black



**REPLACEMENT MAT**

- Super durable replacement molded rubber mat with recessed screw heads  
- Hardware included

PART #	APPLICATION
2037-RM	Replacement Mat





MADE IN THE USA

MOTO GEAR  
SOFT STRAP TIE DOWNS



Industrial Strength



Weather Resistant



1.5" Extra Wide Straps

# SOFT STRAP TIE DOWNS



3081-22 ORANGE

3081-32 RED

3081-55 YELLOW

3081-62 BLUE

3081-72 GREEN

## SOFT STRAP TIE DOWNS

- 62" long 1.5 inch wide nylon webbed straps (sold in pairs)
- 1100 - 1300 lb tension strength
- Secure and durable for rugged transport
- Industrial strength non-slip cam buckles
- Large soft hooks at one end, carabiner on opposing ends
- Weather resistant

PART #	APPLICATION	COLOR
3081-55	CYCRA Soft Strap Tie Downs	Yellow
3081-22	CYCRA Soft Strap Tie Downs	Orange
3081-62	CYCRA Soft Strap Tie Downs	Blue
3081-72	CYCRA Soft Strap Tie Downs	Green
3081-32	CYCRA Soft Strap Tie Downs	Red







PART #	APPLICATION (SETS)	COLOR	PART #	APPLICATION (SETS)	COLOR
0010-12	Grip Armor Bar Ends	Black	0011-12	Grip Armor Replacement Discs	Black
0010-22	Grip Armor Bar Ends	Orange	0011-22	Grip Armor Replacement Discs	Orange
0010-32	Grip Armor Bar Ends	Red	0011-32	Grip Armor Replacement Discs	Red
0010-42	Grip Armor Bar Ends	White	0011-42	Grip Armor Replacement Discs	White
0010-55	Grip Armor Bar Ends	Yellow	0011-55	Grip Armor Replacement Discs	Yellow
0010-62	Grip Armor Bar Ends	Blue	0011-62	Grip Armor Replacement Discs	Blue
0010-72	Grip Armor Bar Ends	Green	0011-72	Grip Armor Replacement Discs	Green
0010-80	Grip Armor Bar Ends	Gray	0011-80	Grip Armor Replacement Discs	Gray

### GRIP ARMOR BAR END SETS

- Cycra Grip Armour Bar Ends keep your grips looking good longer
- Protects grips and throttle tubes from side impacts
- Replaceable colored rings allow you to match your bike
- Ultra tough, high impact plastic rings
- Billet machined alloy hardware



0010-80 GRAY



0011-12 BLACK 0011-22 ORANGE 0011-32 RED 0011-42 WHITE 0011-55 YELLOW 0011-62 BLUE 0011-72 GREEN 0011-80 GRAY



0010-12 BLACK 0010-22 ORANGE 0010-32 RED 0010-42 WHITE 0010-55 YELLOW 0010-62 BLUE 0010-72 GREEN

# GRIP ARMOR

- Grip Protection
- High Impact Materials
- Easy Installation





MADE IN THE USA

MOTO GEAR  
KEY CHAINS



# FACTORY KEY CHAINS



0002-22 ORANGE

0002-32 RED

0002-42 WHITE

0002-55 YELLOW

0002-62 BLUE

0002-72 GREEN

0001-22 ORANGE

0001-32 RED

0001-42 WHITE

0001-55 YELLOW

0001-62 BLUE

0001-72 GREEN

## CYCRA KEY CHAINS

- Performance front fender and stadium number plates
- High quality injection molded plastic
- Available in 6 factory color ways
- [plate graphic template is available for decal companies]

PART #	APPLICATION	COLOR	PART #	APPLICATION	COLOR
0001-22	Fender Key Chain	Orange	0002-22	# Plate Key Chain	Orange
0001-32	Fender Key Chain	Red	0002-32	# Plate Key Chain	Red
0001-42	Fender Key Chain	White	0002-42	# Plate Key Chain	White
0001-55	Fender Key Chain	Yellow	0002-55	# Plate Key Chain	Yellow
0001-62	Fender Key Chain	Blue	0002-62	# Plate Key Chain	Blue
0001-72	Fender Key Chain	Green	0002-72	# Plate Key Chain	Green



## CYCRA FITTED HATS

- Premium fitted hats
- Cotton/ Polyester Construction

PART #	FITTED HAT	COLOR	SIZE
1111-55S	Yellow Icon Hat	Yellow on Black	SM/MO
1111-55L	Yellow Icon Hat	Yellow on Black	LG/XL
1111-12S	Black Icon Hat	Black on Black	SM/MO
1111-12L	Black Icon Hat	Black on Black	LG/XL



1111 -55 YELLOW/BLACK



1111 -12 BLACK/BLACK

## CYCRA TEES

- High Quality 100% Cotton
- Screen Printed Designs
- Available in MO, LG, and XL

PART #	CYCRA TEES	COLOR	SIZE
108172	Made in USA tee	White	Med
108173	Made in USA tee	White	Lrg
108174	Made in USA tee	White	XL
108175	Chaos Logo tee	Black	Med
108176	Chaos Logo tee	Black	Lrg
108177	Chaos Logo tee	Black	XL



10817X WHITE



10817X BLACK

## CYCRA HOODIES

- High Quality 100% Cotton
- Screen Printed Designs
- Available in SM, MO, LG, and XL

PART #	CYCRA HOODIES	COLOR
108178 - SIZE	Cycra Racing Hoodie	Black
108179 - SIZE	Cycra Racing Hoodie	Red
108180 - SIZE	Cycra Racing Hoodie	Orange
108181 - SIZE	Cycra Racing Hoodie	Blue

# CYCRA APPAREL

FRONT



BACK



FRONT

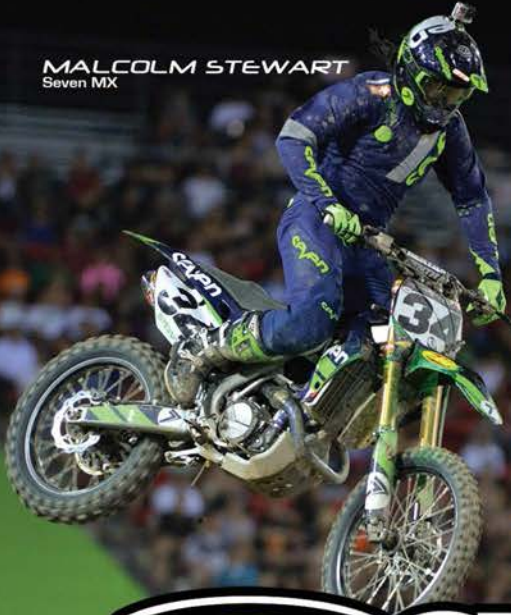


BACK





MALCOLM STEWART  
Seven MX



JUSTIN BARCIA  
JGR Toyota N-FAB Yamaha



TREY CANARD  
American Honda



COLE RICHARDSON  
AMPRO Yamaha ATV



JESSE NELSON  
TLD Lucas Oil Red Bull KTM



BRETT CUE  
Mr. Whip

# **CYCRA** **LIKE NO OTHER**

*Cycra products are designed with performance features, ultimate durability, and style that has remained unrivaled in the industry since 1996. Proudly made in the USA.*





JORDAN ASHBURN  
AMPRO Yamaha



JIMMY DECOTIS  
Privateer



PAUL WHIBLEY  
AMPRO Yamaha

RYAN LONGSTRETH  
All moto, All the time



JOSH STRANG  
2010 GNCC Champion



JUSTIN BOGLE  
FC GEICO Honda



BRETT METCALFE

