

X-TREME HEAVY DUTY AXLES

- » 4340 Chromoly Steel for complete Axle
- » Re-Engineered Cage design to enhance durability
- » Larger CV Joints and Center Shaft diameters

X-TREME LONG TRAVEL AXLES

- » Double offset Joint (DOJ) designed to reduce heat during high speed desert riding
- » Custom built to fit all major Long Travel Kits (+3", +3.5", +4")



X-TREME HEAVY DUTY AXLES

THERMO POLYESTER
ELASTOMAR BOOT

LARGER CV JOINTS AND
CENTER SHAFT DIAMETERS



ENTIRE AXLE DUAL HEAT TREATED
4340 CHROMOLY MATERIAL

LARGER SWING ANGLES UP
TO 47 DEGREES

RE-ENGINEERED CAGE
DESIGN TO
ENHANCE DURABILITY

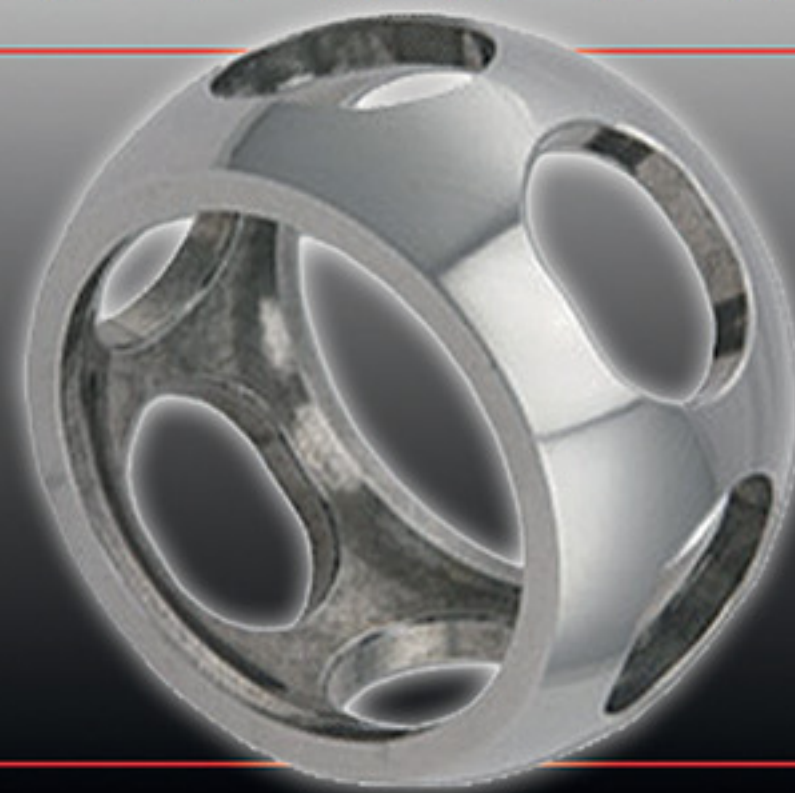
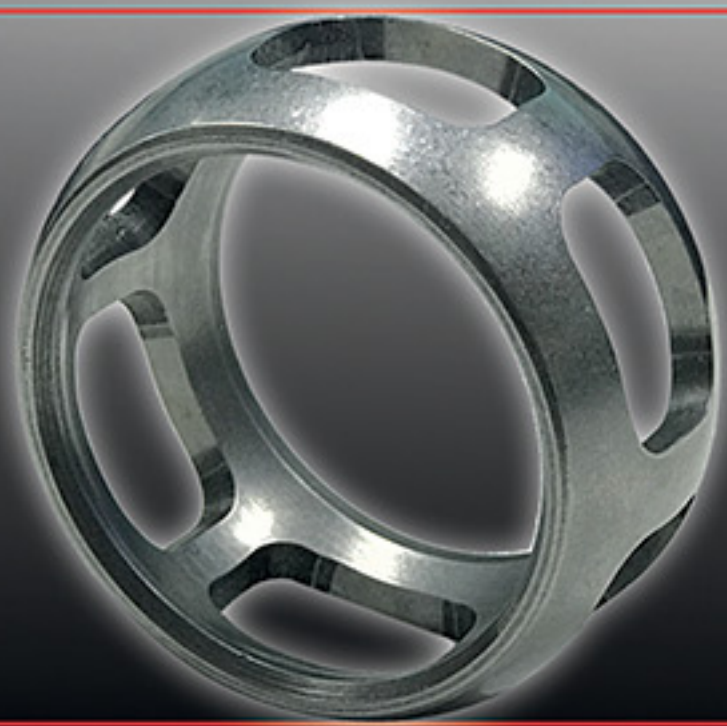
CAGE COMPARISION



REGULAR
MATERIAL



4340
CHROMOLY



- THICKER WALL THAN THE PREVIOUS DESIGN
- UPGRADED TO DUAL HEAT TREATED 4340 CHROMOLY MATERIAL
- SMALLER WINDOW, INCREASING SURFACE AREA MINIMIZING FRACTURE POINTS
- MICRO POLISHED COMPONENTS