



motoalliance

MOTOALLIANCE PLOW MOUNT MA11101 Polaris Sportsman

Thank you for purchasing our MotoAlliance plow mount(s). You now own a premium, custom plow mount to allow you to use your plow with your ATV. Please note the following instructions and heed all warnings.

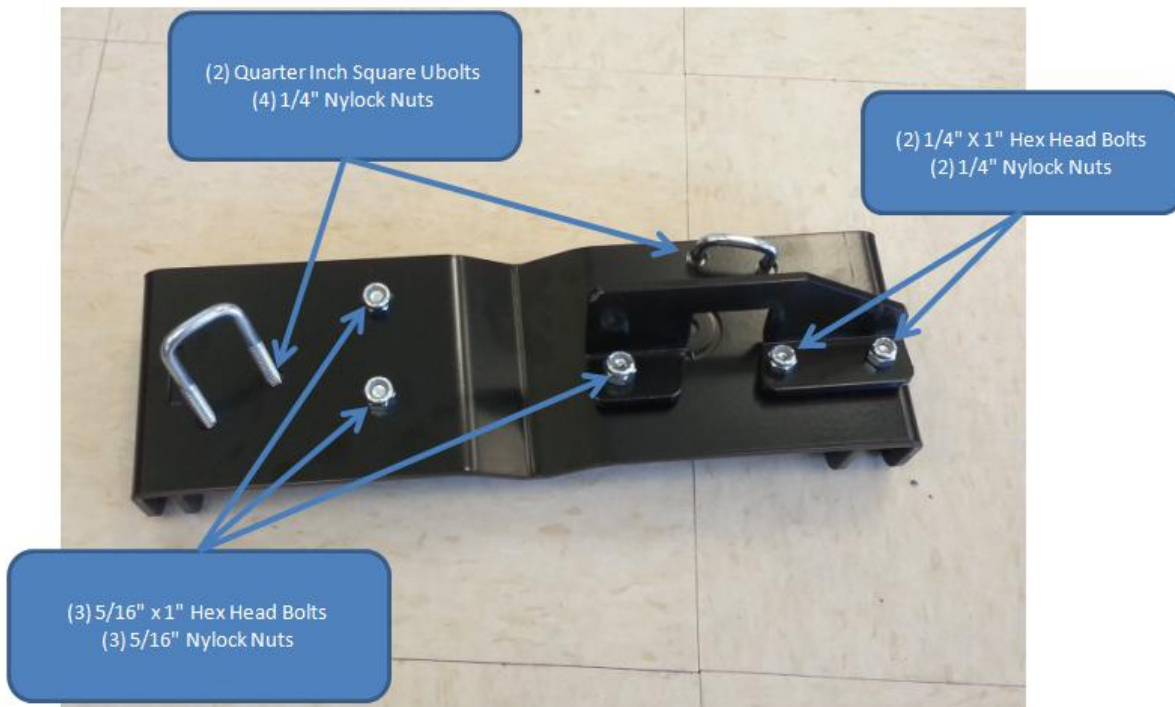
- Your ATV and/or plow system can cause death or injury, please use caution and common sense when operating your unit.
- Read your Plow Operator's Manual, your Winch Operator's Manual, and all warning labels before operating your ATV.
- Operate your ATV at a walking speed with the blade installed. Do not exceed 5 mph (8 km/h) even with the blade up.
- Do not operate the ATV on slopes greater than 10 degrees with the plow installed.
- Always lower the plow to the down position before leaving your ATV unattended.

SEVERE INJURY OR DEATH MAY RESULT IF YOU ARE NEGLIGENT.

Please verify that all hardware and parts are included in your package.

Kit Content:

Item Number	Description	Quantity
1	Frame Mounting Plate	1
2	Truss Bracket	1
3	5/16" Nylock Nut	3
5	5/16" x 1" Hex Head Bolt	3
6	5/16" Fender Washer	3
7	1/4" x 1" Hex Head Bolt	2
8	1/4" Square U-bolt	2
4	1/4" Nylock Nut	6



Plow Mount Assembly:

1. Install the frame mounting plate onto the bottom side of the skid pan as seen in Figure 1. The frame mounting plate has a round plug on the top side that will fit into the right front hole of the skid pan behind the A-arms.

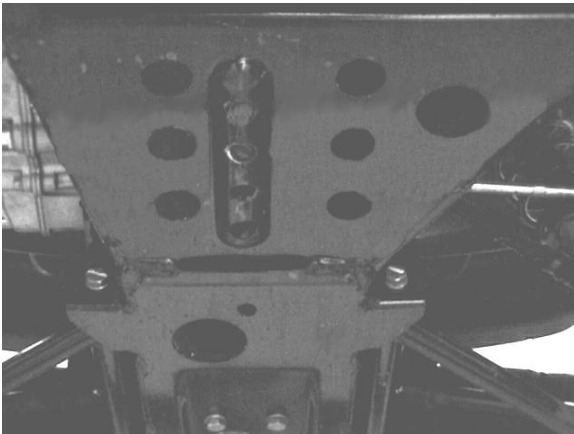


Figure 1

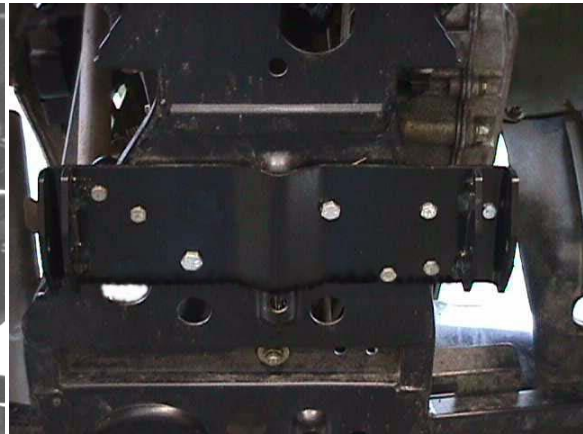


Figure 2

2. Use the 5/16" x 1" bolt on the right side of the bracket. Do not tighten at this time....just enough to hold the bracket in place. You must do this in order to properly align the truss bracket.
3. Attach the frame mounting plate and truss bracket to the frame with 1/4" square u-bolts, 1/4" nylock nuts and 1/4" bolts with 1/4" nylock nut as seen in Figure Two. Check to make sure the u-bolts can be installed before tightening the truss bracket fasteners. This can be checked by inserting one leg of a u-bolt through both outside u-bolt holes. When the bolt passes straight up through the bracket and next to the frame tube the fasteners can be tightened.

CAUTION:

USE EXTREME CAUTION WHEN DRILLING THROUGH THE SKIDPLATE. EVERY EFFORT HAS BEEN MADE TO ENSURE THAT THE HOLE POSITIONS ON THE CROSSMEMBER WILL NOT ALLOW THE DRILL BIT TO CONTACT ANYTHING ELSE ON THE BIKE. BUT VARIATIONS IN MANUFACTURING AND INSTALLATION MAY CHANGE THAT. KEEP AWAY ALL HANDS AND LIMBS THAT MAY BE IN THE PATH OF THE ROTATING BIT. ONLY DRILL THROUGH THE SKIDPLATE AND NOTHING ELSE ON THE BIKE. NOT DOING SO MAY SERIOUSLY DAMAGE/INJURE THE BIKE AND OPERATOR.

4. Finally, use a drill with a 1/4" bit to drill two holes in the skid pan so the u-bolts can be installed over the frame tubes. Drill the u-bolts from under the ATV using the holes in the frame bracket to determine the drilling location.



CAUTION:

FAILURE TO TIGHTEN THE MOUNTING BRACKET BOLTS MAY CAUSE SERIOUS DAMAGE TO YOUR PLOW MOUNT AND BIKE. BE SURE TO TIGHTEN THEM SNUGGLY.

Plow Installation:

1. Slide the plow into position with the tubes under the ATV. Lift the end of the tube assembly into position so the holes in the tube wings line up with the 3/8" holes in the frame brackets (Figure 2).
2. A Phillips head screwdriver may be used to align the holes. Insert both 3/8" pins and hook the retaining clips on the ends of the pins to secure the plow to the ATV.
3. The plate should now be a permanent part of your ATV and will not interfere with clearance. The plow can be easily attached and detached on the welded u-bolt with the clevis hook on a winch or a manual lift assembly.