



motoalliance

**VIPER PLOW SYSTEM / Honda Rancher 420
MA11119**

Thank you for purchasing the premium VIPER PLOW system. You now have a top-of-the-line plow system to using for shoving aside snow and dirt with the use of your ATV. Please note the following instructions and heed all warnings.

WARNING!!!

SEVERE INJURY OR DEATH MAY RESULT IF YOU IGNORE ANY OF THE FOLLOWING.

- Read the Plow Operator’s Manual, the Winch Operator’s Manual, and all warning labels before operating.**
- Operate ATV at a walking speed with the blade installed. Do Not exceed 5mph (8 km/h) even with the blade up.**
- Plow Cautiously, impact with a hidden or stationary object may cause the ATV to stop suddenly or go out of control.**
- Do Not operate the ATV on slopes greater than 10° with the plow installed.**
- Do Not stand or ride on the plow.**
- Stay clear of moving parts and joints. Keep others away when operating or adjusting plow.**
- Inspect the plow mechanism, fasteners, cable, and adjustments before operating. Replace all worn or damaged parts before operating.**
- Lower the plow to the down position before leaving the ATV unattended**



PARTS LIST

- 1 Plow Mount
- 2 5/16-18 X 2-3/16. U-Bolt (42021)
- 6 5/16. Flat Washer
- 4 5/16-18 Lock Nut
- 2 M8-1.25 X 45mm Hex Bolt
- 2 M8 Aluminum Spacer (AS50-16-32)

INSTALLATION

1. Remove the two outer M8 floorboard bolts. figure 1. Keep the M8 nuts for reassembly.



Figure 1 - Remove Bolts

2. Place the M8 spacers (B5) into position over the floorboard bolt holes, figure 2.



Figure 2 - Position Spacers

3. Place the plow mount (A1) into position over the spacers (B5), figure 3. Loosely secure the plow mount with two M8 X 45mm bolts (B4), 5/16. washers (B2), and the M8 nuts removed in step 1.

Note: Do not tighten at this time.

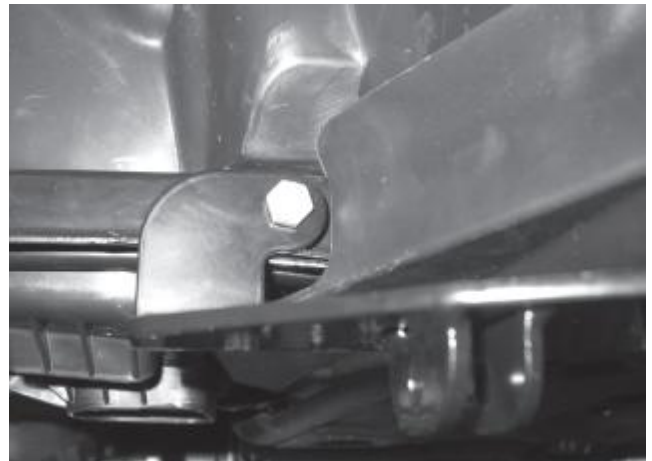


Figure 3 - Plow Mount Location

INSTALLATION CONT.

4. Center the plow mount on the vehicle. Mark the plow mount outline and slots onto the plastic skid plate with a center punch or similar pointed object, figure 4.



Figure 4 - Mark Plow Mount Slots

5. Remove the twelve M6 bolts securing the stock plastic skid plate and remove the skid plate, figure 5. Keep the M6 bolts for reassembly.

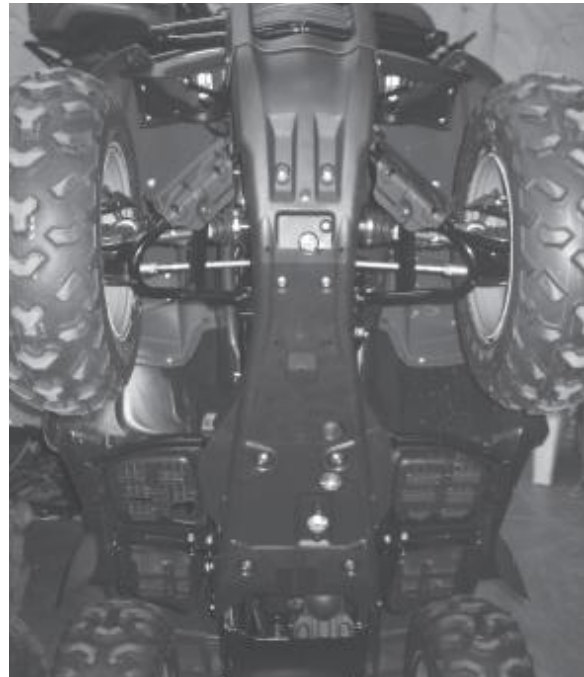


Figure 5 - Remove Plastic Skid Plate

6. Place the plow mount back into position on the vehicle. Slide the u-bolts (B1) down around the frame tubes and through the slots in the mounting plate, figure 6. Check the position of the u-bolt in the slot. Remove the plow mount after the u-bolt orientation has been noted.



Figure 6 - Check U-Bolt Position

INSTALLATION CONT.

7. Mark the location of the u-bolts, as noted in step 6, on the slots scribed onto the skid plate. Use the marks as reference to drill four clearance holes for the u-bolts in the plastic skid plate, figure 7.

Note: If the u-bolts do not pass freely through the plastic skid plate, then remove the plow mount and skid plate. Use a round file to enlarge the holes for the u-bolts as necessary. Repeat step 8 once the holes have been adequately modified.



Figure 7 - Skid Plate Holes

8. Loosely fasten the skid plate onto the vehicle. Repeat steps 2 and 3 to loosely fasten the plow mount. Slide the two u-bolts (B1) around the frame tubes and through the skid plate and plow mount, figure 8. Loosely fasten the u-bolts with the four 5/16. flat washers (B2) and four 5/16-18 lock nuts (B3).



Figure 8 - U-Bolt Check

9. Tighten all hardware (M6 skid plate bolts, 5/16-18 lock nuts, M8 bolts, and M8 nuts) to the recommended torque values found on page 2.



Figure 9 - Plow Mount Installed

Plow Installation:

1. Slide the plow into position with the tubes under the ATV. Lift the end of the tube assembly into position so the holes in the tube wings line up with the 3/8" holes in the frame brackets (Figure 2).
2. A Phillips head screwdriver may be used to align the holes. Insert both 3/8" pins and hook the retaining clips on the ends of the pins to secure the plow to the ATV.
3. The plate should now be a permanent part of your ATV and will not interfere with clearance. The plow can be easily attached and detached on the welded u-bolt with the clevis hook on a winch or a manual lift assembly.

Plow mount installation is now complete.

MAINTENANCE/CARE

Inspect all metal parts on the plow, plow mount, and related hardware. Replace all parts that appear rusted or deformed prior to use.

Inspect all nuts and bolts on the plow, plow mount, and related hardware prior to each use.

Tighten all nuts

and bolts that appear to be loose. Stripped, fractured, or bent bolts or nuts need to be replaced immediately.

. Check all cables prior to use. Replace cables that are worn or frayed.

. Check all moving and rotating parts. Remove debris that may inhibit the part from moving freely.

