



motoalliance

VIPER PLOW SYSTEM / Yamaha Grizzly 700 MA11125

Thank you for purchasing the premium VIPER PLOW system. You now have a top-of-the-line plow system to using for shoving aside snow and dirt with the use of your ATV. Please note the following instructions and heed all warnings.

WARNING!!!

SEVERE INJURY OR DEATH MAY RESULT IF YOU IGNORE ANY OF THE FOLLOWING.

–Read the Plow Operator’s Manual, the Winch Operator’s Manual, and all warning labels before operating.

–Operate ATV at a walking speed with the blade installed. Do Not exceed 5mph (8 km/h) even with the blade up.

-Plow Cautiously, impact with a hidden or stationary object may cause the ATV to stop suddenly or go out of control.

--Do Not operate the ATV on slopes greater than 10° with the plow installed.

–Do Not stand or ride on the plow.

Stay clear of moving parts and joints. Keep others away when operating or adjusting plow.

–Inspect the plow mechanism, fasteners, cable, and adjustments before operating. Replace all worn or damaged parts before operating.

–Lower the plow to the down position before leaving the ATV unattended.

PARTS LIST

4 Flat Washer, 5/16"
4 Lock Washer, 10mm
1 Bolt, 3/8" dia – 1" long
4 Nut Nylock, 5/16"
6 Nut Nylock, 1/4"
1 Nut Nylock, 3/8"
4 Bolt, 1/4" dia - 1 1/4" long
4 1/2" Spacers (AS38-14-32)
4 Bolt, 10mm – 1.25 thread – 25mm long
2 U-Bolt, 5/16" dia – 1 1/2" wide (42021)
1 Mount Bracket Right
Mount Bracket Left
1 Mount Crossmember

Plow Mount Assembly:

Remove the forward two bolts under the bike on both sides that attach the foot rest to the bike chassis. Take the mounting brackets in the kit and place them over the holes. Attach the mounting brackets to the bike using four 10mm dia – 25mm long bolts, and 10mm lock washers as shown in figure 1. The lock washer should be placed between the head of the bolt and the flat washer. ***Do not tighten the bolts all the way***, you will do this later in the installation. Installed properly, the brackets will bend inward.

Place cross-member (73654) between the two brackets. Insert the plow mounting pins, this will help align the mount. The top holes on the cross-member should be toward the front of the bike. Using four 1/4" bolts and nuts, attach the cross-member the brackets. Each bolt will go through a 1/2" spacer positioned between the cross-member and the brackets as shown in figure 2. Tighten all bolts down snugly.

Using the existing cross-member holes as locators, drill through all four cross-member holes with a 5/16" drill bit as shown in figure 3. Drill only through the skid-plate and nothing else on the bike. The plow mounting pins can now be removed and stored.

CAUTION

USE EXTREME CAUTION WHEN DRILLING THROUGH THE SKIDPLATE. EVERY EFFORT HAS BEEN MADE TO ENSURE THAT THE HOLE POSITIONS ON THE CROSSMEMBER WILL NOT ALLOW THE DRILL BIT TO CONTACT ANYTHING ELSE ON THE BIKE. BUT VARIATIONS IN MANUFACTURING AND INSTALLATION MAY CHANGE THAT. KEEP AWAY ALL HANDS AND LIMBS THAT MAY BE IN THE PATH OF THE ROTATING BIT. ONLY DRILL THROUGH THE SKIDPLATE AND NOTHING ELSE ON THE BIKE. NOT DOING SO MAY SERIOUSLY DAMAGE/INJURE THE BIKE AND OPERATOR.

Place the two 1-1/2" width U-bolts over the chassis tubing, through the skid-plate, and through the cross-member as shown in figure 4.

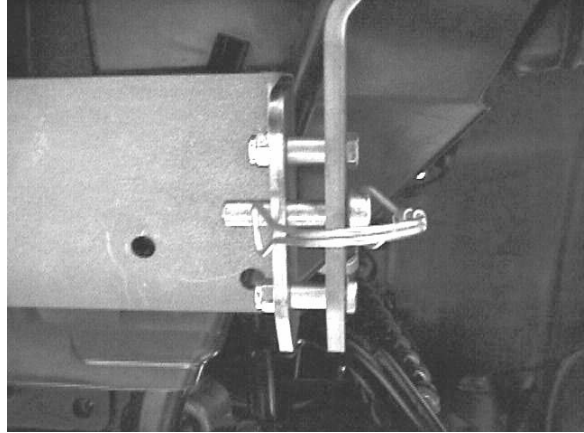
Drill more material off the skid-plate if necessary. Now attach the four 5/16" nuts and flat washers to the U-bolts and tighten snugly. ***Now go back and tighten all four bolts on the mounting brackets as shown in figure 1.***

CAUTION
FAILURE TO TIGHTEN THE MOUNTING BRACKET BOLTS MAY CAUSE SERIOUS DAMAGE TO YOUR PLOW MOUNT AND BIKE. BE SURE TO TIGHTEN THEM SNUGLY.

The plow mount assembly should look like the one in figure 5. *Double check to make sure all the bolts are fastened tightly.* Once you have done that, your installation of the plow mount is completed. Attach your plow to the mount using the plow mount pins.

Plow Installation:

Slide the plow into position with the tubes under the ATV. Lift the end of the tube assembly into position so the holes in the Tube Wings line up with the 3/8" holes in the frame brackets (Figure 2). A Phillips head screw driver may be used to align the holes. Insert both 3/8" pins and hook the retaining clips on the ends of the pins to secure the plow to the AT



1/4" nut 1/2" spacer 1/4" bolt pin

FIGURE TWO: Fasteners

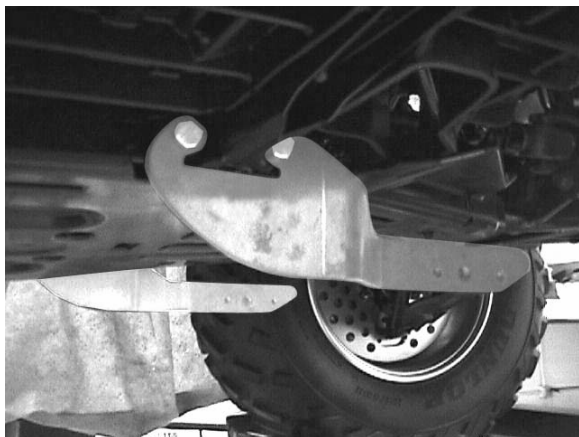


FIGURE ONE: Mounting Brackets

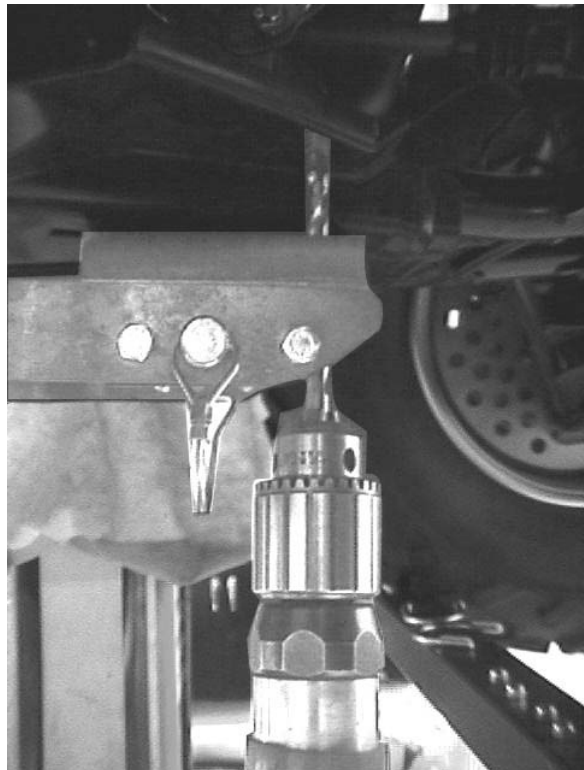


FIGURE THREE: Drill Through Skid Plate

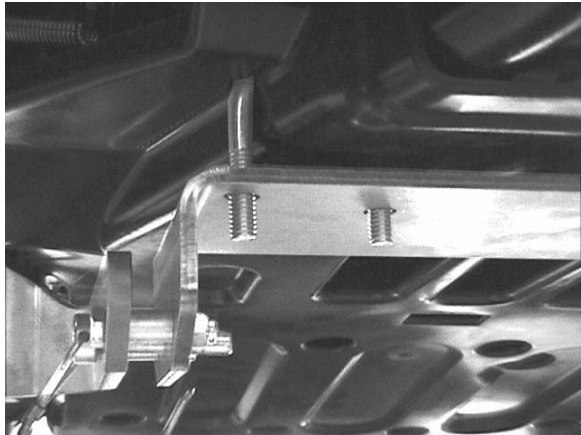


FIGURE FOUR: U-Bolt and Mount



FIGURE FIVE: Completed Mount