



***motoalliance***

## **VIPER PLOW SYSTEM / Suzuki King Quad MA11151**

**Thank you for purchasing the premium VIPER PLOW system. You now have a top-of-the-line plow system to using for shoving aside snow and dirt with the use of your ATV. Please note the following instructions and heed all warnings.**

### **WARNING!!!**

**SEVERE INJURY OR DEATH MAY RESULT IF YOU IGNORE ANY OF THE FOLLOWING.**

**–Read the Plow Operator’s Manual, the Winch Operator’s Manual, and all warning labels before operating.**

**–Operate ATV at a walking speed with the blade installed. Do Not exceed 5mph (8 km/h) even with the blade up.**

**-Plow Cautiously, impact with a hidden or stationary object may cause the ATV to stop suddenly or go out of control.**

**--Do Not operate the ATV on slopes greater than 10° with the plow installed.**

**–Do Not stand or ride on the plow.**

**Stay clear of moving parts and joints. Keep others away when operating or adjusting plow.**

**–Inspect the plow mechanism, fasteners, cable, and adjustments before operating. Replace all worn or damaged parts before operating.**

**–Lower the plow to the down position before leaving the ATV unattended.**

## **PARTS LIST:**

- 4 U-Bolt, 5/16-18x1.5"x2.69" (Fastenal: 42018)
- 8 5/16 Lock Nuts
- 8 5/16 Washers
  
- 1 Frame Mount, King Quad

## **INSTALLATION**

1. To install the plow mount to the underside of the vehicle, remove the factory skid plate. This will require the use of a 10mm socket, as shown in Figure 2.

2. Once the skid plate is removed. Use the plow mount as a template for holes to be drilled, as shown in figure3.

3. Place the plow mount 6" in front of the circular hole in the skid plate, as shown in figure 4.

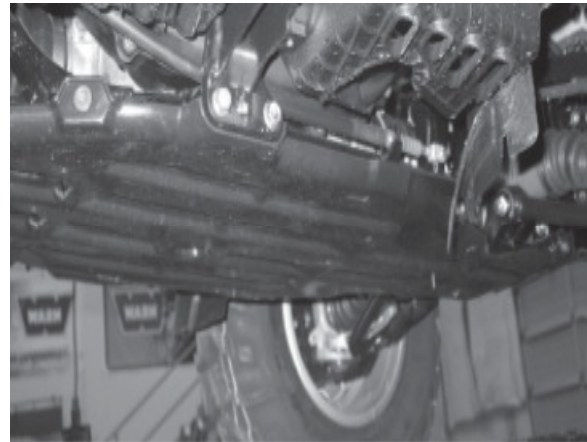
4. Place the edge of the plow mount 3/16" away from the edge of the skid plate. The opposing edge of the plow mount will hang partially over the edge of the skid plate. Make sure the plow mount is perpendicular to the skid plate. Mark all hole locations on the skid plate by scribing the plastic with a sharp object. Using a 11/32" drill bit, drill through the skid plate, as shown in figure 5.

5. Reinstall the skid plate with the six fasteners removed in step 2. Install the plow mount with the provided fasteners by placing the U-Bolts over the frame with the threaded ends protruding through the plow mount. Attach the 5/16" washers and nuts as shown in Figure

6. It is important that all fasteners are loosely installed until final assembly. It may be necessary to slot the hole locations on the skid plate for the U-Bolts to line up with the skid plate. The picture shown is from the rear of the bike looking forward.

7. Tighten all fasteners securely. Torque 5/16" bolts to 20ft. lbs.

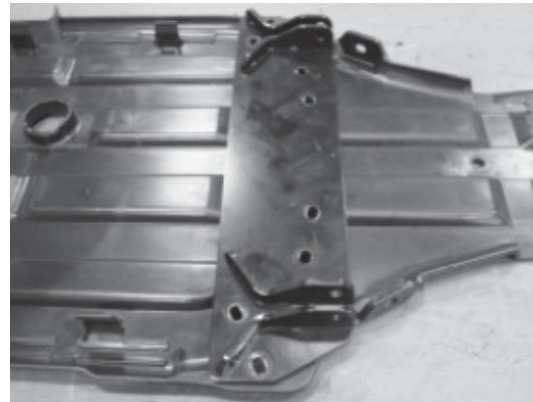
8. If you haven't already done so, assemble the plow per the instructions included in the plow kit. Attach the plow to the mount using the pins provided in the plow kit.



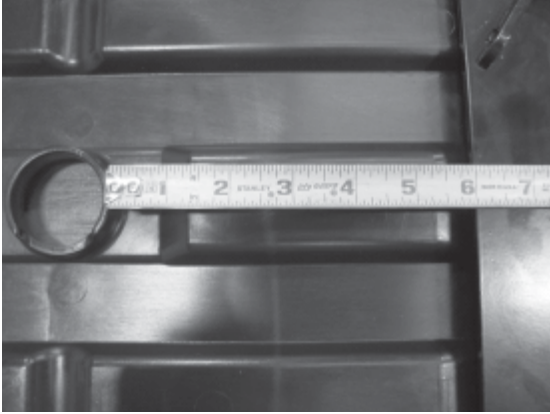
**REMOVE SIX BOLTS**

**SKID PLATE**

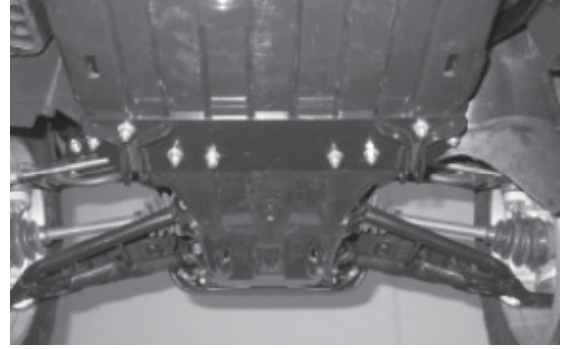
**FIGURE 2**



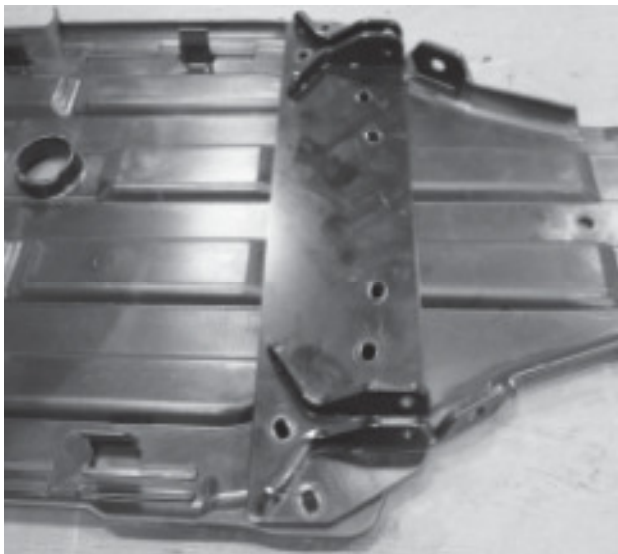
**FIGURE 3**



**FIGURE 4**



**FIGURE 6 / Front of Bike**



**MARK ALL HOLE LOCATIONS AND SCRIBE**      **3/16"**

**FIGURE 5**