



***motoalliance***

# **MOTOALLIANCE PLOW MOUNT**

**MA11765**

**CFMOTO U-Force**

Thank you for purchasing our MotoAlliance plow mount. You now own a premium custom plow mount allowing you to use your plow with your SxS. Please note the following instructions and heed all warnings.

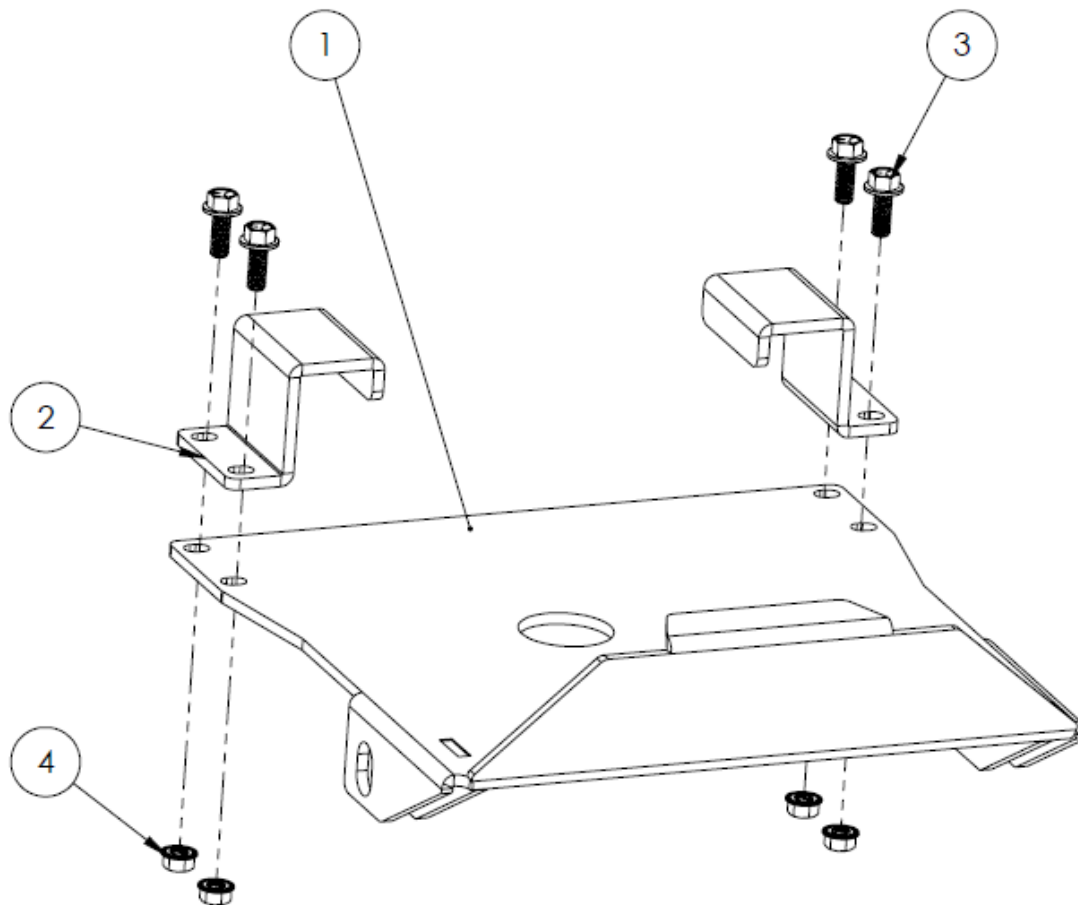
- Please use common sense when operating your SxS
- Be observant of moving parts causing entanglement use extreme caution!

**SEVERE INJURY OR DEATH MAY RESULT IF YOU ARE NEGLIGENT.**

Please verify that all hardware and parts are included in your package.

**Kit Content:**

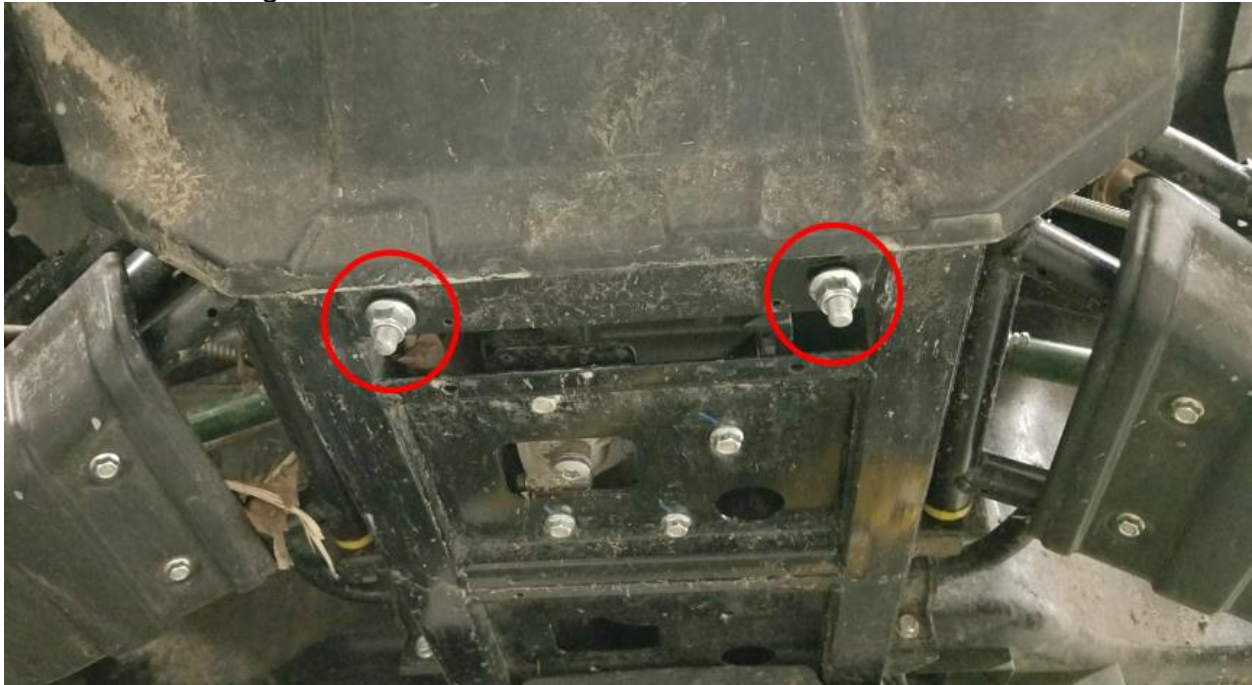
Item Number	Description	Quantity
1	MA11765 Main Mounting Plate	1
2	MA11765-4 Rear Support Bracket	2
3	3/8"-16 x 1.00" Serrated Flange Bolt	4
4	3/8"-16 Serrated Flange Nut	4



**Figure 1**

1. Begin by removing the front fascia from the bumper.

2. Remove the hardware that attaches the bottom of the bumper to the frame as shown in Figure 2 and set aside for future use.



**Figure 2**

3. Slide the front lip of the MA11765 mount over the front frame crossmember as shown in Figure 3. The mount will remain in place if pushed on fully.



**Figure 3**

4. Hang the two MA11765-4 Rear Support Brackets over the side chassis members toward the rear of the MA11765 Main Mounting Plate as shown in Figure 4. Insert 3/8" x 1" Serrated Flange Bolts from the top of the Support Brackets and loosely thread the Serrated Flange Nuts on the bolts. (NOTE: Do not tighten at this time)



**Figure 4**

5. Replace the hardware removed in Step 2. Make sure it runs through the bumper and through the MA11765 Main Mounting Plate as shown in Figure 5. Spin the nuts on but do not tighten down at this time.



**Figure 5**

- 
6. Verify that the MA11765 Main Mounting Plate is pressed firmly to the rear of the vehicle so that the front lip of the MA11765 bracket is against the front crossmember of the vehicle frame.
  7. Tighten the front 3/8" bolts, do not exceed 23ft-lbs of torque.
  8. Tighten the rear 3/8" bolts, do not exceed 23ft-lbs of torque.
  9. Reinstall any plastics removed in Step 1. On some models It may be necessary to trim the bottom corners of the plastic facia for optimal fitment of the plow mount.
  10. Attach the plow using the quick release pins included with DENALI Plow Kits.

## After First Time Use

After the first use of your plow, check and retighten all hardware at least once, in case your frame has flexed and the Plow Mount has loosened.