



DENALI Plow Mount MA11772 Intimidator

Thank you for purchasing our DENALI plow mount. You now own a premium custom plow mount to allow you to use your plow with your SxS. Please note the following instructions and heed all warnings.

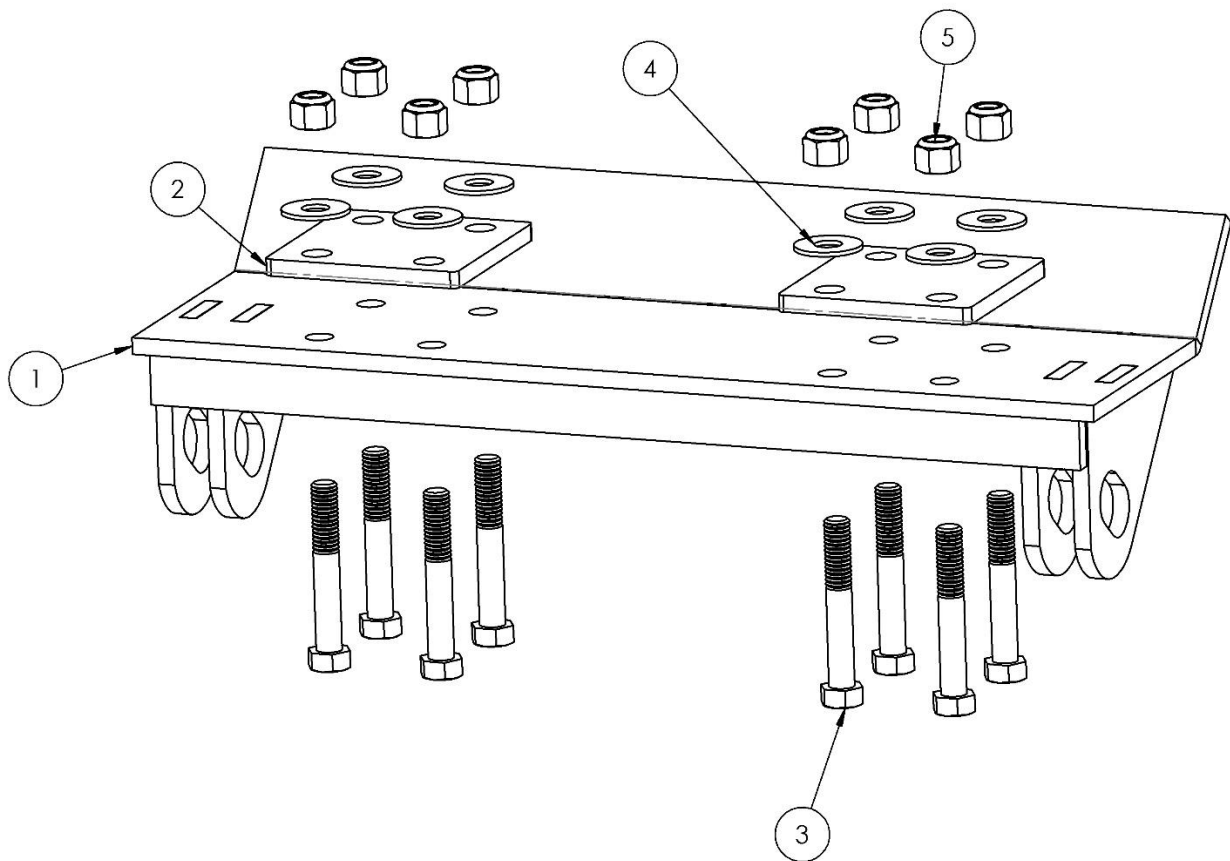
- Your UTV/SxS and/or plow system can cause death or injury, please use caution and common sense when operating your unit.
- Read your Plow Operator Manual, your Winch Operator Manual, and all warning labels before operating your UTV/SxS.
- Operate your UTV/SxS at a walking speed with the blade installed. Do not exceed 5 mph (8 km/h), even with the blade up.
- Do not operate the UTV/SxS on slopes greater than 10 degrees with the plow installed.
- Always lower the plow to the down position before leaving your UTV/SxS unattended.

SEVERE INJURY OR DEATH MAY RESULT IF YOU ARE NEGLIGENT.

Please verify that all hardware and parts are included in your package.

Kit Contents:

| Item Number | Quantity | Part Number |
|-------------|----------|---------------------------|
| 1 | 1 | MA11772-W1 |
| 2 | 2 | MA11772-4 |
| 3 | 8 | HBOLT 0.3750-16x2.5x1-S |
| 4 | 8 | Regular Flat Washer 0.375 |
| 5 | 8 | Nylock Nut 0.375 |



Intimidator Installation Instructions

1. Remove the skid plate hardware. See **Figure 1** and **2**.

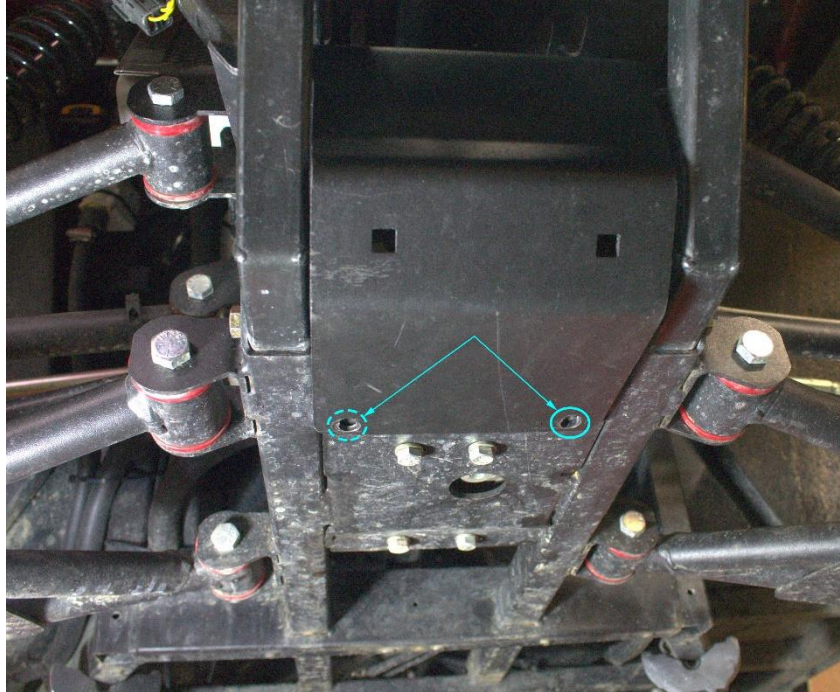


Figure 1

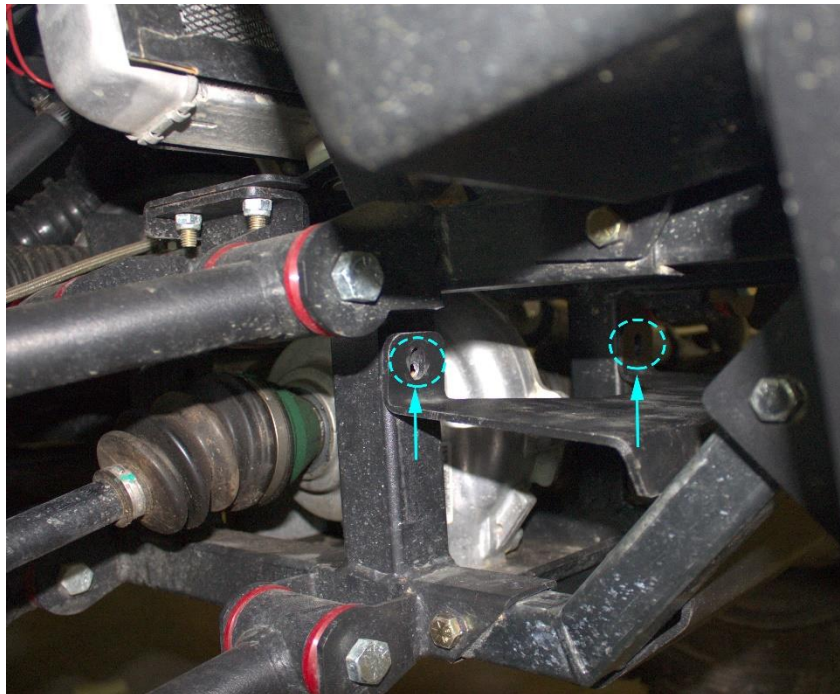


Figure 2

2. Remove the skid plate.
3. Align the plow mount holes around the frame.
4. Secure the plow mount to the frame of the vehicle with the provided hardware. See **Figure 3**.

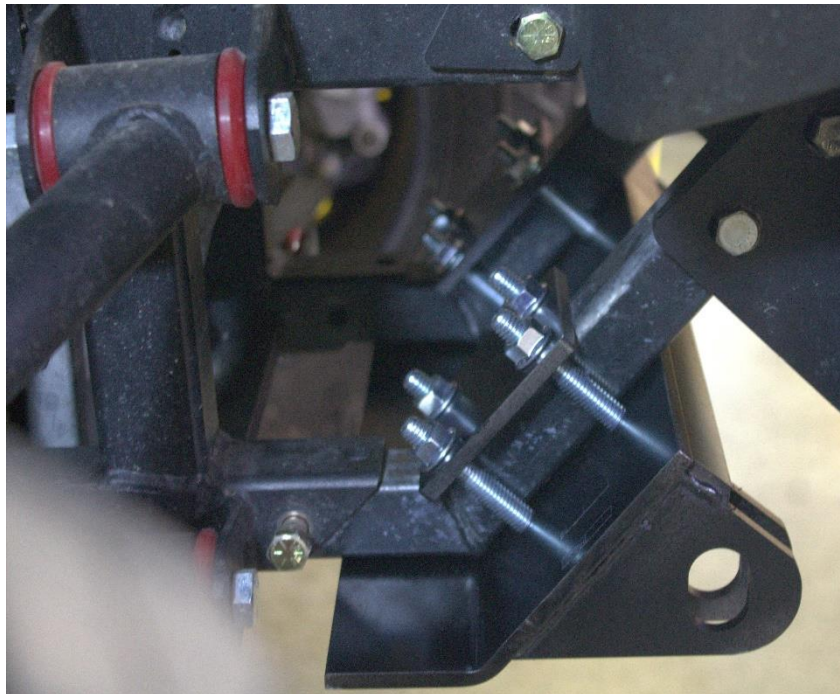


Figure 3

5. Retighten all hardware after first use.