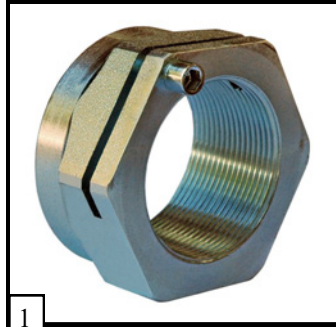
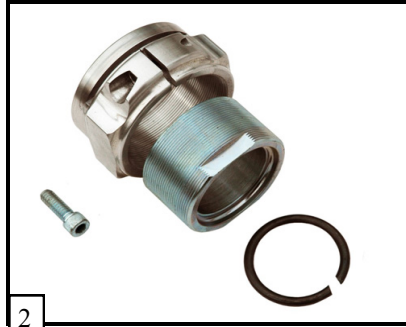


# Axle locking nut (Posi\*Lock) Explained

## Durablue makes 3 styles of Posi Lock nuts.



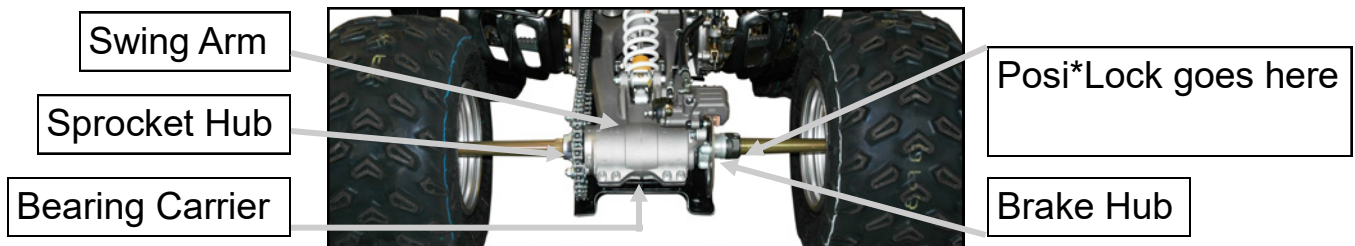
1  
For stock and Durablue Heavy duty axles.



2  
For Eliminator and X-33 axles and some stock axles (3 Piece).



3  
Brake Hub Posi\*Lock combo. (Anti Fade Brake Hub)



The Posi\*Lock nut is the last piece to go on when installing an axle. The purpose of the Posi\*Lock nut is to keep the axle from moving back and forth in the bearing carrier.

There are 3 styles of Posi\*Lock nuts. The first (see image 1) Posi\*Lock nut fits stock and heavy duty axles. It is a threaded nut which uses an Allen screw to pinch the threads, keeping the nut from coming loose.

The second (see image 2) Posi\*Lock is referred to as a 3 piece Posi\*Lock system. This nut is used for Durablue Eliminator axles, X-33 axles and some stock axles. This Posi\*Lock works by rotating the nut and holding the inner sleeve still. By doing this the inner sleeve expands and tightens up the axle and components.

The third Posi\*Lock system (see image 3) is similar to the second but combines a brake hub with the Posi\*Lock nut. This saves weight and adds real strength to the Posi\*Lock system. It also disperses heat, extending the life of the brake rotor.

**Flat side goes against sprocket or brake hub.**

**Threaded inner sleeve.**

**Inner sleeve groove covers c-clip.**

**c-clip**

**This nut is also available in steel.**

**How it works**  
By rotating the inner sleeve, the nut assembly expands and contracts pushing the axle components against the c-clips on either side of the axle..

**The Allen set screw tightens and pinches the threads, keeping the inner sleeve in place.**

### What does the C-Clip do?

The c-clip keeps everything from sliding off the axle. The c-clip sits in a groove, and with enough force the c-clip will expand and slide out of the groove. The inner sleeve of the Posi\*Lock nut will cover the top of the c-clip and prevent it from expanding and popping out of the groove. If the Posi\*Lock nut is installed backwards, the flat side of the Posi\*Lock nut will push the c-clip out of the groove. The flat side of the Posi\*Lock nut always goes up against the brake or sprocket hub.

To remove the c-clip, rotate the nut so the inner sleeve screws into the aluminum nut. Once you expose the c-clip, use 2 flat tip screw drivers to pop the c-clip out of the groove. The c-clip can fly off the axle at high velocity so be cautious.

**How tight should the Posi Lock nut be?** Tighten the Posi Lock nut by hand then use a wrench to rotate the nut until it feels somewhat tight. You just need to get the Posi\*Lock snug. If you over-tighten the Posi\*Lock nut you may destroy your bearings. Snug it down but don't kill it!