



Read before Installation

Read before Installation

This product is designed for use on ATVs and/or RUVs to increase ground clearance and fender clearance. Purchasers should be aware that use of this product may increase the frequency of required maintenance, part wear, and will raise the center of gravity on your ATV and/or RUV, increasing risk of roll-over, injury and death on all types of terrain. It is your responsibility to always inform other operators and passengers of this vehicle about the added risks.

High Lifter Products, products are designed to best fit users ATV/RUV under stock conditions. Adding, modifying, or fabricating any OEM or aftermarket parts will void warranty. High Lifter Products, products could interfere with other aftermarket accessories. If the user has aftermarket products on machine, contact High Lifter Products to verify that they will work together. Adding aftermarket suspension components and/or more aggressive tires can cause breakage of other OEM driveline components such as differentials, axles or drive shafts.

We recommend that wider tires and/or wheel spacers be used to achieve a wider stance and to improve stability of the ATV and/or RUV. Riders should be advised that the handling characteristics of a taller ATV and/or RUV are different and require extra care when riding, particularly on side hills or off-camber situations. If you further raise the center of gravity by adding taller tires, heavy loads to racks or seats, or by any other means, the ATV and/or RUV must be operated with even more care, at slower speeds and on relatively flat ground. All turns should be done at a slow speed, even on level ground.

Operation of an ATV and/or RUV with or without modified suspension components, while or shortly after consuming alcohol or drugs, subjects the rider to the risk of serious bodily harm or possible death. This risk is compounded if the rider does not wear an approved helmet and other safety gear. High Lifter urges that all approved safety gear be worn when riding an ATV and/or RUV as a driver or passenger.

By purchasing and installing High Lifter Products, products, user agrees that should damages occur, High Lifter Products will not be held responsible for loss of time, use, labor fees, replacement parts, or freight charges. High Lifter Products will not be held responsible for any direct, indirect, incidental, special, or consequential damages that result from any product purchased from High Lifter Products. The total liability of seller to user for all damages, losses, and causes of action, shall not exceed the total purchase price paid for the product that gives rise to the claim.

If this product is not what you expected, or is not consistent with your intended use, you should return the product immediately to the seller, before installation, for a refund of the purchase price; less any fees. After installation, product is warranted for 90 days for defects in workmanship and materials. High Lifter Products will warranty only parts provided by High Lifter Products. Any damage or problems with OEM housings, bearings, seals, or other manufacturer's products will not be covered by High Lifter Products. Parts and products will not be warranted if item was not installed properly, misused, or modified.

Dealers and other Installers

You are responsible for informing your customer and end user of the information contained above and the increased potential hazards of operating an ATV and/or RUV equipped with modified suspension components. If you install any suspension modifying components, it is your responsibility to also install the warning label prominently in view of the driver and in prominent view of the driver and passenger on RUVs and multi-passenger ATVs. They should also be instructed to notify anyone operating the vehicle, as well as any passengers, that said vehicle is modified.

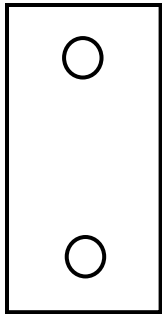
As discussed above, it is critically important that they be instructed in the need for slower speed operation, regardless of terrain, after this lift kit is installed.

This lift kit contains the following parts:

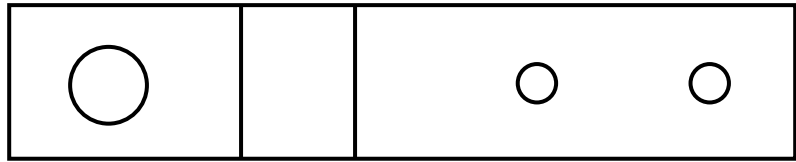
10x45mm Bolts	8
10mm Nuts	8
1" x 1 3/4" Hex Head Bolt	4
1/4" Nut	4
Lift Brackets	10
Spacers	6
Pages of Instructions	5

Parts List

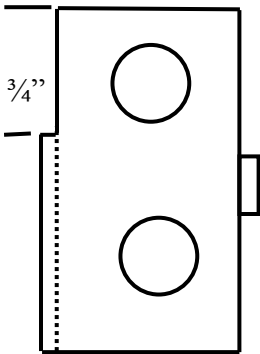
“A” - 2



“B” - 2



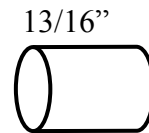
“C” - 2



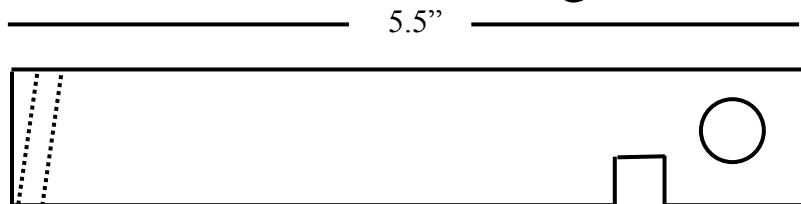
“D” - 2



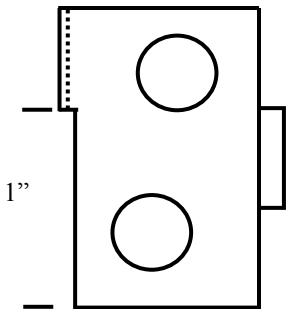
“F” - 4



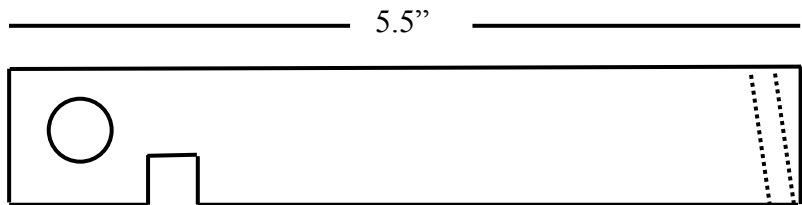
“H” - 1 (Right)



“G” - 2



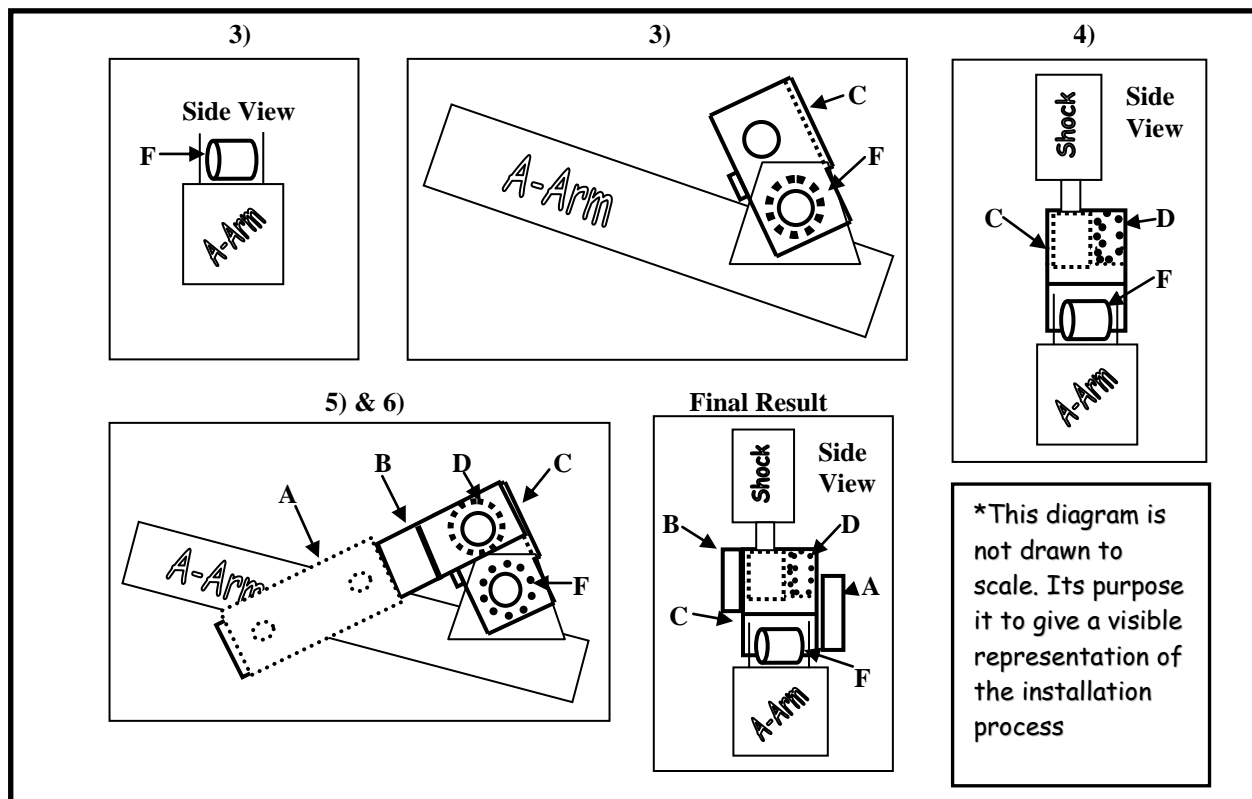
“I” - 1 (Left)



- 1) Place jack under center of ATV front end and lift until front wheels clear the ground. Be careful to support ATV properly so that it is secure, but so that the A-arms and shocks can droop to full extension.
- 2) Remove front wheels and shock.
- 3) Place spacer "F" on the inside of the of the shock mount, placing one bracket "C", with the open end down and outwards, over the shock mount. Secure this bracket with a **10x45mm bolt** and a **10mm nut** that's provided with the kit.
- 4) Place bottom of shock inside top of bracket "C" and placing one spacer "D" between the front of the shock and bracket "C" securing it with a new **10x45mm bolt**. **NO NUT YET!**
- 5) Next, place bracket "B" on bracket "C" (on the rear and outside of bracket "B") securing it with a new **10mm Nut**. (**NOTE:** The angle of the bracket should extend rearward.)
- 6) Secure Bracket "B" to the rear of the A-arm and bracket "A" on the front of the A-arm with 2 **1" x 1 3/4 Hex Head Bolt**, secure with **1/4" Nylon Lock Nut**. Before tightening all nuts ensure the angle of the shock is at the same original angle.
- 7) Tighten all bolts to manufacturer specifications.
- 8) Repeat this procedure for the other side.
- 9) Install the wheels, torque wheel lugs to manufacturer specifications, lower and remove jack. Check for clearance problems or misalignment.

Front Right Diagram

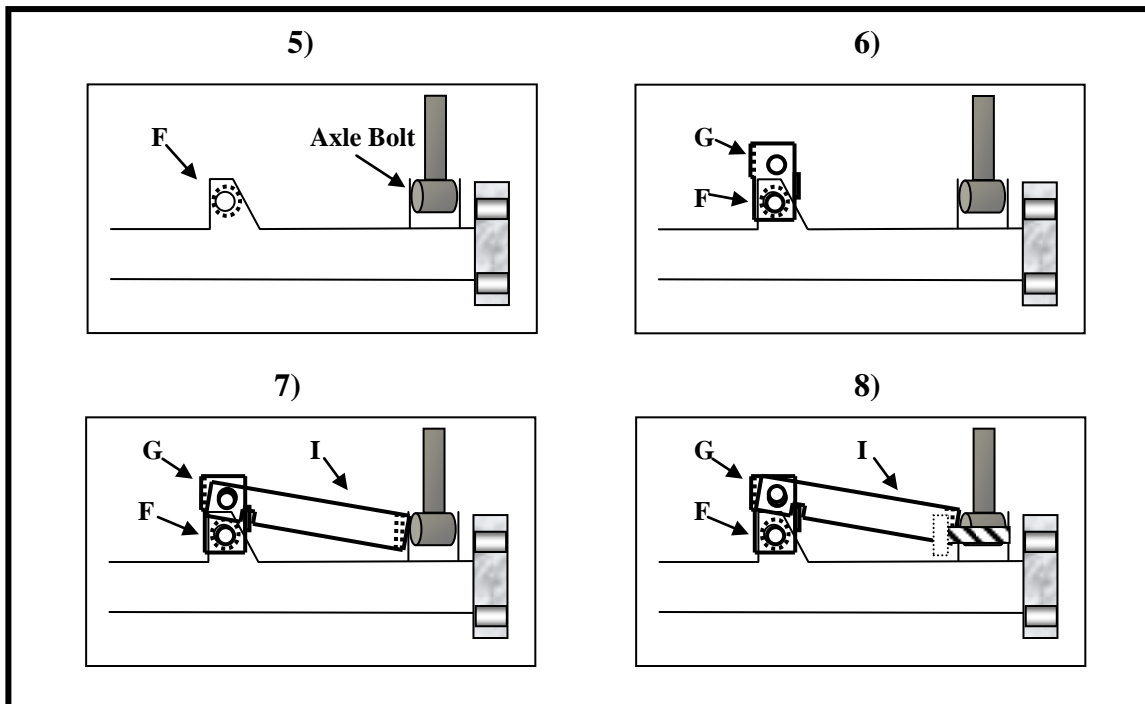
(REAR VIEW)



Rear Lift

- 1) Place jack under the center of the ATV not the differential and lift until the weight is off the suspension. Be careful to secure ATV properly so as not to fall off the jack.
- 2) Remove wheels and shocks.
- 3) Remove the axle-housing bolts. (See Diagram)
- 4) After removing the shocks, jack the ATV up an additional 1"-2".
- 5) Place spacer "F" on the inside of the shock mount. (You may have to tap the shock mount open slightly to place spacer "F" between the mount. This is a very snug fit).
- 6) Place bracket "G" with the 1" notch down and facing outwards on bottom of shock.
- 7) The next step is different from the left and right side, for the reason that bracket "I" is specifically for the left side, and bracket "H" is specifically for the right side.
 - a) **Rear-Left:** Place bracket "I" with notch down and inside of bracket "G"/behind the shock eyelet, securing it with the new **10x45mm bolt** and **10mm Nut**.
 - b) **Rear-Right:** Place bracket "H" with notch down and inside of bracket "G"/behind the shock eyelet, securing it with the new **10x45mm bolt** and **10mm Nut**.
- 8) Now secure the short tab on bracket "I" onto the axle housing using the OEM axle-housing bolt.
- 9) Next, ensure the angle of the shock is the same as the manufacturer's original angle, and tighten all bolts to required torque specifications.
- 10) Check for clearance problems or misalignment.

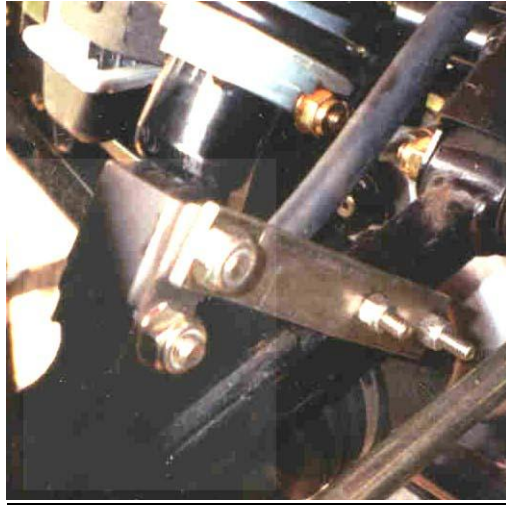
Rear Installation Diagram



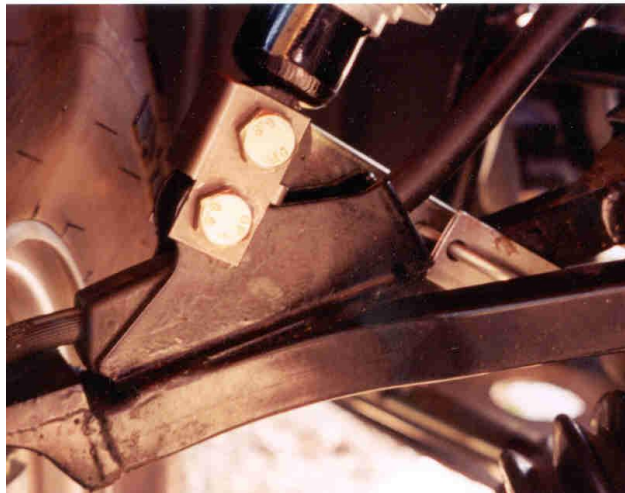
Note: VERY IMPORTANT

After installing front and rear lift you may notice that with the shocks "unloaded", when you first lower the jack, your front-end alignment may look out of adjustment. After assuring that everything is tight and there are no clearance problems, ride the ATV a short distance to "reload" the suspension. Check the front-end alignment. Many ATV's we have lifted need no adjustment, however with Artic Cat's in particular you need to check, and if needed adjust toe in/out per the Owners Manual specifications. If it is out of adjustment it will affect handling and tire wear.

Front Lift
Front Left Installation (Rear View)



Front Left Installation (Front View)



Rear Installation (Rear View)





High Lifter Lifetime Warranty

From the beginning, High Lifter has engineered and manufactured some of the toughest, most durable products on the market. That's why this product comes with a Lifetime Warranty. It's our promise that High Lifter will never let you down.

- The **Lifetime Warranty** covers products sold to the original purchaser only and is not transferable. The term of the warranty is for the lifetime of the vehicle in question.
- Normal wear and tear items and finishes, such as, but not limited to: Heim joints, tie rod ends, ball joints, bearings, seals, bushings, bushing sleeves, zinc plating , powder coating, or chipping and discoloration of any finish is not covered.
- High Lifter will ship the replacement product after the returned product has been inspected by High Lifter staff.
- The warranty shall not include claims for damages, installation time or labor charges, economic losses, inconvenience, transportation, towing, down time, direct or indirect or consequential damages or delay resulting from any defect.
- The warranty does not apply to products that have been improperly applied or improperly installed.

Making a warranty claim

1. All claims must be accompanied by the part and the original sales receipt or other acceptable proof of purchase from the original owner.
2. All warranties must be accompanied with a Return Merchandise Authorization (RMA) number.
3. When shipping the damaged product:
 - a. Write the RMA number on the outside of the box.
 - b. Also include the RMA number, proof of purchase and any notes inside the box.
 - c. Please keep your tracking number and shipment information.
4. The customer is responsible for shipping the product to High Lifter--return shipping within the lower 48 states will be paid by High Lifter products. With all warranty claims, only standard shipping services apply.
5. High Lifter will process your order within 24 business hours of receiving the returned item.