

HIGHLIFTER

Can-Am Commander Lift Kit Installation Instructions

Read Before Installation

This product is designed for use on ATVs and/or RUVs to increase ground clearance and fender clearance. It is designed for utility type, slow-speed use on relatively flat terrain in deep mud or snow. Although we have many thousands of satisfied lift kit customers and over 1,800 franchised dealers selling and installing lift kits, purchasers should be aware that use of this product may increase the frequency of required maintenance, part wear, and will raise the center of gravity on your ATV and/or RUV, increasing risk of roll-over, injury and death on all types of terrain. It is your responsibility to always inform other operators and passengers of this vehicle about the added risks.

We recommend that wider tires and/or wheel spacers be used to achieve a wider stance and to improve stability of the ATV and/or RUV. Riders should be advised that the handling characteristics of a taller ATV and/or RUV are different and require extra care when riding, particularly on side hills or off-camber situations. If you further raise the center of gravity by adding taller tires, heavy loads to racks or seats, or by any other means, the ATV and/or RUV must be operated with even more care, at slower speeds and on relatively flat ground. All turns should be done at a slow speed, even on level ground.

Operation of an ATV and/or RUV with or without a lift kit, while or shortly after consuming alcohol or drugs, subjects the rider to the risk of serious bodily harm or possible death. This risk is compounded if the rider does not wear an approved helmet and other safety gear. High Lifter urges that all approved safety gear be worn when riding an ATV and/or RUV as a driver or passenger.

Dealers and other Installers

You are responsible for informing your customer and end user of the information contained above and the increased potential hazards of operating an ATV and/or RUV equipped with a lift kit. If you install the lift kit, it is your responsibility to also install the warning label prominently in view of the driver and in prominent view of the driver and passenger on RUVs and multi-passenger ATVs. They should also be instructed to notify anyone operating the vehicle, as well as any passengers, that a lift kit is installed.

As discussed above, it is critically important that they be instructed in the need for slower speed operation, regardless of terrain, after this lift kit is installed.

Parts Diagram

Front Lift Brackets

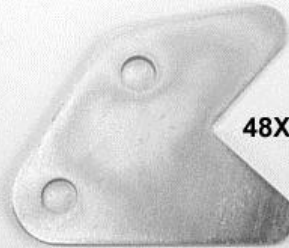


64W-L (2ea)



64W-R (2ea)

Rear Lift Bracket



48X (4ea)

Logo Plate (1ea) 10Y



1/4" Lock
Nut (2ea)
SNLN14



1/4" x 3/4"
Bolt (2ea)
SBSH143



1/4" Washer
(2ea)
SFW14



10mm x 70mm Bolt
(4ea) MCS1070



10mm x 65mm Bolt
(4ea) MCS1065



10mm Lock Nut
(8ea) MLN10-1.5



Large Spacer
(4ea) 4Y



Small Spacer
(4ea) AA



10mm Washer
(8ea) MFW10



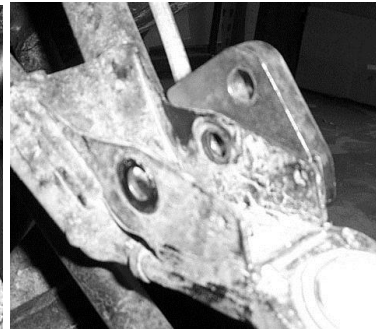
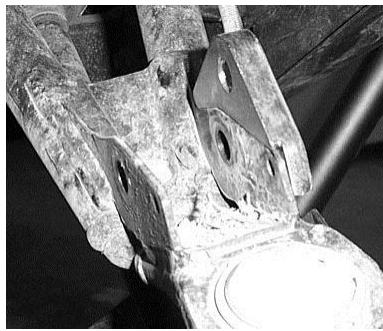
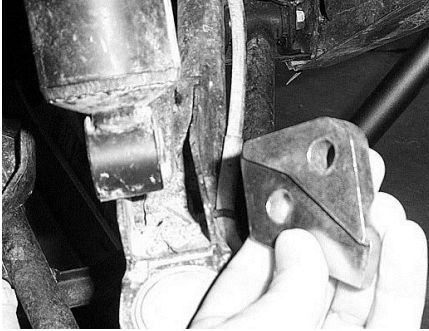
NOTE: Illustrated installation images may differ slightly from final bracket design.

Front Lift Installation

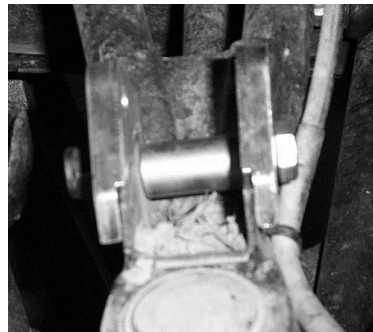
- 1) Place ATV transmission in park. Place jack under center of RUV front end and lift until front wheels clear the ground. Be careful to support ATV properly so that it is securely supported so that A-arms and shocks can droop to full extension.
- 2) Remove front wheels.
- 3) Disconnect the bottom of the front shock from the control arm.



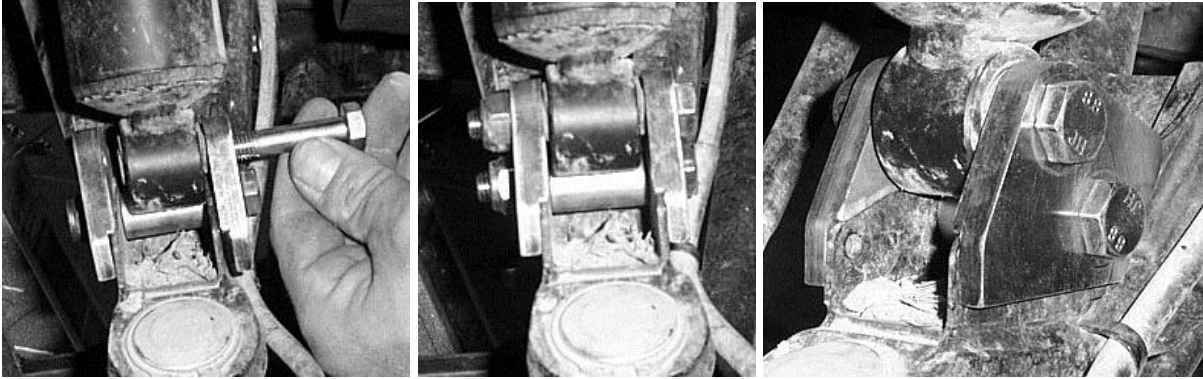
- 4) Locate (1ea) Left Front Bracket and (1ea) Right Front Bracket. Starting with the right place it on the shock mount tab.



- 5) Place (1ea) Large Spacer between the shock mounting tabs and insert (1ea) 10x65mm bolt through the bracket and spacer. Next place (1ea) Left Front Bracket on the shock mount tab securing it with a 10mm Lock Nut.



- 6) Connect the shock to the lift brackets using (1ea) 10x65mm Bolt and (1ea) 10mm Lock Nut.



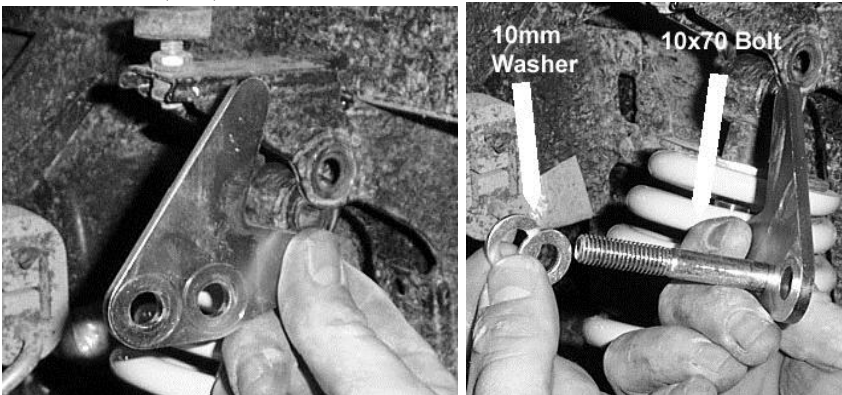
- 7) Repeat these steps for opposite side.
8) Place wheels back onto ATV and lower jack.
9) Make sure all lugs are torque to factory specifications.

Rear Lift Installation

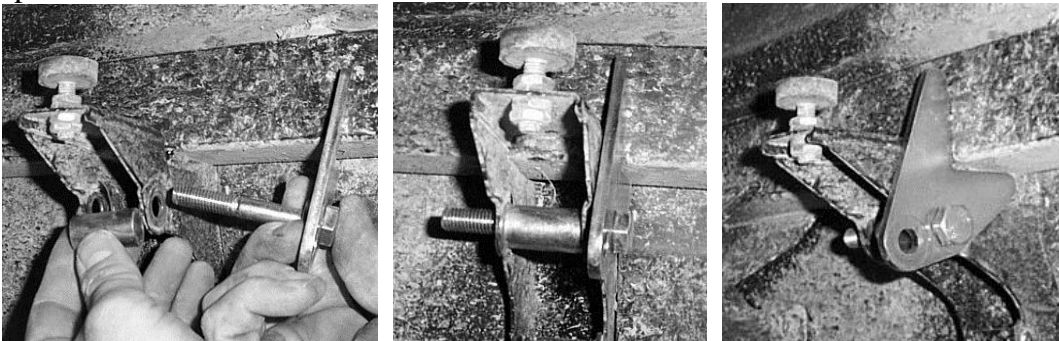
1. Place ATV transmission in park. Place jack under center of RUV rear end and lift until rear wheels clear the ground. Be careful to support RUV properly so that it is securely supported so that the suspension can droop to full extension.
2. Remove top of the rear shock.



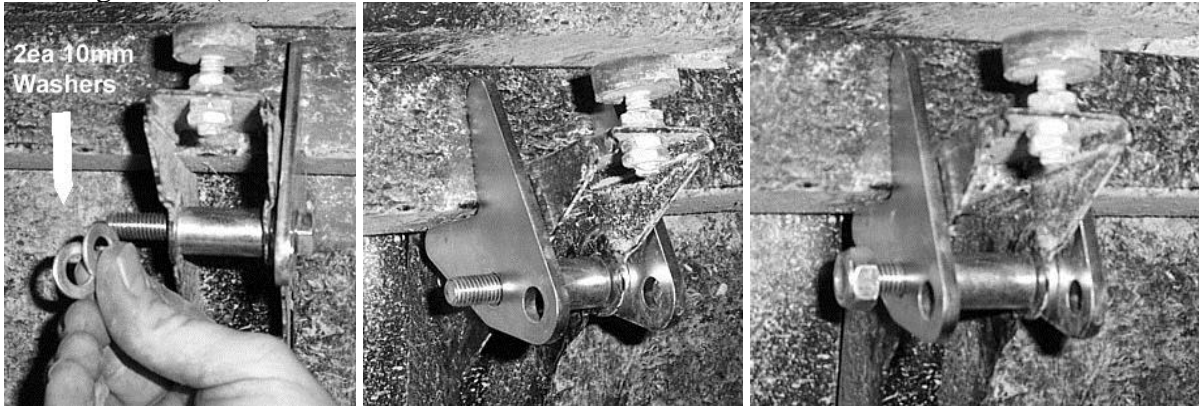
3. Connect (1ea) Rear Lift Bracket to the shock mount buy placing (1ea) 10x70mm bolt through the bracket and (2ea) 10mm washers on the end of the bolt between the bracket and shock mount tab.



4. Insert (1ea) Large Spacer between the shock mount tabs. Then, insert the bolt through the tab and spacer.



- Place (2ea) washer on the end of the bolt and connect (1ea) Rear Lift Bracket to the shock mount tab securing it with (1ea) 10mm Lock Nut.



- Next, insert (1ea) 10x70mm bolt through the bracket placing (1ea) small spacer on the bolt between the bracket and the shock eye. Then insert the top of the shock between the lift brackets. Then insert (1ea) Small Spacer between the shock and the lift bracket.



- Secure the brackets with (1ea) 10mm Lock Nut.
- Repeat steps for opposite side.
- If you removed your rear factory wheels place them back on the RUV and torque to factory specifications.

High Lifter Logo Plate Installations

1. Locate a spot for the plate. We choose the tailgate.



2. Place the plate in the position you want it then mark the holes.



3. Next, drill the holes.
4. Fasten plate with 1/4 x 3 1/4 stainless button head bolts (2ea), 1/4 stainless washers (2ea), and 1/4 lock nuts (2ea).





High Lifter Lifetime Warranty

From the beginning, High Lifter has engineered and manufactured some of the toughest, most durable products on the market. That's why this product comes with a Lifetime Warranty. It's our promise that High Lifter will never let you down.

- The **Lifetime Warranty** covers products sold to the original purchaser only and is not transferable. The term of the warranty is for the lifetime of the vehicle in question.
- Normal wear and tear items and finishes, such as, but not limited to: Heim joints, tie rod ends, ball joints, bearings, seals, bushings, bushing sleeves, zinc plating, powder coating, or chipping and discoloration of any finish is not covered.
- High Lifter will ship the replacement product after the returned product has been inspected by High Lifter staff.
- The warranty shall not include claims for damages, installation time or labor charges, economic losses, inconvenience, transportation, towing, down time, direct or indirect or consequential damages or delay resulting from any defect.
- The warranty does not apply to products that have been improperly applied or improperly installed.