



Kawasaki Teryx 4-Seater

Read before Installation

This product is designed for use on ATVs and/or RUVs to increase ground clearance and fender clearance. Purchasers should be aware that use of this product may increase the frequency of required maintenance, part wear, and will raise the center of gravity on your ATV and/or RUV, increasing risk of roll-over, injury and death on all types of terrain. It is your responsibility to always inform other operators and passengers of this vehicle about the added risks.

High Lifter Products, products are designed to best fit users ATV/RUV under stock conditions. Adding, modifying, or fabricating any OEM or aftermarket parts will void warranty. High Lifter Products, products could interfere with other aftermarket accessories. If the user has aftermarket products on machine, contact High Lifter Products to verify that they will work together. Adding aftermarket suspension components and/or more aggressive tires can cause breakage of other OEM driveline components such as differentials, axles or drive shafts.

We recommend that wider tires and/or wheel spacers be used to achieve a wider stance and to improve stability of the ATV and/or RUV. Riders should be advised that the handling characteristics of a taller ATV and/or RUV are different and require extra care when riding, particularly on side hills or off-camber situations. If you further raise the center of gravity by adding taller tires, heavy loads to racks or seats, or by any other means, the ATV and/or RUV must be operated with even more care, at slower speeds and on relatively flat ground. All turns should be done at a slow speed, even on level ground.

Operation of an ATV and/or RUV with or without modified suspension components, while or shortly after consuming alcohol or drugs, subjects the rider to the risk of serious bodily harm or possible death. This risk is compounded if the rider does not wear an approved helmet and other safety gear. High Lifter urges that all approved safety gear be worn when riding an ATV and/or RUV as a driver or passenger.

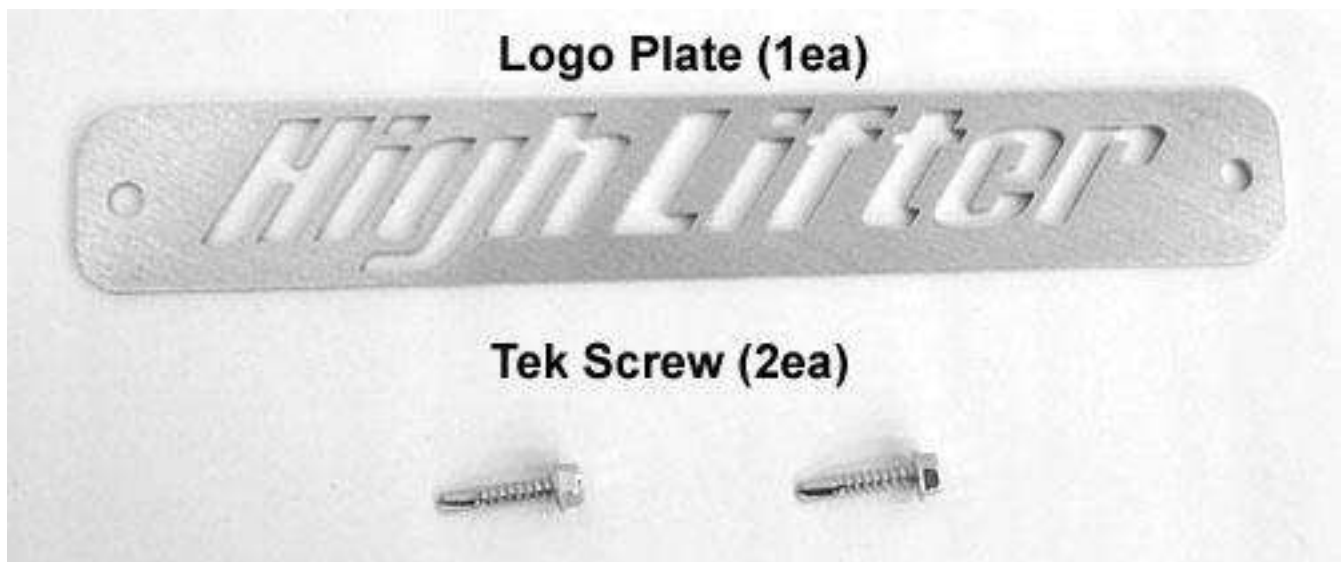
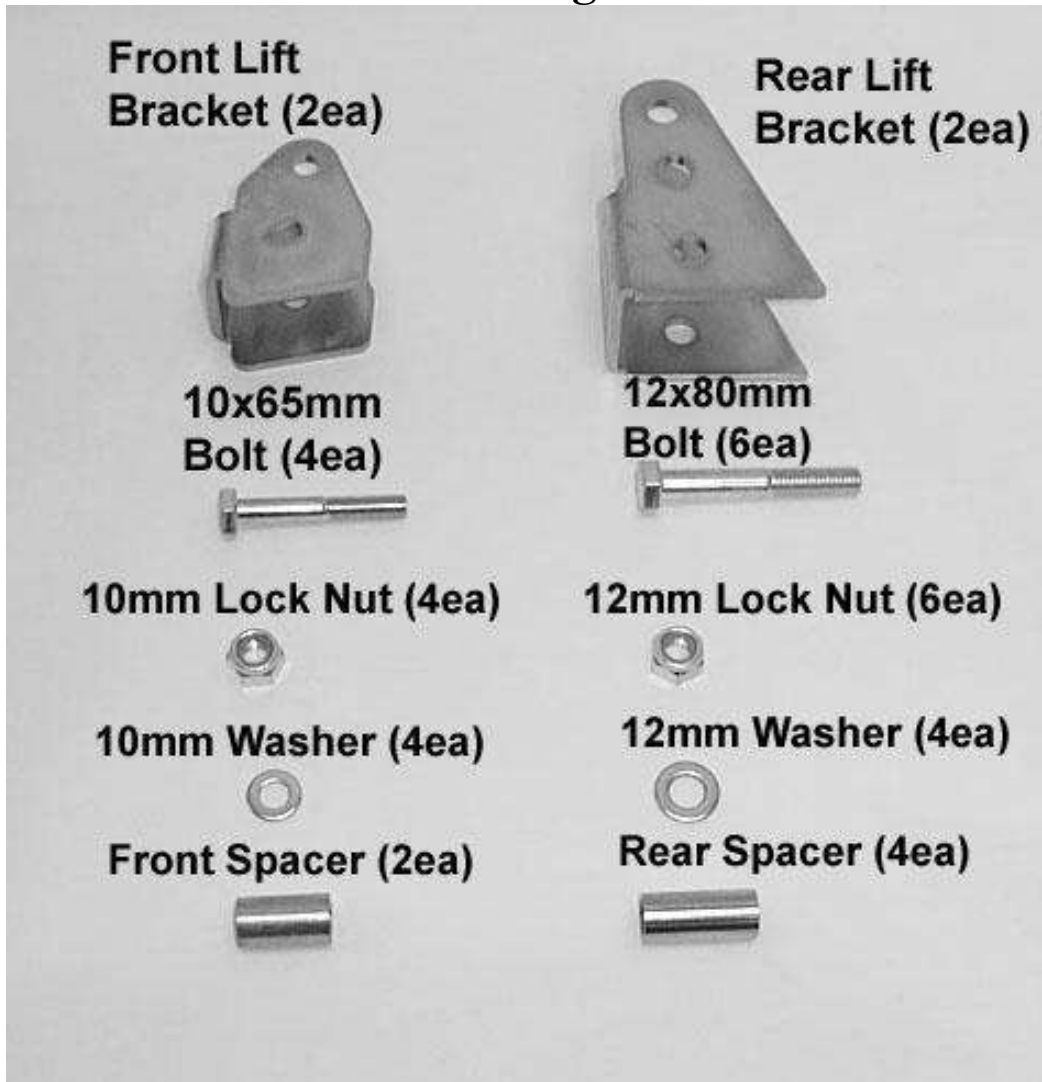
By purchasing and installing High Lifter Products, products, user agrees that should damages occur, High Lifter Products will not be held responsible for loss of time, use, labor fees, replacement parts, or freight charges. High Lifter Products will not be held responsible for any direct, indirect, incidental, special, or consequential damages that result from any product purchased from High Lifter Products. The total liability of seller to user for all damages, losses, and causes of action, shall not exceed the total purchase price paid for the product that gives rise to the claim.

Dealers and other Installers

You are responsible for informing your customer and end user of the information contained above and the increased potential hazards of operating an ATV and/or RUV equipped with modified suspension components. If you install any suspension modifying components, it is your responsibility to also install the warning label prominently in view of the driver and in prominent view of the driver and passenger on RUVs and multi-passenger ATVs. They should also be instructed to notify anyone operating the vehicle, as well as any passengers, that said vehicle is modified.

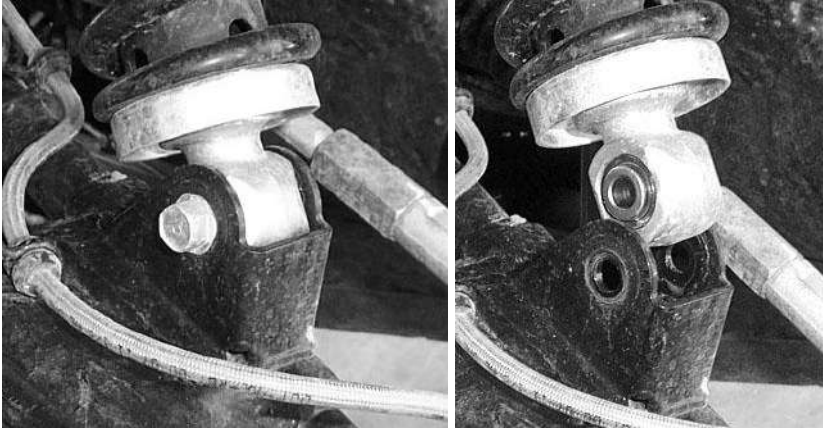
As discussed above, it is critically important that they be instructed in the need for slower speed operation, regardless of terrain, after this lift kit is installed.

Parts Diagram

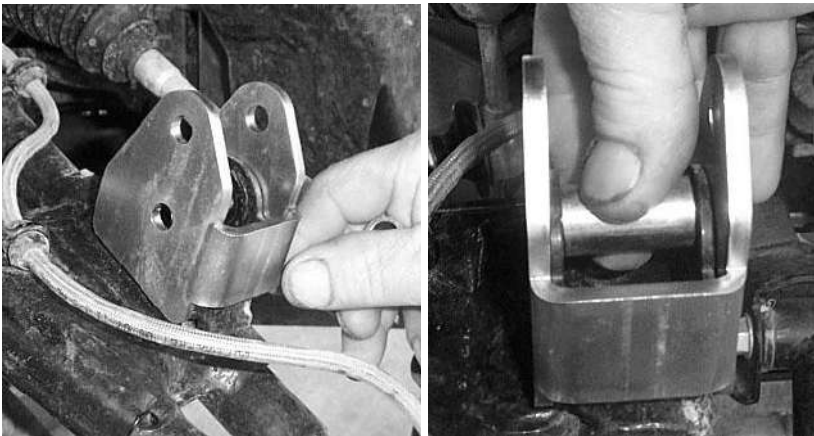


Front Lift Installation

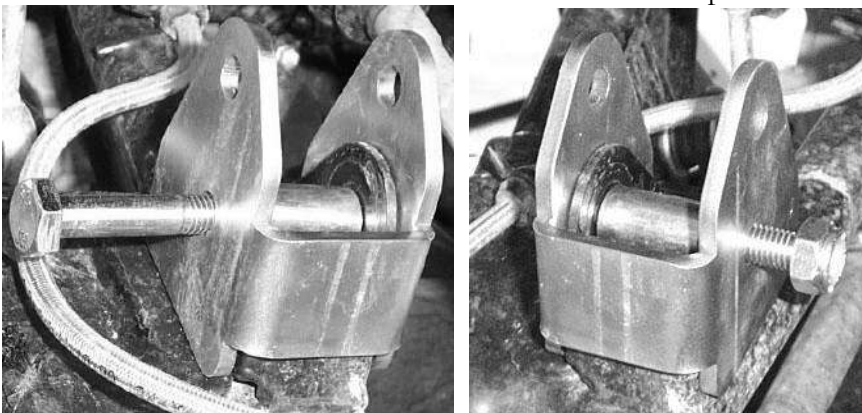
- 1) Place jack under center of UTV front end and lift until front wheels clear the ground. Be careful to support the UTV properly so that it is securely supported but so that A-arms and shocks can droop to full extension.
- 2) Remove front wheels and lower portion of shock from the A-arm.



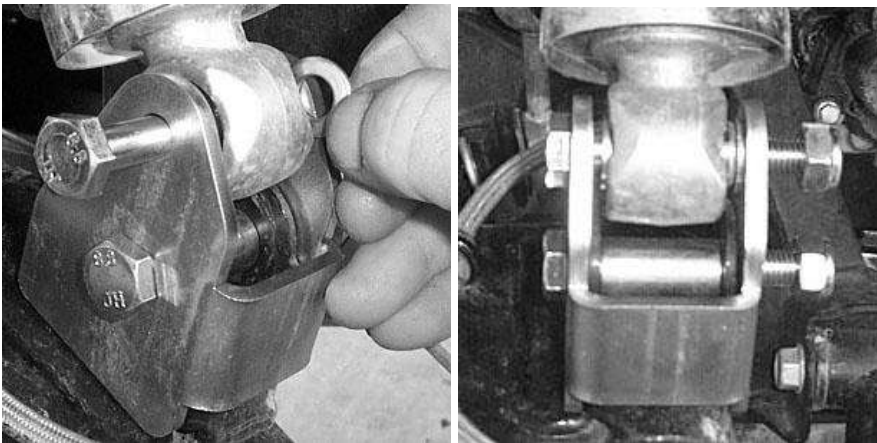
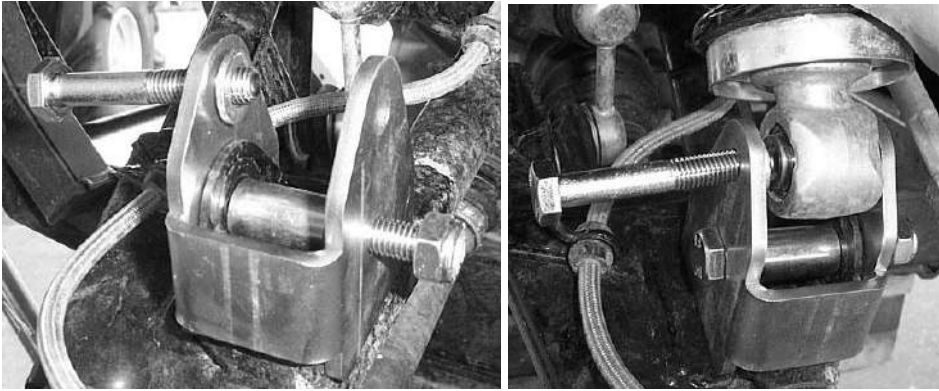
- 3) Slide bottom of lift bracket over A-arm shock mount and insert one medium spacer between the center of the shock mount tabs and front lift bracket.



- 4) Now insert the 10 x 65 hex bolt and secure the bracket and spacer to the frame with the 10mm Locknut.



- 5) Slide bottom of the shock into top of the lift bracket. Using the 10x65mm bolt and 10mm flat washer, insert the 10mm flat washers between the shock eyelet and the bracket. Fasten tight using a 10mm lock nut.



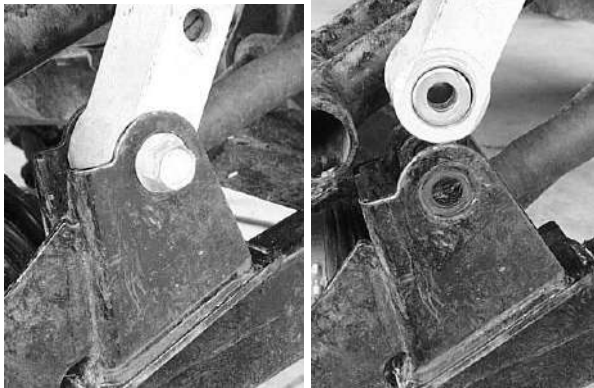
- 6) Repeat the procedure for the other side.



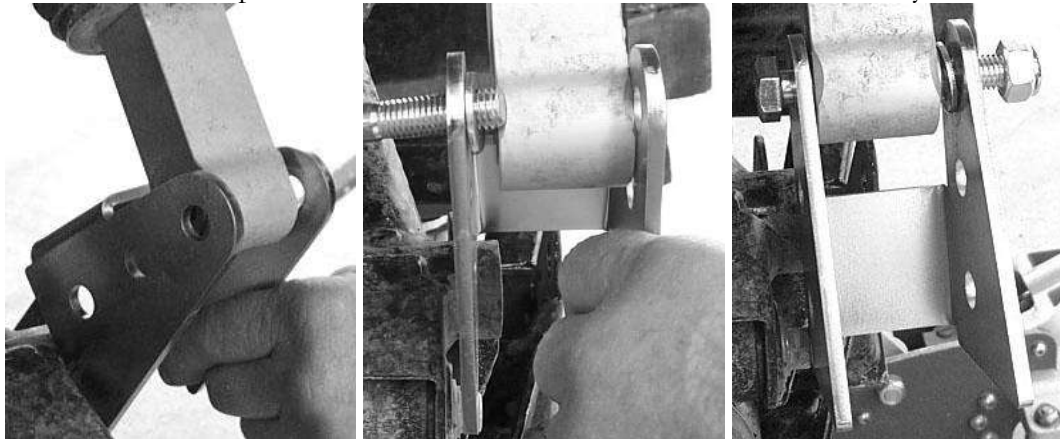
- 7) Install the wheels, torque wheel lug nuts to manufacturer's specifications, lower and remove jack. **Check for clearance problems or misalignment.**

Rear Lift

- 1) Place jack under UTV at the rear of the bottom skid plate and lift until the weight is off of the suspension. Be careful to secure the UTV properly so as not to fall off the jack.
- 2) Remove the rear wheels.
- 3) Disconnect the lower part of the shock from the control arm.

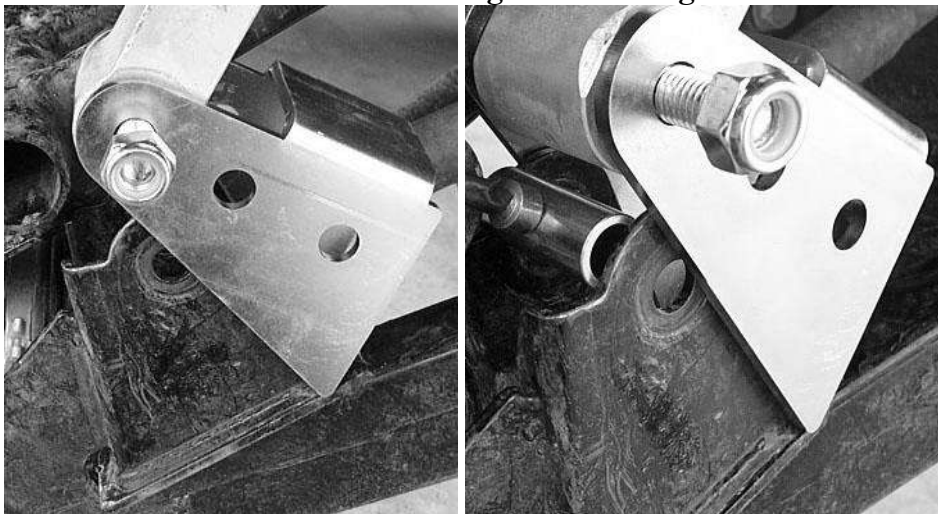


- 4) Attach the top of the rear lift bracket to the lower shock eyelet using the 12x80mm bolt and 12mm lock nut. Make sure to place a 12mm flat washer on either side of the shock eyelet.

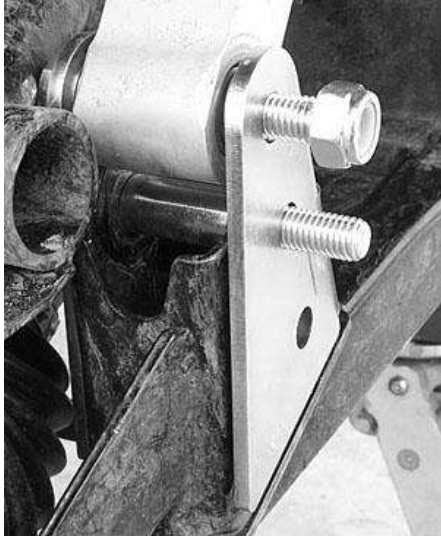


- 5) Connect the rear lift bracket to the shock mount. Insert the rear spacer between the shock mount tabs where the shock was previously mounted to the shock mount tabs.

Installation Hint: Have the bracket go on at an angle!

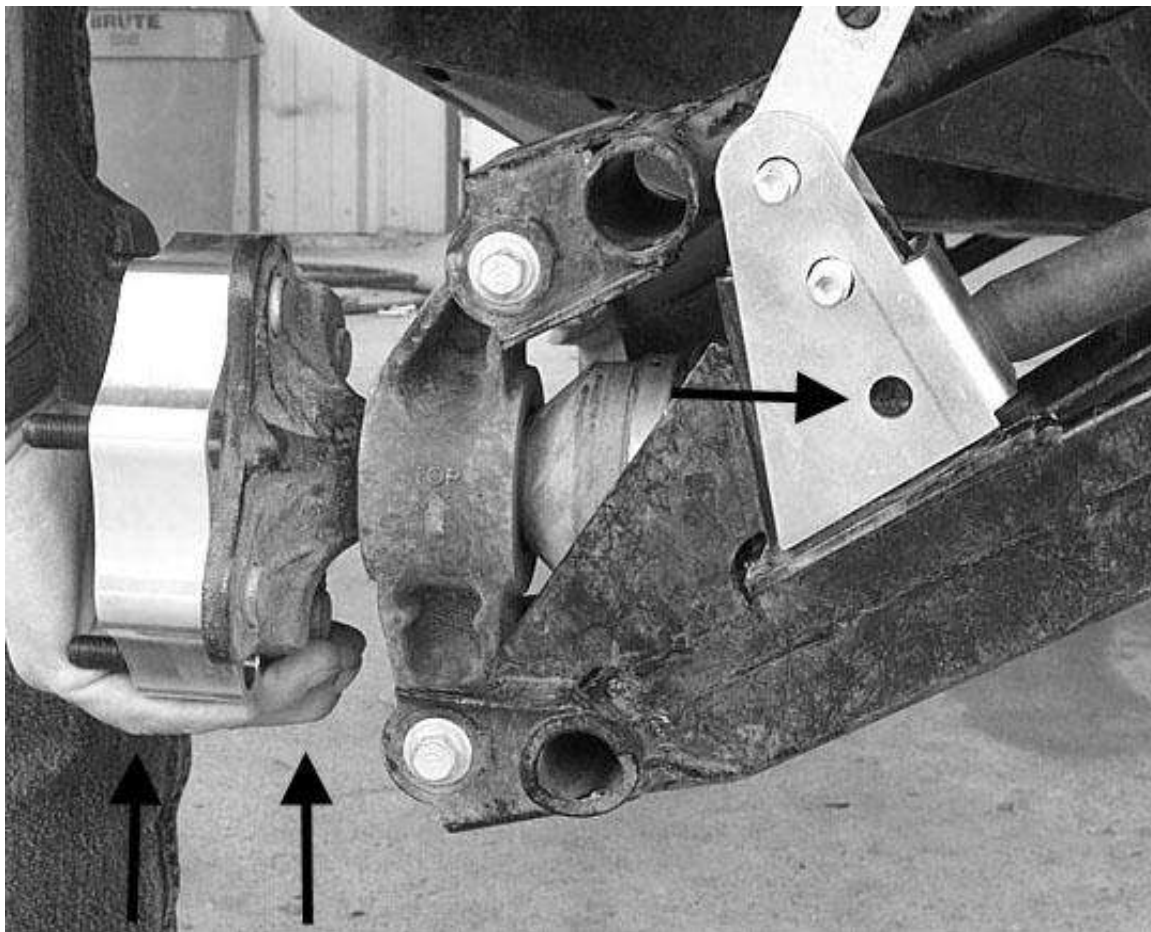


- 6) Next insert the 12x80mm bolt to hold the spacer and bracket in place and loosely attach the 12mm nut.

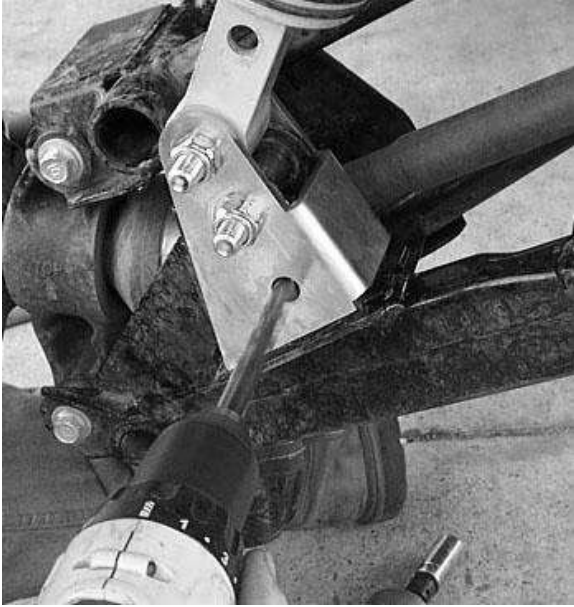


- 7) **THIS NEXT STEP IS VERY IMPORTANT!!!!!!**

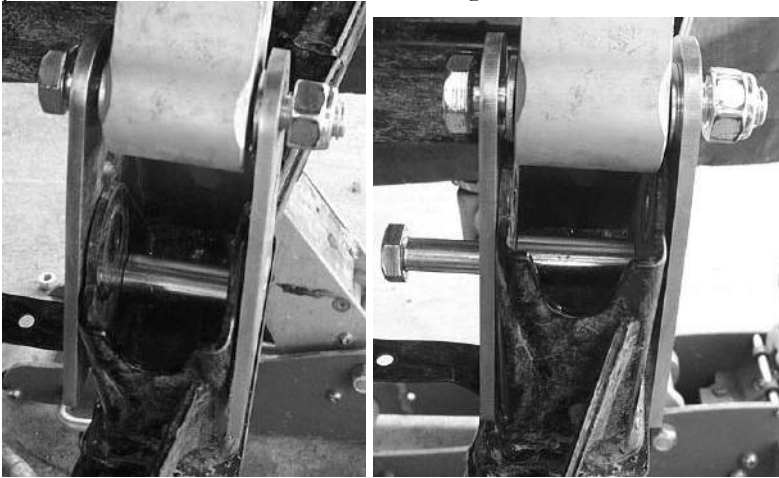
- 8) Lift the hub assembly up making sure that there is no slack. You will mark the bolt holes that will need to be drilled. If you do not mark these properly, the outer boot on the CV axle that is nearest the hub will rub the control arm. When you complete the lift install you will need to check the clearances of the boots on the inner and outer joints.



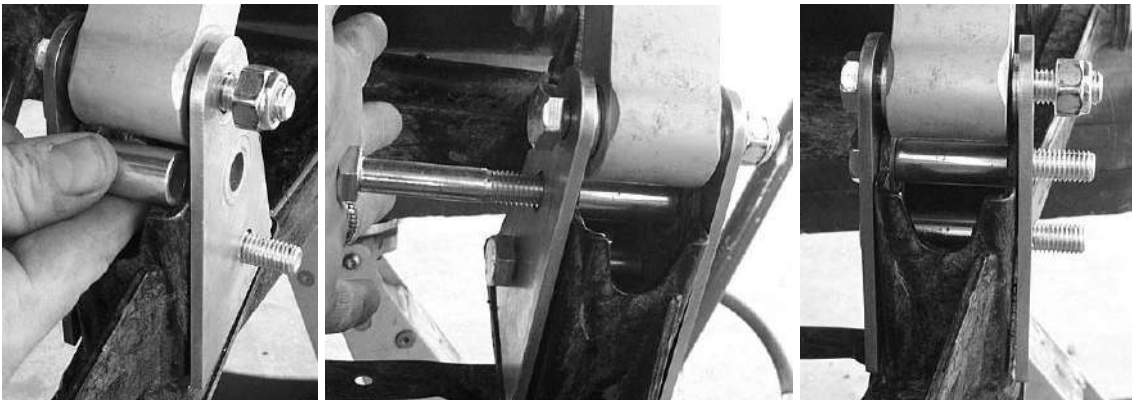
- 9) Drill the holes on the marked areas. We used the bracket as a guide.



- 10) Once you have drilled the holes leave the bottom of the shock attached to the bracket, but remove the spacer and 12x80mm bolt you have between the shock mount tabs.
- 11) Now to attach the bottom of the lift bracket to the control arm by placing a rear spacer between the holes you drilled. Connect the bracket using a 12x80mm bolt and 12mm lock nut.

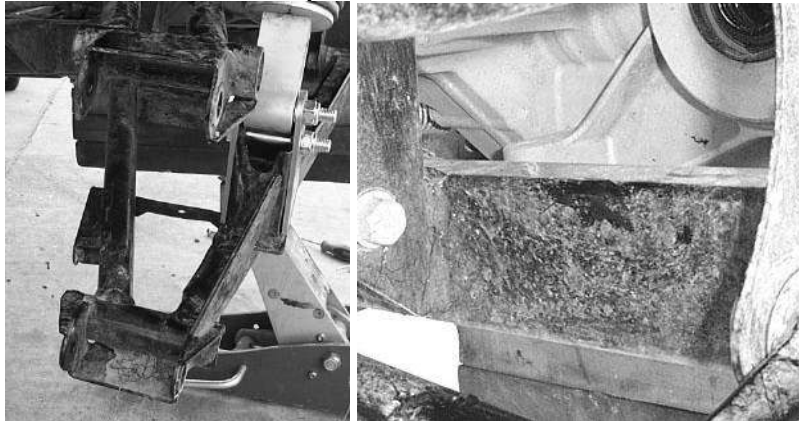


- 12) Now reinsert the rear spacer between the shock mount tabs and connect it using a 12x80mm bolt and 12mm lock nut.



13) **THE NEXT STEPS ARE FOR CLEARANCE PROBLEMS. WHEN THE LIFT IS INSTALLED AND WITH THE TERYX JACKED UP IN THE REAR WITH THE ARMS AT FULL EXTENSION CHECK TO SEE IF THE AXLES OR CV BOOTS ARE RUBBING THE FRAME. IF THEY ARE RUBBING YOU NEED TO DO THE NEXT STEPS. IF THEY ARE NOT THEN DISREGARD STEPS 14 THRU 17.**

14) Next disconnect the hub assembly from the UTV and remove the axle. You will need to notch the frame near the rear differential to ensure clearance of the CV axle when the control arms are at full extension. The axle bars will rub if you do not notch the frame.



15) Mark the area that needs to be notched and then trim it. (Make sure to do both sides.)



16) Once you have notched the frame make sure to apply a light coat of paint to ensure that it does not rust.

17) Reattach the axle and hub assembly to the UTV.

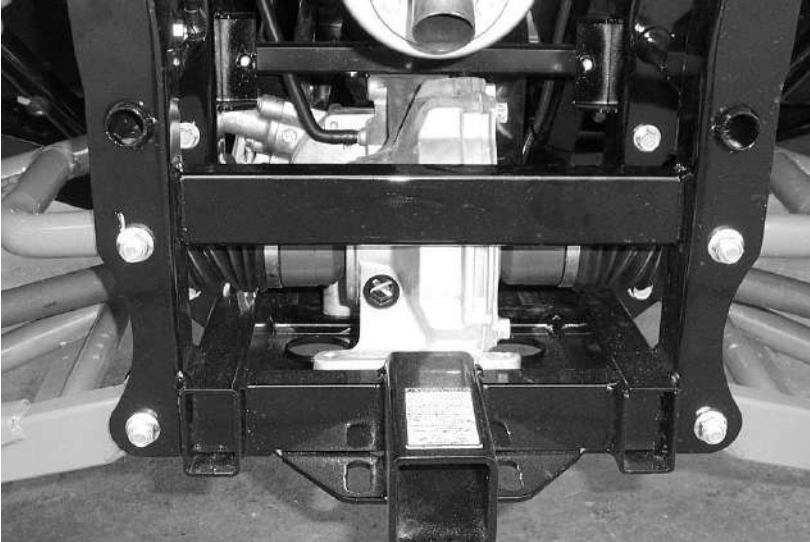


18) Repeat steps for opposite side.

19) Install the wheels, torque wheel lug nuts to manufacturer's specifications, lower and remove jack. Check for clearance problems or misalignment.

High Lifter Logo Plate Installation

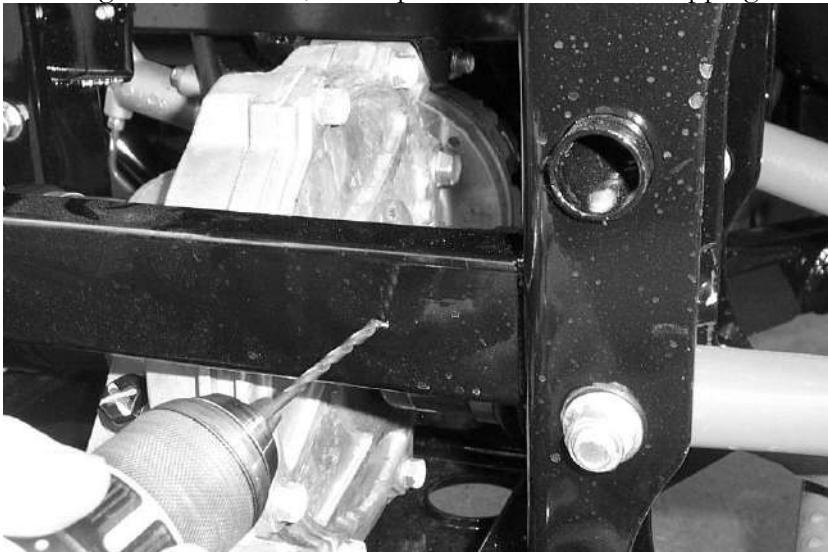
1. Install the new logo plate to the rear of the UTV near the differential on the frame.



2. Place the logo plate on the frame and mark the hole location for the bracket.



3. Using a small drill bit, drill a pilot hole for the self tapping screws.



4. Once you have drill the pilot holes, place the logo plate back on the frame and secure it using the two tech screws provided in the kit.



Thank You
For choosing

High Lifter
PRODUCTS



High Lifter Lifetime Warranty

From the beginning, High Lifter has engineered and manufactured some of the toughest, most durable products on the market. That's why this product comes with a Lifetime Warranty. It's our promise that High Lifter will never let you down.

- The **Lifetime Warranty** covers products sold to the original purchaser only and is not transferable. The term of the warranty is for the lifetime of the vehicle in question.
- Normal wear and tear items and finishes, such as, but not limited to: Heim joints, tie rod ends, ball joints, bearings, seals, bushings, bushing sleeves, zinc plating , powder coating, or chipping and discoloration of any finish is not covered.
- High Lifter will ship the replacement product after the returned product has been inspected by High Lifter staff.
- The warranty shall not include claims for damages, installation time or labor charges, economic losses, inconvenience, transportation, towing, down time, direct or indirect or consequential damages or delay resulting from any defect.
- The warranty does not apply to products that have been improperly applied or improperly installed.