



Sportsman High Lifter Edition Lift Kit Installation Instructions

Read before Installation

This product is designed for use on ATVs and/or RUVs to increase ground clearance and fender clearance. Purchasers should be aware that use of this product may increase the frequency of required maintenance, part wear, and will raise the center of gravity on your ATV and/or RUV, increasing risk of roll-over, injury and death on all types of terrain. It is your responsibility to always inform other operators and passengers of this vehicle about the added risks.

High Lifter Products, products are designed to best fit users ATV/RUV under stock conditions. Adding, modifying, or fabricating any OEM or aftermarket parts will void warranty. High Lifter Products, products could interfere with other aftermarket accessories. If the user has aftermarket products on machine, contact High Lifter Products to verify that they will work together. Adding aftermarket suspension components and/or more aggressive tires can cause breakage of other OEM driveline components such as differentials, axles or drive shafts.

We recommend that wider tires and/or wheel spacers be used to achieve a wider stance and to improve stability of the ATV and/or RUV. Riders should be advised that the handling characteristics of a taller ATV and/or RUV are different and require extra care when riding, particularly on side hills or off-camber situations. If you further raise the center of gravity by adding taller tires, heavy loads to racks or seats, or by any other means, the ATV and/or RUV must be operated with even more care, at slower speeds and on relatively flat ground. All turns should be done at a slow speed, even on level ground.

Operation of an ATV and/or RUV with or without modified suspension components, while or shortly after consuming alcohol or drugs, subjects the rider to the risk of serious bodily harm or possible death. This risk is compounded if the rider does not wear an approved helmet and other safety gear. High Lifter urges that all approved safety gear be worn when riding an ATV and/or RUV as a driver or passenger.

By purchasing and installing High Lifter Products, products, user agrees that should damages occur, High Lifter Products will not be held responsible for loss of time, use, labor fees, replacement parts, or freight charges. High Lifter Products will not be held responsible for any direct, indirect, incidental, special, or consequential damages that result from any product purchased from High Lifter Products. The total liability of seller to user for all damages, losses, and causes of action, shall not exceed the total purchase price paid for the product that gives rise to the claim.

Dealers and other Installers

You are responsible for informing your customer and end user of the information contained above and the increased potential hazards of operating an ATV and/or RUV equipped with modified suspension components. If you install any suspension modifying components, it is your responsibility to also install the warning label prominently in view of the driver and in prominent view of the driver and passenger on RUVs and multi-passenger ATVs. They should also be instructed to notify anyone operating the vehicle, as well as any passengers, that said vehicle is modified.

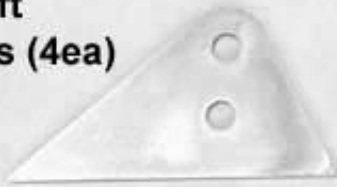
As discussed above, it is critically important that they be instructed in the need for slower speed operation, regardless of terrain, after this lift kit is installed.

Parts Diagram

Rear Lift Bracket (2ea) 55X



**Front Lift
Brackets (4ea)
53N**



**Large
Spacer (2ea)
6V**



**10mm Washer
(4ea) MFW10**



**Small
Space (2ea)
18T**



**10mm Lock
Nut MLN10-1.5
(8ea)**



**10mm x 70mm Bolt
(4ea) MCS1070**



**10mm x 60mm Bolt
(4ea) MCS1060**



18" Zip Tie (1ea) T18HDB



Front Lift

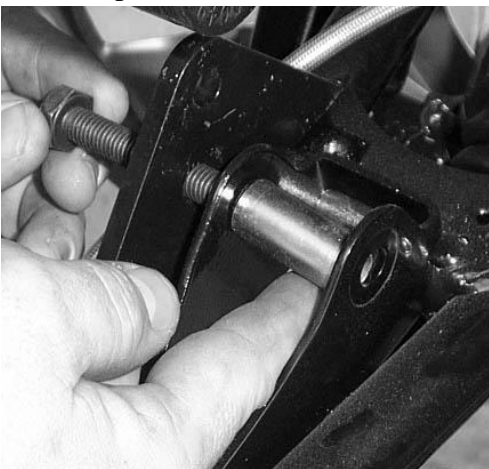
- 1) Place ATV transmission in park. Place jack under center of ATV front end and lift until front wheels clear the ground. Be careful to support ATV properly so that it is securely supported so that A-arms and shocks can droop to full extension.
- 2) **If you are running stock/factory wheels in the rear you must use a 1" spacer to get clearance of the factory snorkel. If you are running aftermarket wheels you do not need the spacers!**
- 3) Remove front wheels.
- 4) Remove the bottom of the front shocks from the shock mounts.



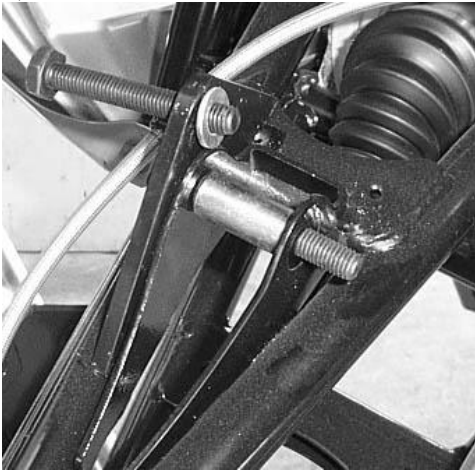
- 5) Insert the large spacer between the shock mounting tabs on the A-arm.



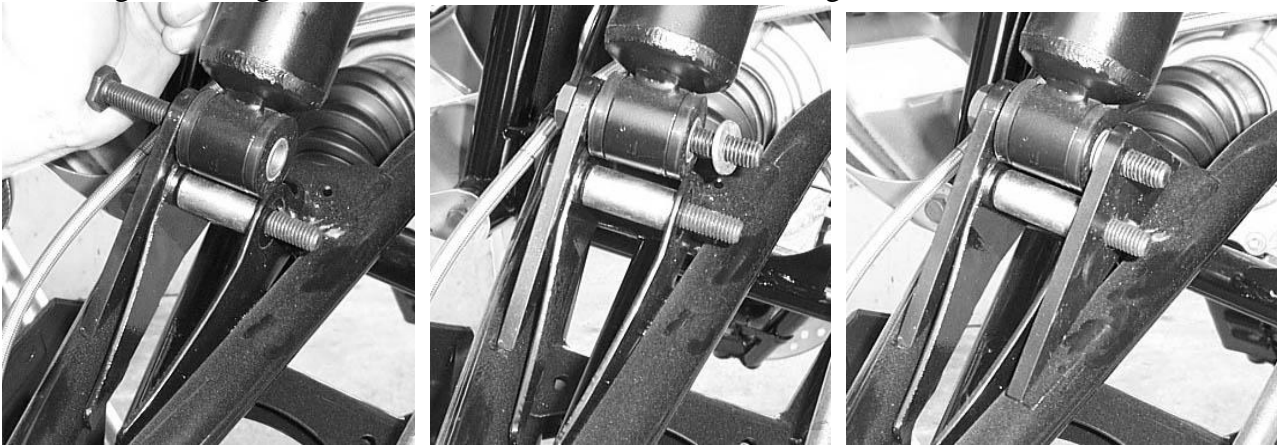
- 6) Connect the front lift mounting bracket to the A-arm by using a 10x70 bolt. Slide the bolt thru the bracket and spacer between the shock mount tabs.



7) Next insert a 10x70 bolt thru the top of the lift bracket, and then place a 10mm washer on the bolt.



8) Push the 10x70 bolt thru placing another 10mm washer on the opposite side of the shock eyelet. Connect it all together using another front lift bracket and 10mm locking nuts.



9) Repeat the steps for the opposite side.

10) Place wheels back on ATV and torque all lugs to factory specifications.

Rear Lift

- 1) Place jack under the center of the ATV, just forward of where the rear drive shaft connects to the engine, and lift until the weight is off the suspension. Be careful to secure the ATV properly so it is stable on the jack.
- 2) Remove the rear wheels.
- 3) Disconnect the top of the shock from both sides of the ATV.



- 4) Remove the rear top a-arms. (If you are running aftermarket axles with larger diameter cups and boots you must follow these steps)
- 5) Using a grinder trim the area nearest the axle.



- 6) Reattach the a-arms. (This photo shows the clearance)

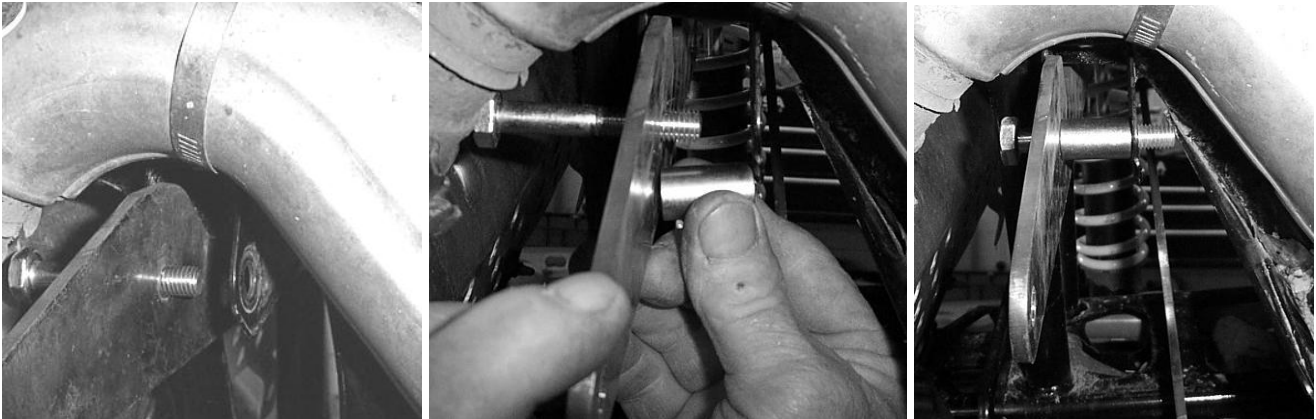


- 7) Insert one rear bracket into the frame, between the shock mount tabs.

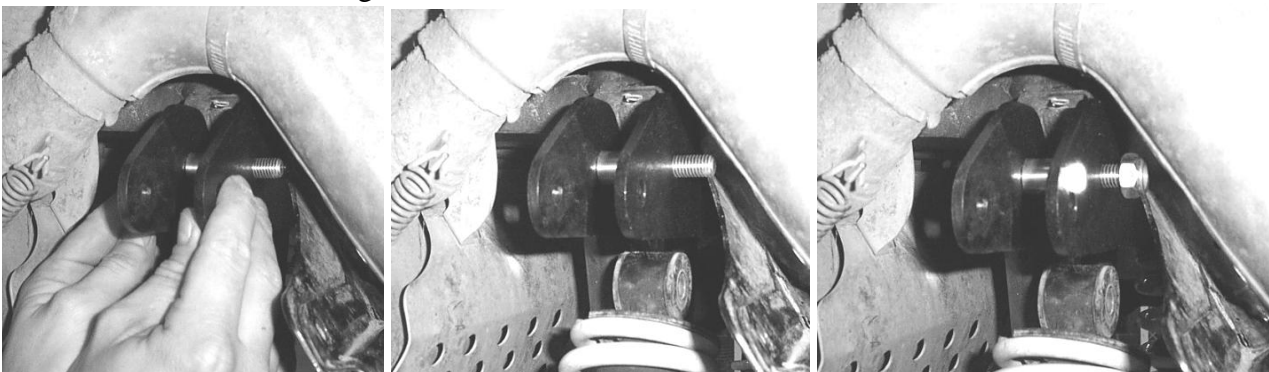
NOTE: For ease of installation, on the opposite side from where you are starting, insert a bolt through the shock mount tabs and the lift bracket. This will hold the bracket in place while you are working on the opposite side.



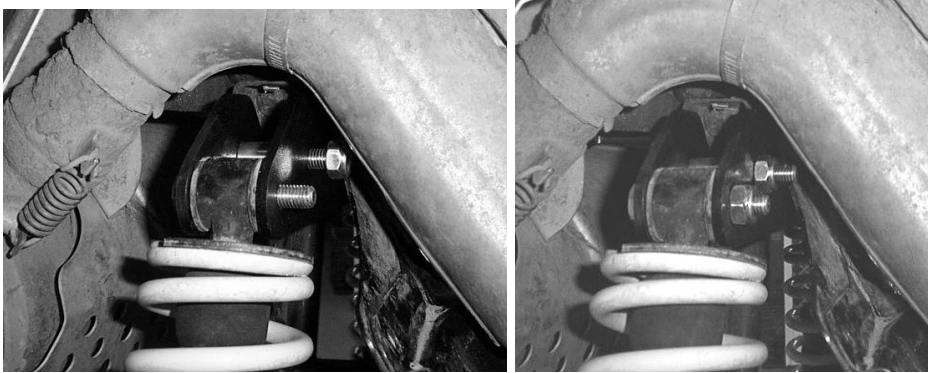
- 8) Insert the 10mm x 60mm bolt through the shock mount tab and bracket. Insert the small spacer between the bracket and shock mount tab. Insert the bolt all the way through. Make sure that the bracket is between the shock mount tabs and to the rear of the ATV.



- 9) Next insert the second rear lift bracket to the front of the shock tabs. Placing it on the bolt. Loosely secure the bracket to the ATV using a 10mm lock nut.

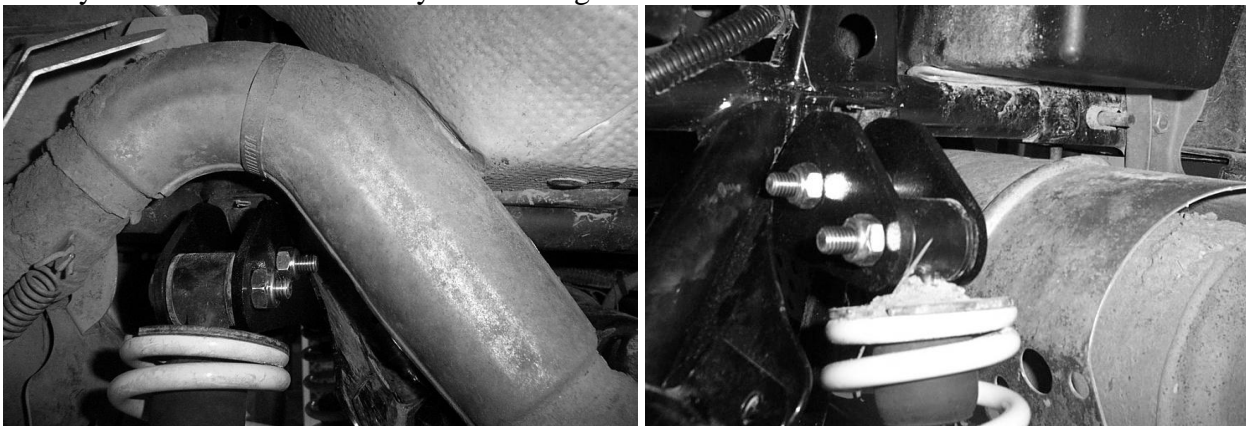


10) Now connect the top of the shock to the brackets. Insert the 10mm x 60mm bolt through the brackets and shock eyelet. Loosely secure it to the ATV with a 10mm lock nut.

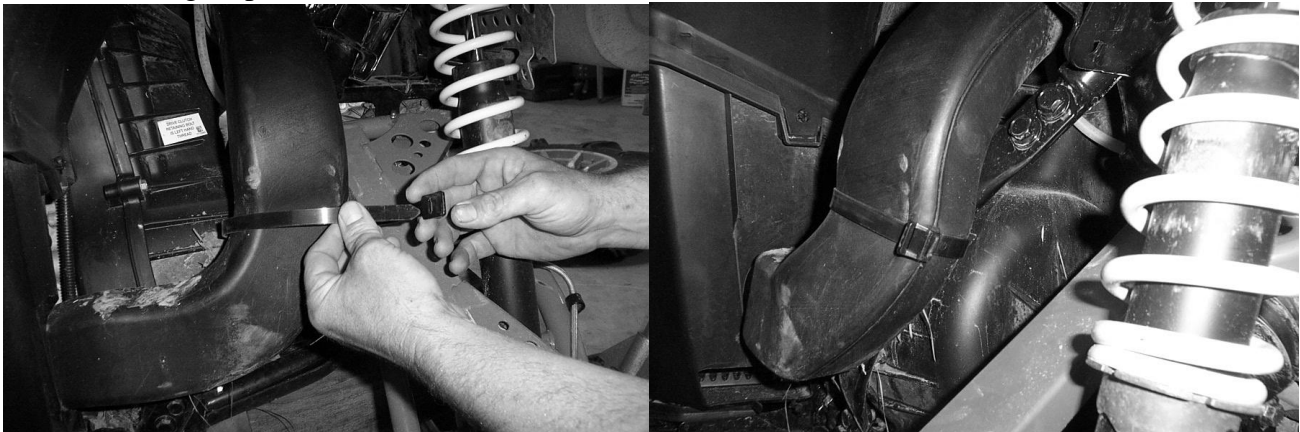


11) Repeat the steps for the opposite side.

12) Once you have both sides loosely installed tighten all hardware.



13) The snorkel duct will come into contact with larger tires if you do not secure it to the frame. Included in this kit is a large zip tie. Use it to secure the duct to the frame.



14) Place the wheels back on the ATV. Torque all lugs to factory specifications and lower the jack.



High Lifter Lifetime Warranty

From the beginning, High Lifter has engineered and manufactured some of the toughest, most durable products on the market. That's why this product comes with a Lifetime Warranty. It's our promise that High Lifter will never let you down.

- The **Lifetime Warranty** covers products sold to the original purchaser only and is not transferable. The term of the warranty is for the lifetime of the vehicle in question.
- Normal wear and tear items and finishes, such as, but not limited to: Heim joints, tie rod ends, ball joints, bearings, seals, bushings, bushing sleeves, zinc plating, powder coating, or chipping and discoloration of any finish is not covered.
- High Lifter will ship the replacement product after the returned product has been inspected by High Lifter staff.
- The warranty shall not include claims for damages, installation time or labor charges, economic losses, inconvenience, transportation, towing, down time, direct or indirect or consequential damages or delay resulting from any defect.
- The warranty does not apply to products that have been improperly applied or improperly installed.