



Polaris RZR 570 Lift Kit Installation Instructions

Read before Installation

This product is designed for use on ATVs and/or RUVs to increase ground clearance and fender clearance. Purchasers should be aware that use of this product may increase the frequency of required maintenance, part wear, and will raise the center of gravity on your ATV and/or RUV, increasing risk of roll-over, injury and death on all types of terrain. It is your responsibility to always inform other operators and passengers of this vehicle about the added risks.

High Lifter Products, products are designed to best fit users ATV/RUV under stock conditions. Adding, modifying, or fabricating any OEM or aftermarket parts will void warranty. High Lifter Products, products could interfere with other aftermarket accessories. If the user has aftermarket products on machine, contact High Lifter Products to verify that they will work together. Adding aftermarket suspension components and/or more aggressive tires can cause breakage of other OEM driveline components such as differentials, axles or drive shafts.

We recommend that wider tires and/or wheel spacers be used to achieve a wider stance and to improve stability of the ATV and/or RUV. Riders should be advised that the handling characteristics of a taller ATV and/or RUV are different and require extra care when riding, particularly on side hills or off-camber situations. If you further raise the center of gravity by adding taller tires, heavy loads to racks or seats, or by any other means, the ATV and/or RUV must be operated with even more care, at slower speeds and on relatively flat ground. All turns should be done at a slow speed, even on level ground.

Operation of an ATV and/or RUV with or without modified suspension components, while or shortly after consuming alcohol or drugs, subjects the rider to the risk of serious bodily harm or possible death. This risk is compounded if the rider does not wear an approved helmet and other safety gear. High Lifter urges that all approved safety gear be worn when riding an ATV and/or RUV as a driver or passenger.

By purchasing and installing High Lifter Products, products, user agrees that should damages occur, High Lifter Products will not be held responsible for loss of time, use, labor fees, replacement parts, or freight charges. High Lifter Products will not be held responsible for any direct, indirect, incidental, special, or consequential damages that result from any product purchased from High Lifter Products. The total liability of seller to user for all damages, losses, and causes of action, shall not exceed the total purchase price paid for the product that gives rise to the claim.

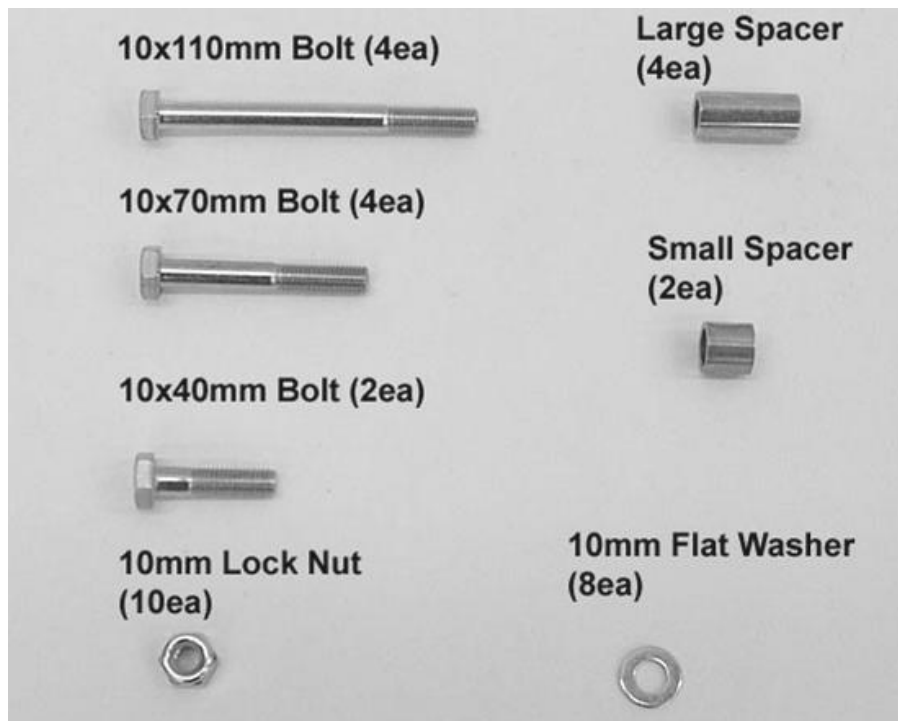
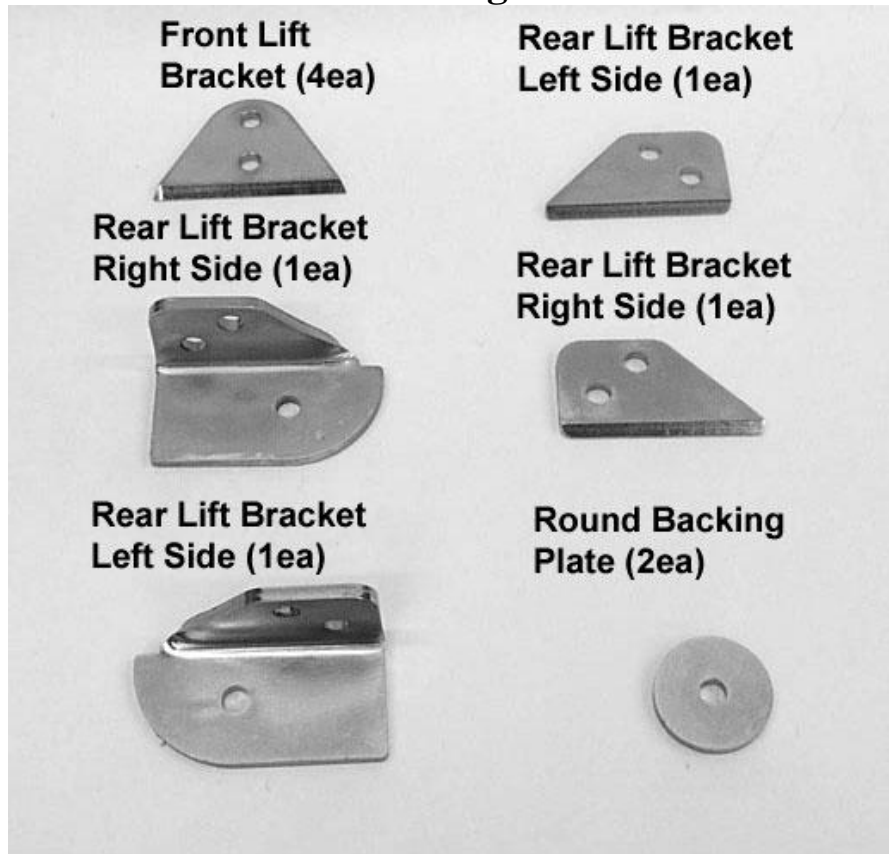
If this product is not what you expected, or is not consistent with your intended use, you should return the product immediately to the seller, before installation, for a refund of the purchase price; less any fees. After installation, product is warranted for 90 days for defects in workmanship and materials. High Lifter Products will warranty only parts provided by High Lifter Products. Any damage or problems with OEM housings, bearings, seals, or other manufacturer's products will not be covered by High Lifter Products. Parts and products will not be warranted if item was not installed properly, misused, or modified.

Dealers and other Installers

You are responsible for informing your customer and end user of the information contained above and the increased potential hazards of operating an ATV and/or RUV equipped with modified suspension components. If you install any suspension modifying components, it is your responsibility to also install the warning label prominently in view of the driver and in prominent view of the driver and passenger on RUVs and multi-passenger ATVs. They should also be instructed to notify anyone operating the vehicle, as well as any passengers, that said vehicle is modified.

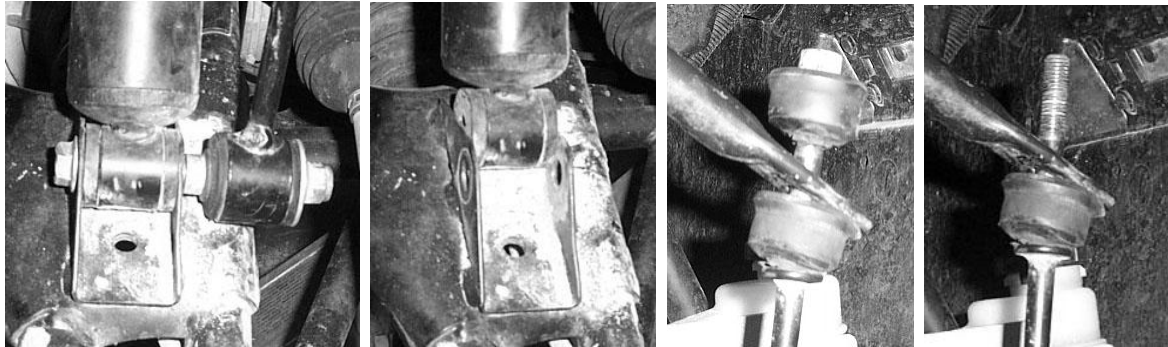
As discussed above, it is critically important that they be instructed in the need for slower speed operation, regardless of terrain, after this lift kit is installed.

Parts Diagram



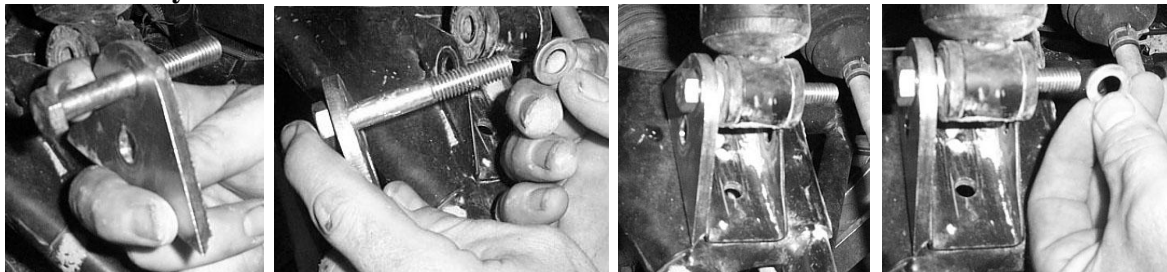
Front Lift Installation

- 1) Place ATV transmission in park. Place jack under center of UTV front end and lift until front wheels clear the ground. Be careful to support UTV properly so that it is securely supported so that A-arms and shocks can droop to full extension.
- 2) Remove front wheels.
- 3) Remove the bottom of the front shocks, stabilizer rod, and small spacer.

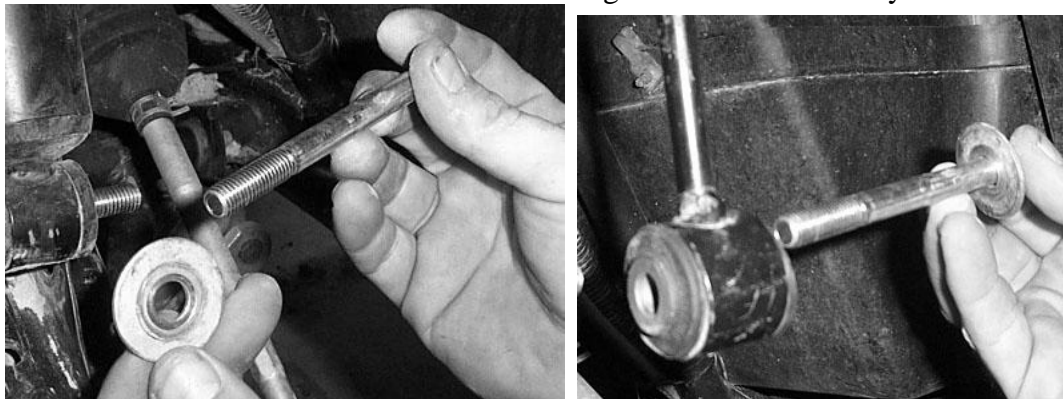


- 4) Place the front lift brackets onto the front shock mount. Start with the side of the shock that is towards the front of the RZR. Insert the 10x70mm Hex bolt through the top hole on the lift bracket. Place a 10mm washer onto the bolt, then insert the bolt through the lower shock eyelet. Place another 10mm washer on the bolt once you push it through the eyelet.

NOTE: Make note of the angle on the bottom of the brackets. The angle helps to clearance any welds on shock mount tabs.



- 5) Get the 10x110mm bolt and insert it through the large factory washer that was on the outside of the stabilizer link. Next insert the bolt through the stabilizer link eyelet.



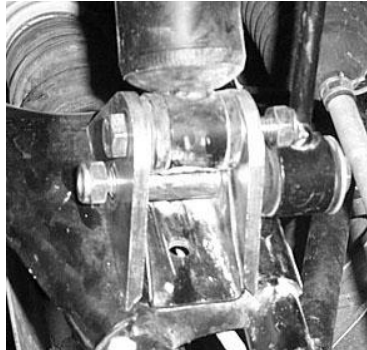
- 6) Next place the factory spacer next to the stabilizer link.



- 7) Insert the 10x110mm bolt through the bottom hole on the lift bracket.



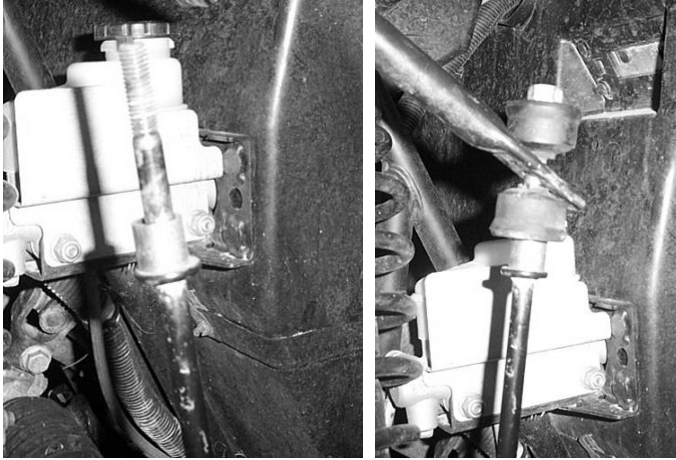
- 8) Insert the Large Spacer between the shock mount tabs and insert the 10x110mm bolt through the shock mount tabs and spacer. Fasten brackets and both bolts with the 10mm lock nuts.



- 9) If you have not done so already, disconnect the top of the stabilizer rod from the stabilizer bar. Remove both rubber bumpers.



10) Now place the Small Spacer onto the rod and place the rubber bumper back on the rod and connect the stabilizer bar to the stabilizer rod.

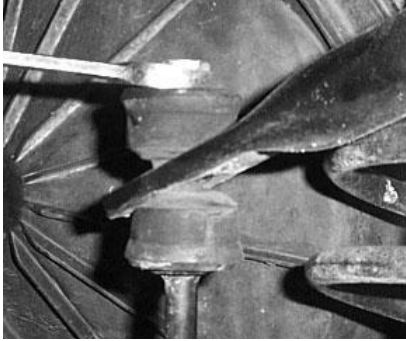


11) Repeat steps for opposite side.

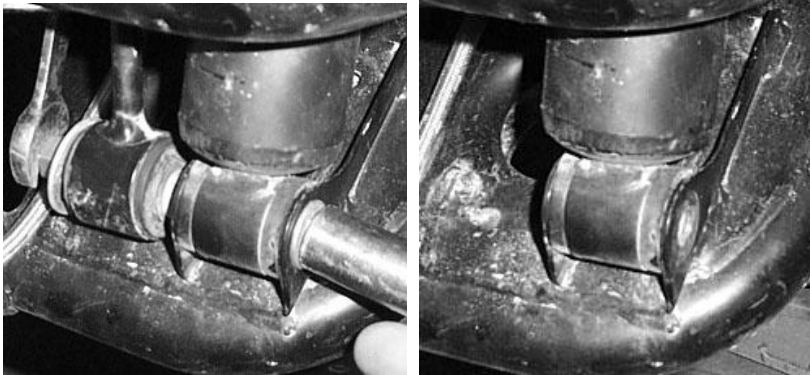
12) Lower the jack and place the wheels back on the UTV.

Rear Lift Installation

- 1) Place jack under UTV at the rear of the bottom skid plate and lift until the weight is off the suspension. Be careful to secure the UTV properly so as not to fall off the jack.
- 2) Remove the wheels.
- 3) Disconnect the sway bar from the top of the sway bar rods on both sides.



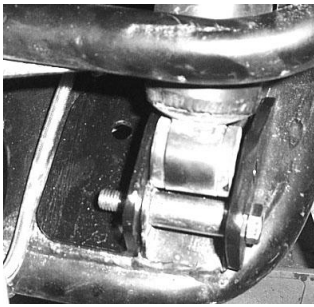
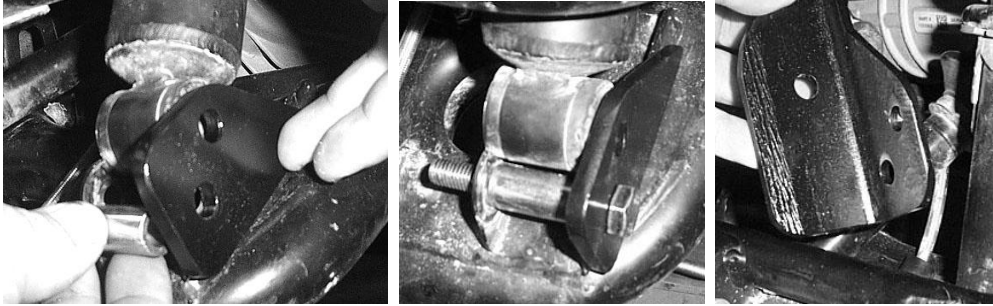
- 4) Now disconnect the lower part of the shock from the shock mount and the sway bar rod.



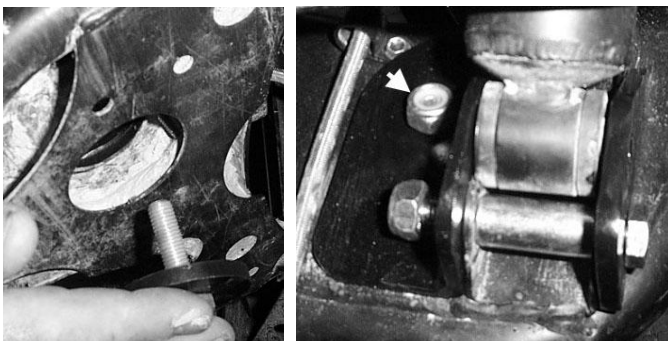
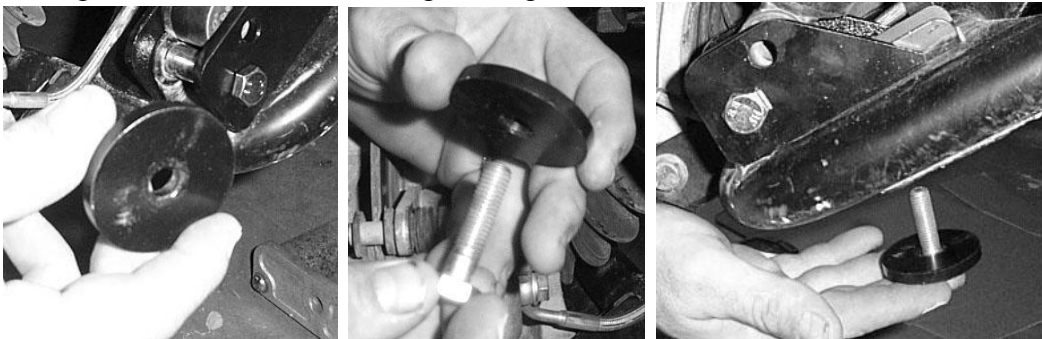
- 5) Insert the Large Spacer into the shock mount.



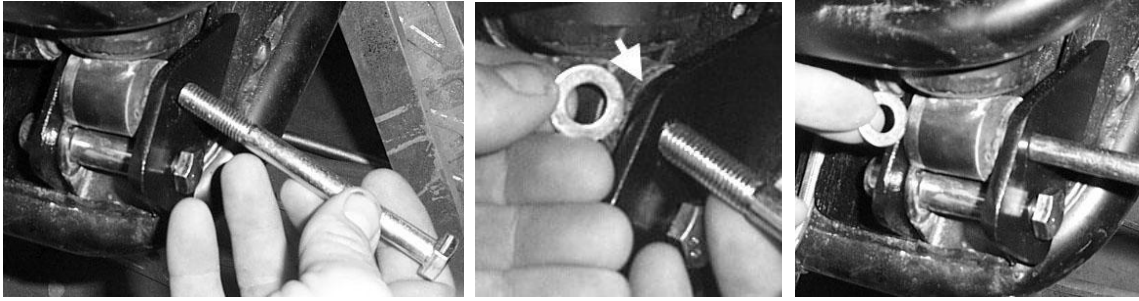
- 6) Place the appropriate left and right brackets on either side of the shock mount tabs and connect them using a 10x70mm bolt and 10mm lock nut.
- NOTE: There are left and right rear angle brackets and left and right rear flat brackets. When you are facing the shock from the side of the UTV the rear angle bracket will attach to the side that is to the front of the UTV and the flat rear bracket will mount to the rear of the UTV.



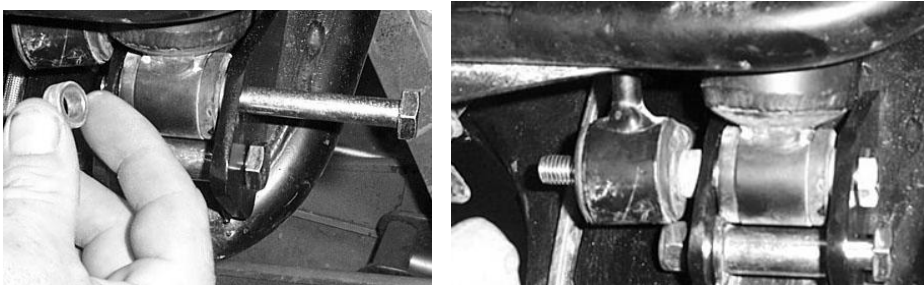
- 7) Next attach the round backing plate to the underside of the lower control arm by inserting the 10x40 hex through the backing plate, then through the lower control arm, then through the angle lift bracket. Fasten it tight using the 10mm lock nut.



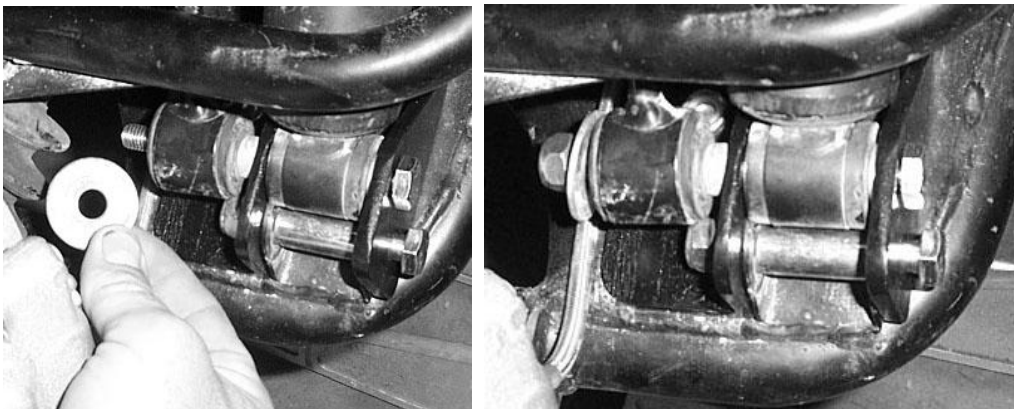
- 8) Using the 10x110mm bolt attach the bottom of the shock to the lift brackets and stabilizer rod. Place 10mm flat washers on either side of the shock eyelet between the lift brackets.



- 9) Place a small spacer on the outside of the lift bracket then place stabilizer rod eyelet onto the bolt.



- 10) Place the large factory washer next to the stabilizer rod eyelet and fasten tight with the 10mm lock nut.



- 11) Reattach the stabilizer bar to the stabilizer rod.
12) Repeat the steps for the opposite side.
13) Tighten all bolts to manufacturer's torque specifications. Install the wheels, torque wheel lug nuts to manufacturer's specifications, lower and remove jack. Check for clearance problems or misalignment.
14) Re-torque lug nuts after the first ride.

Thank You

For choosing





High Lifter Lifetime Warranty

From the beginning, High Lifter has engineered and manufactured some of the toughest, most durable products on the market. That's why this product comes with a Lifetime Warranty. It's our promise that High Lifter will never let you down.

- The **Lifetime Warranty** covers products sold to the original purchaser only and is not transferable. The term of the warranty is for the lifetime of the vehicle in question.
- Normal wear and tear items and finishes, such as, but not limited to: Heim joints, tie rod ends, ball joints, bearings, seals, bushings, bushing sleeves, zinc plating , powder coating, or chipping and discoloration of any finish is not covered.
- High Lifter will ship the replacement product after the returned product has been inspected by High Lifter staff.
- The warranty shall not include claims for damages, installation time or labor charges, economic losses, inconvenience, transportation, towing, down time, direct or indirect or consequential damages or delay resulting from any defect.
- The warranty does not apply to products that have been improperly applied or improperly installed.