



Polaris Ranger 800 6x6 Lift Kit Installation Instructions

Read before Installation

This product is designed for use on ATVs and/or RUVs to increase ground clearance and fender clearance. Purchasers should be aware that use of this product may increase the frequency of required maintenance, part wear, and will raise the center of gravity on your ATV and/or RUV, increasing risk of roll-over, injury and death on all types of terrain. It is your responsibility to always inform other operators and passengers of this vehicle about the added risks.

High Lifter Products, products are designed to best fit users ATV/RUV under stock conditions. Adding, modifying, or fabricating any OEM or aftermarket parts will void warranty. High Lifter Products, products could interfere with other aftermarket accessories. If the user has aftermarket products on machine, contact High Lifter Products to verify that they will work together. Adding aftermarket suspension components and/or more aggressive tires can cause breakage of other OEM driveline components such as differentials, axles or drive shafts.

We recommend that wider tires and/or wheel spacers be used to achieve a wider stance and to improve stability of the ATV and/or RUV. Riders should be advised that the handling characteristics of a taller ATV and/or RUV are different and require extra care when riding, particularly on side hills or off-camber situations. If you further raise the center of gravity by adding taller tires, heavy loads to racks or seats, or by any other means, the ATV and/or RUV must be operated with even more care, at slower speeds and on relatively flat ground. All turns should be done at a slow speed, even on level ground.

Operation of an ATV and/or RUV with or without modified suspension components, while or shortly after consuming alcohol or drugs, subjects the rider to the risk of serious bodily harm or possible death. This risk is compounded if the rider does not wear an approved helmet and other safety gear. High Lifter urges that all approved safety gear be worn when riding an ATV and/or RUV as a driver or passenger.

By purchasing and installing High Lifter Products, products, user agrees that should damages occur, High Lifter Products will not be held responsible for loss of time, use, labor fees, replacement parts, or freight charges. High Lifter Products will not be held responsible for any direct, indirect, incidental, special, or consequential damages that result from any product purchased from High Lifter Products. The total liability of seller to user for all damages, losses, and causes of action, shall not exceed the total purchase price paid for the product that gives rise to the claim.

Dealers and other Installers

You are responsible for informing your customer and end user of the information contained above and the increased potential hazards of operating an ATV and/or RUV equipped with modified suspension components. If you install any suspension modifying components, it is your responsibility to also install the warning label prominently in view of the driver and in prominent view of the driver and passenger on RUVs and multi-passenger ATVs. They should also be instructed to notify anyone operating the vehicle, as well as any passengers, that said vehicle is modified.

As discussed above, it is critically important that they be instructed in the need for slower speed operation, regardless of terrain, after this lift kit is installed.

NOTE: 1.5" WHEEL SPACERS ARE REQUIRED WHEN USING THE FACTORY POLARIS WHEELS WITH THIS LIFT KIT INSTALLED. IT IS ALSO HIGHLY RECOMMENDED THAT 1" to 1.5" WHEEL SPACERS BE USED SO AS TO INCREASE THE WIDTH AND STABILITY OF THE MACHINE EVEN IF AFTERMARKET WHEELS ARE INSTALLED. HIGH SPEED MANEUVERS SHOULD BE AVOIDED WHEN THE MACHINE HAS BEEN LIFTED AND LARGER TIRES MOUNTED.

Parts Diagram

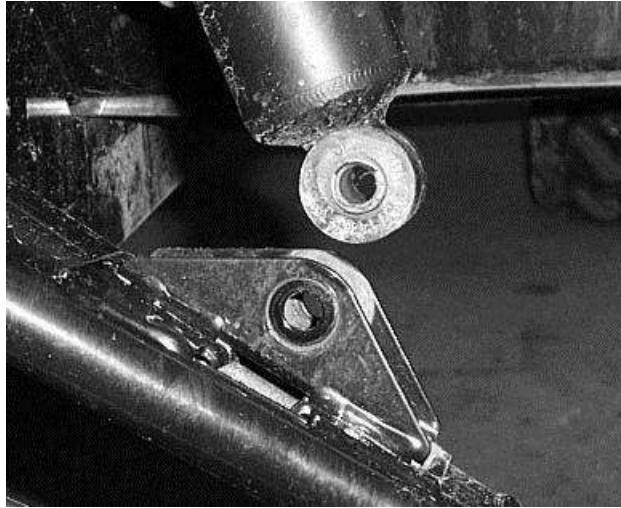
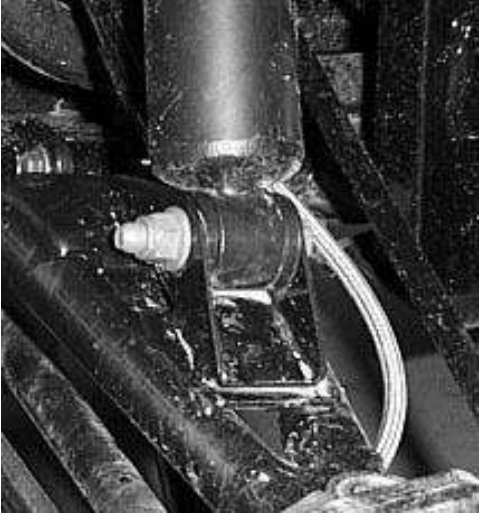


Alignment Cone (2ea)
10mm Washer (2ea)
10mm Lock Nut (2ea)
10 x 80mm Bolt (2ea)

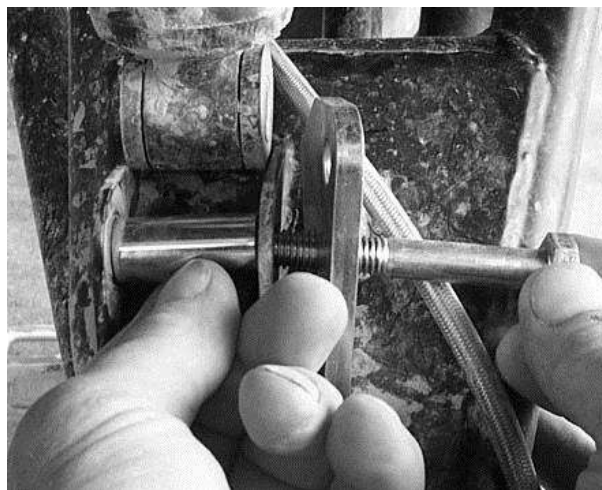


Front Lift Installation

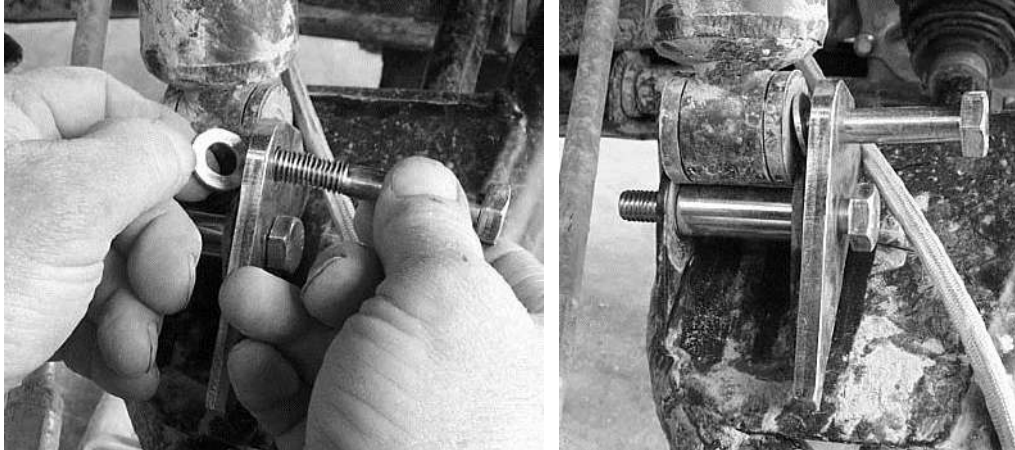
- 1) Place ATV transmission in park. Place jack under center of ATV front end and lift until front wheels clear the ground. Be careful to support ATV properly so that it is securely supported so that A-arms and shocks can droop to full extension.
- 2) Remove front wheels.
- 3) Remove the bottom of the front shocks.



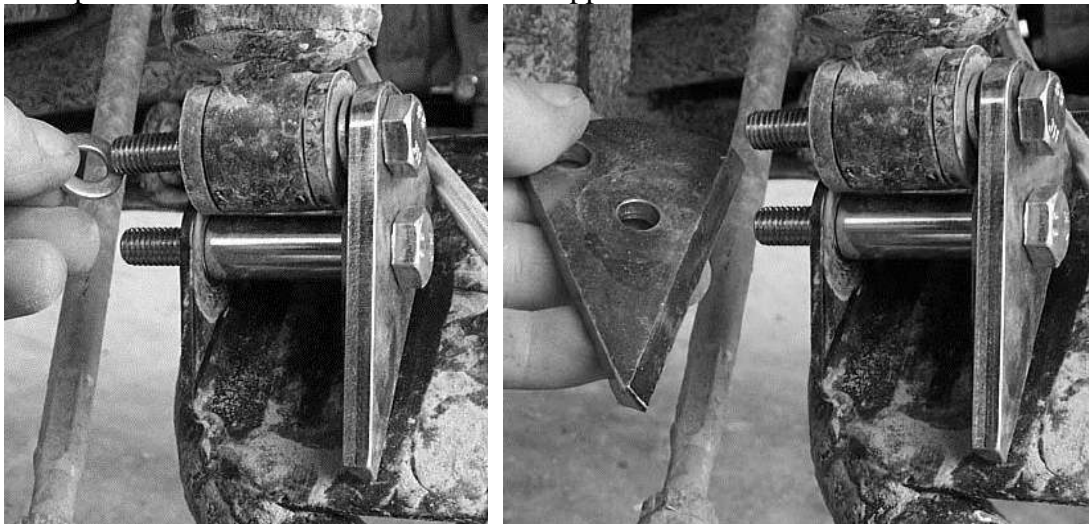
- 4) Place the Right lift bracket next to the front shock mount. Connect the lift bracket to the frame using the 10mm x 70mm hex bolts and 10mm lock nuts. Insert the Large spacer between the shock mount tabs.



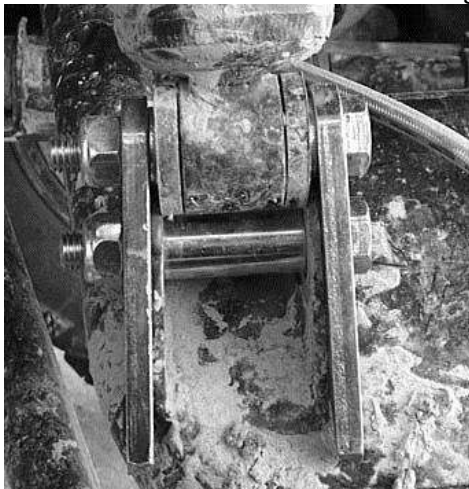
- 5) Connect bottom of the shock to the lift bracket using a 10mm x 70mm bolt and 10mm flat washer.



- 6) Now place a 10mm flat washer next to the opposite side and connect the left



- 7) Secure the bracket to the frame using 10mm lock nuts.



- 8) You will need to remove some material from the area where lower control arm mounts to the frame. You will only need to remove a small area nearest the axle boot.

NOTE: You will damage the boots if you do not remove this material!!!



High Alignment Cone

- 1) Disconnect the stock tie rod from the knuckle assembly.
- 2) Insert the new 10x80mm hex bolt through the rod end and into the cone.



- 3) Connect the cone to the knuckle using 10mm washer and 10mm lock nut.



- 4) Repeat steps for opposite side.

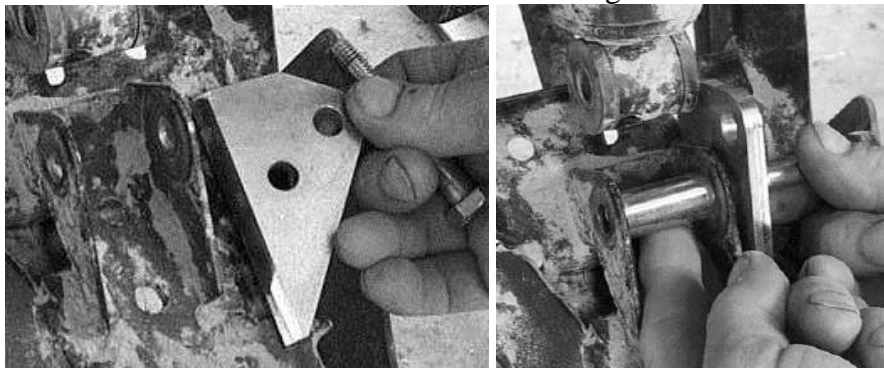
Rear Lift Installation

Mid Drive Section

- 1) Place ATV transmission in park. Place jack under center of ATV front end and lift until rear wheels clear the ground. Be careful to support ATV properly so that it is securely supported so that A-arms and shocks can droop to full extension.
- 2) Remove the rear wheels.
- 3) Disconnect the lower part of the rear shock from the control arm.



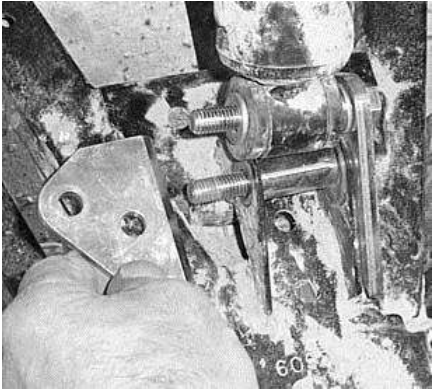
- 4) Place the Right lift bracket next to the shock mount. Place the Large spacer between the shock mount tabs. Connect the lift bracket to the frame using the 10mm x 70mm hex bolts and 10mm lock nuts.



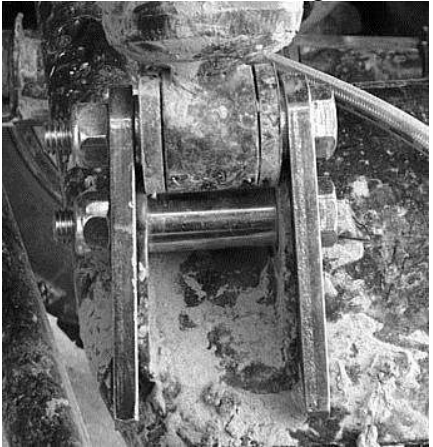
- 5) Next, insert the bottom of the shock into the top of the bracket. Place one of the 10mm flat washers inside of the bracket on one side of the shock. Insert the 10mm x 70mm hex bolt through the bracket, washer, and then shock.



- 6) Connect the left bracket to the shock mount placing a 10mm washer between the shock and the bracket.



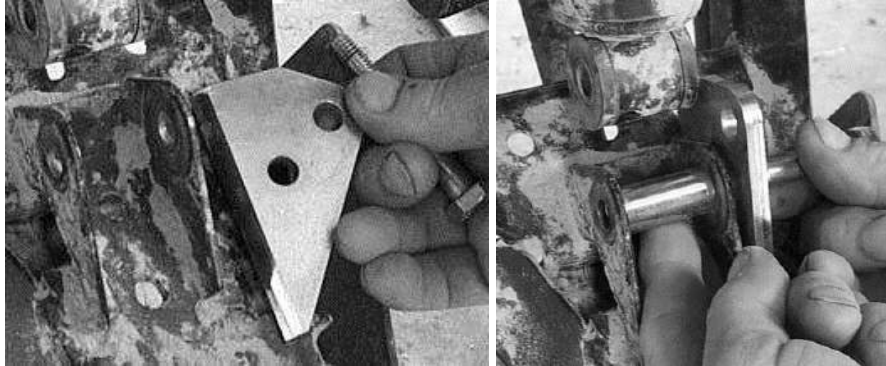
- 7) Secure the brackets using two 10m lock nuts.



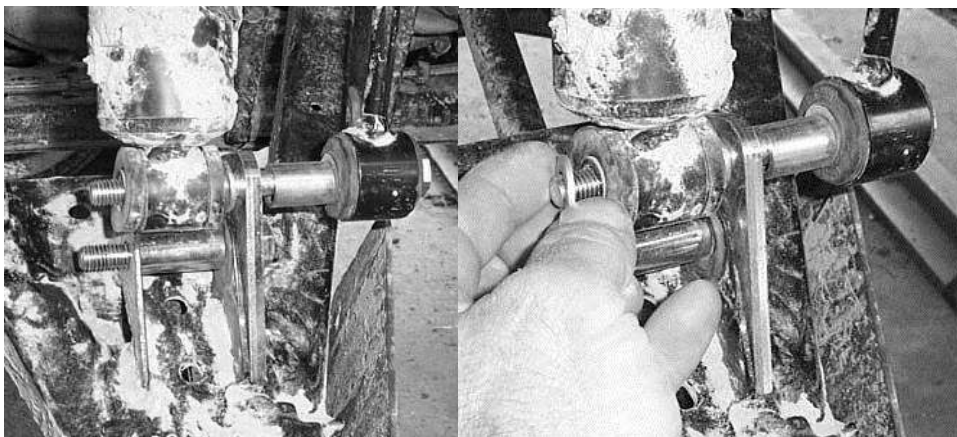
- 8) Repeat steps for opposite side.
- 9) Lower the jack and place the wheels back on the ATV.

Rear Drive Section

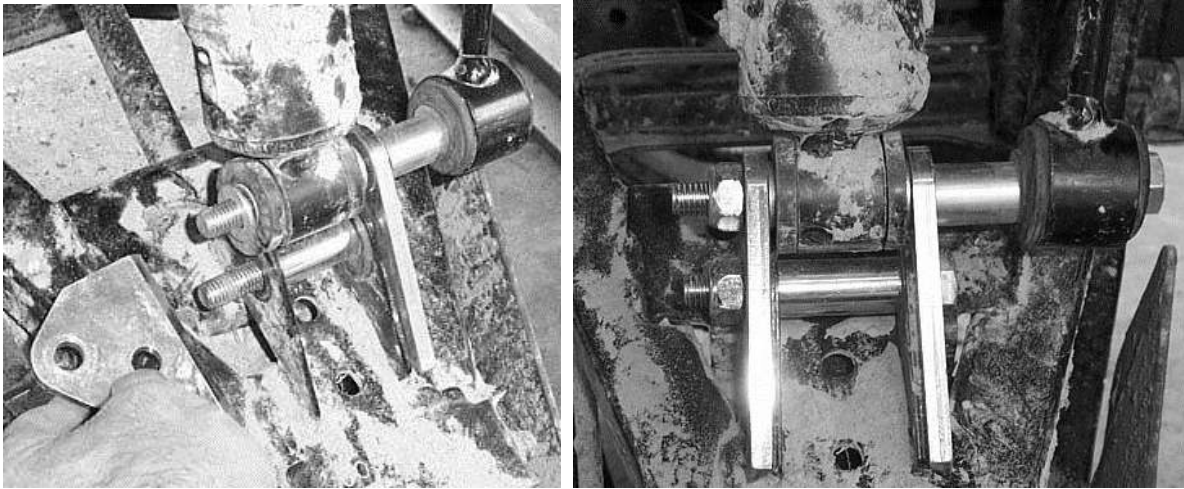
1. There is an additional spacer and bolt added to the kit for connecting the sway bar to the shock mount / lift bracket.
2. Place the Right lift bracket next to the shock mount. Place the Large spacer between the shock mount tabs. Connect the lift bracket to the frame using the 10mm x 70mm hex bolts and 10mm lock nuts.



3. Use the 10 x 130mm hex head bolt and spacer to connect shock and the sway bar to the shock mount / lift brackets.



4. Connect the left bracket to the shock mount placing a 10mm washer between the shock and the bracket.
5. Secure the brackets using two 10m lock nuts.

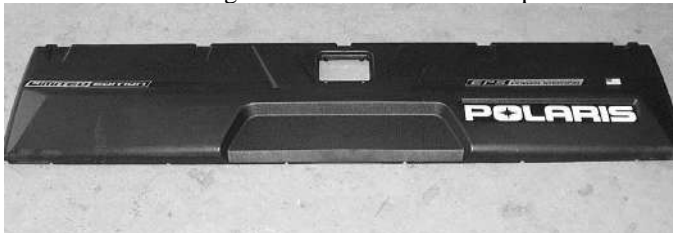


High Lifter Name Plate Installation

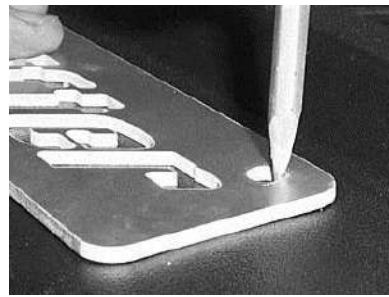
1. You will need to disassemble the tail gate. Remove the top rail and latch. Remove the screws that are on the side of the tail gate that is to the inside of the bed.



2. Disassemble the tail gate and take the cover and place it on a flat surface.



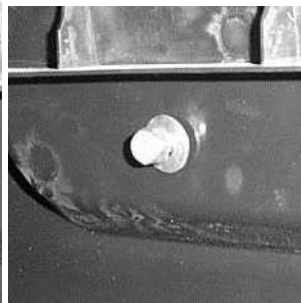
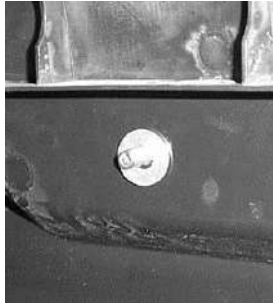
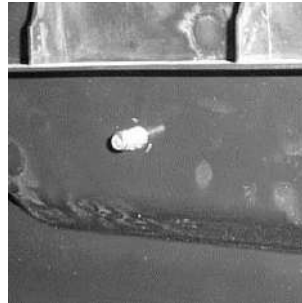
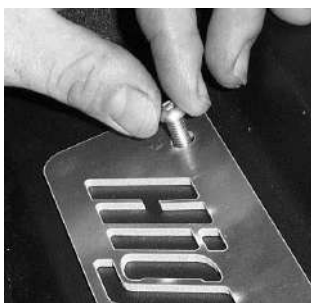
3. Using the name plate as a guide, place it on the location shown in the photo. Center it and mark the 1/4" bolt hole locations.



4. Once you have marked the $\frac{1}{4}$ " holes, use a $\frac{1}{8}$ " drill bit and drill the holes.



5. Place the name plate back on the tail gate and insert the $\frac{1}{4}$ x $\frac{3}{4}$ button head bolts through the plate and plastic. On the backside of the tail gate where the bolts are showing, place the $\frac{1}{4}$ " flat washers on the bolts and connect them using the $\frac{1}{4}$ " lock nuts.



6. Reconnect the tail gate.





High Lifter Lifetime Warranty

From the beginning, High Lifter has engineered and manufactured some of the toughest, most durable products on the market. That's why this product comes with a Lifetime Warranty. It's our promise that High Lifter will never let you down.

- The **Lifetime Warranty** covers products sold to the original purchaser only and is not transferable. The term of the warranty is for the lifetime of the vehicle in question.
- Normal wear and tear items and finishes, such as, but not limited to: Heim joints, tie rod ends, ball joints, bearings, seals, bushings, bushing sleeves, zinc plating , powder coating, or chipping and discoloration of any finish is not covered.
- High Lifter will ship the replacement product after the returned product has been inspected by High Lifter staff.
- The warranty shall not include claims for damages, installation time or labor charges, economic losses, inconvenience, transportation, towing, down time, direct or indirect or consequential damages or delay resulting from any defect.
- The warranty does not apply to products that have been improperly applied or improperly installed.