



Polaris 800 RANGER RZR “S” and “4” Models Lift Kit Installation Instructions

Read before Installation

This product is designed for use on ATVs and/or RUVs to increase ground clearance and fender clearance. Purchasers should be aware that use of this product may increase the frequency of required maintenance, part wear, and will raise the center of gravity on your ATV and/or RUV, increasing risk of roll-over, injury and death on all types of terrain. It is your responsibility to always inform other operators and passengers of this vehicle about the added risks.

High Lifter Products, products are designed to best fit users ATV/RUV under stock conditions. Adding, modifying, or fabricating any OEM or aftermarket parts will void warranty. High Lifter Products, products could interfere with other aftermarket accessories. If the user has aftermarket products on machine, contact High Lifter Products to verify that they will work together. Adding aftermarket suspension components and/or more aggressive tires can cause breakage of other OEM driveline components such as differentials, axles or drive shafts.

We recommend that wider tires and/or wheel spacers be used to achieve a wider stance and to improve stability of the ATV and/or RUV. Riders should be advised that the handling characteristics of a taller ATV and/or RUV are different and require extra care when riding, particularly on side hills or off-camber situations. If you further raise the center of gravity by adding taller tires, heavy loads to racks or seats, or by any other means, the ATV and/or RUV must be operated with even more care, at slower speeds and on relatively flat ground. All turns should be done at a slow speed, even on level ground.

Operation of an ATV and/or RUV with or without modified suspension components, while or shortly after consuming alcohol or drugs, subjects the rider to the risk of serious bodily harm or possible death. This risk is compounded if the rider does not wear an approved helmet and other safety gear. High Lifter urges that all approved safety gear be worn when riding an ATV and/or RUV as a driver or passenger.

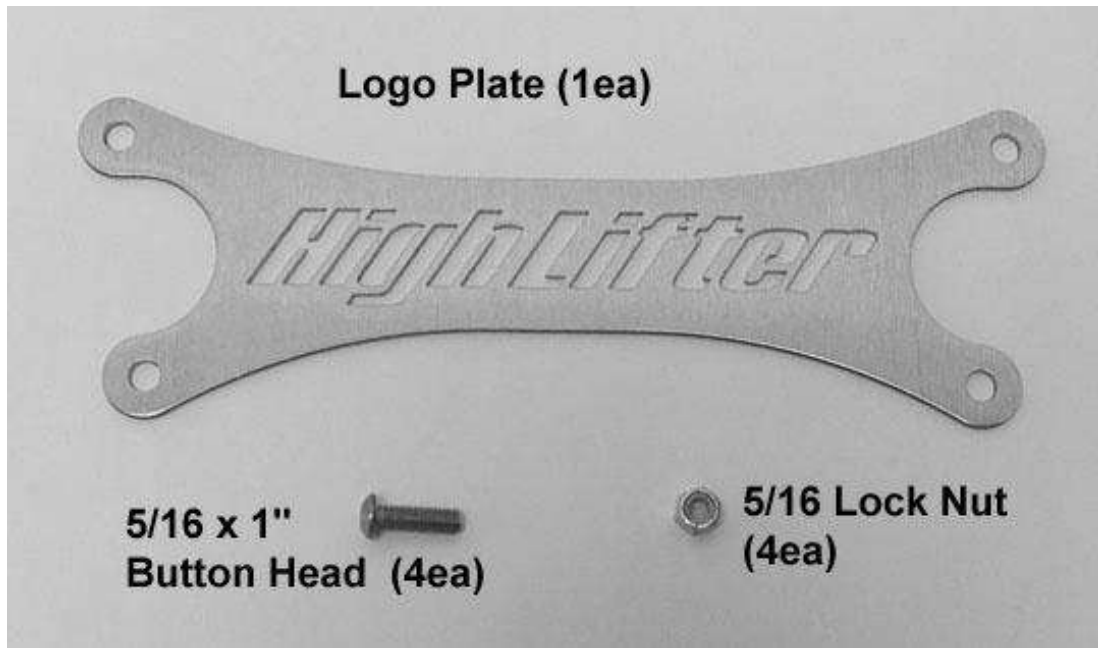
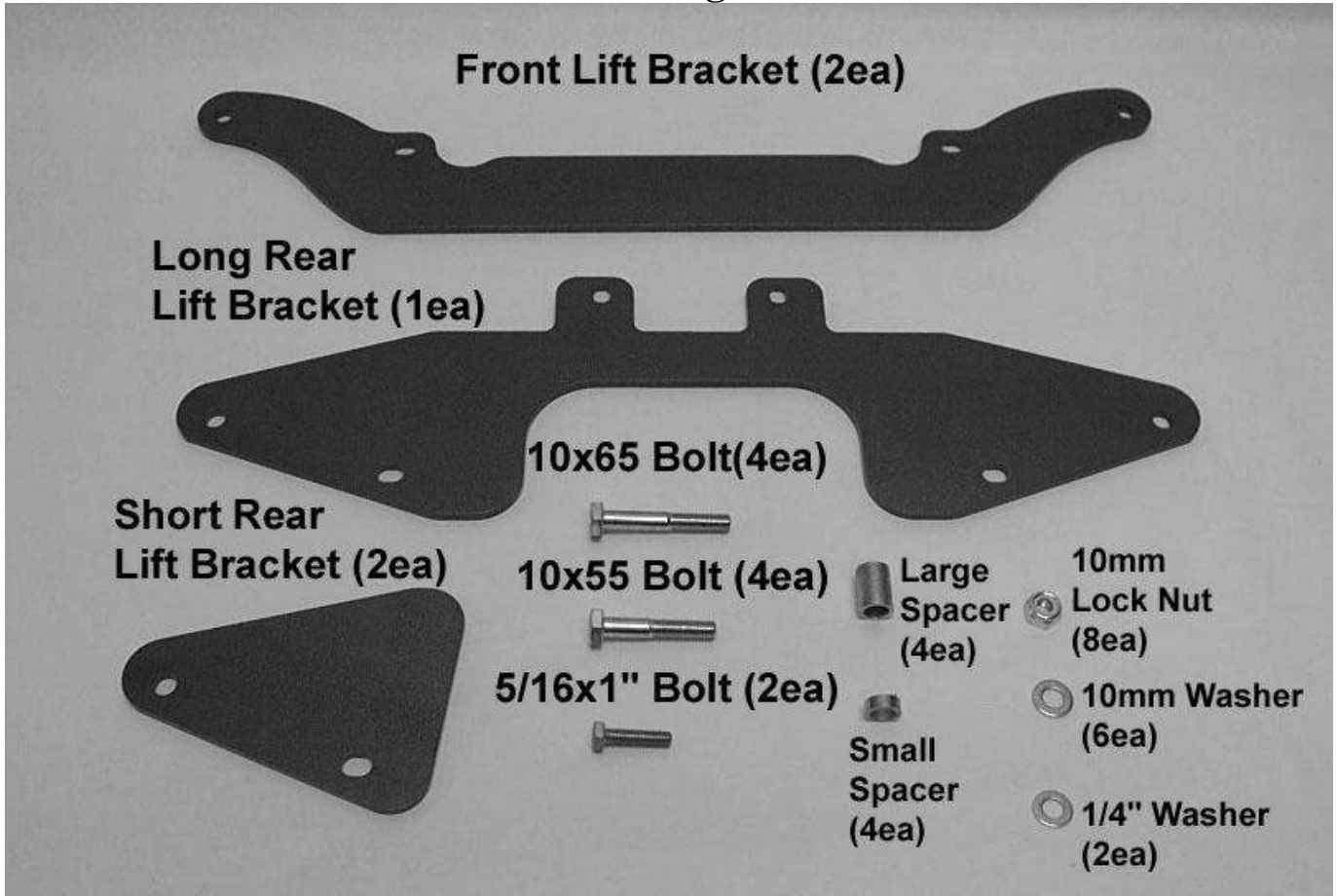
By purchasing and installing High Lifter Products, products, user agrees that should damages occur, High Lifter Products will not be held responsible for loss of time, use, labor fees, replacement parts, or freight charges. High Lifter Products will not be held responsible for any direct, indirect, incidental, special, or consequential damages that result from any product purchased from High Lifter Products. The total liability of seller to user for all damages, losses, and causes of action, shall not exceed the total purchase price paid for the product that gives rise to the claim.

Dealers and other Installers

You are responsible for informing your customer and end user of the information contained above and the increased potential hazards of operating an ATV and/or RUV equipped with modified suspension components. If you install any suspension modifying components, it is your responsibility to also install the warning label prominently in view of the driver and in prominent view of the driver and passenger on RUVs and multi-passenger ATVs. They should also be instructed to notify anyone operating the vehicle, as well as any passengers, that said vehicle is modified.

As discussed above, it is critically important that they be instructed in the need for slower speed operation, regardless of terrain, after this lift kit is installed.

Parts Diagram

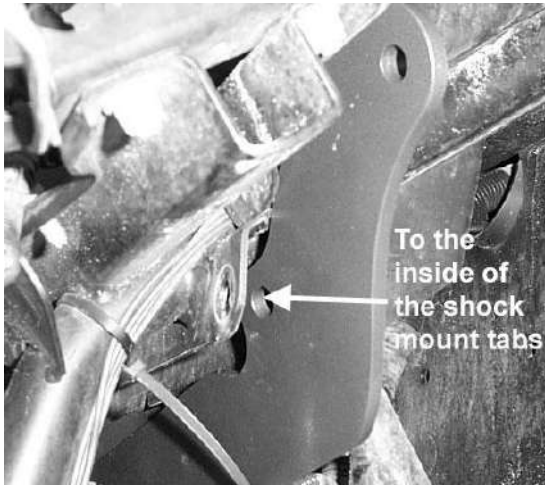


Front Lift Installation

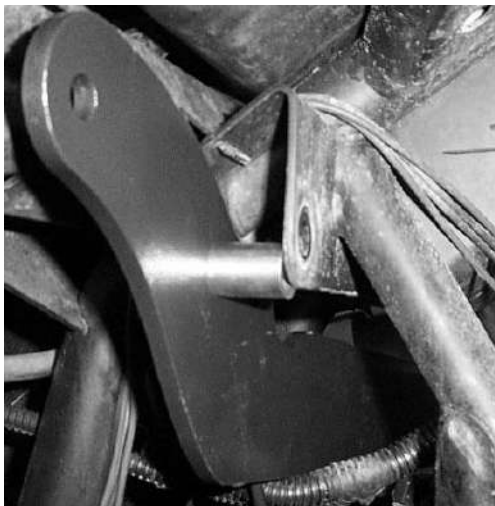
- 1) Place UTV transmission in park. Place jack under center of UTV front end and lift until front wheels clear the ground. Be careful to support UTV properly so that it is securely supported so that A-arms and shocks can droop to full extension.
- 2) Remove front wheels.
- 3) Disconnect the top of the front shocks from the shock mount tabs on both sides of the UTV.



- 4) Insert one of the front lift brackets into the inside of the shock mount tabs.

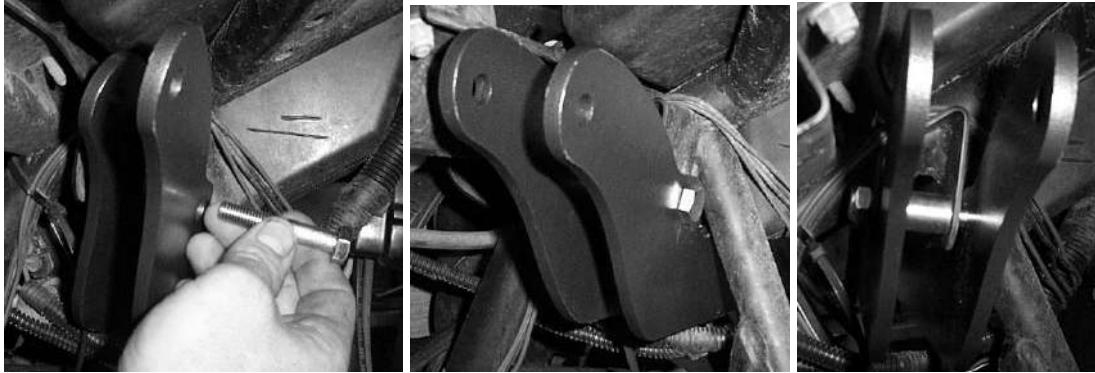


- 5) Place the Large Spacer into the shock mount tab. Place it between the lift bracket and the shock mount tab.



- 6) Next place the other lift bracket on the outside of the shock mount tabs, to the side that faces the rear.

- 7) Insert the 10x55mm hex bolt through the plates and spacer from the rear towards the front then secure it using a 10mm lock nut.



- 8) Follow the steps for the opposite side.
9) Next attach the top of the shock to the lift brackets using a 10x55mm hex bolt and 10mm lock nut. Insert the bolt from the rear through to the front.



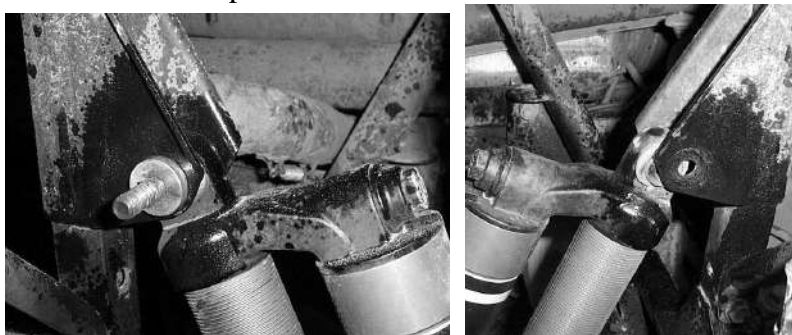
- 10) Place wheels back on UTV and torque lugs to factory specification.

Rear Installation

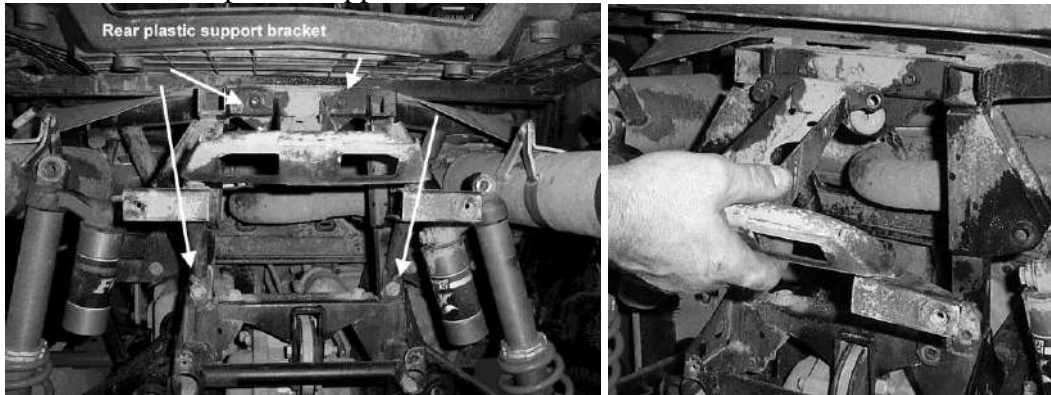
- 1) Place UTV transmission in park. Place jack under center of UTV rear end and lift until rear wheels clear the ground. Be careful to support UTV properly so that it is securely supported so that A-arms and shocks can droop to full extension.
- 2) Remove the tires and wheels
- 3) Remove the rear plastic and if you have purchased the aftermarket rear bumper you will need to remove it.



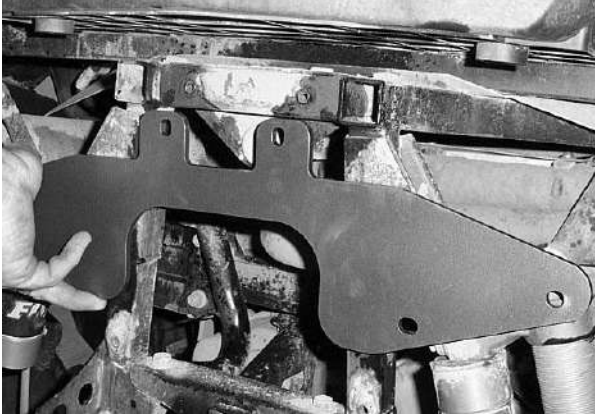
- 4) Disconnect the top of the rear shocks.



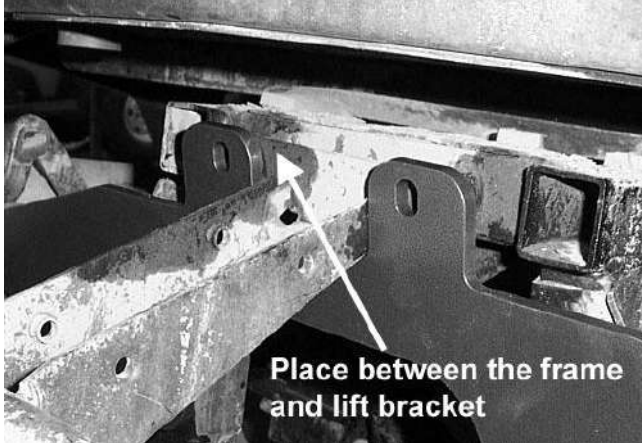
- 5) Remove the rear plastic support bracket.



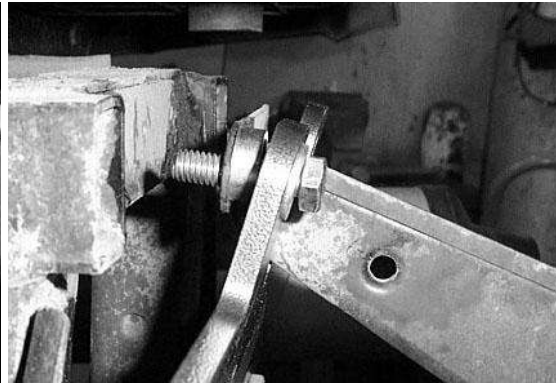
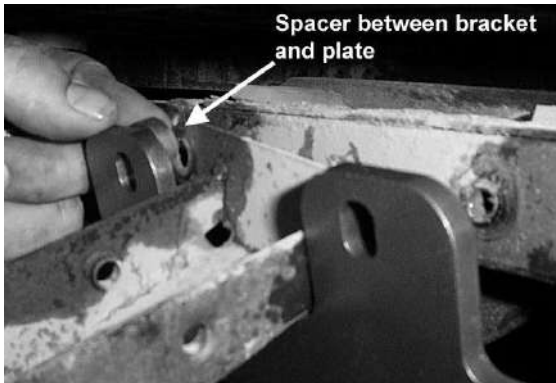
- 6) Place the large rear lift bracket next to the frame.



- 7) Insert the rear plastic support bracket between the long rear lift plate and the frame.

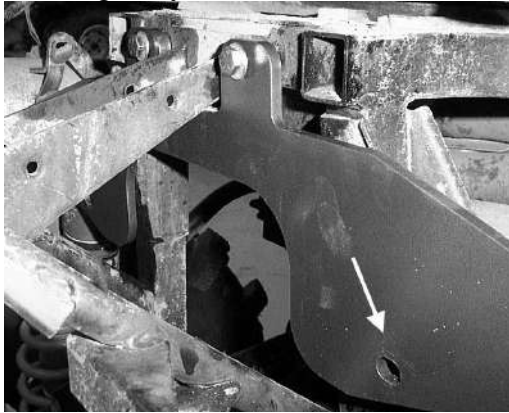


- 8) Place a small spacer between the lift plate and the plastic support bracket. Secure it with a 5/16 x 1 1/4 hex bolts and 1/4" flat washers.

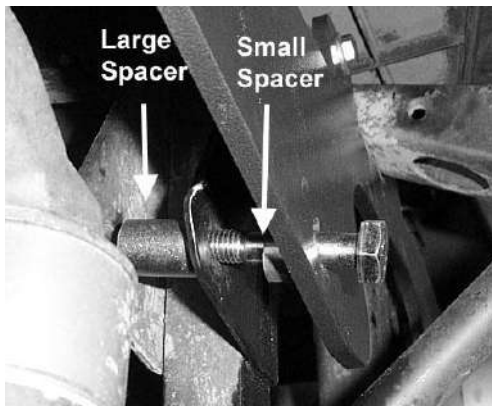
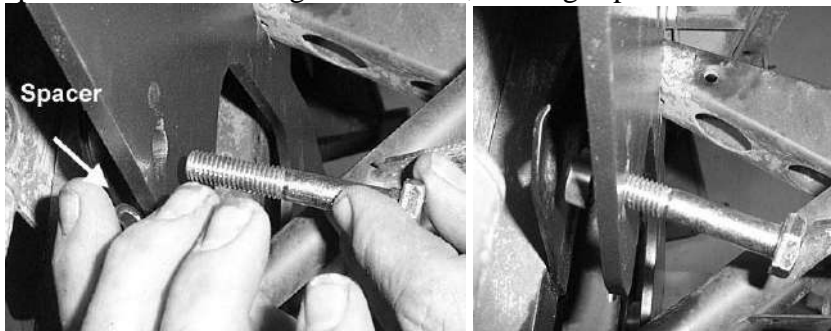


NOTE: Make sure to reconnect the bottom of the plastic support bracket to the frame using the stock hardware.

- 9) Next you need to connect the small lift plate to the UTV using the shock mount tabs were the shock was originally connected.



- 10) You will need to use one large spacer, one small spacer and 10x65mm hex bolt. Place the small spacer between the large lift bracket, the large spacer between the shock mount tabs.

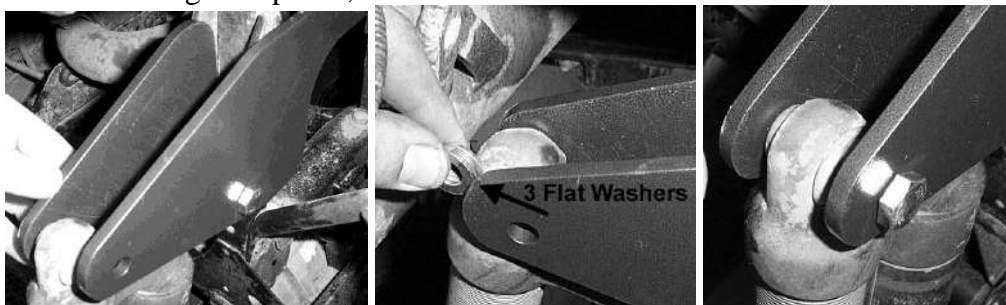


- 11) Place the small lift plate to the inside of the rear shock mount tabs between the spacer and the shock mount tab. Fasten the plates with a 10mm lock nut.

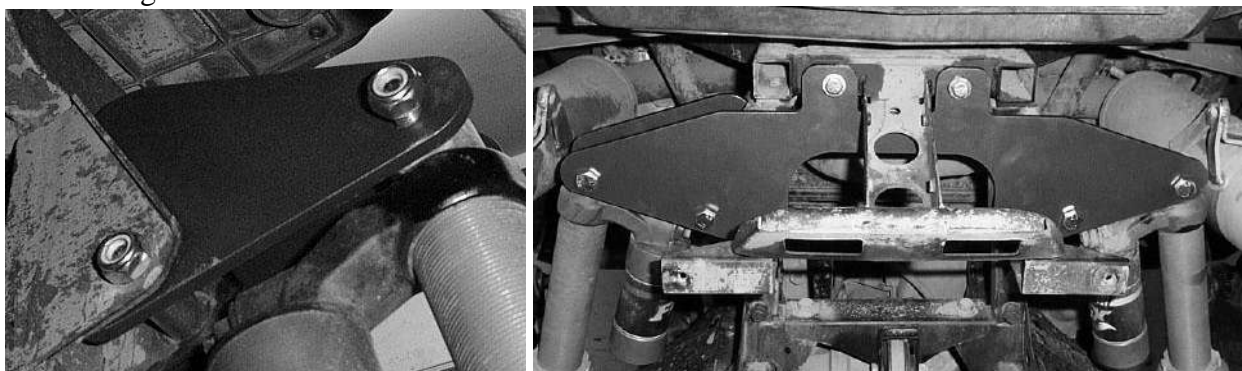


12) Now connect the top of the shock to the brackets.

13) Insert 3ea 10mm flat washers between the shock eyelet and the large lift bracket. Insert a 10x65mm hex bolt through the plates, washers and shock.



14) Fasten it tight with a 10mm lock nut.



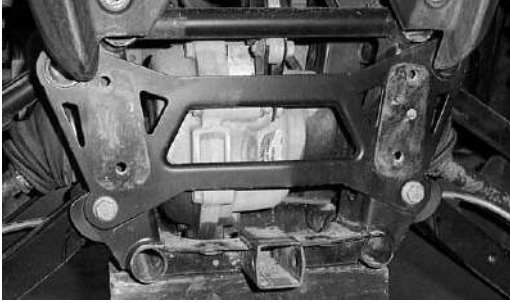
NOTE: If you are running Dual Exhaust you may need to rotate your shock reservoir to the inside toward the frame.

15) Place plastic back onto the UTV.

16) Place wheels back on the UTV torque all lugs to factory specifications.

Logo Plate Installation

- 1) There are four bolt holes where the aftermarket bumper attaches to the UTV. They are on the rear of the UTV frame.



- 2) Place the logo plate next to the frame aligning the bolt holes in the plate to the holes in the frame.



- 3) Then connect the plate to the frame using 5/16 x 1" stainless steel button head bolts and 5/16 lock nuts.



Note: The bolts in the photo are Hex head and were replaced with button head bolts.

- 4) If you have the aftermarket rear bumper you will need to place the plate over the end of the bumper.



Thank You
For choosing
High Lifter
PRODUCTS



High Lifter Lifetime Warranty

From the beginning, High Lifter has engineered and manufactured some of the toughest, most durable products on the market. That's why this product comes with a Lifetime Warranty. It's our promise that High Lifter will never let you down.

- The **Lifetime Warranty** covers products sold to the original purchaser only and is not transferable. The term of the warranty is for the lifetime of the vehicle in question.
- Normal wear and tear items and finishes, such as, but not limited to: Heim joints, tie rod ends, ball joints, bearings, seals, bushings, bushing sleeves, zinc plating , powder coating, or chipping and discoloration of any finish is not covered.
- High Lifter will ship the replacement product after the returned product has been inspected by High Lifter staff.
- The warranty shall not include claims for damages, installation time or labor charges, economic losses, inconvenience, transportation, towing, down time, direct or indirect or consequential damages or delay resulting from any defect.
- The warranty does not apply to products that have been improperly applied or improperly installed.