



## **Polaris 900 XP Ranger Lift Kit Installation Instructions**

### Read before Installation

This product is designed for use on ATVs and/or RUVs to increase ground clearance and fender clearance. Purchasers should be aware that use of this product may increase the frequency of required maintenance, part wear, and will raise the center of gravity on your ATV and/or RUV, increasing risk of roll-over, injury and death on all types of terrain. It is your responsibility to always inform other operators and passengers of this vehicle about the added risks.

High Lifter Products, products are designed to best fit users ATV/RUV under stock conditions. Adding, modifying, or fabricating any OEM or aftermarket parts will void warranty. High Lifter Products, products could interfere with other aftermarket accessories. If the user has aftermarket products on machine, contact High Lifter Products to verify that they will work together. Adding aftermarket suspension components and/or more aggressive tires can cause breakage of other OEM driveline components such as differentials, axles or drive shafts.

We recommend that wider tires and/or wheel spacers be used to achieve a wider stance and to improve stability of the ATV and/or RUV. Riders should be advised that the handling characteristics of a taller ATV and/or RUV are different and require extra care when riding, particularly on side hills or off-camber situations. If you further raise the center of gravity by adding taller tires, heavy loads to racks or seats, or by any other means, the ATV and/or RUV must be operated with even more care, at slower speeds and on relatively flat ground. All turns should be done at a slow speed, even on level ground.

Operation of an ATV and/or RUV with or without modified suspension components, while or shortly after consuming alcohol or drugs, subjects the rider to the risk of serious bodily harm or possible death. This risk is compounded if the rider does not wear an approved helmet and other safety gear. High Lifter urges that all approved safety gear be worn when riding an ATV and/or RUV as a driver or passenger.

By purchasing and installing High Lifter Products, products, user agrees that should damages occur, High Lifter Products will not be held responsible for loss of time, use, labor fees, replacement parts, or freight charges. High Lifter Products will not be held responsible for any direct, indirect, incidental, special, or consequential damages that result from any product purchased from High Lifter Products. The total liability of seller to user for all damages, losses, and causes of action, shall not exceed the total purchase price paid for the product that gives rise to the claim.

### Dealers and other Installers

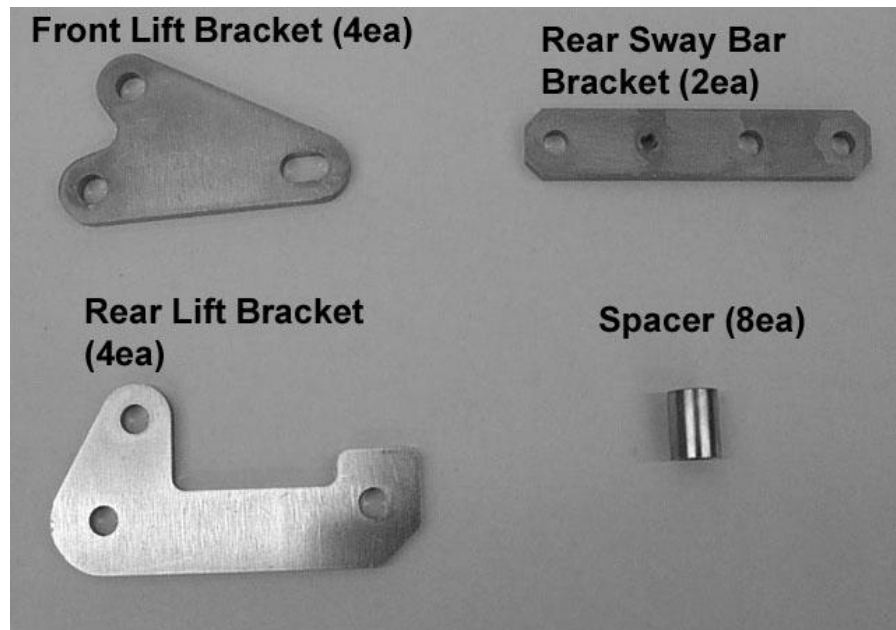
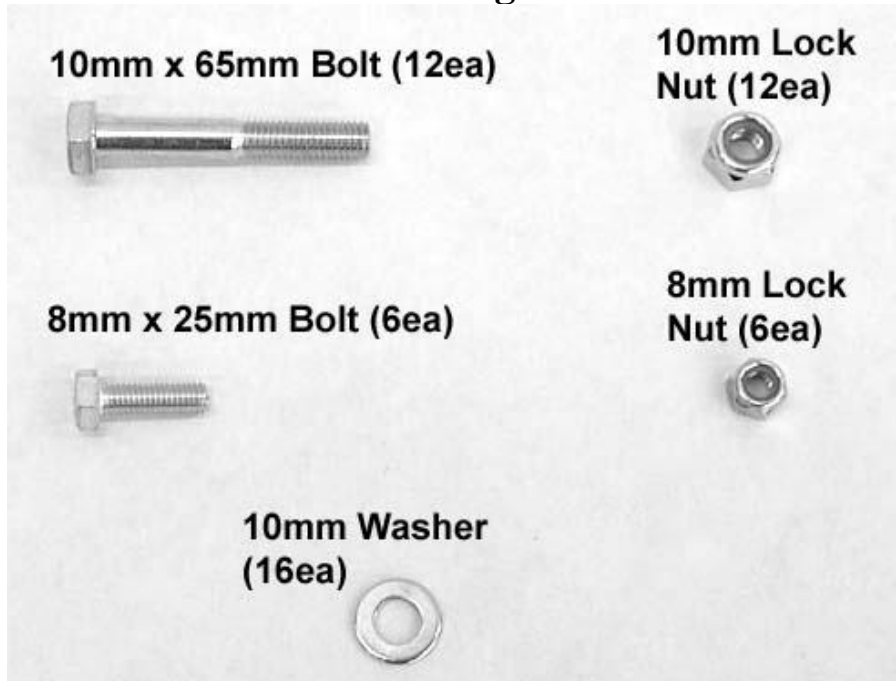
You are responsible for informing your customer and end user of the information contained above and the increased potential hazards of operating an ATV and/or RUV equipped with modified suspension components. If you install any suspension modifying components, it is your responsibility to also install the warning label prominently in view of the driver and in prominent view of the driver and passenger on RUVs and multi-passenger ATVs. They should also be instructed to notify anyone operating the vehicle, as well as any passengers, that said vehicle is modified.

As discussed above, it is critically important that they be instructed in the need for slower speed operation, regardless of terrain, after this lift kit is installed.

**NOTE: 1.5" SPACERS ARE REQUIRED IN THE REAR IF YOU ARE RUNNING FACTORY 900 RANGER STEEL WHEELS!**

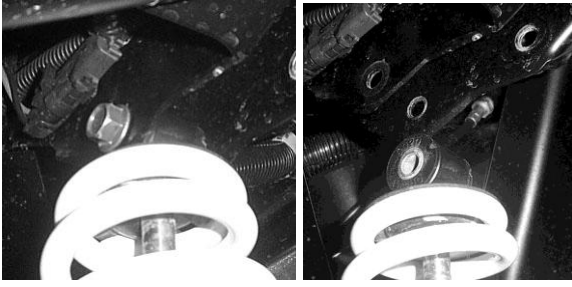
**NOTE: IF RUNNING FACTORY RANGER 900 ALUMINUM WHEELS OR AFTERMARKET ALUMINUM WHEELS THEN SPACERS ARE NOT REQUIRED.**

## Parts Diagram

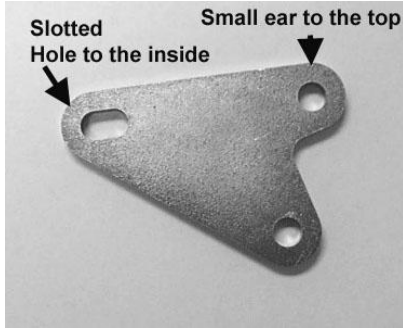


### Front Lift Installation

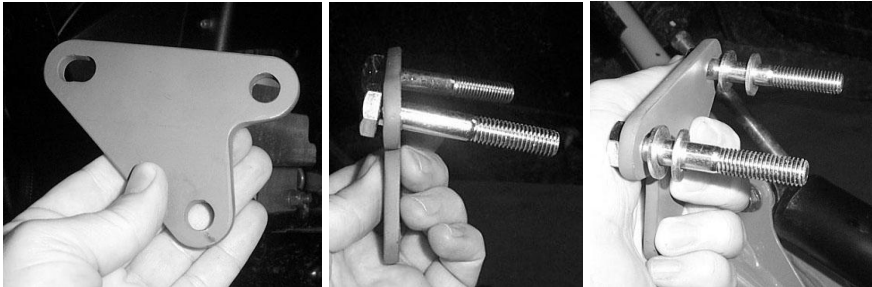
- 1) Place UTV transmission in park. Place jack under center of UTV front end and lift until front wheels clear the ground. Be careful to support the UTV properly so that A-arms and shocks can droop to full extension.
- 2) Remove front wheels.
- 3) Remove the top of the front shocks.



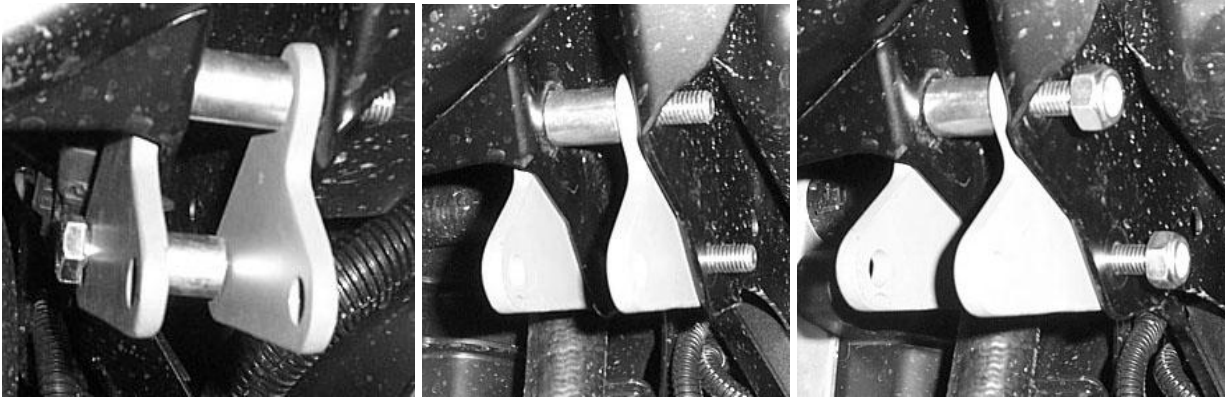
- 4) When installing the front lift bracket make sure to note the direction of the bracket. The slotted hole goes to the inside of the frame and the small ear goes to the top.



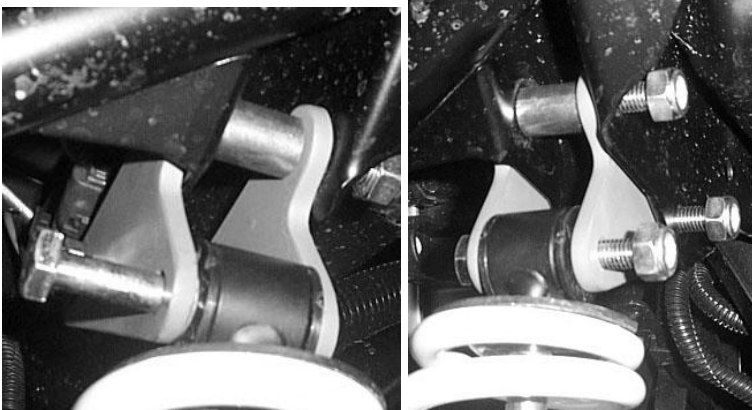
- 5) Place the one lift bracket to the outside of the front shock mount. It needs to be on the side that faces the front of the UTV. Connect the bracket using two 10x65mm hex bolts and four 10mm flat washers. Insert the two bolts through the bracket, then place two washers on each bolt. Insert the bolts through the shock mount tabs.



- 6) Now insert a spacer on each of the bolts and the other front lift bracket to the inside of the shock mount tab. Loosely fasten it with two 10mm lock nuts.



7) Connect the top of the shock to the lift brackets using one 10x65mm hex bolt and 10mm lock nut.



8) Once all the bolts are in place fasten them tight. Repeat the steps for the opposite side.



9) When you have finished the opposite side reinstall the front wheels torque the lugs to factory specifications.

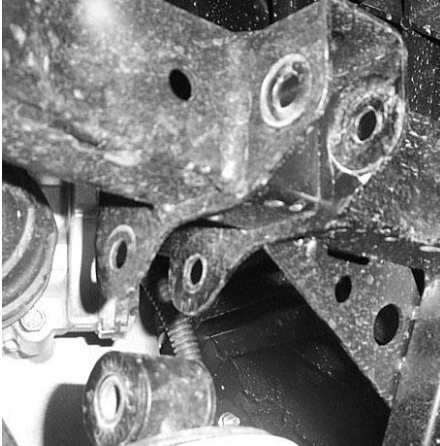
## Rear Lift Installation

- 1) Place UTV transmission in park. Place jack under center of UTV front end and lift until rear wheels clear the ground. Be careful to support the UTV properly so that A-arms and shocks can droop to full extension.
- 2) Remove the rear wheels.

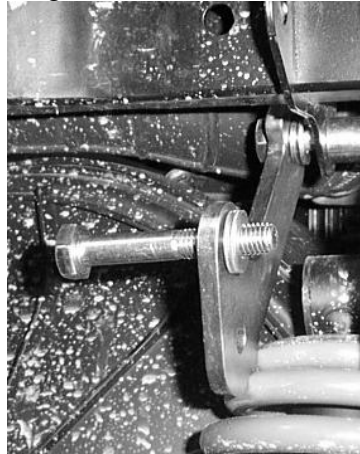
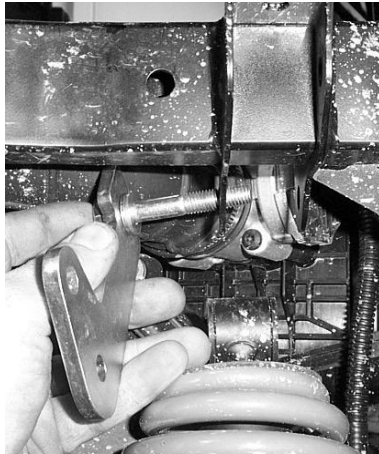
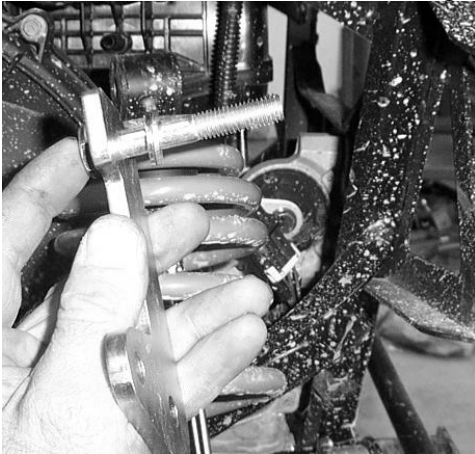
- 3) Loosen the nuts that secure the sway bar to the sway bar rod. Only loosen the nuts.



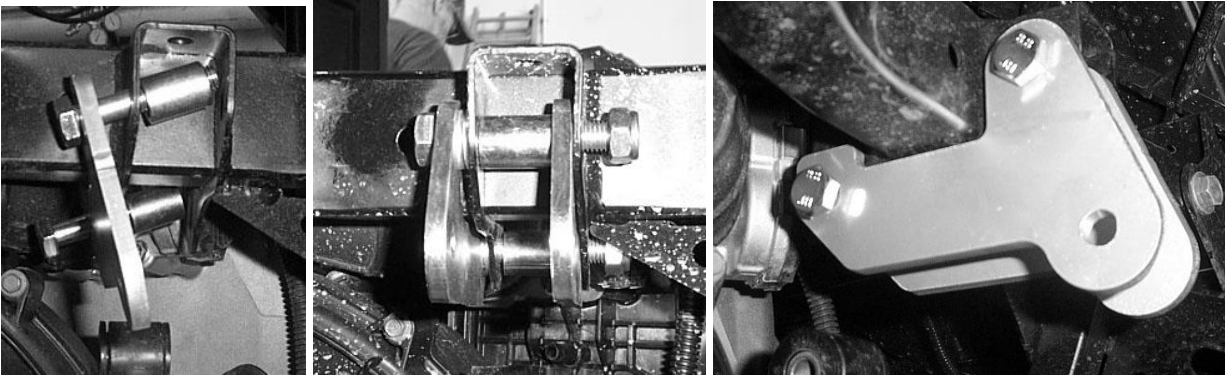
- 4) Disconnect the upper part of the rear shock from the frame.



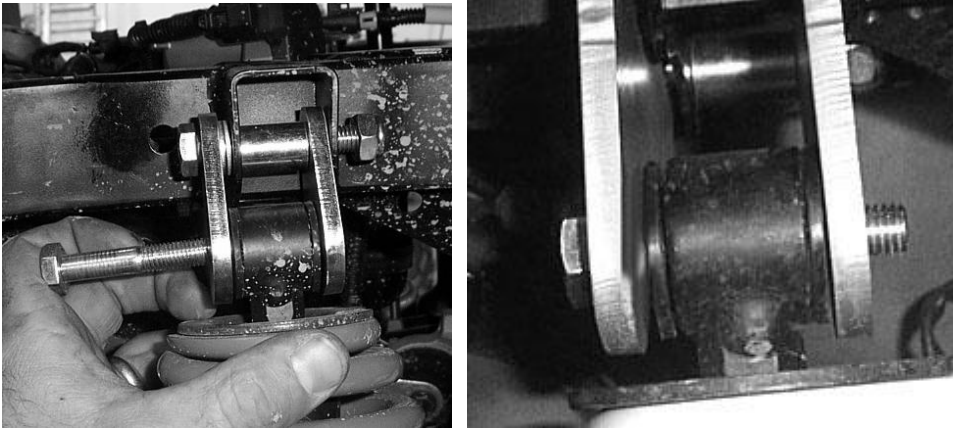
- 5) Place the one rear lift bracket to the outside of the rear shock mount. It needs to be on the side that faces the front of the UTV. Connect the bracket using two 10x65mm hex bolts. Place two 10mm washers on each bolt then insert the two bolts through the bracket. Insert the bolts through the shock mount tabs.



- 6) Now insert a spacer on each of the bolts and the other rear lift bracket to the inside of the shock mount tab. Loosely fasten it with two 10mm lock nuts.



7) Connect the top of the shock to the lift brackets using one 10x65mm hex bolt and 10mm lock nut.



8) Once all the bolts are in place fasten them tight. Repeat the steps for the opposite side.



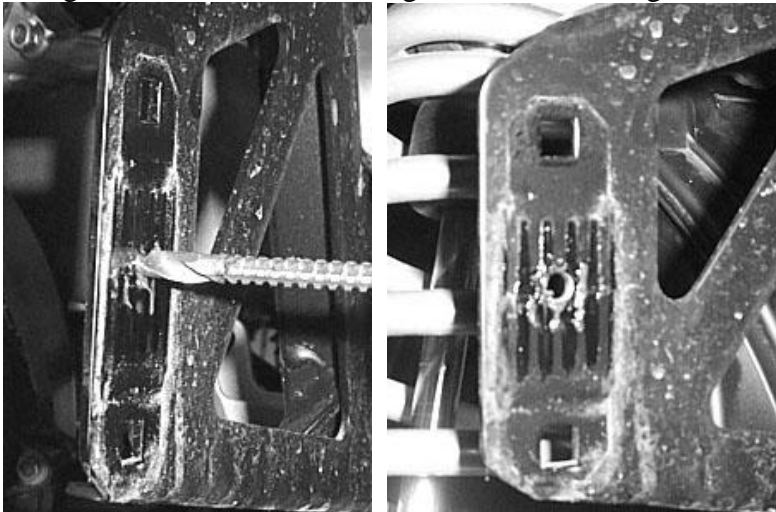
9) Next disconnect the two brackets that connect the sway bar to the frame.



10) Remove the grease fitting from the frame and attach it to the new sway bar relocating bracket.

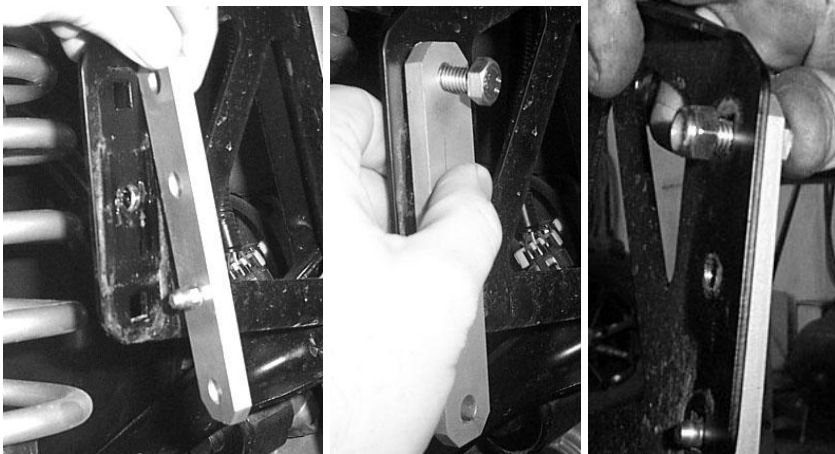


11) Using a 5/16 drill bit, drill a larger hole where the grease fitting was attached to the frame.

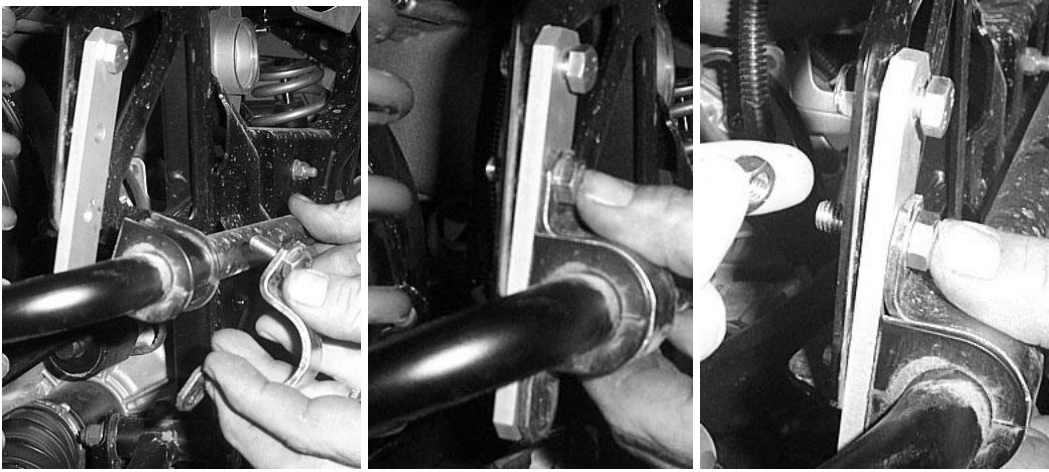


12) Now connect the sway bar bracket to the frame using three 8x25mm hex bolts.

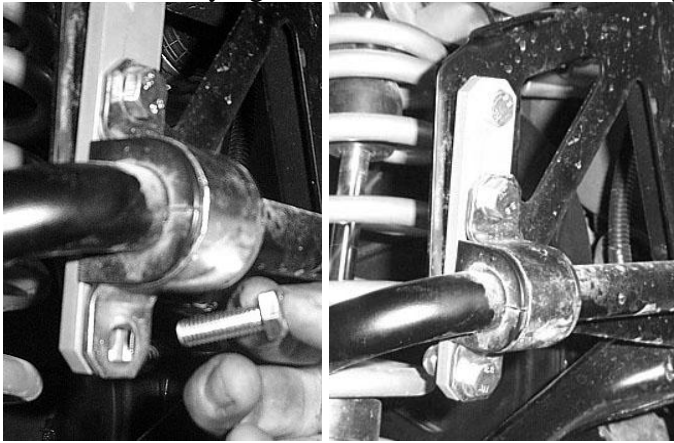
13) Start with the top hole first. Use one 8x25mm bolt and 10mm lock nut. Loosely fasten it.



14) Next connect the sway bar and factory sway bar bracket to the new sway bar relocation bracket. Insert the 10x85mm hex bolt through the factory sway bar bracket into the new hole you drilled where the grease fitting use to be located.



15) Now insert the third 8x25mm hex bolt through the sway bar bracket and the new sway bar relocation bracket. Securely tighten all three lock nuts once they are all in place.



16) Fasten the sway bar nut on the sway bar connecting rod. Place the wheels back on the UTV and torque all lugs to factory specifications.

**Thank You**  
**For Choosing**







### **High Lifter Lifetime Warranty**

From the beginning, High Lifter has engineered and manufactured some of the toughest, most durable products on the market. That's why this product comes with a Lifetime Warranty. It's our promise that High Lifter will never let you down.

- The **Lifetime Warranty** covers products sold to the original purchaser only and is not transferable. The term of the warranty is for the lifetime of the vehicle in question.
- Normal wear and tear items and finishes, such as, but not limited to: Heim joints, tie rod ends, ball joints, bearings, seals, bushings, bushing sleeves, zinc plating , powder coating, or chipping and discoloration of any finish is not covered.
- High Lifter will ship the replacement product after the returned product has been inspected by High Lifter staff.
- The warranty shall not include claims for damages, installation time or labor charges, economic losses, inconvenience, transportation, towing, down time, direct or indirect or consequential damages or delay resulting from any defect.
- The warranty does not apply to products that have been improperly applied or improperly installed.