



Yamaha 450 Lift Kit Installation Instructions

Read before Installation

This product is designed for use on ATVs and/or RUVs to increase ground clearance and fender clearance. Purchasers should be aware that use of this product may increase the frequency of required maintenance, part wear, and will raise the center of gravity on your ATV and/or RUV, increasing risk of roll-over, injury and death on all types of terrain. It is your responsibility to always inform other operators and passengers of this vehicle about the added risks.

High Lifter Products, products are designed to best fit users ATV/RUV under stock conditions. Adding, modifying, or fabricating any OEM or aftermarket parts will void warranty. High Lifter Products, products could interfere with other aftermarket accessories. If the user has aftermarket products on machine, contact High Lifter Products to verify that they will work together. Adding aftermarket suspension components and/or more aggressive tires can cause breakage of other OEM driveline components such as differentials, axles or drive shafts.

We recommend that wider tires and/or wheel spacers be used to achieve a wider stance and to improve stability of the ATV and/or RUV. Riders should be advised that the handling characteristics of a taller ATV and/or RUV are different and require extra care when riding, particularly on side hills or off-camber situations. If you further raise the center of gravity by adding taller tires, heavy loads to racks or seats, or by any other means, the ATV and/or RUV must be operated with even more care, at slower speeds and on relatively flat ground. All turns should be done at a slow speed, even on level ground.

Operation of an ATV and/or RUV with or without modified suspension components, while or shortly after consuming alcohol or drugs, subjects the rider to the risk of serious bodily harm or possible death. This risk is compounded if the rider does not wear an approved helmet and other safety gear. High Lifter urges that all approved safety gear be worn when riding an ATV and/or RUV as a driver or passenger.

By purchasing and installing High Lifter Products, products, user agrees that should damages occur, High Lifter Products will not be held responsible for loss of time, use, labor fees, replacement parts, or freight charges. High Lifter Products will not be held responsible for any direct, indirect, incidental, special, or consequential damages that result from any product purchased from High Lifter Products. The total liability of seller to user for all damages, losses, and causes of action, shall not exceed the total purchase price paid for the product that gives rise to the claim.

Dealers and other Installers

You are responsible for informing your customer and end user of the information contained above and the increased potential hazards of operating an ATV and/or RUV equipped with modified suspension components. If you install any suspension modifying components, it is your responsibility to also install the warning label prominently in view of the driver and in prominent view of the driver and passenger on RUVs and multi-passenger ATVs. They should also be instructed to notify anyone operating the vehicle, as well as any passengers, that said vehicle is modified.

As discussed above, it is critically important that they be instructed in the need for slower speed operation, regardless of terrain, after this lift kit is installed.

Parts Diagram

**Front Lift Bracket
(2ea)**



**Front Support Bracket
(2ea)**



**Front Small Support
Bracket (4ea)**



**10mm Washer
(2ea)**



**10mm Lock
Nut (8ea)**



**6mm Lock Nut
(4ea)**



**Rear Lift Bracket
(2ea)**



6 x 40 Bolt (4ea)



Large Spacer (2ea)



Medium Spacer (2ea)



**10 x 60 Bolt
(8ea)**



Small Spacer (4ea)

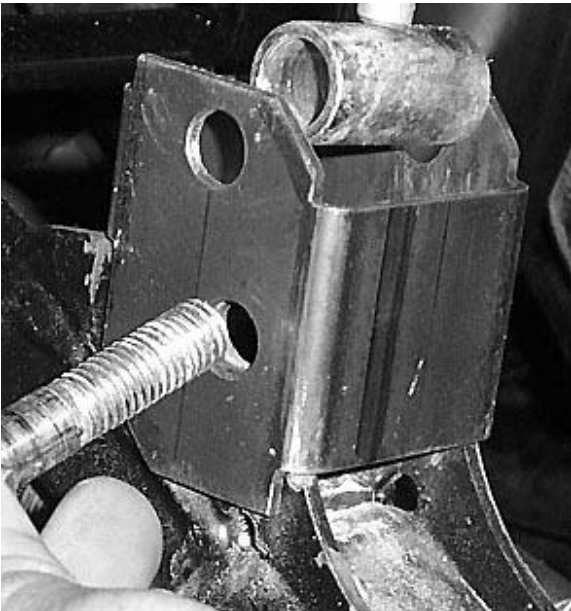


Front Lift Installation

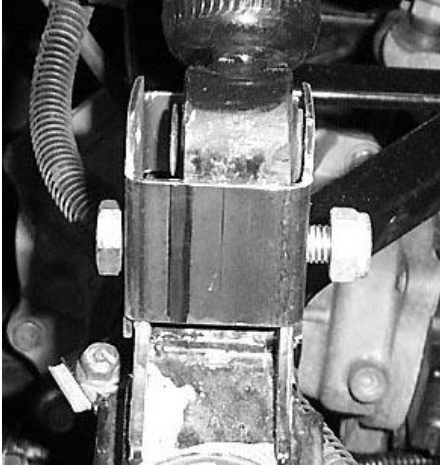
- 1) Place ATV transmission in park. Place jack under center of ATV front end and lift until front wheels clear the ground. Be careful to support ATV properly so that it is securely supported so that A-arms and shocks can droop to full extension.
- 2) Remove front wheels.
- 3) Remove the bottom of the front shocks.



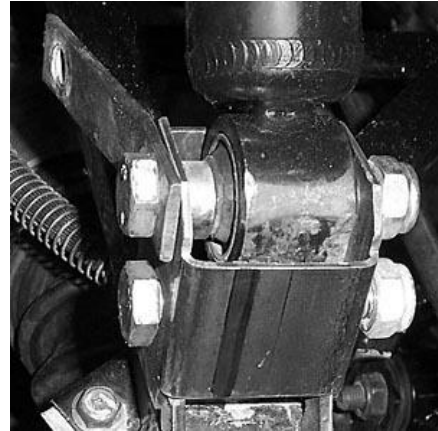
- 4) Place the front lift tube bracket onto the front shock mount. Insert the Spacer between the shock mount tabs.



- 5) Connect the Front lift tube bracket to the frame using the 10mm x 60mm Hex bolts and 10mm lock nuts.
- 6) Next, insert the bottom of the shock into the top of the tube bracket. Place the small spacer to the inside of the tube bracket next to the shock.



- 7) Insert the 10mm x 60mm hex bolt through the support bracket and then through the tube bracket, spacer and shock until it goes all the way through. Secure it using the 10mm lock nut



- 8) Connect the support bracket to the A-arm using the two smaller support bracket and 6mm x 40mm hex bolts and 6mm lock nuts.

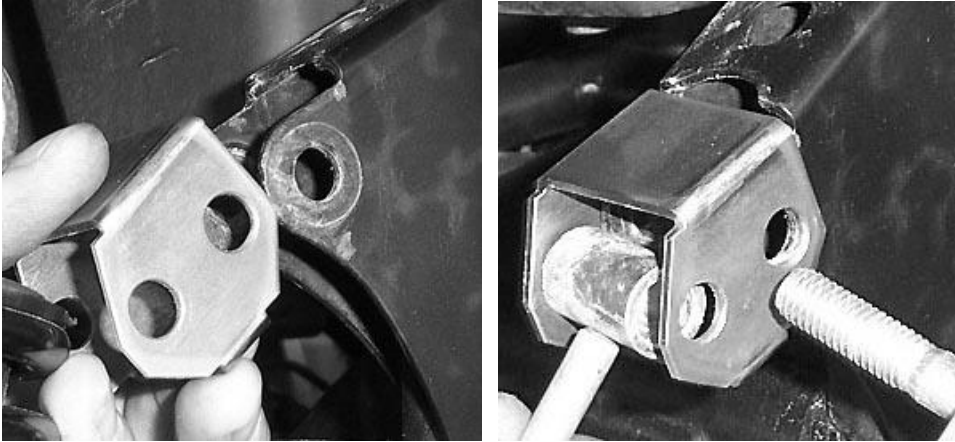


- 9) Repeat steps for opposite side.
- 10) Lower the jack and place the wheels back on the ATV.

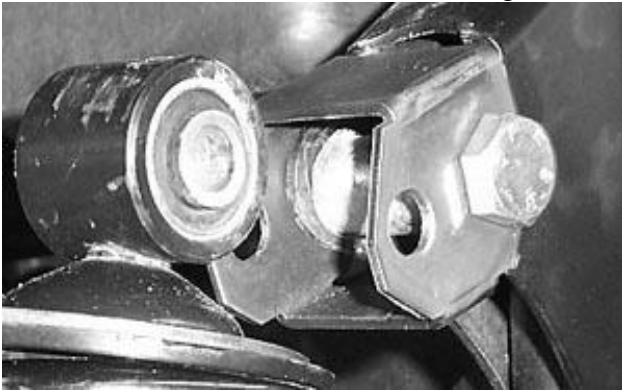
Rear Lift Installation

1. Place ATV transmission in park. Place jack under center of ATV rear end and lift until rear wheels clear the ground. Be careful to support ATV properly so that it is securely supported so that A-arms and shocks can droop to full extension.
2. Remove rear wheels.

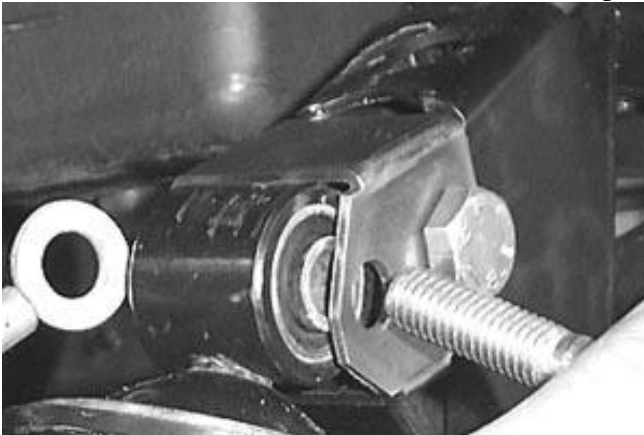
3. Remove top of the rear shocks.
4. Place the Tube bracket on the rear shock mount tabs, while inserting the large spacer between the shock mount tabs.



5. Secure the bracket to the ATV using the 10mm x 60mm hex bolt and 10mm lock nut.



6. Next, insert the shock into the bottom of the tube bracket.
7. Insert the 10mm flat washer between the top of the shock and the inside of the tube bracket.



8. Fasten the shock to the rear tube bracket using the 10mm x 60mm hex bolt and 10mm lock nuts provided in the kit.



9. Repeat steps for opposite side.

10. Place all wheels back on the ATV; torque all lugs to factory specifications.

Thank You

For choosing





High Lifter Lifetime Warranty

From the beginning, High Lifter has engineered and manufactured some of the toughest, most durable products on the market. That's why this product comes with a Lifetime Warranty. It's our promise that High Lifter will never let you down.

- The **Lifetime Warranty** covers products sold to the original purchaser only and is not transferable. The term of the warranty is for the lifetime of the vehicle in question.
- Normal wear and tear items and finishes, such as, but not limited to: Heim joints, tie rod ends, ball joints, bearings, seals, bushings, bushing sleeves, zinc plating, powder coating, or chipping and discoloration of any finish is not covered.
- High Lifter will ship the replacement product after the returned product has been inspected by High Lifter staff.
- The warranty shall not include claims for damages, installation time or labor charges, economic losses, inconvenience, transportation, towing, down time, direct or indirect or consequential damages or delay resulting from any defect.
- The warranty does not apply to products that have been improperly applied or improperly installed.