



Yamaha Viking Lift Kit Installation Instructions

Read before Installation

This product is designed for use on ATVs and/or RUVs to increase ground clearance and fender clearance. Purchasers should be aware that use of this product may increase the frequency of required maintenance, part wear, and will raise the center of gravity on your ATV and/or RUV, increasing risk of roll-over, injury and death on all types of terrain. It is your responsibility to always inform other operators and passengers of this vehicle about the added risks.

High Lifter Products, products are designed to best fit users ATV/RUV under stock conditions. Adding, modifying, or fabricating any OEM or aftermarket parts will void warranty. High Lifter Products, products could interfere with other aftermarket accessories. If the user has aftermarket products on machine, contact High Lifter Products to verify that they will work together. Adding aftermarket suspension components and/or more aggressive tires can cause breakage of other OEM driveline components such as differentials, axles or drive shafts.

We recommend that wider tires and/or wheel spacers be used to achieve a wider stance and to improve stability of the ATV and/or RUV. Riders should be advised that the handling characteristics of a taller ATV and/or RUV are different and require extra care when riding, particularly on side hills or off-camber situations. If you further raise the center of gravity by adding taller tires, heavy loads to racks or seats, or by any other means, the ATV and/or RUV must be operated with even more care, at slower speeds and on relatively flat ground. All turns should be done at a slow speed, even on level ground.

Operation of an ATV and/or RUV with or without modified suspension components, while or shortly after consuming alcohol or drugs, subjects the rider to the risk of serious bodily harm or possible death. This risk is compounded if the rider does not wear an approved helmet and other safety gear. High Lifter urges that all approved safety gear be worn when riding an ATV and/or RUV as a driver or passenger.

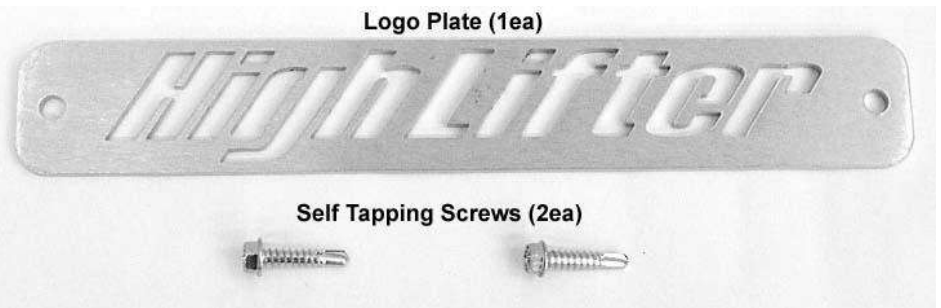
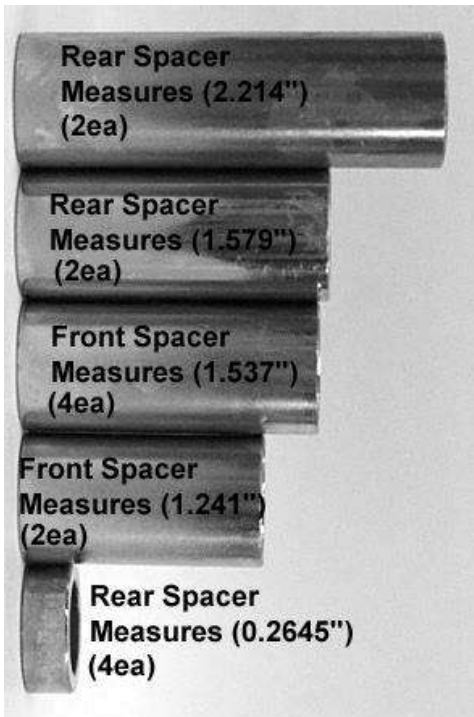
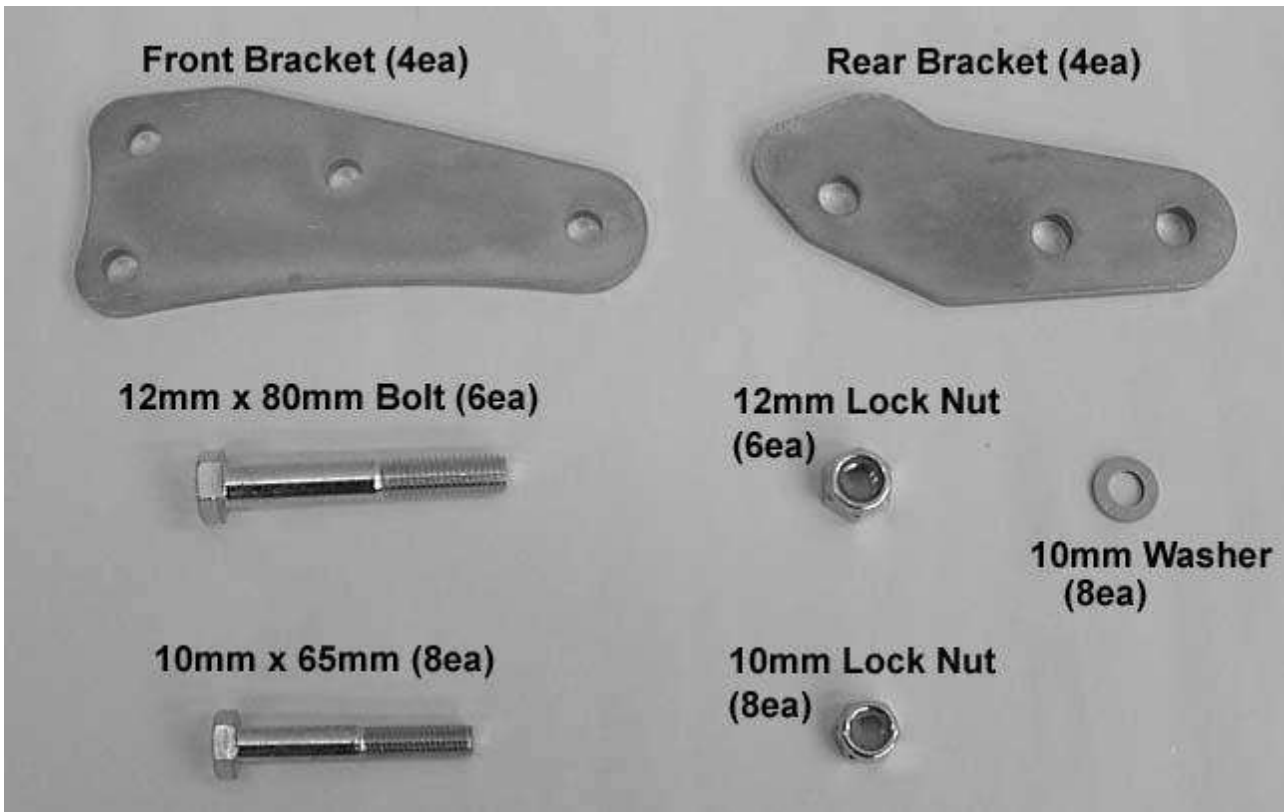
By purchasing and installing High Lifter Products, products, user agrees that should damages occur, High Lifter Products will not be held responsible for loss of time, use, labor fees, replacement parts, or freight charges. High Lifter Products will not be held responsible for any direct, indirect, incidental, special, or consequential damages that result from any product purchased from High Lifter Products. The total liability of seller to user for all damages, losses, and causes of action, shall not exceed the total purchase price paid for the product that gives rise to the claim.

Dealers and other Installers

You are responsible for informing your customer and end user of the information contained above and the increased potential hazards of operating an ATV and/or RUV equipped with modified suspension components. If you install any suspension modifying components, it is your responsibility to also install the warning label prominently in view of the driver and in prominent view of the driver and passenger on RUVs and multi-passenger ATVs. They should also be instructed to notify anyone operating the vehicle, as well as any passengers, that said vehicle is modified.

As discussed above, it is critically important that they be instructed in the need for slower speed operation, regardless of terrain, after this lift kit is installed.

Parts Diagram



Installation Instructions

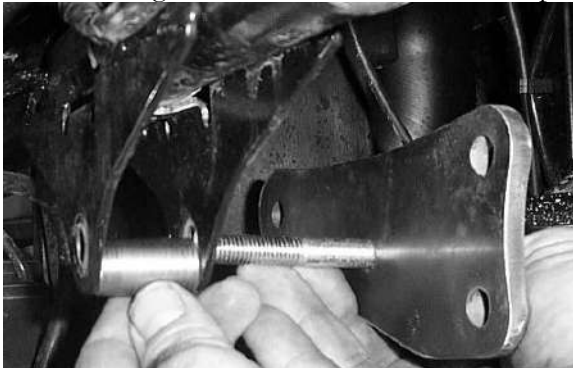
- 1) Place UTV transmission in park. Place jack under center of UTV front end and lift until front wheels clear the ground. Be careful to support ATV properly so that it is securely supported so that A-arms and shocks can droop to full extension.
- 2) Remove front wheels.
- 3) Remove the tops of the front shocks from the mounts.



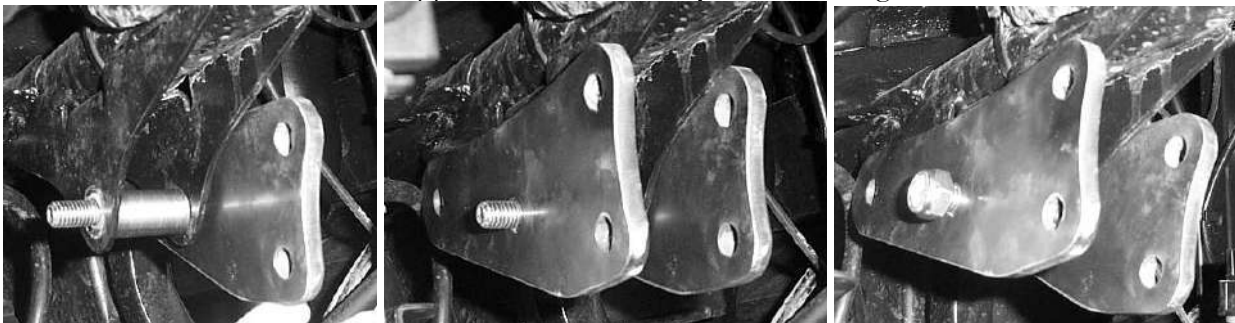
- 4) Connect two of the front lift brackets to the UTV. Insert a 10x65mm bolt through the lift bracket in the center hole.



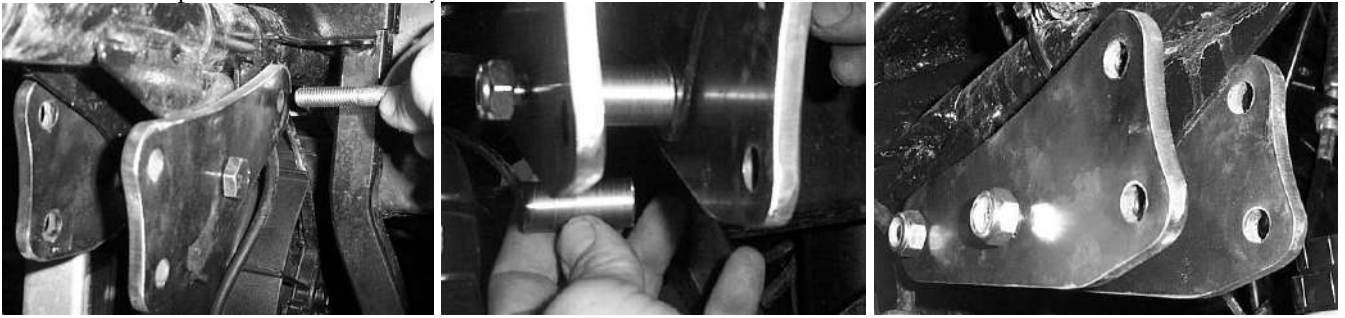
- 5) Insert it through the stock shock mount, but place a (1.241") spacer between the shock tabs.



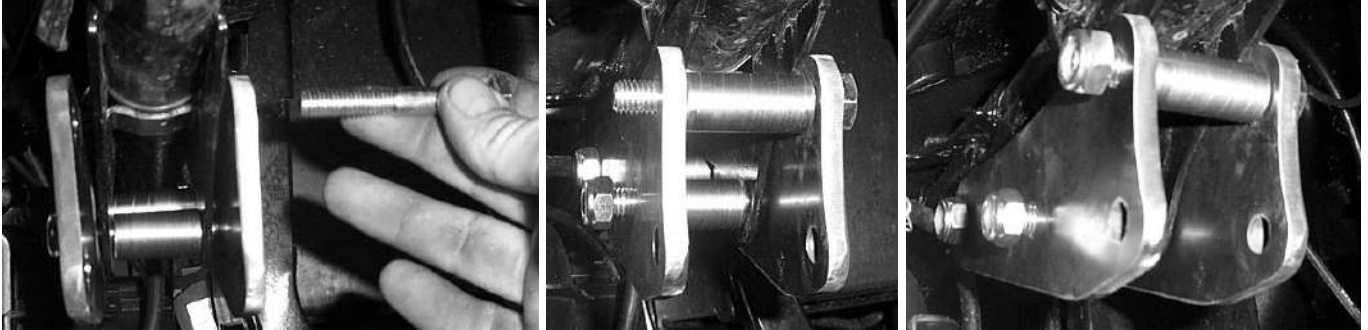
- 6) Place another lift bracket on the opposite side and loosely fasten it using a 10mm lock nut.



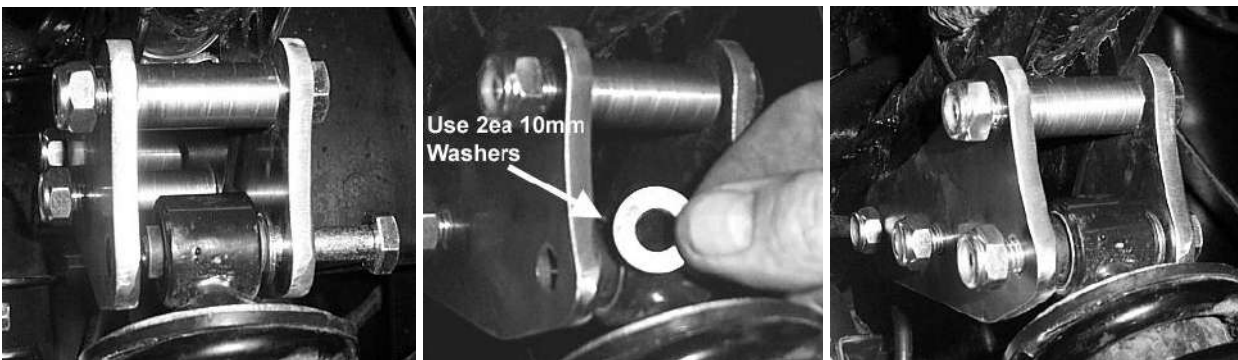
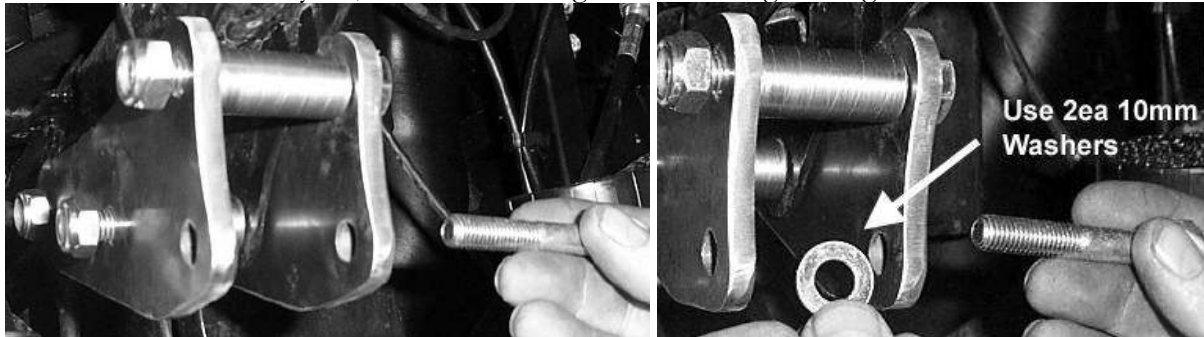
- 7) Next insert a **(1.537")** spacer to the back, between the lift brackets. Insert a 10x65mm bolt through the brackets and spacer. Fasten loosely with a 10mm lock nut.



- 8) To the front of the lift brackets insert a **(1.537")** spacer between the lift brackets. Insert a 10x65mm bolt through the brackets and spacer. Fasten loosely using a 10mm lock nut.



- 9) Connect the shock to the brackets. Insert a 10x65mm bolt through the bracket, place 2ea 10mm washer on either side of the shock eyelet, insert bolt through and fasten tight using a 10mm lock nut.



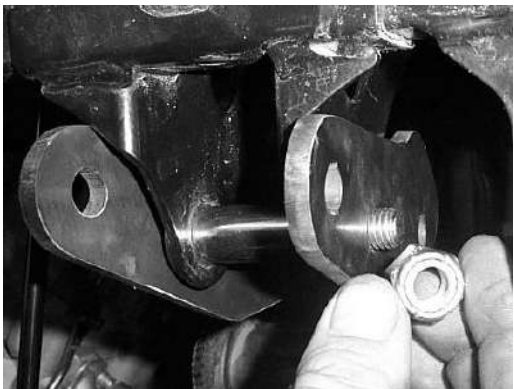
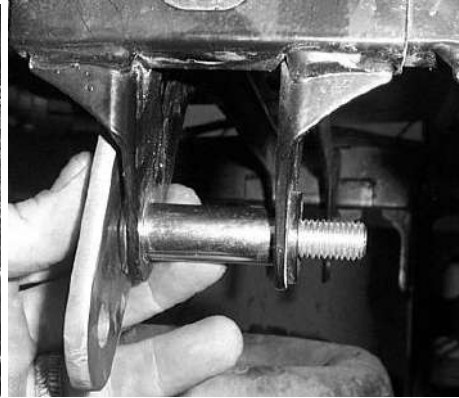
- 10) Once all the brackets and bolts are in place fasten tight.
11) Repeat steps for the opposite side.
12) Place wheels back on the UTV, torque all lugs to factory specifications.

Rear Lift

- 1) Place jack under the center of the UTV, just forward of where the rear drive shaft connects to the engine, and lift until the weight is off the suspension. Be careful to secure the UTV properly so it is stable on the jack.
- 2) Remove the rear wheels.
- 3) Disconnect the top of the shocks from both sides of the UTV.



- 4) Connect two rear lift brackets to the frame using a 12x80mm bolt, (spacer and 12mm lock nut.
- 5) Place the bracket so that the wider end of the bracket is to the top of the frame. Place **(1.579")** spacer between the shock mount tabs.



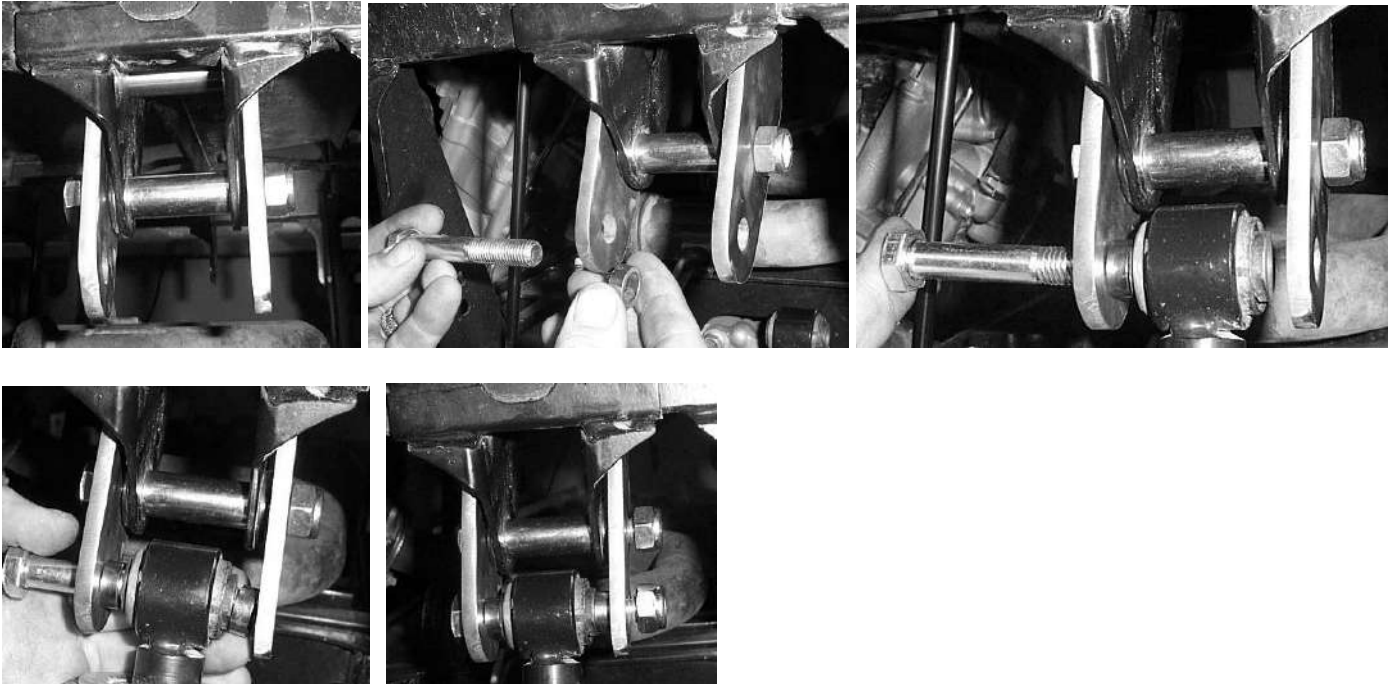
- 6) Let the brackets rotate down so that you can insert (2.214") spacer above the stock shock mounting location between the frame.



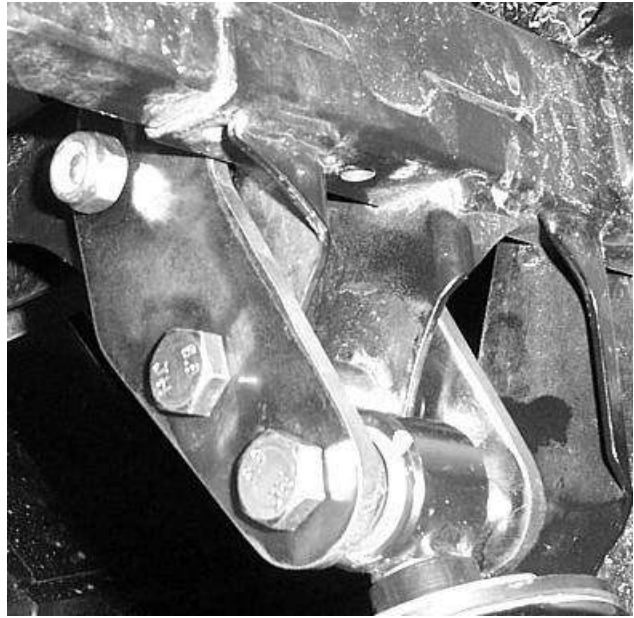
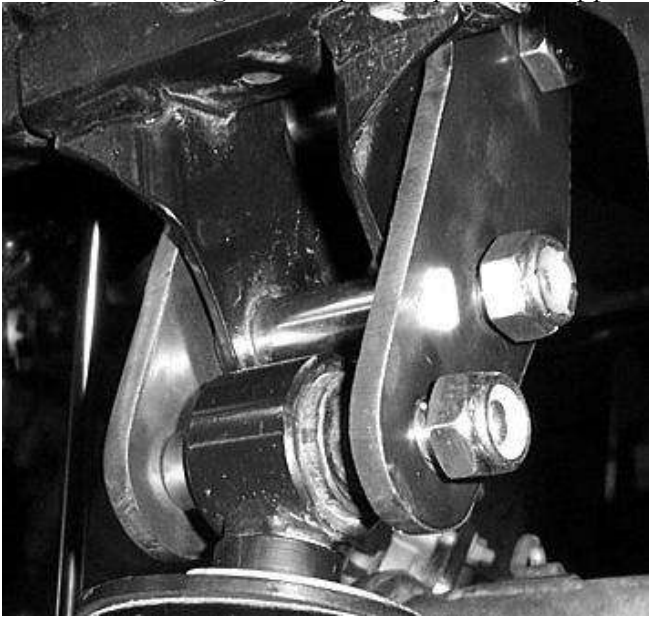
- 7) Rotate the brackets back up and insert a 12x80mm bolt through the brackets and spacer.



- 8) Attach the top of the shock to the lift brackets by placing a (0.2645") spacer on either side of it between the sock and brackets. Use a 12x80mm hex bolt and 12mm lock nut.



9) Fasten all bolts tight and repeat steps for the opposite side.



10) Place wheels back on UTV and torque lugs to factory specifications.

Logo Plate Installation

1. Measure the tail gate and find the center.



2. Once you find the center, mark it.



3. Take the logo plate and center it on the mark and mark the holes for the self tapping screws.



4. Using the self tapping screws provided, attach the logo plate to the tail gate.



Thank You
For choosing
High Lifter
PRODUCTS



High Lifter Lifetime Warranty

From the beginning, High Lifter has engineered and manufactured some of the toughest, most durable products on the market. That's why this product comes with a Lifetime Warranty. It's our promise that High Lifter will never let you down.

- The **Lifetime Warranty** covers products sold to the original purchaser only and is not transferable. The term of the warranty is for the lifetime of the vehicle in question.
- Normal wear and tear items and finishes, such as, but not limited to: Heim joints, tie rod ends, ball joints, bearings, seals, bushings, bushing sleeves, zinc plating, powder coating, or chipping and discoloration of any finish is not covered.
- High Lifter will ship the replacement product after the returned product has been inspected by High Lifter staff.
- The warranty shall not include claims for damages, installation time or labor charges, economic losses, inconvenience, transportation, towing, down time, direct or indirect or consequential damages or delay resulting from any defect.
- The warranty does not apply to products that have been improperly applied or improperly installed.