



POLARIS SPORTSMAN XP

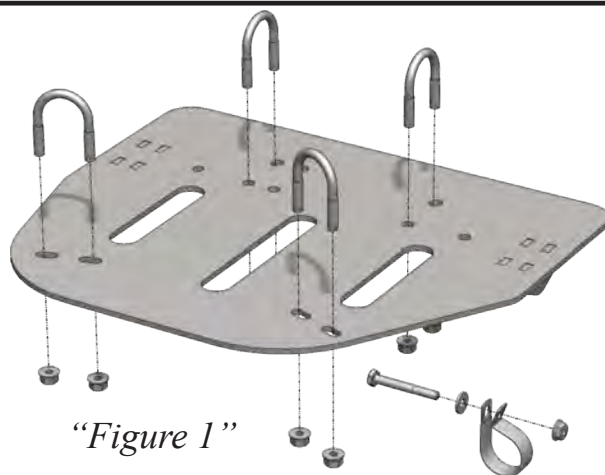
Plow Mount

PART # 105075

Hardware Kit: HK-113

Kit Components:

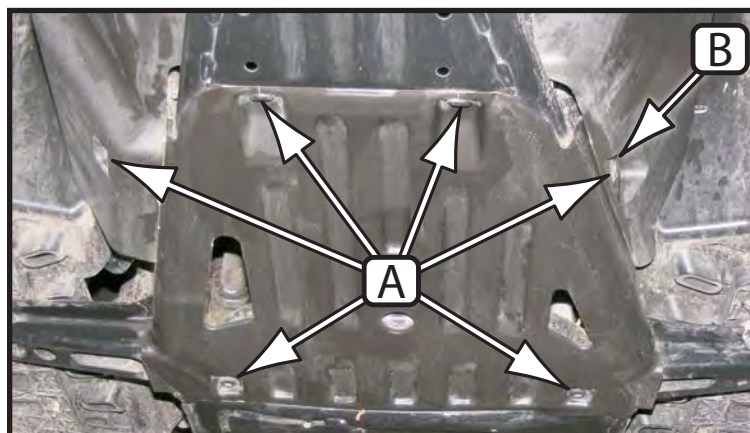
Qty.	Part Description
1.....	Plow Mount Plate
1.....	1 1/4" Vinyl-Coated Loop Clamp
4.....	5/16-18 x 1-3/8" x 2" U-Bolt
8.....	5/16-18 Hex Flanged Lock Nut
1.....	1/4-20 x 2" Hex Cap Screw
1.....	1/4-20 Hex Serrated Flanged Lock Nut
1.....	1/4 Flat Washer, SAE



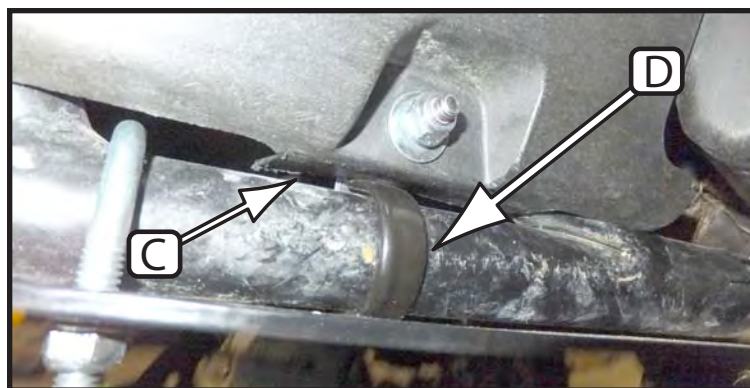
"Figure 1"

INSTALLATION INSTRUCTIONS:

1. Remove 4 frame bolts and 2 inner fender plastic fasteners from middle skid plate. (Shown in Figure 2)
2. Install P-Clip to tube frame in location (B) as shown in Figure 3 (D). Trimming for the tab (C) will be required in order to fully install P-Clip. Install using 1/4" hardware provided with the mount.
3. Place u-bolts on machine frame as shown in Figure 4.
4. Install mount plate loosely to frame using the u-bolts and 5/16" flanged lock nuts as shown in Figure 5.
5. Adjust so plate is centered on machine.
6. Tighten down all nuts. (Make sure u-bolt ends are even.)
7. See ATV Plow Tube System instruction manual for tube attachment.



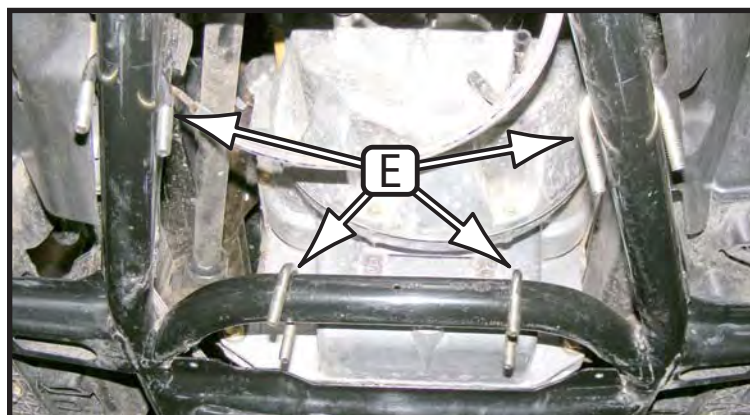
"Figure 2" Skid Plate Removal



"Figure 3" P-Clip Install



"Figure 5" Fully Installed



"Figure 4" U-Bolt Install



Discover other winches on our website.