



CAN-AM DEFENDER

PLOW MOUNT

Plow Mount

PART # 105780

Hardware Kit: HK-162

Kit Components:

Qty.	Part Description
------	------------------

- | | |
|--------|---------------------------------|
| 1..... | Plow Mount Plate |
| 2..... | Plow Mount Nut Plate |
| 2..... | 3/8"-16 X 1" Hex Flange Bolt |
| 2..... | 5/16"-18 X 3/4" Hex Flange Bolt |
| 2..... | 5/16"-18 Hex Flange Nylok Nut |

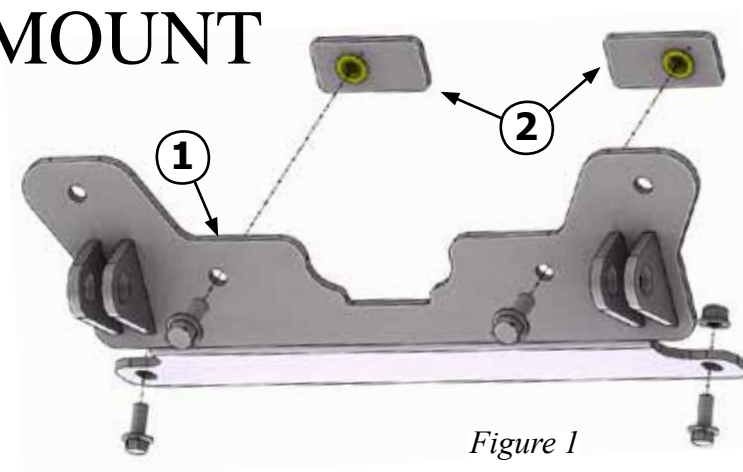


Figure 1

INSTALLATION INSTRUCTIONS:

1. Locate the two holes (A) on the bottom frame. Attach the mount plate to the frame inserting the two 5/16" hex bolts through the mount and up into the frame. Assemble with the 5/16" Nuts (**DO NOT TIGHTEN AT THIS TIME**)
2. Take the rectangular nut plates and insert them into holes (B) behind the stock bumper as shown in Figures 2&3. Align the mount plate and the nut plates and attach the 3/8" Bolts. (**TIGHTEN DOWN A&B AT THIS TIME**).

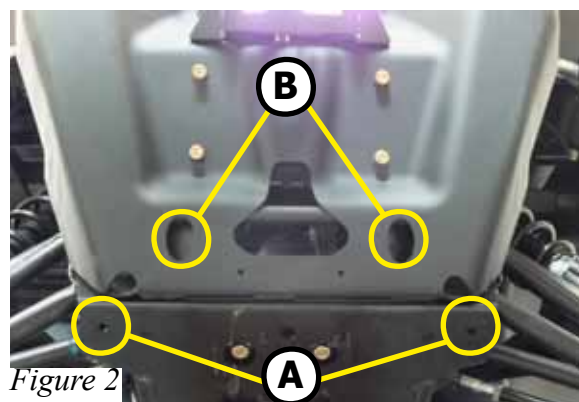


Figure 2

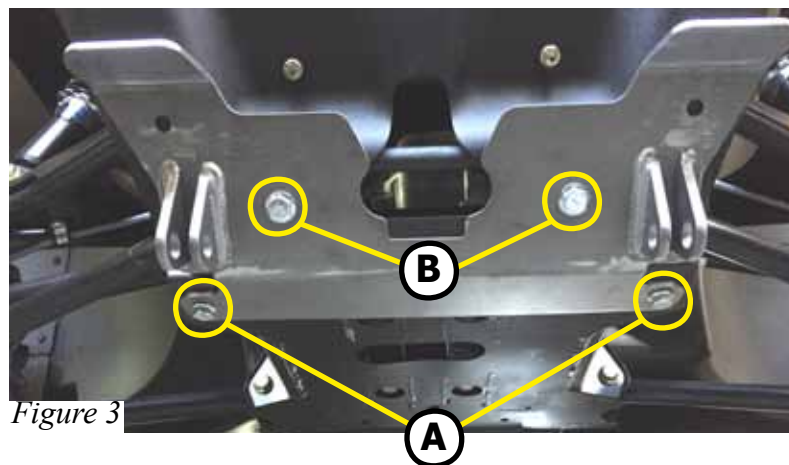


Figure 3

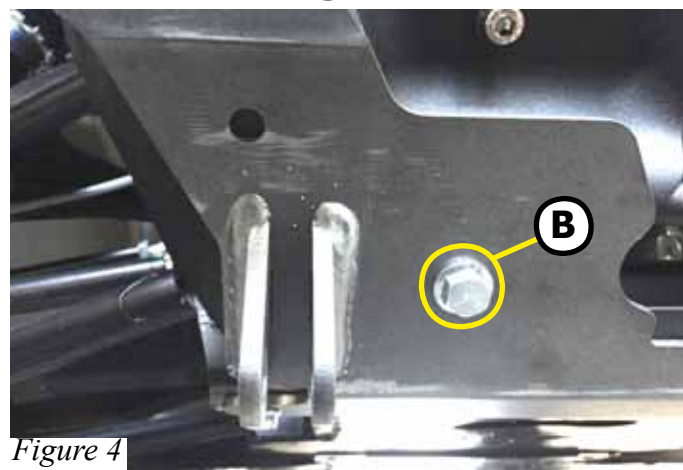


Figure 4



Discover other winches on our website.