



COMFORT DROP MOUNTS/MINI BOARDS for GL 1800 4328

PARTS INCLUDED

- 1 Right Mini Board and Comfort Drop Mount
- 1 Left Mini Board and Comfort Drop Mount
- 1 Hardware Kit Containing:
 - 2 Cotter Pins
- 1 Installation Instructions

Please read and understand entire instructions before starting installation.

THANK YOU FOR CHOOSING KÜRYAKYN!

IN ORDER TO PROTECT YOU AND OTHERS FROM POSSIBLE INJURY AND/OR PROPERTY DAMAGE OR LOSS, PLEASE PAY CLOSE ATTENTION TO ALL INSTRUCTIONS, WARNINGS, CAUTIONS AND NOTICES REGARDING THE USE AND CARE OF THIS PRODUCT.

⚠ WARNING	THIS INDICATION ALERTS YOU TO THE FACT THAT IGNORING THE CONTENTS DESCRIBED HEREIN CAN RESULT IN POTENTIAL DEATH OR SERIOUS INJURY.
NOTICE	This indication alerts you to the fact that ignoring the contents described herein may negatively affect product performance and functionality.

NOTICE	IF INSTALLING THIS PRODUCT FOR ANOTHER PARTY, PLEASE MAKE SURE THEY RECEIVE THIS COPY OF THE INSTALLATION INSTRUCTIONS SO THEY ARE AWARE OF THE IMPORTANT INFORMATION CONTAINED IN THEM.
---------------	---

TOOLS SUGGESTED

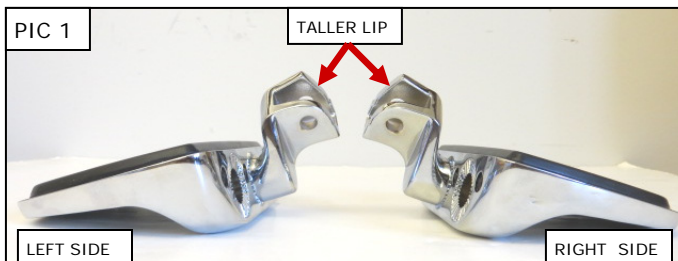
Needle Nose Pliers, Set of Hex Wrenches

STRICTLY OBSERVE THE FOLLOWING GUIDELINES IN ORDER TO USE THE PRODUCT PROPERLY AND AVOID POTENTIALLY DANGEROUS ACCIDENTS.

STEP 1 Read and understand all steps in the instructions before starting the installation. Park the motorcycle on a hard, level surface and turn off the ignition. Let cool.

⚠ WARNING	YOU WILL BE WORKING AROUND THE ENGINE AND EXHAUST SYSTEM DURING INSTALLATION. ENSURE THAT THE ENGINE AND EXHAUST SYSTEM HAVE FULLY COOLED TO PREVENT INJURY.
------------------	---

STEP 2 Determine the left from the right (sitting on bike) Drop Mount. PIC 1 The taller, sharp corner lip goes towards the front of the bike.



-cont.-

STEP 3 Remove the stock pegs from the OEM mounts by removing the cotter pin and washer from the bottom of the mounting pin. PIC 2 Carefully remove the pin, watching how the spring is connected to the peg and the hole in the mount. PIC 3 Keep all these parts except the cotter pin, they will be reused.

STEP 4 Reconnect the new Comfort Drop Mount and Mini Board to the mount, making sure that the spring is in the proper position. Drop the mounting pin back into position and secure with the OEM washer and included cotter pin. PIC 4 Check to make sure that your peg pivots up freely.

WARNING FOOTPEGS MUST BE INSTALLED SO THEY WILL FOLD UPWARD IF HIT BY ANY OBJECT. FAILURE TO ADJUST THE FOOTPEGS TO OPERATE IN THIS MANNER COULD RESULT IN SERIOUS INJURY OR DEATH.

WARNING DO NOT USE THE REARWARD MOUNTING HOLE IN THE MINI BOARDS. USING THIS POSITION WILL MOVE THE BOARD TOO FAR FORWARD AND MAY ALLOW YOUR FOOT TO BECOME LODGED BETWEEN THE BOARD AND THE SHIFT LEVER. THIS MAY CAUSE LOSS OF CONTROL RESULTING IN SERIOUS INJURY OR DEATH.

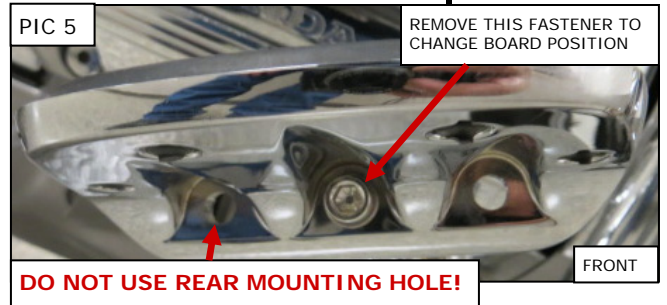
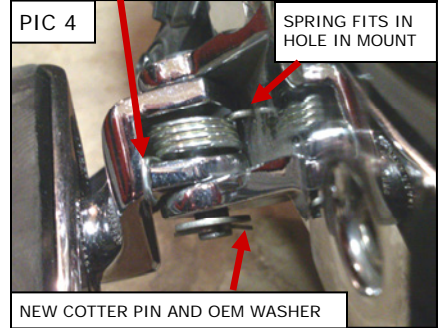
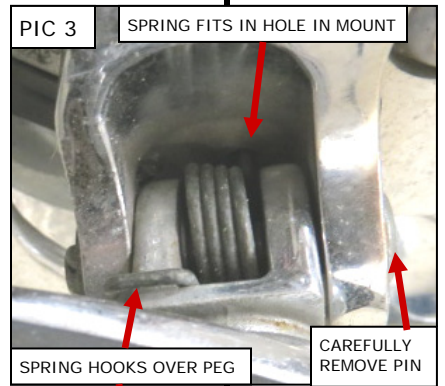
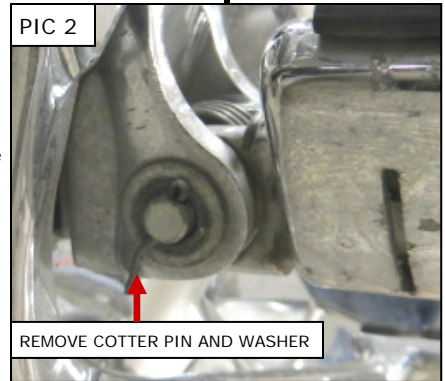
STEP 5 To change the position of the Mini Board rearward, remove the socket head cap screw that attaches the Mini Board to the splined adapter. PIC 5 Insert the socket head cap screw into the forward hole on the Mini Board and thread it into the splined adapter. Make sure the splines on the Mini Board are engaged on the splines on the adapter in the desired position and tighten securely.

STEP 6 To change the tip-up or tip-down position of the Mini Boards, loosen the socket head cap screw far enough to allow the splines on the Mini Board and adapter to disengage. Move the Mini Board to the desired position, and making sure the splines on the board and adapter are engaged in that position, tighten the socket head cap screw securely.

NOTE: If the Mini Boards do not seem parallel after tightening in the desired orientation, they can be fine tuned by loosening the two footpeg mount fasteners and rotating the peg mount forward or backward to achieve the desired position. PIC 6

WARNING IT IS THE INSTALLERS RESPONSIBILITY TO ENSURE THERE IS SUFFICIENT CORNERING CLEARANCE BEFORE THE MOTORCYCLE IS RIDDEN. INSUFFICIENT CORNERING CLEARANCE MAY CAUSE LOSS OF CONTROL RESULTING IN SERIOUS INJURY OR DEATH.

NOTICE It is the installer's responsibility to ensure that all of the fasteners (including pre-assembled) are tightened before operation of the motorcycle. Küryakyn will not provide warranty coverage on products or components lost due to improper installation or lack of maintenance. Periodic inspection and maintenance are required on all fasteners.



Ride On!

COMFORT DROP MOUNTS/MINI BOARDS INSTALLATION