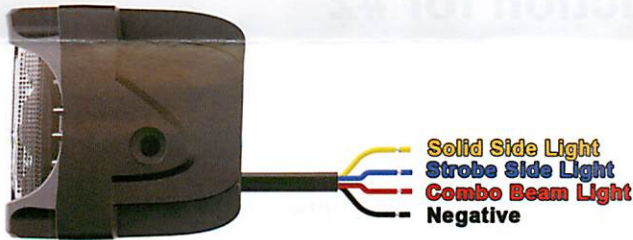


Wire Instruction

Tips 1:

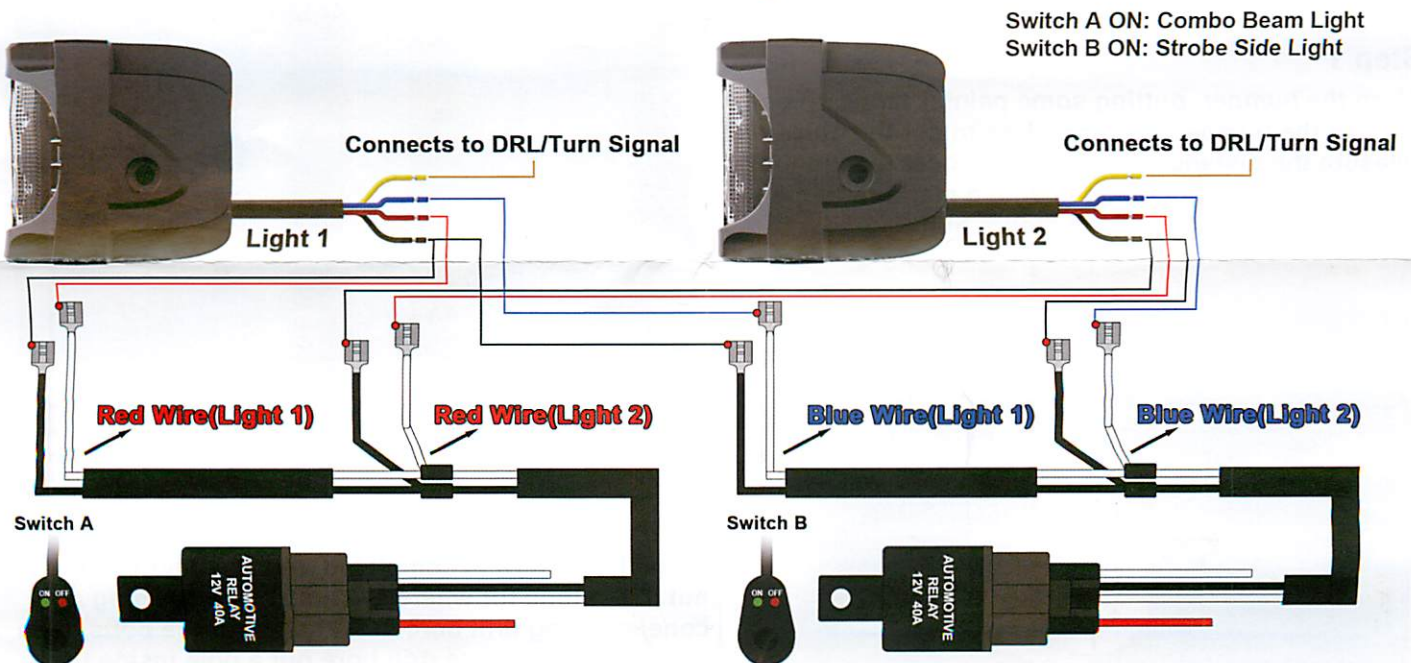
- 1.The wiring diagram of #1 and #2 are the same.
- 2.These side shooters have variety of wire methods, here we are showing you one of them, and may gives you some thoughts for the wiring.
- 3.The solid side light(Yellow Wire) could be connects to OEM turn signal as turn signal light or OEM DRL as daytime running Lights. It also could connects to any switch as you want.
Notes: Please turn off the strobe side light when you need the solid side light.
- 4.The strobe function(Blue Wire) is composed by multiple strobe modes automatically flashing in cycles, so it could not select one of the strobe modes to flash.



Tips 2:

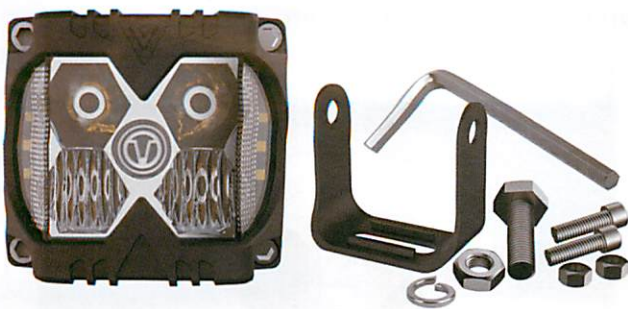
If connecting the yellow wire and blue wire together, then the side lights will only have strobe function, won't have solid function. So if need 3 functions to be separated, please connects these wires(Red, Blue, Yellow) to different position or different switches. (The switch harnesses are not included.)

Wire Diagram

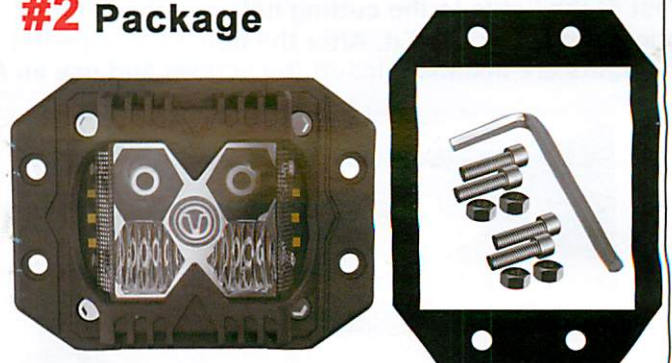


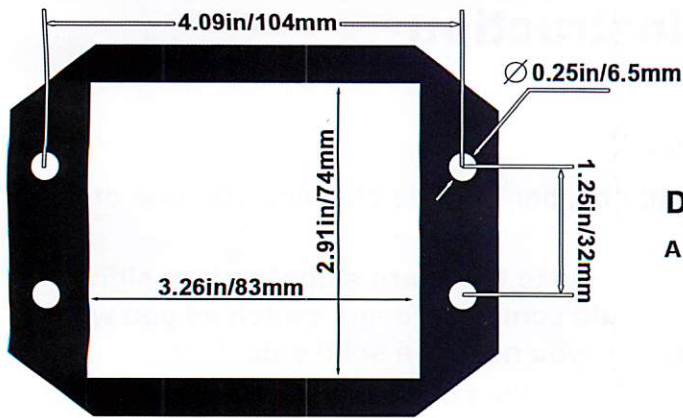
If you have any questions of these side shooter lights, please feel free to contact us with your order ID, we will do our best to help you.

#1 Package



#2 Package





Dimension for Drilling Hole

A template for Easier Drilling (#2 Flush Mount)

Installation Instruction for #2

Tools may need for Flush Mount Installation (Not Included)

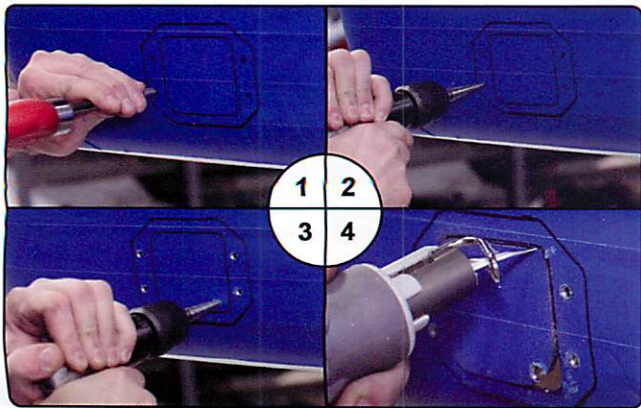
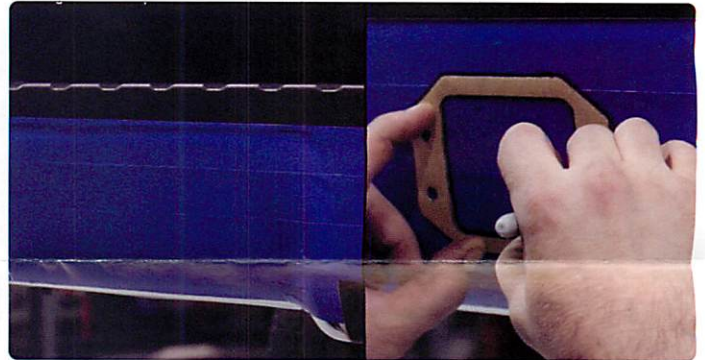
Painter Tape / Tape-Measurer / Marker Pen / Cone Drill / Stepping Drill / Reciprocating Saw / Barrel Grinder

Installation Tips:

1. Take a look at your bumper and decide where you want the lights and the spacing between them.
2. Look behind the bumper and make sure the spot you choose is clear directly behind the area you selected and you have enough clearance to insert the lights.

Step 1

Clean the bumper, putting some painter tapes on both sides of the bumper in preparation to cut the holes out, measure the distance to confirm the best location for the flush mount lights. Then using a markers to mark out the template of the flush mount light.



Step 2

Once the pattern is completed, use a center punch to put indentions for where the bolts will go. Using a cone/stepping drill bore out 4 holes for the bolts, then using the same cone drill bore out a hole inside the pattern to start cutting out a slot for the lights.

Step 3

Test fit the lights to the cutting holes to check for proper fit. If the lights not fit at first, it may require a barrel grinder to minor sand it. After the holes could be fit proper, remove the tapes from the bumper. Once both of the lights are installed, insert the screws and use an Alan wrench(included) to tighten.

