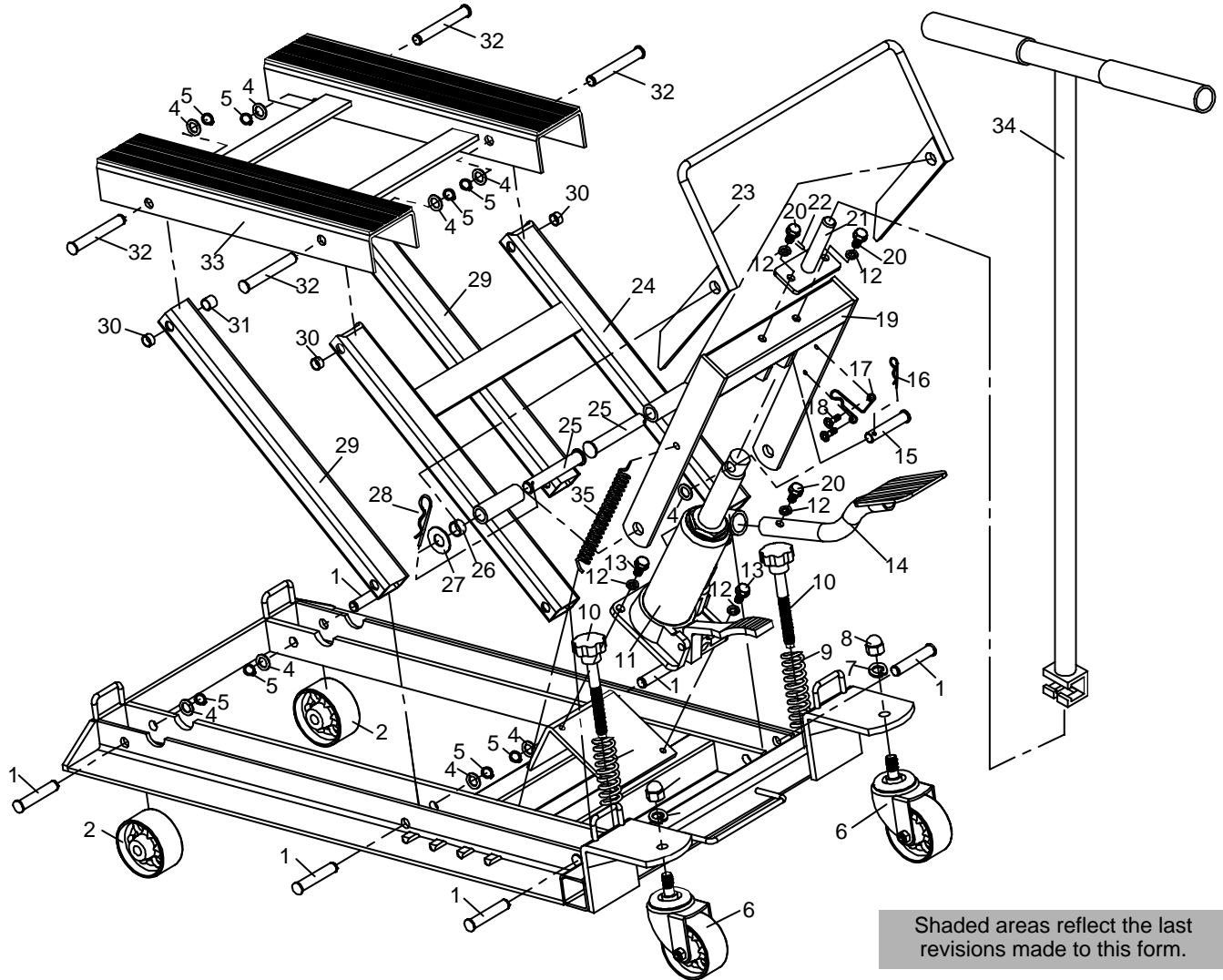


Motorcycle/ATV Lift

Max. Capacity: 1,500 lbs.



Shaded areas reflect the last revisions made to this form.

Parts List

Item No.	Qty.	Description	Item No.	Qty.	Description	Item No.	Qty.	Description
1	6	Pin Shaft	15	1	Pin Shaft	28	2	R-pin
2	2	Front Wheel	16	1	R-pin	29	2	Supporting Rod
4	11	Washer	17	1	Positioning Button	30	4	Bushing (Short)
5	10	Back Ring	18	2	Screw (M6 x 10)	31	2	Bushing (Long)
6	2	Rear Wheel	19	1	Pulling Frame	32	4	Pin Shaft
7	2	Spring Washer	20	3	Bolt (M8 x 12)	33	1	Bracket Assembly
8	2	Nut (M12)	21	1	Pushing Rod	34	1	Handle
9	2	Spring	22	1	Pin (4 x 25)	35	1	Spring
10	2	Leveling Screw	23	1	Lock Bar	PARTS INCLUDED BUT NOT SHOWN 2 Hold Down Strap		
11	1	Pump Assembly	24	1	Lifting Arm Assembly			
12	5	Spring Washer	25	2	Pin Shaft			
13	2	Bolt (M8 x 18)	26	2	Bushing			
14	1	Pump Pedal Assembly	27	2	Washer			

Replacement Kits for the Motorcycle/ATV Lift Assembly

Item No.	Qty.	Description
-------------	------	-------------

No. 522447 Handle includes:

34	1	Handle
----	---	--------

No. 522448 Caster Kit includes:

6	1	Rear Wheel
7	1	Spring Washer
8	1	Nut (M12)

No. 522449 Wheel Kit includes:

1	1	Pin Shaft
2	1	Front Wheel
4	1	Washer
5	1	Back Ring

No. 522450 Foot Pedal Kit includes:

12	1	Spring Washer
14	1	Pedal Assembly
20	1	Bolt (M8 x 12)

No. 531043 Hold Down Strap Kit includes:

2	1	Hold Down Strap
---	---	-----------------

No. 522451 Power Unit Kit includes:

4	1	Washer
11	1	Pump Assembly
12	2	Spring Washer
13	2	Bolt (M8 x 18)
15	1	Pin Shaft
16	1	R-pin

No. 522452 Lock Bar Kit includes:

17	1	Positioning Button
18	2	Screw (M6 x 10)
23	1	Lock Bar

No. 522453 Return Spring:

35	1	Spring
----	---	--------

No. 522454 Leveling Screw Kit includes:

9	1	Spring
10	1	Leveling Screw

Item No.	Qty.	Description
-------------	------	-------------

No. 522455 Platform Kit includes:

4	4	Washer
5	4	Back Ring
30	4	Bushing (Short)
31	2	Bushing (Long)
32	4	Pin Shaft
33	1	Bracket Assembly

No. 522456 Load Yoke Kit includes:

19	1	Pulling Frame
25	2	Pin Shaft
26	2	Bushing
27	2	Washer
28	2	R-pin

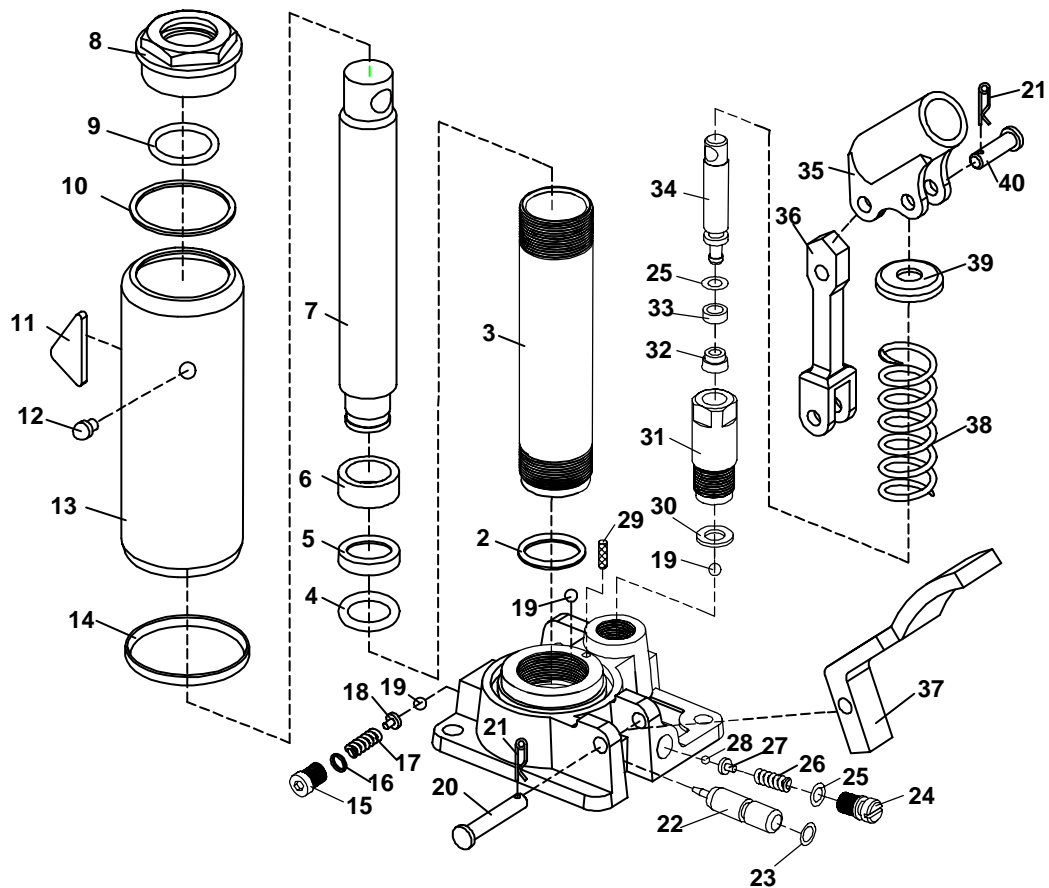
No. 522457 Riser Arms Kit includes:

1	4	Pin Shaft
4	8	Washer
5	8	Back Ring
24	1	Lifting Arm Assembly
29	2	Supporting Rod
30	4	Bushing (Short)
31	2	Bushing (Long)
32	4	Pin Shaft

No. 522501 Handle Mount Kit includes:

12	2	Spring Washer
20	2	Bolt (M8 x 12)
21	1	Pushing Rod
22	1	Pin (4 x 25)

Pump Assembly



Parts List

Item No.	Qty.	Description	Item No.	Qty.	Description	Item No.	Qty.	Description
2	1	Washer	16	1	Seal Washer	29	1	Filter Screen
3	1	Cylinder	17	1	Spring	30	1	Washer
4	1	O-ring	18	1	Ball Valve Base	31	1	Pump Body
5	1	Bowl Washer	19	3	Steel Ball (6.0)	32	1	Umbrella Ring
6	1	Piston Ring	20	1	Pin Shaft (8 x 45)	33	1	Back Ring
7	1	Piston Shank	21	4	R-pin	34	1	Piston
8	1	Top Nut	22	1	Release Valve	35	1	Handle Sleeve
9	1	O-ring	23	1	O-ring	36	1	Link
10	1	Seal Ring	24	1	Screw	37	1	Release Pedal
11	1	Iron Block	25	2	O-ring	38	1	Spring
12	1	Oil Plug	26	1	Spring	39	1	Spring Base
13	1	Reservoir	27	1	Ball Valve Base	40	3	Pin Shaft (8 x 28)
14	1	Seal Ring	28	1	Steel Ball (4.0)			
15	1	Screw						

Parts List & Operating Instructions

Replacement Kits for the Pump Assembly

Item	No.	Qty.	Description
------	-----	------	-------------

No. 521612 Seal Kit includes:

2	1	Washer
4	1	O-ring
5	1	Bowl Washer
6	1	Piston Ring
9	1	O-ring
10	1	Seal Ring
12	1	Oil Plug
14	1	Seal Ring
16	1	Seal Washer
19	2	Steel Ball (6.0)
23	1	O-ring
25	2	O-ring
29	1	Filter Screen
30	1	Washer
32	1	Umbrella Ring
33	1	Back Ring

No. 521613 Release Pedal Kit includes:

20	1	Pin Shaft (8 x 45)
21	1	R-pin
37	1	Pedal

No. 521614 Handle Socket Kit includes:

21	3	R-pin
35	1	Handle Sleeve
36	1	Link
40	3	Pin Shaft (8 x 28)

No. 521615 Pump Station Kit includes:

19	1	Steel Ball (6.0)
21	1	R-pin
25	1	O-ring
30	1	Washer
31	1	Pump Body
32	1	Umbrella Ring
33	1	Back Ring
34	1	Piston
38	1	Spring
39	1	Spring Base
40	1	Pin Shaft (8 x 28)

Item	No.	Qty.	Description
------	-----	------	-------------

No. 521616 Reservoir Kit includes:

8	1	Top Nut
9	1	O-ring
10	1	Seal Ring
11	1	Iron Block
13	1	Reservoir
14	1	Seal Ring
29	1	Filter Screen

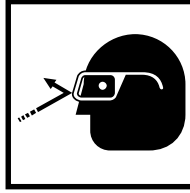
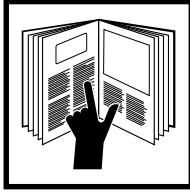
No. 521617 Ram Kit includes:

2	1	Washer
3	1	Cylinder
4	1	O-ring
5	1	Bowl Washer
6	1	Piston Ring
7	1	Piston Shank
9	1	O-ring
10	1	Seal Ring
14	1	Seal Ring
19	1	Steel Ball (6.0)
29	1	Filter Screen

No. 521618 Hardware Kit includes:

15	1	Screw
16	1	Seal Washer
17	1	Spring
18	1	Ball Valve Base
19	1	Steel Ball (6.0)
22	1	Release Valve
23	1	O-ring
24	1	Screw
25	1	O-ring
26	1	Spring
27	1	Ball Valve Base
28	1	Steel Ball (4.0)

Safety Precautions



⚠ CAUTION: Failure to follow these warnings could cause damage and / or failure of equipment, which may result in personal injury or property damage. To prevent personal injury and damage to equipment,

- Study and understand all safety precautions and operating instructions before using this cylinder. If the operator cannot read these instructions, operating instructions and safety precautions must be read and discussed in the operator's native language.
- Wear protective eyewear that meets the requirements of ANSI Z87.1 and OSHA.
- Inspect the jack before each use; do not use the jack if it's damaged, altered, or in poor condition.
- Use the jack for lifting purposes only.
- A load must never exceed the rated lifting capacity of the jack. Secure the load with tie down loops.
- Only use the jack on a hard, level surface.
- Stay clear of lifted loads, and the pinch points of the jack.
- Do not modify the jack or use adapters unless approved or supplied by OTC.
- Lower the jack slowly and carefully while watching the position of the jack saddle.
- Use only approved hydraulic fluid (Mobile DTE #13 or equivalent). The use of alcohol, hydraulic brake fluid, or transmission oil could damage seals and result in jack failure.

This guide cannot cover every situation, so always do the job with safety first.

Bleeding Air From The Jack

1. Depress and hold down the release pedal while operating the pump pedal 5–10 times.
2. Release air from the bottle jack by carefully lifting a corner of the fill plug on the side of the bottle jack.

Operating Instructions

To raise the jack, operate the pump pedal.

To lower the jack, SLOWLY depress the release pedal.

Parts List & Operating Instructions

Preventive Maintenance

IMPORTANT: The greatest single cause of failure in hydraulic units is dirt. Keep the motorcycle/ATV jack clean and well lubricated to prevent foreign matter from entering the system. If the jack has been exposed to rain, snow, sand, or grit, it must be cleaned before it is used.

1. Store the jack in a well-protected area where it will not be exposed to corrosive vapors, abrasive dust, or any other harmful elements.
2. To check the oil level, completely retract the ram. Remove the plug from the oil filler hole. The oil level should be within 1/4" of the filler plug hole. If necessary, add approved anti-wear hydraulic jack oil (Mobile DTE #13 or equivalent), and install the filler plug again. **IMPORTANT: The use of alcohol, hydraulic brake fluid, detergent motor oil, or transmission oil could damage the seals and result in jack failure.**
4. Inspect the jack before each use. Take corrective action if any of the following problems are found:
 - a. Cracked or damaged housing
 - b. Excessive wear, bending, or other damage
 - c. Leaking hydraulic fluid
 - d. Scored or damaged piston rod
 - e. Loose hardware
 - f. Modified or altered equipment

Troubleshooting Guide

Repair procedures must be performed in a dirt-free environment by qualified personnel who are familiar with this equipment.

Trouble	Cause	Solution
Erratic action	<ol style="list-style-type: none">1. Air in system2. Oil viscosity too high3. Internal leakage in cylinder4. Cylinder sticking or binding	<ol style="list-style-type: none">1. Refer to section titled "Bleeding Air from the Jack."2. Change to a lower viscosity oil.3. Replace worn packings. Look for excessive contamination or wear.4. Look for dirt, gummy deposits, leaks, misalignment, worn parts, defective packings.
Jack does not lift	<ol style="list-style-type: none">1. Release valve is open2. Low/no oil in reservoir3. Air-locked system4. Load is above capacity of jack5. Delivery valve and/or bypass valve not working correctly6. Packing worn out or defective	<ol style="list-style-type: none">1. Close release valve.2. Fill with oil and bleed system.3. Bleed system.4. Use correct equipment.5. Clean to remove dirt or foreign matter. Replace oil.6. Repair power unit.
Jack lifts only partially	<ol style="list-style-type: none">1. Too much or not enough oil	<ol style="list-style-type: none">1. Check oil level.
Jack advances slowly	<ol style="list-style-type: none">1. Pump not working correctly2. Leaking seals	<ol style="list-style-type: none">1. Repair power unit.2. Repair power unit or seals.
Jack lifts load, but doesn't hold	<ol style="list-style-type: none">1. Cylinder packing is leaking2. Valve not working correctly (suction, delivery, release, or bypass)3. Air-locked system	<ol style="list-style-type: none">1. Repair power unit or seals.2. Inspect valves. Clean and repair seat surfaces.3. Bleed system.
Jack leaks oil	<ol style="list-style-type: none">1. Worn or damaged seals	<ol style="list-style-type: none">1. Repair power unit or seals.
Jack will not retract	<ol style="list-style-type: none">1. Release valve is closed2. Locking bar engaged	<ol style="list-style-type: none">1. Open or clean release valve.2. Raise jack slightly, disengage locking bar.
Jack retracts slowly	<ol style="list-style-type: none">1. Cylinder damaged internally2. Link section is binding	<ol style="list-style-type: none">1. Send jack to OTC authorized service center for repair.2. Lubricate link section.