

# BMW F900R '20 / F900XR '20

REF 20389N

PROTECTOR MOTOR PRO / PRO CRASH PAD / PRO STURZPADS

## INSTRUCTIONS TO ASSEMBLE

Remove the fasteners that subject the chassis to the engine. Mount the protectors on each own side as the figure below shows. Tight the set, and place the caps. All the screws replaced, should be tightened to the torque specified in the oem maintenance manual for your motorcycle. if no torque specifications are provided in the oem maintenance manual, may be used 54Nm for all M10 screws.

Medium strength liquid thread-locker (i.e. "Loctite") should be used to secure all screws, bolts and nuts. All screws, bolts and nuts should be checked after driving the first 50 km to ensure that all are tightened to the proper torque.

FOR TO ASSEMBLE THE CRASH PADS, IF YOU ARE NOT A TRAINED MECHANIC, PLEASE CONTACT A SPECIALIST. MOTOPLASTIC, S.A. TAKES NO RESPONSIBILITY FOR DAMAGES CAUSED BY IMPROPER INSTALLATION. THE USE OF CRASH PADS DO NOT GUARANTEE A FULL PROTECTION IN CASE OF ACCIDENT. MOTOPLASTIC-PUIG DECLINE ANY RESPONSIBILITY IN CASE OF MOTORCYCLE DAMAGE.

ID.	DESCRIPTION	QTY.	REF.:
1	M10/150x90 DIN912 screw	1	TORNIAD912-0348
2	M10/150X110 DIN912 screw	1	M2TM10150110A9B
3	M10 washer	2	M2AM10DIN125AZB
4	PRO covers set	2	PROTECMOTPATIN-
5	Aluminum black spacer (55mm)	1	CASPAT04-0-0004
6	Aluminum black spacer (75mm)	1	CASPAT26-0-0026
7	Right metal support (Black)	1	PLATI387-1-0387
8	Left metal support (Black)	1	PLATI388-1-0388
9	M10 DIN6923 nut	2	TUERCAD6923M10Z
10	Aluminum black spacer (8mm)	1	CASQU453-0-1753
11	Aluminum black spacer (17mm)	1	CASQU452-0-1752
12	Aluminum black spacer (54mm)	2	CASQU455-0-1755
13	M12/175x110 DIN912 screw	2	M2TM12175110A9B
14	M12/175x100 DIN912 screw	2	M2TM12175100A9B
15	M12 DIN433 washer	2	ARANM12DIN433ZB

# BMW F900R '20 / F900XR '20

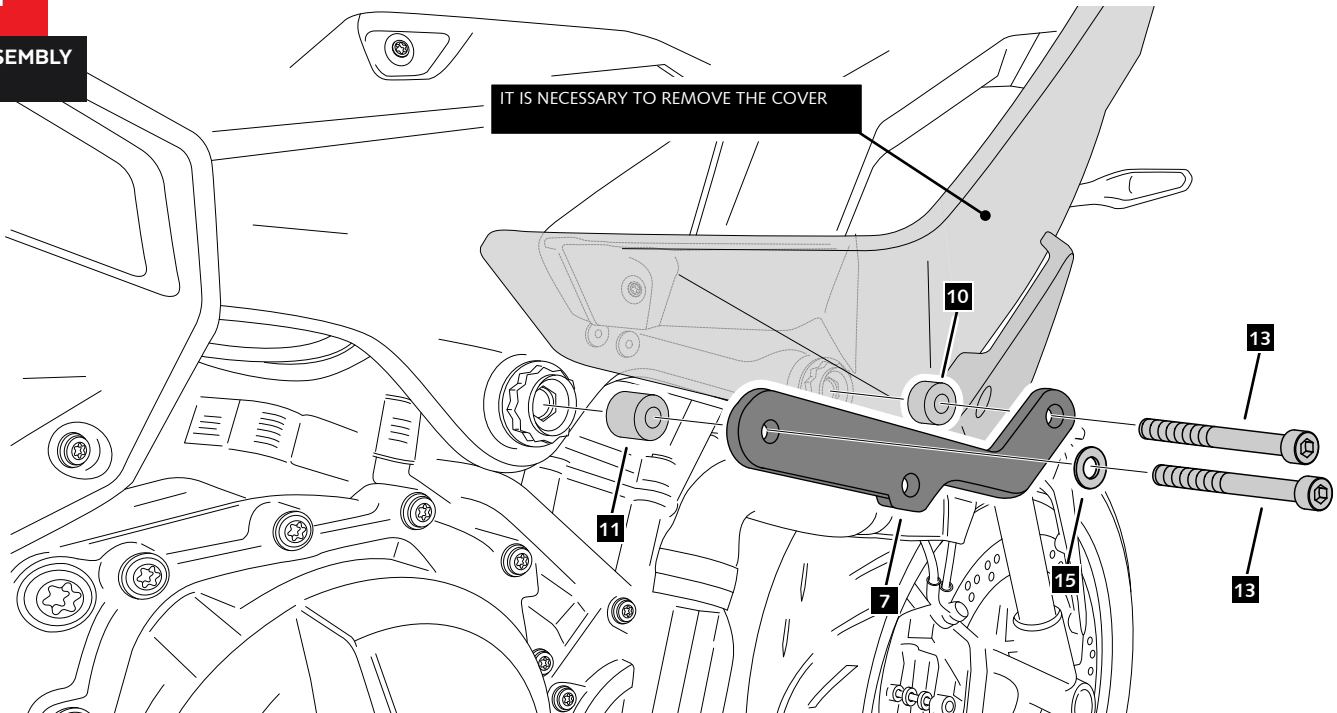
REF  
20389N

## MOUNTING INSTRUCTIONS

**1**

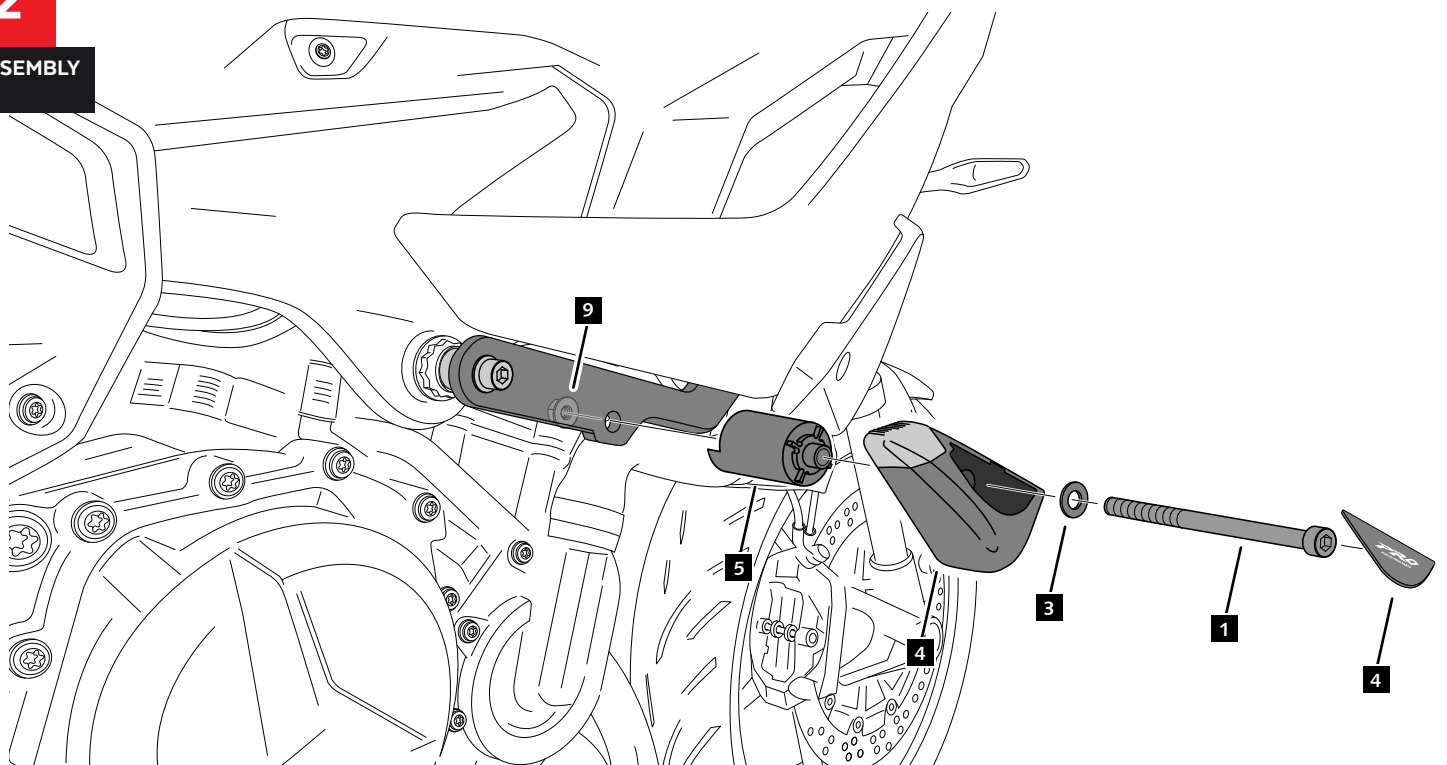
### RIGHT SIDE

ASSEMBLY



**2**

ASSEMBLY



# BMW F900R '20 / F900XR '20

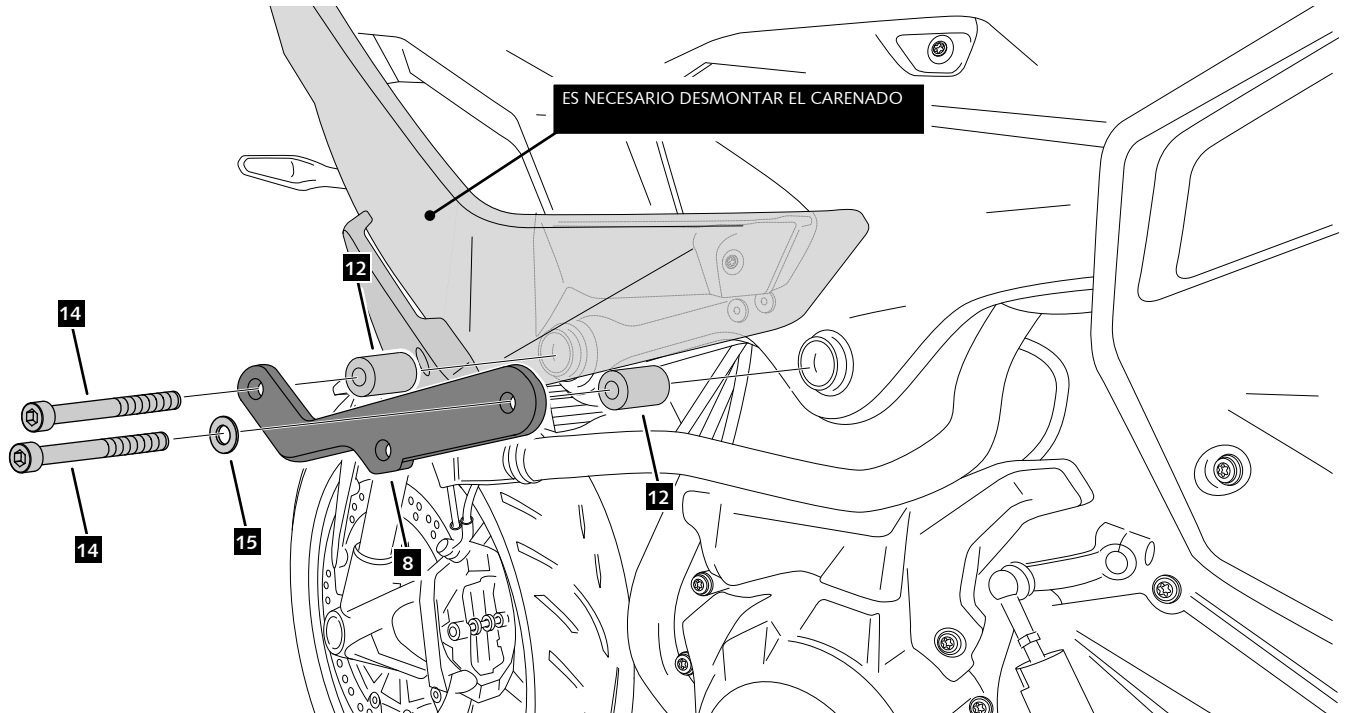
REF  
20389N

## MOUNTING INSTRUCTIONS

1

### LEFT SIDE

ASSEMBLY



2

ASSEMBLY

