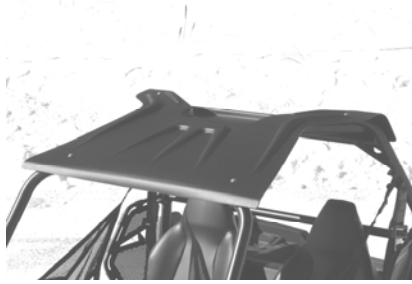


RZR BASKET ROOF MOUNTING INSTRUCTIONS



PLEASE NOTE:

- 1. THE MOUNTING OF THIS ROOF IS NOT INTENDED TO HOLD FOR TRANSPORTING ON AN OPEN TRAILER OR TRUCK. IT MUST BE REMOVED OR SECURED WITH A SECONDARY DEVICE FOR SUCH TRANSPORTING. WE ARE NOT RESPONSIBLE FOR LOSS OR ANY DAMAGE DUE TO TRANSPORTING ON AN OPEN TRAILER OR VEHICLE.**
- 2. THE MAXIMUM LOAD CAPACITY OF THE CARGO AREA IS 20 LBS.**

TOOLS REQUIRED FOR INSTALLATION:

ITEM	DESCRIPTION
1	2- 7/16" WRENCHES

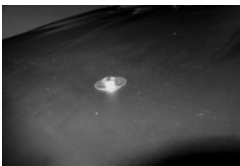
PARTS LIST:

- 1 RZR PLASTIC BASKET ROOF
- 2 4 TUBE P CLAMP W/VINYL CUSHION
- 3 4 1/4" - 28 X 1" STAINLESS STEEL HEX CAP SCREW
- 4 8 1/4" X 1" OD STAINLESS STEEL FENDER WASHER
- 5 4 1/4" - 28 STAINLESS STEEL TYPE NE NYLON INSERT NUT

MOUNTING STEPS

- 1 PLACE THE ROOF ON TOP OF THE VEHICLE
- 2 LOCATE THE MOUNTING HOLES AND PLACE A P CLAMP AROUND THE TUBE AT EACH LOCATION
- 3 INSERT A 1/4" HEX CAP SCREW WITH A FENDER WASHER ON IT FROM THE TOP DOWN THROUGH THE PLASTIC ROOF AND THE P CLAMP (REFER TO ILLUSTRATIONS A & B)
- 4 PLACE A FENDER WASHER ON THE CAP SCREWS AND SECURE WITH THE NYLON INSERT NUT (REFER TO ILLUSTRATION C)

A



B



C

