

## Commander/ Maverick Roof Assembly & Installation

### Tools Required

**Hand Drill**  
**1/4" Drill Bit**  
**7/16" End Wrench**  
**7/16" Socket & Socket Wrench**  
**Marker**  
**Knife or Scissors**

### Supplied Components

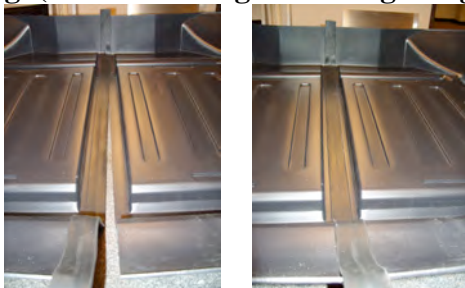
Quantity	Description
2	Roof Sections
1	5' H Molding
2	Edge assembly tab
1	Center assembly part
8	1/4"-20 x 3/4" Bolts
8	1/4"-20 Acorn Nuts
16	1/4" Washer
4	1/4"-28 x 1" Bolt
8	1/4" x 1" Fender Washer
4	2" Black Vinyl P-Clamp



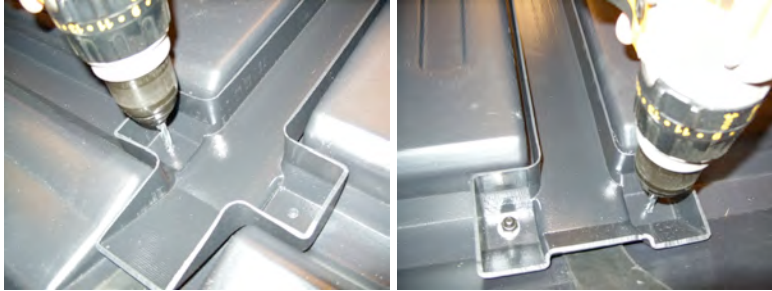
- 1) Working from one side to the other slide the H molding on to one of the roof sections. ( Leave some overhang of the molding on each side to be trimmed flush with the edge after the roof assembly is complete) See photo bellow.



- 2) Working from one side to the other slide the second roof half into the H molding. (Make sure to get them tight together) See photo bellow.



- 3) Place the assembly part into the roof and transfer the  $\frac{1}{4}$ " holes through the roof with the hand drill one at a time putting in the  $\frac{1}{4}$ "-20 x  $\frac{3}{4}$ " bolts with a 1" fender washer on the top of the roof and  $\frac{1}{4}$ " washer on the bottom inside the assembly part securing them with the acorn nuts. See photos bellow.



- 4) Place an assembly tab at the front and rear to the inside of the roof. Transfer the  $\frac{1}{4}$ " hole through the roof with the hand drill one at a time putting in the  $\frac{1}{4}$ "-20 x  $\frac{3}{4}$ " bolts with a  $\frac{1}{4}$ " washer on the top and bottom securing them with the acorn nuts. See photo bellow.



- 5) Using a knife or scissors cut the H molding off flush with the roof edge. See photo bellow.



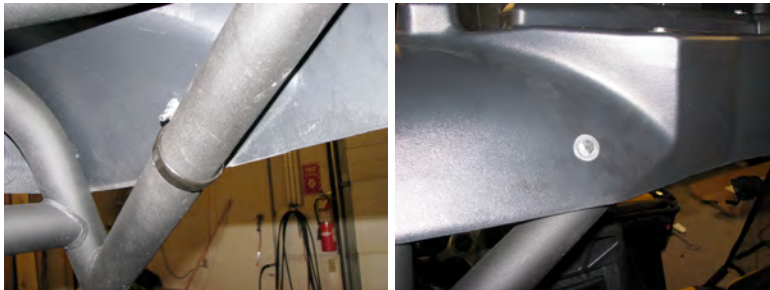
- 6) Place the assembled roof on top of your Commander UTV.



- 7) Place 2 P-Clamps on the ROPS in the front corners of the roof where you can fit a bolt through with the 1" fender washer on the top of the roof. Mark these locations.



- 8) Place 2 P-Clamps on the rear portions of the ROPS where you can fit a bolt through with the 1" fender washer on the top of the roof. Mark these locations.



- 9) Drill the marked locations with a 1/4" drill bit.  
10) Insert the 1/4"-28 x 1" inch bolts with a 1" fender washer on them down through the top of the roof and through the P-Clamp. Securing with a 1/4"-28 nylock nut.



**The mounting of this roof is not intended to hold for transporting on an open trailer or truck. It must be removed or secured with a secondary device for such transporting. We are not responsible for loss or any damage due to transporting on and open trailer or vehicle.**