



2020 | PRODUCT CATALOGUE





PERFORMANCE. INNOVATION. POWER.

PASSION FOR TECHNOLOGY.
COMMITMENT TO QUALITY.

Since 1947, Schumacher Electric Corporation has been leading change and driving performance to exceed its customers' expectations. Engineered patent-pending technologies and award-winning marketing makes Schumacher the brand of choice. Schumacher's legacy is its commitment to quality and exceptional customer service. Schumacher brings experience, innovation and excellence to the next generation of battery maintenance... the #1 name in battery chargers around the world.



The Schumacher name is also synonymous with NHRA drag racing. Don Schumacher rocked the racing world with his driving abilities and in 2013 Don was inducted into the International Motorsports Hall of Fame. Now his son, Tony Schumacher, is rocking the driving world with his eight consecutive NHRA Top Fuel World Championships. Passion and commitment are the Schumacher way.

Don Schumacher



Schumacher Electric Corporation is the US market leader for battery chargers, jump starters and associated products and accessories. Our company has developed a wide variety of power conversion products for private and professional users.

The Schumacher Electric Corporation consists of six production, distribution, sales/technical support and R&D locations worldwide. Schumacher Asia Pacific, located south of Brisbane, is the Sales and Technical support office for Schumacher Electric customers across Asia and Southern Africa.

Schumacher Electric is well positioned to be the global leader in the manufacture and distribution of power conversion products for all types of applications.

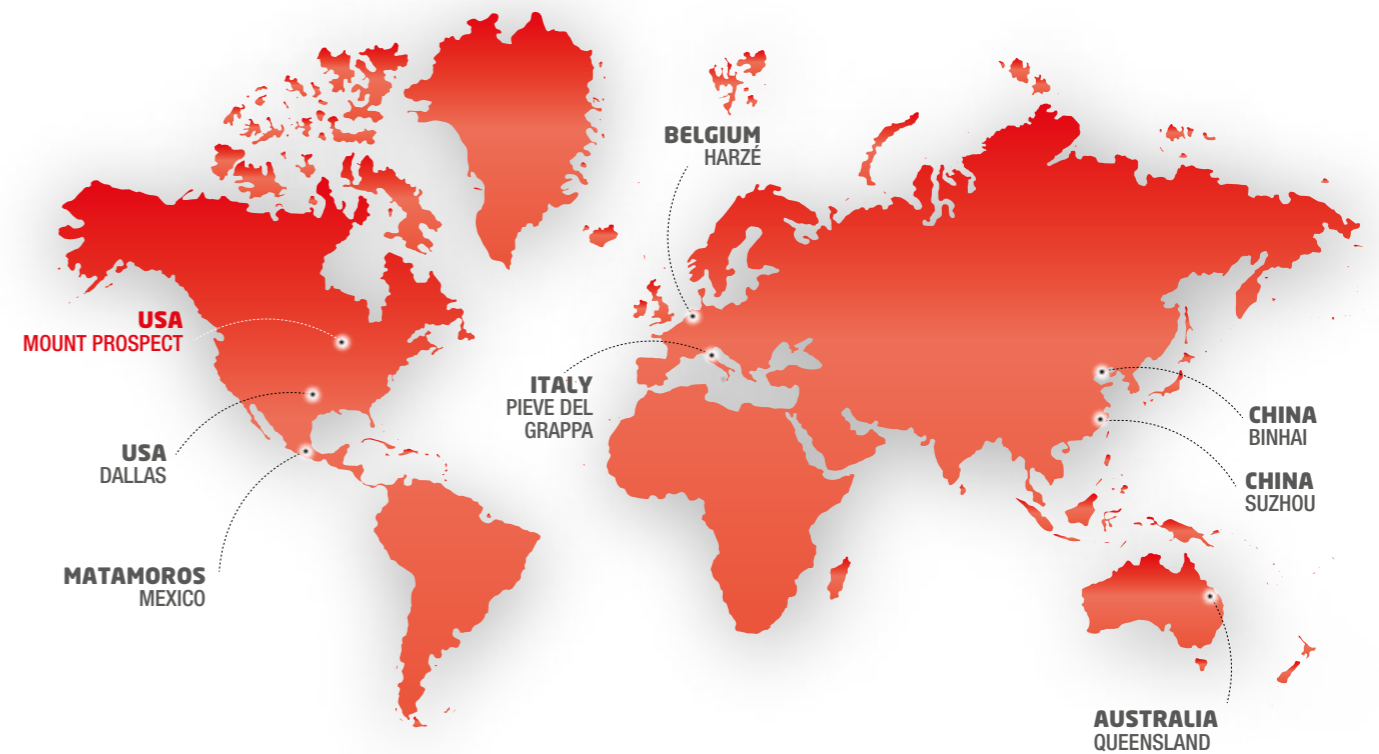


TABLE OF CONTENTS

BATTERY CHARGERS

SPI BATTERY CHARGERS.....	6
CHARGER ACCESSORIES.....	9
INDUSTRIAL CHARGERS.....	10

JUMP STARTERS

HYBRID TECHNOLOGY.....	13
ULTRACAPACITOR TECHNOLOGY.....	14
LITHIUM TECHNOLOGY.....	15
DSR PRO SERIES BOOSTERS.....	20
SOS BOOSTERS®.....	22
BOOSTERS FOR SPECIFIC APPLICATIONS.....	24

BATTERY TESTERS.....	26
----------------------	----

12V ACCESSORIES.....	27
----------------------	----

WORKLIGHTS.....	28
-----------------	----



FASTER, SMARTER, SAFER & ECO-FRIENDLY

Fully automatic & microprocessor-controlled.

Patented Speed Charge Technology ensures that the battery is charged as fast and safely as possible – up to 3 times faster than traditional chargers. Designed to charge most types of batteries (AGM, Gel, Calcium/Wet, Start & Stop).

The SPI3 is also compatible with lithium-ion batteries. The range features a digital display with scrolling multilingual instructions (except SPI1 & SPI2) insulated clamps and eyelet accessories (except SPI15), a hook attachment and protection bumpers.

Reverse polarity protection, thermal runaway protection and automatic shut-off are included as standard.

The SPI will charge batteries with voltage as low as 0.5V. In comparison, most chargers from the competition will only charge batteries with voltage as low as 4V.

Their ventilated housing compensates for the extra heat and prolongs the life of the chargers (SPI6, SPI10 & SPI15). The SPI are energy efficient and meet the highest industry standards. They feature multi-stage charging for added precision and safety. Float-mode monitoring ensures that the battery is kept fully charged and ready to use, for extended periods of time.



	SPI1	SPI2	SPI3	SPI6	SPI10	SPI15	SPI1224
Part number	94065104i	94065049i	94065050i	94065091i	94065092i	94065189i	94065194i
DC Voltage	6/12V			12V			12/24V
Nominal AC voltage	230 VAC - 50HZ						
Max. charging current	1A	2A	3A	6A	10A	15A <small>*power supply feature</small>	12V = 15A 24V = 10A
Dimensions (mm)	145 (L) 90 (W) 45 (H)	193 (L) 84 (W) 78 (H)	194 (L) 89 (W) 83 (H)	183 (L) 140 (W) 60 (H)	183 (L) 140 (W) 60 (H)	203 (L) 156 (W) 74 (H)	203 (L) 156 (W) 74 (H)
Weight	0,40 KG	0,65 KG	0,78 KG	1,20 KG	1,20 KG	1,25 KG	1,25 KG
IP rating	IP54	IP54	IP64	IP20			
Working t°	-20° to +50° C						



SPI1
6/12V-1A Maintainer

For 6/12V batteries up to 32Ah
Automatic voltage detection
Charging status LEDs



SPI2
6/12V-2A Battery Charger/Maintainer

For 6/12V batteries up to 32Ah
Automatic voltage detection
Charging status LEDs



SPI3
12V-3A Battery Charger/Maintainer

For 12V batteries up to 58Ah
Scrolling digital display
Compatible with Lithium batteries (LiFePO4)



SPI6
12V-6A Battery Charger

For 12V batteries up to 130Ah
Scrolling digital display
Ventilated housing



SPI10
12V-10A Battery Charger

For 12V batteries up to 200Ah
Scrolling digital display
Ventilated housing



SPI15
12V-15A Battery Charger

For 12V batteries up to 230Ah
Scrolling digital display
Ventilated housing
Power supply feature



SPI1224
12/24V-15/10A Battery Charger

Suitable for all 12V and 24V vehicles.
Features 2 selectable modes : Regular charge and Recovery mode (for deeply discharged & sulfated batteries)



SPI16 & SPI25 PRO
Multifunction battery chargers



SPI16 PRO
Part Number 94065316i



CLAMPS / QUICK CONNECT / EYELET

SPI25 PRO
Part Number 94065325i



CLAMPS



SHOWROOM MODE



**GEL/WET/AGM
VRLA/MF/DRY**



**COMPATIBLE LITHIUM
LIFEPO4**



RECOVERY MODE



**POWER SUPPLY
MEMORY SAVER**



ADAS SUPPLY

	SPI16 PRO	SPI25 PRO
Input	220-240V	220-240V
Frequency	50-60Hz	50-60Hz
Rated current (min - max)	4 - 8 - 16A	5 - 12.5 - 25A
Charging and testing stages	9	9
Battery voltage	12 - 24V	12 - 24V
Charge capacity	5Ah - 360Ah	5Ah - 550Ah
Maintenance capacity	5Ah - 550Ah	5Ah - 800Ah
Showroom function	13.8V - 13A	13.8V - 21A
IP rating	IP 20	IP 20
Dimensions (mm)	260 X 130 X 75	260 X 130 X 75
Weight	2Kg	2.5Kg

SPI CHARGER MOUNTING PLATES

Mount your SPI Chargers on a wall

SA190 Medium-Compatible with SPI6 & SPI10

Part Number 94065151

SA191 Large-Compatible with SPI15 & SPI1224

Part Number 94065152



BATTERY INDICATOR CABLES

Check the state of charge of your batteries at a glance

SA831 Battery Indicator 12V

Part Number 94500831

- Compatible with SPI1, SPI2, SPI3, SPI6, SPI10
- Cable length: 65 cm
- Includes a replaceable 15Amp in-line fuse
- Fitted with M8 eyelets



3 METER EXTENSION CORD

Extend the range of your charger

- Extend the range of your charger
- Compatible with SPI1, SPI2, SPI3, SPI6, SPI10
- The cable is fitted with Schumacher quick-connect on both sides
- Cable length : 300 cm - Cable cross-section : 1.3mm² / AWG 16

Part Number 94065225

CHARGING ACCESSORIES

**Eyelet Cord w/
7.5A in-line fuse**

Part Number
2299002042



Compatible with
SPI1, SPI2, SPI3, SPI6

**Clamp Cord
18GA**

Part Number
3899002636



**Eyelet Cord w/
15A in-line fuse**

Part Number
3899003531



Compatible with SPI10

**Clamp Cord
16GA**

Part Number
3899003431



**Cigarette-lighter
Connector Cord**

Part Number
94065149



Compatible with all
chargers up to 10 Amp

INC100
12V-100A Battery Charger / Power Supply

Part Number 94065033i

Charge, maintain and support batteries during diagnostic work

Fully automatic & microprocessor-controlled battery charger for batteries of any size: lead-acid, AGM, calcium, start/stop & Gel.

Three selectable modes:

- Automatic: up to 70A charging current
- Manual: variable charge rates (4/20/70 Amps) and digital timer
- Flash Reprogram: maintains stable voltage under varying loads during ECU reprogramming and diagnostic work. Voltage can be set between 13.0-14.8V. Features 70A continuous and 100A Peak (3 minutes) output current. Can also be used to maintain the battery of vehicles sitting in Showrooms.



Recovery mode for deeply discharged & sulphated batteries included

Digital display shows voltage and output current

5-meter cables equipped with heavy-duty clamps and Anderson connector

Adjustable mounting brackets for permanent installation to most vehicle lifts

Durable aluminum case

Dual temperature-controlled cooling fans

Short-circuit and thermal runaway protection

Case dimensions (LxWxH): 324 x 108 x 235mm

DSR90
6/12V Battery Charger with Engine Start Mode

Part Number 94065007

Extend the life of your batteries with this multifunction charger

Fully automatic microprocessor-controlled charger

Automatic voltage detection (6/12V)

Battery type selection between AGM, Gel, Calcium and sulfated batteries.

Charge rate selection: Slow (3A), Medium (5A) and Fast (20A)

90A / 150A Peak Engine Start mode for emergency starting

Built-in digital voltmeter/tester – shows battery voltage & charging percentage

Helps diagnose problems

175cm output cables with cord wrap on the back of the unit

Reverse polarity, short-circuit and thermal runaway protection

Case dimensions (LxWxH): 232 x 258 x 171 mm

Weight: 5.82 kg



DSR15
6V/12V ProSeries Battery Charger - 15A Fast Charge / 10A Charge / 2A Maintain

- 15A Fast Charge - Charges automotive, marine and light truck batteries
- 1 OA Slow Charge - Charges small batteries, such as those commonly used in garden tractors and motorcycles. Not for charging large batteries
- 2A Maintain - Keeps stored lead-acid batteries charged; charges and maintains small batteries
- Fully Automatic - Advanced circuit design monitors battery charging process
- Reverse Hook-up Protection - Helps protect battery and charger from damage
- Desulfation Mode - A special mode of operation designed for sulfated batteries
- Auto-Voltage Detection - Automatically detects 6 or 12 volt batteries
- Digital Display - Gives a digital indication of voltage, percent-of-charge or time



PSB-6
6/12V ProSeries Electronic Battery Bus Bar for Parallel Charging

Now you can charge up to six 6 or 12 volt batteries at the same time with Schumacher's PSB-6 Electronic Battery Bus Bar for Parallel Charging. Heavy duty, 12 gauge cables with insulated clamp carry up to 20 ampere per battery. Unused clamps are safely stored on an insulated backboard.

- Charges up to six 6 or 12 Volt batteries simultaneously
- Heavy duty, 12 gauge cables with insulated clamp carry up to 20 ampere per battery
- Insulated backboard allows unused clamp ere to be safely stored
- LED verifies proper connection and polarity
- Includes threaded, side-terminal adapters for convenient hook-up





These **professional jump starters** use **powerful ultracapacitors** to start any vehicle. They can **easily and quickly precharge** from the vehicle's battery residual voltage, from a running engine, or via the 12V cigarette-lighter socket of another vehicle.

Ultracapacitors have an almost **infinite lifespan** and can be used in **extreme temperature conditions** (-40°C to +65°C) without effect on their performance.

They are **autonomous, maintenance-free** and do not require permanent charging. The Hybrid Boosters are also equipped with an **internal lithium battery** which will energize the capacitors when the vehicle's battery is deeply discharged and if there is no access to another battery or vehicle. These jump starters are **fully safe** with **automatic protection** against reverse polarity and short-circuit.

They feature two specific modes for added efficiency:

- **Override mode** (Bypass) to start vehicles with deeply discharged battery or no battery mounted
- **Glow mode** to start diesel engines in cold temperatures

BATTERYLESS ULTRACAPACITOR BOOSTERS
DSR108 – DSR109

DSR108 12V-450A - Part Number 94080069
DSR109 12V-800A - Part Number 94080070

- Light & compact – fits in vehicle's glove box
- Fast precharge from a battery, with the 12V cable (included) or through the Micro-USB port
- Built-in voltmeter shows vehicle's battery voltage and charging level of capacitors
- Comes with a 12V cigarette-lighter cable, shock-absorbing rubber protection and a compact design



PART NUMBER	MODEL	VOLTAGE (DC)	CRANKING AMPS (CA)	PEAK AMPS (PA)	CABLE LENGTH	WEIGHT	DIMENSIONS L x h x w (mm)
94080069	DSR108	12V	450	900	0,35 m	1,5 kg	190 x 60 x 230
94080070	DSR109	12V	800	1600	0,40 m	2,0 kg	155 x 60 x 220
341300	Ceteor Hybrid 12V-1300A	12V	1300	2600	1,30 m	4,2 kg	375 x 320 x 110

MODEL	GASOIL ENGINES			DIESEL ENGINES	
	WARM NO BATTERY	COLD NO BATTERY	WARM NO BATTERY	COLD LOW BATTERY	COLD NO BATTERY
DSR108	<6.0L	<5.0L	<3.0L	<3.0L	<1.6L
DSR109	<8.0L	<6.0L	<3.5L	<3.5L	<2.5L
Ceteor Hybrid 12V-1300A	<8.0L	<7.0L	<5.0L	<5.0L	<4.0L



CETEOR 12V HYBRID BOOSTER
12V-1300A

Part Number 341300

- Ultracapacitor jump starter with back-up lithium battery
- Features a rotomolded and unbreakable case, heavy-duty curved clamps and double-insulated 1.30m-25mm² cable
 - Three ways of precharging the internal capacitors:
 - 1) From vehicle's flat battery (60-120 sec)
 - 2) On-board a vehicle via the 12V cigarette-lighter cable (4-6 min)
 - 3) With the internal lithium battery (4-6 min)
 - Digital display shows vehicle's battery voltage and charging level of internal capacitors
 - Comes with a 12V cigarette-lighter cable and a Micro-USB cable to charge the lithium battery



DSR128
PROFESSIONAL LITHIUM BOOSTER
Jump Start up to 50 vehicles in a row

Part Number 94065205i

- Super Light, compact and powerful jump starter
- Long-lasting & high-output Lithium LiFePO₄ battery (24,000 mAh)
- Features a scrolling display with step-by-step instructions
- Dual 2.1A USB Ports to charge smartphones & tablets
- Heavy-duty curved clamps and flexible cable
- Comes with a 12V-3A automatic & intelligent charger and a 12V cable for on-board charging
- 12V port adapter to power 12V devices and to use as a memory saver
- Fully safe & automatic: Spark-free protection against reverse polarity, overcurrent, short-circuit, overload, overvoltage and overcharge
- The DSR 128 is capable of starting 5L petrol and 3.6L diesel engines



SL1317
JUMP STARTER + PORTABLE POWER
Fits everywhere, even in your pocket

Part Number 940261317

- Portable compact design – fits in your pocket, bag or glove box
- 15,000 mAh
- Features a LCD Display with On/Off button
- USB 5V, 1A, 2.1A, 2.4A
- 12V cigarette port (60W)
- Built-in LED Light (3 modes)
- Equipped with ultra safe Smart Cables: Provides protection against reverse polarity, short circuit, low voltage, high temperature and reverse charging
- Great for 6-8 cylinder cars



Qualcomm is a trademark of Qualcomm Incorporated, registered in the United States and other countries. Quick Charge is a trademark of Qualcomm Incorporated. All Qualcomm Incorporated trademarks are used with permission.

SL1316
LITHIUM POWER PACK
Carry extra power, anytime, anywhere

Part Number 940651316i

- Ultra compact Jump Starter / Power Pack
- 12,000 mAh Lithium LiFePO₄ battery
- Features a scrolling display with step-by-step instructions
- 2.1A USB Port to charge smartphones & tablets
- Ultra-bright LED light – use as a worklight or flash as a hazard signal
- 12V port adapter to power 12V devices and to use as a memory saver
- Fully safe & automatic: Spark-free protection against reverse polarity, overcurrent, short-circuit, overload, overvoltage and overcharge
- Comes in a carry case with accessories
- Great for power sports, motorcycles and 4-6 cylinder cars



**SL1327
JUMP STARTER + PORTABLE POWER**

Fits everywhere, even in your pocket

Part Number 940261327

- Portable compact design – fits in your pocket, bag or glove box
- 8,000 mAh
- Features a LCD Display with On/Off button
- USB 5V, 2.4A
- Built-in LED Light (3 modes)
- Equipped with ultra safe Smart Cables: Provides protection against reverse polarity, short circuit, low voltage, high temperature and reverse charging
- Great for 8 cylinder cars



Qualcomm is a trademark of Qualcomm Incorporated, registered in the United States and other countries. Quick Charge is a trademark of Qualcomm Incorporated. All Qualcomm Incorporated trademarks are used with permission.

**SL1314
JUMP STARTER + PORTABLE POWER**

Fits everywhere, even in your pocket

Part Number 940261314

- Portable compact design – fits in your pocket, bag or glove box
- 6,000 mAh
- Features a LCD Display with On/Off button
- Dual 2.1A USB Port to charge smartphones & tablets
- Built-in LED Light (3 modes)
- Equipped with ultra safe Smart Cables: Provides protection against reverse polarity, short circuit, low voltage, high temperature and reverse charging
- Great for motorcycles and small vehicles (4-6 cylinder cars)



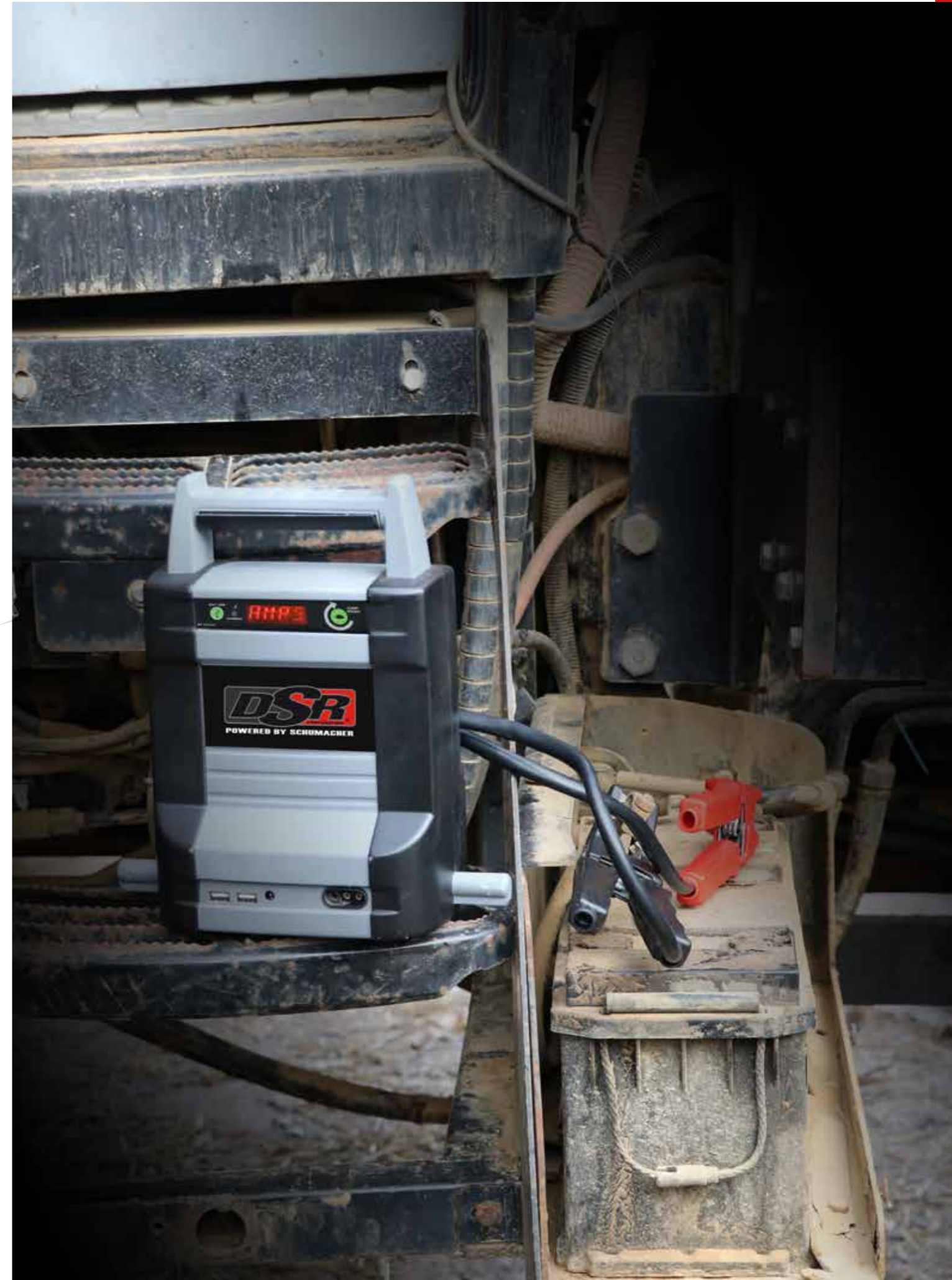
MODEL	VOLTAGE (DC)	BATTERY CAPACITY (MAH)	CRANKING AMPS (CA)	PEAK AMPS (PA)	WEIGHT
DSR128	12V	24,000	650	2000	3,0 kg
SL1317	12V	15,000	500	1000	1,86 kg
SL1316	12V	12,000	200	1000	1,52 kg
SL1327	12V	10,000	400	800	1,02 kg
SL1314	12V	8,000	300	600	0,73 kg

SL66 JUMP STARTING CABLE

Perfect for motorcycle & power sports batteries

Part Number 94065205C

- Compatible with SL11-C and SL651 lithium jump starters
- Fitted with M6 eyelets for permanent mounting to motorcycles, quad bikes and powersports vehicles
- Flexible and easy to hide
- Cable length : 61 cm





DSR5221i

Booster 12V Premium

Part Number 94065198i

- Professional 900CA high-output AGM battery
- ON/OFF switch eliminates shorting of clamps & battery drain
- Reverse polarity alarm & anti-spiking protection
- Digital display indicates internal battery level and voltage of vehicle's battery
- Heavy-duty curved clamps & flexible cable
- 300A in-line fuse protects against excessive current output
- 12V accessory outlet - also used for memory saver mode
- External 12V-2Amp automatic & intelligent charger
- 2,1A USB output ideal for charging smartphones & tablets



DSR5222i

Booster 12/24V Premium

Part Number 94065199i

- 2 x professional 900CA high-output AGM batteries
- ON/OFF switch eliminates shorting of clamps & battery drain
- Reverse polarity alarm & anti-spiking protection
- Digital display indicates internal battery level and voltage of vehicle's battery
- Heavy-duty curved clamps & flexible cable
- 500A in-line fuse protects against excessive current output
- 12V accessory outlet - also used for memory saver mode
- External 12V-2Amp automatic & intelligent charger
- 2,1A USB output ideal for charging smartphones & tablets



PART NUMBER	MODEL	VOLTAGE (DC)	CRANKING AMPS (CA)	PEAK AMPS (PA)	CABLE LENGTH	CABLE CROSS SECTION	WEIGHT	DIMENSIONS
94065198i	DSR5221i	12V	900	2300	1,44 m	21 mm ²	9,8 kg	34 x 41 x 14
94065199i	DSR5222i	12/24V	1800/900	4600/2300	1,46 m	33 mm ²	18,9 kg	34 x 41 x 20

MEMORY SAVER

OBD-L

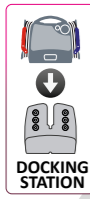
Memory Saver Detector Cable

Part Number 940261086

Save the settings of your vehicle while disconnecting and replacing the battery

Attach the OBD-L between a portable power unit (PBI, PJI or Ceteor Booster for example) and the vehicle's OBDII diagnostic port. This allows to maintain power to the vehicle's on-board devices when the vehicle's battery is disconnected for service or replacement. Fully automatic and user-friendly. Works on all vehicles equipped with a standard OBDII port. Colour LEDs indicate if the connection on both sides is OK, and if it is safe to disconnect the battery.





The concept

- **Always in the right place**
In the workshop, the booster has its own place and all users know where to find and store it. In the vehicle, it is perfectly set in the docking station.
- **Always 100% charged**
Stored in its docking station, the booster is automatically and optimally charged between two starts.
- **100% successful starts**
Always at its maximal capacities, the booster ensures 100% successful starts.
- **Longer lifetime**
The optimal charge of the PROPULSTATION® avoids the irreversible battery sulfation of its internal battery and will prolong the lifetime of the unit.



VOLTAGE DETECTION SYSTEM AND CORRECT CONNECTION SIGNAL

FUSE

The fuse protects the booster battery against excessive current output and short-circuits. It is very easy to replace.



On Propulstation® 12/24V, a LED system indicates the voltage to select on the booster. It reduces the risk of misuse while using a 12/24V booster. In the case of misuse any concentration of gas will be evacuated. The LEDs also indicate if the booster is correctly connected to the station. If it is the case, the LED corresponding to the voltage of the charging circuit is lit on.

CHARGING CONNECTOR

This innovation makes the storing of the booster in its station easier. Thanks to the powerful magnets, the booster stays in its place.

DOCKING STATION IN 2 VERSIONS

VEHICLE-DC

The vehicle station must be connected to the recovery vehicle's battery by the DC/DC 12V/12V (or 24V/24V) lead.

This has a one-way diode that prevents the breakdown vehicle from discharging the booster. The lighting and other equipment on the breakdown vehicle are heavy current consumers.



WORKSHOP-AC

The workshop station has a 230V/12V AC/DC charger to connect to the mains. Due to the weight of the portable booster 12/24 and 24V it is advised to mount the station on the floor.



ENGINE SIZE CHART - CHOOSE THE RIGHT PROPULSTATION® BOOSTER !

Power of the vehicle in HP	12V Applications						24V Applications						
	<125HP	150HP	175HP	250HP	300HP	350HP	500HP	100HP	250HP	500HP	1000HP	1500HP	2000HP
PPS 12V - 800CA	■	■	■	■	■	■							
PPS 12V - 1200CA	■	■	■	■	■	■							
PPS 12/24V - 2400/1200CA	■	■	■	■	■	■	■	■	■	■	■	■	■
PPS 24V - 1200CA								■	■	■	■	■	■
PPS Mobile 12/24V - 3200/1600CA	■	■	■	■	■	■	■	■	■	■	■	■	■
PPS Mobile 12/24V - 6400/3200CA	■	■	■	■	■	■	■	■	■	■	■	■	■
PPS Mobile 24V - 1600CA								■	■	■	■	■	■
PPS Mobile 24V - 3200CA								■	■	■	■	■	■

Legend:
 ■ Normal
 ■ Intensive

Caution :

The circumstances/conditions when starting a vehicle depend on various parameters: vehicle's condition, engine type (petrol or diesel) and power, presence of battery in vehicle or not, temperature, frequency of use ... Those influence the jump start's facility - Chart for your information - Manufacturer's advice.

	PPS 12V 1200CA	PPS 12/24V 2400/1200CA	PPS 24V 1200CA	PPS 12/24V Mobile 3200/1600CA	PPS 12/24V Mobile 6400/3200CA	PPS 24V Mobile 1600CA	PPS 24V Mobile 3200CA
Part Number	520003	520008	520005	560000	560001	560002	560003
Voltage (DC)	12V	12V/24V	24V	12V/24V	12V/24V	24 V	24V
Cranking Amps (CA)	1200 A	2400/1200 A	1200 A	3200/1600 A	6400/3200 A	1600 A	3200 A
Peak Amps (PA)	3100 A	6200/3100 A	3100 A	7750/3875 A	15550/7750 A	3875 A	7750 A
Starting cable length	1,55 m	1,35 m	1,35 m	2,10 m	2,10 m	2,10 m	2,10 m
Cablecross-section	50 mm ²	50 mm ²	50 mm ²	70 mm ²	70 mm ²	70 mm ²	70 mm ²

DOCKING STATIONS

WORKSHOP STATION - WITH AC/DC-230V/12V CHARGER	AC12	AC1224	AC1224	ACM	ACM	ACM	ACM
VEHICLE STATION - WITH DC/DC CABLE	DC12	DC1224	DC1224	DCM	DCM	DCM	DCM

More than 40 Portable and Mobile models in of 6V, 12V, 24V, 28V, 48V, 72V and 110V.

The power of the SOS Booster® is the result of a meticulous selection of the best components from all over the world. They are chosen for their quality, durability and ability to withstand severe use environments. A very powerful Booster, on which you can count in any situation.

BATTERIES

Our AGM batteries, with pure lead are extremely efficient thanks to their ability to deliver energy at high amperage almost instantaneously (cranking amps is what is required to make the vehicle start).



FUSE

The fuse protects the booster battery against excessive current output and short-circuits. It is very easy to replace.



CLAMPS

The clamps have been developed for their handy aspect, curved jaws with wide opening, as well as an optimization of safety and performance. They are entirely insulated and fitted with a copper bridge which insures the diffusion of the current on both bronze jaws. The blue clamp is equipped with a LED (lamp) for an easier and safer use, especially in the dark.



STARTING CABLES

Starting cables (double insulation) with an optimal length and extremely flexible benefit from a high conductivity as well as a perfect shape resistant to frequent handling.



ENGINE SIZE CHART - CHOOSE THE RIGHT SOS BOOSTER® !

MODELS	VEHICLES													
	6V			12V					24V					
Power in HP *	100	<125	150	175	250	300	350	500	100	250	500	1000	1500	2000
860011 SOS 6V - 850CA	■													
860000 SOS 6/12V - 1750/850CA	■	■	■	■	■									
861044 MINI 12V - 440CA		■	■											
861040 MINI 12V - 440CA (MOTO)		■	■											
861001 MICRO 12V - 700CA		■	■	■										
861003 MICRO 12V - 700CA (MOTO)		■	■	■										
861002 MICRO 12V - 800CA		■	■	■	■									
861011 MICRO 12V - 1000CA		■	■	■	■	■								
860003 SOS 12V - 1200CA		■	■	■	■	■	■							
861007 SOS 12V - 1600CA		■	■	■	■	■	■	■						
761005 SOS 12V - 2400CA		■	■	■	■	■	■	■	■					
761001 SOS 12/24V - 1400/700CA		■	■	■	■	■	■	■	■	■				
761006 SOS 12/24V - 1600/800CA		■	■	■	■	■	■	■	■	■	■			
760008 SOS 12/24V - 2400/1200CA		■	■	■	■	■	■	■	■	■	■	■		
960000 SOS M 12/24V - 3200/1600CA		■	■	■	■	■	■	■	■	■	■	■	■	
960001 SOS M 12/24V - 6400/3200CA		■	■	■	■	■	■	■	■	■	■	■	■	■
760005 SOS 24V - 1200CA									■	■	■	■	■	■
960002 SOS M 24V - 1600CA									■	■	■	■	■	■
960003 SOS M 24V - 3200CA									■	■	■	■	■	■

*Recommendations based on diesel engines (petrol engines are easier to start).

Legend :
 ■ Normal use
 ■ Intensive use
 M Mobile

Caution :
 The circumstances/conditions when starting a vehicle depend on various parameters: vehicle's condition, engine type (petrol or diesel) and power, presence of battery in vehicle or not, temperature, frequency of use ...

OPTIONAL AUXILIARY CABLES



FOR PORTABLE
 ITEM 860014 Auxiliary connector - Built on the booster



FOR MOBILE
 ITEM 860022 Auxiliary connector - Built on the booster

MODEL	VOLTAGE (DC)	CRANKING AMPS (CA)	PEAK AMPS (PA)	CABLE LENGTH	CABLE CROSS SECTION	AUTOMATIC CHARGER	NET WEIGHT	DIMENSIONS
861002 MICRO 12V800CA	12	800	2370	1,3 m	25 mm ²	2 A	9,5 kg	375 x 110 x 320
860003 SOS 12V-1200CA	12	1200	3100	1,5 m	35 mm ²	2A	14,5 kg	450 x 130 x 390
761001 SOS 12/24V-1400/700CA	12/24	1400/700	3720/1860	1,35 m	35 mm ²	4 A	20,5 kg	530 x 160 x 480
760008 SOS 12/24V-2400/1200CA	12/24	2400/1200	6200/3100	1,35 m	50 mm ²	4 A	24,8 kg	530 x 160 x 480
760005 SOS 24V 1200CA	24	1200	3100	1,35 m	50 mm ²	3,5 A	24,8 kg	530 x 160 x 480
960000 SOS MOBILE 12/24V-3200/1600CA	12/24	3200/1600	7750/3875	1,95 m	70 mm ²	10 A	55 kg	470 x 340 x 970
960001 SOS MOBILE 12/24V-6400/3200CA	12/24	6400/3200	15550/7750	1,95 m	70 mm ²	10 A	68,5 kg	470 x 340 x 970
960002 SOS MOBILE 24V-1600CA	24	1600	3875	1,95 m	70 mm ²	3,5 A	54 kg	470 x 340 x 970
960003 SOS MOBILE 24V-3200CA	24	3200	7750	1,95 m	70 mm ²	14 A	72,5 kg	470 x 340 x 970

BOOSTERS FOR SPECIFIC APPLICATIONS

We are proud to develop and manufacture professional jump starters for all kinds of applications and vehicles in 6V, 12V, 24V, 28V, 72V and 110V. Do not hesitate to contact us for detailed information or if you have any specific enquiry.

NATO JUMP STARTERS



The NATO jump starters can start vehicles without batteries up to 1500HP. They all have a NATO stock number (NSN) and are used by the NATO treaty countries to start vehicles such as Jeep, heavy trucks and battle tanks. We offer starting cables with NATO connectors and other specific plugs for a perfect connection and better conductivity.



SOS AVIO JUMP STARTERS – 12/24/28V

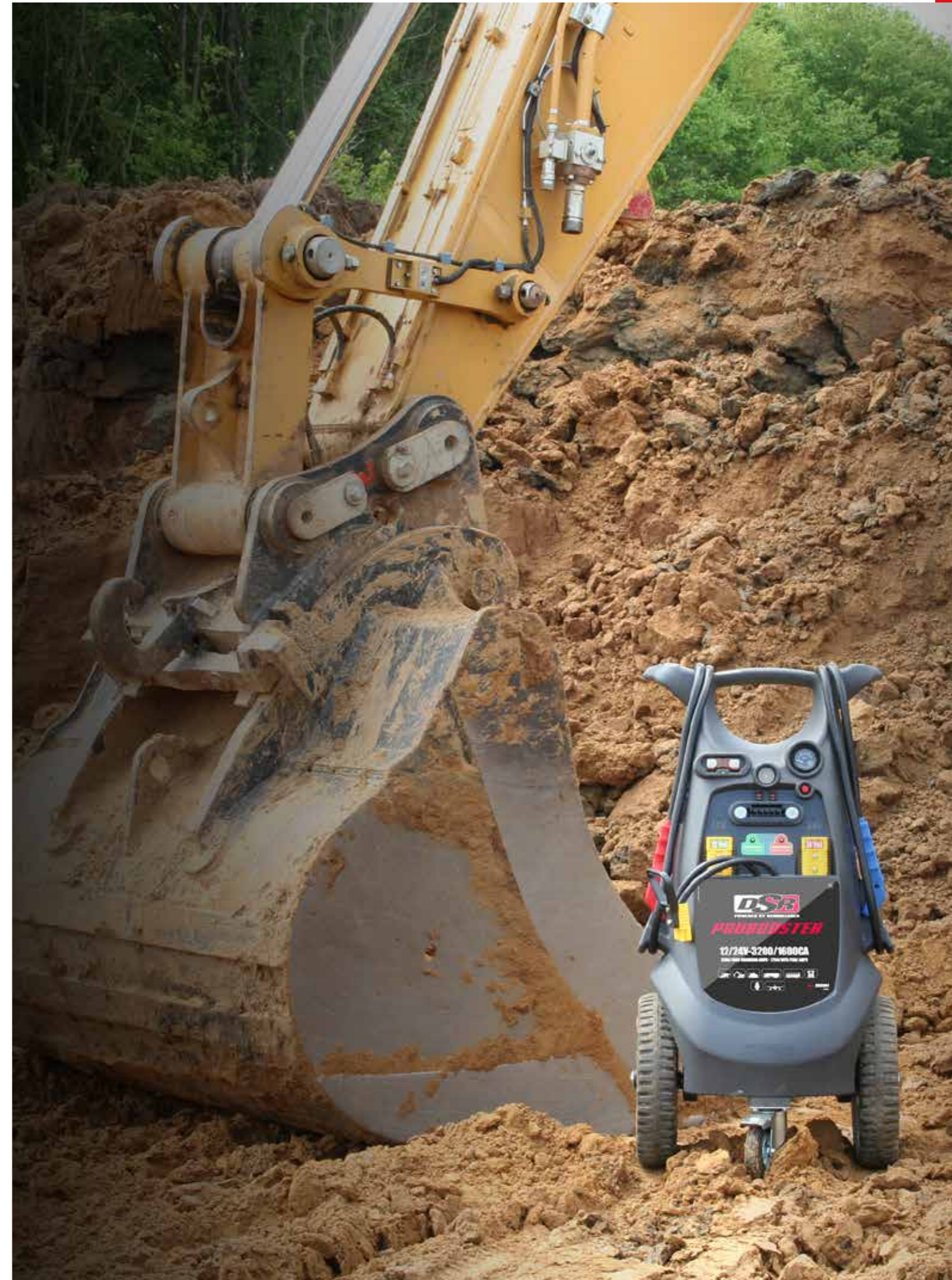


The AVIO jump starters are designed to start piston, turboprop and turbine aircrafts and helicopters in 12V, 24V or 28V, as well as service vehicles. The AVIO jump starters are equipped with auxiliary connectors which enable the use of jump cables fitted with 3-pin aviation plug.



LOCO JUMP STARTERS

The LOCO jump starters are designed to start diesel and electric locomotives (pantographs) in 24V, 72V, 110V and other voltages. They can be equipped with an auxiliary connector which enables the use of jump cables fitted with specific locomotive connectors.



SBT1
Schulink Wireless Tester for 6/12V batteries & 12/24V charging systems

Part Number 940261243

- Perform battery and system test wirelessly from your smartphone or tablet
You can then send the results by email or text messages
- Works with Bluetooth connection and the SBT1 Schulink app (available on iOS & Android) which includes 8 languages
- Application: 6 & 12V automotive batteries (SS, EFB, Start-Stop, AGM and EV batteries included), as well as 12 & 24V charging/starting systems
- Able to test all types of lead-acid batteries as low as 1.5V and with 40-2000CCA operating range
- Stores up to 2.000 test records
- LED Indicators and ON/OFF button
- Compact design with waterproof (IP65) rating
- 50 cm cables with durable clamps
- 3.7V internal lithium ion battery to enable testing of batteries with low voltage
- Product dimensions (LxWxH): 98 x 50 x 25 mm
- Weight: 0.32 kg



PTI900X
Digital Battery Tester with Printer

Part Number 94065027

Application: 6 & 12V batteries and 12 & 24V charging/starting systems

- Compatible with all types of lead-acid batteries
- Voltmeter range: 1.5V-30V
- Operating range: 40-2000CCA (SAE)
- Built-in thermal printer and LCD display
- Comes in heavy-duty plastic case and includes 6 x AA batteries and a paper roll.
- Case dimensions (LxWxH): 251 x 130 x 64 mm
- Weight: 1.5 kg



BT175
Digital Tester for 12V batteries & starting/charging systems

Part Number 940261128

- Checks 12V batteries & starting/charging systems with digital accuracy
- For Lead-Acid, VRLA, AGM and Gel Batteries
- Digital display shows voltage and CCA rating
- LED lights indicate diagnostic (OK – OK & Recharge – Recharge & Retest / Weak – Bad Battery)
- Voltmeter range: 7-15V
- Operating range: 100-1200CCA (SAE)
- Dimensions (LxWxH): 70 x 120 x 15 mm
- Weight: 0.25 kg



BT55
6/12V Voltmeter and Alternator Tester

Part Number 940261175

- Checks the battery state of charge and charging system output.
- Easy-to-read LCD display
- Two LED indicators show the status of the alternator
- Dimensions (LxWxH): 70 x 120 x 15 mm
- Weight: 0.20 kg



BT100
Tests 6 and 12V Volt batteries up to 1000 cranking amps

Part Number 94026319

- 6 & 12 volt batteries up to 1000 cold cranking amps
 - Voltmeter
 - Battery state of charge
 - Battery cranking ability
 - Charging system output
 - Starter motor draw
- Top mounted rocker switch for ease of operation.
 - Rubber insulated handle for comfort and safety.
 - Accurate, shock-resistant and easy-to-read clear view meter.
 - Heavy-duty, color-coded, insulated, sure-grip clamps.
 - Durable, ventilated black enamel steel case.



SA1345
CONNECTED BATTERY MONITOR

Check your battery condition wirelessly using your smart phone or tablet



Part Number 940261345

- Shows battery charge percentage.
- When connected to wireless internet, you can view your battery condition from any location.
- Alerts user when the battery needs to be replaced or charged.
- When connected to a Schumacher Electric charger, the app will display charging current and voltage.



SA1346
TPMS (TIRE PRESSURE MONITORING SYSTEM)
Digital Tester for 12V batteries & starting/charging systems

Part Number 940261346

- 6 & 12 volt batteries up to 1000 cold cranking amps
 - Voltmeter
 - Battery state of charge
 - Battery cranking ability
 - Charging system output
 - Starter motor draw
- Top mounted rocker switch for ease of operation.
 - Rubber insulated handle for comfort and safety.
 - Accurate, shock-resistant and easy-to-read clear view meter.
 - Heavy-duty, color-coded, insulated, sure-grip clamps.
 - Durable, ventilated black enamel steel case.



SL26
200 Lumens worklight 360°

Part Numbers: Green 94500814 / Black 94500838

- 5 Super bright SMD LEDs + 1 Watt torch function
- Soft touch rubberized casing
- Multifunction switch for worklight and torch
- End mounted super strong magnet
- Swivel Hook
- Micro USB charging cable included



SL137
600 Lumens worklight 360°

Part Numbers: Red 94500816 / Green 94500854 / Black 94500855

- Li 2x 2600 mAh batteries
- 600 Lumens 360 Min. Life - 300 Lumens 720 Min. Life
- 3 LED battery level Indicators
- 16 Super bright SMD LEDs + 3 Watt torch function
- Multifunction switch for high/low and torch function
- One base and two rear mounted super strong magnets
- Two swivel hooks
- Micro USB charging cable included



SL184
SLIM worklight 360°

Part Numbers: Red 94500859 / Green 94500851

- Li 2600 mAh battery
- 600 Lumens 120 Min. Life
- 16 Superbright SMD LEDs
- Soft touch rubberized casing
- Adjustable rotary switch - up to 600 Lumens
- Unique 360° swivel and tilt function
- Magnetic base
- Retractable hook
- Micro USB charging cable included



SL 175
Swivel floor worklight 360°

Part Number 94500175

- 750 Low lumens - 1500 Medium lumens - 3000 High lumens
- Li 4400 mAh
- 72 Super-bright SMD LED
- Soft touch foam-rubber handle
- Low/Medium/High/OFF Push button
- Unique ball joint enables 360° swivel and tilt function
- 3 battery level LED Indicators
- USB 5V2,1A outlet for charging electronics (mobile phone, tablet etc).
- IP 65
- Wall charger included



SL 879U
Floor lamp with replaceable battery

Part Number 94500879

- 15W COB LED, up to 1200 Lumens
- Stepless dimmer mode
- Battery level indicator LEDs
- Floor Lamp with Replaceable Battery
- 15W COB LED, up to 1200 Lumens
- Aluminum body
- Removable battery pack
- Rechargeable 18650 Lithium-Ion battery: 7.4V - 4Ah
- IP44



Optional accessories (sold separately):



SA882U
Tripod Stand
(for use with one or two lights)
94500882



SA881U
Magnetic Stand
94500881



SA880U
Additional Removable Battery
94500880z

LED WORKLIGHTS

Red / Green / Black / Silver	SL 26	SL 137	SL 184	SL 175	SL 879
LUMENS	200	600/300	600	750/3000	> 1200
Technology	5 SMD	16 SMD	16 SMD	72 SMD	COB
Lithium - Ion Battery capacity	1500 mAh	2 x 2600 mAh	2600 mAh	4400 mAh	7.4V - 4000 mAh
	✓	✓	✓	✓	
	1	3	1	/	Magnetic stand
	✓	✓	✓	Soft touch foam-rubber handle	
	1	2	1	/	
Operating time (Min) High/Low/Torch	360/180	840/720/360	600/90	High/Medium/Low 300/150/90	
	1 watt	3 watts	1 watt	/	15 watts
Micro USB charging port & cable	✓	✓	✓	Wall Charger included	Removable Battery pack
IP RATING	IP 20	IP 54	IP 54	IP 65	IP 44

Unique 360° swivel and tilt function

Soft touch rubberized casing

Swivel Hooks

Magnets

Torch

SMD LEDs (surface mounted diodes)

SMDs produce a white light with very high lumen output. SMDs give a wide 120° angle and even spread of light across the work area.

COB LEDs (chip-on-board)

Produces the highest lumen output from the LED range of lights. These chips give a 120° angle and even spread of white light.