

### Installation & Operations Manual for Pursuit Side View Mirror

#### Contents:

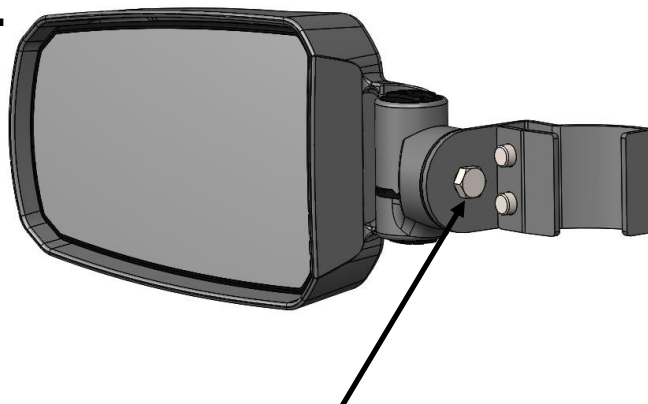


Left Mirror and Clamp Assembly

Right Mirror and Clamp Assembly

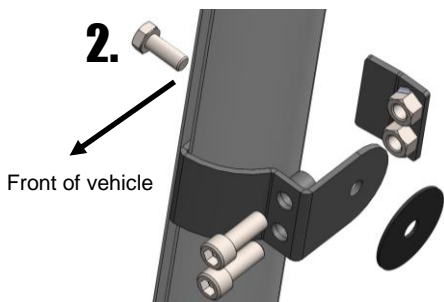
#### Installation:

1.



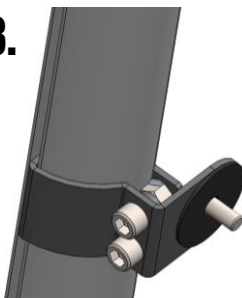
Temporarily remove this bolt to detach Clamp Assembly

2.



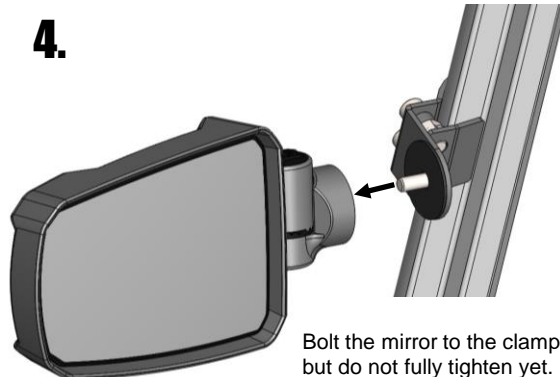
Disassemble clamp by removing the two 8mm socket head bolts. Place curved half of clamp against roll cage in desired mirror location. Insert bolts and thread into clamp plate with the welded nuts facing the bolt heads. Tighten bolts.

3.



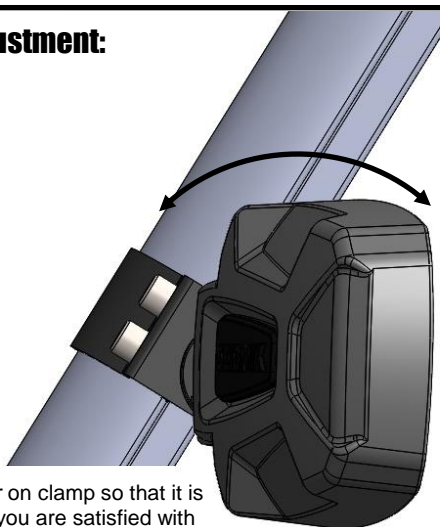
Put mirror mounting bolt through hole and place large rubber washer on the end of the bolt.

4.

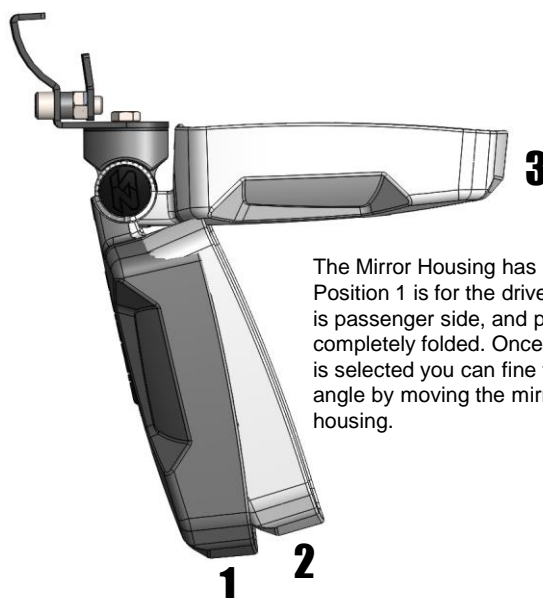


Bolt the mirror to the clamp but do not fully tighten yet.

#### Initial Adjustment:



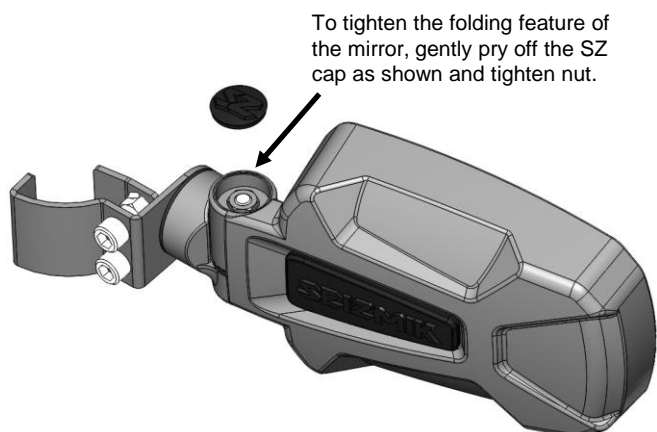
Rotate mirror on clamp so that it is level. When you are satisfied with the location and angle, tighten bolt.



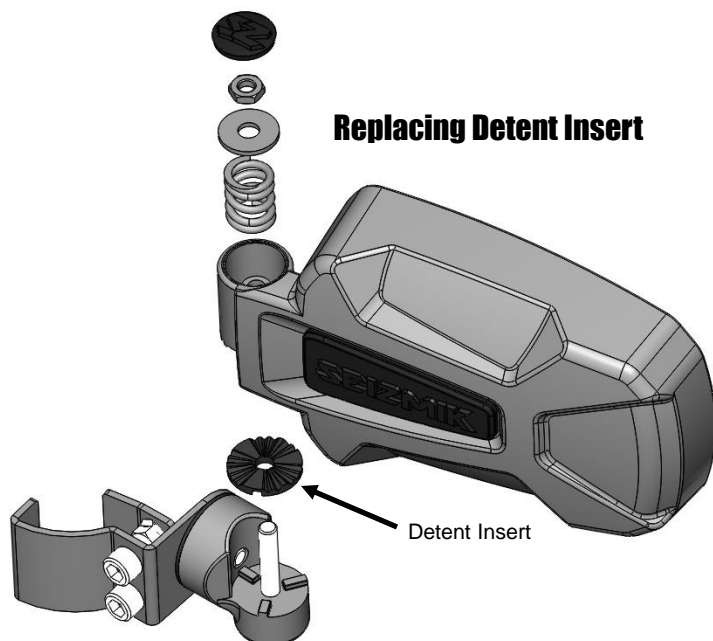
The Mirror Housing has 3 detent positions. Position 1 is for the drivers side, position 2 is passenger side, and position 3 is completely folded. Once the detent position is selected you can fine tune the viewing angle by moving the mirror glass within the housing.

## Repair and Maintenance

### Tightening Mirror Housing Folding Feature



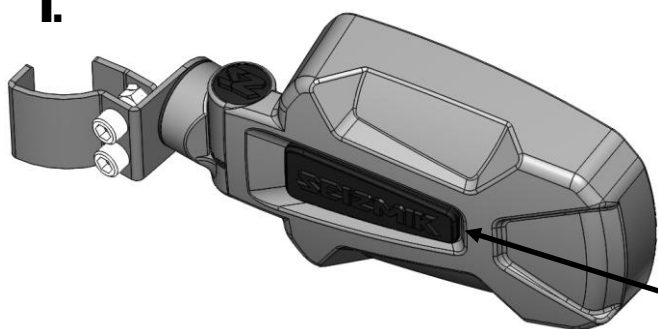
### Replacing Detent Insert



If for any reason the Mirror Detent Insert ever becomes worn enough that the mirror will not hold position well, please contact us for free replacements. It can be replaced by first removing the nut shown in the previous step. Next, remove the Mirror Housing, Spring, and Washer. The Detent Insert can now be gently pried off and replaced. The Detent is designed so it can only go on one way.

### Replacing or Adjusting Mirror Glass

1.



To replace or adjust Mirror Glass pivot, gently pry off SEIZMIK cap from the location shown.

2.

