

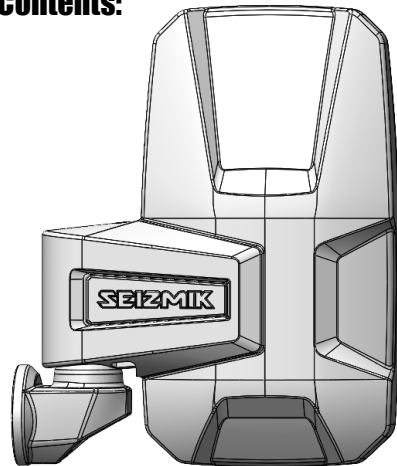


Embark Mirror # 18104 – 1.75" Round Tube

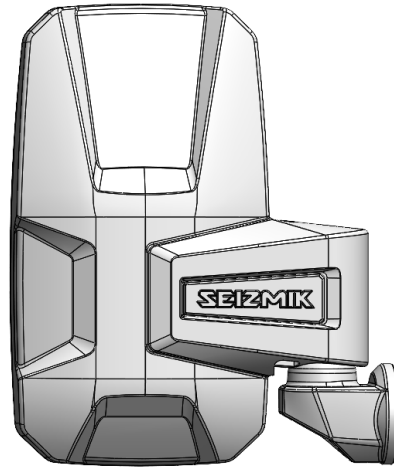
Embark Mirror # 18105 – 2" and 1.875" Round Tube

Installation & Operations Manual for Embark Mirror

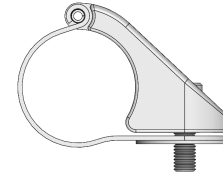
Contents:



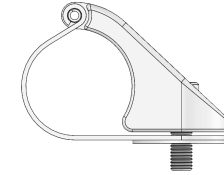
Left Mirror



Right Mirror



Roll cage clamp assembly
(2.00" & 1.875" ONLY)



Roll cage clamp assembly
(1.75" ONLY)



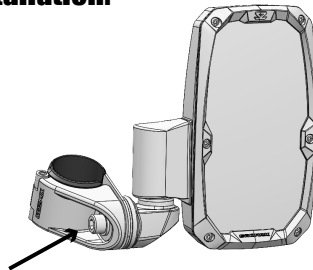
Rubber Shim (Thick) x2
(1.75" & 1.875" ONLY)



Rubber Shim (Thin) x2
(2.00" ONLY)

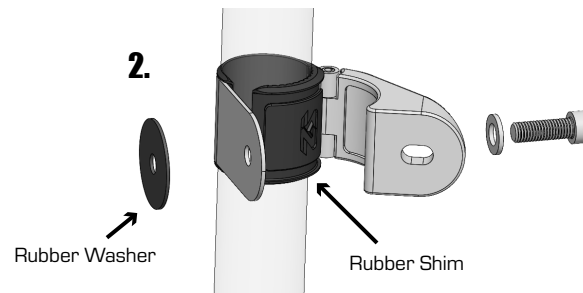
Installation:

1.



Temporarily remove this socket head bolt using an 8mm Allen Wrench

2.

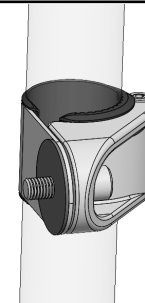


Rubber Washer

Rubber Shim

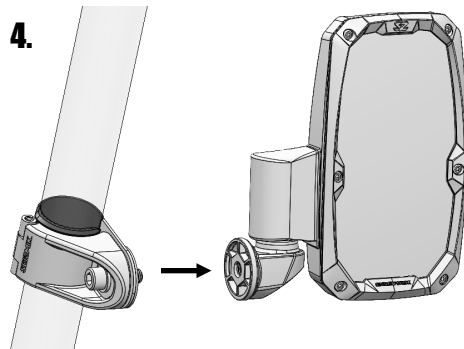
Open clamp and place around roll cage tube. Use thicker shim for 1.75" and 1.875" roll cage. Use thinner shim for 2.00" roll cage

3.



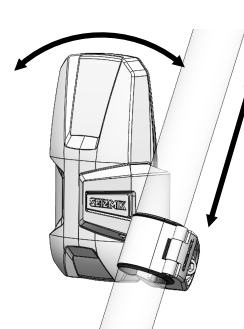
Close clamp around roll cage tube, put the bolt through the hole, and place large rubber washer over the end of the bolt.

4.



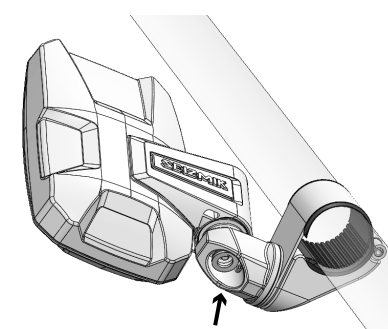
Using an 8mm Allen wrench, screw the bolt into the mirror but do not tighten yet.

5.



Rotate mirror on clamp so that it is level. When you are satisfied with the location and angle, tighten bolt.

6.



To tighten the folding feature of the mirror, tighten tension adjustment nut on the bottom of the mirror arm.

[View other motorcycle frames and body made by Seizmik on our website.](#)