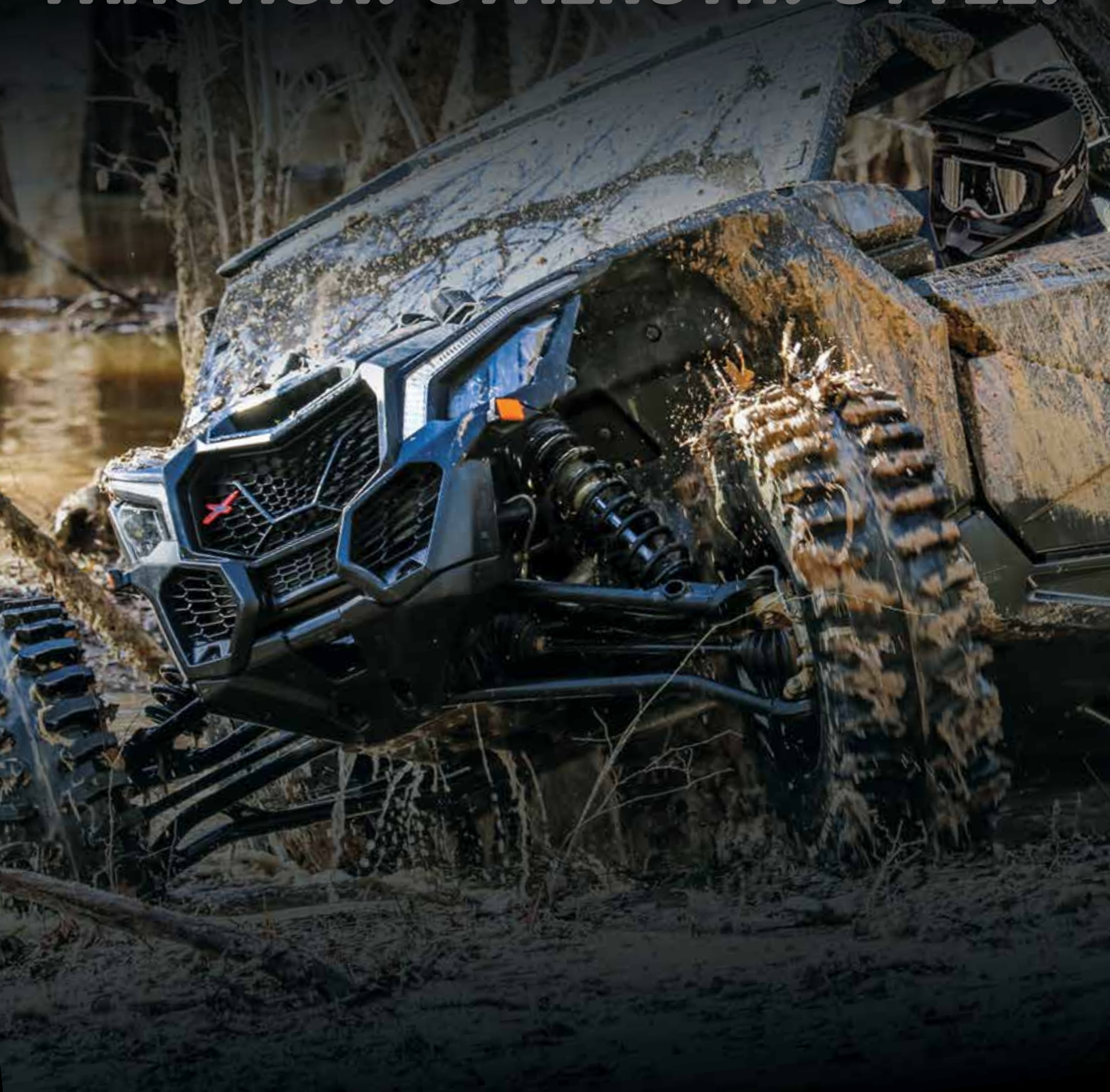


SYSTEM3
OFF-ROAD

TRACTION. STRENGTH. STYLE.



OUR MISSION /

TRACTION. STRENGTH. STYLE.

We're like you; we ride off-road as often as possible. On top of that, our team of industry professionals has decades of experience in the off-road tire and wheel business. We understand the products and the vehicles. When engineering and manufacturing every System-3 tire and wheel, we stick to our system to prioritize the three fundamentals - traction, strength, style.

That's the System-3 Off-Road difference. We deliver cutting-edge products, engineered with careful attention to every detail. We focus on tread depth and angles, wheel offsets and fitment, high-performance traction and durability, manufactured sizes and weights, and unmatched style.



TRACTION

It's easy to think this is simply about tread patterns. But traction is much more than that. A tire's sidewall design, carcass flexibility, rubber compound and its durability, the tire width and its application on a wheel. All that impacts traction - and impacts our work every day.

STRENGTH

Tires need a balanced strength that delivers the right carcass durability with a weight that is performance-focused. The structural strength of a wheel and its ability to shoulder a load means a wheel's strength is about more than just durability. We engineer for strength in tires and wheels.

STYLE

Form and function are part of our work day to day. We know that's important to you as well, even if the tire and wheel is submerged in a mud hole.

ALL-NEW TIRE

XC450

TIRES /

X-COUNTRY

Mixed terrain tread pattern; tight center-block spacing & open channel shoulders excel on both hard pack & loose terrains.

10-ply rated carcass features advanced sidewall construction for a sure footed, comfortable ride.

Super-deep rim guard offers unmatched wheel protection.

Tread depth .70" to .85".



XC450 SIZE	PLY RATING	TREAD DEPTH (in.)	MAX LOAD (lbs.) at 18 PSI	TIRE WEIGHT (lbs.)	TUCKER PART #
28x10R-14	10	.70 - .85	1,160 LBS	37.0 LBS	522867
30x10R-14	10	.70 - .85	1,320 LBS	41.2 LBS	522868
32x10R-14	10	.70 - .85	1,520 LBS	45.8 LBS	522869
30x10R-15	10	.70 - .85	1,300 LBS	41.7 LBS	522870
32x10R-15	10	.70 - .85	1,475 LBS	45.4 LBS	522871
33x10R-15	10	.70 - .85	1,575 LBS	49.8 LBS	522872
35x10R-15	10	.70 - .85	1,719 LBS*	56.2 LBS	522873

*Max Load Capacity @ 24 PSI. See vehicle label or owners manual for operating pressure

SYSTEM 3
OFF-ROAD

XT400

EXTREME TRAIL

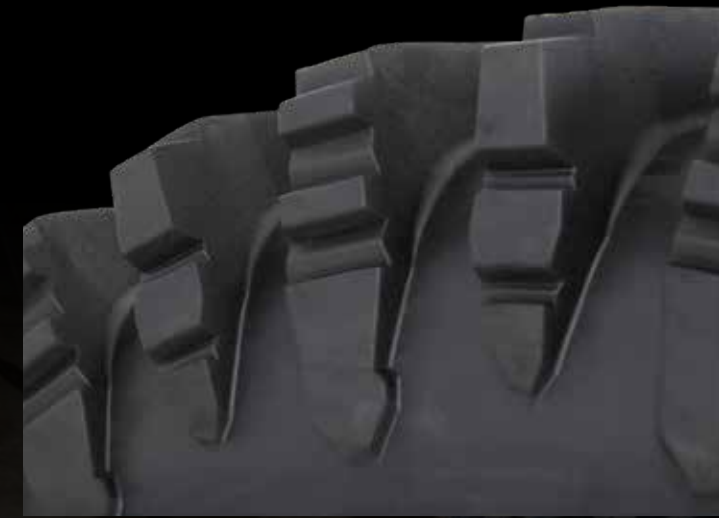
Unique new tire combines the radial carcass of the XTR370 tire with the mud-ready tread of the XM line to create an innovative 10-inch wide smooth-running mud-trail hybrid.

Advanced 10-ply rated radial carcass blends the best of flexibility and durability.

1.25 - 2.0 inch deep multi-angle, dual-stage lugs dig in any direction.

Super aggressive shoulder lugs pull through deep ruts.

Deep rim guard protects wheel lips and helps avoid pinch flats.



XT400 SIZE	PLY RATING	TREAD DEPTH (in.)	MAX LOAD (lbs.) at 18 PSI	TIRE WEIGHT (lbs.)	TUCKER PART #
27x10R-14	10	1.125-1.50	1,116 LBS	41.9 LBS	522658
28x10R-14	10	1.125-1.50	1,185 LBS	44.8 LBS	522660
30x10R-14	10	1.125-1.50	1,341 LBS	47.6 LBS	522661
32x10R-14	10	1.125-1.50	1,530 LBS	51.1 LBS	522662
30x10R-15	10	1.125-1.50	1,317 LBS	48.0 LBS	522814 NEW
32x10R-15	10	1.125-1.50	1,491 LBS	51.8 LBS	522663
33x10R-15	10	1.125-1.50	1,599 LBS	52.9 LBS	522664
35x10R-15	10	1.125-1.50	1,719 LBS	58.9 LBS	522815 NEW
33x9.50R-20	10	1.50 - 2.0	1,356 LBS	51.1 LBS	522665
35x9.50R-20	10	1.50 - 2.0	1,536 LBS	55.8 LBS	522666
37x9.50R-22	10	1.50 - 2.0	1,647 LBS	61.3 LBS	522667
40x9.50R-24	10	1.50 - 2.0	1,869 LBS	72.3 LBS	522668

XTR370

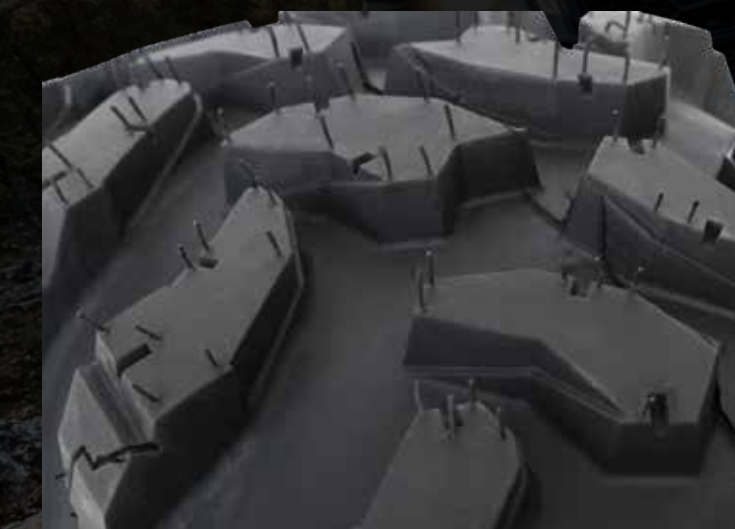
X-TERRAIN RADIAL

Tough 8-ply carcass with advanced sidewall construction for a sure-footed, comfortable ride experience.

Deep tread: from 0.75-1.0 inches (28 to 32-inch tires) and 1.0-1.25 inches (33-inch + tires)

Aggressive, multi-angle tread blocks at the shoulder for improved side bite.

Super-deep rim guard offers unmatched protection for your wheels and helps eliminate pinch flats.



XTR370 SIZE	PLY RATING	TREAD DEPTH (in.)	MAX LOAD (lbs.) at 18 PSI	TIRE WEIGHT (lbs.)	TUCKER PART #
27x9R-14	8	.75	1,005 LBS	31.2 LBS	522809 NEW
27x11R-14	8	.75	1,230 LBS	38.5 LBS	522810 NEW
28x10R-14	8	.75	1,185 LBS	37.2 LBS	522144
30x10R-14	8	.75	1,341 LBS	41.4 LBS	522145
30x10R-15	8	.75	1,317 LBS	41.9 LBS	522151
32x10R-14	8	.75	1,530 LBS	45.9 LBS	522146
32x10R-15	8	.75	1,491 LBS	45.6 LBS	522147
33x10R-15	8	1.0	1,599 LBS	53.6 LBS	522152
35x10R-15	8	1.0	1,719 LBS	59.1 LBS	522153
37x10R-15	8	1.0	1,833 LBS	63.8 LBS	522811 NEW
35x10R-20	8	1.125	1,353 LBS	55.1 LBS	522154
37x10R-22	8	1.125	1,716 LBS	57.2 LBS	522812 NEW
40x10R-24	8	1.125	1,941 LBS	66.0 LBS	522813 NEW

SS360



SAND & SNOW

The unique tread design provides an all-terrain feel on any UTV, with a performance style that carves through corners.

Provides the best combination of cornering and straight-line propulsion.

Lightweight, two-ply carcass and low rolling resistance reduce stress on a vehicle's belt and driveline.

Tread depth up to 16mm, and 20mm for HP model. New HP tire recommended for high-horsepower turbo UTVs.

28-inch sizes are ideal for ATV snow applications.

XCR350



X-COUNTRY RADIAL

8-ply carcass is light and flexible for superior ride quality.

Medium compound lets tread blocks flex for predictable and precise handling.

Multi-angle blocks, plus staggered shoulder tread for big bite.

Flotation style carcass grabs traction on the hard-pack and on loose terrains.

Low rolling resistance.



SS360 SIZE	PLY RATING	TREAD DEPTH (in.)	MAX LOAD (lbs.) at 18 PSI	TIRE WEIGHT (lbs.)	TUCKER PART #
28x10-14	2	.63	695	21.0 LBS	522596
28x12-14	2	.63	825	24.5 LBS	522597
30x10-14	2	.63	780	23.0 LBS	522560
30x12-14	2	.63	910	26.0 LBS	522561
31x10-15	2	.63	825	24.2 LBS	522884 NEW
31x12-15	2	.63	965	28.0 LBS	522885 NEW
32x10-15	2	.63	880	25.6 LBS	522576
32x12-15	2	.63	1,020	28.4 LBS	522577
32x12-15 HP	2	.80	1,020	33.3 LBS	522598
33x10-15	2	.63	935	28.2 LBS	522886 NEW
33x12-15	2	.63	1,100	31.4 LBS	522887 NEW
33x12-15HP	2	.80	1,100	33.4 LBS	522610 NEW



XCR350 SIZE	PLY RATING	TREAD DEPTH (in.)	MAX LOAD (lbs.) at 18 PSI	TIRE WEIGHT (lbs.)	TUCKER PART #
28x10R-14	8	.625	803 LBS	37.0 LBS	521510
30x10R-14	8	.625	906 LBS	39.7 LBS	521511
32x10R-15	8	.625	1,016 LBS	41.2 LBS	521512
33x10R-15	8	.625	1,070 LBS	46.7 LBS	522709 NEW
35x10R-15	8	.625	1,205 LBS	53.8 LBS	521713
36x10R-18	8	.625	1,199 LBS	47.0 LBS	521513



TIRES /

RT320

RACE & TRAIL

Race-ready, non-directional mixed terrain design.

Pulls hard on loose surfaces, rides smooth and quiet on hard pack.

8-ply rated carcass is lightweight and features a wide contact patch.

High-mileage rubber compound for long life.



RT320 SIZE	PLY RATING	TREAD DEPTH (in.)	MAX LOAD (lbs.) at 18 PSI	WEIGHT (lbs.)	TUCKER PART #
28 x 10R-14	8	0.65	740	33.8	521427
30 x 10R-14	8	0.65	1,000	37.9	521428
32 x 10R-15	8	0.65	1,000	41.6	521429
33 x 9.5R-15	8	0.65	1,020	39.8	521709
35 x 9.5R-15	8	0.65	1,020	43.0	521710

XM310R

EXTREME MUD

2-inch deep angular, dual-stage lugs with big side bite.

Outperforms ag and V-style mud tread.

8-ply carcass is light and strong.



XM310 R SIZE	PLY RATING	TREAD DEPTH (in.)	MAX LOAD (lbs.) @ 18 PSI	WEIGHT (lbs.)	TUCKER PART #
34 x 9-20	8	1.6 - 2.0	1,167	48.0	521715
35 x 9-20	8	1.6 - 2.0	1,236	50.2	521716
36 x 9-20	8	1.6 - 2.0	1,335	53.2	521717

XM310

EXTREME MUD

2-inch deep, higher-angle dual-stage lugs.

Light, 8-ply rated carcass.

Deep rim guard gives outstanding wheel protection.



XM310 SIZE	PLY RATING	TREAD DEPTH (in.)	MAX LOAD (lbs.) @ 18 PSI	WEIGHT (lbs.)	TUCKER PART #
28 x 9.5-14	8	1.5 - 2.0	954	36.7	521714
29 x 9.5-14	8	1.5 - 2.0	1,020	40.0	521432
31 x 9.5-14	8	1.5 - 2.0	1,164	41.8	521433
33 x 9.5-18	8	1.5 - 2.0	1,206	45.1	521434
35 x 9.5-18	8	1.6 - 2.0	1,371	51.9	521435

WHEELS /

ALL-NEW WHEEL

SB-7

BEADLOCK

- Classic Baja styling
- Super heavy duty construction with 12mm billet ring
- 20 5/16" Grade 8 beadlock bolts secure the ring the wheel
- Factory-installed valve stem and bolt-in center cap
- 1,200 lbs. load rating



15 X 7 TITANIUM



15 X 7 MATTE BLACK



NEW 15 X 7 MACHINED



SB-7 SIZE	BOLT PATTERN	OFFSET	FINISH	COLOR	TUCKER PART #
14x7	4/137	4+3 (+10mm)	Matte	Black	522949
14x7	4/156	4+3 (+10mm)	Matte	Black	522950
14x7	4/137	4+3 (+10mm)	Matte	Titanium	522951
14x7	4/156	4+3 (+10mm)	Matte	Titanium	522952
15x7	4/137	4+3 (+10mm)	Matte	Black	522953
15x7	4/137	5+2 (+38mm)	Matte	Black	522954
15x7	4/137	6+1 (+45mm)	Matte	Black	522955
15x7	4/156	4+3 (+10mm)	Matte	Black	522956
15x7	4/156	5+2 (+38mm)	Matte	Black	522957
15x7	4/156	6+1 (+45mm)	Matte	Black	522958
15x7	5/4.5	6+1 (+50mm)	Matte	Black	522959
15x7	4/137	4+3 (+10mm)	Matte	Titanium	522960
15x7	4/137	5+2 (+38mm)	Matte	Titanium	522961
15x7	4/137	6+1 (+45mm)	Matte	Titanium	522962
15x7	4/156	4+3 (+10mm)	Matte	Titanium	522963
15x7	4/156	5+2 (+38mm)	Matte	Titanium	522964
15x7	4/156	6+1 (+45mm)	Matte	Titanium	522965
15x7	5/4.5	6+1 (+50mm)	Matte	Titanium	522966
15x7	4/137	5+2 (+38mm)	Gloss	Machined	522967
15x7	4/137	6+1 (+45mm)	Gloss	Machined	522968
15x7	4/156	5+2 (+38mm)	Gloss	Machined	522969
15x7	4/156	6+1 (+45mm)	Gloss	Machined	522970
15x7	5/4.5	6+1 (+50mm)	Gloss	Machined	522971
15x10	4/137	5+5 (-5mm)	Matte	Black	522972
15x10	4/156	5+5 (-5mm)	Matte	Black	522973
15x10	5/4.5	5+5 (-5mm)	Matte	Black	522974
15x10	4/137	5+5 (-5mm)	Gloss	Machined	522975
15x10	4/156	5+5 (-5mm)	Gloss	Machined	522976
15x10	5/4.5	5+5 (-5mm)	Gloss	Machined	522977

WHEELS /

ALL-NEW WHEEL

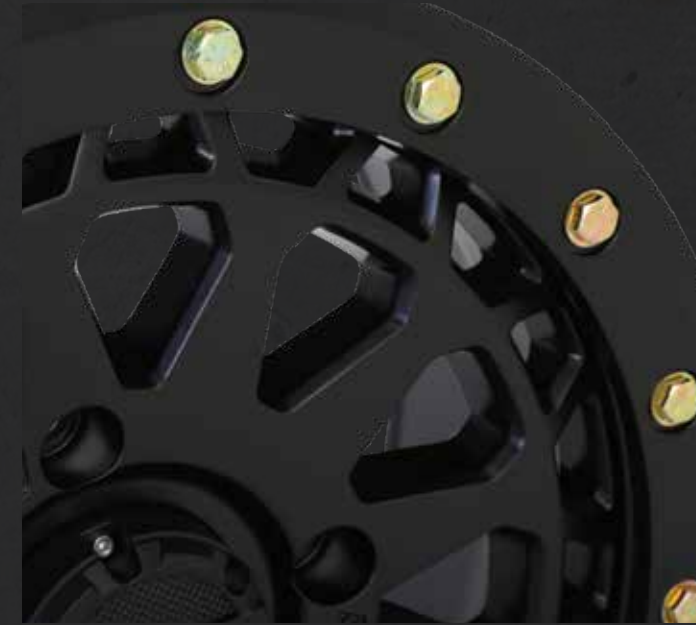
SB-6

BEADLOCK

- Aggressive multi-spoke styling
- Extra heavy-duty construction with 10mm billet ring
- 5/16" Grade 8 beadlock hardware
- Factory-installed valve stem and bolt-in center cap
- 1,200lb load rating



15 X 7 GUNMETAL GREY



15 X 7 MATTE BLACK



15 X 7 MACHINED



SB-6 SIZE	BOLT PATTERN	OFFSET	FINISH	COLOR	TUCKER PART #
15x7	4/137	5+2 (+38mm)	Matte	Black	522936
15x7	4/137	6+1 (+45 mm)	Matte	Black	522937
15x7	4/156	5+2 (+38mm)	Matte	Black	522938
15x7	4/156	6+1 (+45 mm)	Matte	Black	522939
15x7	5/4.5	6+1 (+50 mm)	Matte	Black	522940
15x7	4/137	5+2 (+38mm)	Matte	Gun Metal Grey	522941
15x7	4/137	6+1 (+45 mm)	Matte	Gun Metal Grey	522942
15x7	4/156	5+2 (+38mm)	Matte	Gun Metal Grey	522943
15x7	4/156	6+1 (+45 mm)	Matte	Gun Metal Grey	522944
15x7	5/4.5	6+1 (+50 mm)	Matte	Gun Metal Grey	522945
15x7	4/137	6+1 (+45 mm)	Matte	Machined	522946
15x7	4/156	6+1 (+45 mm)	Matte	Machined	522947
15x7	5/4.5	6+1 (+50 mm)	Matte	Machined	522948

WHEELS /

SB-5

BEADLOCK

- Classic 12-spoke style
- 10mm grooved billet beadlock ring is strong and light
- Factory-installed valve stem and bolt-in center cap
- Heavy-duty inner and outer wheel lip
- 5/16-in. Grade 8 beadlock hardware
- 1200-pound load rating
- Additional Ring Bolt Holes for added insurance"



15 X 7 GUNMETAL GREY



15 X 7 BLACK



SB-5 SIZE	BOLT PATTERN	OFFSET	FINISH	COLOR	TUCKER PART #
14 x 7	4/137	5+2 (+38mm)	Matte	Black	522085
14 x 7	4/137	5+2 (+38mm)	Matte	Gunmetal Grey	522087
14 x 7	4/156	5+2 (+38mm)	Matte	Black	522086
14 x 7	4/156	5+2 (+38mm)	Matte	Gunmetal Grey	522088
15 x 7	4/137	5+2 (+38mm)	Matte	Black	522089
15 x 7	4/137	5+2 (+38mm)	Matte	Gunmetal Grey	522091
15 x 7	4/156	5+2 (+38mm)	Matte	Black	522090
15 x 7	4/156	5+2 (+38mm)	Matte	Gunmetal Grey	522092
15 x 10	4/137	5+5 (-5mm)	Matte	Black	522696
15 x 10	4/137	5+5 (-5mm)	Matte	Gunmetal Grey	522698
15 x 10	4/156	5+5 (-5mm)	Matte	Black	522697
15 x 10	4/156	5+5 (-5mm)	Matte	Gunmetal Grey	522699

14-INCH COLOR RING	TUCKER PART #
Black	522586
Raw	522587
Red	522588
Blue	522589
White	522590

15-INCH COLOR RING	TUCKER PART #
Black	522591
Raw	522592
Red	522593
Blue	522594
White	522595

WHEELS /

SB-4

BEADLOCK

- 10mm billet ring uses 5/16-in. Grade 8 cad-plated hardware
- Accepts 17mm hex head lug
- Light & strong, with 1200-lb. load rating
- Bolt-in center cap
- Color beadlock rings available



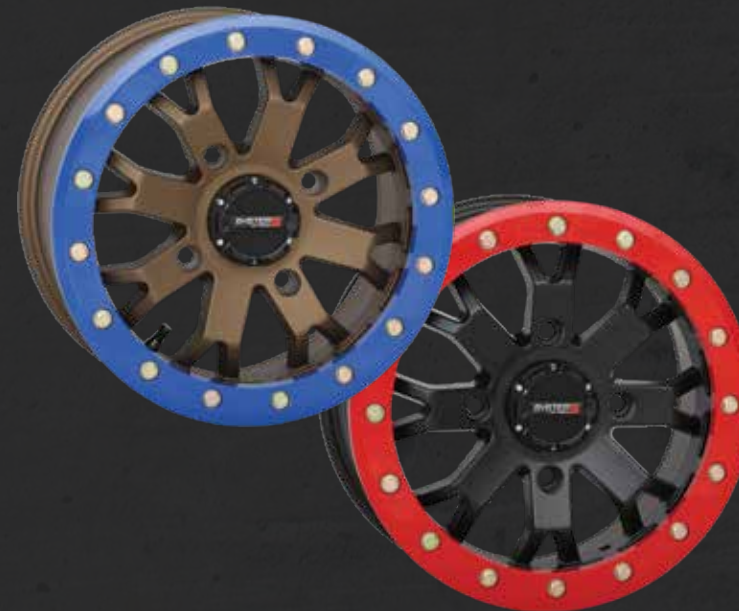
15 X 7 MATTE BLACK



15 X 7 SATIN CEMENT GREY



15 X 10 BRONZE



SB-4 SIZE	BOLT PATTERN	OFFSET	FINISH	COLOR	TUCKER PART #
14x7	4/137	6+1 (+45mm)	Matte	Black	521730
14x7	4/137	4+3 (+15mm)	Matte	Black	521731
14x7	4/137	6+1 (+45mm)	Matte	Bronze/Black	521733
14x7	4/137	4+3 (+15mm)	Matte	Bronze/Black	521734
14x7	4/137	6+1 (+45mm)	Satin	Cement Grey	522066
14x7	4/137	4+3 (+15mm)	Satin	Cement Grey	522067
14x7	4/156	6+1 (+45mm)	Matte	Black	521732
14x7	4/156	4+3 (+15mm)	Matte	Black	522562
14x7	4/156	6+1 (+45mm)	Matte	Bronze/Black	521735
14x7	4/156	4+3 (+15mm)	Matte	Bronze/Black	522563
14x7	4/156	6+1 (+45mm)	Satin	Cement Grey	522068
14x7	4/156	4+3 (+15mm)	Satin	Cement Grey	522069
14x10	4/137	5+5 (-5mm)	Matte	Black	522578
14x10	4/137	5+5 (-5mm)	Matte	Bronze/Black	522580
14x10	4/156	5+5 (-5mm)	Matte	Black	522579
14x10	4/156	5+5 (-5mm)	Matte	Bronze/Black	522581
15x7	4/137	6+1 (+45mm)	Matte	Black	521736
15x7	4/137	4+3 (+15mm)	Matte	Black	521737
15x7	4/137	6+1 (+45mm)	Matte	Bronze/Black	521739
15x7	4/137	4+3 (+15mm)	Matte	Bronze/Black	521740
15x7	4/137	6+1 (+45mm)	Satin	Cement Grey	522070
15x7	4/137	4+3 (+15mm)	Satin	Cement Grey	522694
15x7	4/156	6+1 (+45mm)	Matte	Black	521738
15x7	4/156	4+3 (+15mm)	Matte	Black	522693
15x7	4/156	6+1 (+45mm)	Matte	Bronze/Black	521741
15x7	4/156	6+1 (+45mm)	Satin	Cement Grey	522071
15x7	4/156	4+3 (+15mm)	Satin	Cement Grey	522695
15x10	4/137	5+5 (-5mm)	Matte	Black	522582
15x10	4/137	5+5 (-5mm)	Matte	Bronze/Black	522584
15x10	4/156	5+5 (-5mm)	Matte	Black	522583
15x10	4/156	5+5 (-5mm)	Matte	Bronze/Black	522585

14-INCH RING COLOR	TUCKER PART #
Black	522566
Raw	522567
Red	522568
Blue	522569
White	522570

15-INCH RING COLOR	TUCKER PART #
Black	522571
Raw	522572
Red	522573
Blue	522574
White	522575

WHEELS /

SB-3

BEADLOCK

- 1500-lb. load rating - the strongest cast beadlock on the market
- 10mm billet ring secured with 20 5/16-inch Grade 8 hardware
- Stainless-steel lug inserts - an industry first
- Bolt-in center cap

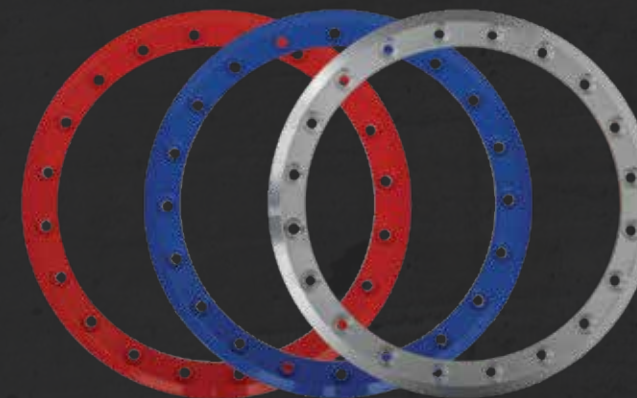


15 X 7 MACHINED / BLACK



15 X 7 BLACK

14 X 10 MACHINED / BLACK



SB-3 SIZE	BOLT PATTERN	OFFSET	FINISH	COLOR	TUCKER PART #
14 x 7	4/110	5+2 (+30mm)	Matte	Machined / Black	521459
14 x 7	4/110	5+2 (+30mm)	Matte	Black	521468
14 x 7	4/137	5+2 (+30mm)	Matte	Machined / Black	521460
14 x 7	4/137	5+2 (+30mm)	Matte	Black	521469
14 x 7	4/156	5+2 (+30mm)	Matte	Machined / Black	521461
14 x 7	4/156	5+2 (+30mm)	Matte	Black	521470
14 x 10	4/137	5+5 (0mm)	Matte	Machined / Black	521463
14 x 10	4/137	5+5 (0mm)	Matte	Black	521472
14 x 10	4/156	5+5 (0mm)	Matte	Machined / Black	521464
14 x 10	4/156	5+5 (0mm)	Matte	Black	521473
15 x 7	4/137	5+2 (+30mm)	Matte	Machined / Black	521466
15 x 7	4/137	5+2 (+30mm)	Matte	Black	521475
15 x 7	4/156	5+2 (+30mm)	Matte	Machined / Black	521467
15 x 7	4/156	5+2 (+30mm)	Matte	Black	521476
15 x 10	4/137	5+5 (0mm)	Matte	Black	521728
15 x 10	4/156	5+5 (0mm)	Matte	Black	521729

14-INCH RING COLOR	TUCKER PART #
Black	521527
Raw	521528
Red	521529
Blue	521530
White	521531

15-INCH RING COLOR	TUCKER PART #
Black	521532
Raw	521533
Red	521534
Blue	521535
White	521536

WHEELS /

ALL-NEW WHEEL

ST-6

- Bold "X" pattern styling
- Factory installed valve stem and bolt in center cap
- Heavy duty inner and outer wheel lip
- 12x7 sizes 1,000 lbs. load rating
- 14x7 sizes 1,200 lbs load rating



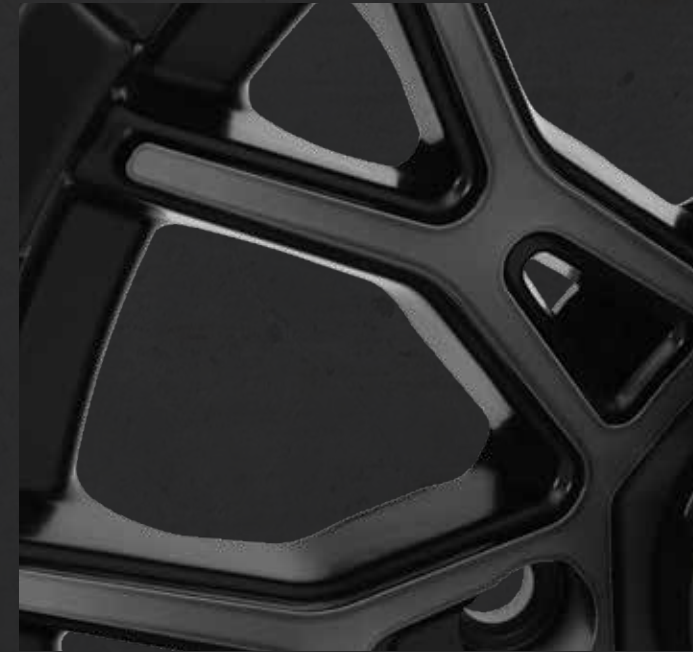
14X7 GLOSS BLACK - MACHINED



12X7 GLOSS BLACK-MACHINED



14X7 DARK TINT



ST-6 SIZE	BOLT PATTERN	OFFSET	FINISH	COLOR	TUCKER PART #
12x7	4/110	4+3 (+10mm)	Gloss	Black/Machined	522928
12x7	4/110	2+5 (-47mm)	Gloss	Black/Machined	522929
12x7	4/110	4+3 (+10mm)	Matte	Dark Tint	522930
12x7	4/110	2+5 (-47mm)	Matte	Dark Tint	522931
14x7	4/137	4+3 (+10mm)	Gloss	Black/Machined	522932
14x7	4/156	4+3 (+10mm)	Gloss	Black/Machined	522933
14x7	4/137	4+3 (+10mm)	Matte	Dark Tint	522934
14x7	4/156	4+3 (+10mm)	Matte	Dark Tint	522935



WHEELS /

ST-5

- 11-spoke Rally style design
- Factory-installed valve stem and bolt-in center cap
- Heavy-duty inner and outer wheel lip
- 1200-pound load rating
- Lifetime limited warranty



15 X 7 GUNMETAL GREY / BLACK



14 X 7 BRONZE / BLACK



14X7 MATTE BLACK



ST-5 SIZE	BOLT PATTERN	OFFSET	FINISH	COLOR	TUCKER PART #
14x7	4/137	4+3 (+10mm)	Matte	Black	522081
14x7	4/137	4+3 (+10mm)	Matte	Bronze/Black	522083
14x7	4/137	4+3 (+10mm)	Matte	Gun Metal Grey/Black	522689
14x7	4/156	4+3 (+10mm)	Matte	Black	522082
14x7	4/156	4+3 (+10mm)	Matte	Bronze/Black	522084
14x7	4/156	4+3 (+10mm)	Matte	Gun Metal Grey/Black	522690
14x10	4/137	5+5 (-5mm)	Matte	Black	522920
14x10	4/137	5+5 (-5mm)	Matte	Gun Metal Grey/Black	522922
14x10	4/156	5+5 (-5mm)	Matte	Black	522921
14x10	4/156	5+5 (-5mm)	Matte	Gun Metal Grey/Black	522923
15x7	4/137	5+2 (+30mm)	Matte	Black	522058
15x7	4/137	5+2 (+30mm)	Matte	Bronze/Black	522093
15x7	4/137	5+2 (+30mm)	Matte	Gun Metal Grey/Black	522691
15x7	4/156	5+2 (+30mm)	Matte	Black	522059
15x7	4/156	5+2 (+30mm)	Matte	Bronze/Black	522094
15x7	4/156	5+2 (+30mm)	Matte	Gun Metal Grey/Black	522692
15x10	4/137	5+5 (-5mm)	Matte	Black	522924
15x10	4/137	5+5 (-5mm)	Matte	Gun Metal Grey/Black	522926
15x10	4/156	5+5 (-5mm)	Matte	Black	522925
15x10	4/156	5+5 (-5mm)	Matte	Gun Metal Grey/Black	522927

WHEELS /

ST-4

- Factory-installed valve stem and bolt-in center cap
- Heavy-duty inner and outer wheel lip
- 1000-pound load rating
- Stout 8-spoke style



14 X 7 BLACK / MACHINED



20 X 6.5 BLACK / MACHINED



ST-4 SIZE	BOLT PATTERN	OFFSET	FINISH	COLOR	TUCKER PART #
14 x 7	4/110	4+3 (+10mm)	Gloss	Black / Machined	522072
14 x 7	4/110	2+5 (-47mm)	Gloss	Black / Machined	522679
14 x 7	4/110	4+3 (+10mm)	Gloss	Black / Red	522682
14 x 7	4/110	2+5 (-47mm)	Gloss	Black / Red	522683
14 x 7	4/137	4+3 (+10mm)	Gloss	Black / Machined	522073
14 x 7	4/137	4+3 (+10mm)	Gloss	Black / Blue	522680
14 x 7	4/137	4+3 (+10mm)	Gloss	Black / Red	522684
14 x 7	4/156	4+3 (+10mm)	Gloss	Black / Machined	522074
14 x 7	4/156	4+3 (+10mm)	Gloss	Black / Blue	522681
14 x 7	4/156	4+3 (+10mm)	Gloss	Black / Red	522685
20 x 6.5	4/137	4+2.5 (+10mm)	Gloss	Black / Machined	522075
20 x 6.5	4/137	4+2.5 (+10mm)	Gloss	Black / Blue	522686
20 x 6.5	4/137	4+2.5 (+10mm)	Gloss	Black / Red	522687
20 x 6.5	4/156	4+2.5 (+10mm)	Gloss	Black / Machined	522076
20 x 6.5	4/156	4+2.5 (+10mm)	Gloss	Black / Blue	522705
20 x 6.5	4/156	4+2.5 (+10mm)	Gloss	Black / Red	522688

WHEELS /

ST-3

- Our most popular wheel style, featuring sizes from 14 inch to 24 inch!
- Large lug holes accommodate most hex head lug nuts
- Flow-form manufacturing process makes our new wheel the lightest and strongest 24-inch cast wheel on the market
- 1000-pound load rating
- Bolt-in center cap



14X7 BRONZE



20X6.5 GUNMETAL GREY



22X6.5 MATTE BLACK

ST-3 SIZE	BOLT PATTERN	OFFSET	FINISH	COLOR	TUCKER PART #
14x7	4/110	5+2 (+30mm)	Matte	Machined/Black	521441
14x7	4/110	5+2 (+30mm)	Matte	Black	521447
14x7	4/110	5+2 (+30mm)	Matte	Bronze/Black	521453
14x7	4/137	5+2 (+30mm)	Matte	Machined/Black	521442
14x7	4/137	5+2 (+30mm)	Matte	Black	521448
14x7	4/137	5+2 (+30mm)	Matte	Bronze/Black	521454
14x7	4/156	5+2 (+30mm)	Matte	Machined/Black	521443
14x7	4/156	5+2 (+30mm)	Matte	Black	521449
14x7	4/156	5+2 (+30mm)	Matte	Bronze/Black	521455
15x7	4/137	5+2 (+40mm)	Matte	Black	521718
15x7	4/137	5+2 (+40mm)	Matte	Bronze/Black	521720
15x7	4/156	5+2 (+40mm)	Matte	Black	521719
15x7	4/156	5+2 (+40mm)	Matte	Bronze/Black	521721
18x7	4/137	4+3 (+10mm)	Matte	Machined/Black	521445
18x7	4/137	4+3 (+10mm)	Matte	Black	521451
18x7	4/137	4+3 (+10mm)	Matte	Bronze/Black	521457
18x7	4/156	4+3 (+10mm)	Matte	Machined/Black	521446
18x7	4/156	4+3 (+10mm)	Matte	Black	521452
18x7	4/156	4+3 (+10mm)	Matte	Bronze/Black	521458
20x6.5	4/137	4+2.5 (+10mm)	Gloss	Machined/Black	521722
20x6.5	4/137	4+2.5 (+10mm)	Matte	Black	521724
20x6.5	4/137	4+2.5 (+10mm)	Matte	Bronze/Black	521726
20x6.5	4/137	4+2.5 (+10mm)	Matte	Gun Metal Grey/Black	522669
20x6.5	4/156	4+2.5 (+10mm)	Gloss	Machined/Black	521723
20x6.5	4/156	4+2.5 (+10mm)	Matte	Black	521725
20x6.5	4/156	4+2.5 (+10mm)	Matte	Bronze/Black	521727
20x6.5	4/156	4+2.5 (+10mm)	Matte	Gun Metal Grey/Black	522670
22x6.5	4/137	4+2.5 (+10mm)	Matte	Black	522671
22x6.5	4/137	4+2.5 (+10mm)	Matte	Gun Metal Grey	522673
22x6.5	4/156	4+2.5 (+10mm)	Matte	Black	522672
22x6.5	4/156	4+2.5 (+10mm)	Matte	Gun Metal Grey	522674
24x6.5	4/137	4+2.5 (+10mm)	Matte	Black	522675
24x6.5	4/137	4+2.5 (+10mm)	Matte	Gun Metal Grey	522677
24x6.5	4/156	4+2.5 (+10mm)	Matte	Black	522676
24x6.5	4/156	4+2.5 (+10mm)	Matte	Gun Metal Grey	522678

SYSTEM 3
OFF-ROAD

TRACTION.




STRENGTH.

STYLE.

Visit system3offroad.com for the latest photos and specs,
product application info, warranty forms, and news.

system3offroad.com @system3offroad

Info@system3offroad.com
714 / 501-1394

 [system3offroad](https://www.instagram.com/system3offroad)  [system3offroad](https://www.facebook.com/system3offroad)  [System 3 Off-Road](https://www.youtube.com/System3Off-Road)