



VIPER Winch Mount

MA11906T

Polaris RZR Turbo

Thank you for purchasing our VIPER winch mount. You now own a premium custom winch mount which allows you to use your winch with your UTV / SxS. Please note the following instructions and heed all warnings.

- Please use common sense when operating your UTV / SxS
- Read your Winch Operators Manual and all other operator manuals, including warning labels, before operating your UTV / SxS
- Be observant of moving parts causing entanglement, use extreme caution!

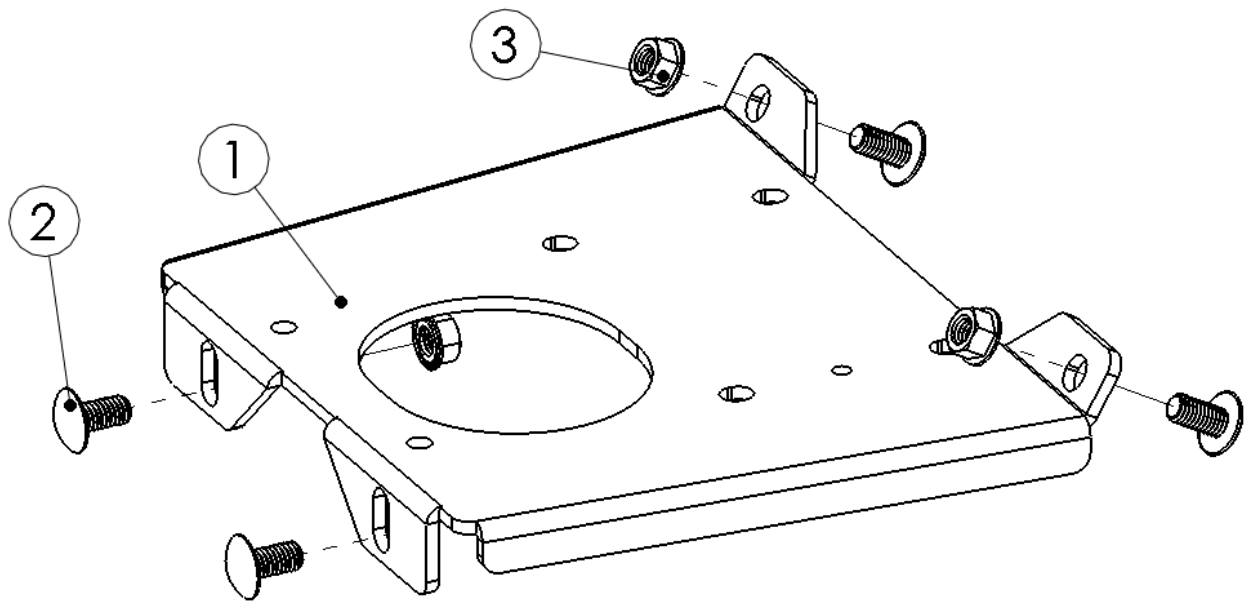
SEVERE INJURY OR DEATH MAY RESULT IF YOU ARE NEGLIGENT.

MA11906T
VIPER Polaris RZR Turbo Winch Mount

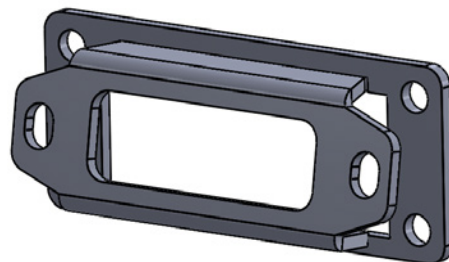
Please verify that all hardware and parts are included in your package.

Kit Contents:

Item	Description	QTY
1	MA11906T-1 Mount Plate	1
2	3/8"-16 x 1" Grade 5 Carriage Bolt	4
3	3/8"-16 Serrated Flange Nut	4
4	MA11906-3 Fairlead Bracket (Second picture below)	1



MA11906T Winch Mount Assembly View



MA11906-3 Fairlead

VIPER Polaris RZR Turbo Winch Mount

- 1) Although not necessary, the winch installation is simpler if the front metal bumper and front plastic brush guard are removed. The metal bumper is removed via four Hex bolts, two of which are hidden beneath plastic cover plates.
- 2) To remove the plastic brush guard, first unclip the two head light wiring harnesses. Then remove the plastic winch cover plate using the appropriate socket size. Lastly, remove the eight (8) T40 Torx screws as shown in Figure 1. Set the brush guard aside.

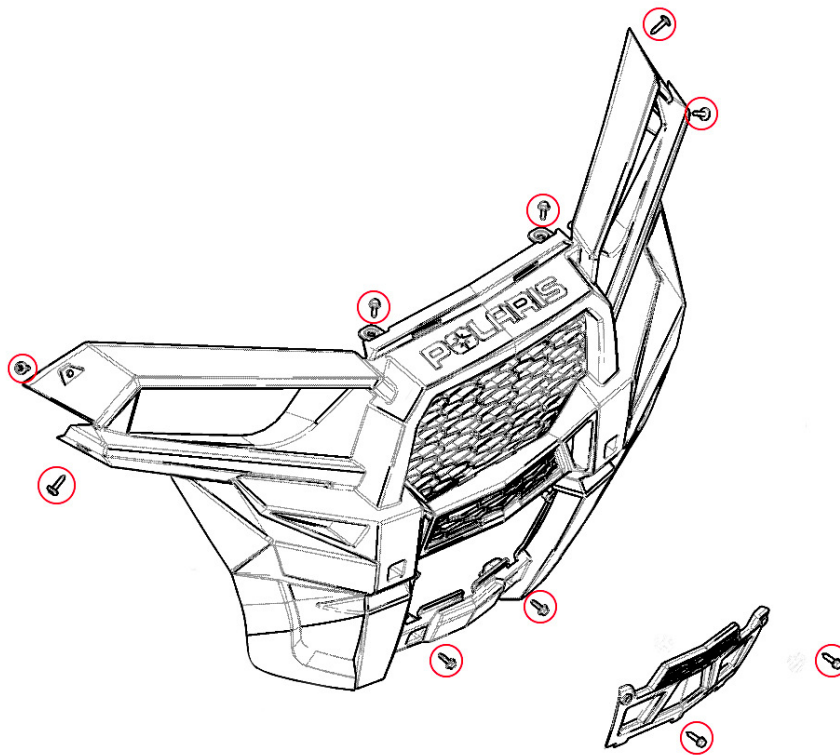


Figure 1

- 3) Loosen the clear differential breather line and push the extra line down toward the differential, as shown in Figure 2, to allow the hose to be moved around later in the install.

VIPER Polaris RZR Turbo Winch Mount

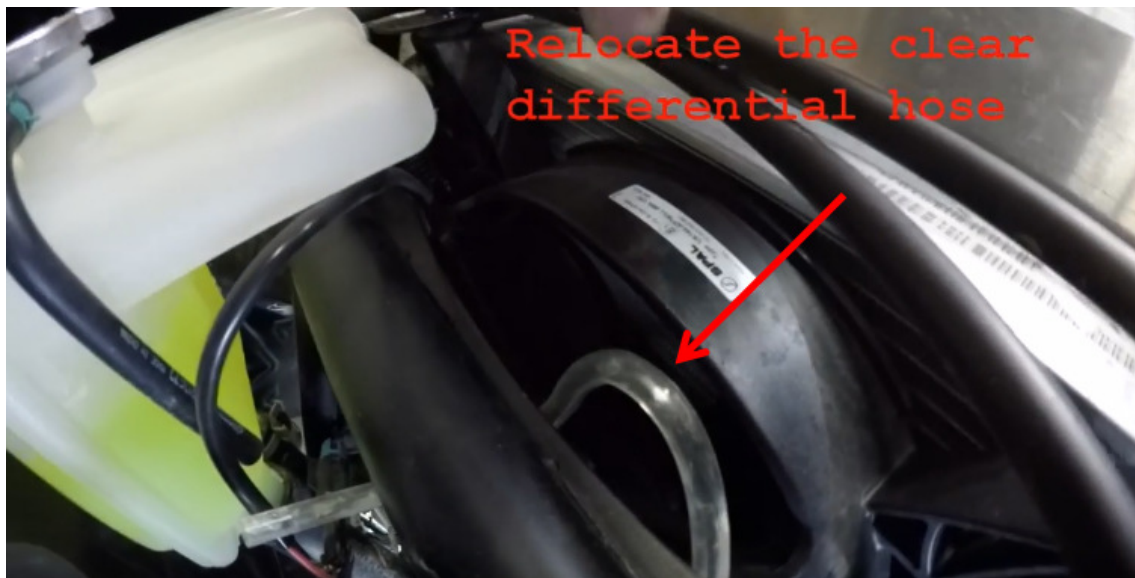


Figure 2

- 4) Rotate the breather hose clip 90 degrees, as shown in Figure 3, so that the cable will not contact the clip later.

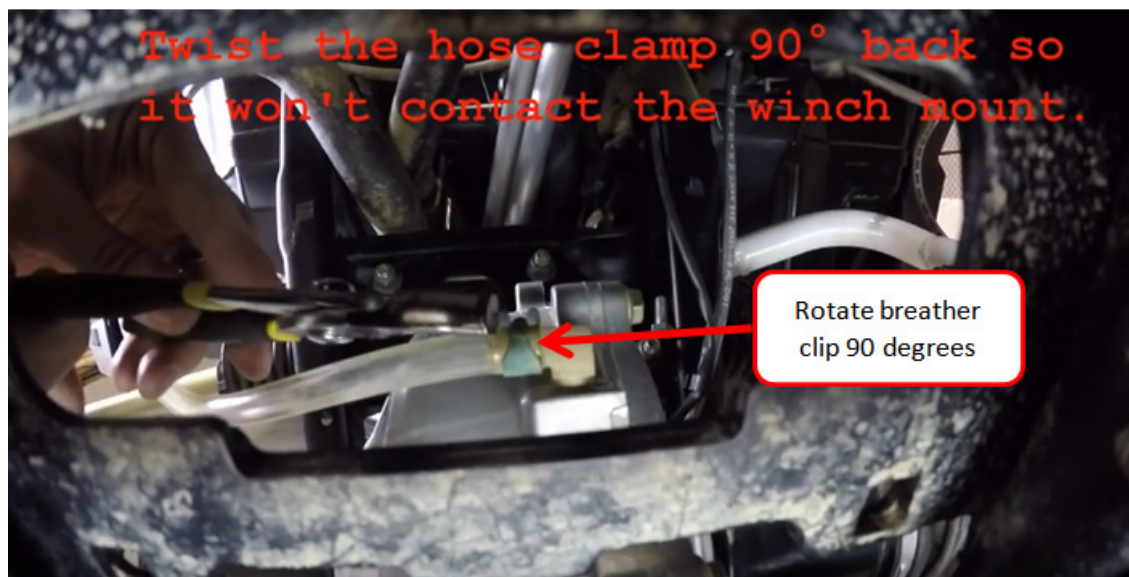


Figure 3

VIPER Polaris RZR Turbo Winch Mount

- 5) Insert the MA11906T-1 Mount Plate (part #1) on top of the front differential from the driver side of the vehicle. Position the mount plate over the differential and ensure that the brake line is not pinched by the plate, as shown in Figure 4 & 5. Do not use any bolts to attach it at this time.

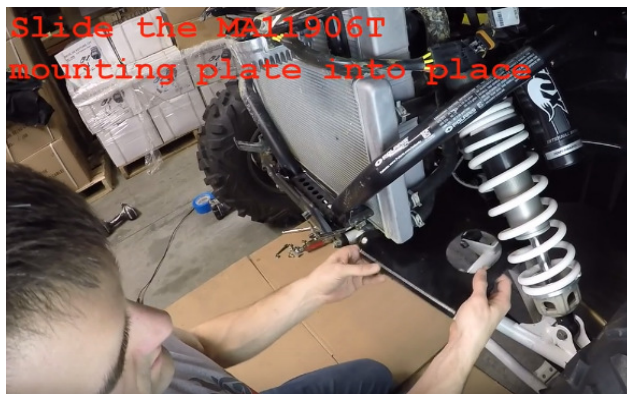


Figure 4

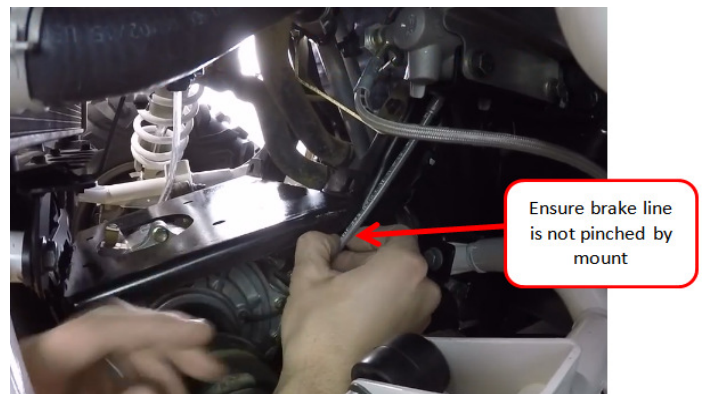


Figure 5

- 6) Removed the four flanged bolts and install the MA11906-3 Fairlead Bracket (part #4) included in the kit. Reuse the four flanged bolts and tighten using an open ended wrench. Install your winch's fairlead to the fairlead bracket using the hardware included in your winch kit as shown in Figure 6 & 7.

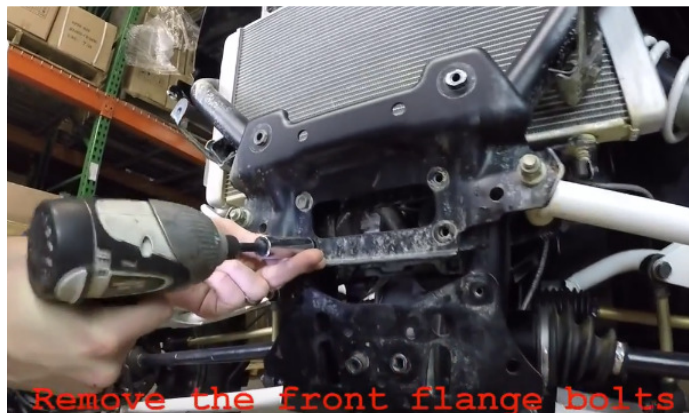


Figure 6

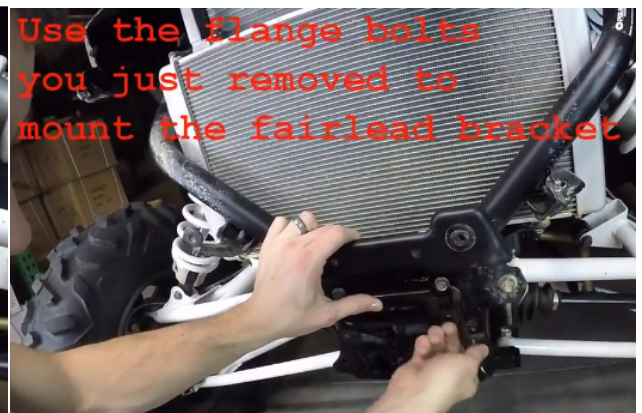


Figure 7

- 7) If your kit includes an optional rubber line stopper, install that now. Remove the cable from the winch and thread the end of the cable first through the line stopper, then the aluminum hawse or roller fairlead, then through the fairlead plate, then through the opening in the vehicle's frame. Reattach the cable to the winch. See Figure 8 for an expanded view.

VIPER Polaris RZR Turbo Winch Mount

NOTE: Figure 8 shows winch and winch mount fully installed. At this point the winch is not installed.

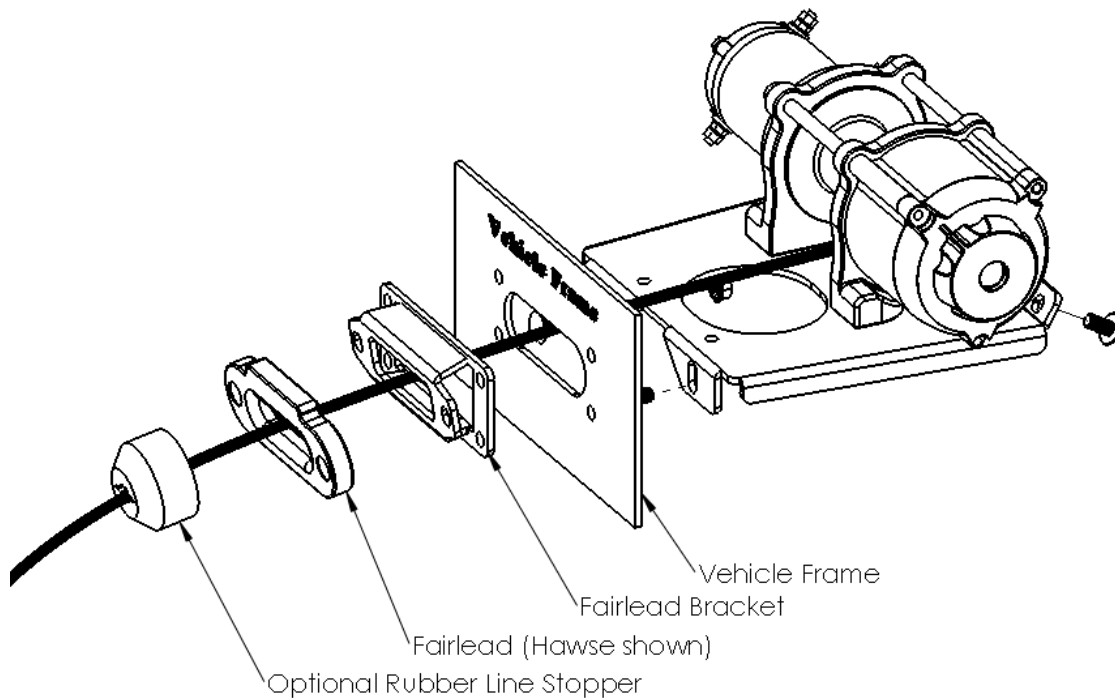


Figure 8

- 8) Insert the winch from the passenger side of the vehicle; you may need to push the differential breather tube out of the way. The motor end should be facing the passenger side of the vehicle. See Figure 9 for orientation.

NOTE: The mount plate and winch are loosely sitting on top of the differential.

- 9) Using two (2) of the supplied M8x20mm bolts in the winch kit, attach the rear mounting holes of the winch to the mount plate.
- 10) Using two (2) of the supplied 3/8" Carriage Bolts (part #2), attach the rear two holes of the mount bracket to the square holes in the RZR Turbo frame. The bolts should enter from the back side of the RZR frame. The winch and mount plate will have to be lifted into place to insert these bolts. Loosely secure the mount plate using the 3/8" Serrated Flange Nuts (part #3).

VIPER Polaris RZR Turbo Winch Mount

- 11) Lift the front end of the mount plate into position and insert the two remaining 3/8" Carriage Bolts from the front of the RZR. Secure using the remaining 3/8" Serrated Flange Bolts. Tighten the 3/8" hardware.

**Figure 9**

- 12) Install the remaining two M8x20mm winch mounting bolts and tighten these bolts.
- 13) Reinstall the plastic brush guard. It is easiest to position the brush guard and begin by install two of the Torx screws in the center two holes in front of the radiator. Proceed with the remaining Torx bolts. Install the headlight wiring harnesses.
NOTE: It may be necessary to trim a small amount of plastic on the front brush guard to eliminate interference with the fairlead.
- 14) Reinstall the metal bumper in reverse order.

MA11906T



VIPER Polaris RZR Turbo Winch Mount

- 15) **ALWAYS DISCONNECT THE NEGATIVE BATTERY TERMINAL WHEN WORKING WITH YOUR VEHICLES ELECTRICAL SYSTEM.**

Wire your winch using the manufacturer's wiring schematic. The contactor can be mounted under the driver seat and next to the battery. Route the cables through the center tunnel.

NOTE: Route cables away from moving, sharp or hot areas. It may be necessary to purchase an extended wiring kit depending on the vehicle size.

