



motoalliance

VIPER Winch Mount

MA11990

John Deere Gator XUV 625i/825i/855D

Thank you for purchasing our Viper winch mount. You now own a premium custom winch mount which allows you to use your winch with your UTV / SxS. Please note the following instructions and heed all warnings:

- Please use common sense when operating your UTV / SxS
- Read your Winch Operator Manual and all other operator manuals, including warning labels, before operating your UTV / SxS
- Be observant of moving parts causing entanglement; use extreme caution!

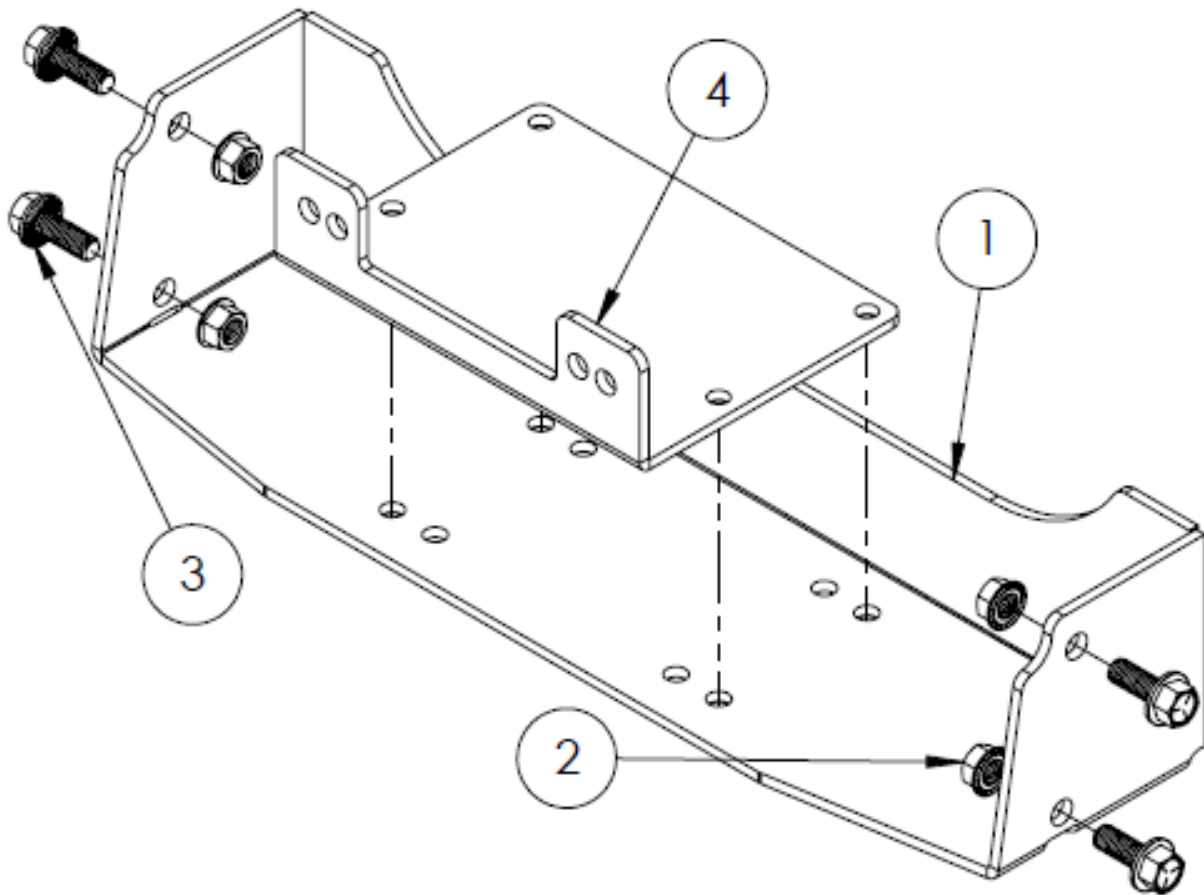
SEVERE INJURY OR DEATH MAY RESULT IF YOU ARE NEGLIGENT.

MotoAlliance
MA11990 John Deere XUV 625i/825i/855D Winch Mount

Please verify that all hardware and parts are included in your package.

Kit Contents:

| Item | Description | QTY |
|------|---|-----|
| 1 | MA11990 Mount Plate | 1 |
| 2 | 3/8"-16 Serrated Flange Nut | 4 |
| 3 | 3/8"-16 x 1" Serrated Flange Bolt | 4 |
| 4 | Universal Fairlead Mount (Included with all Viper winch kits) | 1 |



MA11990 Winch Mount Assembly View

- 1) Remove the cable from the winch if the cable is already installed. Reinstall the cable by threading it through the rubber stopper (if included in the winch kit), through the fairlead, and reattach it to the winch. Leave the cable unwound at this point. After the winch is fully installed and wired up, the winch will be rewound under a heavy load to set the cable properly.
- 2) Mount the fairlead to the Universal Fairlead Bracket (part #4) using the fairlead mounting hardware included with the fairlead.
- 3) Using the hardware included in the winch kit, install the four (4) M8x25mm hex head bolts up through the bottom of the MA11990 Mount Plate (part #1), through the bottom of the Universal Fairlead Mount (part #4), and into the feet of the winch.
- 4) Check and tighten all hardware.
- 5) Remove the bumper hardware shown in Figure 1.

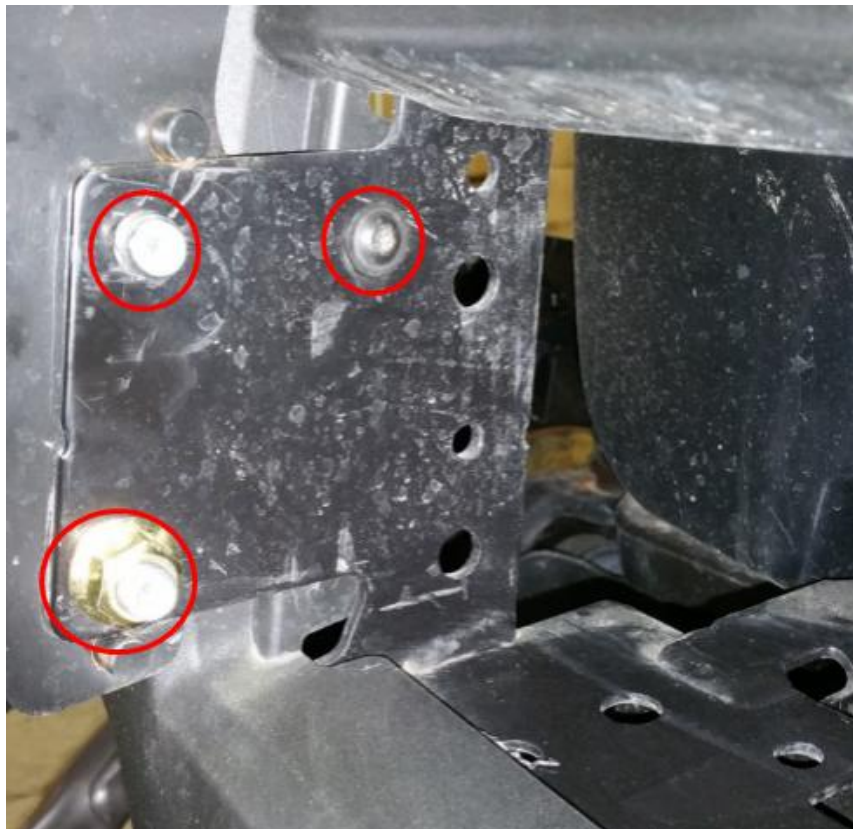


Figure 1

- 6) Slide the MA11990 Mount Plate (part #1) past the removed bumper hardware and into the open slot in the front of the machine.
- 7) Install the four (4) supplied 3/8"-16 x 1" Serrated Flange Bolts (part # 3) through the holes in the bumper frame, shown in Figure 2, and into the MA11990 Mount Plate (part #1). Secure with the supplied 3/8"-16 Serrated Flange Nuts (part #2).

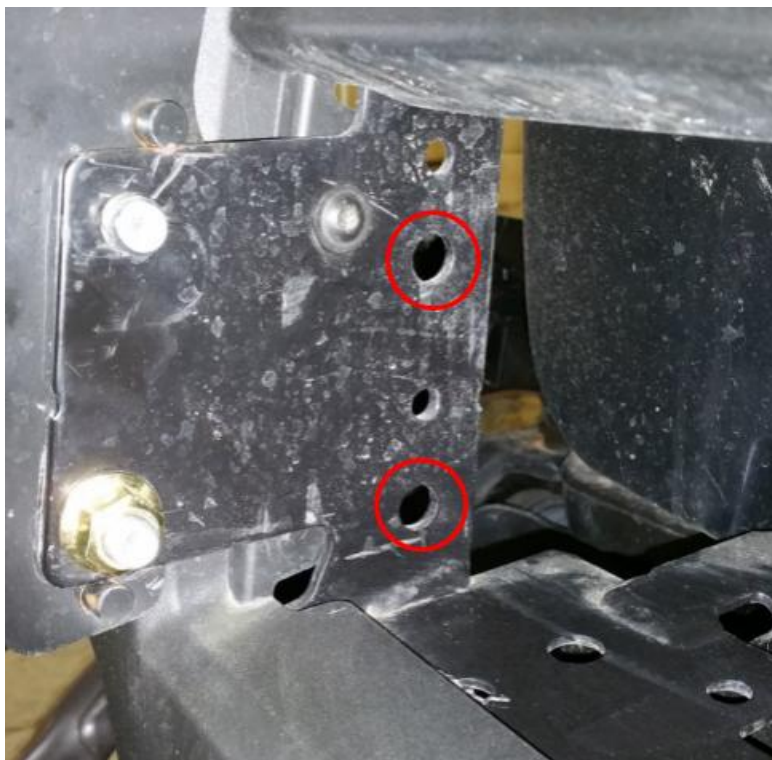


Figure 2

- 8) Check and tighten all hardware
- 9) Reinstall the bumper and hardware previously removed.
- 10) Mount the contactor under the hood of the machine and wire up according to the winch manual. It may be necessary to swap the longer blue and yellow wires with the shorter black and red wires on some winches.
- 11) Once the winch is wired up properly, tie the end of the cable off to a secure location (such as a tree, a post, or a full sized truck), set the brake on your machine and wind the winch in carefully, watching to make sure the cable doesn't become tangled. This will help set the cable and prevent future tangles.