



INSTALLATION INSTRUCTIONS

WINCH MOUNTING KIT

Part Number: 80335

Application: Polaris Ranger RZR

Your safety, and the safety of others, is very important. To help you make informed decisions about safety, we have provided installation and operating instructions and other information on labels and in this guide. This information alerts you to potential hazards that could hurt you or others. It is not possible to warn you about all potential hazards associated with this product, you must use your own good judgment.

CARELESS INSTALLATION AND OPERATION CAN RESULT IN SERIOUS INJURY OR EQUIPMENT DAMAGE. READ AND UNDERSTAND ALL SAFETY PRECAUTIONS AND OPERATING INSTRUCTIONS BEFORE INSTALLING AND OPERATING THIS PRODUCT.

This guide identifies potential hazards and has important safety messages that help you and others avoid personal injury or death. **WARNING** and **CAUTION** are signal words that identify the level of hazard. These signal words mean:

▲WARNING signals a hazard that *could* cause serious injury or death, if you do not follow recommendations. **▲CAUTION** signals a hazard that *may* cause minor to moderate injury, if you do not follow recommendations.

This guide uses **NOTICE** to call attention to important mechanical information, and **Note** to emphasize general information worthy of special attention.

▲ WARNING

INJURY HAZARD

Failure to observe these instructions could lead to severe injury or death.

- ❑ **Always** use extreme caution when drilling on any vehicle. Make sure that all fuel lines, brake lines, electrical wires, and other objects are not punctured or damaged when / if drilling on the vehicle. Thoroughly inspect the area to be drilled (on both sides of material) prior to drilling, and relocate any objects that may be damaged. Failure to inspect the area to be drilled may result in vehicle damage, electrical shock, fire or personal injury.
- ❑ **Always** wear safety glasses when installing this kit. A drilling operation will cause flying metal chips. Flying chips can cause eye injury.
- ❑ **Always** use extreme caution when cutting and trimming during fitting.
- ❑ **Always** remove jewelry and wear eye protection.
- ❑ **Never** lean over battery while making connections.
- ❑ **Never route electrical cables:**
 - Across any sharp edges.
 - Through or near moving parts.
 - Near parts that become hot.
- ❑ **Always** insulate and protect all exposed wiring and electrical terminals.
- ❑ **Always** install terminal boots as directed in installation instructions.
- ❑ **Always** use appropriate and adequate care in lifting components into place.
- ❑ **Always** insure components will remain secure during installation and operation.
- ❑ **Always** tighten all nuts and bolts securely, per the installation and operation.
- ❑ **Always** perform regular inspections and maintenance on the winch, winch mount and related hardware.
- ❑ **Never** operate this **WARN** product with damaged or missing parts.

⚠ Caution
Moving Parts Entanglement Hazard
Failure to observe these instructions could lead to minor or moderate injury.
<input type="checkbox"/> Always take time to fully read and understand the installation and Operations Guide included with this product. <input type="checkbox"/> Never operate this product if you are under 16 years of age. <input type="checkbox"/> Never operate this product when under the influence of drugs, alcohol or medications.
Read installation and operating instructions thoroughly.

Notice
Equipment Damage
<input type="checkbox"/> Always refer to the Installation and Specification Guide, supplied in the winch kit, for all wiring schematics and specific details on how to wire this WARN product to your vehicle.
Read installation and operating instructions thoroughly.

I. BEFORE YOU BEGIN

Before you begin disconnect the positive battery lead from the battery.

II. TABLE OF CONTENTS

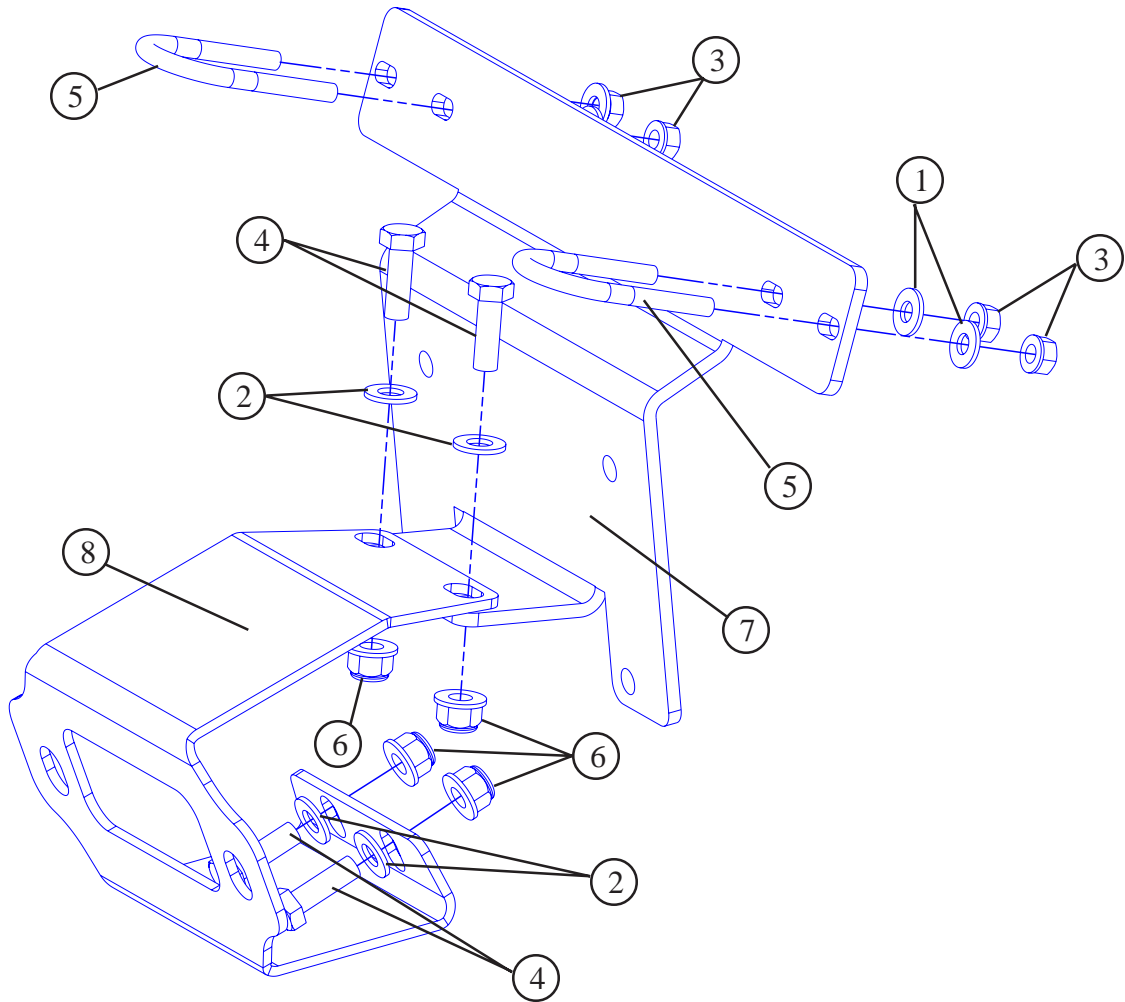
Torque Specifications	page 2
Tools Required	page 2
Parts List	page 3
Installation	page 4-6
Maintenance/Care	page 7

III. TORQUE SPECIFICATIONS

1/4, 6MM	8 lb. ft. (10.8 N-m)
5/16, 8MM	17 lb. ft. (12.5 N-m)
3/8, 10MM	30 lb. ft. (40.7 N-m)
7/16, 11MM	50 lb. ft. (67.8 N-m)
1/2, 12MM	75 lb. ft. (101.7 N-m)

IV. TOOLS REQUIRED

- 7/16, 12mm, Socket
- 7/16, 12mm End Wrench
- Flat Blade screw driver
- Torx head drivers



V. PARTS LIST

<i>No.</i>	<i>Part Number</i>	<i>Qty</i>	<i>Description</i>
1	1320	4	1/4 Flat Washer
2	1324	4	5/16 Flat Washer
3	22105	4	1/4-20 Locking Hex Nut
4	22508	4	M8 x 1.25 x 25 MM Hex Bolt
5	31209	2	U-Bolt 1/4-20 x 1 1/4 x 1 1/4
6	71588	4	M8 x 1.25 Hex Flanged Lock Nut
7	77008	1	Winch Mounting Bracket
8	77010	1	Fairlead Mounting Bracket

VI. INSTALLATION

1. Remove front bumper assembly, make sure to disconnect the head lamps before removing the bumper. The bumper is attached with 6 torx head screws and 4 plastic push tabs attaching the bumper to the front fenders.



Figure 1

2. After removing the front bumper place the mounting plate into position see figure 2. At this time also place the winch into position along with the mounting plate.



Figure 2

3. Before attaching the mounting plate to the frame the winch will have to be attached to the mounting plate. Once the winch has been attached to the mounting plate tighten down all four bolts to the recommended torque of 17 lb. ft.

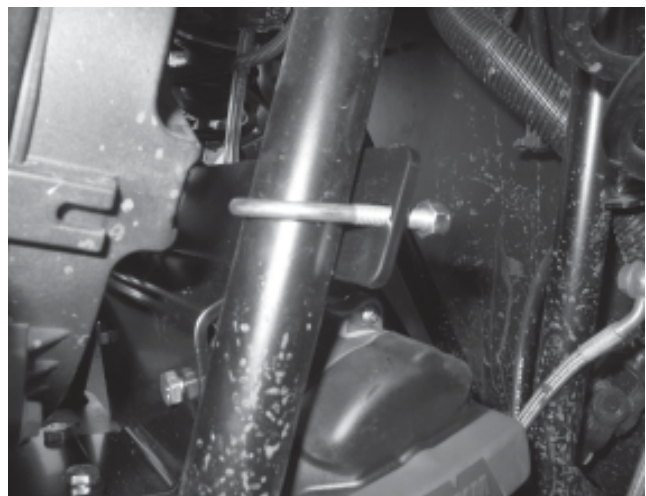


Figure 3

4. Attach the mounting plate with the winch to the frame using 2 1/4-20 U-bolts, washers and locking hex nuts. Just finger tighten the hex nuts at this time. This will help hold the mounting plate into position while attaching the fairlead bracket and the rest of the hardware, see figure 3.

INSTALLATION CONT.

5. Place the fairlead bracket into position as shown in figure 4. the fairlead bracket will fit over top of the flange on the winch mounting bracket. Insert 2 of the 8mm hex bolts and flat washers through both brackets and into the frame on the atv. Finger tighten the 8mm hex flange nuts at this time. It is best to leave every thing as loose as possible at this point in the installation.

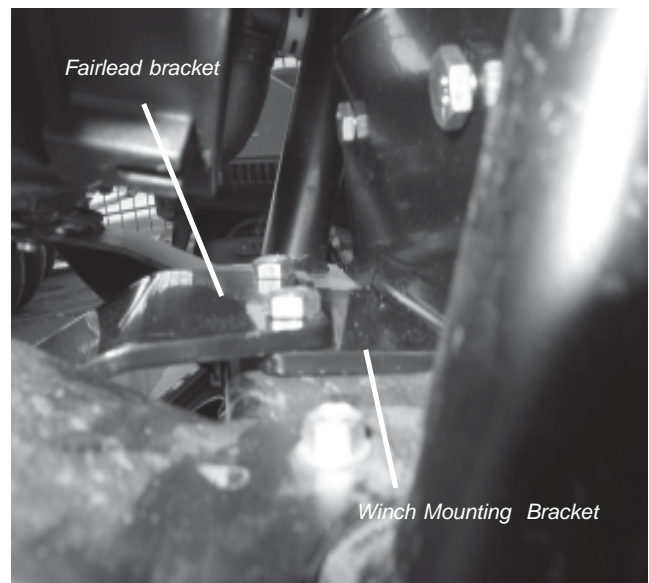


Figure 4

6. Attach the lower flange of the fairlead bracket, see figure 5. Use 8mm hex bolts, flat washers and hex flange nuts.

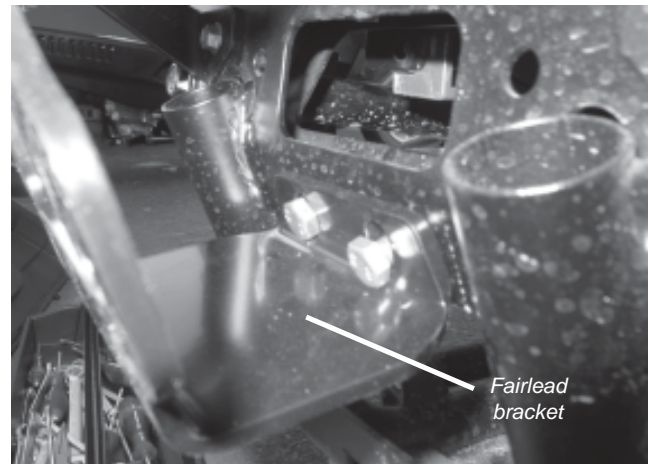


Figure 5

7. Tighten all of the fasteners at this point in the installation use the recomended torque specs, see figure 6 shows the brackets in the correct location before the front bumper is placed back into position.

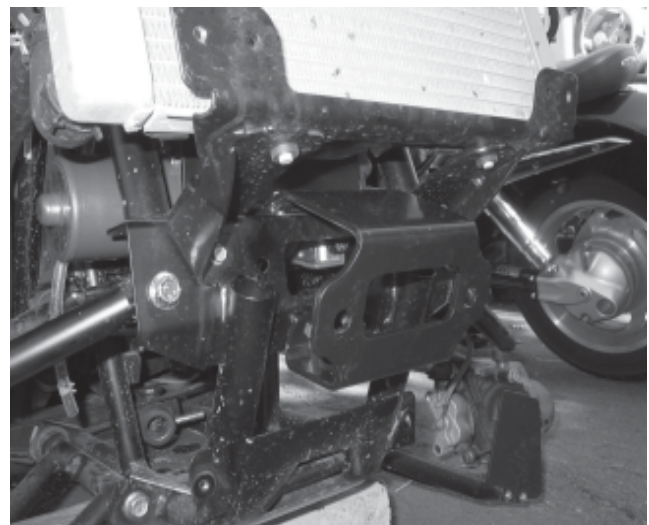


Figure 6

INSTALLATION CONT.

8. Remove the cover that is located on the front bumper, the cover is attached with 4 torx head screws. Place the bumper back into position and check for fit. Because of the variation in each vehicle make sure that the roller fairlead will fit into the opening of the front bumper.
9. If the the roller fairlead contacts the front bumper, spacing the fairlead out with a washer between the fairlead and the bracket or cutting away part of the plastic bumper should alleviate the fit issue, see figure 7 and 8
10. Attach the roller fairlead to the fairlead bracket, use the hardware that came with the winch.
11. Replace the bumper and tighten down all fasteners.

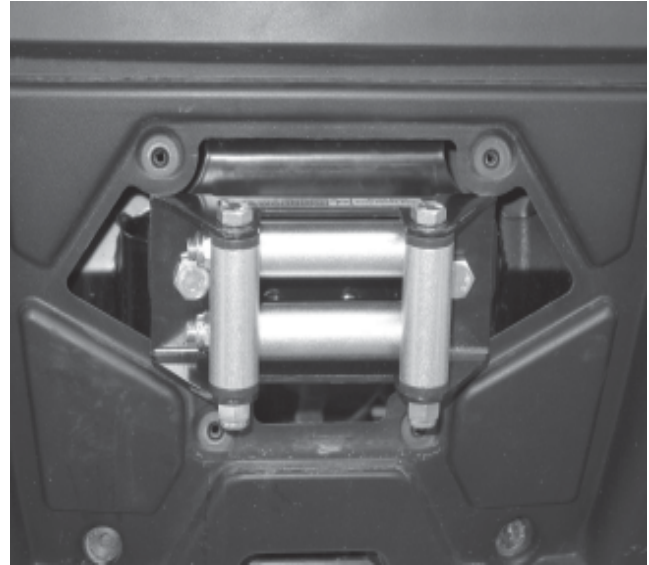


Figure 7

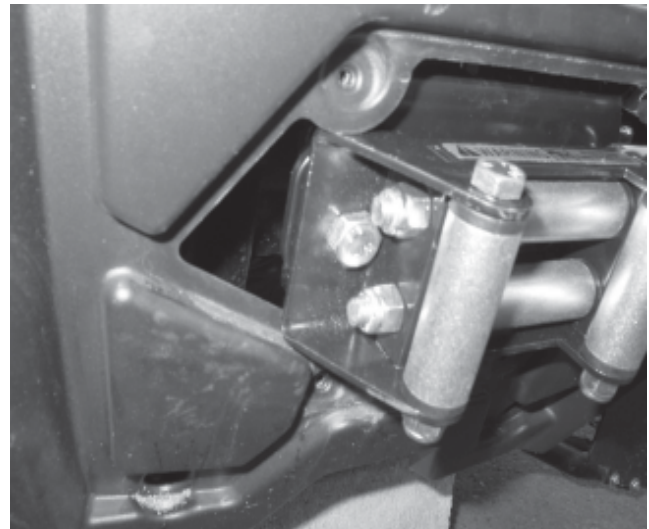


Figure 8

⚠ WARNING

READ THE VEHICLE'S OPERATOR MANUAL, WINCH OPERATOR MANUAL, AND ALL WARNING LABELS PRIOR TO OPERATION OF ATV AND WINCH.

THE WINCH MOUNTING PLATE INSTALLATION IS NOW COMPLETE.

- **Wire winch according to instructions found in winch kit.**

PROCEED TO SECTION TITLED "MAINTENANCE/CARE".

⚠ WARNING

FAILURE TO SECURELY TIGHTEN ALL BOLTS ON THE WINCH PLATE, WINCH, AND FAIRLEAD CAN RESULT IN PRODUCT FAILURE WHICH MAY RESULT IN VEHICLE DAMAGE AND OPERATOR INJURY OR DEATH. DOUBLE CHECK THAT ALL BOLTS ARE SECURELY TIGHTENED PRIOR TO USE.

VII. MAINTENANCE/CARE

1. Inspect all parts on the winch, winch mount, and related hardware prior to each use. Replace all hardware that appears rusted or deformed.
2. Inspect all nuts and bolts on the winch, winch mount, and related hardware prior to each use. Tighten all nuts that appear to be loose. Stripped, fractured, or bent bolts or nuts need to be replaced.
3. Check all cables prior to use. Replace cables that look worn or frayed.
4. Check all moving or rotating parts. Remove debris that may inhibit the part from moving freely.

⚠ WARNING

PERFORM REGULAR INSPECTIONS ON THE WINCH, WINCH MOUNT, AND RELATED HARDWARE. NEVER OPERATE THE WINCH WITH DAMAGED OR MISSING PARTS. FAILURE TO FOLLOW THIS WARNING MAY CAUSE VEHICLE DAMAGE AND OPERATOR INJURY OR DEATH.