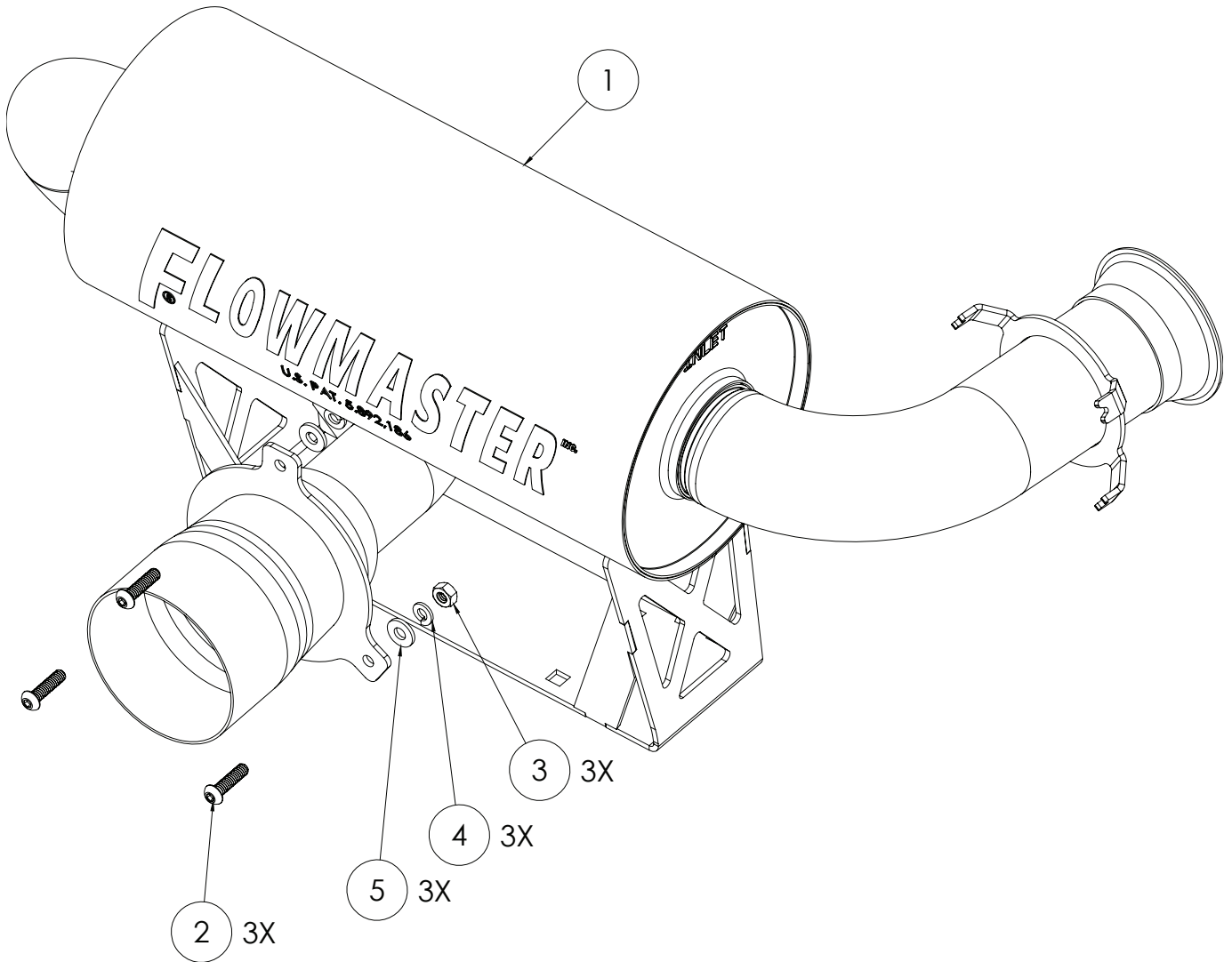




Installation Instructions for  
**7204**  
**SINGLE OUT EXHAUST**  
**2017-2019 CAN AM MAVERICK X3**



ITEM	PART NO.	DESCRIPTION	QTY.
1	12514310-489	Outlaw Muffler	1
N/A	PK971	Hardware Pack includes:	1
2	HW257	¼"-20 x 1" Screw	3
3	HW124	¼"-20 Hex Nut	3
4	HW332	¼" Split Lock Washer	3
5	HW333	¼" Flat Washer	3

## OVERVIEW:

### REQUIRED MATERIALS

- Penetrating oil (WD-40 or similar)
- Anti-seize compound (Permatex Nickel or similar)



1. Please take a moment to read and understand these instructions before installing your purchased performance kit.

NOTE: Please inventory all parts before starting the installation process and call our tech line to report any missing parts. This will help avoid potentially stranding your vehicle until any missing replacement parts arrive.

### REMOVE FACTORY EXHAUST SYSTEM:

#### WARNING:

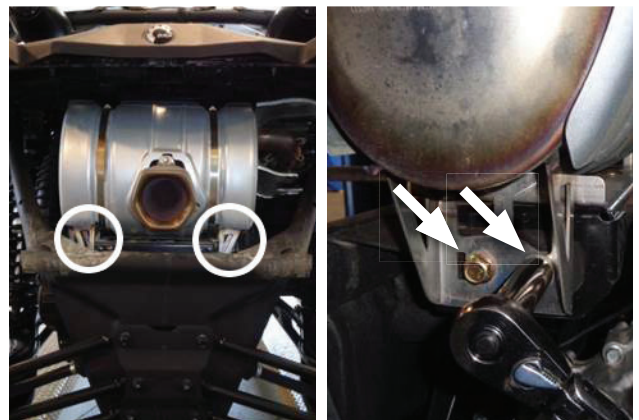
Avoid serious burns! Allow vehicle time to cool completely before handling any of the stock engine components.



2. Remove screws (x5) and rear fascia. Retain them for later use.



3. Release springs (x4) around flange of factory exhaust.



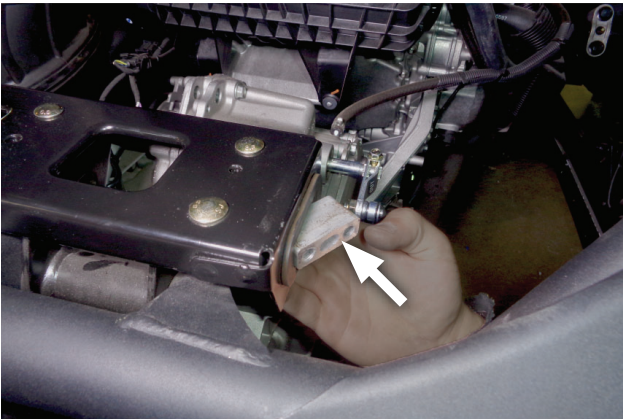
4. Remove mount bolts (x4) and muffler brackets (x2) from factory exhaust.



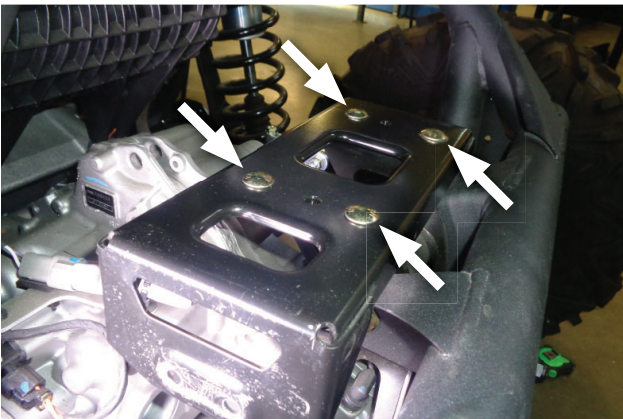
5. Remove muffler from vehicle.



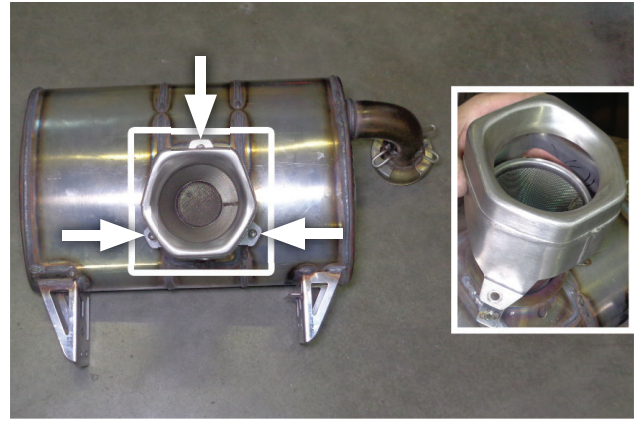
6. Inspect lead gasket on end of exhaust pipe for serviceability. Reinstall or replace gasket as required.



7. Remove rubber stopper from muffer support.



8. Remove carriage bolts (x4), flanged hex nuts (x4) and muffer support from vehicle. Retain bolts and nuts for later use.



9. Remove screws (x3) and heat shield from factory muffer. Retain heat shield for later use.

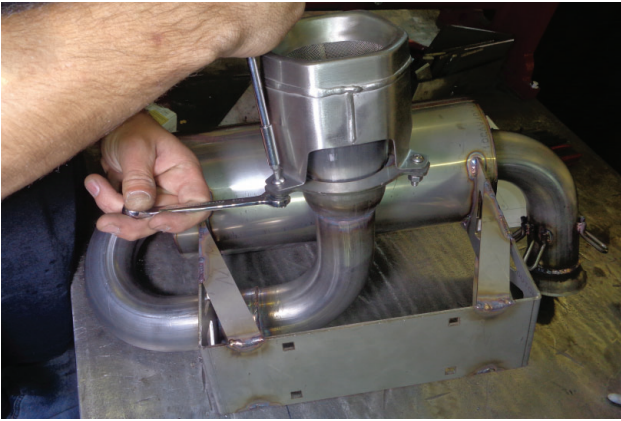


10. Remove spark arrestor from muffer then inspect it. Retain for next step.

### Install your XDR performance exhaust kit:



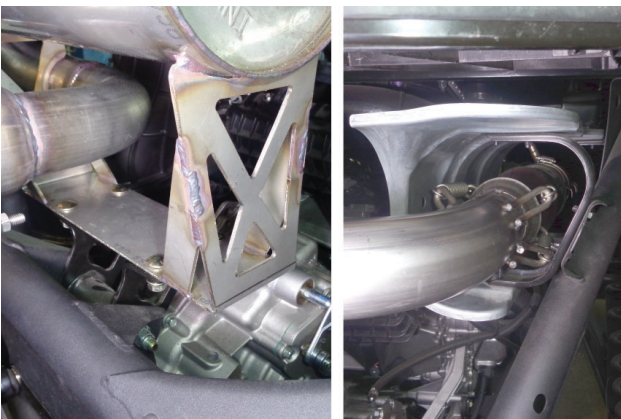
11. Install spark arrestor from last step onto **muffer (1)** as shown.



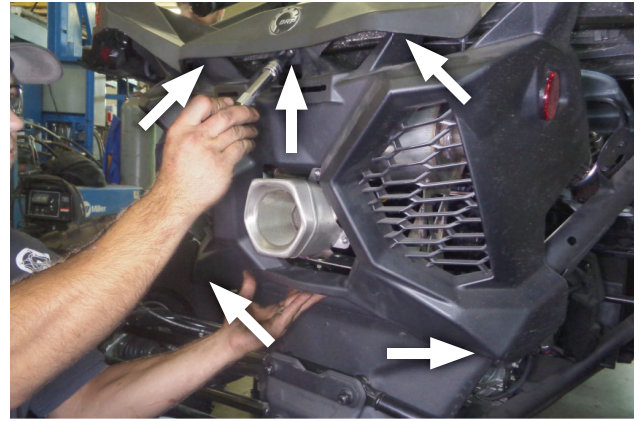
12. Install heat shield (removed step 9) with (x3 ea.) screws (2), flat washers (5), split lock washers (4) and hex nuts (3).



13. Place muffler into place on vehicle.



14. Secure muffler base using bolts and nuts (removed step 8) and inlet using springs (x4) (released step 3).



15. Install screws (x5) and rear fascia (removed step 2).



Congratulations, the installation of your performance XDR Exhaust System is now complete!

