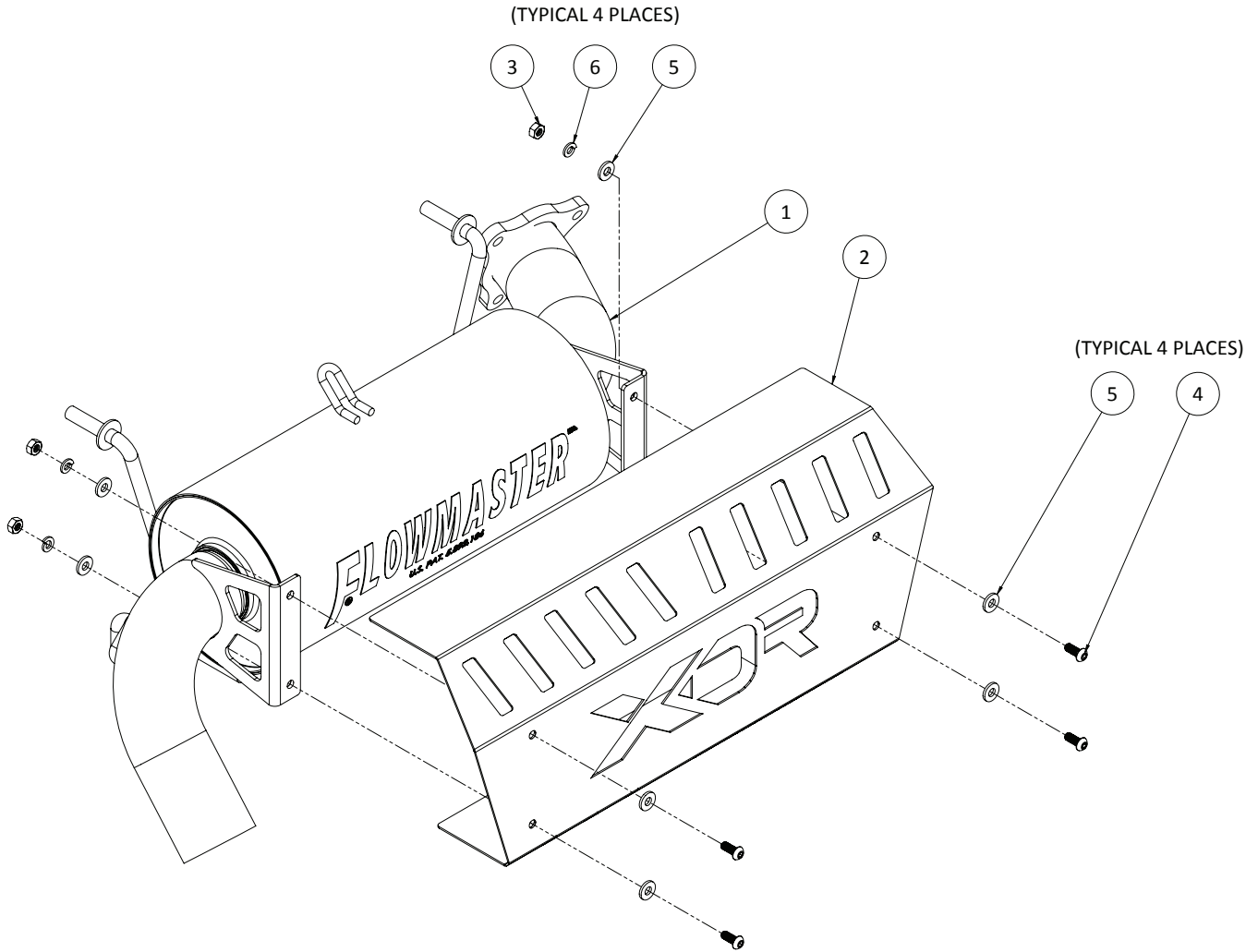




Installation Instructions for
7522
SINGLE OUT EXHAUST
FITS: 2016-2019 POLARIS RZR
XP/XP4 TURBO



ITEM	PART NO.	DESCRIPTION	QTY.
1	12514310-525	XDR Muffler	1
2	HS126	Heatshield	1
N/A	PK973	Hardware Pack includes:	1
3	HW124	¼"-20 Hex Nut	4
4	HW245	¼"-20 x ⅝" BTNHD Screw	4
5	HW320	¼" Flat Washer	8
6	HW322	¼" Split Lock Washer	4

OVERVIEW:

REQUIRED MATERIALS

- Penetrating oil (WD-40 or similar)
- Anti-seize compound (Permatex Nickel or similar)



1. Please take a moment to read and understand these instructions before installing your purchased performance kit. Use the parts drawing and list to verify kit contents.

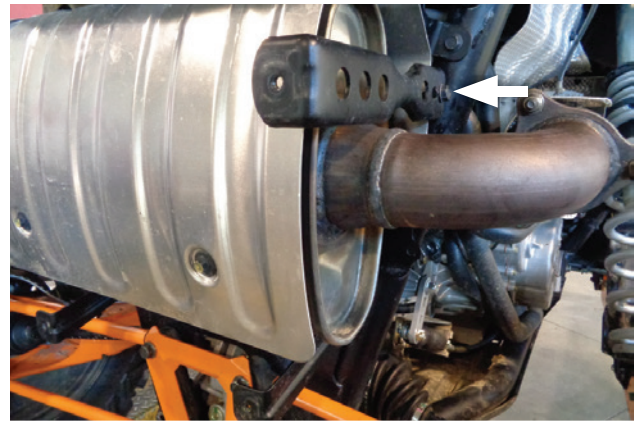
REMOVE FACTORY EXHAUST SYSTEM:

WARNING:

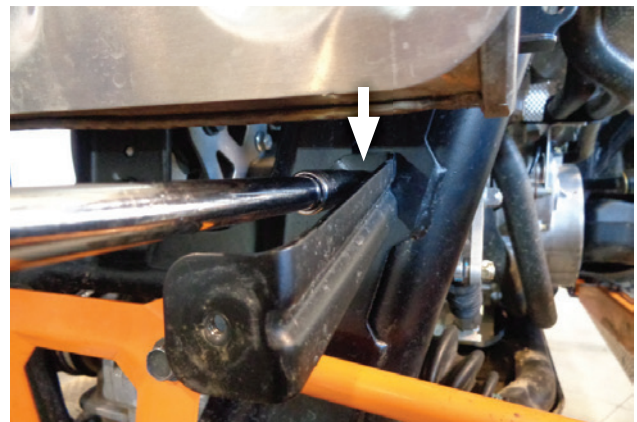
Avoid serious burns! Allow vehicle time to cool completely before handling any of the stock engine components.



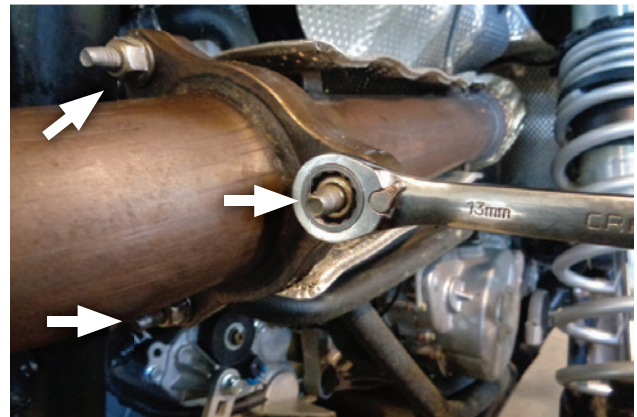
2. Remove heat shield bolts (x4) and heat shield.



3. Remove upper heat shield brackets (x2) on each side of muffler.



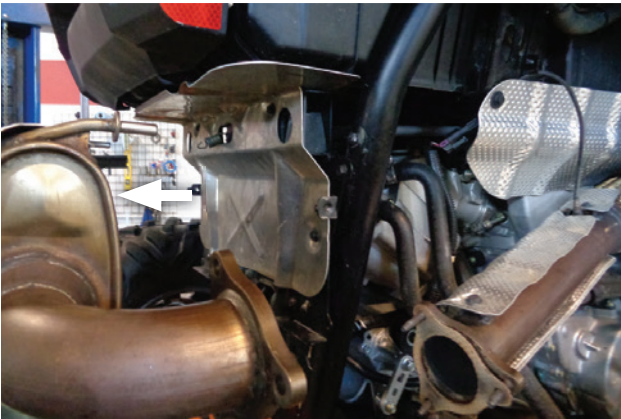
4. Remove lower heat shield brackets (x2) below each end of muffler.



5. Apply penetrating oil or anti-seize compound to exposed stud threads of nuts (x3) on exhaust flange, then remove them.



6. Use spring puller to release muffler mount springs (x2).



7. Remove muffler from vehicle.

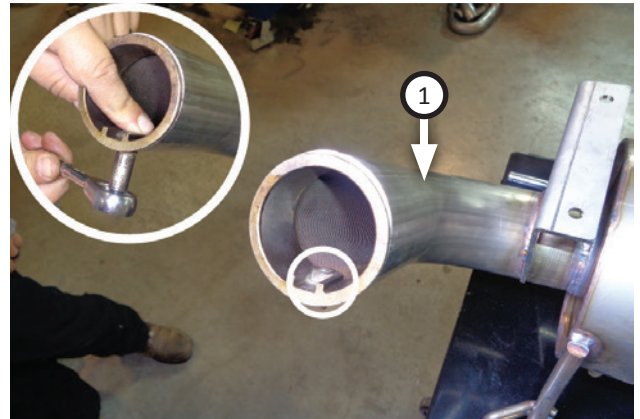


8. Inspect exhaust flange gasket for damage (cracking, etc.). Replace if required.

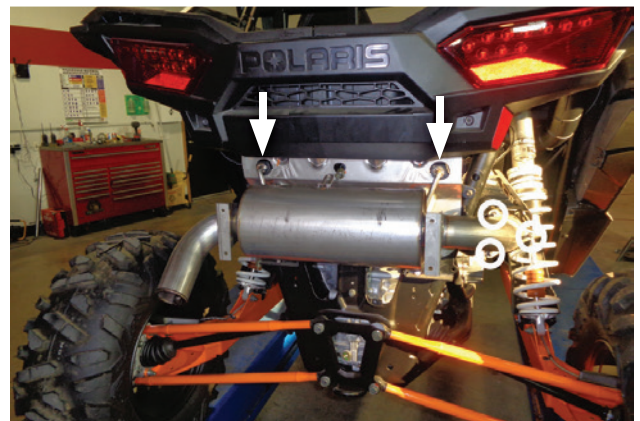


9. Remove bolt, washer and spark arrester from factory muffler outlet. Retain for later re-use.

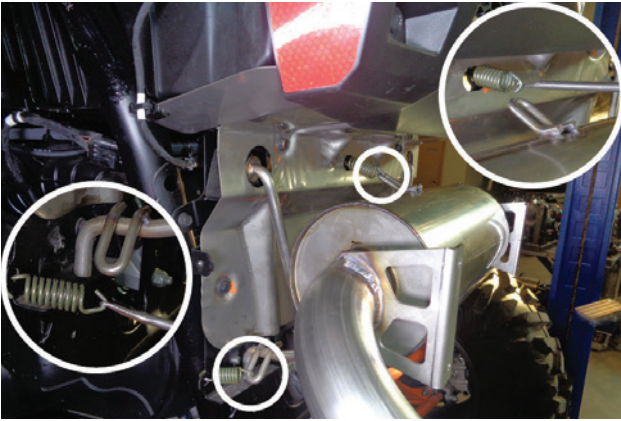
Install your Flowmaster performance exhaust kit:



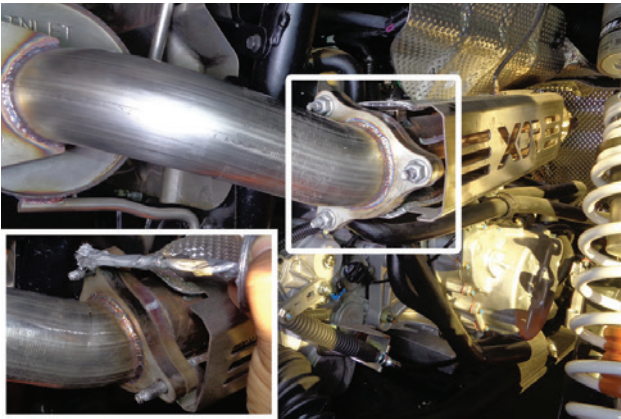
10. Install bolt, washer and spark arrester (removed step 9) into **XDR muffler (1)**.



11. Install XDR muffler by pushing hanger pins (x2) into rubber mounts and matching flange holes to studs (x3) at inlet connection.



12. Use spring puller to connect muffler mount springs (x2) to XDR muffler.



13. Apply anti-seize compound to flange studs then install factory nuts (x3) (removed step 5) and tighten them evenly.



14. Install heatshield (2) over muffler using screws (4), flat washers (5), split lock washers (6) and hex nuts (3). Tighten fastener assemblies completely.



Congratulations, the installation of your performance XDR Exhaust System is now complete!

