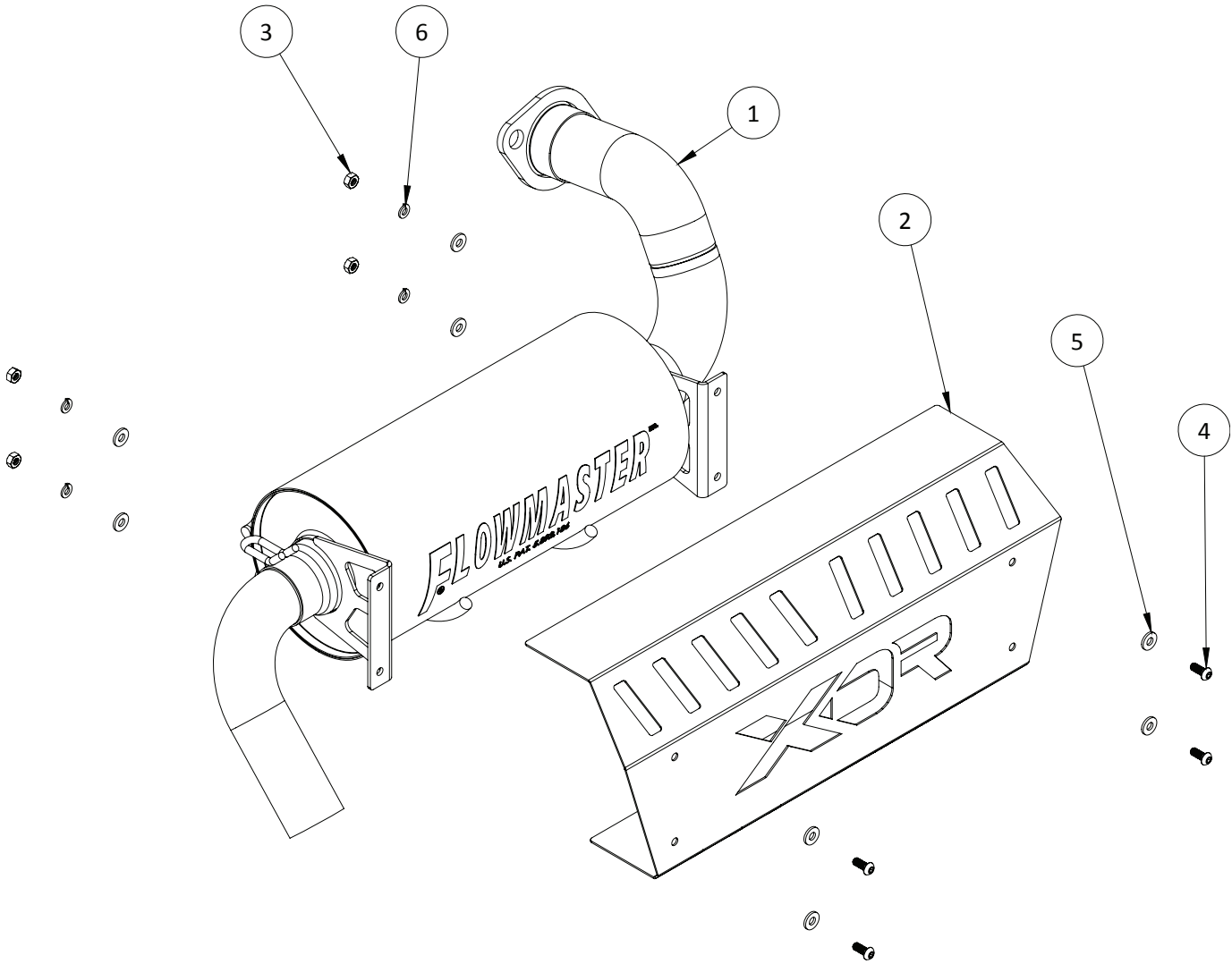
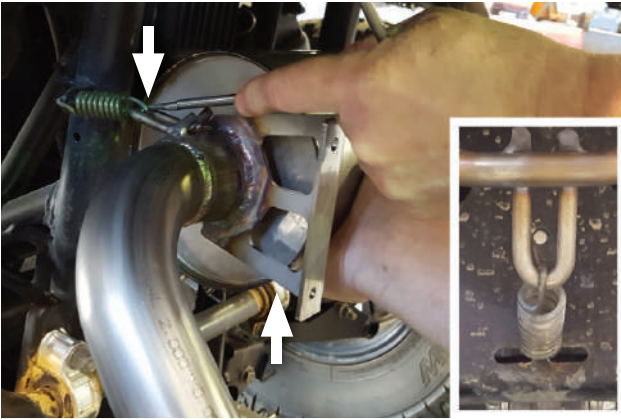




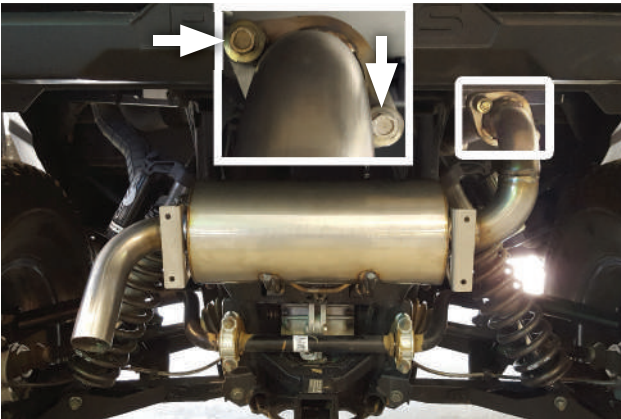
Installation Instructions for
7526
SINGLE OUT XDR EXHAUST
**2016-2018 POLARIS GENERAL/
 RZR S 1000**



ITEM	PART NO.	DESCRIPTION	QTY.
1	12414310-528	Muffer	1
2	HS126	Heatshield	1
N/A	PK973	Hardware Pack includes:	1
3	HW124	¼"-20 Hex Nut	4
4	HW269	¼"-20 x ⅝" BTNHD Screw	4
5	HW333	¼" Flat Washer SAE	8
6	HW332	¼" Split Lock Washer	4



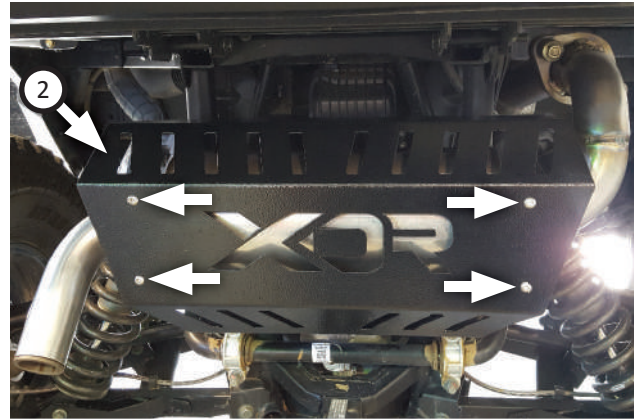
6. Secure side and bottom of muffler to mount using springs (x2) (dismounted step 2).



7. Tighten bolts (x2) completely to fasten muffler fully onto vehicle.



8. Install nut, bolt and spark arrestor (removed step 4) onto muffler outlet.



9. Install **heatshield (2)** to muffler using (4 ea.) **screws (4)** through **flat washers (5)**, mounting surfaces, **flat washers (5)**, **split lock washers (6)** and **hex nuts (3)** as demonstrated in cover drawing.



Congratulations, the installation of your performance XDR Exhaust System is now complete!

NOTE: XDR Offroad Group maintains a highly trained technical service department to answer your technical questions, provide additional product information and offer various recommendations.

