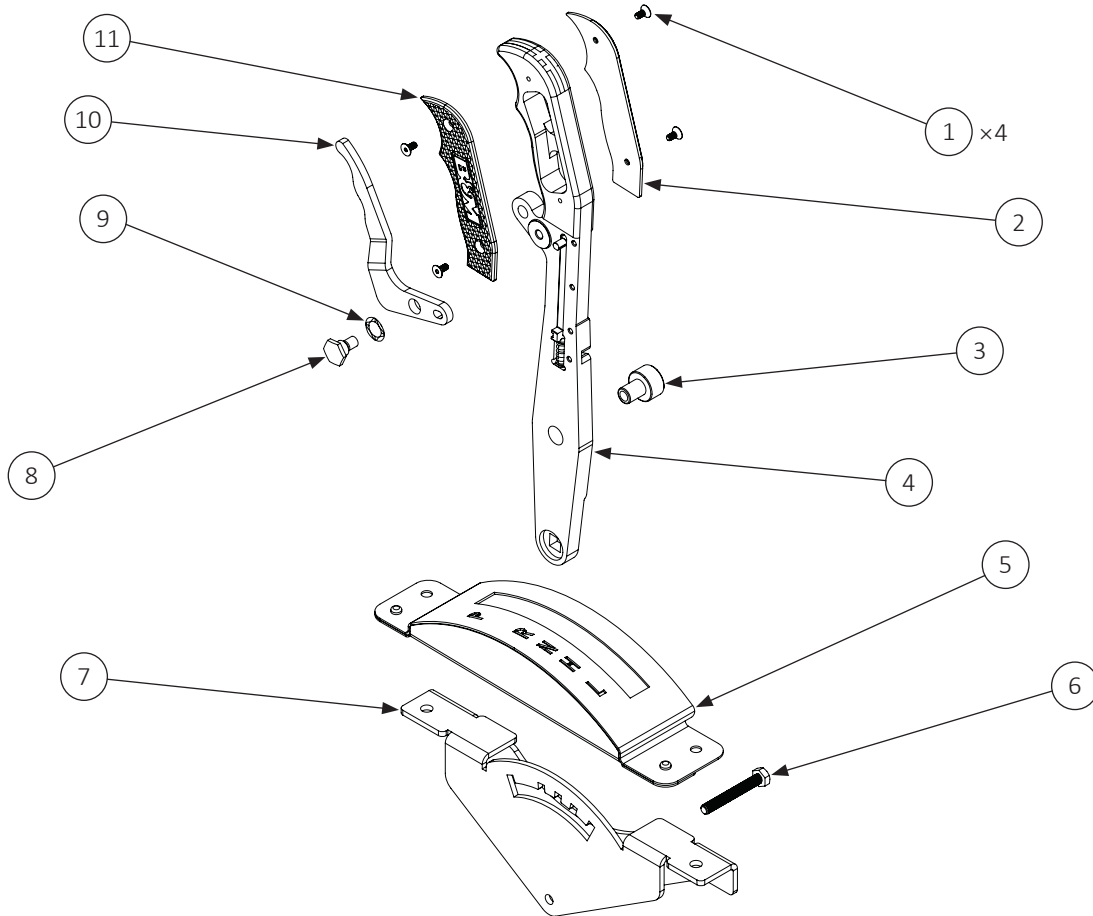




Installation Instructions for **81170**
MAGNUM GRIP GATED SHIFTER for
2014–2018 CAN-AM MAVERICK 1000R:
ALL MAX, and ALL 2-SEAT TURBO
(Excludes X3 and Trail models)



ITEM NO.	PART NO.	DESCRIPTION	QTY.
1	3401537	SCREW, 6-32 x 5/16" FLAT SOCKET HEAD	4
2	4001495	RIGHT GRIP PLATE, MAGNUM GRIP, DIAMOND KNURL, BLACK	1
3	4001786	PIVOT SLEEVE, CAN-AM MAVERICK	1
4	N/A; SHIPS ASSD	SHIFT LEVER ASSEMBLY, 14–18 CAN-AM MAVERICK	1
N/A	• 4001748	• STICK, MAGNUM GRIP GATED SHIFTER, CAN-AM MAVERICK	1
	• 4001286	• SELECTOR PIN	1
	• 4001497	• SELECTOR SPRING	1
	• 3401559	• DOWEL PIN, M5 x 18MM	1
5	4001785	DUST COVER, CAN-AM MAVERICK	1
6	3401627	PIVOT SCREW, M6-1.0 x 45MM	1
7	4001784	GATE PLATE, CAN-AM MAVERICK	1
8	4001393	BOLT, SHOULDER CHROME	1
9	3400533	SPRING WASHER, CURVED	1
10	4001482	TRIGGER LEVER, BLACK ANODIZED, MAGNUM GRIP SHIFTERS	1
11	4001492	LEFT GRIP PLATE, MAGNUM GRIP, DIAMOND KNURL, BLACK	1

REVIEW THESE INSTRUCTIONS AND VERIFY THE KIT CONTENTS

1. Take a moment to read and understand these instructions for your XDR Magnum Grip Gated Shifter.



2. Use the parts drawing and list (front page) to verify your kit's contents.

REMOVE THE STOCK SHIFTER

WARNING

Turn off the ignition, and securely chock the vehicle's wheels to keep it from rolling when the shifter is manipulated.

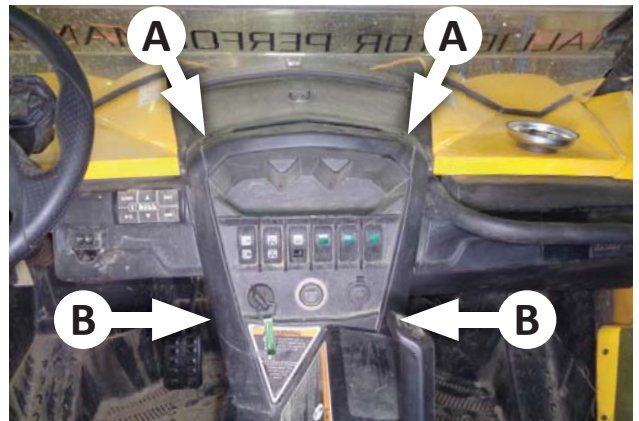
NOTE: Retain all factory parts.



3. Loosen the jam nut under the shift knob, then remove the knob from the lever.



4. Remove the driver's seat from the vehicle. **ON 2-SEAT MODELS**, remove the passenger seat also.



5. On the control panel, remove the 2 screws (A) and the 2 push rivets (B).



6. Open the glove box.



7. Remove the control panel and carefully place it on top of the dash board.



10. Remove the 4 (of 5 total) rear console push rivets shown.



8. Remove the screw(s) from the passenger grab handle(s). Remove the handle(s) by pulling straight up while twisting it back and forth.



11. Remove the 5th rear console push rivet, next to the right rear seatbelt buckle.

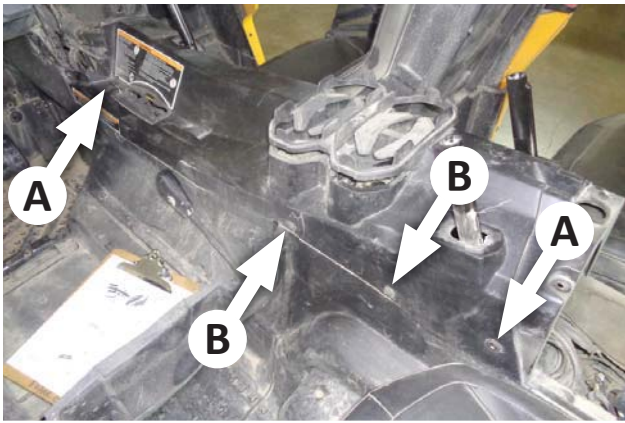
4-SEAT MODELS



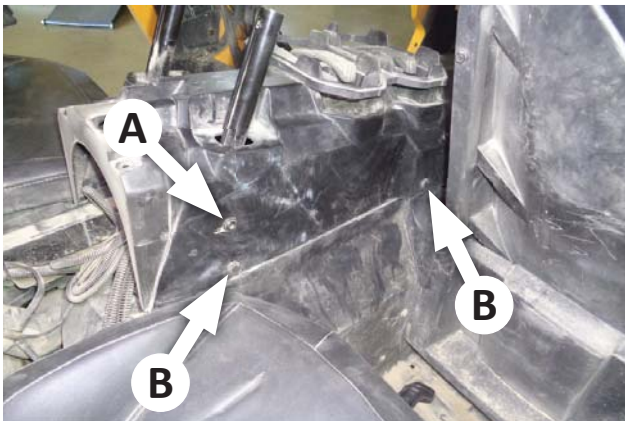
9. Open the rear console lid.



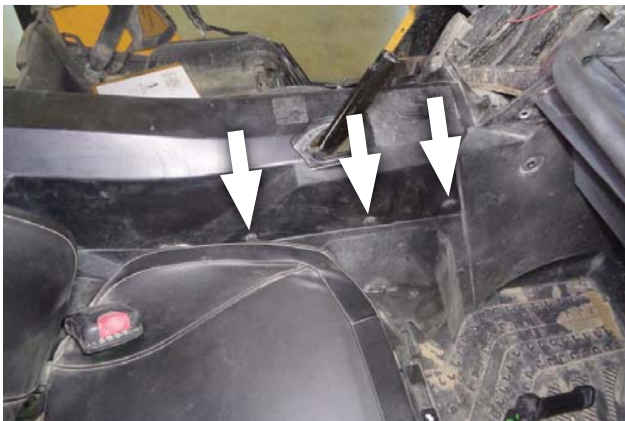
12. Remove the rear console from the vehicle.



13. Remove the 2 screws (A) and 2 push rivets (B) from the left side of the front console.

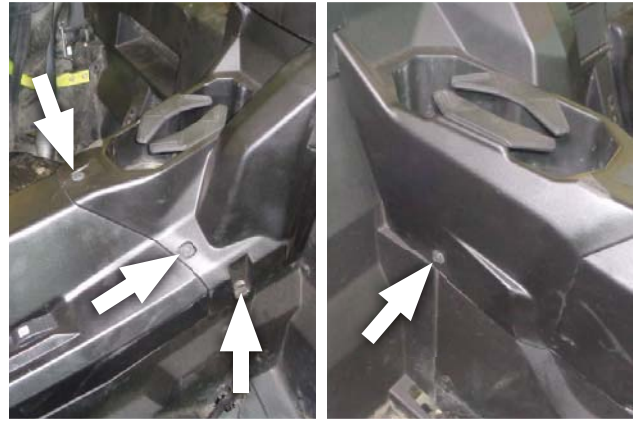


14. Remove the screw (A) and 2 push rivets (B) from the rear right side of the front console.



15. Remove the 3 push rivets from the front right side of the front console. **THEN GO TO STEP 20.**

2-SEAT MODELS



16. Remove the 4 rear console push rivets (3 on the left, 1 on the right).



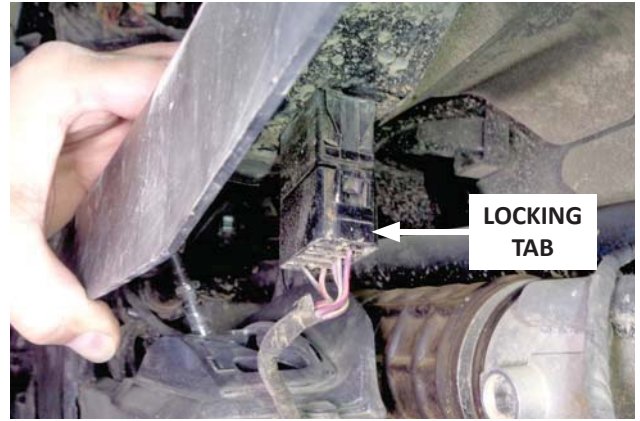
17. Remove the rear console from the vehicle.



18. Remove the screw from the left side of the front console.

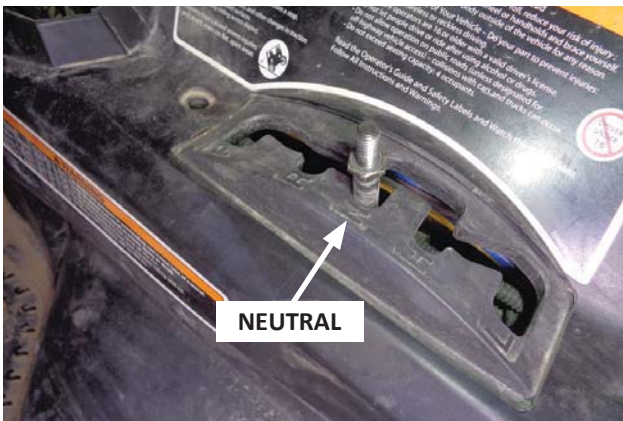


19. Remove the 3 push rivets from the front right side of the front console.



22. Remove the Override switch connector from the switch by squeezing locking tab at the bottom rear of the connector.

ALL MODELS



20. Shift the transmission into Neutral.

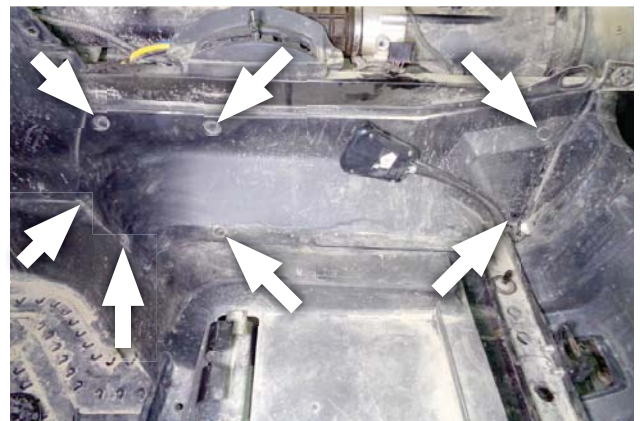


23. Carefully remove the front console cover from the vehicle.



21. Lift the front console just enough to see and reach under it in the next step.

4-SEAT MODELS



24. Remove the 7 plastic push rivets from the driver side cover panel. **THEN GO TO STEP 26.**

2-SEAT MODELS



25. Remove the 8 plastic push rivets from the driver side cover panel.

ALL MODELS



26. Remove the driver side cover panel from the vehicle.



27. Disconnect the shift cable from the shift lever by removing the nut and washer.
NOTE: The nut will be re-used; the washer will not be.



28. Remove the screw and shift gate.



29. Remove the shift lever mount screw, nut, and 2 washers, then remove the lever from the vehicle.
NOTE: The the nut and 1 washer will be re-used; the screw will not be.



30. Remove the metal sleeve and the 2 plastic bushings from the shift lever.
NOTE: The 2 bushings will be re-used; the metal sleeve will not be.

ASSEMBLE AND INSTALL YOUR XDR GATED SHIFTER



31. Temporarily remove the 4 grip plate screws (item 1) and the grip plates (2 and 11) from the XDR shift lever assembly (4), and set them in a safe location.



32. Insert the 2 plastic bushings from Step 30 in the shift lever.



33. Insert the pivot sleeve (3) in the plastic bushings from the passenger side of the shift lever.



34. With the shift lever and gate plate (7) oriented as shown (driver side up), insert the lever in the gate.



35. Turn the gate and shift lever over (passenger side up), and insert the pivot screw (6) through the assembled pieces.



36. Turn the gate and shift lever back over (driver side up), and install one of the washers removed at Step 29 over the screw.



37. Carefully grasp the assembled parts and hardware, move the shift lever into the PARK position (fully forward), and move the assembly to the vehicle.



38. Insert the pivot screw in the shifter mount hole in the frame.

NOTE: The washer must sit between the frame and the gate plate.



39. Hand-start (but do not yet tighten) the nut from Step 29 on the pivot screw.

2-SEAT MODELS



40. Carefully push down on the wire loom for working clearance between it and the shift lever.



41. Temporarily hand-start the 2 shift gate screws into their nut-plates (about 4-5 threads).



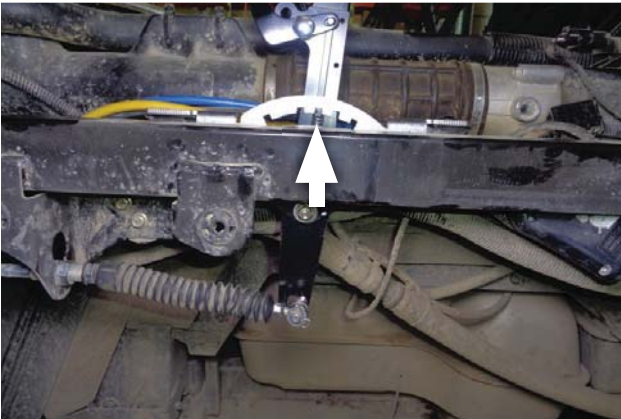
42. Tighten the pivot screw and nut.



43. Temporarily tighten both shift gate screws.



46. Insert the cable end screw in the hole in the shift lever. Make sure that the screw's square profile seats properly in the hole. Then install and tighten the nut from Step 27.



44. Move the shift lever to the NEUTRAL (center) notch in the gate plate.

NOTE: Keep the lever in NEUTRAL until the shift cable has been adjusted and connected, and the jam nuts have been tightened.



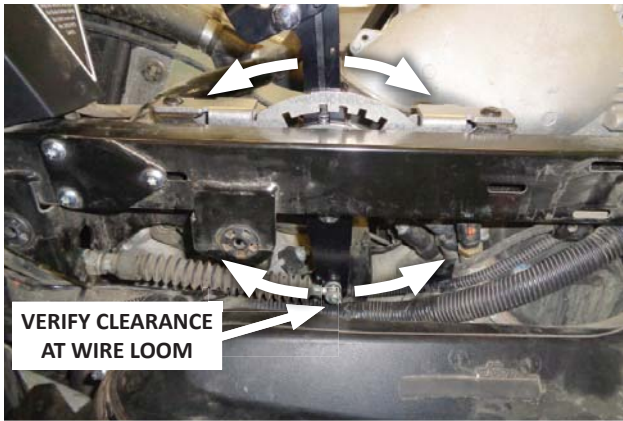
47. Turn both cable adjustment jam nuts back by hand until they are equally snug against the bracket.



45. Loosen the cable adjustment jam nuts, then back them away from the bracket just enough to allow the cable end screw to reach the hole in the shift lever naturally, without forcing it.

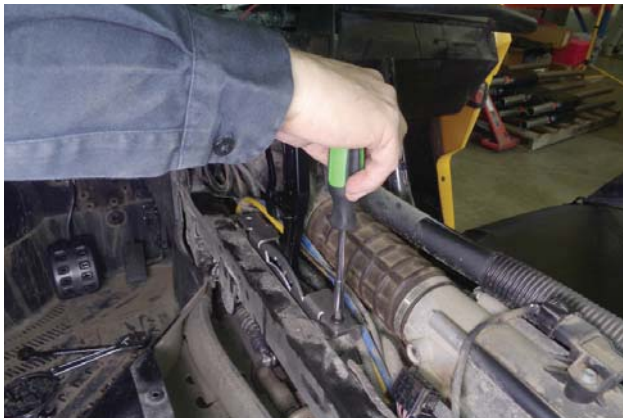


48. Tighten both jam nuts equally against the bracket.



49. Move the shifter through all 5 positions and verify that they correspond to the gearbox's detents. If not, adjust cable length as required at the adjustment jam nuts.

CAUTION: ON 2-SEAT MODELS, verify that there is NO CONTACT between the bottom of the shift lever and the wire loom.



50. Remove both shift gate screws.



51. Temporarily remove the shoulder bolt (8), spring washer (9), and trigger lever (10).

NOTE: Use caution not to lose the spring washer, which is located between the bolt head and the lever.

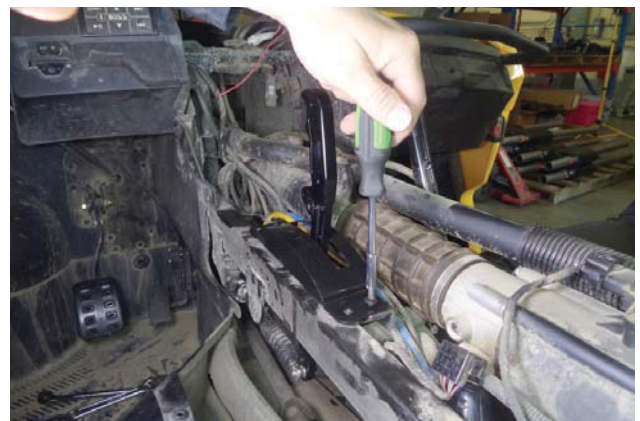


52. Slip the dust cover (5) over the shift handle.

NOTE: Hold the selector pin against the lever to keep the dust cover from dislodging it.



53. Temporarily hand-thread the front shift gate screw about 4-5 threads into its nut-plate.



54. Install and tighten the rear shift gate screw, then remove the front screw.



55. Return the driver side cover panel to its location in the vehicle.

2-SEAT MODELS

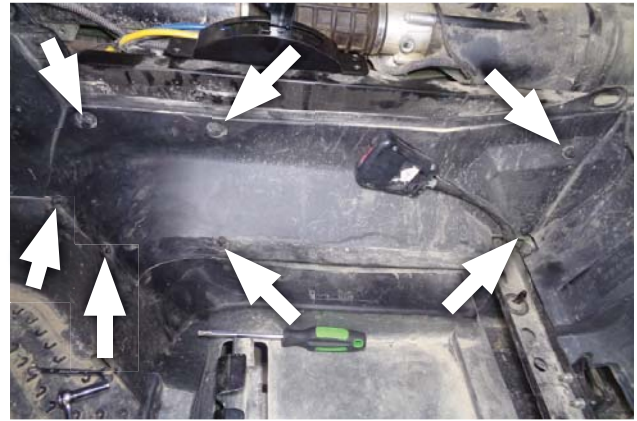


56. Verify that the front bottom corner of the cover panel is tucked beneath the rubber kick guard.



57. Secure the cover panel in place with 8 plastic push rivets. **THEN GO TO STEP 59.**

4-SEAT MODELS

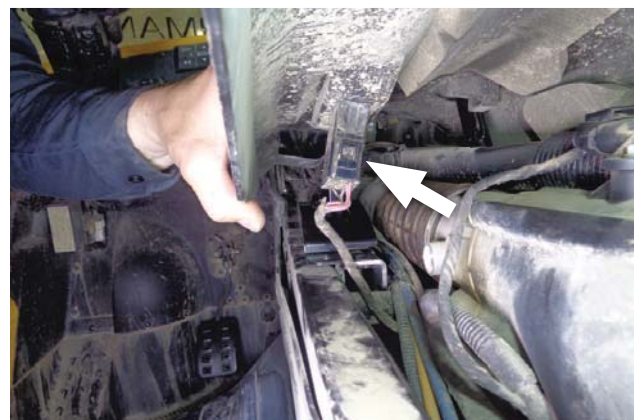


58. Secure the cover panel in place with 7 plastic push rivets.

ALL MODELS



59. Return the front console to its location in the vehicle, but do not lower it completely.



60. Under the front console, reconnect the Override switch connector, then check that the connection is secure.



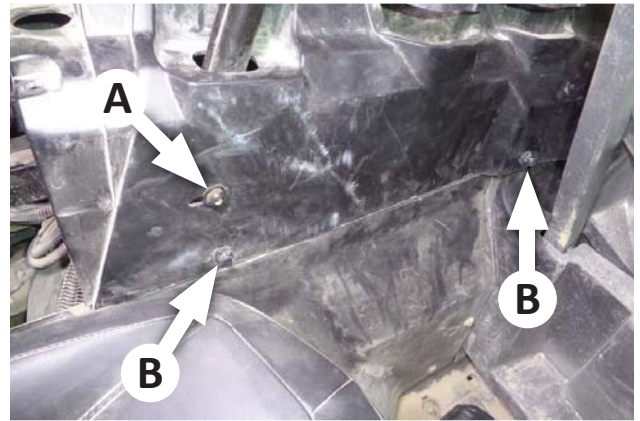
61. Lower the console into place.



64. Reinstall the 3 push rivets in the front right side of the front console.

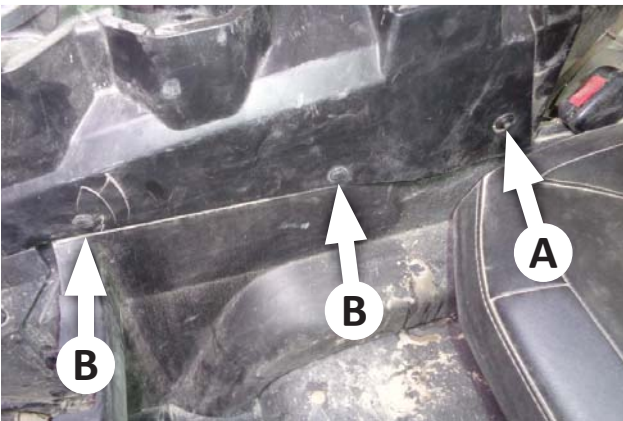


62. Install and tighten the front shift gate screw.



65. Reinstall the screw (A) and 2 push rivets (B) in the rear right side of the front console.

4-SEAT MODELS



63. Reinstall the screw (A) and 2 push rivets (B) in the rear left side of the front console.



66. Return the rear console to its location in the vehicle, then lift the lid.



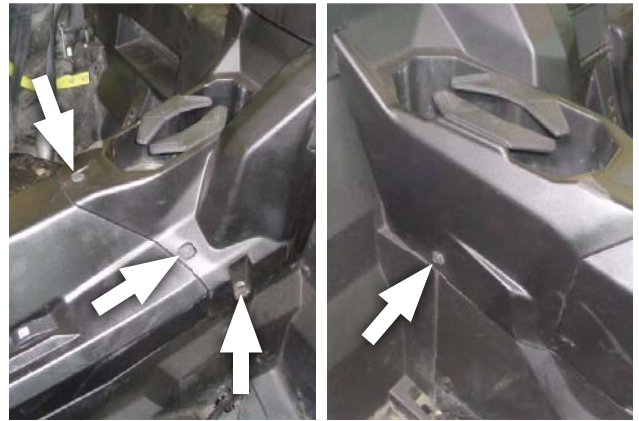
67. Reinstall 4 (of the 5 total) push rivets as shown.



70. Return the rear console to its location in the vehicle.



68. Reinstall the 5th rear console push rivet, next to the right rear seatbelt buckle. **THEN GO TO STEP 72.**



71. Reinstall the 4 push rivets in the rear console.

2-SEAT MODELS



69. Reinstall the 3 push rivets in the right side of the front console.

ALL MODELS



72. Reinstall the passenger grab handle(s).



73. Open the glove box and carefully return the control panel to its position on the dash board.



76. Reinstall the trigger lever, spring washer, and shoulder bolt.



74. Reinstall the 2 screws (A) and the 2 push rivets (B), then close the glove box.



77. Reinstall the seat(s).



75. Reinstall the 2 grip plates.



Congratulations, the installation of your XDR Magnum Grip gated shifter is now complete!