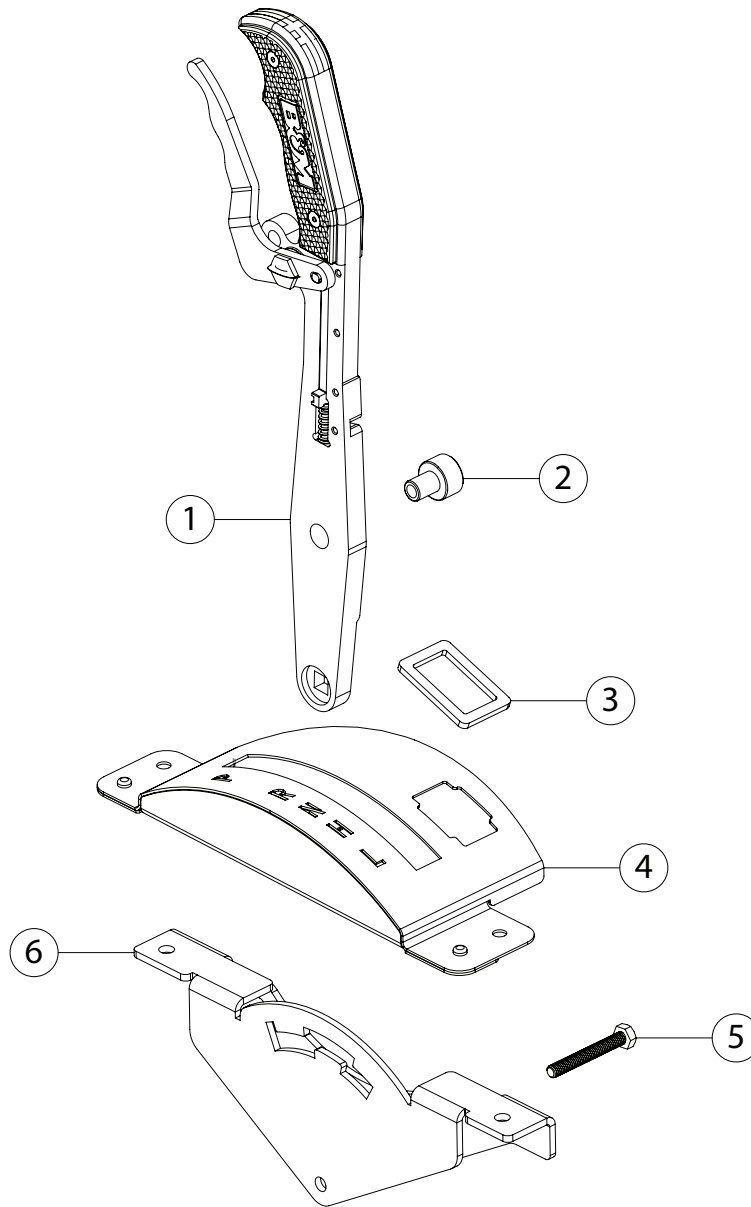




Installation Instructions
81178
 2013-18 CAN AM MAVERICK
 1000R (2-DOOR, NON-TURBO)
 Commander (2-DOOR)



ITEM	PART NO.	DESCRIPTION	QTY.
1	4001748	Gated Shifter Stick includes:	1
N/A	4001492	Left Magnum Grip Shifter Plate	1
	4001495	Right Magnum Grip Shifter Plate	1
	3401537	6-32x $\frac{5}{16}$ " Screw	4
	4001482	Black Lever	1
	4001393	Shoulder Chrome Bolt	1
	3400533	Curved Spring Washer	1
	4001286	Stop Pin Selector	1

ITEM	PART NO.	DESCRIPTION	QTY.
N/A	4001497	Selector Spring	1
	3401559	Dowel M5x18MM Pin	1
2	4001786	Pivot Sleeve	1
3	1601023	Dust Cover Gasket	1
4	4001805	Dust Cover	1
5	3401627	M6-1.0x45MM L Hex Screw	1
6	4001795	Gate Plate	1

OVERVIEW:



1. Please take a moment to read and understand these instructions before installing your purchased performance kit. Use the parts drawing and list to verify kit contents.

WARNING:

Turn off ignition and securely chock vehicle's wheels to keep it from rolling when shifter is manipulated.

REMOVE STOCK COMPONENTS:



2. Remove driver seat from vehicle.



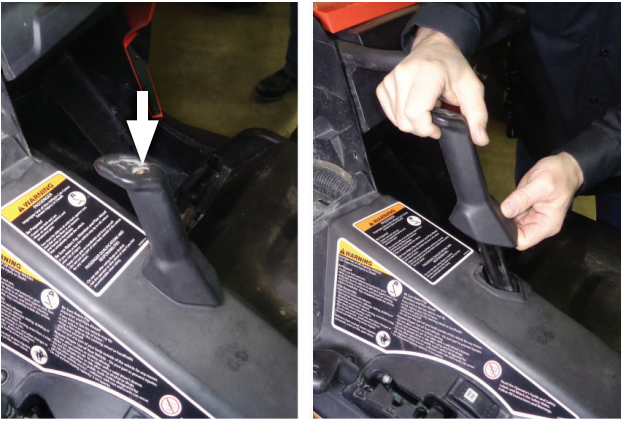
3. Remove passenger seat from vehicle.



4. Remove screws (x2) and push rivets (x2) on control panel then open glove box. Retain for later use.



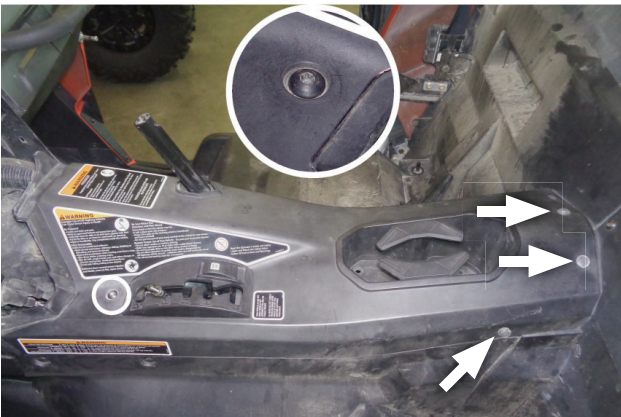
5. Remove control panel and carefully place it on top of dashboard.



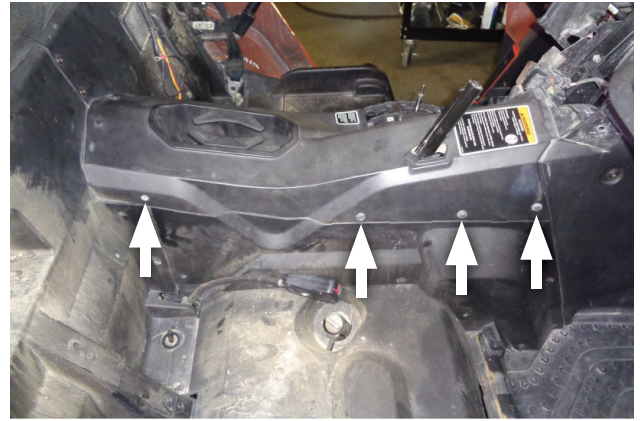
6. Remove screw from passenger grab handle then remove it by pulling straight up while twisting back and forth. Retain them for later use.



7. Shift vehicle into Reverse gear, then twist to remove factory shifter grip handle.



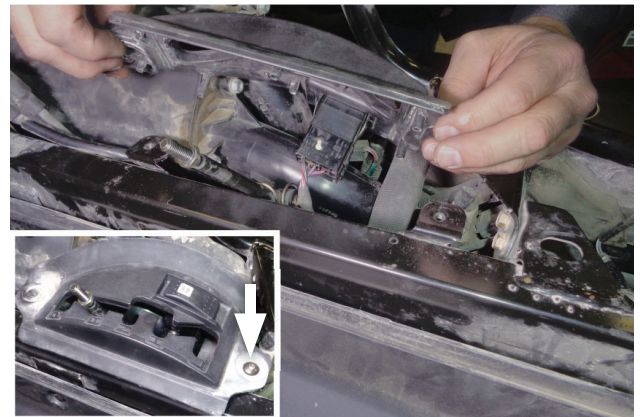
8. Remove screw and push pins (x3) securing driver side of console top. Retain for later use.



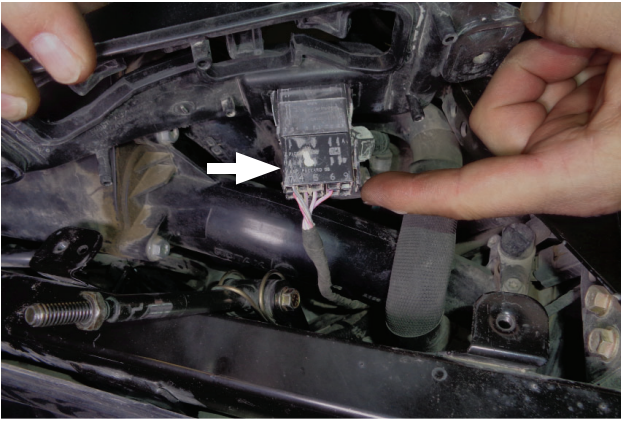
9. Remove push pins (x4) securing passenger side of console top. Retain for later use.



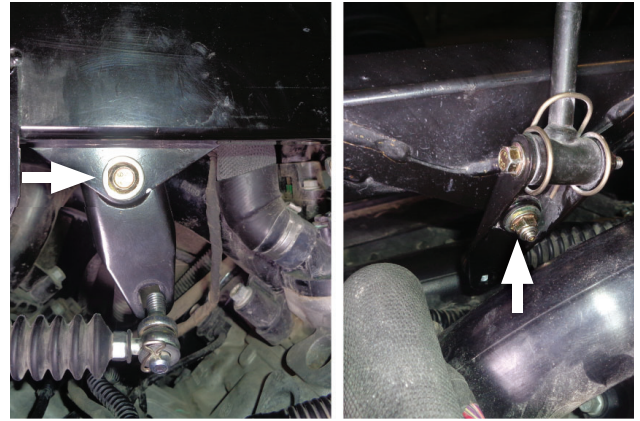
10. Remove console top. Retain for later use.



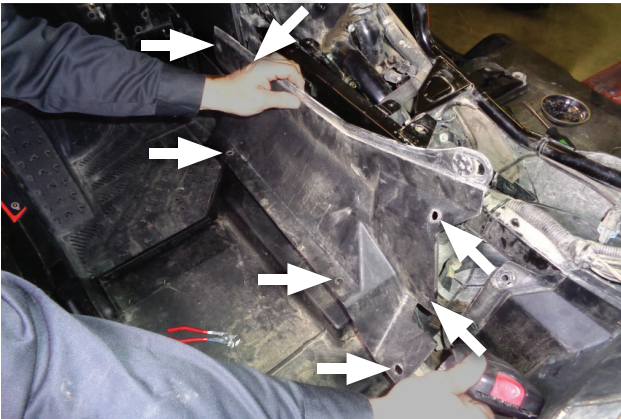
11. Remove screw then dismount factory dust cover. Retain them for later use.



12. Remove override switch connector from switch by squeezing locking tab at bottom rear of connector.



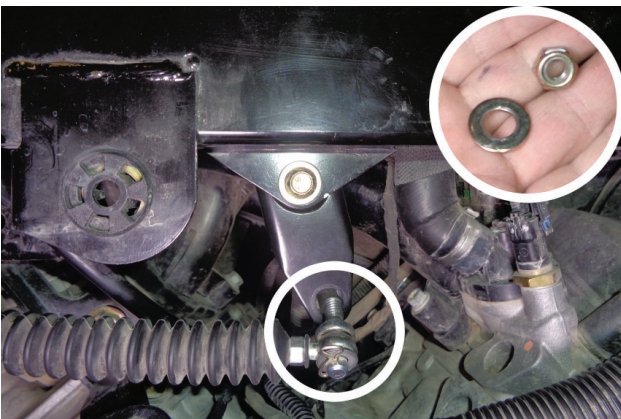
15. Remove shift lever mount screw, nut, and washers (x2), then remove lever from vehicle. Retain nut and washer for later use.



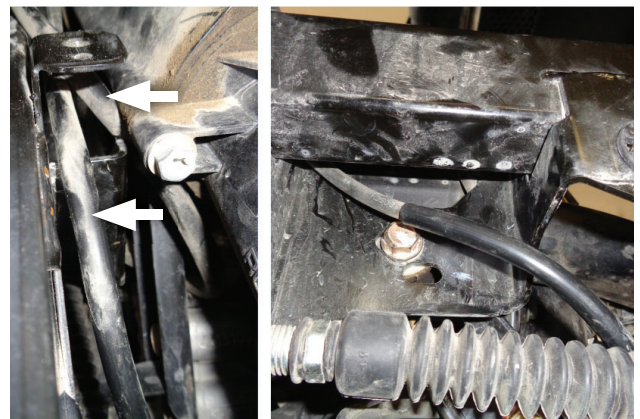
13. Remove push pins (x7) and driver side cover panel from vehicle. Retain them for later use.



16. Remove metal sleeve and plastic bushings (x2) from shift lever. Retain bushings (x2) for later use.



14. Disconnect shift cable from shift lever by removing nut and washer. Retain nut for later use.

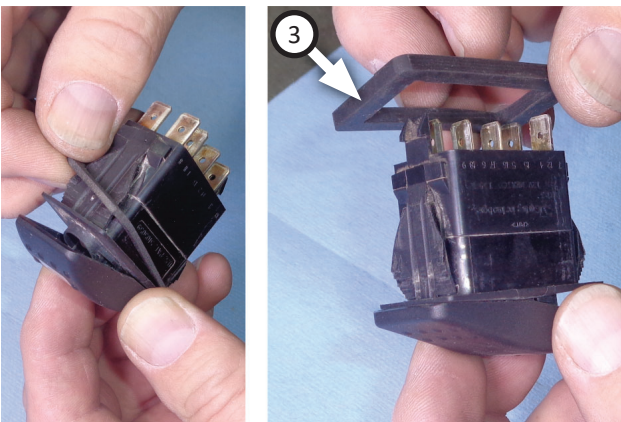


17. In vehicle, move wiring below shifter location clear from chafing against shifter.



18. Remove override switch (step 12) from factory dust cover (step 11).

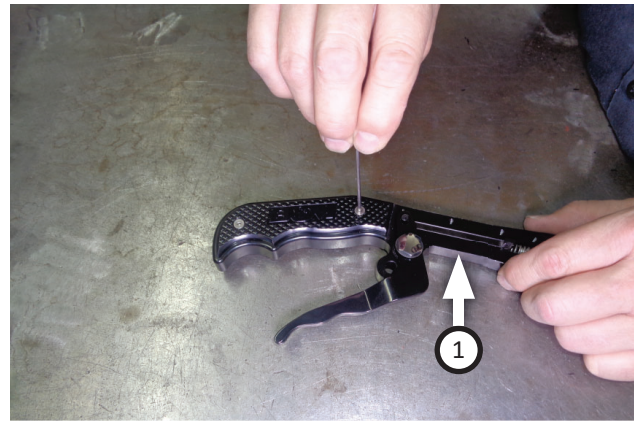
Assemble and install XDR Gated Shifter kit:



19. Replace factory gasket on override switch (from previous step) with **dust cover gasket (3)**.



20. Insert override switch assembly into **dust cover (4)** as shown.



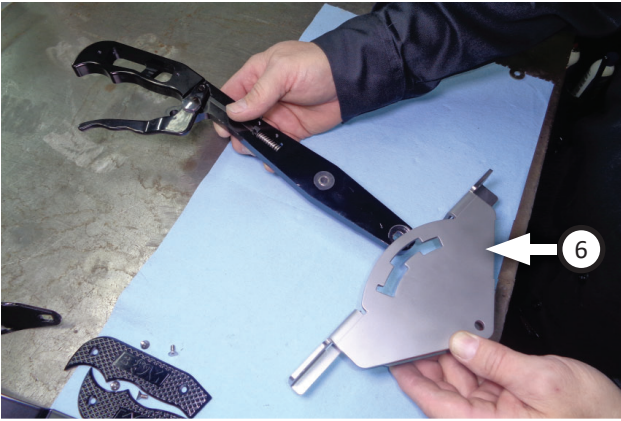
21. Remove screws (x4) and grip shifter plates (left and right) from **gated shifter stick (1)**. Retain them for later use.



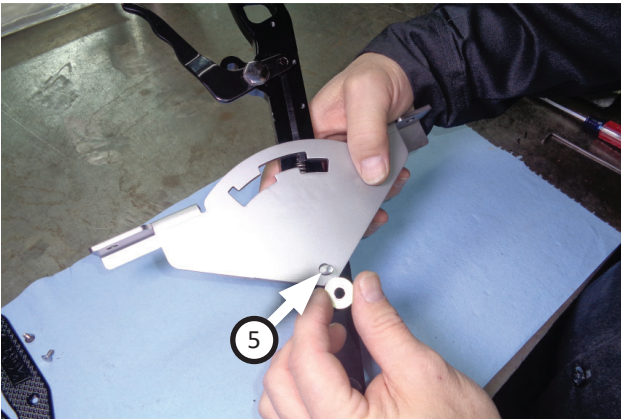
22. Insert plastic bushings (x2) (removed step 16) into both sides of gated shifter stick as shown.



23. Insert **pivot sleeve (2)** into plastic bushing from passenger side of gated shifter stick.



24. With gated shifter stick and **gate plate (6)** oriented as shown (driver side up), insert shifter stick into gate.

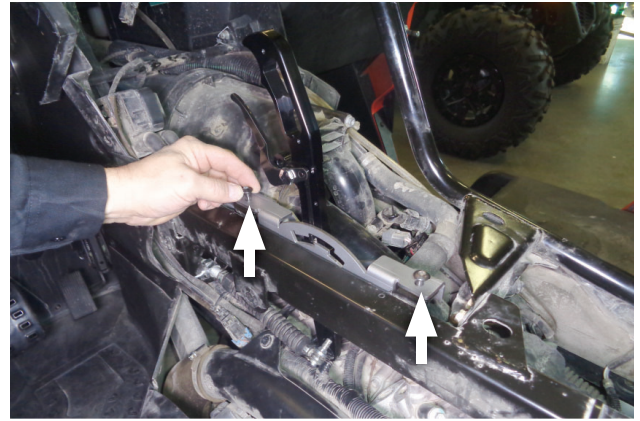


25. Insert **hex screw (5)** through passenger side gate plate and shifter stick. Then turn assembly over and set washer (removed step 15) onto hex screw.



NOTE: Washer must sit between frame and gate plate.

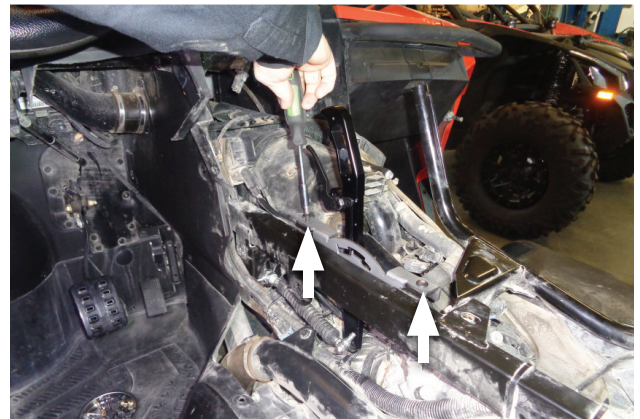
26. Move shifter stick onto PARK position then insert pivot screw into shifter mount hole in vehicle frame.



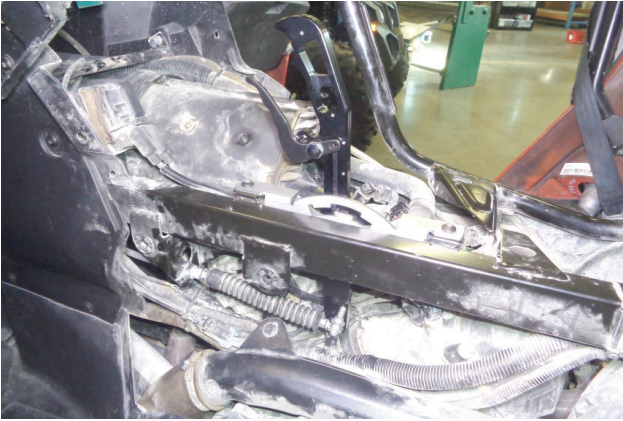
27. Secure shifter stick assembly into center console by setting screws (x2) (removed steps 8 and 11) into position as shown.



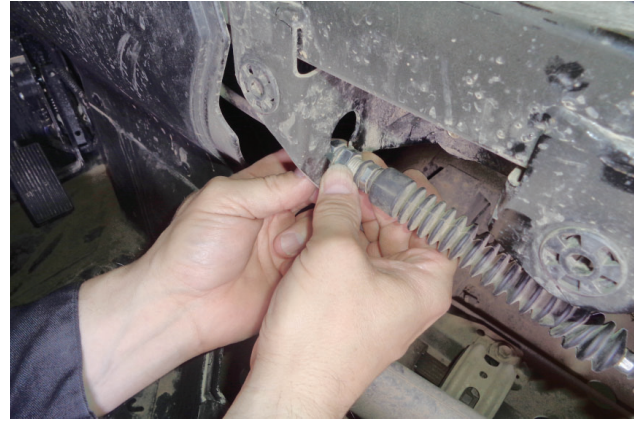
28. Fasten shifter assembly together by threading nut (removed step 15) onto end of hex screw (installed step 25) and tightening them.



29. Temporarily tighten both shift gate screws.



30. Move shifter stick into REVERSE. Keep shifter stick in REVERSE until shift cable has been adjusted and connected, and jam nuts have been tightened.



33. Turn both cable adjustment jam nuts back by hand until they are equally snug against bracket.



31. Loosen cable adjustment jam nuts, back them away from bracket just enough to allow cable end screw to easily reach hole in stick shifter.



34. Tighten both jam nuts equally against bracket.



32. Insert cable end screw into hole in stick shifter. Make sure its square profile seats properly in hole, then install and tighten nut (removed step 14).



NOTE: Ensure there is no contact between bottom of stick shifter and wiring.

35. Move shifter through all 5 positions and verify they each correspond to their detent. If not, adjust cable length as required.

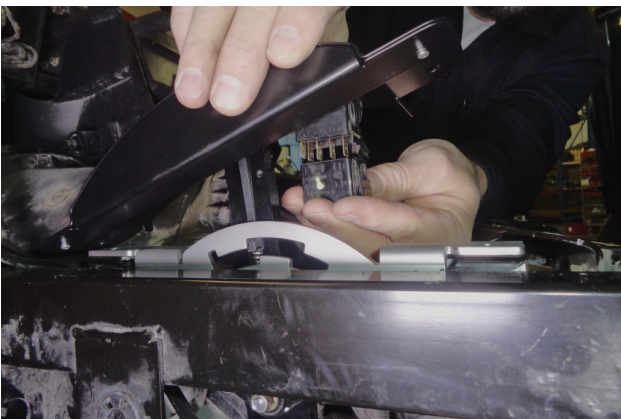


NOTE: Be careful not to lose curved spring washer as you complete this step.

36. Temporarily remove shoulder bolt, curved spring washer, and black lever.



37. Remove both shift gate screws.



NOTE: Hold selector pin against shifter to keep dust cover from dislodging as you complete this step.

38. Slip dust cover over stick shifter then plug override switch connector back in.



39. Temporarily hand-thread front shift gate screw about 4-5 threads into nut-plate. Install and tighten rear shift gate screw, then remove front screw.



40. Return driver side cover panel to its location in vehicle and fasten it by installing push pins (x7) (removed step 13).



41. Return console top (removed step 10).



42. Fasten console top driver side using push pins (x3) (removed step 8). Then install front shift gate screw to secure shifter stick assembly.



43. Fasten console top passenger side by installing push pins (x4) (removed step 9).



44. Install and fasten passenger grab handle using screw (removed step 6).



45. Install control panel (removed step 5) back in place onto dashboard. Install (x2 ea.) screws and push rivets (removed step 4) to fasten panel.



46. Install screws (x4) and grip shifter plates (x2) (removed step 21) onto shifter stick.



47. Install shoulder bolt, curved spring washer and black lever (removed step 36) onto shifter stick.



48. Install passenger seat back into vehicle.



49. Install driver seat back into vehicle.



Congratulations, the installation of your XDR Gated Shifter is now complete!

SHOP MORE XDR PRODUCTS:

XDR is a Powersports division resulting from a joint effort by B&M Racing and Flowmaster to provide customers with the ultimate in off-road performance. To access a full range of XDR SXS/UTV products (like those pictured below) visit the website listed at the bottom of the page.



[View other powersports chrome trim and custom accessories made by XDR Off-Road on our website.](#)