

ITM #	PART #	DESCRIPTION	QTY.
1	4001837	Shifter Stick	1
2	4001849	Gate Plate	1
3	4001845	Dust Cover	1
4	4001847	Pivot Sleeve	1
HIGHLIGHTED PARTS SHIP PRE-ASSEMBLED ON STICK			
5	4001492	Left Shifter Plate	1
6	4001495	Right Shifter Plate	1
7	4001482	Black Lever	1
8	4001393	Shoulder Bolt	1

ITM #	PART #	DESCRIPTION	QTY.
9	4001286	Pin Selector	1
10	4001497	Selector Spring	1
11	3400533	Curved Spring Washer	1
12	3401537	6-32 x 3/16" Screw	4
13	3401559	M5 x 18mm Pin	1
14	3401560	3/16-18 Nylock Nut	2
15	3401561	3/16-18 x 3/4" Hex Head Screw	2
16	3401562	3/16" Flat Washer	2
17	3401645	3/8 OD x .252 ID x 3/8 L Spacer	1

OVERVIEW:



1. Please take a moment to read and understand these instructions before installing your purchased performance kit.

NOTE: Please inventory all parts before starting the installation process and call our tech line to report any missing parts. This will help avoid potentially stranding your vehicle until any missing replacement parts arrive.

WARNING:

For maximum safety, perform this installation on a clean, level surface with engine turned off.

CAUTION:

Chock wheels and apply parking brake; do not proceed until you are confident your vehicle will not move.

PREPARE VEHICLE FOR INSTALLATION:



2. Remove driver and passenger seats.



3. Set shifter into "Reverse" then remove shifter handle.



4. Remove screws (x3) and lift top cover off of center console. Retain them for later use.



5. Remove screw and lift seat buckle cover off of center console. Retain them for later use.



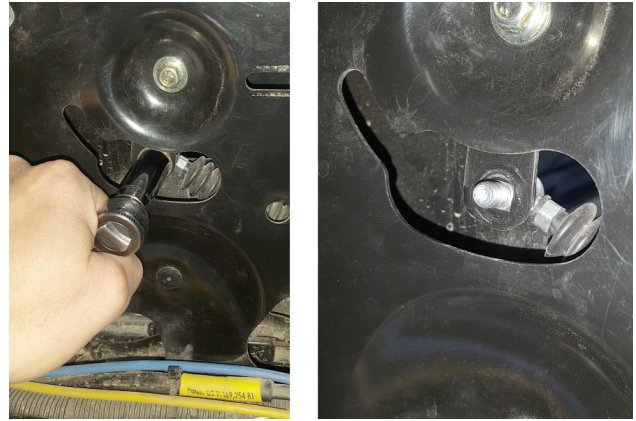
6. Remove fasteners (x5) from driver and passenger console side covers. Retain them for later use.



7. Remove driver and passenger console side covers. Retain them for re-install.



8. Remove screws (x4) and factory shifter dust cover from shifter. Retain screws for later use.



9. Remove shifter cable nut and washer on driver side of shifter. Retain nut for later use.



10. Remove shifter bolt, flat washers (x2) and nut. Retain them for later use.

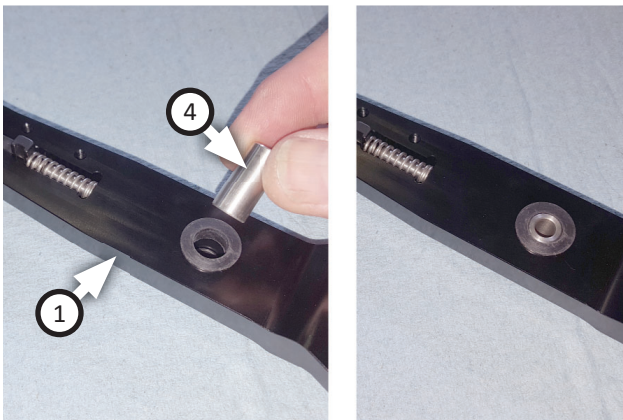


11. Remove factory shifter stick assembly from vehicle.



12. Remove and retain plastic sleeves (x2) from factory shifter stick.

INSTALL XDR MAGNUM GRIP SHIFTER:



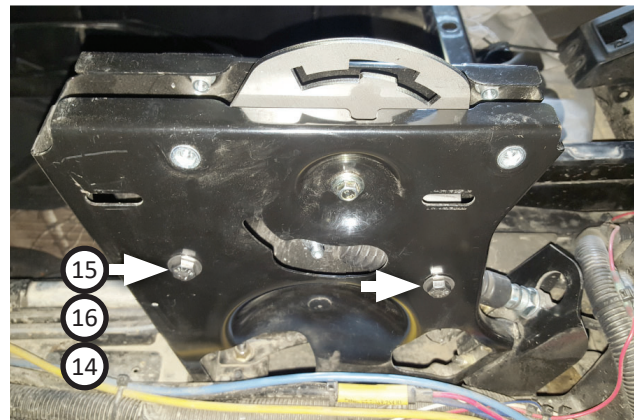
13. Install plastic sleeves (x2) (removed previous step) and pivot sleeve (4) into shifter stick (1).



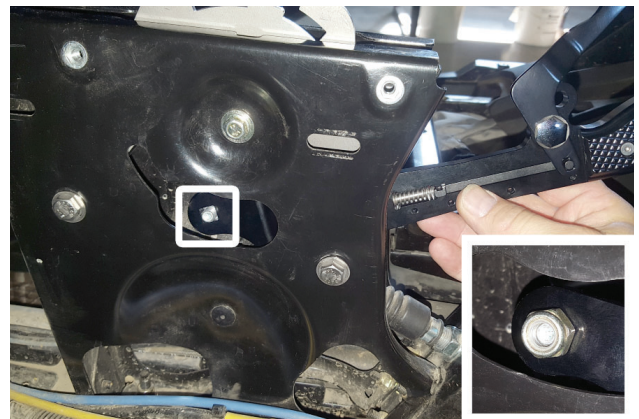
14. Insert shifter bolt and flat washer (removed step 10) in through driver side shifter frame and spacer (17).



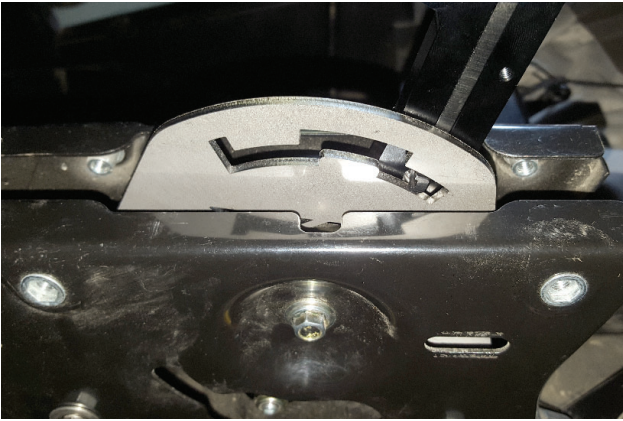
15. Place gate plate (2) into shifter frame and slide shifter bolt through it then out passenger side.



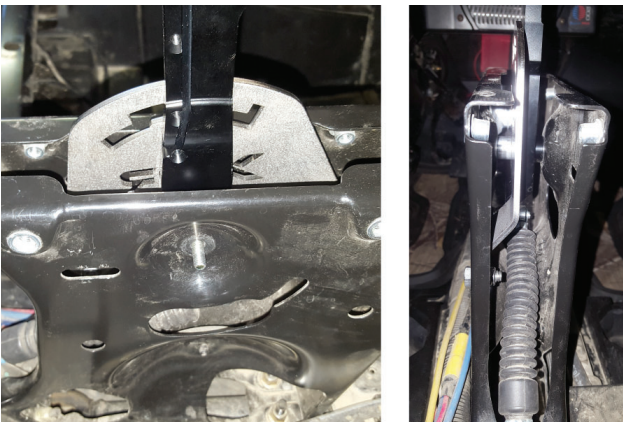
16. Secure gate plate loosely to shifter frame using (x2 ea.) screws (15) and flat washers (16) through frame, gate plate and nuts (14).



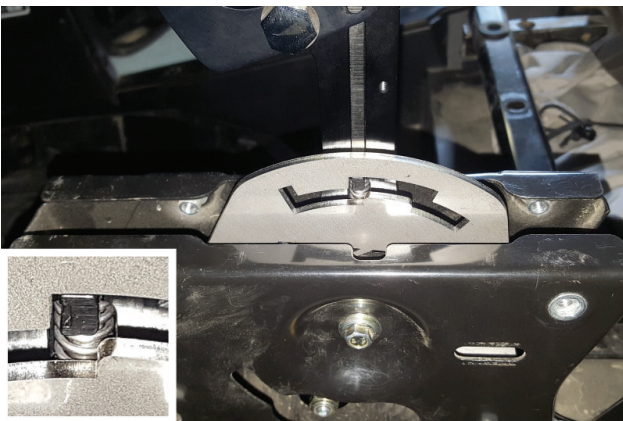
17. Place shifter stick in through frame with lever facing forward then insert shifter cable into it. Fasten cable to stick using cable nut (removed step 9).



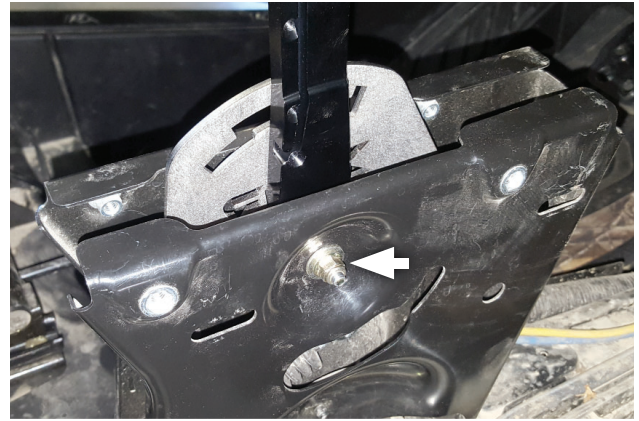
18. Bring stick partially up into position, then engage trigger until **pin selector (9)** sets flush against gate plate.



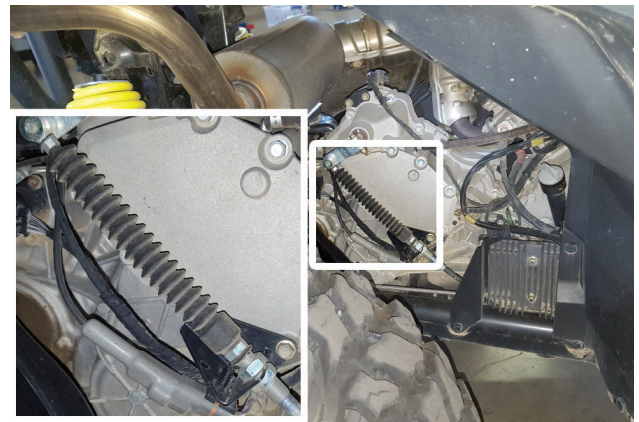
19. Pull shifter bolt assembly partially out (not enough for spacer to drop out) while pushing stick into position. Then insert bolt assembly through stick and shifter frame.



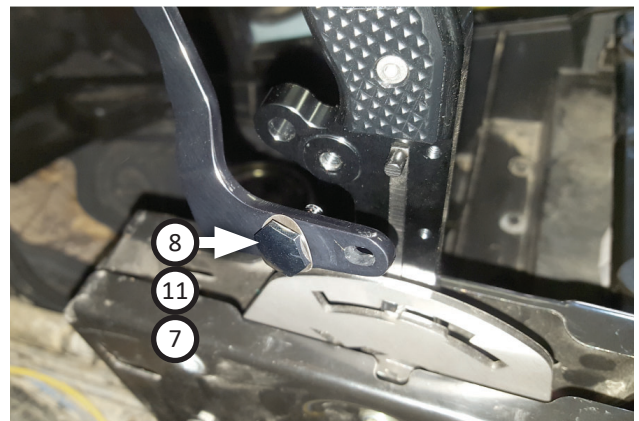
20. Set stick pin selector precisely into "Reverse".
NOTE: A shifter cable has roughly 2-3 millimeters of slack before it engages transmission. Set gate in the middle of that slack.



21. Fasten shifter bolt to frame using flat washer and nut (removed step 10). Tighten all nuts and bolts securing shifter assembly then check cable position and shifter position in remaining gears.



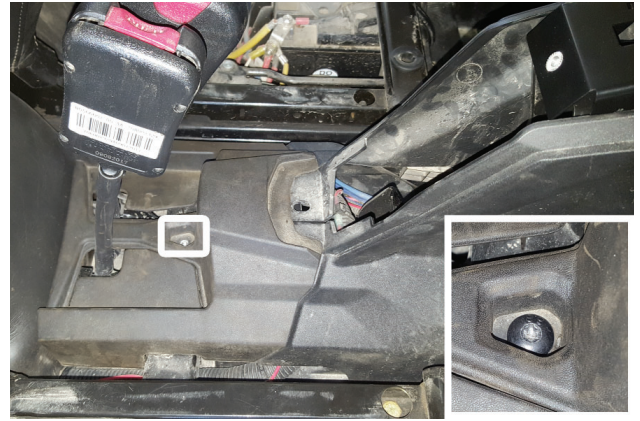
22. If necessary, you can now make fine adjustments to your cable at bracket location, moving nuts towards either end until each "Reverse" feels correct. Tighten all fasteners once finished.



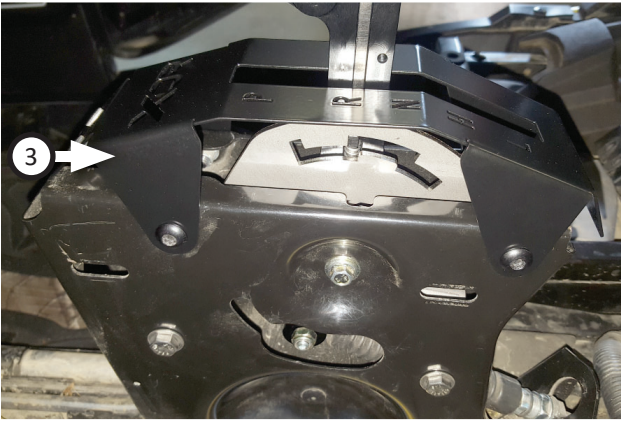
23. Disassemble **shoulder bolt (8)**, **curved spring washer (11)** and **black lever (7)** from stick. Retain them for later use.



24. Disassemble screws (x4) (12), left (5) and right (6) shifter plates and retain them for later use.



27. Re-install seat buckle cover and screw onto center console (removed step 5).



25. Set dust cover (3) over stick then fasten it to shifter frame using screws (removed step 8).



28. Re-install top cover and screws (x3) onto center console (removed step 4).



26. Re-install driver and passenger console side covers (removed step 7). Re-install fasteners (x5) (removed step 6).



29. Re-install both shifter plates and screws (x4) (removed step 24). Then re-install lever, spring washer and bolt (removed step 23).



30. Re-install driver and passenger seats.



31. These are factory components not used with this kit.



Congratulations, the installation of your XDR Off-Road Magnum Grip Shifter kit is now complete!

SHOP MORE XDR PRODUCTS:



XDR is our Powersports division resulting from a joint effort by B&M Performance & Off-Road and Flowmaster to provide customers with the ultimate in off-road performance. To access a full range of XDR Off-Road SXS/UTV products, visit our website listed at the bottom of the page.

