

## HELMETS

### (E) Head Circumference Measurement Instructions

Measure the largest part of your head horizontally, approximately one (1) inch above your eyebrows & ears. *(If the result ends up between sizes, try the smaller first.)*

**A properly fitted helmet should not be able to move from side to side OR up and down when the strap is fastened.**



### YOUTH SIZES

HELMET SIZE YOUTH	Small	Medium	Large
<b>(E)</b> CIRCUMFERENCE (IN)	19.15" - 19.50"	20.10" - 20.45"	20.87" - 21.26"
<b>(E)</b> CIRCUMFERENCE (CM)	49-50	51-52	53-54

### ADULT SIZES

HELMET SIZE ADULT	HAT SIZE	<b>(E)</b> CIRCUMFERENCE (IN)	<b>(E)</b> CIRCUMFERENCE (CM)
XXS	6-3/8" - 6-1/2"	20-1/8" - 20-1/2"	51-52
XS	6-5/8" - 6-3/4"	20-7/8" - 21-1/4"	53-54
S	6-7/8" - 7"	20-5/8" - 22"	55-56
M	7-1/8" - 7-1/4"	22-1/2" - 22-7/8"	57-58
L	7-3/8" - 7-1/2"	23-1/4" - 23-5/8"	59-60
XL	7-5/8" - 7-3/4"	24" - 24-3/8"	61-62
2X	7-7/8" - 8"	24-3/4" - 25-1/2"	63-64
3X	8-1/8" - 8-1/4"	25-5/8" - 26"	65-66
4X	8-3/8" - 8-1/2"	26-3/8" - 26-3/4"	67-68
5X	8-5/8" - 8-3/4"	27-1/8" - 27-1/2"	69-70

## GLOVES & MITTENS

### (F) Hand Measurement Instructions

1. Hold hand in front of you, palm down.
2. Measure loosely around the widest part of your hand *(over knuckles)* between the thumb and pointer finger.



### ADULT SIZES

XS	S	M	L	XL	XXL
6-6.5"	6.5-7.5"	7.5-8.25"	8.5-9"	9-9.75"	9.75-10.5"

**This guide, which shows instructions on how to measure your body for proper gear fitment, is meant for Katahdin Extreme Gear and Zoan Helmets ONLY.**

**\*Other Manufacturer's Sizes may vary\***

# HELMETS

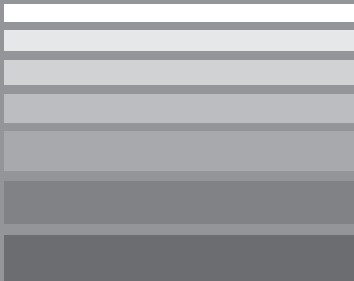
- helmets
- eyewear
- headgear
- jackets
- t-shirts & sweatshirts
- bibs & pants
- gloves
- boots
- protection



Exclusively Distributed in the United States by:  
**AUTOMATIC DISTRIBUTORS**



## Why Zoan?



ZOAN has made it a goal to develop a series of helmet models for the North American powersport enthusiast, achieving the North American fit complete with finish and features.

So whether you are looking for an ATV, Motocross, Motorcycle or Snowmobile helmet, ZOAN offers a wide variety of models to suit your individual needs.

We at Automatic Distributors take Pride in the ZOAN Brand, and that's why we chose to become the sole distributor of ZOAN Helmets in the United States.



FLUX 4.1  
"DEVIL"

**P.12/13**



FLUX 4.1  
"SOLID COLORS"

**P.14/15**



FLUX 4.1  
"COMMANDER"

**P.16/17**



OPTIMUS  
"ECLIPSE"

**P.18/19**



OPTIMUS  
"SOLID COLORS"

**P.20/21**



OPTIMUS  
"RACELINE"

**P.22/23**



THUNDER  
"ELECTRA"

**P.24/25**



THUNDER  
"SOLID COLORS"

**P.26/27**



THUNDER  
"ELECTRA" (YOUTH)

**P.28/29**



THUNDER  
"SOLID COLORS" (YOUTH)

**P.30/31**



GOLIATH  
"SOLID COLORS"

**P.32/33**



BLADE SV  
"SOLID COLORS"

**P.34/35**



BLADE SV  
"REBORN"

**P.36**



BLADE SV  
"JOKER"

**P.37**



SYNCHRONY DUO  
"TOURER"

**P.38/39**



SYNCHRONY DUO  
"SOLID COLORS"

**P.40/41**



SYNCHRONY MX  
"RACE EQUIPE"

**P.42/43**



SYNCHRONY MX  
"MONSTER"

**P.44/45**



MX-1 & 2  
"SNIPER"

**P.46-49**



ROUTE 66  
"CARBON/SOLID"

**P.50/51**



ROUTE 66  
"BUTTERFLY/GHOST/SKULL"

**P.52/53**



ROUTE 1  
"SOLID COLORS"

**P.54**



3/4 RETRO  
"SOLID COLORS"

**P.55**



HELMET SIZE (YOUTH)	CIRCUMFERENCE
S	19.15" - 19.50"
M	20.15" - 20.45"
L	20.87" - 21.26"



**Get in the ZOAN...  
that's right for you!**

HELMET SIZE (ADULT)	CIRCUMFERENCE
XXS	20-1/8" - 20-1/2"
XS	20-7/8" - 21-1/4"
S	20-5/8" - 22"
M	22-1/2" - 22-7/8"
L	23-1/4" - 23-5/8"
XL	24" - 24-3/8"
2X	24-3/4" - 25-1/2"
3X	25-5/8" - 26"
4X	26-3/8" - 26-3/4"
5X	27-1/8" - 27-1/2"

### Head Circumference Measurement Instructions

Measure the largest part of your head horizontally, approximately one (1) inch above your eyebrows & ears.

NOTE: If the result ends up being between sizes, we recommend trying the smaller size first.

**A properly fitted helmet should not be able to move from side to side OR up and down when the strap is fastened.**

## Single, Double, or Electric... What Shield should I choose?



**Single**



Used for:



Description:

The Single Shield is recommended for both Offroad and Street use, but is not recommended for Snowmobile use.



**Double**



Used for:



Description:

The Double Shield is the choice for many Snowmobilers as the double pane helps to reduce or eliminate fogging for the rider, allowing for better visibility.

Includes:

Snow  
Breath Guard



**Electric**



Used for:



Description:

The Electric Shield is a Great Choice for the Snowmobile Enthusiast where harsh temperatures and inclement weather play a factor. In most cases, fogging is eliminated, giving the rider maximum visibility.

Includes:

Snow  
Breath Guard

helmets

eyewear

headgear

jackets

t-shirts &  
sweatshirts

bibs &  
pants

gloves

boots

protection

# HELMETS

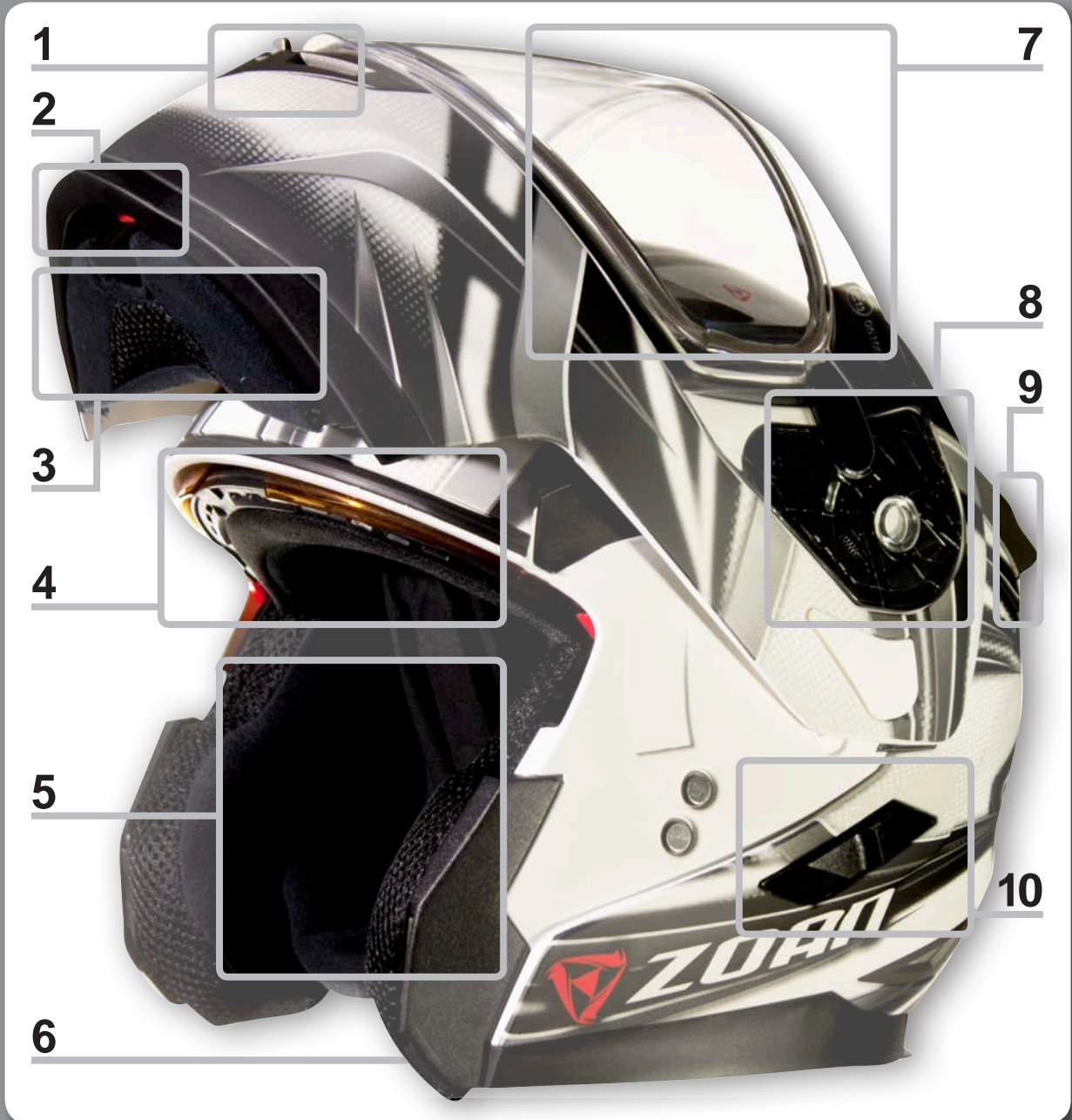
- helmets
- eyewear
- headgear
- jackets
- t-shirts & sweatshirts
- bibs & pants
- gloves
- boots
- protection



Exclusively Distributed in the United States by:  
**AUTOMATIC DISTRIBUTORS**



## FEATURES



NOTE: Helmet Shown is **FOR REFERENCE ONLY** and may not have all the features listed.



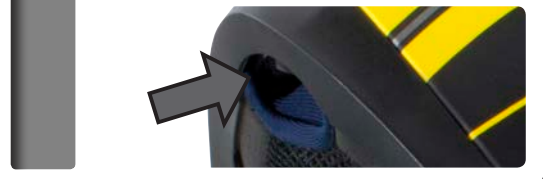
## 1 Adjustable Jaw Vents

Adjustable Jaw ventilation



## 2 Single Hand Modular Push-Button Release

(Modular Helmets only)



## 3 Adjustable Breath Guard & Chin Curtain

Velcro (or snap) adjustable Breath Guards and Chin Curtains



## 4 Inner Sun Shield



## 5 Removable Liners

Removable and Replaceable hypo-allergenic washable liners

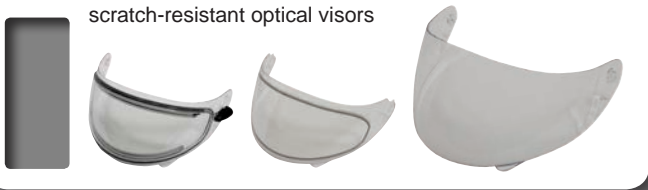


## 6 Quick-Release Chin Strap



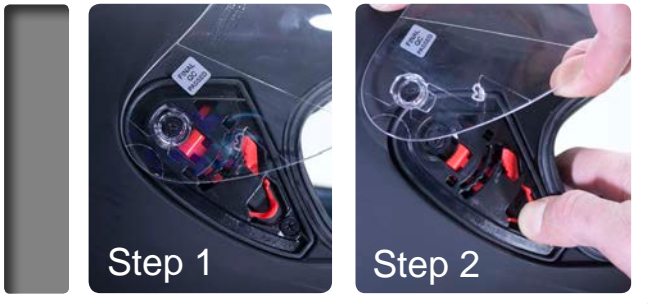
## 7 Scratch Resistant Shields

ZOAN helmets feature LEXAN scratch-resistant optical visors



## 8 No-Tool Shield Change

(Select Models)



## 9 Intake/Exhaust Vents

Zoan helmets are designed with your comfort in mind. They provide maximum ventilation through a combination of **UPTO** 14 Intake & Exhaust Vents



## 10 Single Hand Lever, Sun Shield Operation



- helmets
- eyewear
- headgear
- jackets
- t-shirts & sweatshirts
- bibs & pants
- gloves
- boots
- protection

\* Not all models have the features shown - See helmet description for the features of a specific model

# HELMETS

- helmets
- eyewear
- headgear
- jackets
- t-shirts & sweatshirts
- bibs & pants
- gloves
- boots
- protection

## FLUX 4.1 MODULAR HELMET



### DEVIL GRAPHICS

(Featuring NEW Snap Breath Guard)



RED

### FEATURES

Comes Standard With A Single Lens Shield (Street)

- Two-piece modular helmet
- Injection alloy thermoplastic construction
- Two EPS interiors (XS-M) (L-2X)
- Scratch resistant HD Amber color inner sun shield; hard coated with special anti-fog treatment
- Easy one-button hand release to open modular helmet
- Removable, hypo-allergenic, machine-washable interior secured by snaps
- Removable inner and outer shields- tools not required
- **Ventilation INTAKE:** Jaw & Forehead(2).
- **Ventilation EXHAUST:** Top(2) & Bottom(2). Provides maximum ventilation and ultimate comfort.
- **Fabric helmet bag included**



BLUE

GREEN

YELLOW

ORANGE



MATTE WHITE

PINK

SILVER



Choose from:  
SINGLE LENS  
DOUBLE LENS  
ELECTRIC SHIELD



**FLUX 4.1 SNOWMOBILE HELMETS**  
come fitted with your choice of  
Anti-Fog Double Lens Outer Shield OR Electric Shield.  
ALSO INCLUDES:  
**Snow Breath Guard**

## FLUX 4.1 MODULAR HELMET



- helmets
- eyewear
- headgear
- jackets
- t-shirts & sweatshirts
- bibs & pants
- gloves
- boots
- protection



1-BUTTON OPERATION

ANTI-FOG  
SUN SHIELD



FLUX 4.1 "DEVIL" GRAPHICS ACCEPT  
A NEW "SNAP" (VS VELCRO)  
BREATH GUARD

ALSO AVAILABLE IN  
BLACK & MATTE BLACK (P. 14/15)

ACTUAL BREATH GUARD MAY VARY

COLOR	XS	S	M	L	XL	2X
<b>FLUX 4.1 SINGLE LENS (STREET)</b>						
DEVIL GRAPHICS						
RED	9150601	9150602	9150603	9150604	9150605	9150606
BLUE	9150701	9150702	9150703	9150704	9150705	9150706
GREEN	9150301	9150302	9150303	9150304	9150305	9150306
YELLOW	9150401	9150402	9150403	9150404	9150405	9150406
ORANGE	9150501	9150502	9150503	9150504	9150505	9150506
MATTE WHITE	9150101	9150102	9150103	9150104	9150105	9150106
PINK	9150901	9150902	9150903	9150904	9150905	9150906
SILVER	9150801	9150802	9150803	9150804	9150805	9150806
<b>FLUX 4.1 DOUBLE LENS (SNOW)</b>						
DEVIL GRAPHICS						
RED	9250601	9250602	9250603	9250604	9250605	9250606
BLUE	9250701	9250702	9250703	9250704	9250705	9250706
GREEN	9250301	9250302	9250303	9250304	9250305	9250306
YELLOW	9250401	9250402	9250403	9250404	9250405	9250406
ORANGE	9250501	9250502	9250503	9250504	9250505	9250506
MATTE WHITE	9250101	9250102	9250103	9250104	9250105	9250106
PINK	9250901	9250902	9250903	9250904	9250905	9250906
SILVER	9250801	9250802	9250803	9250804	9250805	9250806
<b>FLUX 4.1 ELECTRIC SHIELD (SNOW)</b>						
DEVIL GRAPHICS						
RED	9350601	9350602	9350603	9350604	9350605	9350606
BLUE	9350701	9350702	9350703	9350704	9350705	9350706
GREEN	9350301	9350302	9350303	9350304	9350305	9350306
YELLOW	9350401	9350402	9350403	9350404	9350405	9350406
ORANGE	9350501	9350502	9350503	9350504	9350505	9350506
MATTE WHITE	9350101	9350102	9350103	9350104	9350105	9350106
PINK	9350901	9350902	9350903	9350904	9350905	9350906
SILVER	9350801	9350802	9350803	9350804	9350805	9350806

SEE PAGES 2 & 3 FOR FITMENT INFORMATION

# HELMETS

- helmets
- eyewear
- headgear
- jackets
- t-shirts & sweatshirts
- bibs & pants
- gloves
- boots
- protection

## FLUX 4.1 MODULAR HELMET



### SOLID COLORS



BLACK

### FEATURES

Comes Standard With A Single Lens Shield (Street)

- Two-piece modular helmet
- Injection alloy thermoplastic construction
- Two EPS interiors (XS-M) (L-2X)
- Scratch resistant HD Amber color inner sun shield; hard coated with special anti-fog treatment
- Easy one-button hand release to open modular helmet
- Removable, hypo-allergenic, machine-washable interior secured by snaps
- Removable inner and outer shields- tools not required
- **Ventilation INTAKE:** Jaw & Forehead(2).
- **Ventilation EXHAUST:** Top(2) & Bottom(2). Provides maximum ventilation and ultimate comfort.
- **Fabric helmet bag included**



MATTE BLACK



SILVER



WHITE

Choose from:  
SINGLE LENS  
DOUBLE LENS  
ELECTRIC SHIELD



**FLUX 4.1 SNOWMOBILE HELMETS**  
come fitted with your choice of  
Anti-Fog Double Lens Outer Shield OR Electric Shield.  
ALSO INCLUDES:  
Snow Breath Guard





- helmets
- eyewear
- headgear
- jackets
- t-shirts & sweatshirts
- bibs & pants
- gloves
- boots
- protection

**\* ACCEPTS (OR INCLUDES) "SNAP" BREATH GUARD VS "VELCRO" (SEE PAGE 13)**

COLOR	XS	S	M	L	XL	2X
<b>FLUX 4.1 SINGLE LENS (STREET)</b>						
<b>SOLID COLORS</b>						
BLACK	9120201	9120202	9120203	9120204	9120205	9120206
BLACK*	9150201	9150202	9150203	9150204	9150205	9150206
MATTE BLACK	9120211	9120212	9120213	9120214	9120215	9120216
MATTE BLACK*	9151201	9151202	9151203	9151204	9151205	9151206
SILVER	9120811	9120812	9120813	9120814	9120815	9120816
WHITE	9120111	9120112	9120113	9120114	9120115	9120116
<b>FLUX 4.1 DOUBLE LENS (SNOW)</b>						
<b>SOLID COLORS</b>						
BLACK	9220201	9220202	9220203	9220204	9220205	9220206
BLACK*	9250201	9250202	9250203	9250204	9250205	9250206
MATTE BLACK	9220211	9220212	9220213	9220214	9220215	9220216
MATTE BLACK*	9251201	9251202	9251203	9251204	9251205	9251206
SILVER	9220811	9220812	9220813	9220814	9220815	9220816
WHITE	9220111	9220112	9220113	9220114	9220115	9220116
<b>FLUX 4.1 ELECTRIC SHIELD (SNOW)</b>						
<b>SOLID COLORS</b>						
BLACK	9320201	9320202	9320203	9320204	9320205	9320206
BLACK*	9350201	9350202	9350203	9350204	9350205	9350206
MATTE BLACK	9320211	9320212	9320213	9320214	9320215	9320216
MATTE BLACK*	9351201	9351202	9351203	9351204	9351205	9351206
SILVER	9320811	9320812	9320813	9320814	9320815	9320816
WHITE	9320111	9320112	9320113	9320114	9320115	9320116

**SEE PAGES 2 & 3 FOR FITMENT INFORMATION**

# HELMETS

- helmets
- eyewear
- headgear
- jackets
- t-shirts & sweatshirts
- bibs & pants
- gloves
- boots
- protection

## FLUX 4.1 MODULAR HELMET



### COMMANDER GRAPHICS



MATTE WHITE

### FEATURES

Comes Standard With A Single Lens Shield (Street)

- Two-piece modular helmet
- Injection alloy thermoplastic construction
- Two EPS interiors (XS-M) (L-2X)
- Scratch resistant HD Amber color inner sun shield; hard coated with special anti-fog treatment
- Easy one-button hand release to open modular helmet
- Removable, hypo-allergenic, machine-washable interior secured by snaps
- Removable inner and outer shields- No Tools Required
- **Ventilation INTAKE:** Jaw & Forehead(2).
- **Ventilation EXHAUST:** Top(2) & Bottom(2). Provides maximum ventilation and ultimate comfort.
- **Fabric helmet bag included**



GREEN



YELLOW



ORANGE



RED



BLUE



SILVER



PINK



Choose from:  
SINGLE LENS  
DOUBLE LENS  
ELECTRIC SHIELD



**FLUX 4.1 SNOWMOBILE HELMETS**  
come fitted with your choice of  
Anti-Fog Double Lens Outer Shield OR Electric Shield.  
ALSO INCLUDES:  
**Snow Breath Guard**

## FLUX 4.1 MODULAR HELMET



ANTI-FOG SUN SHIELD

1-BUTTON OPERATION

4x EXHAUST

3x INTAKE



BACK

TOP

- helmets
- eyewear
- headgear
- jackets
- t-shirts & sweatshirts
- bibs & pants
- gloves
- boots
- protection

COLOR	XS	S	M	L	XL	2X
<b>FLUX 4.1 SINGLE LENS (STREET)</b>						
<b>COMMANDER GRAPHICS</b>						
MATTE WHITE	9120101	9120102	9120103	9120104	9120105	9120106
GREEN	9120301	9120302	9120303	9120304	9120305	9120306
YELLOW	9120401	9120402	9120403	9120404	9120405	9120406
ORANGE	9120501	9120502	9120503	9120504	9120505	9120506
RED	9120601	9120602	9120603	9120604	9120605	9120606
BLUE	9120701	9120702	9120703	9120704	9120705	9120706
SILVER	9120801	9120802	9120803	9120804	9120805	9120806
PINK	9120901	9120902	9120903	9120904	9120905	9120906
<b>FLUX 4.1 DOUBLE LENS (SNOW)</b>						
<b>COMMANDER GRAPHICS</b>						
MATTE WHITE	9220101	9220102	9220103	9220104	9220105	9220106
GREEN	9220301	9220302	9220303	9220304	9220305	9220306
YELLOW	9220401	9220402	9220403	9220404	9220405	9220406
ORANGE	9220501	9220502	9220503	9220504	9220505	9220506
RED	9220601	9220602	9220603	9220604	9220605	9220606
BLUE	9220701	9220702	9220703	9220704	9220705	9220706
SILVER	9220801	9220802	9220803	9220804	9220805	9220806
PINK	9220901	9220902	9220903	9220904	9220905	9220906
<b>FLUX 4.1 ELECTRIC SHIELD (SNOW)</b>						
<b>COMMANDER GRAPHICS</b>						
MATTE WHITE	9320101	9320102	9320103	9320104	9320105	9320106
GREEN	9320301	9320302	9320303	9320304	9320305	9320306
YELLOW	9320401	9320402	9320403	9320404	9320405	9320406
ORANGE	9320501	9320502	9320503	9320504	9320505	9320506
RED	9320601	9320602	9320603	9320604	9320605	9320606
BLUE	9320701	9320702	9320703	9320704	9320705	9320706
SILVER	9320801	9320802	9320803	9320804	9320805	9320806
PINK	9320901	9320902	9320903	9320904	9320905	9320906

SEE PAGES 2 & 3 FOR FITMENT INFORMATION

# HELMETS

helmets

eyewear

headgear

jackets

t-shirts & sweatshirts

bibs & pants

gloves

boots

protection

## OPTIMUS MODULAR HELMET



## ECLIPSE GRAPHICS

(Featuring NEW Snap Breath Guard)



RED

## FEATURES

Comes Standard With A Single Lens Shield (Street)

- Two-piece modular helmet
- Two section injection HPTT shell - high pressure thermoplastic alloy
- Two EPS interiors (XS-M) (L-2X)
- Interior material is designed for dry comfort with hypo-allergenic treatment
- Easy one-button hand release to open modular helmet
- Removable, machine-washable interior secured by snaps
- Removable chin curtain
- Removable outer shield - No Tools Required
- **Ventilation INTAKE:** Jaw & forehead
- **Ventilation EXHAUST:** Top
- Provides maximum ventilation and ultimate comfort.
- **Fabric helmet bag included**



WHITE



BLUE



GREEN



ORANGE



MATTE SILVER



YELLOW



PINK



Choose from:  
SINGLE LENS  
DOUBLE LENS  
ELECTRIC SHIELD



**OPTIMUS SNOWMOBILE HELMETS**  
come fitted with your choice of  
Anti-Fog Double Lens Outer Shield OR Electric Shield.  
ALSO INCLUDES:  
**Snow Breath Guard**

## OPTIMUS MODULAR HELMET



1-BUTTON OPERATION

INTAKE VENTS

EXHAUST VENT



FRONT



BACK



OPTIMUS "ECLIPSE" GRAPHICS ACCEPT A NEW "SNAP" (VS VELCRO) BREATH GUARD

ALSO AVAILABLE IN BLACK & MATTE BLACK (P. 20/21)

ACTUAL BREATH GUARD MAY VARY

**OPTIMUS SINGLE LENS (STREET)**

COLOR	XS	S	M	L	XL	2X	3X
<b>ECLIPSE GRAPHICS</b>							
RED	9160601	9160602	9160603	9160604	9160605	9160606	9160607
WHITE	9160101	9160102	9160103	9160104	9160105	9160106	9160107
BLUE	9160701	9160702	9160703	9160704	9160705	9160706	9160707
GREEN	9160301	9160302	9160303	9160304	9160305	9160306	9160307
ORANGE	9160501	9160502	9160503	9160504	9160505	9160506	9160507
SILVER	9160801	9160802	9160803	9160804	9160805	9160806	9160807
YELLOW	9160401	9160402	9160403	9160404	9160405	9160406	9160407
PINK	9160901	9160902	9160903	9160904	9160905	9160906	9160907

**OPTIMUS DOUBLE LENS (SNOW)**

COLOR	XS	S	M	L	XL	2X	3X
<b>ECLIPSE GRAPHICS</b>							
RED	9260601	9260602	9260603	9260604	9260605	9260606	9260607
WHITE	9260101	9260102	9260103	9260104	9260105	9260106	9260107
BLUE	9260701	9260702	9260703	9260704	9260705	9260706	9260707
GREEN	9260301	9260302	9260303	9260304	9260305	9260306	9260307
ORANGE	9260501	9260502	9260503	9260504	9260505	9260506	9260507
SILVER	9260801	9260802	9260803	9260804	9260805	9260806	9260807
YELLOW	9260401	9260402	9260403	9260404	9260405	9260406	9260407
PINK	9260901	9260902	9260903	9260904	9260905	9260906	9260907

**OPTIMUS ELECTRIC SHIELD (SNOW)**

COLOR	XS	S	M	L	XL	2X	3X
<b>ECLIPSE GRAPHICS</b>							
RED	9360601	9360602	9360603	9360604	9360605	9360606	9360607
WHITE	9360101	9360102	9360103	9360104	9360105	9360106	9360107
BLUE	9360701	9360702	9360703	9360704	9360705	9360706	9360707
GREEN	9360301	9360302	9360303	9360304	9360305	9360306	9360307
ORANGE	9360501	9360502	9360503	9360504	9360505	9360506	9360507
SILVER	9360801	9360802	9360803	9360804	9360805	9360806	9360807
YELLOW	9360401	9360402	9360403	9360404	9360405	9360406	9360407
PINK	9360901	9360902	9360903	9360904	9360905	9360906	9360907

SEE PAGES 2 & 3 FOR FITMENT INFORMATION

- helmets
- eyewear
- headgear
- jackets
- t-shirts & sweatshirts
- bibs & pants
- gloves
- boots
- protection

# HELMETS

- helmets
- eyewear
- headgear
- jackets
- t-shirts & sweatshirts
- bibs & pants
- gloves
- boots
- protection

## OPTIMUS MODULAR HELMET



### SOLID COLORS



BLACK

### FEATURES

Comes Standard With A Single Lens Shield (Street)

- Two-piece modular helmet
- Two section injection HPTT shell - high pressure thermoplastic alloy
- Two EPS interiors (XS-M) (L-2X)
- Interior material is designed for dry comfort with hypo-allergenic treatment
- Easy one-button hand release to open modular helmet
- Removable, machine-washable interior secured by snaps
- Removable chin curtain
- Removable outer shield - No Tools Required
- **Ventilation INTAKE:** Jaw & forehead
- **Ventilation EXHAUST:** Top
- Provides maximum ventilation and ultimate comfort.
- **Fabric helmet bag included**



MATTE BLACK



SILVER



WHITE

Choose from:  
SINGLE LENS  
DOUBLE LENS  
ELECTRIC SHIELD



**OPTIMUS SNOWMOBILE HELMETS**  
come fitted with your choice of  
Anti-Fog Double Lens Outer Shield OR Electric Shield.  
ALSO INCLUDES:  
**Snow Breath Guard**



- helmets
- eyewear
- headgear
- jackets
- t-shirts & sweatshirts
- bibs & pants
- gloves
- boots
- protection

**\* ACCEPTS (OR INCLUDES) "SNAP" BREATH GUARD VS "VELCRO" (SEE PAGE 19)**

COLOR	XS	S	M	L	XL	2X	3X
<b>OPTIMUS SINGLE LENS (STREET)</b>							
<b>SOLID COLORS</b>							
BLACK	9121201	9121202	9121203	9121204	9121205	9121206	9121207
BLACK*	9160201	9160202	9160203	9160204	9160205	9160206	9160207
MATTE BLACK	9121211	9121212	9121213	9121214	9121215	9121216	9121217
MATTE BLACK*	9161201	9161202	9161203	9161204	9161205	9161206	9161207
SILVER	9121811	9121812	9121813	9121814	9121815	9121816	9121817
WHITE	9121111	9121112	9121113	9121114	9121115	9121116	9121117

<b>OPTIMUS DOUBLE LENS (SNOW)</b>							
<b>SOLID COLORS</b>							
BLACK	9221201	9221202	9221203	9221204	9221205	9221206	9221207
BLACK*	9260201	9260202	9260203	9260204	9260205	9260206	9260207
MATTE BLACK	9221211	9221212	9221213	9221214	9221215	9221216	9221217
MATTE BLACK*	9261201	9261202	9261203	9261204	9261205	9261206	9261207
SILVER	9221811	9221812	9221813	9221814	9221815	9221816	9221817
WHITE	9221111	9221112	9221113	9221114	9221115	9221116	9221117

<b>OPTIMUS ELECTRIC SHIELD (SNOW)</b>							
<b>SOLID COLORS</b>							
BLACK	9321201	9321202	9321203	9321204	9321205	9321206	9321207
BLACK*	9360201	9360202	9360203	9360204	9360205	9360206	9360207
MATTE BLACK	9321211	9321212	9321213	9321214	9321215	9321216	9321217
MATTE BLACK*	9361201	9361202	9361203	9361204	9361205	9361206	9361207
SILVER	9321811	9321812	9321813	9321814	9321815	9321816	9321817
WHITE	9321111	9321112	9321113	9321114	9321115	9321116	9321117

**SEE PAGES 2 & 3 FOR FITMENT INFORMATION**

# HELMETS

- helmets
- eyewear
- headgear
- jackets
- t-shirts & sweatshirts
- bibs & pants
- gloves
- boots
- protection

## OPTIMUS MODULAR HELMET



### RACELINE GRAPHICS (Matte Finish Only)



WHITE

### FEATURES

Comes Standard With A Single Lens Shield (Street)

- Two-piece modular helmet
- Two section injection HPTT shell - high pressure thermoplastic alloy
- Two EPS interiors (XS-M) (L-2X)
- Interior material is designed for dry comfort with hypo-allergenic treatment
- Easy one-button hand release to open modular helmet
- Removable, machine-washable interior secured by snaps
- Removable chin curtain
- Removable outer shield - No Tools Required
- **Ventilation INTAKE:** Jaw & forehead
- **Ventilation EXHAUST:** Top
- Provides maximum ventilation and ultimate comfort.
- **Fabric helmet bag included**



GREEN



YELLOW



ORANGE



RED



BLUE



SILVER



PINK



Choose from:  
 SINGLE LENS  
 DOUBLE LENS  
 ELECTRIC SHIELD



**OPTIMUS SNOWMOBILE HELMETS**  
 come fitted with your choice of  
 Anti-Fog Double Lens Outer Shield OR Electric Shield.  
 ALSO INCLUDES:  
 Snow Breath Guard



## OPTIMUS MODULAR HELMET



1-BUTTON OPERATION

EXHAUST VENT

INTAKE VENTS



BACK



FRONT

- helmets
- eyewear
- headgear
- jackets
- t-shirts & sweatshirts
- bibs & pants
- gloves
- boots
- protection

COLOR	XS	S	M	L	XL	2X	3X
<b>OPTIMUS SINGLE LENS (STREET)</b>							
<b>RACELINE GRAPHICS (MATTE BLACK)</b>							
WHITE	9121101	9121102	9121103	9121104	9121105	9121106	9121107
GREEN	9121301	9121302	9121303	9121304	9121305	9121306	9121307
YELLOW	9121401	9121402	9121403	9121404	9121405	9121406	9121407
ORANGE	9121501	9121502	9121503	9121504	9121505	9121506	9121507
RED	9121601	9121602	9121603	9121604	9121605	9121606	9121607
BLUE	9121701	9121702	9121703	9121704	9121705	9121706	9121707
SILVER	9121801	9121802	9121803	9121804	9121805	9121806	9121807
PINK	9121901	9121902	9121903	9121904	9121905	9121906	9121907

### OPTIMUS DOUBLE LENS (SNOW)

<b>RACELINE GRAPHICS (MATTE BLACK)</b>							
WHITE	9221101	9221102	9221103	9221104	9221105	9221106	9221107
GREEN	9221301	9221302	9221303	9221304	9221305	9221306	9221307
YELLOW	9221401	9221402	9221403	9221404	9221405	9221406	9221407
ORANGE	9221501	9221502	9221503	9221504	9221505	9221506	9221507
RED	9221601	9221602	9221603	9221604	9221605	9221606	9221607
BLUE	9221701	9221702	9221703	9221704	9221705	9221706	9221707
SILVER	9221801	9221802	9221803	9221804	9221805	9221806	9221807
PINK	9221901	9221902	9221903	9221904	9221905	9221906	9221907

### OPTIMUS ELECTRIC SHIELD (SNOW)

<b>RACELINE GRAPHICS (MATTE BLACK)</b>							
WHITE	9321101	9321102	9321103	9321104	9321105	9321106	9321107
GREEN	9321301	9321302	9321303	9321304	9321305	9321306	9321307
YELLOW	9321401	9321402	9321403	9321404	9321405	9321406	9321407
ORANGE	9321501	9321502	9321503	9321504	9321505	9321506	9321507
RED	9321601	9321602	9321603	9321604	9321605	9321606	9321607
BLUE	9321701	9321702	9321703	9321704	9321705	9321706	9321707
SILVER	9321801	9321802	9321803	9321804	9321805	9321806	9321807
PINK	9321901	9321902	9321903	9321904	9321905	9321906	9321907

**SEE PAGES 2 & 3 FOR FITMENT INFORMATION**

# HELMETS

- helmets
- eyewear
- headgear
- jackets
- t-shirts & sweatshirts
- bibs & pants
- gloves
- boots
- protection

## THUNDER (ADULT) FULL-FACE HELMET



### ELECTRA GRAPHICS



MATTE WHITE

### FEATURES

Comes Standard With A Single Lens Shield (Street)

- Injected thermal plastic resin shell
  - GE LEXAN scratch-resistant optical shield
  - Dual layer EPS
  - Recessed ear pockets, with ready-to-use pouches for communication devices
  - Removable, hypo-allergenic washable lining
  - Includes Street breath guard & chin curtain
  - **Ventilation INTAKE:** Jaw & Forehead
  - **Ventilation EXHAUST:** Top(2) & Bottom(2)
- Provides superior airflow
- **Fabric helmet bag included**



GREEN



YELLOW



ORANGE



RED



BLUE



SILVER



PINK



Choose from:  
SINGLE LENS  
DOUBLE LENS  
ELECTRIC SHIELD



**THUNDER SNOWMOBILE HELMETS**  
come fitted with your choice of  
Anti-Fog Double Lens Outer Shield OR Electric Shield.  
ALSO INCLUDES:  
**Snow Breath Guard**

## THUNDER (ADULT) FULL-FACE HELMET



INTAKE VENTS



EXHAUST VENTS

BACK

COLOR	XS	S	M	L	XL	2X	3X
<b>THUNDER SINGLE LENS (STREET)</b>							
ELECTRA GRAPHICS							
MATTE WHITE	9123101	9123102	9123103	9123104	9123105	9123106	9123107
GREEN	9123301	9123302	9123303	9123304	9123305	9123306	9123307
YELLOW	9123401	9123402	9123403	9123404	9123405	9123406	9123407
ORANGE	9123501	9123502	9123503	9123504	9123505	9123506	9123507
RED	9123601	9123602	9123603	9123604	9123605	9123606	9123607
BLUE	9123701	9123702	9123703	9123704	9123705	9123706	9123707
SILVER	9123801	9123802	9123803	9123804	9123805	9123806	9123807
PINK	9123901	9123902	9123903	9123904	9123905	9123906	9123907
<b>THUNDER DOUBLE LENS (SNOW)</b>							
ELECTRA GRAPHICS							
MATTE WHITE	9223101	9223102	9223103	9223104	9223105	9223106	9223107
GREEN	9223301	9223302	9223303	9223304	9223305	9223306	9223307
YELLOW	9223401	9223402	9223403	9223404	9223405	9223406	9223407
ORANGE	9223501	9223502	9223503	9223504	9223505	9223506	9223507
RED	9223601	9223602	9223603	9223604	9223605	9223606	9223607
BLUE	9223701	9223702	9223703	9223704	9223705	9223706	9223707
SILVER	9223801	9223802	9223803	9223804	9223805	9223806	9223807
PINK	9223901	9223902	9223903	9223904	9223905	9223906	9223907
<b>THUNDER ELECTRIC SHIELD (SNOW)</b>							
ELECTRA GRAPHICS							
MATTE WHITE	9323101	9323102	9323103	9323104	9323105	9323106	9323107
GREEN	9323301	9323302	9323303	9323304	9323305	9323306	9323307
YELLOW	9323401	9323402	9323403	9323404	9323405	9323406	9323407
ORANGE	9323501	9323502	9323503	9323504	9323505	9323506	9323507
RED	9323601	9323602	9323603	9323604	9323605	9323606	9323607
BLUE	9323701	9323702	9323703	9323704	9323705	9323706	9323707
SILVER	9323801	9323802	9323803	9323804	9323805	9323806	9323807
PINK	9323901	9323902	9323903	9323904	9323905	9323906	9323907

SEE PAGES 2 & 3 FOR FITMENT INFORMATION

helmets

eyewear

headgear

jackets

t-shirts & sweatshirts

bibs & pants

gloves

boots

protection

# HELMETS

- helmets
- eyewear
- headgear
- jackets
- t-shirts & sweatshirts
- bibs & pants
- gloves
- boots
- protection

## THUNDER (ADULT) FULL-FACE HELMET



### SOLID COLORS



BLACK

### FEATURES

Comes Standard With A Single Lens Shield (Street)

- Injected thermal plastic resin shell
- GE LEXAN scratch-resistant optical shield
- Dual layer EPS
- Recessed ear pockets, with ready-to-use pouches for communication devices
- Removable, hypo-allergenic washable lining
- Includes Street breath guard & chin curtain
- **Ventilation INTAKE:** Jaw & Forehead
- **Ventilation EXHAUST:** Top(2) & Bottom(2)  
Provides superior airflow
- **Fabric helmet bag included**



MATTE BLACK



SILVER



WHITE

Choose from:  
SINGLE LENS  
DOUBLE LENS  
ELECTRIC SHIELD



**THUNDER SNOWMOBILE HELMETS**  
come fitted with your choice of  
Anti-Fog Double Lens Outer Shield OR Electric Shield.  
ALSO INCLUDES:  
**Snow Breath Guard**

## THUNDER (ADULT) FULL-FACE HELMET



**Need a Replacement  
Shield or Liner?**  
pages 56 & 57

INTAKE VENTS

EXHAUST VENTS



BACK



FRONT

**Not sure  
about Sizing?**  
Check out page 3

- helmets
- eyewear
- headgear
- jackets
- t-shirts & sweatshirts
- bibs & pants
- gloves
- boots
- protection

**THUNDER SINGLE LENS (STREET)**

COLOR	XS	S	M	L	XL	2X	3X
SOLID COLORS							
BLACK	9123201	9123202	9123203	9123204	9123205	9123206	9123207
MATTE BLACK	9123211	9123212	9123213	9123214	9123215	9123216	9123217
SILVER	9123811	9123812	9123813	9123814	9123815	9123816	9123817
WHITE	9123111	9123112	9123113	9123114	9123115	9123116	9123117

**THUNDER DOUBLE LENS (SNOW)**

COLOR	XS	S	M	L	XL	2X	3X
SOLID COLORS							
BLACK	9223201	9223202	9223203	9223204	9223205	9223206	9223207
MATTE BLACK	9223211	9223212	9223213	9223214	9223215	9223216	9223217
SILVER	9223811	9223812	9223813	9223814	9223815	9223816	9223817
WHITE	9223111	9223112	9223113	9223114	9223115	9223116	9223117

**THUNDER ELECTRIC SHIELD (SNOW)**

COLOR	XS	S	M	L	XL	2X	3X
SOLID COLORS							
BLACK	9323201	9323202	9323203	9323204	9323205	9323206 154.95	9323207
MATTE BLACK	9323211	9323212	9323213	9323214	9323215	9323216 154.95	9323217
SILVER	9323811	9323812	9323813	9323814	9323815	9323816 154.95	9323817
WHITE	9323111	9323112	9323113	9323114	9323115	9323116 154.95	9323117

**SEE PAGES 2 & 3 FOR FITMENT INFORMATION**

# HELMETS

- helmets
- eyewear
- headgear
- jackets
- t-shirts & sweatshirts
- bibs & pants
- gloves
- boots
- protection

## THUNDER (YOUTH) FULL-FACE HELMET



### ELECTRA GRAPHICS (Youth Sizes)



MATTE WHITE

### FEATURES

Comes Standard With A Single Lens Shield (Street)

- Injected thermal plastic resin shell
- GE LEXAN scratch-resistant optical shield
- Dual layer EPS
- Recessed ear pockets, with ready-to-use pouches for communication devices
- Removable, hypo-allergenic washable lining
- Includes Street breath guard & chin curtain
- **Ventilation INTAKE:** Jaw & Forehead
- **Ventilation EXHAUST:** Top(2) & Bottom(2)
- Provides superior airflow
- **Fabric helmet bag included**



GREEN



YELLOW



ORANGE



RED



BLUE



SILVER



PINK



Choose from:  
SINGLE LENS  
DOUBLE LENS  
ELECTRIC SHIELD



**THUNDER SNOWMOBILE HELMETS**  
come fitted with your choice of  
Anti-Fog Double Lens Outer Shield OR Electric Shield.  
ALSO INCLUDES:  
**Snow Breath Guard**

**THUNDER (YOUTH)  
FULL-FACE HELMET**



**Need a Replacement  
Shield or Liner?**

**pages 56 & 57**

INTAKE VENTS

EXHAUST VENTS



BACK



**YOUTH SIZE CHART**

SIZE	CIRCUMFERENCE (CM)	CIRCUMFERENCE (IN)
S	49-50	19.15" - 19.50"
M	51-52	20.10" - 20.45"
L	53-54	20.87" - 21.26"

COLOR	S	M	L
<b>THUNDER (YOUTH) SINGLE LENS (STREET)</b>			
ELECTRA GRAPHICS			
MATTE WHITE	9125101	9125102	9125103
GREEN	9125301	9125302	9125303
YELLOW	9125401	9125402	9125403
ORANGE	9125501	9125502	9125503
RED	9125601	9125602	9125603
BLUE	9125701	9125702	9125703
SILVER	9125801	9125802	9125803
PINK	9125901	9125902	9125903
<b>THUNDER (YOUTH) DOUBLE LENS (SNOW)</b>			
ELECTRA GRAPHICS			
MATTE WHITE	9225101	9225102	9225103
GREEN	9225301	9225302	9225303
YELLOW	9225401	9225402	9225403
ORANGE	9225501	9225502	9225503
RED	9225601	9225602	9225603
BLUE	9225701	9225702	9225703
SILVER	9225801	9225802	9225803
PINK	9225901	9225902	9225903
<b>THUNDER (YOUTH) ELECTRIC SHIELD (SNOW)</b>			
ELECTRA GRAPHICS			
MATTE WHITE	9325101	9325102	9325103
GREEN	9325301	9325302	9325303
YELLOW	9325401	9325402	9325403
ORANGE	9325501	9325502	9325503
RED	9325601	9325602	9325603
BLUE	9325701	9325702	9325703
SILVER	9325801	9325802	9325803
PINK	9325901	9325902	9325903

- helmets
- eyewear
- headgear
- jackets
- t-shirts & sweatshirts
- bibs & pants
- gloves
- boots
- protection

# HELMETS

- helmets
- eyewear
- headgear
- jackets
- t-shirts & sweatshirts
- bibs & pants
- gloves
- boots
- protection

## THUNDER (YOUTH) FULL-FACE HELMET



### SOLID COLORS (Youth Sizes)



GLOSS BLACK

### FEATURES

Comes Standard With A Single Lens Shield (Street)

- Injected thermal plastic resin shell
- GE LEXAN scratch-resistant optical shield
- Dual layer EPS
- Recessed ear pockets, with ready-to-use pouches for communication devices
- Removable, hypo-allergenic washable lining
- Includes Street breath guard & chin curtain
- **Ventilation INTAKE:** Jaw & Forehead
- **Ventilation EXHAUST:** Top(2) & Bottom(2)  
Provides superior airflow
- **Fabric helmet bag included**



MATTE BLACK



SILVER



WHITE

Choose from:  
SINGLE LENS  
DOUBLE LENS  
ELECTRIC SHIELD



**THUNDER-SNOWMOBILE HELMETS**  
come fitted with your choice of  
Anti-Fog Double Lens Outer Shield OR Electric Shield.  
ALSO INCLUDES:  
**Snow Breath Guard**



**Need a Replacement  
Shield or Liner?**

**pages 56 & 57**

**THUNDER (YOUTH)  
FULL-FACE HELMET**



INTAKE VENTS



FRONT

EXHAUST VENTS



BACK

- helmets
- eyewear
- headgear
- jackets
- t-shirts & sweatshirts
- bibs & pants
- gloves
- boots
- protection



**YOUTH SIZE CHART**

SIZE	CIRCUMFERENCE (CM)	CIRCUMFERENCE (IN)
S	49-50	19.15" - 19.50"
M	51-52	20.10" - 20.45"
L	53-54	20.87" - 21.26"

COLOR	S	M	L
<b>THUNDER (YOUTH) SINGLE LENS (STREET)</b>			
SOLID COLORS			
GLOSS BLACK	9125201	9125202	9125203
MATTE BLACK	9125211	9125212	9125213
SILVER	9125811	9125812	9125813
WHITE	9125111	9125112	9125113
<b>THUNDER (YOUTH) DOUBLE LENS (SNOW)</b>			
SOLID COLORS			
GLOSS BLACK	9225201	9225202	9225203
MATTE BLACK	9225211	9225212	9225213
SILVER	9225811	9225812	9225813
WHITE	9225111	9225112	9225113
<b>THUNDER (YOUTH) ELECTRIC SHIELD (SNOW)</b>			
SOLID COLORS			
GLOSS BLACK	9325201	9325202	9325203
MATTE BLACK	9325211	9325212	9325213
SILVER	9325811	9325812	9325813
WHITE	9325111	9325112	9325113

- helmets
- eyewear
- headgear
- jackets
- t-shirts & sweatshirts
- bibs & pants
- gloves
- boots
- protection



## SOLID COLORS (Available in Big Sizes Only)



GLOSS BLACK

## FEATURES

Comes Standard With A Single Lens Shield (Street)

- GE Lexan scratch resistant optical shield
- UV clear coat finish
- Single hand, push button release to raise jaw section
- Quick-release chin strap
- Double D-ring chinstrap
- Recessed ear pockets with ready-to-use pouches for communication devices
- Removable, washable hypo-allergenic lining
- **Ventilation INTAKE:** Jaw & forehead(2)
- **Ventilation EXHAUST:** Top(2)  
Provides maximum airflow
- **Fabric helmet bag included**



MATTE BLACK



MATTE SILVER



**Choose from:**  
 SINGLE LENS  
 DOUBLE LENS  
 ELECTRIC SHIELD



**GOLIATH SNOWMOBILE HELMETS**  
 come fitted with your choice of  
 Anti-Fog Double Lens Outer Shield OR Electric Shield.  
 Also Included: Snow Chin Curtain & Snow Breath Guard

**Need a Replacement  
Shield or Liner?**

**pages 56 & 57**

**GOLIATH  
MODULAR HELMET**



COLOR	2X	3X	4X
<b>GOLIATH SINGLE LENS (STREET)</b>			
SOLID COLORS			
BLACK	9122206	9122207	9122208
MATTE BLACK	9122216	9122217	9122218
MATTE SILVER	9122806	9122807	9122808
<b>GOLIATH DOUBLE LENS (SNOW)</b>			
SOLID COLORS			
BLACK	9222206	9222207	9222208
MATTE BLACK	9222216	9222217	9222218
MATTE SILVER	9222806	9222807	9222808
<b>GOLIATH ELECTRIC SHIELD (SNOW)</b>			
SOLID COLORS			
BLACK	9322206	9322207	9322208
MATTE BLACK	9322216	9322217	9322218
MATTE SILVER	9322806	9322807	9322808

**SEE PAGES 2 & 3 FOR FITMENT INFORMATION**

- helmets
- eyewear
- headgear
- jackets
- t-shirts & sweatshirts
- bibs & pants
- gloves
- boots
- protection

# HELMETS

- helmets
- eyewear
- headgear
- jackets
- t-shirts & sweatshirts
- bibs & pants
- gloves
- boots
- protection

## BLADE SV FULL-FACE HELMET



### SOLID COLORS



BLACK

### FEATURES

Comes Standard With A Single Lens Shield (Street)

- Injected thermoplastic alloy shell
- Two shells XS-3X
- Dual layer EPS
- Quick Release Retention System
- GE LEXAN scratch resistant optical shield
- Scratch resistant smoke-tint inner sun shield with anti-fog coating
- Audio system pocket with snaps to secure in place
- Removable/Breathable hypo-allergenic washable interior
- **Includes:** Street Breath Guard & Chin Curtain
- **Ventilation INTAKE:** Jaw & Forehead(2)
- **Ventilation EXHAUST:** Top(2)  
Provides maximum ventilation and ultimate comfort
- **Fabric helmet bag included**



MATTE BLACK

SILVER

WHITE



Choose from:  
SINGLE LENS  
DOUBLE LENS  
ELECTRIC SHIELD



**BLADE SV SNOWMOBILE HELMETS**  
come fitted with your choice of  
Anti-Fog Double Lens Outer Shield OR Electric Shield.  
ALSO INCLUDES:  
Snow Breath Guard

**Need a Replacement  
Shield or Liner?**  
pages **56&57**

## BLADE SV FULL-FACE HELMET



INTAKE VENTS



FRONT

EXHAUST VENTS



BACK

- helmets
- eyewear
- headgear
- jackets
- t-shirts & sweatshirts
- bibs & pants
- gloves
- boots
- protection

COLOR	XS	S	M	L	XL	2X	3X
<b>BLADE SV SINGLE LENS (STREET)</b>							
SOLID COLORS							
BLACK	9126201	9126202	9126203	9126204	9126205	9126206	9126207
MATTE BLACK	9126211	9126212	9126213	9126214	9126215	9126216	9126217
SILVER	9126811	9126812	9126813	9126814	9126815	9126816	9126817
WHITE	9126111	9126112	9126113	9126114	9126115	9126116	9126117
<b>BLADE SV DOUBLE LENS (SNOW)</b>							
SOLID COLORS							
BLACK	9226201	9226202	9226203	9226204	9226205	9226206	9226207
MATTE BLACK	9226211	9226212	9226213	9226214	9226215	9226216	9226217
SILVER	9226811	9226812	9226813	9226814	9226815	9226816	9226817
WHITE	9226111	9226112	9226113	9226114	9226115	9226116	9226117
<b>BLADE SV ELECTRIC SHIELD (SNOW)</b>							
SOLID COLORS							
BLACK	9326201	9326202	9326203	9326204	9326205	9326206	9326207
MATTE BLACK	9326211	9326212	9326213	9326214	9326215	9326216	9326217
SILVER	9326811	9326812	9326813	9326814	9326815	9326816	9326817
WHITE	9326111	9326112	9326113	9326114	9326115	9326116	9326117

SEE PAGES 2 & 3 FOR FITMENT INFORMATION

# HELMETS

- helmets
- eyewear
- headgear
- jackets
- t-shirts & sweatshirts
- bibs & pants
- gloves
- boots
- protection



## REBORN GRAPHICS



MATTE WHITE

## FEATURES

Comes Standard With A Single Lens Shield (Street)

- Injected thermoplastic alloy shell
- Two shells XS-3X
- Dual layer EPS
- Quick Release Retention System
- GE LEXAN scratch resistant optical shield
- Scratch resistant smoke-tint inner sun shield with anti-fog coating
- Audio system pocket with snaps to secure in place
- Removable/Breathable hypo-allergenic washable interior
- **Includes:** Street Breath Guard & Chin Curtain
- **Ventilation INTAKE:** Jaw & Forehead(2)
- **Ventilation EXHAUST:** Top(2)  
Provides maximum ventilation and ultimate comfort
- **Fabric helmet bag included**



**Choose from:**  
 SINGLE LENS  
 DOUBLE LENS  
 ELECTRIC SHIELD



**BLADE SV SNOWMOBILE HELMETS**  
 come fitted with your choice of  
 Anti-Fog Double Lens Outer Shield OR Electric Shield.  
 ALSO INCLUDES:  
 Snow Breath Guard

ALSO AVAILABLE:



JOKER - RED

## BLADE SV FULL-FACE HELMET



EXHAUST VENTS

INTAKE VENTS



BACK



TOP

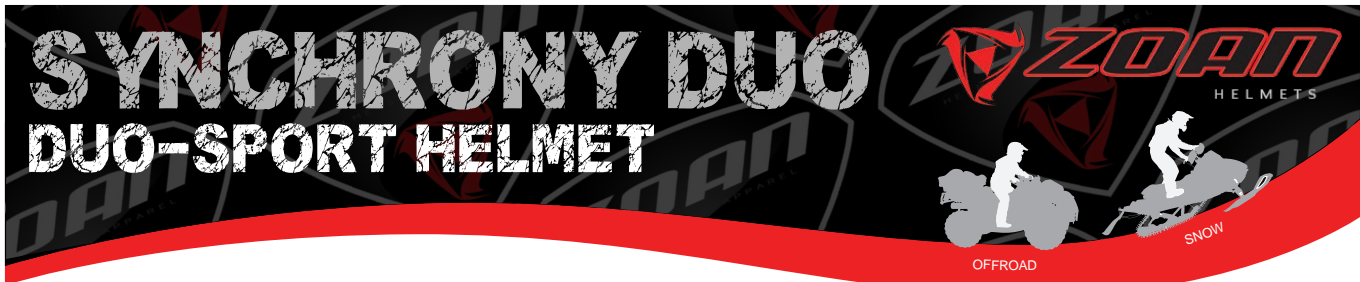
COLOR	XS	S	M	L	XL	2X	3X
<b>BLADE SV SINGLE LENS (STREET)</b>							
REBORN GRAPHICS							
MATTE WHITE	9126101	9126102	9126103	9126104	9126105	9126106	9126107
GREEN	9126301	9126302	9126303	9126304	9126305	9126306	9126307
YELLOW	9126401	9126402	9126403	9126404	9126405	9126406	9126407
ORANGE	9126501	9126502	9126503	9126504	9126505	9126506	9126507
RED	9126601	9126602	9126603	9126604	9126605	9126606	9126607
BLUE	9126701	9126702	9126703	9126704	9126705	9126706	9126707
SILVER	9126801	9126802	9126803	9126804	9126805	9126806	9126807
PINK	9126901	9126902	9126903	9126904	9126905	9126906	9126907
JOKER GRAPHICS							
RED	9127301	9127302	9127303	9127304	9127305	9127306	9127307
<b>BLADE SV DOUBLE LENS (SNOW)</b>							
REBORN GRAPHICS							
MATTE WHITE	9226101	9226102	9226103	9226104	9226105	9226106	9226107
GREEN	9226301	9226302	9226303	9226304	9226305	9226306	9226307
YELLOW	9226401	9226402	9226403	9226404	9226405	9226406	9226407
ORANGE	9226501	9226502	9226503	9226504	9226505	9226506	9226507
RED	9226601	9226602	9226603	9226604	9226605	9226606	9226607
BLUE	9226701	9226702	9226703	9226704	9226705	9226706	9226707
SILVER	9226801	9226802	9226803	9226804	9226805	9226806	9226807
PINK	9226901	9226902	9226903	9226904	9226905	9226906	9226907
JOKER GRAPHICS							
RED	9227301	9227302	9227303	9227304	9227305	9227306	9227307
<b>BLADE SV ELECTRIC SHIELD (SNOW)</b>							
REBORN GRAPHICS							
MATTE WHITE	9326101	9326102	9326103	9326104	9326105	9326106	9326107
GREEN	9326301	9326302	9326303	9326304	9326305	9326306	9326307
YELLOW	9326401	9326402	9326403	9326404	9326405	9326406	9326407
ORANGE	9326501	9326502	9326503	9326504	9326505	9326506	9326507
RED	9326601	9326602	9326603	9326604	9326605	9326606	9326607
BLUE	9326701	9326702	9326703	9326704	9326705	9326706	9326707
SILVER	9326801	9326802	9326803	9326804	9326805	9326806	9326807
PINK	9326901	9326902	9326903	9326904	9326905	9326906	9326907
JOKER GRAPHICS							
RED	9327301	9327302	9327303	9327304	9327305	9327306	9327307

SEE PAGES 2 & 3 FOR FITMENT INFORMATION

- helmets
- eyewear
- headgear
- jackets
- t-shirts & sweatshirts
- bibs & pants
- gloves
- boots
- protection

# HELMETS

- helmets
- eyewear
- headgear
- jackets
- t-shirts & sweatshirts
- bibs & pants
- gloves
- boots
- protection



## TOURER GRAPHICS

(Featuring NEW Snap Breath Guard)



GREEN

## FEATURES

Comes Standard With A Single Lens Shield (Street)

- Lightweight thermoplastic composite construction shell for added strength
- Advanced EPS in head, cheek and front areas
- Scratch resistant smoke-tint color inner sun shield, hard-coated with special anti-fog treatment
- Large, open eye port design for maximum visibility- accommodates many styles of goggles
- Hypo-allergenic textile materials wick away moisture and odor
- Removable cheek pads and comfort liner for easy cleaning and washing
- **Includes:** Snow Breath Guard & Chin Curtain
- Inner shield removable without tools
- **Ventilation:** Combination of fourteen(14) intake and exhaust vents located to enhance airflow and movement
- **Fabric helmet bag included**



ORANGE

YELLOW

SILVER

RED

CAMO GREEN

APPEARS ORANGE  
DUE TO A REFLECTIVE  
COMPONENT IN COLOR

Choose from:  
SINGLE LENS  
DOUBLE LENS  
ELECTRIC SHIELD



**SYNCHRONY DUO-SPORT SNOWMOBILE HELMETS**  
come fitted with your choice of  
Anti-Fog Double Lens Outer Shield OR Electric Shield.



## SYNCHRONY DUO DUO-SPORT HELMET



helmets

eyewear

headgear

jackets

t-shirts & sweatshirts

bibs & pants

gloves

boots

protection



LARGE EYE PORT

**Need a Replacement  
Shield or Liner?**

**pages 56 & 57**



BACK

COMBINATION  
OF 14 INTAKE &  
EXHAUST VENTS



FRONT



ACTUAL BREATH GUARD MAY VARY

SYNCHRONY DUO "TOURER"  
GRAPHICS  
A NEW "SNAP" (VS VELCRO)  
BREATH GUARD

### SYNCHRONY DUO SINGLE LENS (OFFROAD)

COLOR	XS	S	M	L	XL	2X	3X
TOURER GRAPHICS							
GREEN	10301301	10301302	10301303	10301304	10301305	10301306	10301307
ORANGE	10301501	10301502	10301503	10301504	10301505	10301506	10301507
YELLOW	10301401	10301402	10301403	10301404	10301405	10301406	10301407
SILVER	10301801	10301802	10301803	10301804	10301805	10301806	10301807
MATTE SILVER	10302201	10302202	10302203	10302204	10302205	10302206	10302207
RED	10301601	10301602	10301603	10301604	10301605	10301606	10301607
CAMO GREEN	10302301	10302302	10302303	10302304	10302305	10302306	10302307

### SYNCHRONY DUO DOUBLE LENS (SNOW)

COLOR	XS	S	M	L	XL	2X	3X
TOURER GRAPHICS							
GREEN	10321301	10321302	10321303	10321304	10321305	10321306	10321307
ORANGE	10321501	10321502	10321503	10321504	10321505	10321506	10321507
YELLOW	10321401	10321402	10321403	10321404	10321405	10321406	10321407
SILVER	10321801	10321802	10321803	10321804	10321805	10321806	10321807
MATTE SILVER	10322201	10322202	10322203	10322204	10322205	10322206	10322207
RED	10321601	10321602	10321603	10321604	10321605	10321606	10321607
CAMO GREEN	10322301	10322302	10322303	10322304	10322305	10322306	10322307

### SYNCHRONY DUO ELECTRIC SHIELD (SNOW)

COLOR	XS	S	M	L	XL	2X	3X
TOURER GRAPHICS							
GREEN	10331301	10331302	10331303	10331304	10331305	10331306	10331307
ORANGE	10331501	10331502	10331503	10331504	10331505	10331506	10331507
YELLOW	10331401	10331402	10331403	10331404	10331405	10331406	10331407
SILVER	10331801	10331802	10331803	10331804	10331805	10331806	10331807
MATTE SILVER	10332201	10332202	10332203	10332204	10332205	10332206	10332207
RED	10331601	10331602	10331603	10331604	10331605	10331606	10331607
CAMO GREEN	10332301	10332302	10332303	10332304	10332305	10332306	10332307

SEE PAGES 2 & 3 FOR FITMENT INFORMATION

- helmets
- eyewear
- headgear
- jackets
- t-shirts & sweatshirts
- bibs & pants
- gloves
- boots
- protection

## SYNCHRONY DUO DUO-SPORT HELMET



### SOLID COLORS



BLACK

### FEATURES

Comes Standard With A Single Lens Shield (Street)

- Lightweight thermoplastic composite construction shell for added strength
- Advanced EPS in head, cheek and front areas
- Scratch resistant smoke-tint color inner sun shield, hard-coated with special anti-fog treatment
- Large, open eye port design for maximum visibility- accommodates many styles of goggles
- Hypo-allergenic textile materials wick away moisture and odor
- Removable cheek pads and comfort liner for easy cleaning and washing
- **Includes:** Snow Breath Guard & Chin Curtain
- Inner shield removable without tools
- **Ventilation:** Combination of fourteen(14) intake and exhaust vents located to enhance airflow and movement
- **Fabric helmet bag included**



MATTE BLACK

SILVER

WHITE



HI-VIZ ORANGE

HI-VIZ YELLOW

**Choose from:**  
SINGLE LENS  
DOUBLE LENS  
ELECTRIC SHIELD

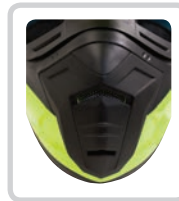


**SYNCHRONY DUO-SPORT SNOWMOBILE HELMETS**  
come fitted with your choice of  
Anti-Fog Double Lens Outer Shield OR Electric Shield.

## SYNCHRONY DUO DUO-SPORT HELMET



TOP



COMBINATION OF 14 INTAKE & EXHAUST VENTS



BACK



helmets

eyewear

headgear

jackets

t-shirts & sweatshirts

bibs & pants

gloves

boots

protection

COLOR	XS	S	M	L	XL	2X	3X
<b>SYNCHRONY DUO SINGLE LENS (OFFROAD)</b>							
<b>SOLID COLORS</b>							
BLACK	9128201	9128202	9128203	9128204	9128205	9128206	9128207
MATTE BLACK	9128211	9128212	9128213	9128214	9128215	9128216	9128217
SILVER	9128811	9128812	9128813	9128814	9128815	9128816	9128817
WHITE	9128111	9128112	9128113	9128114	9128115	9128116	9128117
HI-VIZ ORANGE	9128511	9128512	9128513	9128514	9128515	9128516	9128517
HI-VIZ YELLOW	9128411	9128412	9128413	9128414	9128415	9128416	9128417
<b>SYNCHRONY DUO DOUBLE LENS (SNOW)</b>							
<b>SOLID COLORS</b>							
BLACK	9228201	9228202	9228203	9228204	9228205	9228206	9228207
MATTE BLACK	9228211	9228212	9228213	9228214	9228215	9228216	9228217
SILVER	9228811	9228812	9228813	9228814	9228815	9228816	9228817
WHITE	9228111	9228112	9228113	9228114	9228115	9228116	9228117
HI-VIZ ORANGE	9228511	9228512	9228513	9228514	9228515	9228516	9228517
HI-VIZ YELLOW	9228411	9228412	9228413	9228414	9228415	9228416	9228417
<b>SYNCHRONY DUO ELECTRIC SHIELD (SNOW)</b>							
<b>SOLID COLORS</b>							
BLACK	9328201	9328202	9328203	9328204	9328205	9328206	9328207
MATTE BLACK	9328211	9328212	9328213	9328214	9328215	9328216	9328217
SILVER	9328811	9328812	9328813	9328814	9328815	9328816	9328817
WHITE	9328111	9328112	9328113	9328114	9328115	9328116	9328117
HI-VIZ ORANGE	9328511	9328512	9328513	9328514	9328515	9328516	9328517
HI-VIZ YELLOW	9328411	9328412	9328413	9328414	9328415	9328416	9328417

SEE PAGES 2 & 3 FOR FITMENT INFORMATION

# HELMETS

helmets
eyewear
headgear
jackets
t-shirts & sweatshirts
bibs & pants
gloves
boots
protection



## RACE EQUIPE GRAPHICS



MATTE SILVER

## FEATURES

- Lightweight thermoplastic composite construction shell for added strength
- Advanced EPS in head, cheeks, and frontal areas
- High quality textile material wicks away moisture and odors
- Modern design, large size eye port for maximum visibility- accommodates many styles of goggles
- Removable cheek pads and comfort liner for easy washing
- **Ventilation:** Combination of ten(10) intake and exhaust vents located to enhance air movement
- **Fabric helmet bag included**



BLUE



GREEN



ORANGE



RED



PINK



YELLOW



## SYNCHRONY MX MX/OFFROAD HELMET

ALSO AVAILABLE:



YELLOW/RED



WHITE/BLUE



BLACK/YELLOW



**Need Replacement  
Cheek Pads, Breath  
Guards, Liners or Peak?**

**pages 56 & 57**



BACK

LARGE EYE PORT

COMBINATION  
OF 10 INTAKE &  
EXHAUST VENTS



FRONT

- helmets
- eyewear
- headgear
- jackets
- t-shirts & sweatshirts
- BL & F
- bibs & pants
- gloves
- boots
- protection

COLOR	XS	S	M	L	XL	2X	3X
<b>SYNCHRONY MX HELMET (OFFROAD)</b>							
<b>RACE EQUIPE GRAPHICS</b>							
MATTE SILVER	10901801	10901802	10901803	10901804	10901805	10901806	10901807
BLUE	10901701	10901702	10901703	10901704	10901705	10901706	10901707
GREEN	10901301	10901302	10901303	10901304	10901305	10901306	10901307
ORANGE	10901501	10901502	10901503	10901504	10901505	10901506	10901507
RED	10901601	10901602	10901603	10901604	10901605	10901606	10901607
PINK	10901901	10901902	10901903	10901904	10901905	10901906	10901907
YELLOW	10901401	10901402	10901403	10901404	10901405	10901406	10901407
YELLOW/RED	10902401	10902402	10902403	10902404	10902405	10902406	10902407
WHITE/BLUE	10902601	10902602	10902603	10902604	10902605	10902606	10902607
BLACK/YELLOW	10902201	10902202	10902203	10902204	10902205	10902206	10902207

SEE PAGES 2 & 3 FOR FITMENT INFORMATION

# HELMETS

helmets

eyewear

headgear

jackets

t-shirts & sweatshirts

bibs & pants

gloves

boots

protection

## SYNCHRONY MX MX/OFFROAD HELMET



### MONSTER GRAPHICS



RED

### FEATURES

- Lightweight thermoplastic composite construction shell for added strength
- Advanced EPS in head, cheeks, and frontal areas
- High quality textile material wicks away moisture and odors
- Modern design, large size eye port for maximum visibility- accommodates many styles of goggles
- Removable cheek pads and comfort liner for easy washing
- **Ventilation:** Combination of ten(10) intake and exhaust vents located to enhance air movement
- **Fabric helmet bag included**



GREEN

SILVER

YELLOW/BLUE

WHITE/RED



MATTE SILVER

BLUE

YELLOW

**SYNCHRONY MX  
MX/OFFROAD HELMET**



ALSO AVAILABLE:



MATTE BLACK

**Need Replacement  
Cheek Pads, Breath  
Guards, or Liners?  
pages 56 & 57**

COMBINATION  
OF 10 INTAKE &  
EXHAUST VENTS



BACK



TOP

- helmets
- eyewear
- headgear
- jackets
- t-shirts & sweatshirts
- bibs & pants
- gloves
- boots
- protection

COLOR	XS	S	M	L	XL	2X	3X
<b>SYNCHRONY MX MONSTER GRAPHICS</b>							
RED	9131601	9131602	9131603	9131604	9131605	9131606	9131607
GREEN	9131301	9131302	9131303	9131304	9131305	9131306	9131307
SILVER	9131801	9131802	9131803	9131804	9131805	9131806	9131807
YELLOW/BLUE	9132641	9132642	9132643	9132644	9132645	9132646	9132647
WHITE/RED	9132761	9132762	9132763	9132764	9132765	9132766	9132767
MATTE SILVER	9132811	9132812	9132813	9132814	9132815	9132816	9132817
BLUE	9131701	9131702	9131703	9131704	9131705	9131706	9131707
YELLOW	9131401	9131402	9131403	9131404	9131405	9131406	9131407
<b>SYNCHRONY MX SOLID COLOR</b>							
MATTE BLACK	9131201	9131202	9131203	9131204	9131205	9131206	9131207

SEE PAGES 2 & 3 FOR FITMENT INFORMATION

helmets
eyewear
headgear
jackets
t-shirts & sweatshirts
bibs & pants
gloves
boots
protection

## MX-1 (ADULT) MX/OFFROAD HELMET



### SNIPER GRAPHICS



MATTE SILVER

### FEATURES

- Lightweight thermoplastic composite construction shell for added strength
- Advanced EPS in head, cheeks, and frontal areas
- High quality textile materials to wick away moisture and reduce odors
- Modern design, large opening eye port for maximum visibility- accommodates many different styles of goggles
- Removable cheek pads and comfort liner for easy cleaning and washing
- **Ventilation:** Combination of fourteen(14) intake and exhaust vents located to enhance air movement
- **Fabric helmet bag included**



GREEN

YELLOW

ORANGE

RED



BLUE

SILVER

PINK



## MX-1 (ADULT) MX/OFFROAD HELMET



ALSO AVAILABLE:



MATTE BLACK

**Need Replacement  
Cheek Pads, Breath  
Guards, or Liners?  
pages 56 & 57**



BACK

COMBINATION  
OF 14 INTAKE &  
EXHAUST VENTS



TOP

- helmets
- eyewear
- headgear
- jackets
- t-shirts & sweatshirts
- bibs & pants
- gloves
- boots
- protection

COLOR	XS	S	M	L	XL	2X	3X
<b>MX-1 (ADULT) SNIPER GRAPHICS</b>							
MATTE SILVER	9129101	9129102	9129103	9129104	9129105	9129106	9129107
GREEN	9129301	9129302	9129303	9129304	9129305	9129306	9129307
YELLOW	9129401	9129402	9129403	9129404	9129405	9129406	9129407
ORANGE	9129501	9129502	9129503	9129504	9129505	9129506	9129507
RED	9129601	9129602	9129603	9129604	9129605	9129606	9129607
BLUE	9129701	9129702	9129703	9129704	9129705	9129706	9129707
SILVER	9129801	9129802	9129803	9129804	9129805	9129806	9129807
PINK	9129901	9129902	9129903	9129904	9129905	9129906	9129907
<b>MX-1 (ADULT) SOLID COLORS</b>							
MATTE BLACK	9129201	9129202	9129203	9129204	9129205	9129206	9129207

SEE PAGES 2 & 3 FOR FITMENT INFORMATION

# HELMETS

helmets
eyewear
headgear
jackets
t-shirts & sweatshirts
bibs & pants
gloves
boots
protection

## MX-2 (YOUTH) MX/OFFROAD HELMET



### SNIPER GRAPHICS (Youth Sizes)



MATTE SILVER

### FEATURES

- Lightweight thermoplastic composite construction shell for added strength
- Advanced EPS in head, cheeks, and frontal areas
- High quality textile materials to wick away moisture and reduce odors
- Modern design, large opening eye port for maximum visibility- accommodates many different styles of goggles
- Removable cheek pads and comfort liner for easy cleaning and washing
- **Ventilation:** Combination of fourteen(14) intake and exhaust vents located to enhance air movement
- **Fabric helmet bag included**



GREEN

YELLOW

ORANGE

RED



BLUE

SILVER

PINK

**MX-2 (YOUTH)**  
**MX/OFFROAD HELMET**



ALSO AVAILABLE:



MATTE BLACK

**Need Replacement  
Cheek Pads, Breath  
Guards, or Liners?**  
**pages 56 & 57**



BACK

COMBINATION  
OF 14 INTAKE &  
EXHAUST VENTS



TOP



**YOUTH SIZE CHART**

SIZE	CIRCUMFERENCE (CM)	CIRCUMFERENCE (IN)
S	49-50	19.15" - 19.50"
M	51-52	20.10" - 20.45"
L	53-54	20.87" - 21.26"

COLOR	S	M	L
<b>MX-2 (YOUTH) SNIPER GRAPHICS</b>			
MATTE SILVER	9130102	9130103	9130104
GREEN	9130302	9130303	9130304
YELLOW	9130402	9130403	9130404
ORANGE	9130502	9130503	9130504
RED	9130602	9130603	9130604
BLUE	9130702	9130703	9130704
SILVER	9130802	9130803	9130804
PINK	9130902	9130903	9130904
<b>MX-2 (YOUTH) SOLID COLORS</b>			
MATTE BLACK	9130202	9130203	9130204

- helmets
- eyewear
- headgear
- jackets
- t-shirts & sweatshirts
- bibs & pants
- gloves
- boots
- protection

helmets
eyewear
headgear
jackets
t-shirts & sweatshirts
bibs & pants
gloves
boots
protection

## ROUTE 66 POWERSPORT HELMET



### CARBON GRAPHICS



ORANGE

### FEATURES

- Two thermoplastic alloy shells: (XXS-S) & (M-XXL)
- Retro style bubble black visor fastened with three screws making it secure and noise free
- Zip-out rear curtain (neck roll) with facility to hold/hide audio system, covered in black leather and snaps
- Removable Thermo welded breathable interior padding for easy cleaning and washing
- **Ventilation:** Two hidden exhaust vents with channeled EPS for maximum air circulation and rider comfort
- **Quick-release inner sun shield, hard-coated clear and smoke tint shields included with each helmet**
- **Fabric helmet bag included**



SILVER



MATTE BLACK



PINK

**ROUTE 66  
POWERSPORT HELMET**



**SOLID COLORS**



BLACK



**Not sure  
about Sizing?**  
Check out page 3

**Need a Replacement  
Neck Curtain, Liner,  
or Sun Shield?**

page 56

MATTE BLACK

WHITE

MATTE WHITE



COLOR	XXS	XS	S	M	L	XL	2X
<b>ROUTE 66 CARBON GRAPHICS</b>							
ORANGE	9134500 79.95	9134501	9134502	9134503	9134504	9134505	9134506
SILVER	9134800 79.95	9134801	9134802	9134803	9134804	9134805	9134806
MATTE BLACK	9134810 79.95	9134811	9134812	9134813	9134814	9134815	9134816
PINK	9134900 79.95	9134901	9134902	9134903	9134904	9134905	9134906
<b>ROUTE 66 SOLID COLORS</b>							
BLACK	9134200	9134201	9134202	9134203	9134204	9134205	9134206
MATTE BLACK	9134210	9134211	9134212	9134213	9134214	9134215	9134216
WHITE	9134100	9134101	9134102	9134103	9134104	9134105	9134106
MATTE WHITE	9134110	9134111	9134112	9134113	9134114	9134115	9134116

SEE PAGES 2 & 3 FOR FITMENT INFORMATION

- helmets
- eyewear
- headgear
- jackets
- t-shirts & sweatshirts
- bibs & pants
- gloves
- boots
- protection

- helmets
- eyewear
- headgear
- jackets
- t-shirts & sweatshirts
- bibs & pants
- gloves
- boots
- protection

## ROUTE 66 POWERSPORT HELMET



### BUTTERFLY GRAPHICS



BLACK/PURPLE

### FEATURES

- Two thermoplastic alloy shells: (XXS-S) & (M-XXL)
- Retro style bubble black visor fastened with three screws making it secure and noise free
- Zip-out rear curtain (neck roll) with facility to hold/hide audio system, covered in black leather and snaps
- Removable Thermo welded breathable interior padding for easy cleaning and washing
- **Ventilation:** Two hidden exhaust vents with channeled EPS for maximum air circulation and rider comfort
- **Quick-release inner sun shield, hard-coated clear and smoke tint shields included with each helmet**
- **Fabric helmet bag included**



WHITE/PINK



QUICK-RELEASE  
SUN SHIELD

**ROUTE 66  
POWERSPORT HELMET**



- helmets
- eyewear
- headgear
- jackets
- t-shirts & sweatshirts
- bibs & pants
- gloves
- boots
- protection

**GHOST GRAPHICS**



BLACK/SILVER



QUICK-RELEASE  
SUN SHIELD

**SKULL GRAPHICS**



BLACK/SILVER

**Need a Replacement  
Neck Curtain, Liner,  
or Sun Shield?  
page 56**

COLOR	XXS	XS	S	M	L	XL	2X
<b>ROUTE 66 BUTTERFLY GRAPHICS</b>							
BLACK / PURPLE	9134000	9134001	9134002	9134003	9134004	9134005	9134006
WHITE / PINK	9134910	9134911	9134912	9134913	9134914	9134915	9134916
<b>ROUTE 66 GHOST GRAPHICS</b>							
BLACK / SILVER	9135100	9135101	9135102	9135103	9135104	9135105	9135106
<b>ROUTE 66 SKULL GRAPHICS</b>							
BLACK / SILVER	9135200	9135201	9135202	9135203	9135204	9135205	9135206

- helmets
- eyewear
- headgear
- jackets
- t-shirts & sweatshirts
- bibs & pants
- gloves
- boots
- protection

# ROUTE 1 BEANIE POWERSPORT HALF-HELMET



## SOLID COLORS

### ROUTE 1 BEANIE FEATURES

- Complex fiberglass composite shell construction
- Extremely light weight
- Non-removable interior
- Fabric helmet bag included



BLACK

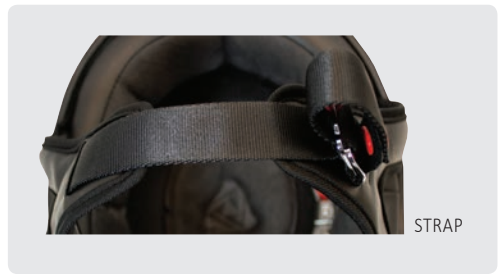


BOTTOM



MATTE BLACK

WHITE



STRAP



BACK

COLOR	XXS	XS	S	M	L	XL	2X
<b>ROUTE 1 BEANIE SOLID COLORS</b>							
BLACK	9133200	9133201	9133202	9133203	9133204	9133205	9133206
MATTE BLACK	9133210	9133211	9133212	9133213	9133214	9133215	9133216
WHITE	9133100	9133101	9133102	9133103	9133104	9133105	9133106

SEE PAGES 2 & 3 FOR FITMENT INFORMATION





**3/4 RETRO POWERSPORT HELMET**



**SOLID COLORS**



BLACK

**3/4 RETRO FEATURES**

- Thermoplastic alloy shell
- Includes quick release Tinted inner sun shield
- Double D-Ring Retention System
- Removable cheek pads
- Three snap Universal Bubble Peak
- Fabric helmet bag included



BUBBLE PEAK ATTACHED (INCLUDED)



**Need Replacement Cheek Pads? page 56**



MATTE BLACK

SILVER

WHITE

MATTE WHITE

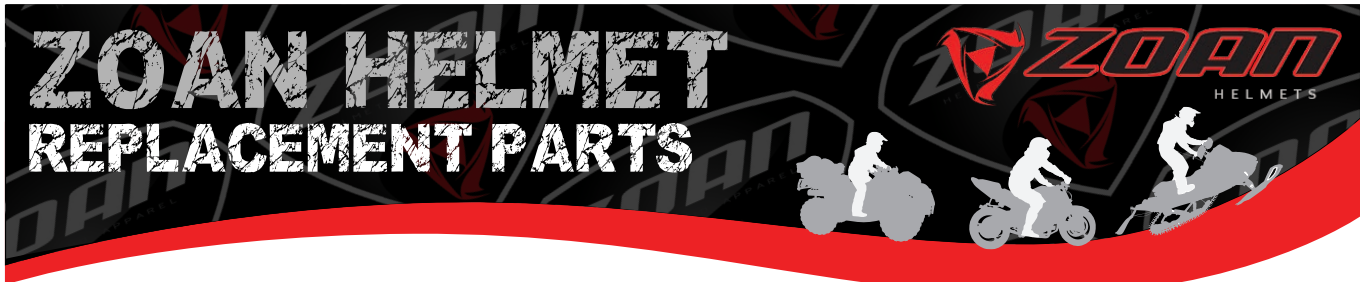
COLOR	XS	S	M	L	XL	2X
<b>3/4 RETRO SOLID COLORS</b>						
BLACK	9136201	9136202	9136203	9136204	9136205	9136206
MATTE BLACK	9136211	9136212	9136213	9136214	9136215	9136216
SILVER	9136801	9136802	9136803	9136804	9136805	9136806
WHITE	9136101	9136102	9136103	9136104	9136105	9136106
MATTE WHITE	9136111	9136112	9136113	9136114	9136115	9136116

**SEE PAGES 2 & 3 FOR FITMENT INFORMATION**

- helmets
- eyewear
- headgear
- jackets
- t-shirts & sweatshirts
- bibs & pants
- gloves
- boots
- protection

# HELMETS

- helmets
- eyewear
- headgear
- jackets
- t-shirts & sweatshirts
- bibs & pants
- gloves
- boots
- protection



## COMFORT LINERS

HELMET	XS	S	M	L	XL	2X	3X	4X
THUNDER	995162	995163	995164	995165	995166	995167	995168	----
BLADE	995169	995170	995171	995172	995173	995174	995175	----
GOLIATH	----	----	----	----	----	995176	995177	995178
OPTIMUS	995179	995180	995181	995182	995183	995184	995185	----
FLUX 4.1	995186	995187	995188	995189	995190	995191	----	----
ROUTE 66	995192	995193	995194	995195	995196	995197	----	----
MX -1 (Adult)	995198	995199	995200	995201	995202	995203	995204	----
MX -2 (Youth)	----	995276	995277	995278	----	----	----	----
SYNCHRONY MX	995205	995206	995207	995208	995209	995210	995211	----
SYNCHRONY DUO	995212	995213	995214	995215	995216	995217	----	----



## CHEEK PADS

HELMET	XS	S	M	L	XL	2X	3X	4X
THUNDER	995101	995102	995103	995104	995105	995106	995107	----
BLADE	995108	995109	995110	995111	995112	995113	995114	----
GOLIATH	----	----	----	----	----	995115	995116	995117
OPTIMUS	995118	995119	995120	995121	995122	995123	995124	----
FLUX 4.1	995125	995126	995127	995128	995129	995130	----	----
3/4 RETRO	995131	995132	995133	995134	995135	995136	----	----
MX -1 (Adult)	995137	995138	995139	995140	995141	995142	995143	----
MX -2 (Youth)	----	995144	995145	995146	----	----	----	----
SYNCHRONY MX	995147	995148	995149	995150	995151	995152	995153	----
SYNCHRONY DUO	995154	995155	995156	995157	995158	995159	----	----

## INNER SUN SHIELDS



## NECK CURTAINS



DESCRIPTION	PART #
ROUTE 66 NECK CURTAIN XXS-MED	995160
ROUTE 66 NECK CURTAIN LG-2X	995161

DESCRIPTION	PART #
Blade - Inner Sun Shield (Hard Coat, TINT)	995237
Blade - Inner Sun Shield (Anti-Fog, TINT)	995242
Flux 4.1 - Inner Sun Shield (Hard Coat, TINT)	995238
Flux 4.1 - Inner Sun Shield (Anti-Fog, TINT)	995243
Flux 4.1 - Inner Sun Shield (Anti-Fog, AMBER)	995245
Flux 4.1 - Inner Sun Shield (Anti-Fog, HI-DEF)	995246
Optimus - Inner Sun Shield (Anti-Fog, TINT)	995242
Route 66 - Inner Sun Shield (Hard Coat, CLEAR)	995240
Synchrony Duo - Inner Sun Shield (Hard Coat, TINT)	995241
Synchrony Duo - Inner Sun Shield (Anti-Fog, TINT)	995244
3/4 Retro - Inner Sun Shield (Hard Coat, CLEAR)	995239

## REPLACEMENT PEAK

DESCRIPTION	PART #
Synchrony MX - (Peak) "Race Equipe" Green	10901310
Synchrony MX - (Peak) "Race Equipe" Yellow	10901410
Synchrony MX - (Peak) "Race Equipe" Orange	10901510
Synchrony MX - (Peak) "Race Equipe" Red	10901610
Synchrony MX - (Peak) "Race Equipe" Blue	10901710
Synchrony MX - (Peak) "Race Equipe" Pink	10901910
Synchrony MX - (Peak) "Race Equipe" Matte Silver	10901810
Synchrony MX - (Peak) "Race Equipe" Yellow/Red	10902410
Synchrony MX - (Peak) "Race Equipe" Black/Yellow	10902210
Synchrony MX - (Peak) "Race Equipe" White/Blue	10902610

## ZOAN HELMET REPLACEMENT PARTS

### CHIN CURTAINS



995247

DESCRIPTION	PART #
Blade - Chin Curtain (SNOW)	995249
Flux 4.1 - Chin Curtain (SNOW/STREET)	995252
Goliath - Chin Curtain (SNOW)	995250
Optimus - Chin Curtain (SNOW/STREET)	995251
Synchrony MX - Chin Curtain (SNOW)	995253
Synchrony Duo - Chin Curtain (SNOW)	995253
Thunder (Youth) - Chin Curtain (SNOW)	995248
Thunder (Youth) - Chin Curtain (STREET)	995247
Thunder (Adult) - Chin Curtain (SNOW)	995249

### BREATH GUARDS



995261

995254

DESCRIPTION	PART #
Blade - Breath Guard (SNOW)	995270
Flux 4.1 (Pre 2016) - Breath Guard (SNOW)	995258
Flux 4.1 (2016) - Breath Guard (SNOW)	995290
Goliath - Breath Guard (SNOW)	995258
MX-1 (Adult) - Breath Guard (SNOW)	995259
MX-2 (Youth) - Breath Guard (SNOW)	995260
Optimus (Pre 2016) - Breath Guard (SNOW)	995258
Optimus - (2016) Breath Guard (SNOW)	995294
Synchrony MX - Breath Guard (SNOW)	995261
Synchrony Duo - Breath Guard (SNOW)	995261
Thunder - Breath Guard (STREET)	995254
Thunder (Adult) - Breath Guard (SNOW)	995256
Thunder (Youth) - Breath Guard (SNOW)	995255

### HELMET REPAIR KITS



995262 (3PCS)

995274 (2PCS)

DESCRIPTION	PART #
Blade - Repair Kit (Ratchet Plate Set) - SNOW/STREET	995274
Flux 4.1 - Repair Kit (Vents/Connectors)	995265
Flux 4.1 - Repair Kit (Ratchets/Screws)	995282
Goliath - Repair Kit (Vents/Connectors)	995263
MX-1 (Adult) - Repair Kit (Vents/Connectors)	995266
MX-2 (Youth) - Repair Kit (Vents Only)	995267
Optimus - Repair Kit (Vents/Ratchets/Screws)	995264
Optimus - Repair Kit (Ratchet Plate Set) - STREET	995273
Optimus - Repair Kit (Ratchet Plate Set) - SNOW	995274
Optimus - Repair Kit (Screws, NO RATCHET PLATES)	995280
Synchrony MX - Repair Kit (Vents Only)	995268
Synchrony Duo - Repair Kit (Vents/Connectors)	995269
Thunder - Repair Kit (Vents Only)	995262
Thunder - Repair Kit (Ratchet Plate Set) - SNOW/STREET	995274

### ELECTRIC LENS SNOW SHIELDS

(INCLUDED CORDS NOT PICTURED)



995232

DESCRIPTION	PART #
Blade - Outer Shield (Electric Lens)	995232
Flux 4.1 - Outer Shield (Electric Lens)	995235
Goliath - Outer Shield (Electric Lens)	995233
Optimus - Outer Shield (Electric Lens)	995234
Synchrony Duo - Outer Shield (Electric Lens)	995236
Thunder - Outer Shield (Electric Lens)	995232

### DOUBLE LENS SNOW SHIELDS



995228

DESCRIPTION	PART #
Blade - Outer Shield (Double Lens)	995227
Flux 4.1 - Outer Shield (Double Lens)	995230
Goliath - Outer Shield (Double Lens)	995228
Optimus - Outer Shield (Double Lens)	995229
Synchrony Duo - Outer Shield (Double Lens)	995231
Thunder - Outer Shield (Double Lens)	995227

### SINGLE LENS SHIELDS



995218

DESCRIPTION	PART #
Blade - Outer Shield (Hard Coat, CLEAR)	995218
Blade - Outer Shield (Hard Coat, TINT)	995222
Blade - Outer Shield (Iridium, RAINBOW)	995224
Blade - Outer Shield (Iridium, SILVER)	995225
Flux 4.1 - Outer Shield (Hard Coat, CLEAR)	995220
Flux 4.1 - Outer Shield (Anti-Fog, CLEAR)	995226
Goliath - Outer Shield (Hard Coat, CLEAR)	995219
Goliath - Outer Shield (Hard Coat, TINT)	995223
Optimus (Pre 2016) - Outer Shield (Hard Coat, CLEAR)	995284
Optimus (Pre 2016) - Outer Shield (Hard Coat, TINT)	995271
Optimus (Pre 2016) - Outer Shield (Iridium, SILVER)	995272
Optimus (2016) - Outer Shield (Hard Coat, CLEAR)	995291
Optimus (2016) - Outer Shield (Hard Coat, TINT)	995292
Optimus (2016) - Outer Shield (Iridium, SILVER)	995293
Synchrony Duo - Outer Shield (Hard Coat, CLEAR)	995221
Synchrony Duo - Outer Shield (Hard Coat, TINT)	995275
Thunder - Outer Shield (Hard Coat, CLEAR)	995218
Thunder - Outer Shield (Hard Coat, TINT)	995222
Thunder - Outer Shield (Iridium, RAINBOW)	995224
Thunder - Outer Shield (Iridium, SILVER)	995225

Find out more about helmets we have.

helmets

eyewear

headgear

jackets

t-shirts & sweatshirts

bibs & pants

gloves

boots

protection